



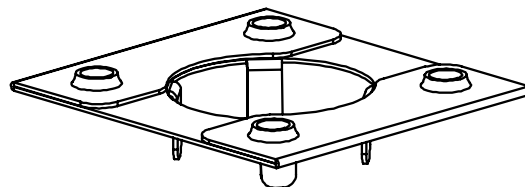
Washer, Electrical Equipment Bond

WEEB[®] WASHER

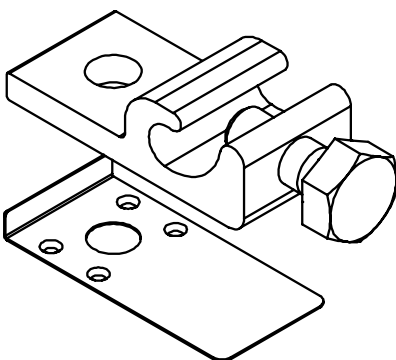
INSTALLATION INSTRUCTIONS

For PV Racking Roof Mount

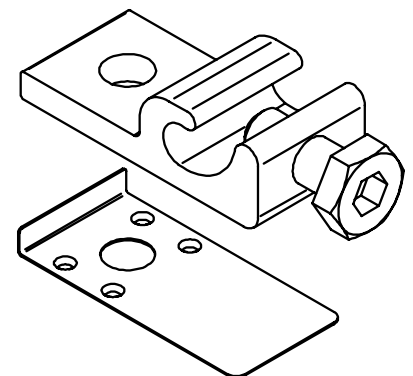
BURNDY recommends that the sufficient details of the installation be submitted to the AHJ for approval before any work is started.



WEEB-11.5



WEEB-LUG-6.7



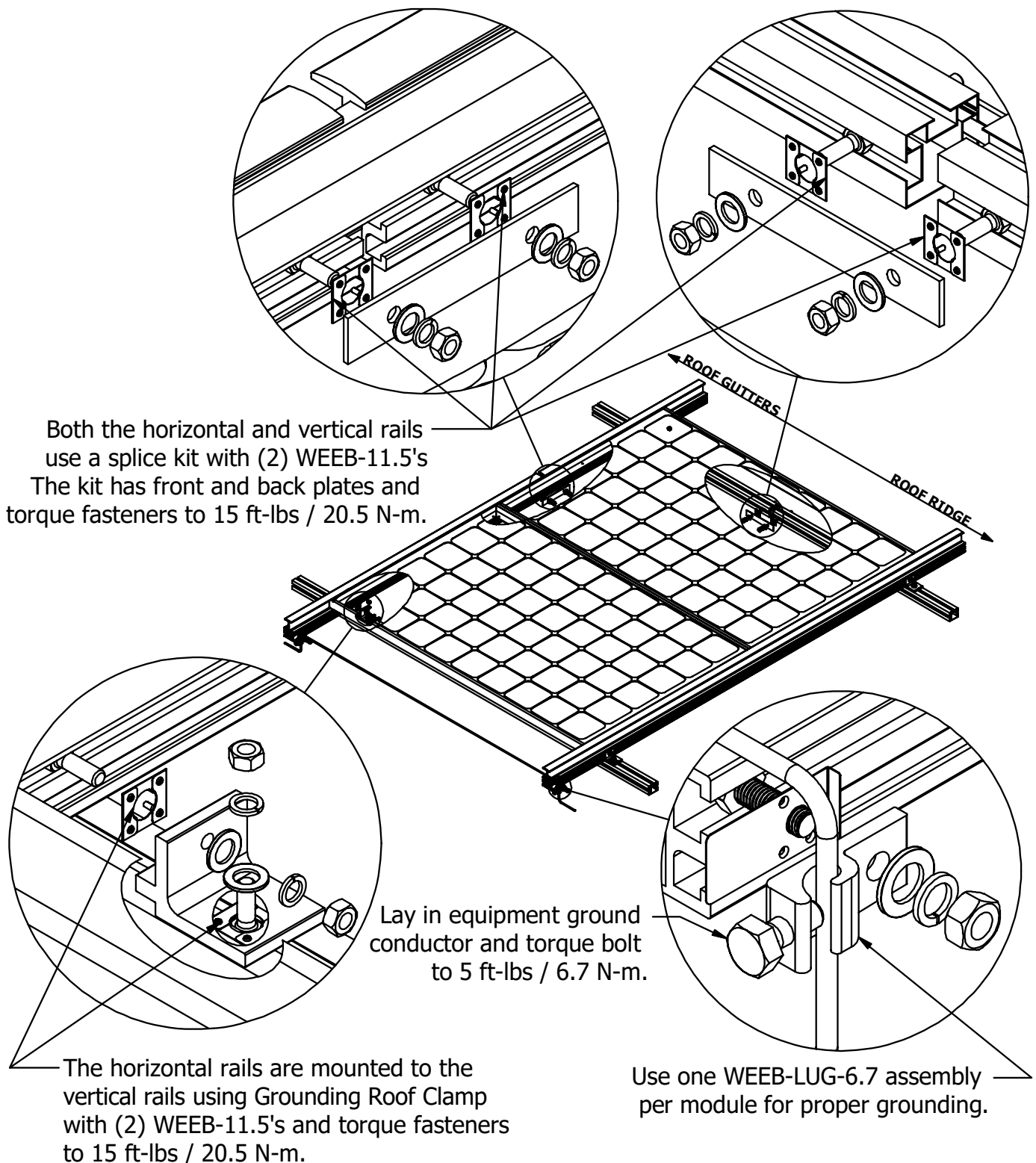
WEEB-LUG-6.7HS



Products are tested to UL 467, CAN/CSA-C22.2 No. 41
US/ Canadian standards for safety grounding and bonding equipment.



SYSTEM OVERVIEW



Both the horizontal and vertical rails use a splice kit with (2) WEEB-11.5's. The kit has front and back plates and torque fasteners to 15 ft-lbs / 20.5 N-m.

Lay in equipment ground conductor and torque bolt to 5 ft-lbs / 6.7 N-m.

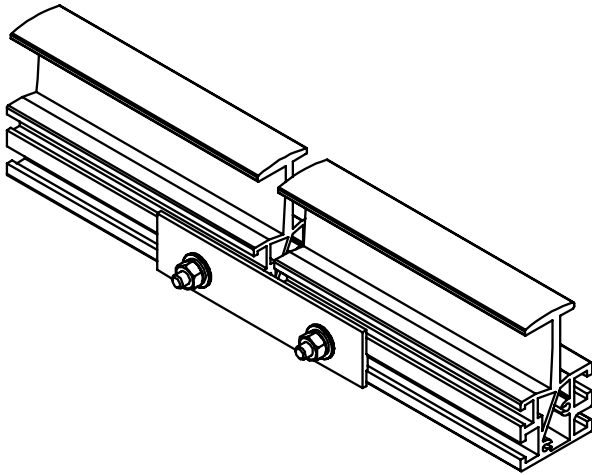
The horizontal rails are mounted to the vertical rails using Grounding Roof Clamp with (2) WEEB-11.5's and torque fasteners to 15 ft-lbs / 20.5 N-m.

Use one WEEB-LUG-6.7 assembly per module for proper grounding.

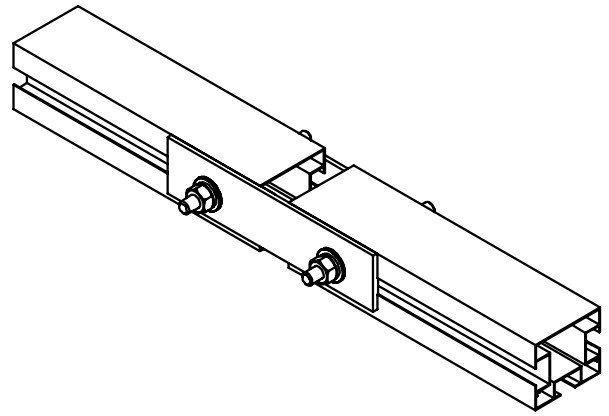
Important notes:

1. The WEEB-11.5 is only used in this application to provide a ground solution between the vertical and horizontal rails. It **DOES NOT** provide a ground solution for the individual modules. Wiley's recommendation for grounding module frames is using (1) WEEB-LUG-6.7 per module. The WEEB-LUGs used for grounding the PV modules are compatible with various cross-sections of module frames.
2. Anti-Seize or BURNDY PENETROX™ oxide inhibitor is not required on mounting hardware.
3. Secure PV cables and reliably route cables using Wiley ACC cable clips for proper wire management.
4. The NEC section 690.43 states "Exposed non-current carrying metal parts of module frames, equipment, and conductor enclosures shall be grounded in accordance with 250.134 or 250.136(A) regardless of voltage".

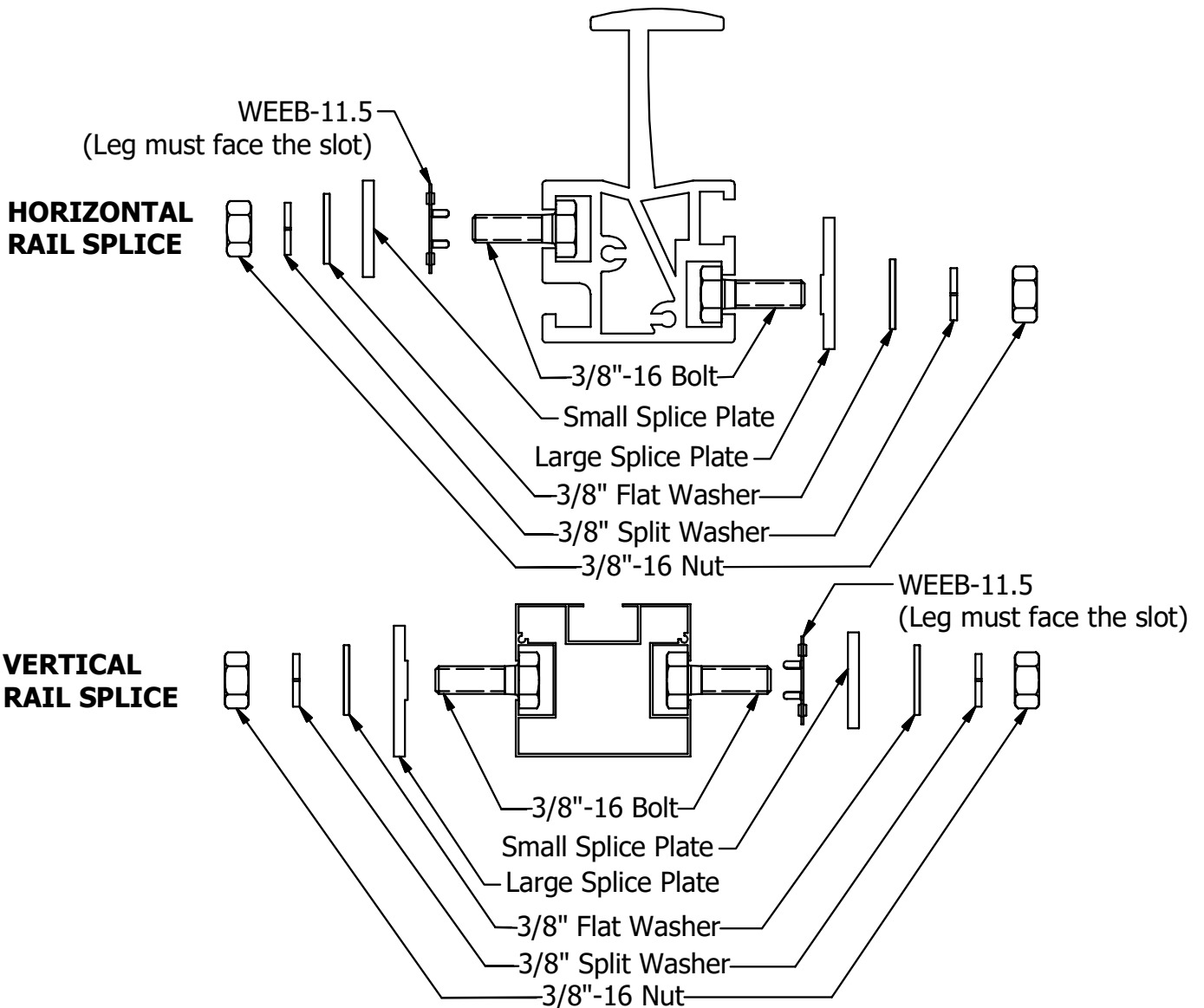
SPLICE KIT ASSEMBLY



HORIZONTAL RAIL SPLICE



VERTICAL RAIL SPLICE



Customer Service Department
 7 Aviation Park Drive
 Londonderry, NH 03053
 1-800-346-4175
 1-603-647-5299 (International)