



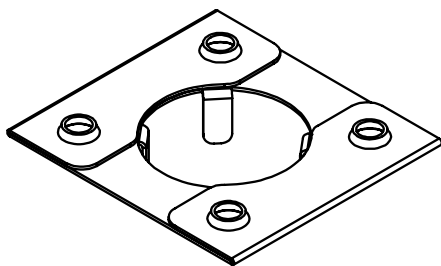
Washer, Electrical Equipment Bond

# WEEB® WASHER

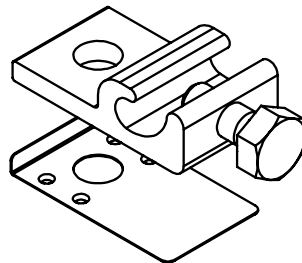
## INSTALLATION INSTRUCTIONS For RBI Solar Landfill PV Mounting System

Burndy LLC recommends that the sufficient details of the installation be submitted to the AHJ for approval before any work is started.

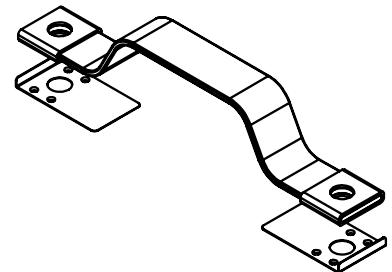
<b>NOTICE</b>	
	<p>PLEASE READ CAREFULLY BEFORE INSTALLING</p>



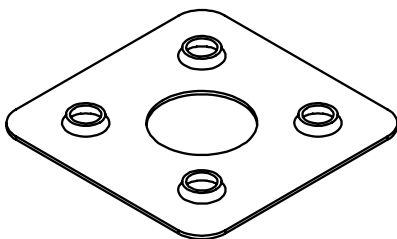
WEEB-11.5



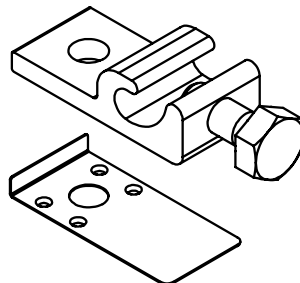
WEEB-LUG-8.0



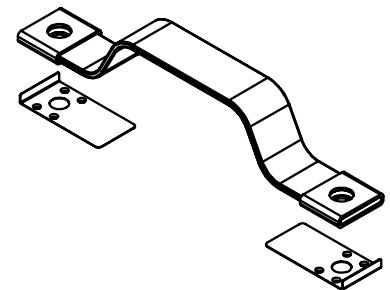
WEEB-BNDJMP8.0



WEEB-UIR



WEEB-LUG-6.7



WEEB-BNDJMP6.7



Products are tested to UL 467, CAN/CSA-C22.2 No. 41  
US/ Canadian standards for safety grounding and bonding equipment.



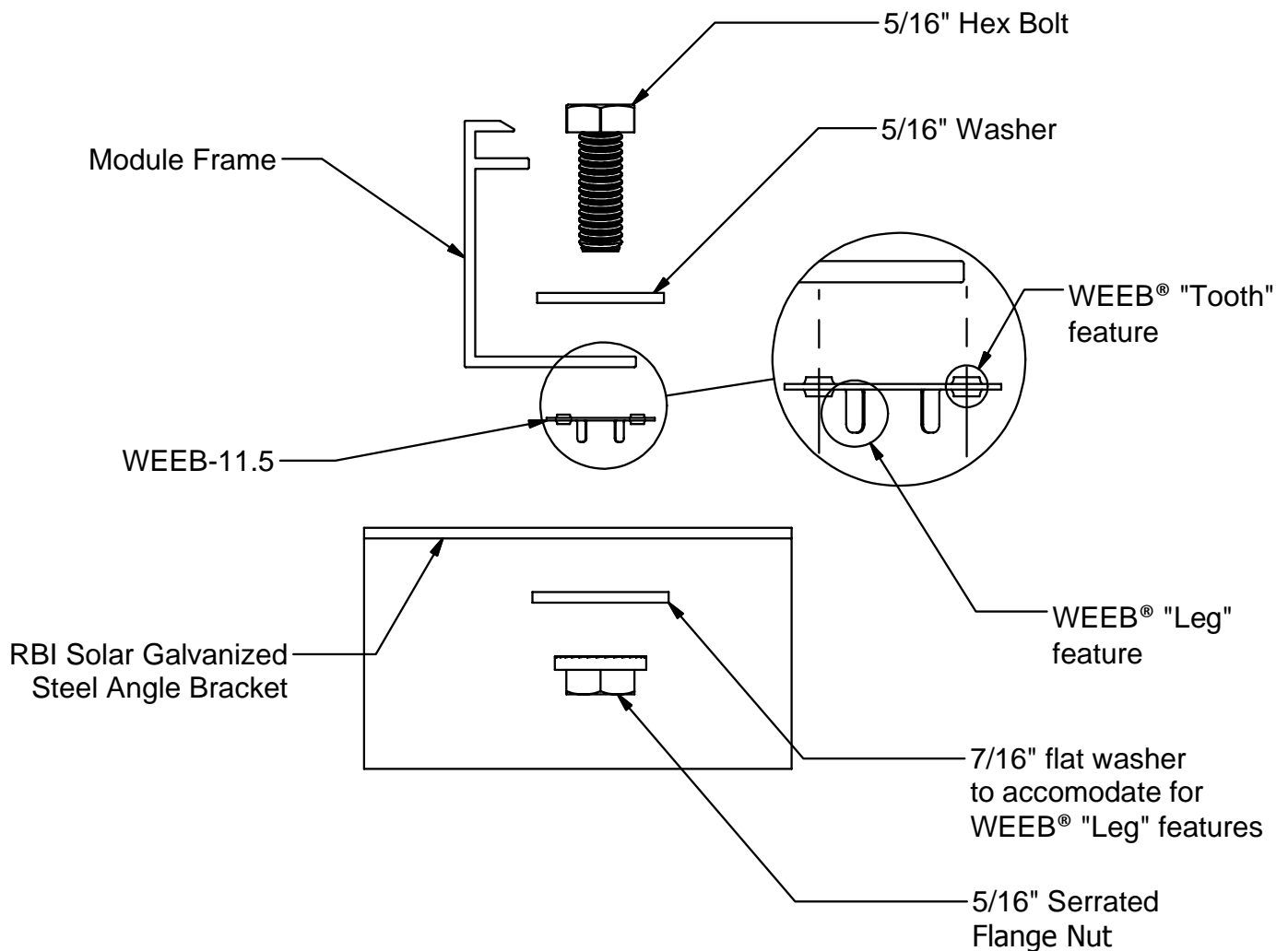
Intertek  
4004188

# WEEB-11.5 COMPATIBILITY

The WEEB® washer family of products can be used to bond anodized aluminum, galvanized steel, steel and other electrically conductive metal structures. All installations shall be in accordance with NEC requirements in the USA and with CSA C22.1 in Canada. The WEEB® washers are for use with modules that have a maximum fuse rating of less than 25A.

## Bottom Mounting Modules

The WEEB® washers used for bonding the PV modules to the mounting rails are compatible with various cross-sections of module frames. The following is an example of a module frame that is compatible. Notice that the WEEB® washer teeth are positioned completely under the edge of the module frame.



## Note:

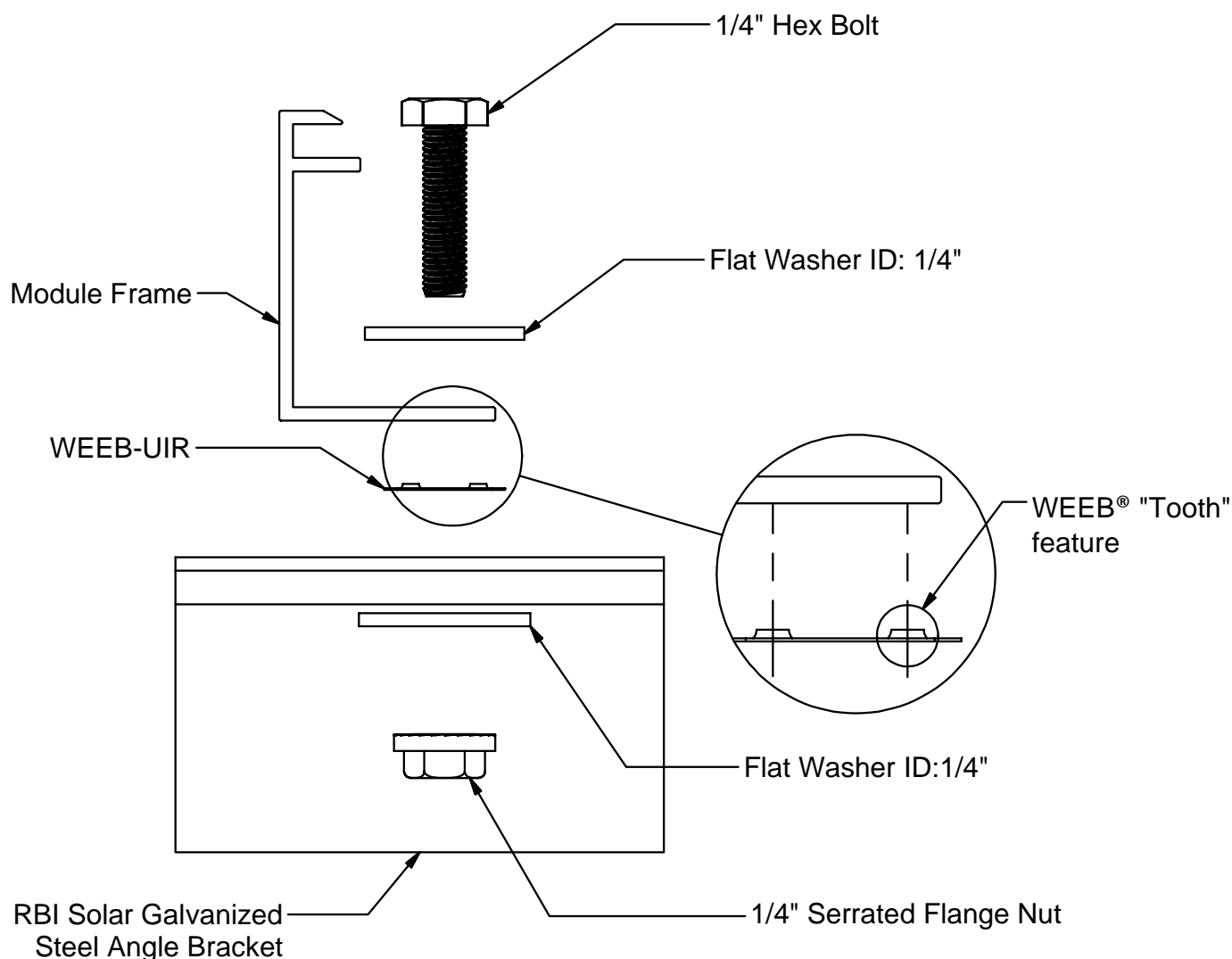
**Inspect each module frame used with a WEEB® device to ensure that the bottom mounting face of the frame is flat, and that there are no hindrances to embedding WEEB® washer teeth. Do not use a module with a frame that prevents the WEEB® washer teeth from embedding fully.**

# WEEB-UIR COMPATIBILITY

The WEEB® washer family of products can be used to bond anodized aluminum, galvanized steel, steel and other electrically conductive metal structures. All installations shall be in accordance with NEC requirements in the USA and with CSA C22.1 in Canada. The WEEB® washers are for use with modules that have a maximum fuse rating of less than 25A.

## Bottom Mounting Modules

The WEEB® washers used for bonding the PV modules to the mounting rails are compatible with various cross-sections of module frames. The following is an example of a module frame that is compatible. Notice that the WEEB® washer teeth are positioned completely under the edge of the module frame.

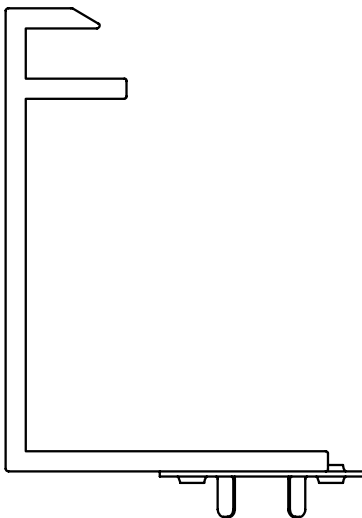
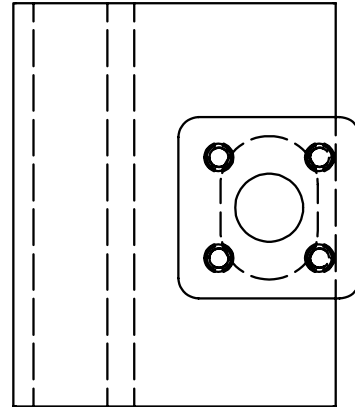
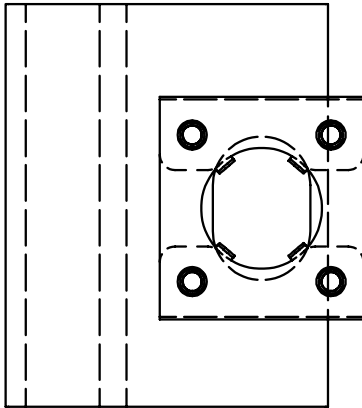


## Note:

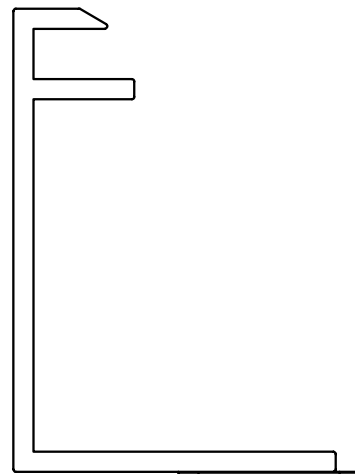
Inspect each module frame used with a WEEB® device to ensure that the bottom mounting face of the frame is flat, and that there are no hindrances to embedding WEEB® washer teeth. Do not use a module with a frame that prevents the WEEB® washer teeth from embedding fully.

# WEEB-UIR COMPATIBILITY

## WEEB-11.5 and WEEB-UIR BOTTOM MOUNT SCENARIO FOR SLOTTED MODULE MOUNTING HOLE



**ONLY (1) WEEB-11.5  
NEEDED PER MODULE**

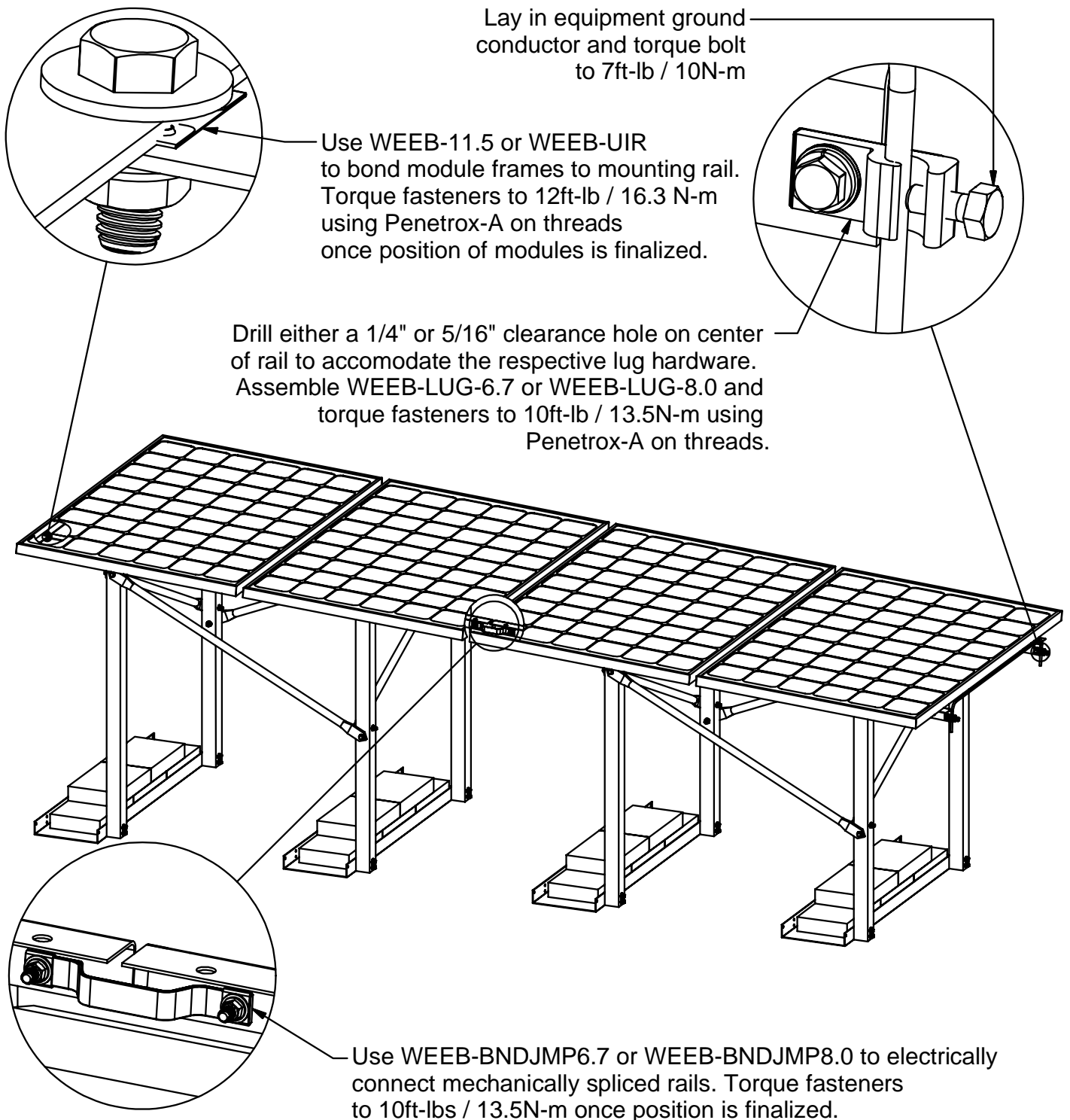


**ONLY (1) WEEB-UIR  
NEEDED PER MODULE**

### Note:

At least two teeth of WEEB-11.5 must embed to the module frame.

# SYSTEM OVERVIEW

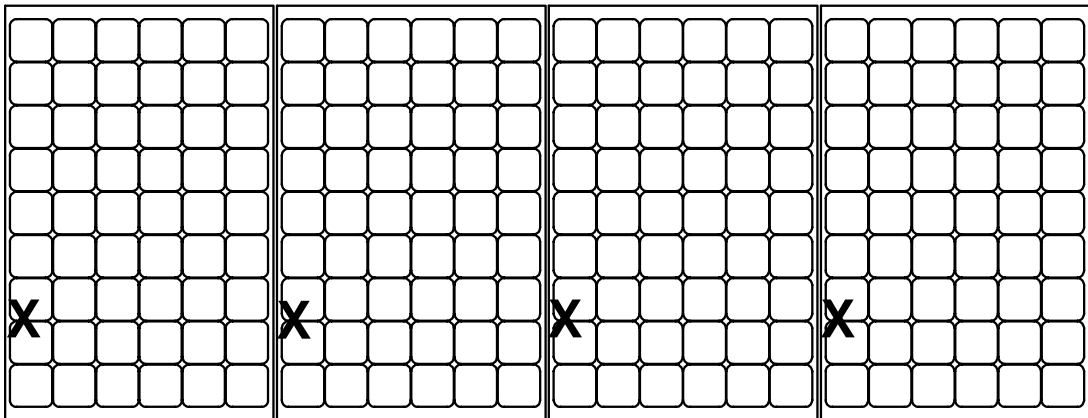


## Important notes:

1. Use general purpose anti-seize compound on fastener threads when installing WEEB® washers.
2. The NEC section 690.43 states "Exposed non-current carrying metal parts of module frames, equipment, and conductor enclosures shall be grounded in accordance with 250.134 or 250.136(A) regardless of voltage".

# WEEB-11.5 or WEEB-UIR LAYOUT

## EVEN NUMBER OF MODULES IN ROW

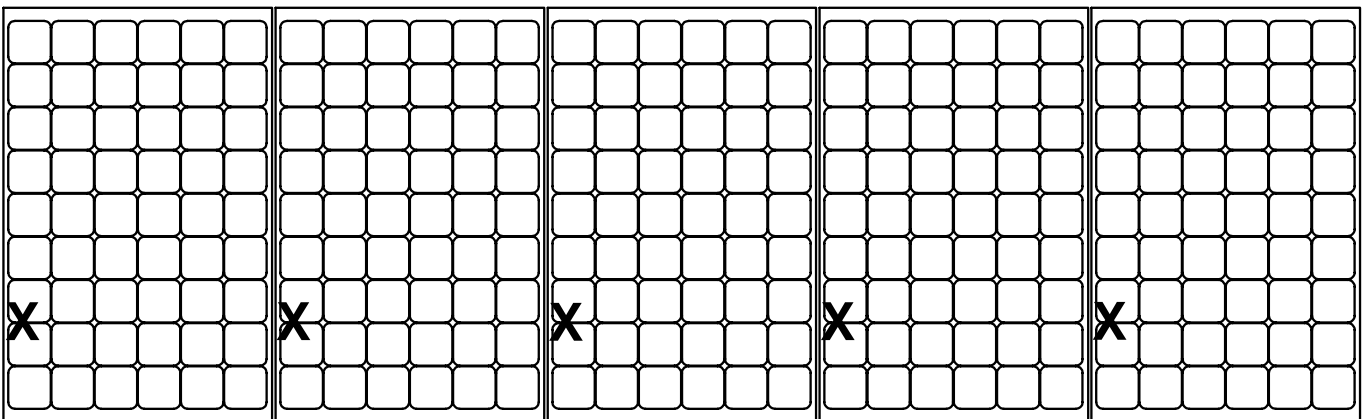


X DENOTES PLACES TO INSTALL WEEB-11.5 or WEEB-UIR

$$C \times R = 4 \times 1$$

$$\text{WEEB-11.5 or WEEB-UIR NEEDED} = C \times R = 4 \times 1 = 4$$

## ODD NUMBER OF MODULES IN ROW



X DENOTES PLACES TO INSTALL WEEB-11.5 or WEEB-UIR

$$C \times R = 5 \times 1$$

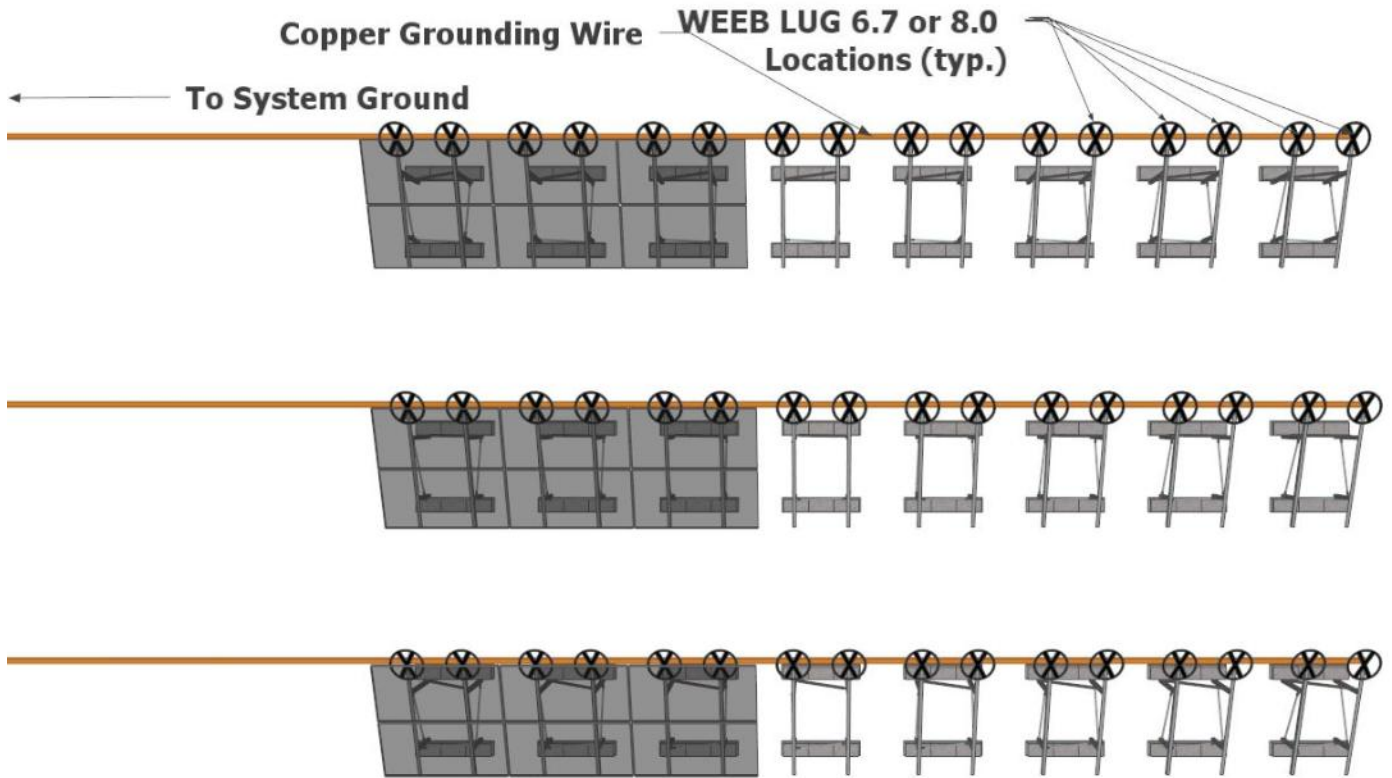
$$\text{WEEB-11.5 or WEEB-UIR NEEDED} = 5 \times 1 = 5$$

### Note:

When replacing a single faulty module, also remove the adjacent module which contacts the same WEEB® washers as the faulty module. This will ensure that there are never ungrounded modules in the array.

# WEEB-LUG-6.7 or WEEB-LUG-8.0 LOCATIONS

Install WEEB-LUG-6.7 or WEEB-LUG-8.0's at the following marked locations.



**Customer Service Department**  
7 Aviation Park Drive  
Londonderry, NH 03053  
1-800-346-4175  
1-603-647-5299 (International)