



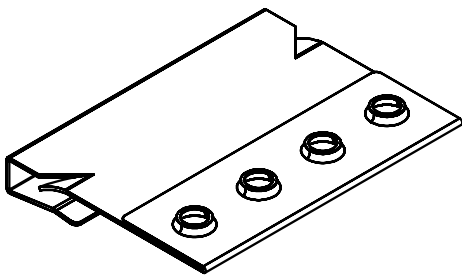
Washer, Electrical Equipment Bond

# WEEB® WASHER

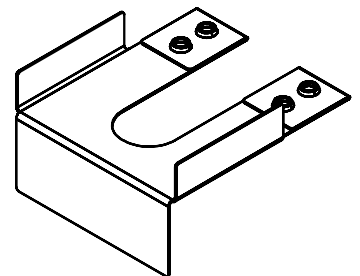
## INSTALLATION INSTRUCTIONS For ATI DURATRACK™ AND DURARACK™ MOUNTING SYSTEMS ONLY

Burndy LLC recommends that the sufficient details of the installation be submitted to the AHJ for approval before any work is started.

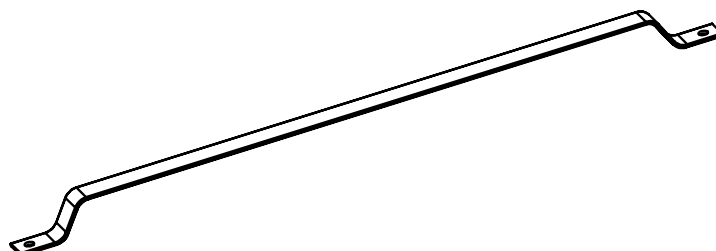
<b>NOTICE</b>	
	<p>PLEASE READ CAREFULLY BEFORE INSTALLING</p>



WEEB-ADC



WEEB-ADR



WILEYBRAID24



Products are tested to UL 467, CAN/CSA-C22.2 No. 41  
US/ Canadian standards for safety grounding and bonding equipment.



Intertek  
4004188

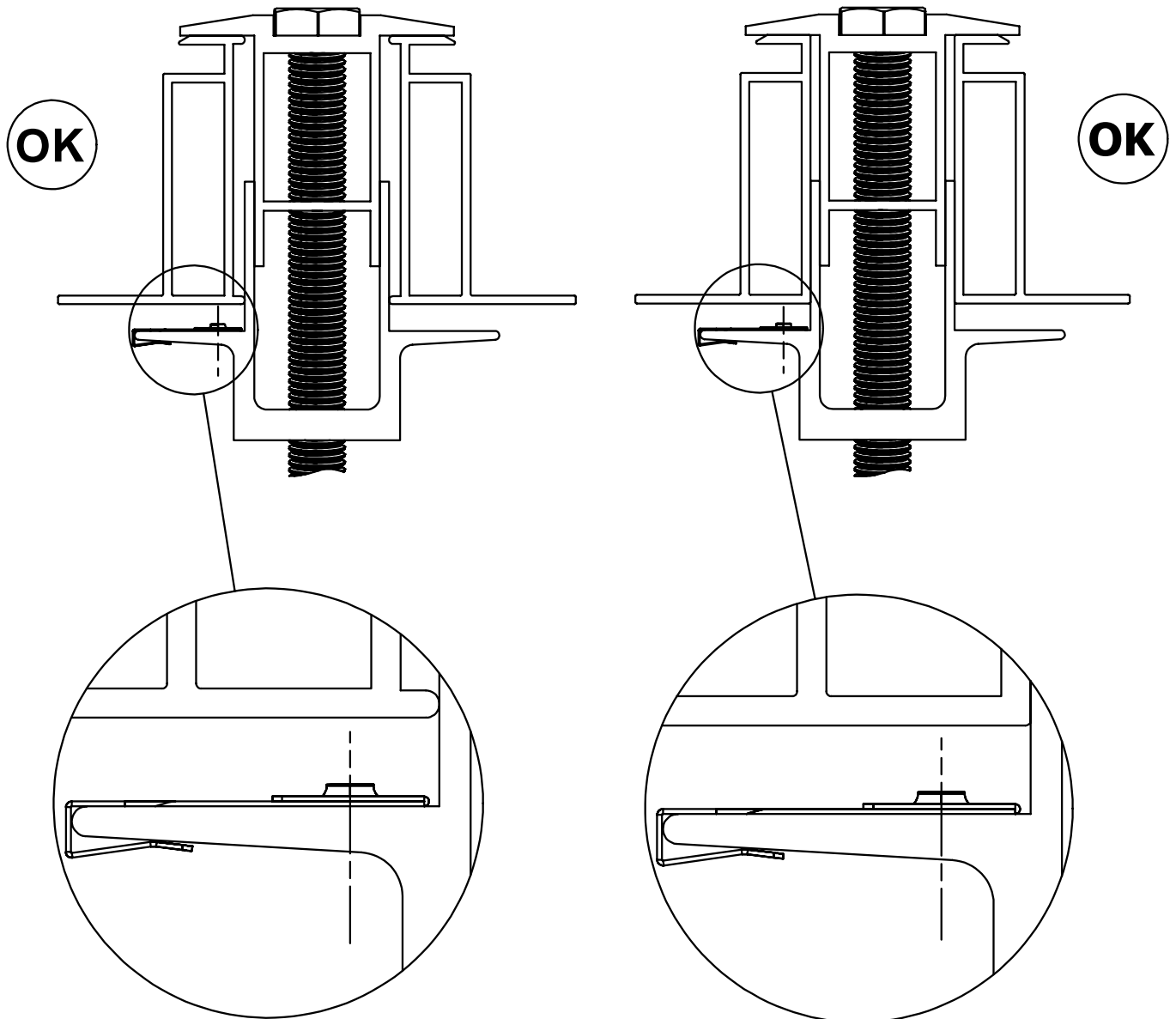


# WEEB® WASHER COMPATIBILITY

The WEEB® washer family of products can be used to bond anodized aluminum, galvanized steel, steel and other electrically conductive metal structures. All installations shall be in accordance with NEC requirements in the USA and with CSA C22.1 in Canada. The WEEB® washers are for use with modules that have a maximum fuse rating of less than 25A.

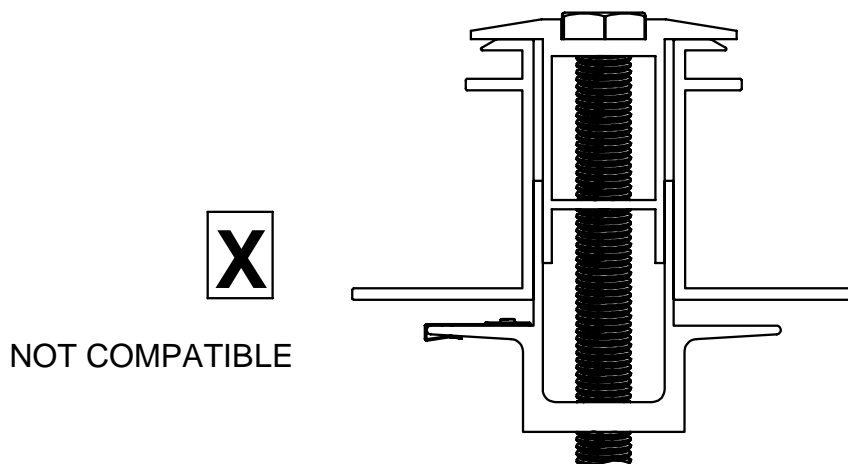
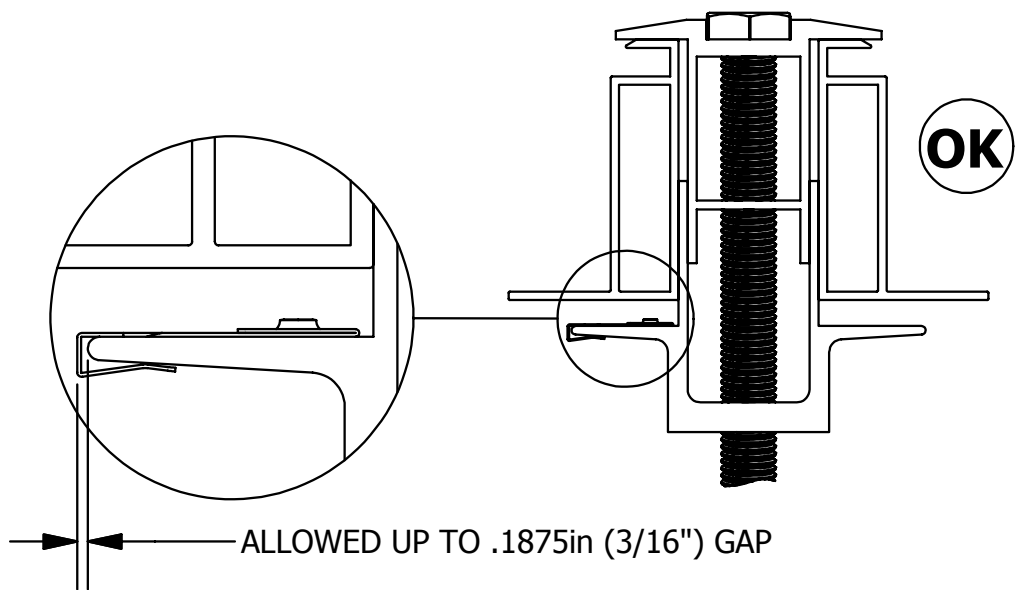
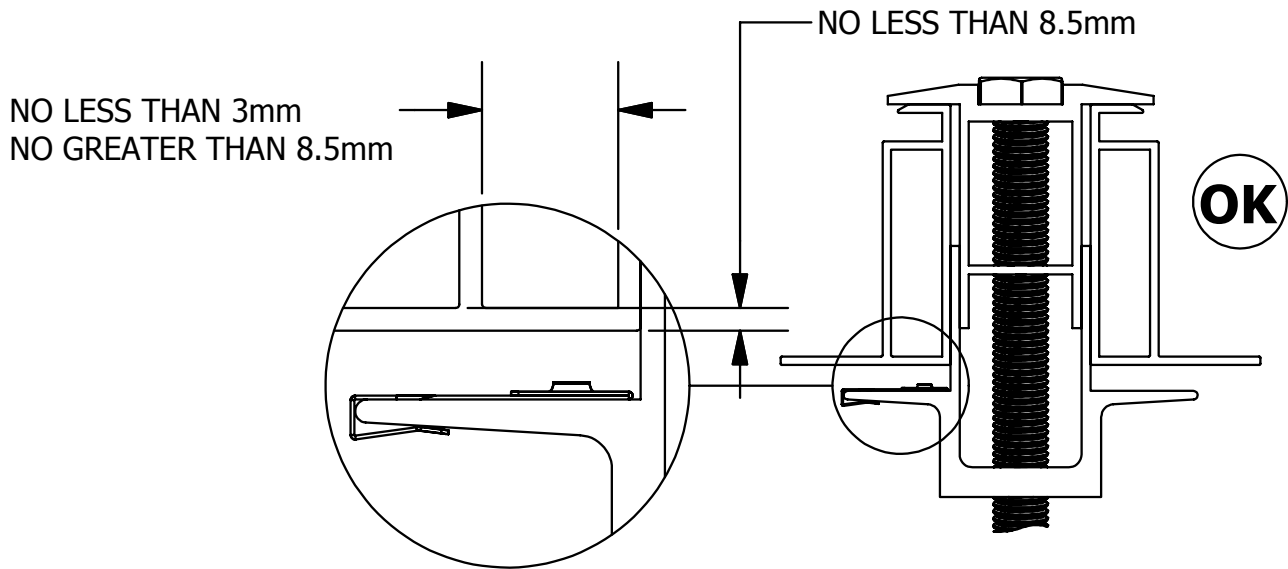
## Wattsun Module Clamps

The WEEB® washers used for bonding the PV modules to the mounting rails are compatible with various cross-sections of module frames. The following are examples of module frames that are compatible. Notice that the WEEB® washer teeth are positioned completely under the edge of the module frame.

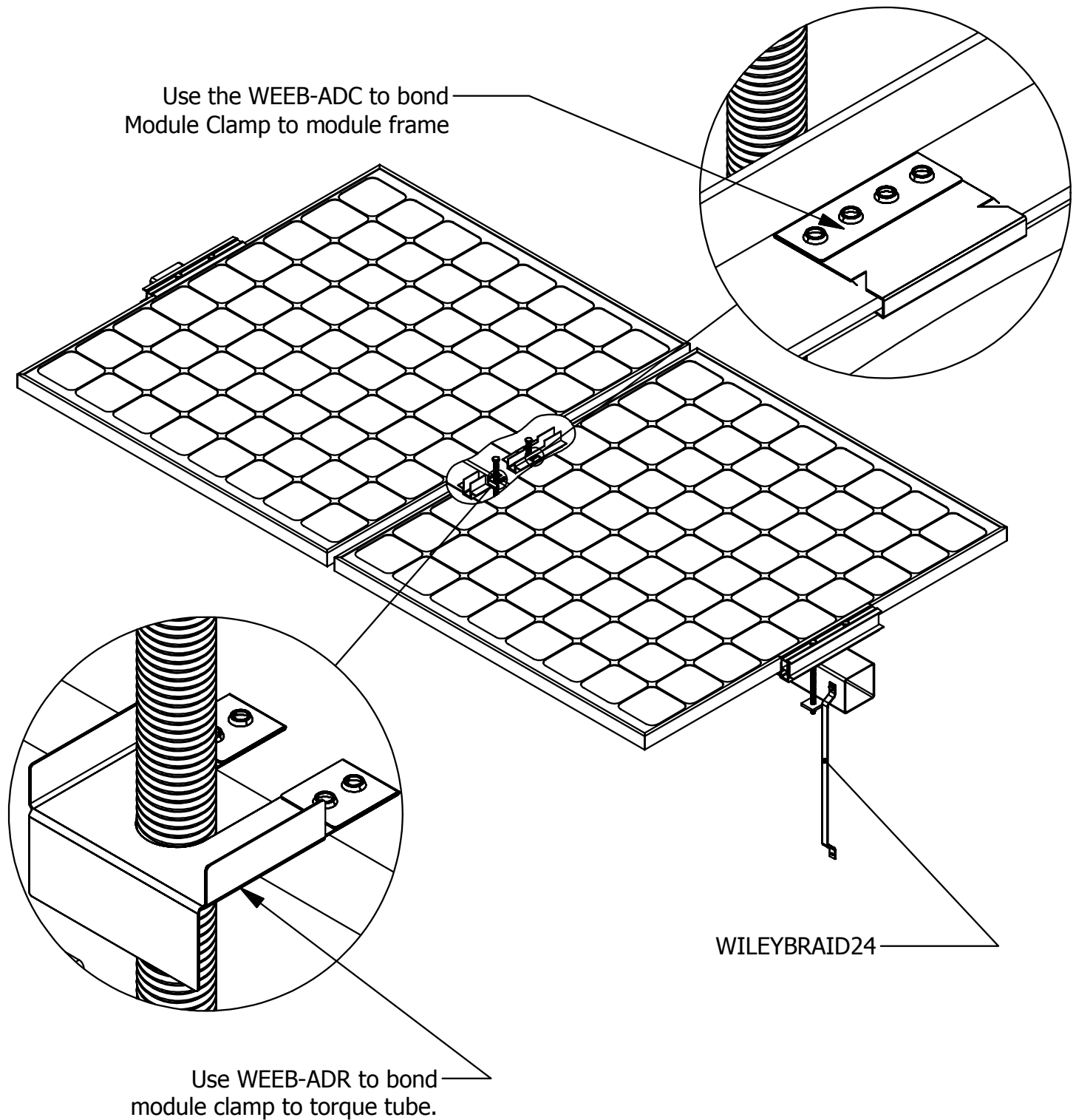


## WEEB-ADC and Boxed Module Frames

Due to the tooth spacing on the WEEB-ADC, only module frames with reinforcing box structures can be used for grounding with the WEEB® washer. Below are specifications for such module frames.



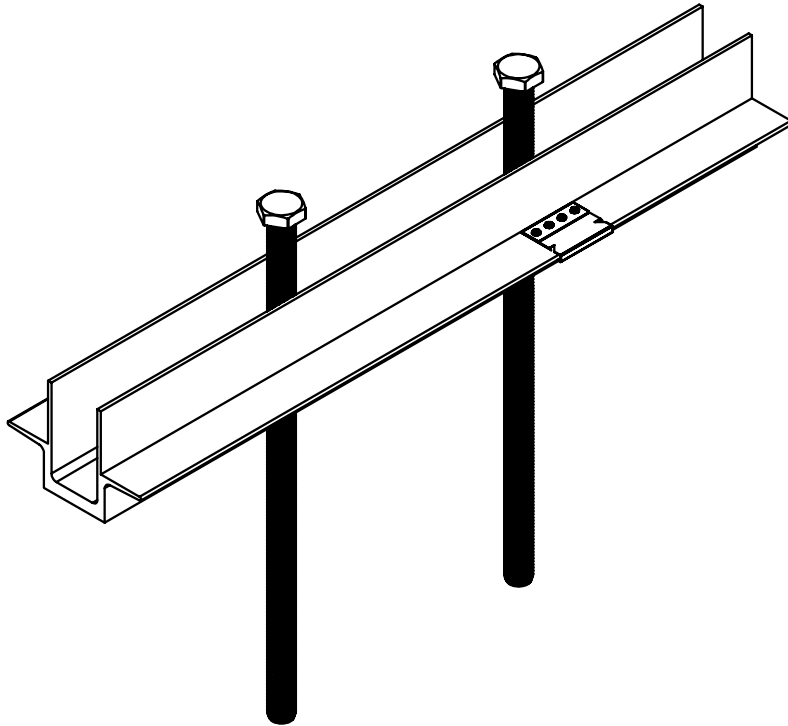
# SYSTEM OVERVIEW



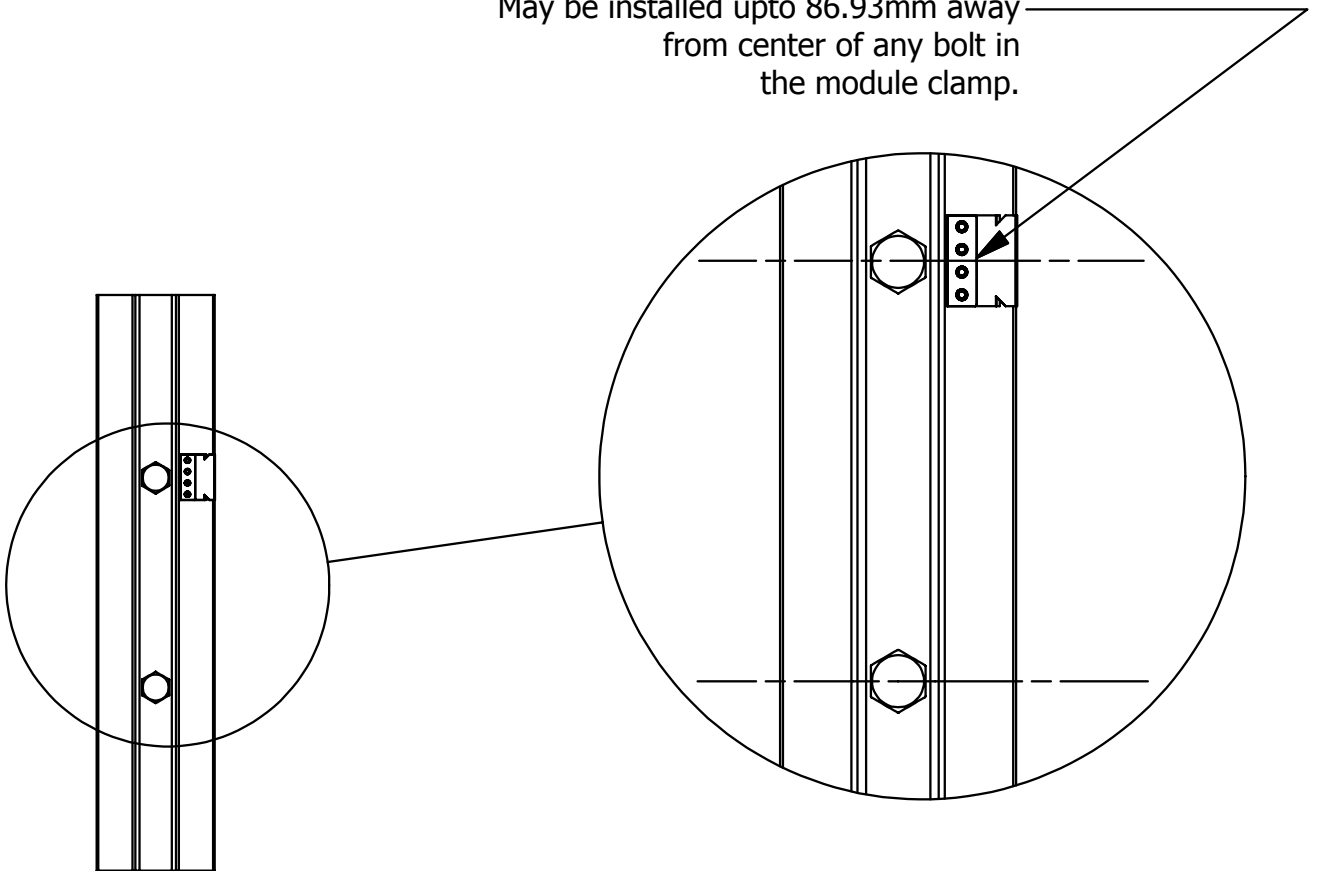
## Important notes:

1. The NEC section 690.43 states “Exposed non-current carrying metal parts of module frames, equipment, and conductor enclosures shall be grounded in accordance with 250.134 or 250.136(A) regardless of voltage”.

# PROPER USAGE OF WEEB-ADC

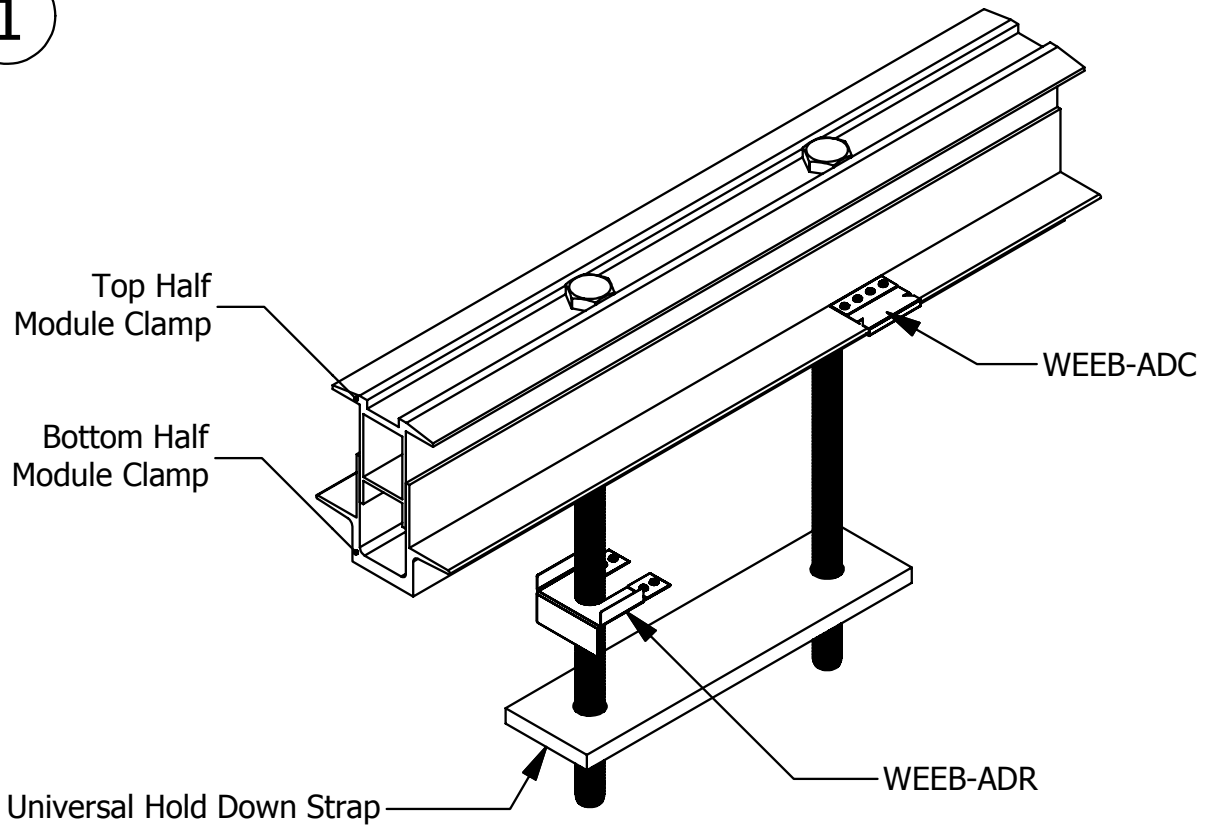


May be installed upto 86.93mm away  
from center of any bolt in  
the module clamp.

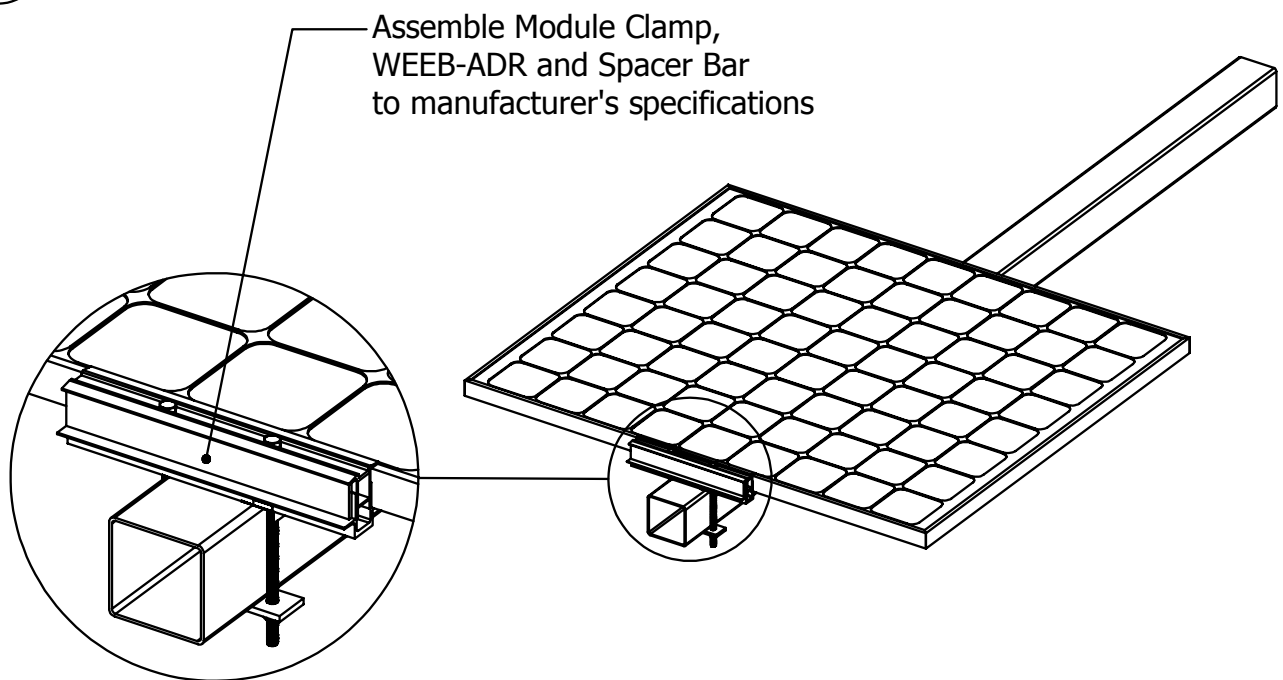


# WEEB-ADC & WEEB-ADR ASSEMBLY

1

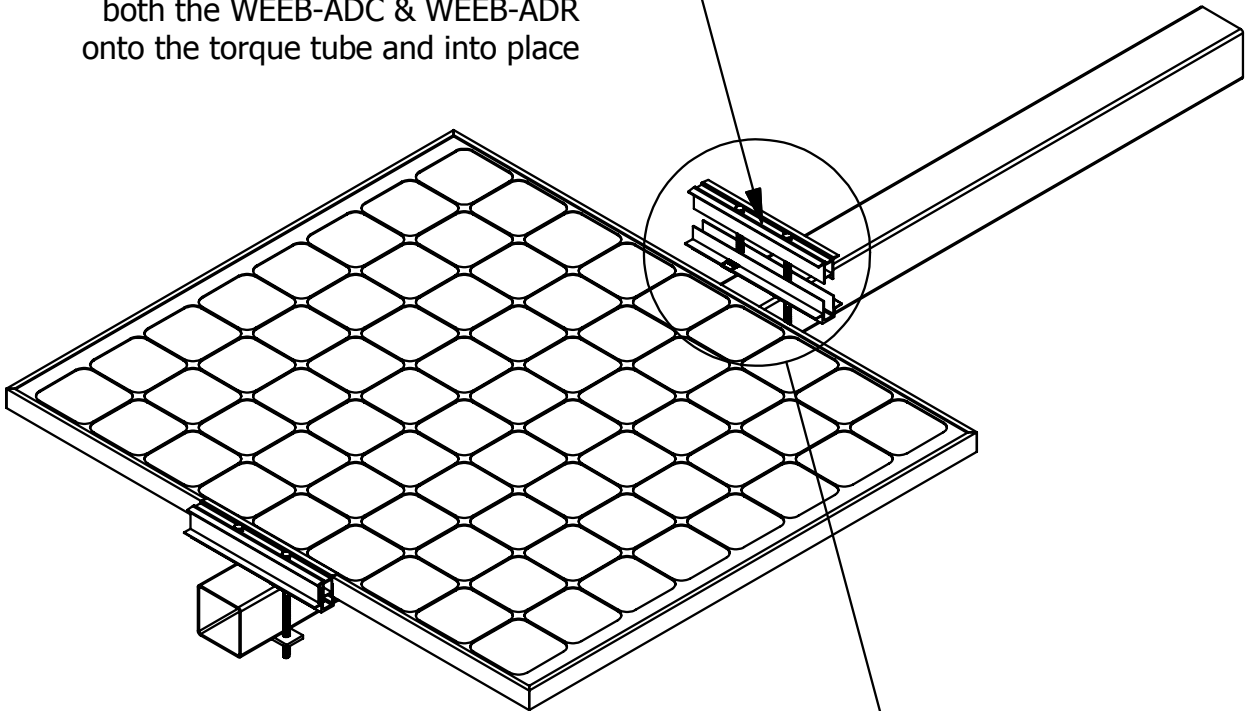


2

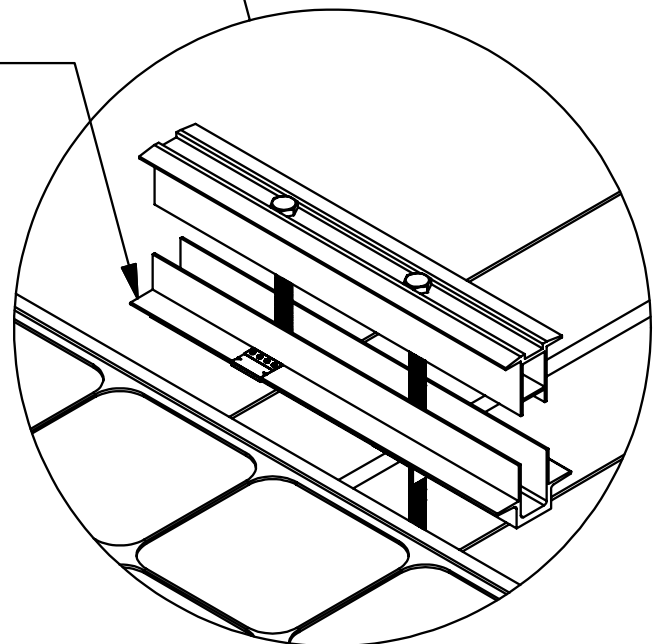


3

Slide the Module Clamp with both the WEEB-ADC & WEEB-ADR onto the torque tube and into place



Slightly lift module frame and move Module Clamp with WEEB-ADC & WEEB-ADR into position. WEEB® washer teeth will automatically be aligned under the edge of the module when the clamp assembly is installed correctly.

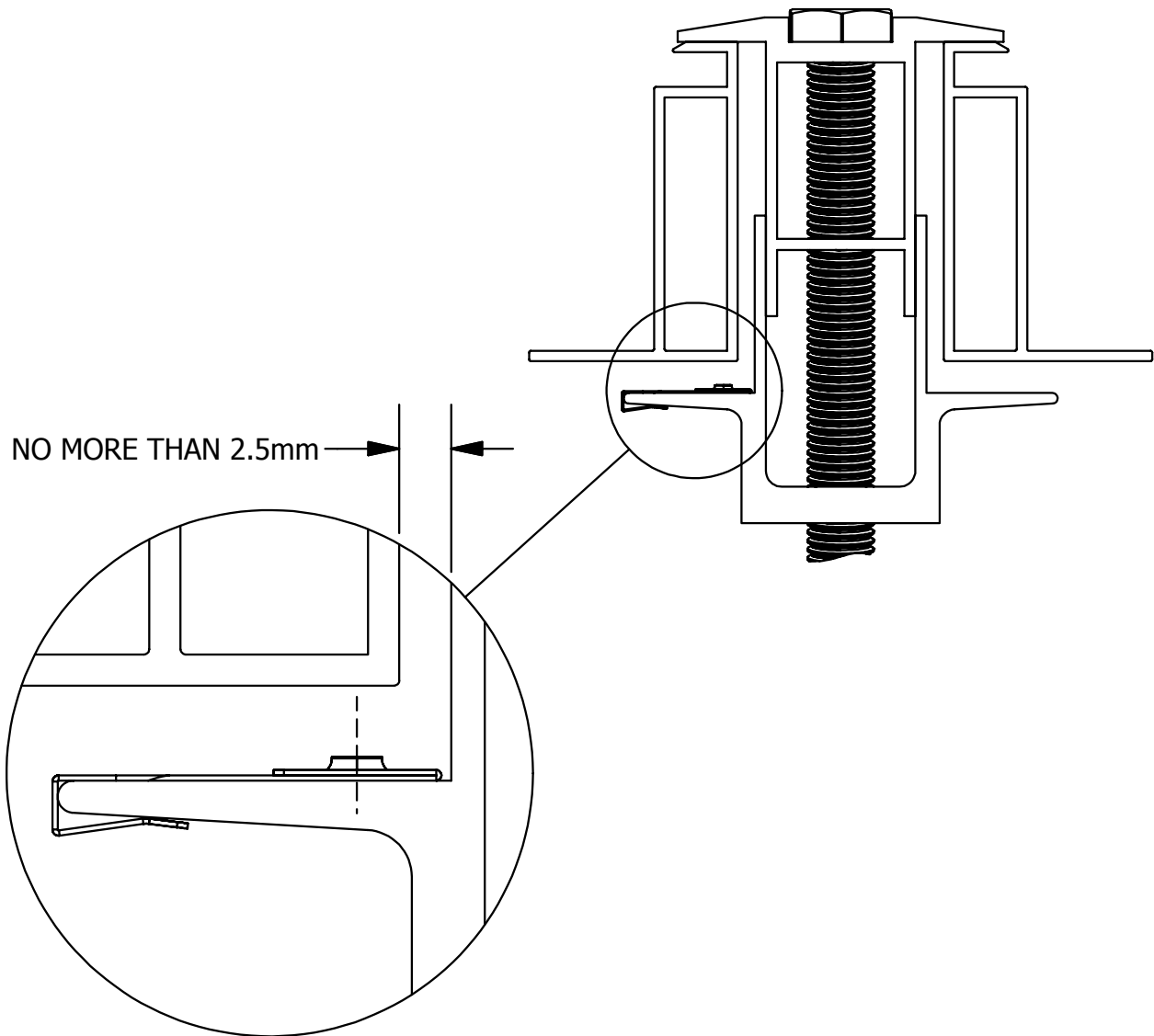


### Important notes:

To correctly install WEEB-ADC please follow the specifications for module spacing indicated on the next page.

## Important notes:

To ensure appropriate clamping area, there must be no more than 2.5mm of space between the module clamp and the module frame.

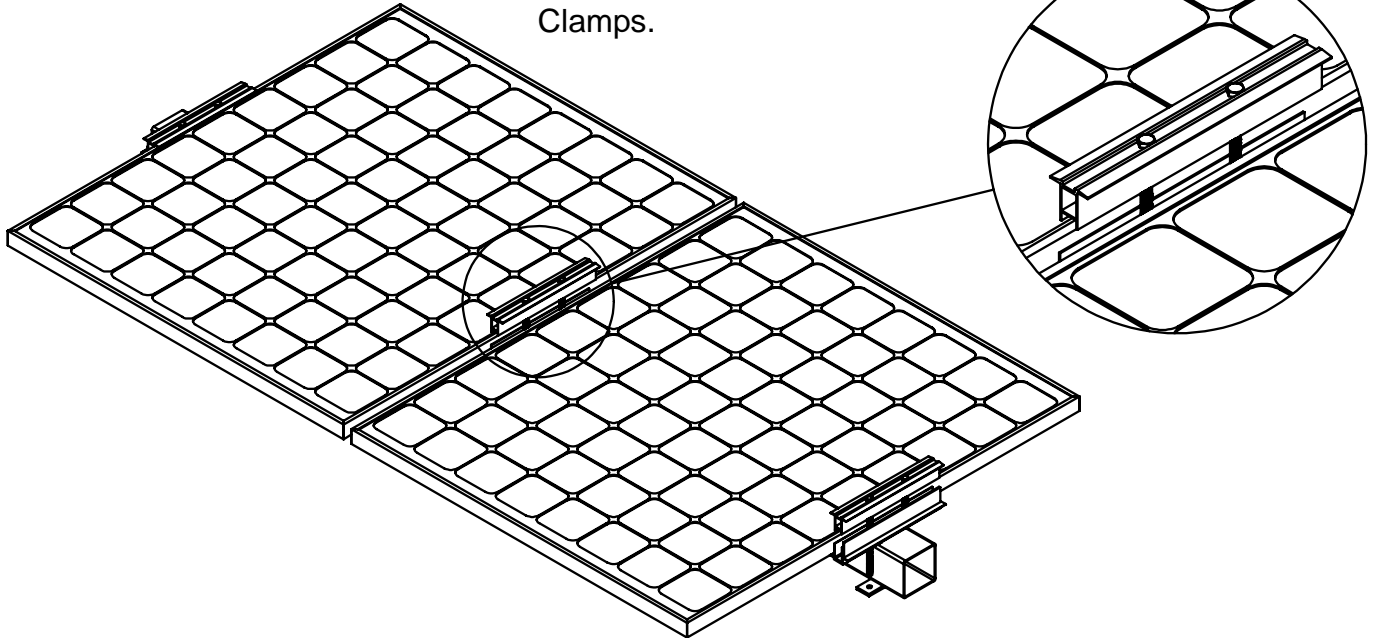




## Finalizing Module Position

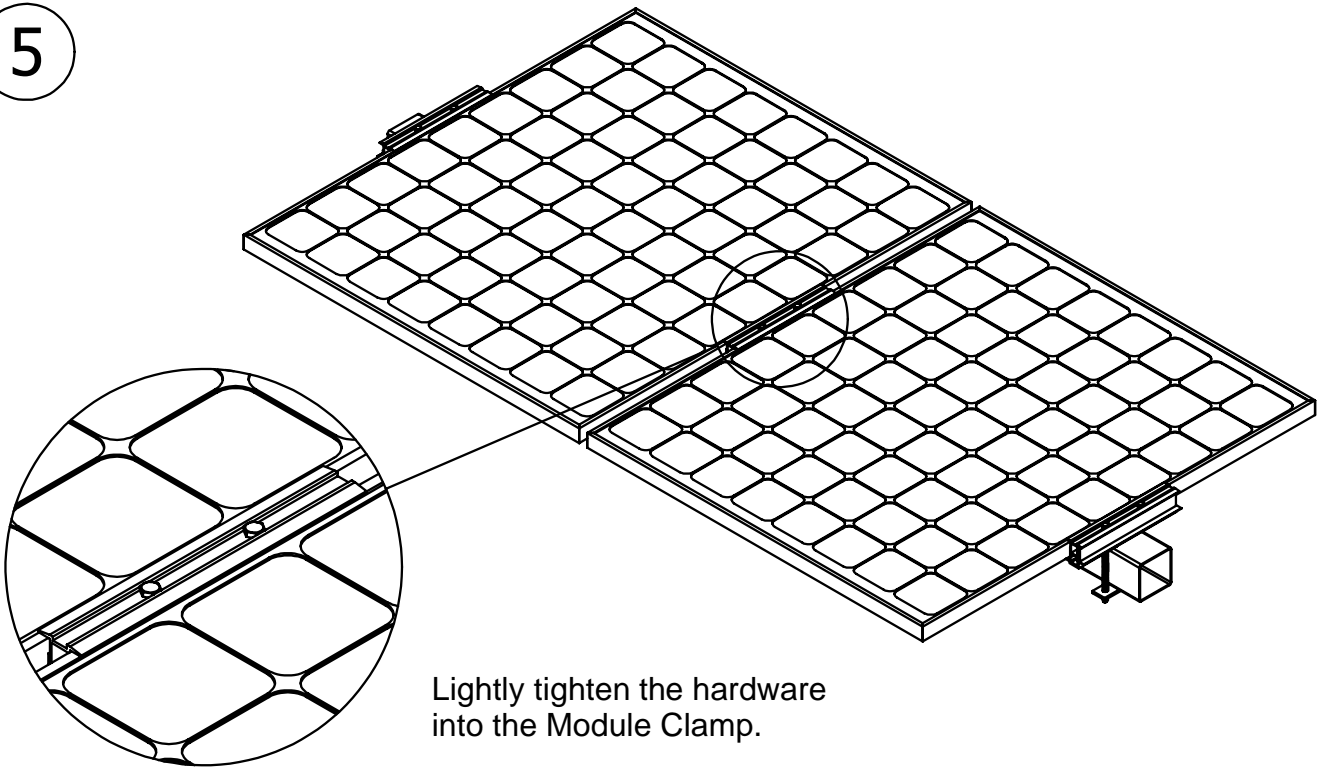
4

When both Module Clamps in position, place module on the bottom half of the Module Clamps.

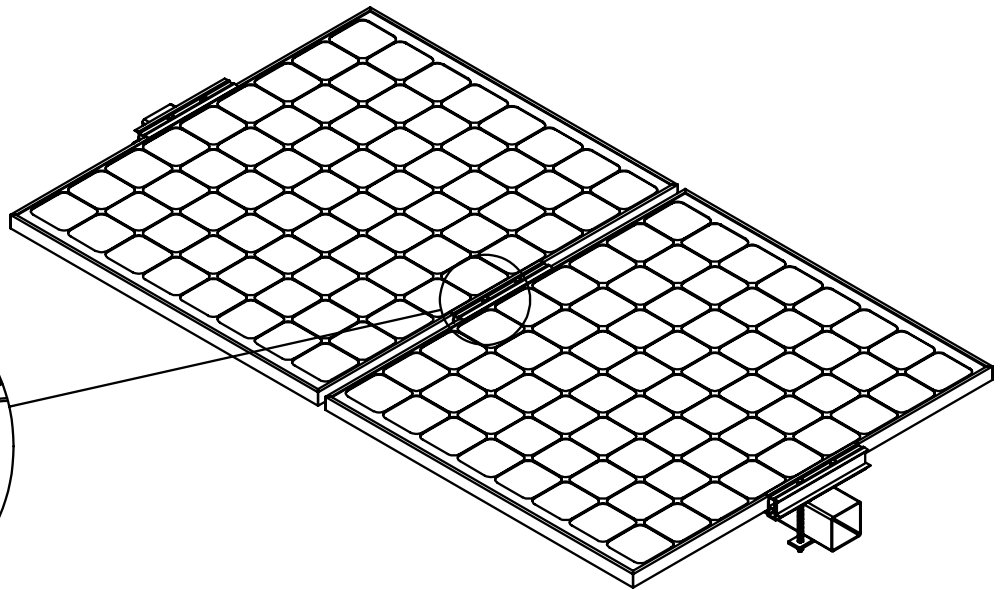
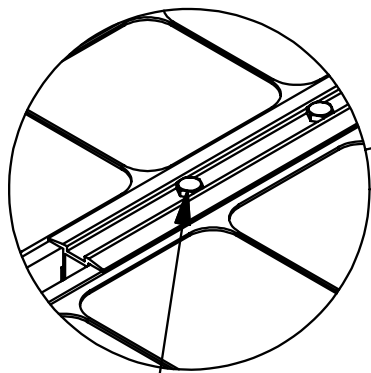


5

Lightly tighten the hardware into the Module Clamp.

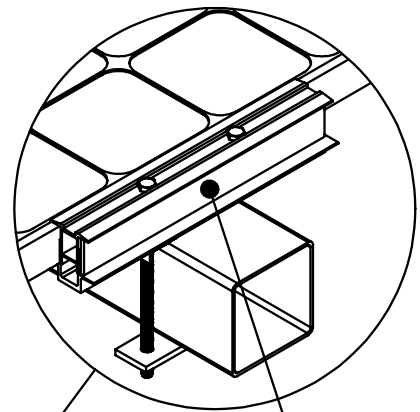
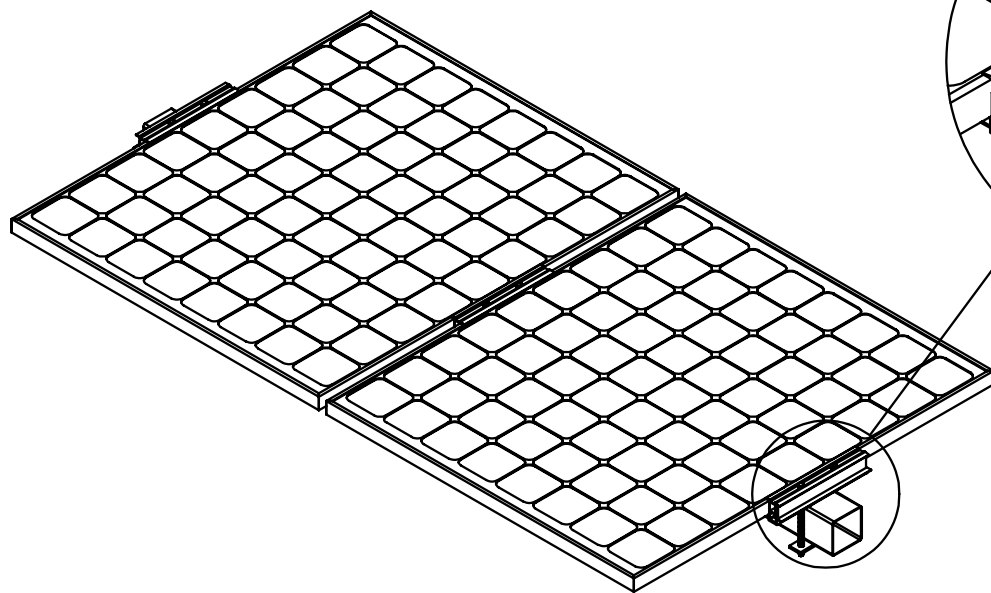


6



When position of solar modules is finalized,  
torque fasteners to minimum of 11 ft-lbs (14.9 N-m).

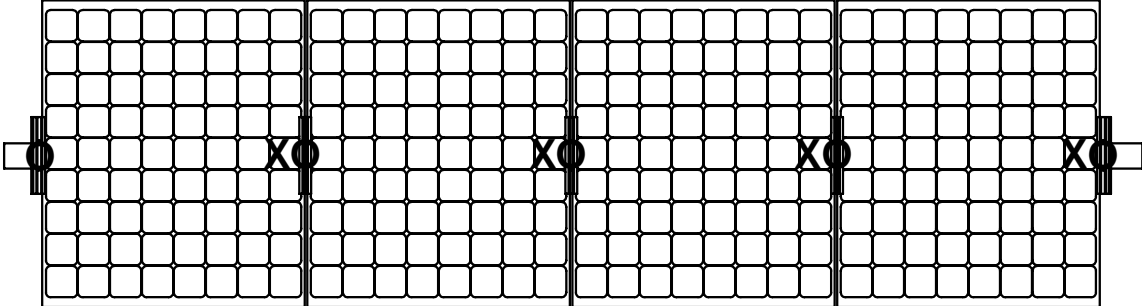
7



Assemble Module Clamp,  
WEEB-ADR and Spacer Bar  
to manufacturer's specifications

# WEEB-ADC & WEEB-ADR LAYOUT

## EVEN NUMBER OF MODULES IN ROW



X DENOTES PLACES TO INSTALL WEEB-ADC

COLUMN X ROW = C X R = 4 X 1 = 4

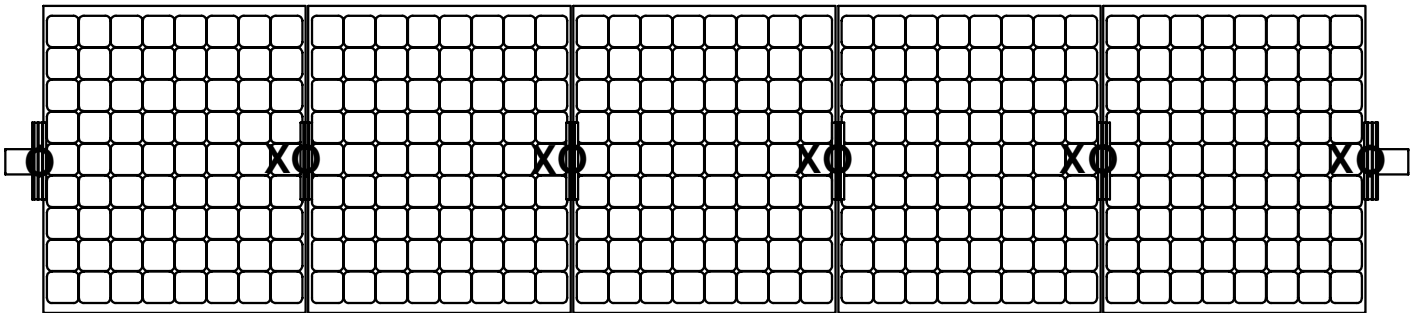
WEEB-ADC NEEDED = 4

O DENOTES PLACES TO INSTALL WEEB-ADR

[COLUMN + 1] X ROW = [C + 1] X R = [4 + 1] X 1 = 5

WEEB-ADR NEEDED = 5

## ODD NUMBER OF MODULES IN ROW



X DENOTES PLACES TO INSTALL WEEB-ADC

COLUMN X ROW = C X R = 5 X 1 = 5

WEEB-ADC NEEDED = 5

O DENOTES PLACES TO INSTALL WEEB-ADR

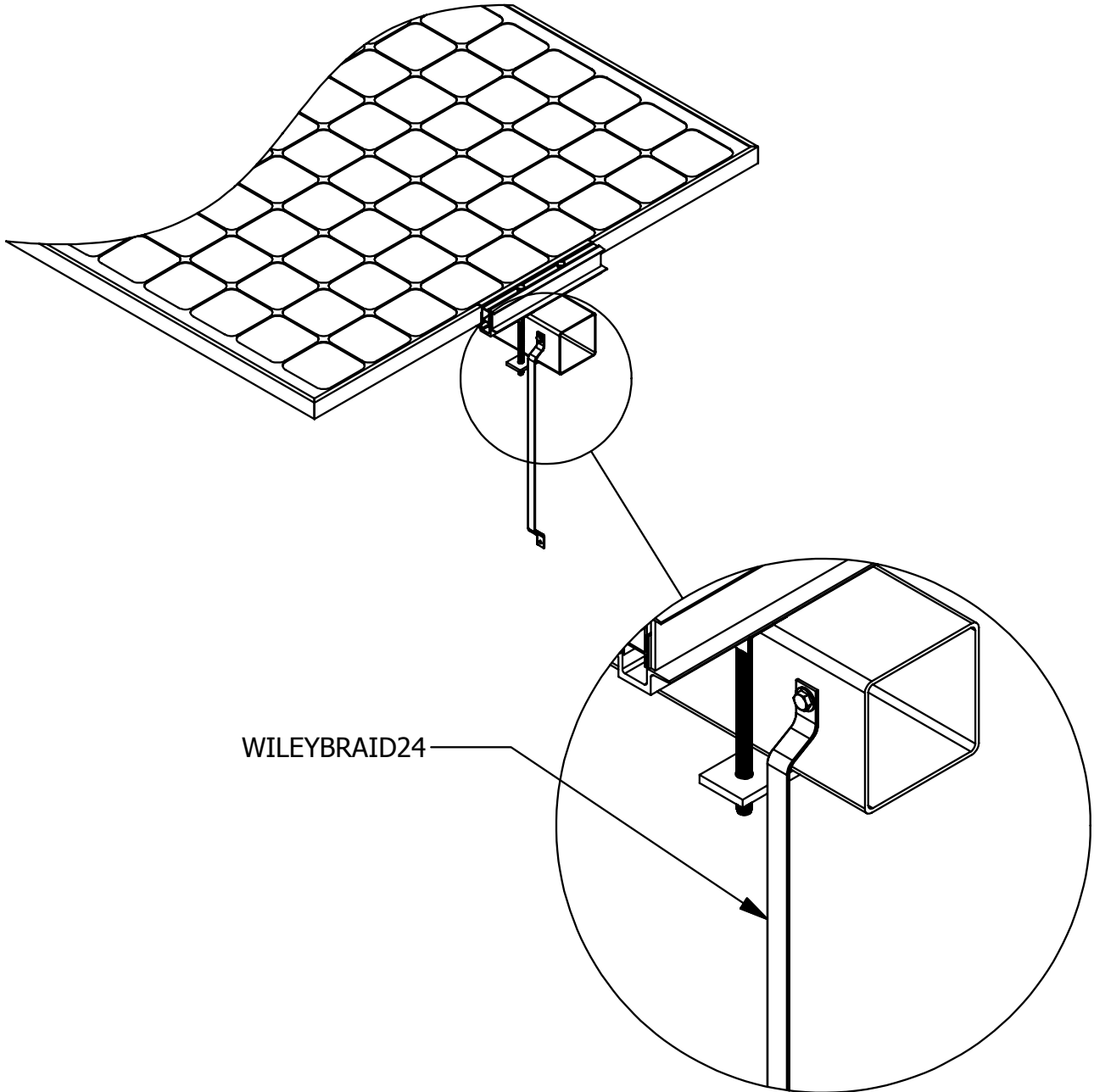
[COLUMN + 1] X ROW = [C + 1] X R = [5 + 1] X 1 = 6

WEEB-ADR NEEDED = 6

# WILEYBRAID24

8

WILEYBRAID24 can be used for bonding the Torque Tube to the Support Columns.



**Customer Service Department**

7 Aviation Park Drive

Londonderry, NH 03053

1-800-346-4175

1-603-647-5299 (International)