



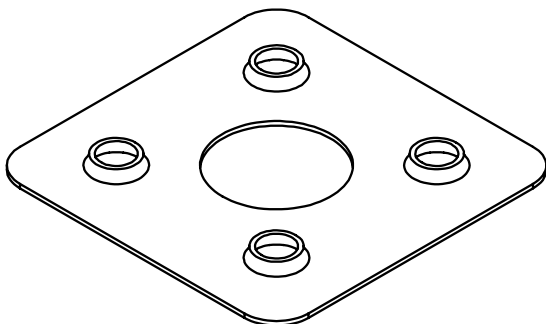
Washer, Electrical Equipment Bond

# WEEB<sup>®</sup> WASHER

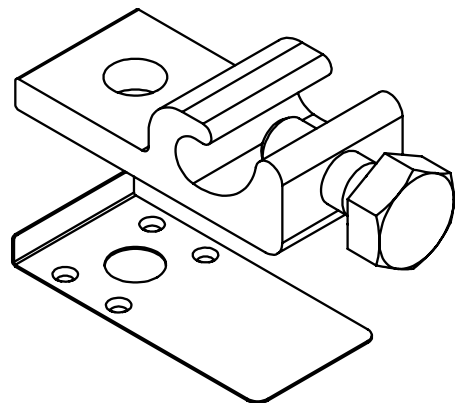
## INSTALLATION INSTRUCTIONS

### *For AP Alternatives Ground Mount System Only*

Burndy LLC recommends that the sufficient details of the installation be submitted to the AHJ for approval before any work is started.



WEEB-UIR



WEEB-LUG-6.7



Products are tested to UL 467, CAN/CSA-C22.2 No. 41  
US/ Canadian standards for safety grounding and bonding equipment.

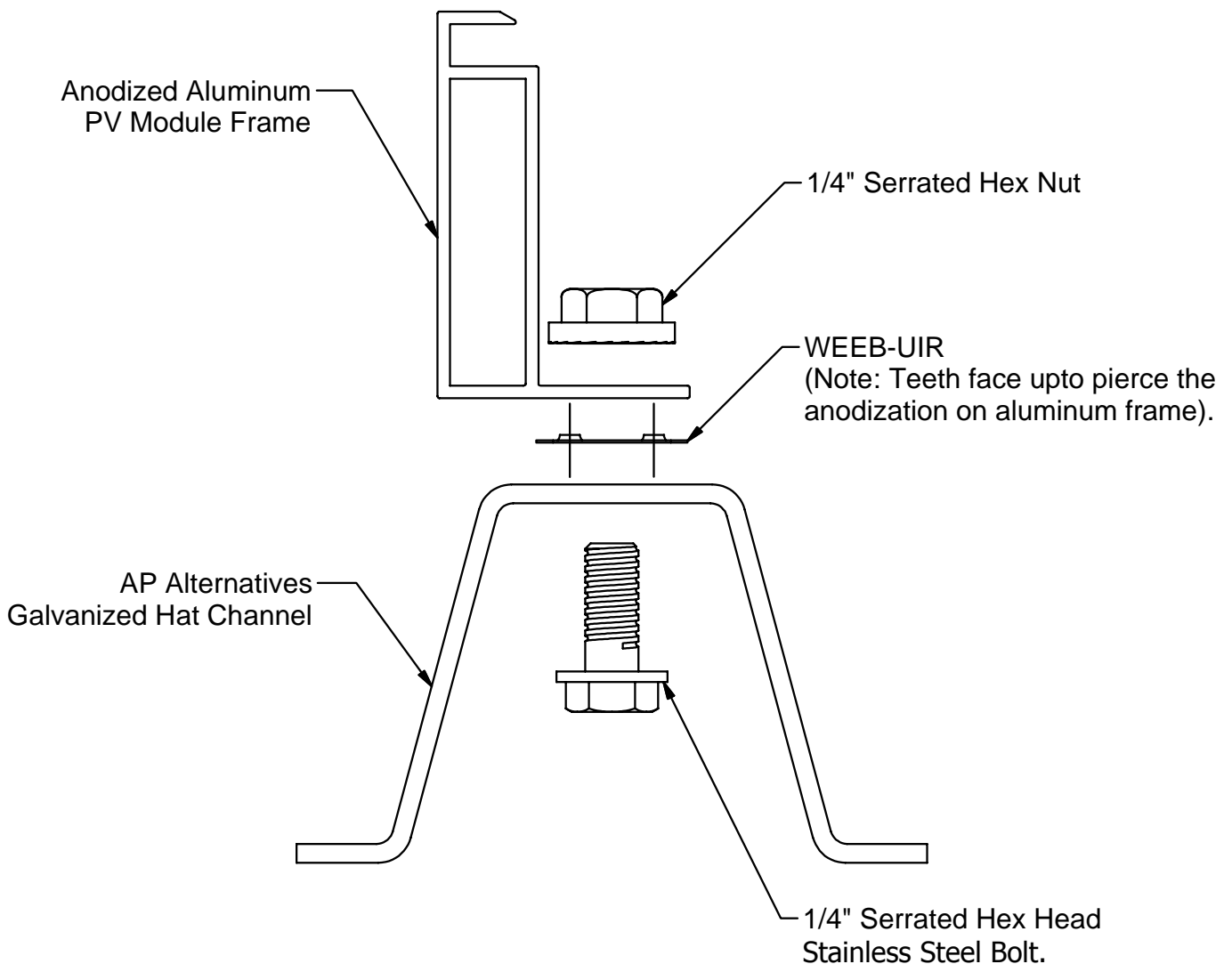


# WEEB-UIR COMPATIBILITY

The WEEB® washer family of products can be used to bond anodized aluminum, galvanized steel, steel and other electrically conductive metal structures. All installations shall be in accordance with NEC requirements in the USA and with CSA C22.1 in Canada. The WEEB® washers are for use with modules that have a maximum fuse rating of less than 25A.

## Bottom Mounting Modules

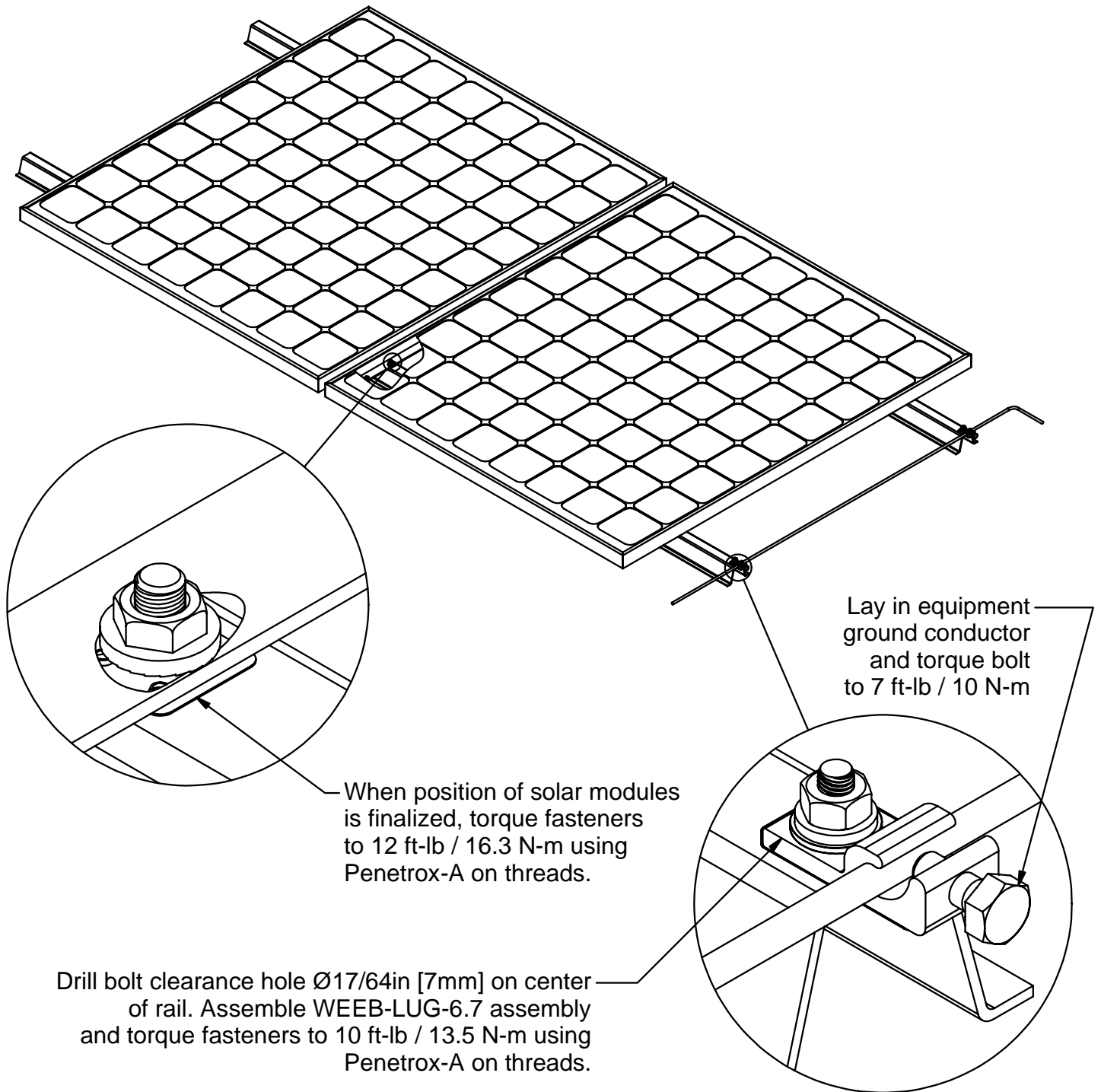
The WEEB® washers used for bonding the PV modules to the mounting rails are compatible with various cross-sections of module frames. The following is an example of a module frame that is compatible. Notice that the WEEB® washer teeth are positioned completely under the edge of the module frame. For more information regarding module compatibility, please see the technical documents section of our website.



### Note:

Inspect each module frame used with a WEEB® device to ensure that the bottom mounting face of the frame is flat, and that there are no hindrances to embedding WEEB® washer teeth. Do not use a module with a frame that prevents the WEEB® washer teeth from embedding fully.

# SYSTEM OVERVIEW



## Important notes:

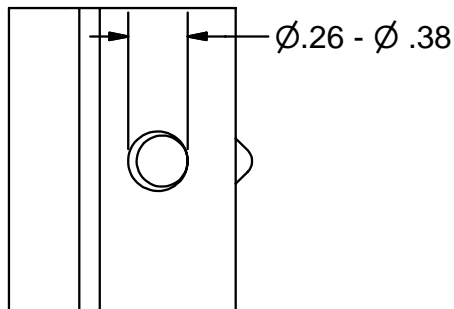
1. Use general purpose anti-seize compound on fastener threads when installing WEEB® washers.
2. The NEC section 690.43 states "Exposed non-current carrying metal parts of module frames, equipment, and conductor enclosures shall be grounded in accordance with 250.134 or 250.136(A) regardless of voltage".
3. It is necessary to remove any non-conductive coating that may be present on the hat channel in areas where the WEEB-UIR is installed.

# WEEB-UIR COMPATIBILITY

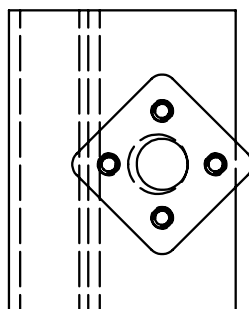
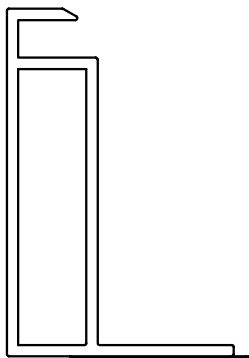
## WEEB-UIR BOTTOM MOUNT SCENARIOS This chart is only applicable with the AP ALTERNATIVES HAT CHANNEL

BOTTOM MOUNTING THE WEEB-UIR REQUIRES CERTAIN MODULE FRAME SPECIFICATIONS  
PLEASE REVIEW THE SCENARIOS BELOW TO DETERMINE  
HOW MANY WEEB-UIR'S PER MODULE ARE NECESSARY

### Clearance Hole

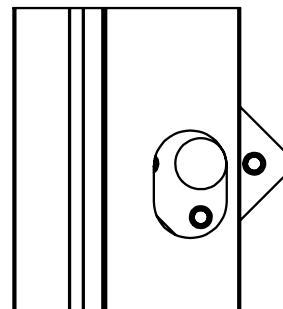


1/4" - 3/8" Module  
Mounting Hole

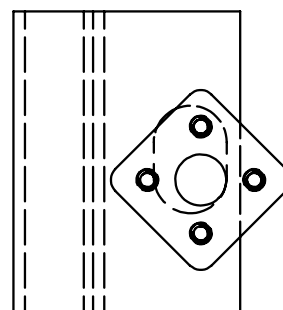
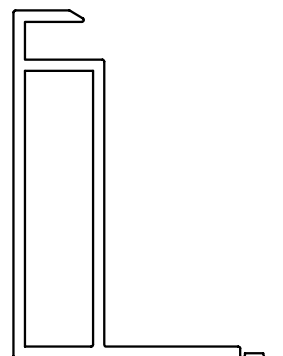


**ONLY (1) WEEB-UIR  
NEEDED PER MODULE**

### Slotted



All modules that use slotted  
mounting holes will require  
two (2) WEEB-UIR's



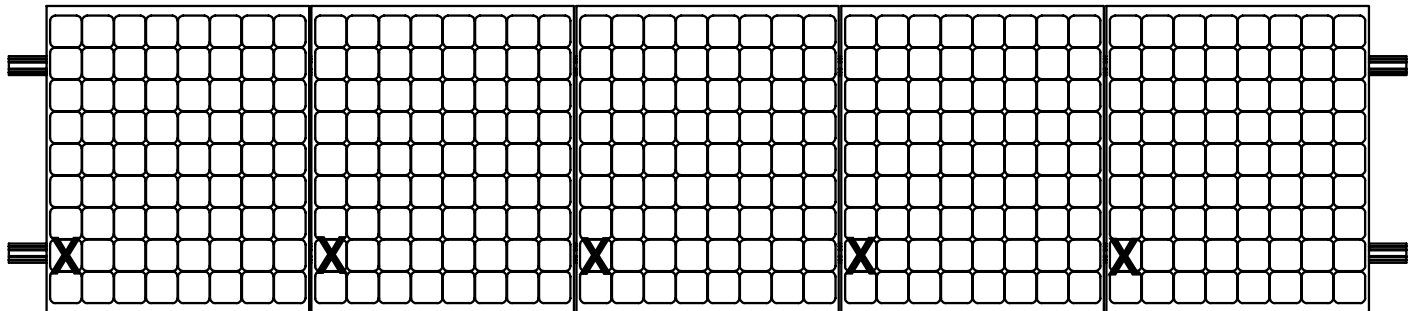
**ONLY (2) WEEB-UIR  
NEEDED PER MODULE**

**IF YOUR MODULE FRAME DOESNT FIT ANY OF THESE SCENARIO'S  
PLEASE CONTACT BURNDY TO DETERMINE FINAL COMPATIBILITY**

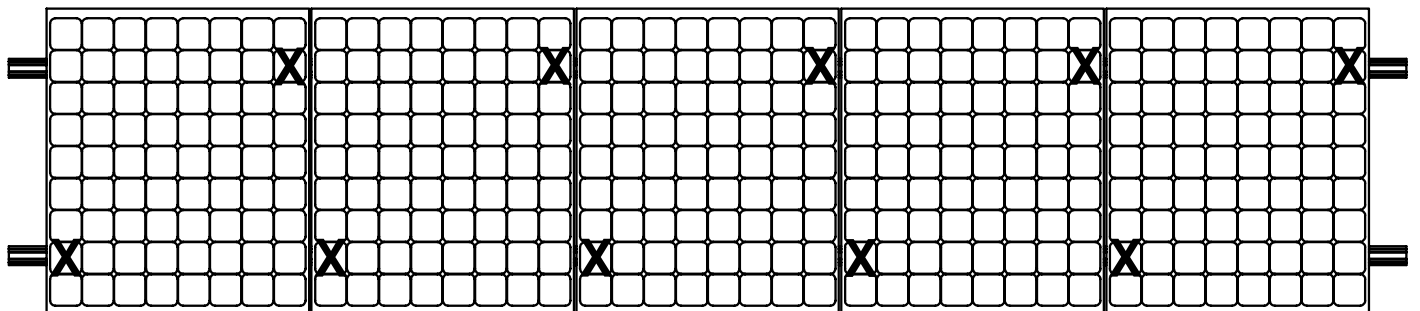
# WEEB-UIR LAYOUT

Please refer back to WEEB® washer Compatibility page to reference which mounting scenario is necessary

X DENOTES PLACES TO INSTALL WEEB-UIR



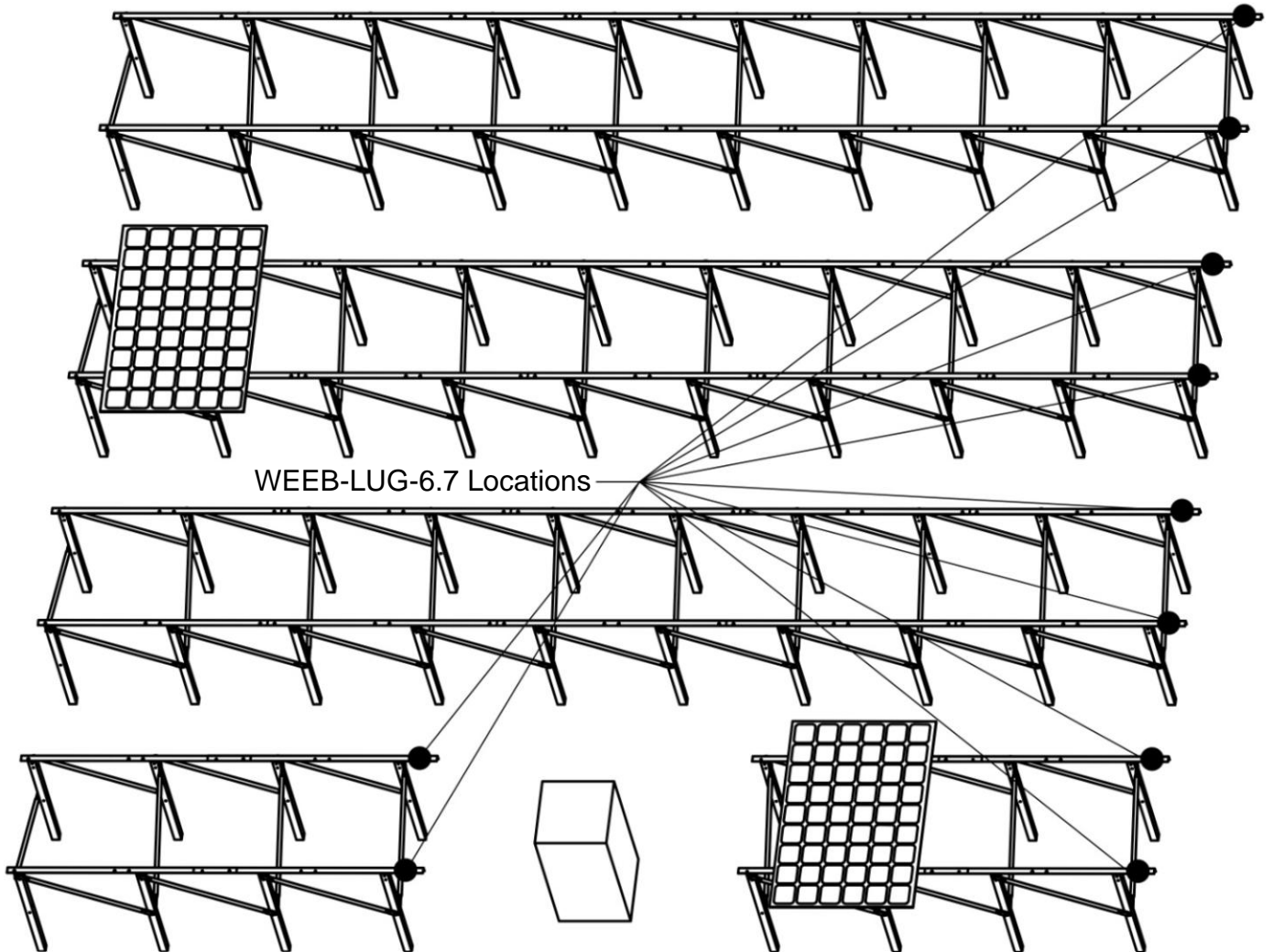
Clearance Hole



Slotted

# WEEB-LUG-6.7 LOCATIONS

Install WEEB-LUG-6.7's at the following marked locations. Lug position is the same in both portrait and landscape configurations.



**Customer Service Department**  
7 Aviation Park Drive  
Londonderry, NH 03053  
1-800-346-4175  
1-603-647-5299 (International)