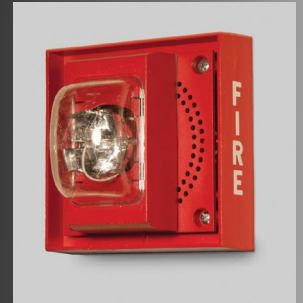




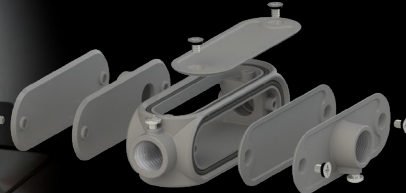
Commercial & Industrial Electrical Products For Temporary Healthcare Applications



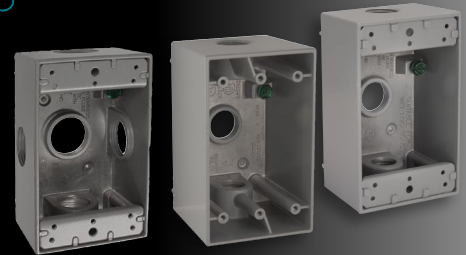
RACO Temporary Power & Life Safety Support Products



TayMac Universal Conduit Bodies



Weatherproof Boxes



Acme Electric Panel-Tran Zone Power Centers, 1 Phase & 3 Phase General Purpose Transformers



WIEGMANN Hinged Single Door & Screw Cover Enclosures



**COMMERCIAL
CONSTRUCTION**
A Division of Hubbell Incorporated (Delaware)

RACO® LIFE SAFETY SUPPORT PRODUCTS

CATALOG #	DESCRIPTION	UNPAINTED BASE	CU. IN.	STD. PKG.	KNOCKOUTS	
					SIDES COND.	BOTTOM COND.
LARGE CAPACITY STEEL WALL BOXES/Immediate Identification						
911-1	3-3/4" Sq, 3-1/2" Deep Box, Welded w/Conduit KO's, Red*	255	45.0	10	(10) 1/2"- 3/4" Conc.	(4) 1/2"- 3/4" Conc., (1) 1/2"
911-2	3-3/4" Sq, 3-1/2" Deep Box, w/Conduit KO's, Red*	256	45.0	25	(12) 1/2"- 3/4" Conc.	(4) 1/2"- 3/4" Conc., (1) 1/2"
911-15	4-11/16" Sq, 3-1/4" Deep Box, Welded w/Conduit KO's, Red	260	66.7	10	(3) 1/2"- 3/4" TKO (2) 1"- 1-1/4" TKO (2) 1"- 2" Conc. KO	(2) 3/4"- 1" TKO (2) 1/2" TKO
911-16	4-11/16" Sq,x4"Sq.x5/8" Raised Adapter, Red for Life Safety Appliances	855	8.3	25	—	—
911-17	4-11/16" Sq,x4"Sq.x5/8" Raised Adapter, Red for Life Safety Appliances	859	16.0	12	—	—
911-19	4-11/16" Sq,x4"Sq.x5/8" Raised Adapter, Red for Life Safety Appliances	205RAC	—	20	—	—
260H	4-11/16" Sq, 3-1/4" Deep Box, Weldedw/Conduit KO's, H Bracket, UBS	—	66.7	10	(3) 1/2"- 3/4" TKO (2) 1"- 1-1/4" TKO (2) 1"- 2" Conc. KO	(2) 3/4"- 1" TKO (2) 1/2" TKO

* Accepts Standard 4" Sq Covers

STEEL WALL BOXES, EXTENSION RINGS & COVERS/Immediate Identification						
911-3	4" Sq, 2-1/8" Deep Box, Welded w/Conduit KO's, Red	232	30.3	25	(8) 1/2" & (4) TKO	(3) 1/2" & (2) TKO
911-4	4" Sq, 2-1/8" Deep Box, Welded w/Conduit KO's, Red	237	30.3	25	(6) 1/2" & (3) TKO	(3) 1/2" & (2) TKO
911-9	4" Sq, 1-1/2" Deep Box, Welded w/Conduit KO's, Red	189	21.0	50	(8) 1/2" & (4) TKO	(2) 1/2" & (2) TKO
911-6	4" Sq, 1-1/2" Deep, Drawn Extension Ring w/Conduit KO's, Red	203	22.5	50	(8) 1/2" & (4) 3/4"	—
911-8	4" Sq, Flat Blank Cover, Red	752	—	50	—	—
911-12	4-11/16" Sq, 2-1/8" Deep Box, Welded w/Conduit KO's, Red	257	42.0	25	(12) TKO	(1) 1/2" & (3) TKO
911-11	4-11/16" Sq, Flat Blank Cover, Red	832	—	50	—	—

DUGOUT TRANSITION BOX						
SC082006STRC	8" x 20" Transition Box (cover included)	—	—	1	(4) 3/4" & 1" Concentric Built-in STAB-IT Clamps - 21 (14/2 to10/3) up to 42 cables	

GRAND SLAM BOX						
SC080803STRC	8" x 8" x 3" Junction Box (surface cover & ground bar included)	—	179	1	(12) 1/2" & 3/4" Concentric, (5) 3/4" & 1" Concentric Built-in STAB-IT Clamps - 4 (14/2 to10/3) up to 8 cables	
SC121204STRC	12" x 12" x 4" Junction Box (surface cover & ground bar included)	—	546	1	(12) 1/2" & 3/4" Concentric, (5) 3/4" & 1" Concentric Built-in STAB-IT Clamps - 4 (14/2 to10/3) up to 8 cables	
SC080803NKSTRC	8" x 8" x 3" Junction Box (surface cover & ground bar included)	—	179	1	Built-in STAB-IT Clamps - 4 (14/2 to10/3) up to 8 cables	
SC121204NKSTRC	12" x 12" x 4" Junction Box (surface cover & ground bar included)	—	546	1	Built-in STAB-IT Clamps - 6 (14/2 to10/3) up to 12 cables	

10-IN-1 UNIVERSAL CONDUIT BODY for RIGID/IMC or EMT / Configures to all standard bodies (LB, LR, LL, T, C)

CATALOG #	DESCRIPTION	VOLUME	PKG. TYPE	STD. PKG.
TAYMAC U-CONDUIT® 10-IN-1 UNIVERSAL CONDUIT BODY				
UCB050	1/2" Universal Conduit Body	5.8 cu in (95 cc)	Shrink Wrap	10
UCB075	3/4" Universal Conduit Body	9.5 cu in (156 cc)	Shrink Wrap	10
UCB0100	1" Universal Conduit Body	14.3 cu in (234 cc)	Shrink Wrap	10

WEATHERPROOF BOXES / Die-Cast Aluminum

CATALOG #	DESCRIPTION	CU. IN. (CM³)	PKG. TYPE	STD. PKG.
BELL® 1-GANG METALLIC BOXES				
5320-0	2" Deep, w/Lugs, (3) 1/2" threaded outlets	18.3 cu in (299.9)	Shrink Wrap	20
5332-0	2" Deep, w/Lugs, (5) 3/4" threaded outlets	18.3 cu in (299.9)	Shrink Wrap	20
5385-0	2-5/8" Deep, w/Lugs, (3) 1/2" threaded outlets	22.5 cu in (368.7)	Shrink Wrap	15

ACME / Transformers

CATALOG #	kVA	DESCRIPTION	SECONDARY MAX. CCT.		HEIGHT In (Cm)	WIDTH In (Cm)	DEPTH In (Cm)	WEIGHT Lbs (Kg)
			120V (1-pole)	240V (2-pole)				
PANEL-TRAN, SNAP-IN BREAKERS								
PT061150005LS	5.0	Snap-in Breakers, 480 Primary Volts - 240/120 Secondary Volts - 1Ø, 60Hz	8	4	32.13 (8.16)	13.25 (33.7)	7.63 (19.4)	120 (54.4)
PTBA3150030LS	30.0	Snap-in Breakers, 480 Delta Primary Volts - 280Y/120 Secondary V - 3Ø, 60Hz	24	8	43.75 (111.1)	33.00 (83.8)	13.75 (13.75)	680 (308.0)

CATALOG #	kVA	DESCRIPTION	HEIGHT In (Cm)	WIDTH In (Cm)	DEPTH In (Cm)	WEIGHT Lbs (Kg)	MOUNT TYPE	KO'S In (Cm)	ELECTROSTATIC SHIELD (optional)	WIRING DIA.	DESIGN FIG.
DRY-TYPE DISTRIBUTION TRANSFORMER - DOE/NRCAN 2019 Compliant											
T3075K0013B	75.0	480 Delta Primary Volts - 280Y/120 Secondary V May be used on a 4 Wire 480Y/277 V Supply - 3Ø, 60Hz	29.41 (74.7)	28.15 (71.5)	22.37 (56.8)	600 (272.2)	FⓈ	NA	YESⓈ	22*	E*

Ⓢ Wall mounting brackets are available for this size, refer to pg. 41 in Sec. 1 of the ACME Electric Catalog.

Ⓢ Add "S" to part number

* For Design Figures, see pg. 35 in Sec. 1 of the ACME Electric Catalog.

WIEGMANN ENCLOSURES

CATALOG #	DESCRIPTION	SIZE	KNOCKOUTS	FINISH	LATCH TYPE	MOUNT
HINGED SINGLE DOOR ENCLOSURES - WALL MOUNT						
N12242412	NEMA 12 - Carbon Steel, Gray, ANSI 61, Continuously Welded Seams *	24 x 24 x 12	—	Smooth	Clamps	External
N412242412C	NEMA 4 - Carbon Steel, Gray, ANSI 61, Continuously Welded Seams *	24 x 24 x 12	—	Smooth	1/4 Turn	Holes
SCREW COVER						
RSC060604	NEMA 3R - Carbon Steel, Gray *	6 x 6 x 4	YES	Textured	Padlocking	Wall

* For more sizes please refer to the WIEGMANN Catalog or go online at www.hubbell.com/wiegmann/en



COMMERCIAL CONSTRUCTION
A Division of Hubbell Incorporated (Delaware)

www.hubbell.com/raco/en
www.hubbell.com/taymac/en
www.hubbell.com/bell/en

www.hubbell.com/acme/en
www.hubbell.com/wiegmann/en