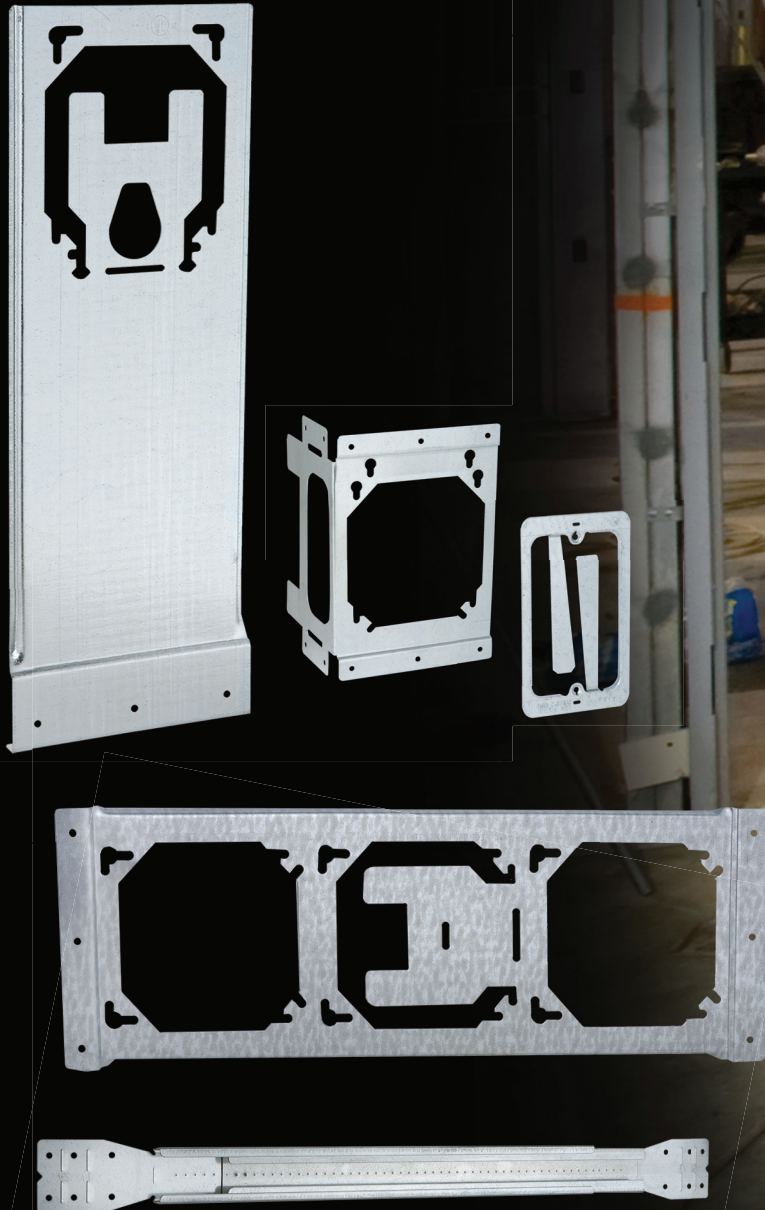




Commercial, Industrial and Residential Electrical Products

BOX POSITIONING SOLUTIONS



***new construction
and prefabrication***

***metal and wood
stud construction***

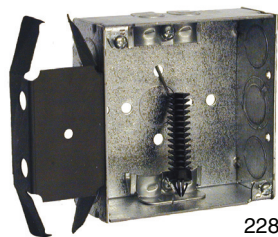


HUBBELL COMMERCIAL CONSTRUCTION
A Division of Hubbell Incorporated (Delaware)

www.hubbell.com/raco/en

BRACKETED BOXES

BOX-LOC® The Quickest Metal Stud Bracket You Can Use!



228 BOX-LOC®



980 BOX-LOC®
Metal Stud Clip



978 Far-side
Box Support

Fast, Easy Installation

Since no hardware is needed to install RACO® BOX-LOC®, installation is as easy as 1-2-3. Here's how to install:

- 1** Press the BOX-LOC bracket onto the stud until it locks tightly into place.
- 2** Because the BOX-LOC is made of spring steel, it may be manually repositioned on the stud by pulling the legs of the bracket aside.
- 3** The optional RACO #978 non-metallic far-side box support can be snapped into the hole located at the back of the box.

Preassembled Boxes

Cat. No.	Description	Box Size	Box Depth	Knockouts or Clamps			Std. Pkg.	Cu. In. Cap.
				Sides		Bottom		
				Cable	Conduit	Conduit		
227	Conduit Box *	4" SQ	1-1/2"		6-1/2", 3-TKO	3-1/2", 2-TKO	25	21.0
228	NM Cable Clamps *	4" SQ	1-1/2"	4	2-1/2", 1-TKO	1-1/2"	25	21.0
229	BX-MC Clamps *	4" SQ	1-1/2"	4	2-1/2", 1-TKO	1-1/2"	25	21.0
238	Conduit Box *	4" SQ	2-1/8"		6-1/2", 3-TKO	3-1/2", 2-TKO	25	30.3
243	BX-MC Clamps *	4" SQ	2-1/8"	4	2-1/2", 1-TKO	1-1/2"	25	30.3
266	Conduit Box *	4-11/16"	2-1/8"		9-TKO	1-1/2", 3-TKO	25	42.0
978	Far-side Box Support						50	
980	Box-Loc Clip						50	

* Includes 978 Far-side Box Support

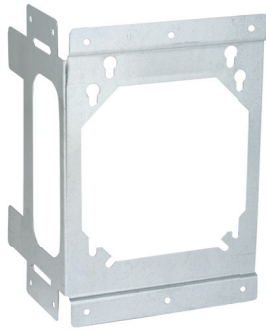
Application

For quick, secure hardware-free installation of box on either side of metal stud.

Features

- Since the RACO box and BOX-LOC bracket are pre-assembled and riveted, on site assembly is eliminated.
- Integrated brackets position the box flush with the stud so box is perfectly positioned to mount a raised cover.
- Boxes can be installed on the open or closed side of steel studs.
- No hardware or special tools are needed to install RACO BOX-LOCs.
- The 980 BOX-LOC clip works with any steel electrical box. Simply clip the RACO BOX-LOC on the side edge of the box for quick, trouble-free installation.
- RACO 978 Far Side Box Support simply snaps into hole in back of box and easily cuts to fit depth of cavity.

BRACKETS



Two-Point Box Mounting Brackets

Catalog Number	Description	Std. Pkg.
9018	Left or right side stud mount	100

Application

Supports electrical boxes when mounted to stud.

Features

- Dual-point mounting ensures a secure, stable installation.
- When properly mounted, the leg cannot be bent by other trades during the construction process.
- Mounts 4" or 4-11/16" square boxes (9040 for 4" square only) to 2-1/2", 3-1/2", 4" and 6" studs.
- Box can be mounted on bracket without raised cover to save time by providing maximum working area inside box.
- When mounted, drywall ring is brought to within 1/16" of drywall every time and will not bulge or break out drywall.



Low Voltage Mounting Bracket

Catalog Number	Description	Std. Pkg.
9008	New or Old Work, Single-gang	100
9017	New or Old Work, Single-gang	20 bags*

Application

Mounts standard low voltage wall plates, old work (existing walls) or new work (wood or metal studs).

Features

- For use on low voltage Class 2 circuits only where electrical boxes are not required.
- Can be used to mount telephone jacks, computer outlets, security/sound systems, television antennas, etc.
- Fast, precise mounting of low voltage wall plates to walls or studs.

*2 brackets per poly-bag with UPC barcode

Fixed Position Box Mount Brackets

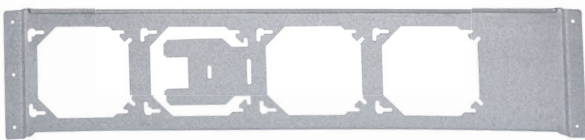
Catalog Number	Description	Std. Pkg.
9001	3-box, for 16" on center studs	50
9002	4-box, for 24" on center studs	50

Application

Positions electrical boxes, plaster rings, and low voltage devices between studs.

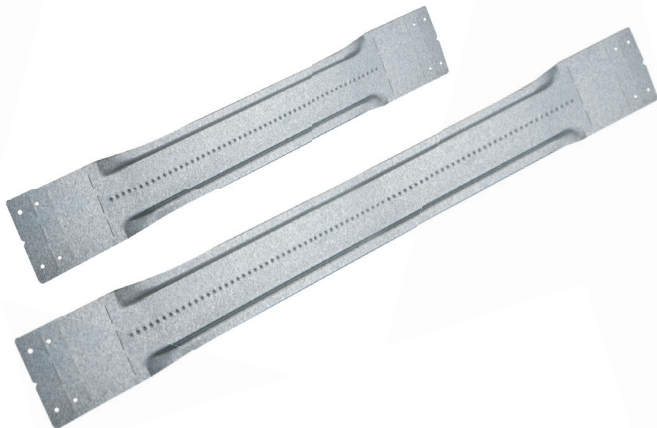
Features

- Fold-back stabilizer leg prevents bracket from being pushed back in wall cavity during sheet rock installation.
- Designed for 2-1/2" or 3-1/2" studs. Add RACO® 9016 to leg to accommodate 6" depth studs.
- Mounts 4" or 4-11/16" square boxes.
- Box can be mounted on ring without raised cover to save time by providing maximum working area inside box.
- When mounted, raised cover is brought to within 1/16" of drywall every time and will not bulge or break out drywall.



BRACES

For Metal or Wood Stud Box Positioning



Non-adjustable Box Mounting Brace

Catalog Number	Description	Std. Pkg.
9004R	For 16" stud spacing, 1-1/2" & 2-1/8" deep	50
9006R	For 24" stud spacing, 1-1/2" & 2-1/8" deep	50

Application

Positions and supports electrical boxes between studs.

Features

- Available for 1-1/2" or 2-1/8" deep boxes, 16" or 24" stud spacing.
- Locator dimples on face of bar allows for exact positioning of single or multiple boxes.
- Dimple feature provides quick start of screws, and reinforcement to prevent box mounting screws from stripping out when box is mounted.

Adjustable Box Brace

Catalog Number	Description	Std. Pkg.
9013R	Adjusts from 10-3/8" to 18", 1-1/2" & 2-1/8" deep	50
9015R	Adjusts from 15" to 26", 1-1/2" & 2-1/8" deep	50

Application

Positions and supports electrical boxes between studs.

Features

- Available for 1-1/2" and 2-1/8" deep boxes.
- Dimples positioned along entire length of bar for precision mounting of box, and quick screw starts.
- Boxes attach easily with self-tapping screws.
- Design of bar allows ground screw to clear when box is mounted.

BOX SUPPORTS



Floor Mounted Box Support

Catalog Number	Description	Std. Pkg.
9009	12" tall bracket	25
9010	18" tall bracket	25

Application

Supports electrical boxes from floor or concrete forms.

Features

- Fold-back stabilizer prevents bracket from being pushed back in wall cavity during sheet rock installation. Designed for 2-1/2" or 3-1/2" studs. Add RACO® 9016 to leg to accommodate 6" depth studs.
- Designed for mounting square boxes 12" or 18" above floor. Mounts to either metal or wood plate.
- Mounts 4" or 4-11/16" square boxes.
- Box can be mounted on support without drywall ring to save time by providing maximum working area inside box.
- When mounted, raised cover is always brought to within 1/16" of drywall and will not bulge or break out drywall.