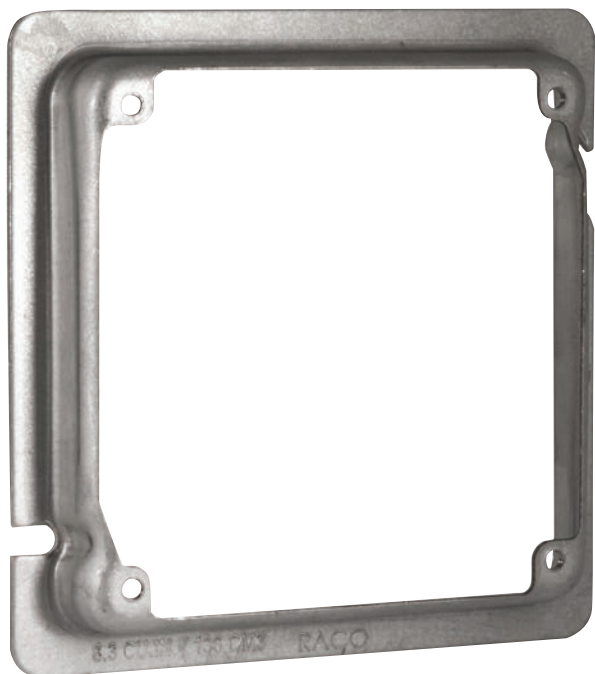


RACO® ADAPTER RING



**4-11/16" Sq. x 4" Sq.,
Raised 5/8" + 1-1/4"**

Application

Designed to reduce 4-11/16" square box to 4" square box openings.

Features

- Four tapped mounting tabs (8-32 threads)
- Installs like a 4-11/16" square mudring
- Works with standard box positioning brackets
- Provides flush mounting of lighting controllers, exit signs, life safety appliances, etc.
- Available in Red for systems identification

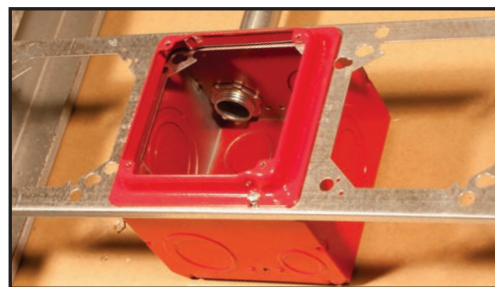
Cat. No. 855



Available in Red for systems identification, Cat. No. 911-16



Installs like a mud ring and works with most box positioning brackets



Catalog No.	Description	Raised	Std. Pkg.	Cubic Inch Capacity
855	4-11/16" Sq. x 4" Sq. Adapter Ring	5/8"	25	8.3
911-16	4-11/16" Sq. x 4" Sq. Adapter Ring, Red	5/8"	25	8.3
859	4-11/16" Sq. x 4" Sq. Adapter Ring,	1-1/4"	12	16.0
911-17	4-11/16" Sq. x 4" Sq. Adapter Ring, Red	1-1/4"	12	16.0