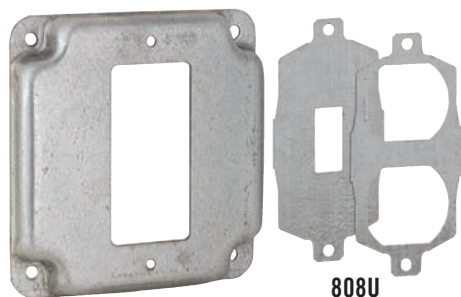
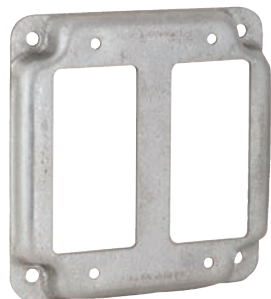
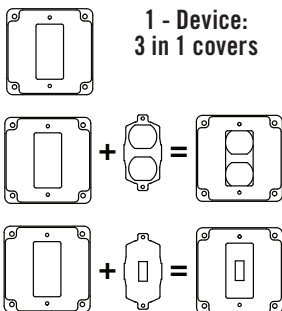




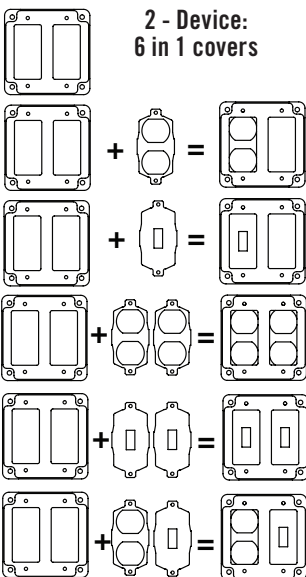
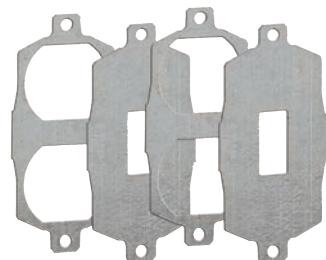
UNIVERSAL EXPOSED WORK COVERS



808U



809U



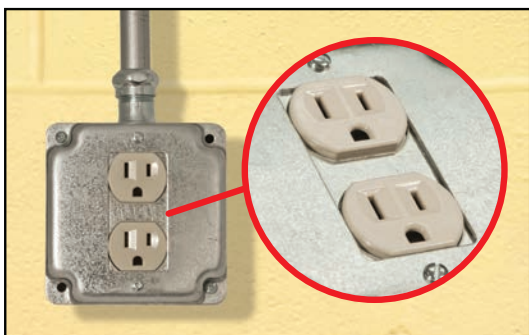
For use with 4" square box

Application

Surface covers are used to support switches or receptacles in areas where the box is surface mounted or positioned in exposed work applications.

Features

- Duplex and Toggle Switch adapter plates are included, which provide flexibility during cover installation
- For GFCI, Duplex, or Toggle Switch
- Ideal for service trucks
- Carry fewer SKU's - reduce inventory dollars
- RACO exposed work covers include required hardware for mounting the device(s)
- RACO exposed work covers meet the requirements of the 2008 NEC Article 250.146(A)
- Cover, plates and hardware are packed in a polybag with printed catalog number, configurations and compliance
- Inserts and covers are made of zinc galvanized coated steel
- Made in USA



US Patents
6,642,453; 7,348,486; 7,345,238; 7,176,379; 6,872,887

Catalog Number	Description	Cu. In.	Std. Pkg.	UPC-A Bar Code	Unit Carton 12 of 5
808U	3 in 1 Universal Exposed Work Cover: GFCI, Duplex, or Toggle	6.5	10	050169978085	50050169978080
809U	6 in 1 Universal Exposed Work Cover: GFCI, Duplex, or Toggle	6.5	10	050169978092	50050169978097