

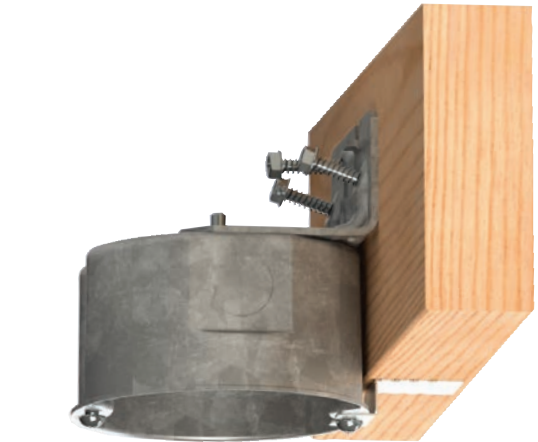


4" ROUND, 2-1/8" DEEP, BRACKETED CEILING BOX

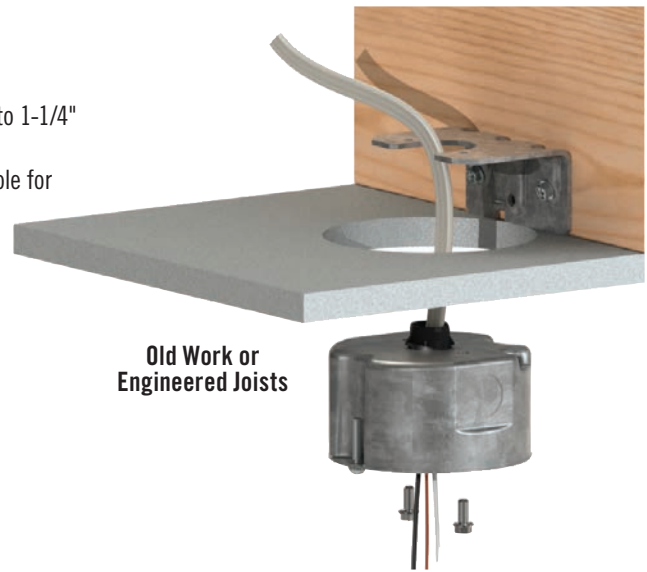
Designed for ceiling fan or heavy light fixture support in new work and old work applications



cULus
LISTED
Outlet Box
731A



New Work



Old Work or
Engineered Joists

Features

- Patent pending bracket design allows for new work and old work applications
- 2, 1/2" side knockouts, parallel to joists
- Setback tab allows for easy installation in different ceiling thicknesses - 1/2" to 1-1/4"
- No exposed threads or sharp edges to damage wire
- Grade 5 #10-32 ceiling fan screw provided (1" long): Threaded into extruded hole for superior strength
- #8-32 tapped holes for ceiling fixture mounting
- Metal protection plate eliminates debris or damage to wiring
- Ideal for engineered joists
- Easy to follow instructions and mounting hardware included
- INSIDER nonmetallic sheathed cable connector included
- cULus Listed
- One tool installation - Only #2 Phillips screwdriver required



Catalog No.	Description	Knockouts		Std. Pkg.	UPC-A Bar Code	Recommended Maximum Support Loads	
		Side Conduit	Bottom Conduit			Ceiling Fan (Dynamic) Lbs.	Fixture (Static) Lbs.
294	Merchandised Packaged*	2, 1/2"	1, 1/2"	10	050169002940	70	70/150**
294-1	Contractor Pack	2, 1/2"	1, 1/2"	10	—	70	70/150**

*Individual display cartons

**New work applications rated at 150 Lbs., Old work applications rated at 70 Lbs.

US Patent 7,148,420
Other Patents Pending