



UNIVERSAL EXPOSED WORK COVERS

For use with 4" square box

Application

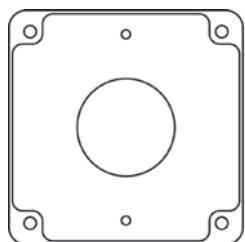
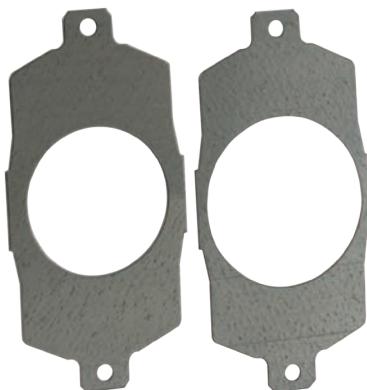
Surface covers are used to support receptacles in areas where the box is surface mounted or positioned in exposed work applications.

Features

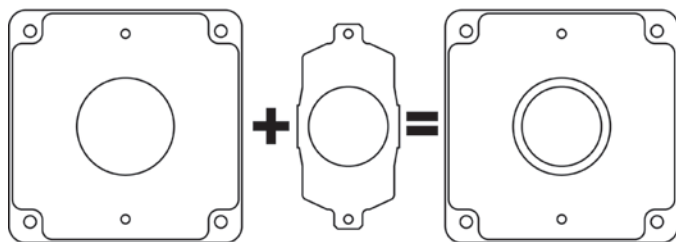
- Adapter plates are included, which provide flexibility during cover installation
- For round single devices
- Ideal for service trucks
- Carry fewer SKU's - reduce inventory dollars
- RACO exposed work covers include required hardware for mounting the device
- RACO exposed work covers meet the requirements of the 2008 NEC Article 250.146(A)
- Cover, plates and hardware are packed in a polybag with printed catalog number, configurations and compliance
- Inserts and covers are made of zinc galvanized coated steel
- Made in USA



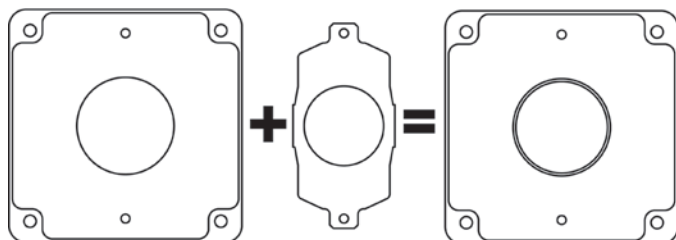
811U



1.709" Dia. Hole



1.405" Dia. Hole



1.620" Dia. Hole



LISTED
Covers for
Outlet Boxes
731A

US Patents: 6,642,453; 7,348,486; 7,345,238; 7,176,379; 6,872,887

Catalog Number	Description	Cu. In. Capacity	Std. Pkg.	UPC-A Bar Code	Unit Carton 12 of 5
811U	3 in 1 Universal Exposed Work Cover	6.5	10	050169978115	50050169978110