

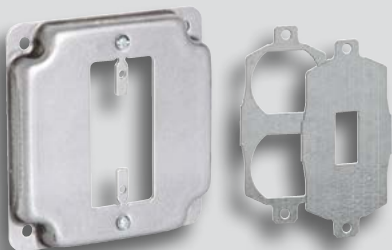


# *Service Truck Solutions*

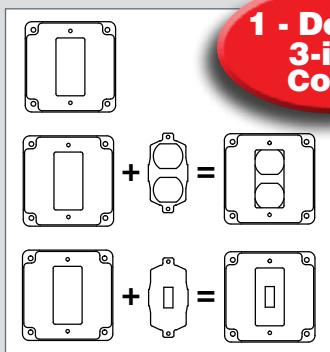


**Reduce SKU's and Save Time with  
Innovative Products by**

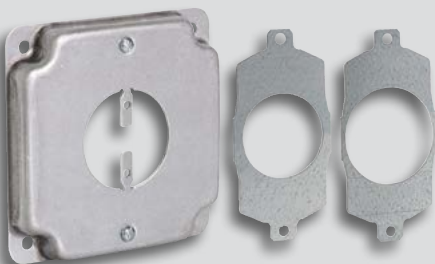




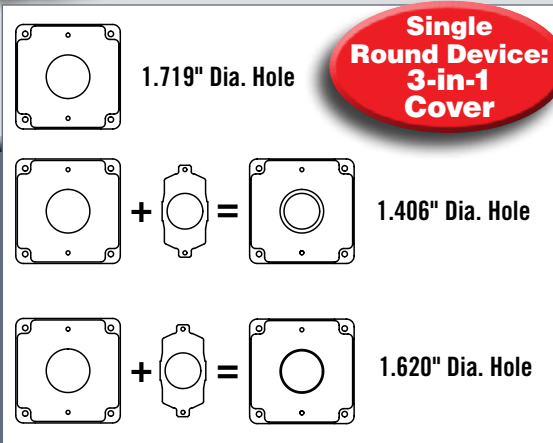
Catalog No.  
808U



**1 - Device:  
3-in-1  
Cover**

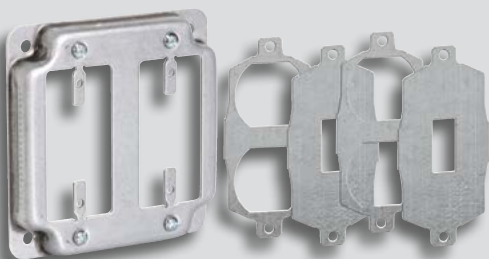


Catalog No.  
811U



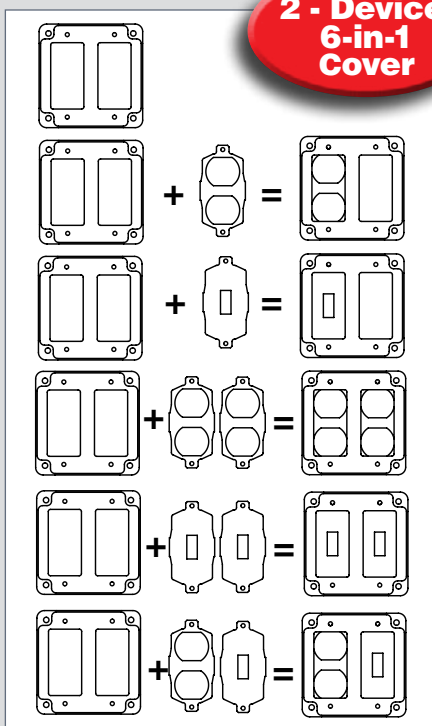
**Single  
Round Device:  
3-in-1  
Cover**

# Exposed Work Covers



Catalog No. 809U

**2 - Device:  
6-in-1  
Cover**



## Features

- Adapter plates are included, which provide flexibility during cover installation
- For GFCI, Duplex, Toggle Switch or Round Devices
- Ideal for service trucks
- RACO exposed work covers include required hardware for mounting the device(s)



# RETRO-RING®



Catalog No.  
232-0W

**1 OR 2  
Devices**



Catalog No.  
206RAC



## Features

- RACO® 206RAC is used in old work installations where one or two devices are required; with or without box for low voltage applications
- RACO® 2320W is designed to position a 4" square junction box at any point in an existing wall. No stud support required
- Allows 4" square box to be quickly and easily mounted in old work application
- One or two devices mount directly to RETRO-RING
- Includes one template per carton for easy trace-&-cut-out



# U•CONDUIT

## 10-IN-1 UNIVERSAL CONDUIT BODY for RIGID/IMC or EMT

*Configures to all standard  
bodies ( LB, LR, LL, T, C )*



*Reducer bushings for  
smaller conduit/fittings*

**UCB050 - 1/2"**

**UCB075 - 3/4"**

**UCB0100 - 1"**

- Suitable for weatherproof installs
- Use set screws for EMT conduit, and threaded hubs for threaded Rigid/IMC conduit or fittings
- Lightweight, Durable TAYMAC TUFF Die Cast Aluminum Construction
- Seamless pre-affixed gasket and self-aligning covers/panels
- More wiring capacity than standard bodies and meets 2014 NEC 314.16(C)(2) for volume marking
- Captive screws with attached O-ring for ease of use and a weatherproof seal
- Includes 4 steel reducer bushings in the 1" size – (2) 1" to 3/4", (2) 1" to 1/2"; and (2) 3/4" to 1/2" bushings in the 3/4" size
- Not suitable for use in hazardous location applications
- Includes (1) body, (3) blank covers/panels, (1) T panel, (1) LL/LB/LR panel, reducer bushings, (1) closure plug and extra hardware



## CODEGUARD™

### MKG420CS



- High quality Hubbell WRTR GFCI included
- Lockable tab for full-size padlock
- Horizontal or vertical mount
- Three 1/2" threaded hub weatherproof box

### MG420CS



- High quality Hubbell WRTR GFCI included
- Lockable tab for full-size padlock
- Horizontal or vertical mount

### MM420C



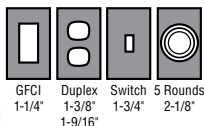
- Lockable tab for full-size padlock
- Horizontal or vertical mount

### ML500G



- Expands from 1" to 3" for while-in-use needs
- Horizontal or vertical mount
- Can be used as flip cover and an NEC compliant WIU cover

**16<sup>in</sup>1**  
CONFIGURATIONS



**EXTRA DUTY**  
Meets 2014 NEC



### MX1050S

- Horizontal or vertical mount
- Lockable tab



**12<sup>in</sup>1**  
CONFIGURATIONS

