

STEEL BOXES
COVERS
FITTINGS
ACCESSORIES

RACO

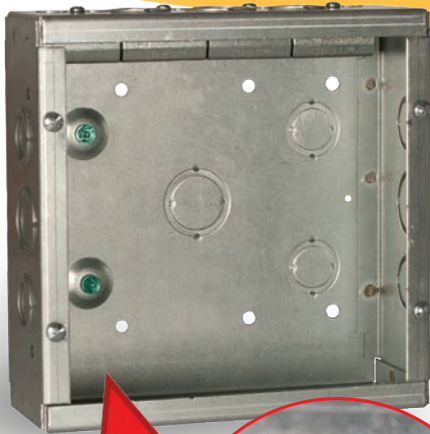
Commercial, Industrial and Residential Electrical Products

RACO

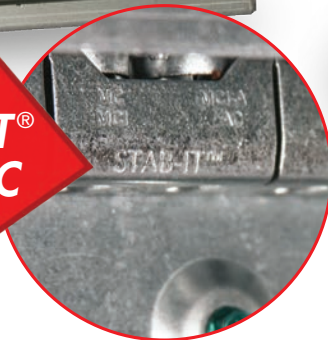
GRAND SLAM BOX

“Better than a Home Run”

NEW!



with
built-in STAB-IT®
clamps for MC

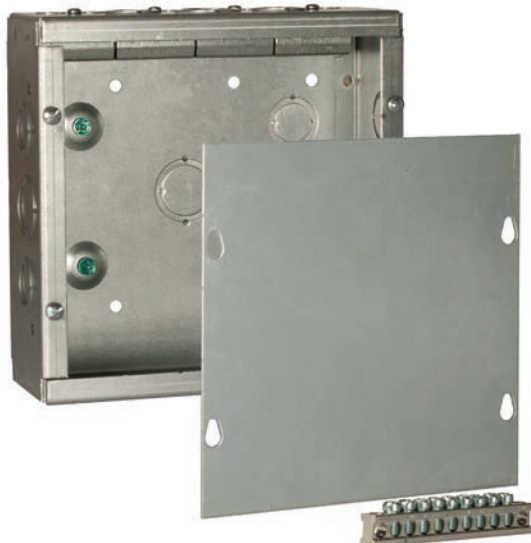


Application

RACO's Grand Slam Box is the quickest and easiest way to terminate home runs and other electrical wiring. Specifically designed for commercial applications, the Grand Slam Box offers both the flexibility and space desired in a junction box. Featuring RACO's patented STAB-IT® clamps for MC built-in, the Grand Slam Box offers the most labor savings and flexibility of any home run box on the market.

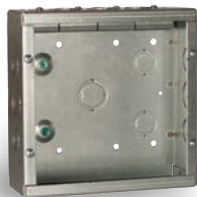
Features

- Patented STAB-IT® clamp has been tested at over 3X's faster than traditional MC connectors
- Designed for quick installation of flex, MC, MCI, MCI-A, HCF, AC and EMT
- Surface mount cover and ground bar included
- Available in two sizes to meet customer preference and job requirements
- Two raised grounds for installation flexibility
- Available with concentric knockouts on side and back for easy access
- UL Listed

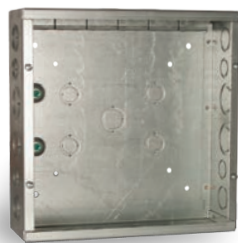


Surface Mount Cover and
Ground Bar Included

EC&M.
Product of the Year
2018 Category Winner



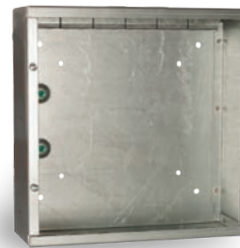
SC080803STRC



SC121204STRC



SC080803NKSTRC



SC121204NKSTRC

SC080803STRC	8" x 8" Junction Box (Surface Cvr. & Grnd. Bar Included)	8" x 8" x 3"	(12) 1/2" & 3/4" Concentric (5) 3/4" & 1" Concentric	4 (14/2 to 10/3) Up to 8 Cables	179	1
SC121204STRC	12" x 12" Junction Box (Surface Cvr. & Grnd. Bar Included)	12" x 12" x 4"	(12) 1/2" & 3/4" Concentric (9) 3/4" & 1" Concentric (8) 1" & 1-1/4" Concentric	6 (14/2 to 10/3) Up to 12 Cables	546	1
SC080803NKSTRC	8" x 8" Junction Box (Surface Cvr. & Grnd. Bar Included)	8" x 8" x 3"	—	4 (14/2 to 10/3) Up to 8 Cables	179	1
SC121204NKSTRC	12" x 12" Junction Box (Surface Cvr. & Grnd. Bar Included)	12" x 12" x 4"	—	6 (14/2 to 10/3) Up to 12 Cables	546	1



Flush Mount Cover
(sold separately)



STAB-IT
Connector

SCF0808RC	Flush Mount Cover	8" x 8"	1
SCF1212RC	Flush Mount Cover	12" x 12"	1
989ST	STAB-IT® Connector (accepts 2 cables) Works with all Grand Slam boxes	x	50

CABLE TYPES AND RANGES FOR STAB-IT® II CLAMP

CABLE TYPE	CABLE RANGE
AC STEEL & ALUMINUM	14-2, 14-3, 14-4, 12-2, 12-3, 12-4, 10-2, 10-3
HCF AC STEEL	14-2, 14-3, 14-4, 12-2, 12-3, 10-2, 10-3
HCF AC ALUMINUM	12-2, 12-3, 12-4, 10-2, 10-3
MC STEEL & ALUMINUM	14-2, 14-3, 14-4, 12-2, 12-3, 12-4, 10-2, 10-3
MCI-A STEEL & ALUMINUM	14-2, 14-3, 14-4, 12-2, 12-3, 12-4, 10-2, 10-3
HCF MCI-A STEEL	12-2, 12-3, 10-2
HCF MCI-A ALUMINUM	14-2, 14-3, 14-4, 12-2, 12-3, 12-4, 10-2, 10-3
MC-PCS STEEL & ALUMINUM	12-2/16-2
HCF MC-PCS ALUMINUM	12-2/16-2
3/8 TRADE SIZE FLEX. RWFMC CONDUIT STEEL & ALUMINUM	Anti Short Bushing Required

CABLE RANGE .400" DIA. MIN. TO .625" DIA. MAX.

Cable Armor must comply with NEC 250.96.
For cable diameter larger than 0.55", reset spring clip as shown on instructions.
To remove cable:
Loosen up screw, pull spring clip away from cable and pull cable out. See instruction sheet.
To install more cables use any of the knockouts with RACO® REDI-LOC® connectors.



**COMMERCIAL
CONSTRUCTION**
A Division of Hubbell Incorporated (Delaware)

RACO
3902 W. Sample St.
South Bend, IN 46619
574-234-7151
www.hubbell.com/raco/en



Literature Code#
RA-430 rev3