

**PRODUCT SOLUTIONS FOR
ELECTRICAL PREFABRICATION**
SAVE TIME, MATERIAL, AND MONEY



YOUR ONE SOURCE FOR ELECTRICAL PREFAB SOLUTIONS

The commercial construction industry is moving to pre-fabrication or “prefab.” Electrical contractors are setting up their own prefab shops to pre-assemble electrical components before sending them to jobsites. No further prep needed on site. It’s an opportunity to save time, materials, and money. Assembling components under controlled conditions helps you ensure quality control. Shipping assemblies to the jobsite reduces labor costs for both rough-in and trim-out stages of a project.

SINGLE SOURCE SOLUTION

It’s easy to start. You need a workbench and basic tools in the shop, along with components shipped direct to you. RACO® now provides you one source electrical prefab components. This not only streamlines the process for you, it also eliminates errors when ordering:

- Electrical boxes
- Mounting brackets
- Cable management
- Mud rings

BENEFIT WITH RACO® PRODUCTS

- Lower material and jobsite labor costs
- Pre-wiring devices off-site maintains quality control
- Finish the rough-in phase of the job faster
- Minimizes jobsite packaging waste and scrap, clean up time, and theft

Additionally, our prefab line includes innovative products that save even more time in the shop or on the jobsite. Discover them on the following pages.

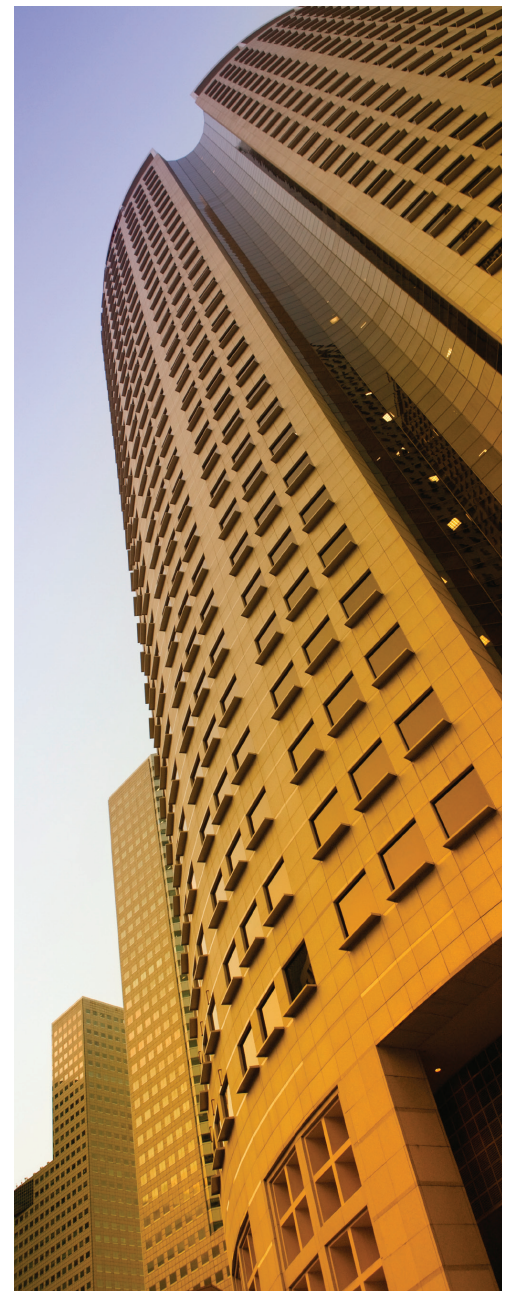
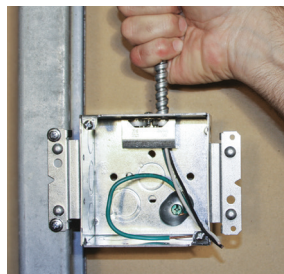


TABLE OF CONTENTS

4" SQUARE BOXES	4	STAB-IT® BOX ASSMBLIES FOR PRE-FAB	10-11
4 1/16" SQUARE BOXES	5	BRACES AND BRACKETS	12
GRAND SLAM JUNCTION BOXES	6	BOX AND CABLE SUPPORTS	13-14
GANGABLE AV WALL BOXES AND TRANSITION BOX	7	BOX ACCESSORIES	15
LARGE CAPACITY WALLBOXES	8	BOX SUPPORTS - CEILING	16
BLOCK LOC® MASONRY BOXES	9		

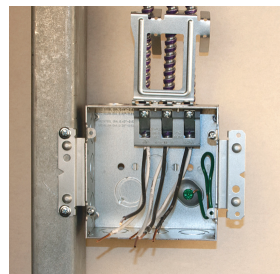
RACO's prefab components save time with unique installation efficiency features. Increase productivity during assembly in the shop and during installation on the jobsite. Perfect for construction projects that require repetitive wiring installs.

Choose from a variety of the 4^{11/16}" and 4" square boxes for a wide variety of applications. Integrated STAB-iT® connectors for terminating MC cable reduce installation cost. Grand Slam boxes offer a clean solution for home run circuits. Adjustable, hinged and stud-mount mud rings provide installation versatility.



STAB-IT CONNECTORS

- Install 3 TIMES FASTER
- Designed for quick installation of MC, AC, and HCF Cable
- 14/2 to 10/3 for most cable types
- UL listed for use without a plastic anti-short bushing (except for AC Cable)



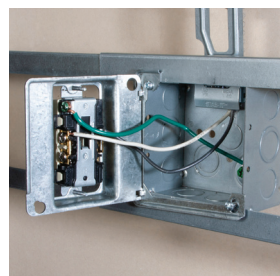
BOXES

- Available with built-in cable clamps
- With built-in box mounting brackets for steel or wood stud mounting
- Some boxes include far-side support
- Boxes include ground wires



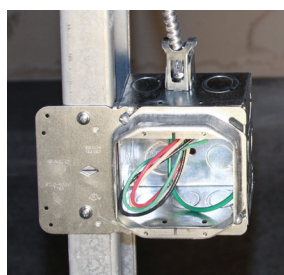
ADJUSTABLE MUD RINGS

- Adjustable after installation of wall coverings
- 1, 2, 3 Gang and round with 1/2" to 1-3/4" Adjustability
- Ring adjusting screws are covered, protecting wires within the box



HINGED MUD RINGS

- Hinged mud rings for easy wiring access
- Available for 4" Square Boxes in 1 and 2-Gangs
- 5/8" Depth
- Can be used with Box Mounting Brackets



STUD MOUNT MUD RINGS

- Available for 4" Square Boxes
- For use with power or low voltage
- 1 and 2 Gangs



GRAND SLAM BOXES

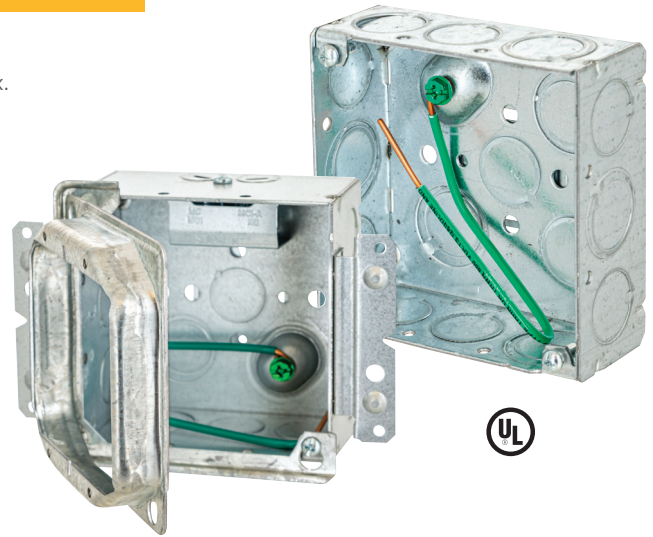
- Easy homerun wiring
- Includes STAB-IT Connectors
- Includes grounding bars
- With or without concentric knock-outs

4" SQUARE BOXES

Regular or STAB-IT® boxes

These popular boxes are available with our unique connectors built into the box. Terminate MC cable in one third the time of other clamps. Models are available with connectors for two or four cables. Available mounting brackets and cable management offer the first means of support.

- 2-cable STAB-IT connectors install 3 times faster than traditional connectors
- Designed for quick installation of flex, MC, MCI, MCI-A, MC-PCS, AC, and HCF Cable
- STAB-IT boxes with CM offer first means of support
- 232MSCM & 232MS includes far-side support on back
- Includes ground wires, box mounting brackets and cable clamps
- Easier installation for labor savings



Boxes - 4" Square, 2-1/8" deep. **Construction -** Welded steel with raised grounds. **Capacity -** 30.3 in.³

Catalog No.	Description	Side Knockouts			Bottom Knockouts	
		Concentric	TKO	Cable Pry-outs	Concentric	TKO
232	Standard	(8) 1/2"	(4) 1/2" - 3/4"	—	(2) 1/2"	(2) 1/2" - 3/4"
232SLD	Standard, 8" #12 solid ground pigtail	(10) 1/2"	(4) 1/2" - 3/4"	—	(2) 1/2"	(2) 1/2" - 3/4"
232SM	Standard 10" #12 stranded ground pigtail	(8) 1/2"	(4) 1/2" - 3/4"	—	(2) 1/2"	(2) 1/2" - 3/4"
232S*	(1) STAB-iT Connector, w/Pigtail	(6) 1/2"	(3) 1/2" - 3/4"	2	(1) 1/2"	(1) 1/2" - 3/4"
232MS	(1) STAB-iT Connector, M brkts., w/Pigtail & UBS	(6) 1/2"	(3) 1/2" - 3/4"	2	(1) 1/2"	(1) 1/2" - 3/4"
232MSHF	(1) STAB-iT Connector, M brkts., w/Pigtail & heavy duty UBS	(6) 1/2"	(3) 1/2" - 3/4"	2	(1) 1/2"	(1) 1/2" - 3/4"
232MSCMHF	(1) STAB-iT Connector, M brkts., w/Pigtail, Cable Mgmt. Clip & heavy duty UBS	(6) 1/2"	(3) 1/2" - 3/4"	2	(1) 1/2"	(1) 1/2" - 3/4"
232SCM*	(1) STAB-iT Connector, w/Pigtail, Cable Mgmt. Clip & UBS	(6) 1/2"	(3) 1/2" - 3/4"	2	(1) 1/2"	(1) 1/2" - 3/4"
232MSCM	(1) STAB-iT Connector, M brkts., w/Pigtail, Cable Mgmt. Clip & UBS	(6) 1/2"	(3) 1/2" - 3/4"	2	(1) 1/2"	(1) 1/2" - 3/4"
244MS	(2) STAB-iT Connectors on top, M brkts., w/Pigtail	(6) 1/2"	(3) 1/2" - 3/4"	2	(1) 1/2"	(1) 1/2" - 3/4"
244MSCM	(2) STAB-iT Connectors on top, M brkts., w/Pigtail, Cable Mgmt. Clips & UBS	(6) 1/2"	(3) 1/2" - 3/4"	4	(1) 1/2"	(1) 1/2" - 3/4"
244MSCMHF	(2) STAB-iT Connectors on top, M brkts., w/Pigtail, Cable Mgmt. Clips & heavy duty UBS	(6) 1/2"	(3) 1/2" - 3/4"	4	(1) 1/2"	(1) 1/2" - 3/4"
244MSHF	(2) STAB-iT Connectors on top, M brkts., w/Pigtail & heavy duty UBS	(6) 1/2"	(3) 1/2" - 3/4"	4	(1) 1/2"	(1) 1/2" - 3/4"
244S	(2) STAB-iT Connectors on top, w/Pigtail	(6) 1/2"	(3) 1/2" - 3/4"	4	(1) 1/2"	(1) 1/2" - 3/4"
244SCM	(2) STAB-iT Connectors on top, w/Pigtail, Cable Mgmt. Clips	(6) 1/2"	(3) 1/2" - 3/4"	4	(1) 1/2"	(1) 1/2" - 3/4"
248HS	(2) STAB-iT Connectors, H brkt., w/Pigtail, UBS	(4) 1/2"	(1) 1/2" - 3/4"	4	(1) 1/2"	—
248MS	(2) STAB-iT Connectors, M brkts., w/Pigtail, UBS	(4) 1/2"	(1) 1/2" - 3/4"	4	(1) 1/2"	—
248MSHF	(2) STAB-iT Connectors, M brkts., w/Pigtail, heavy duty UBS	(4) 1/2"	(1) 1/2" - 3/4"	4	(1) 1/2"	—
248S	(2) STAB-iT Connectors, w/Pigtail	(4) 1/2"	(1) 1/2" - 3/4"	4	(1) 1/2"	—

1 STAB-iT connector can accommodate up to 2 cables. 2 STAB-iT connectors can accommodate up to 4 cables.

* cULus Listed. All other models are UL Listed

Boxes - 4" Square, 1-1/2" deep. **Capacity -** 21 in.³ Use with standard cable connectors

Catalog No.	Description	Side Knockouts		Back Knockouts	
		Concentric	TKO	Concentric	TKO
189F	Welded steel, raised ground, 8" solid #12 ground pigtail	(8) 1/2"	(4) 1/2" - 3/4"	(2) 1/2"	(2) 1/2" - 3/4"
189SM	Welded steel, raised ground, 10" solid #12 ground pigtail	(8) 1/2"	(4) 1/2" - 3/4"	(2) 1/2"	(2) 1/2" - 3/4"
196	Welded steel, long side mounting brackets	(8) 1/2"	(4) 1/2" - 3/4"	(3) 1/2"	(2) 1/2" - 3/4"

*cULus

4¹¹/₁₆" SQUARE BOXES

Featuring STAB-IT® connectors

Integrated into the box, our exclusive connectors are field proven to terminate MC cable up to 3 times faster than traditional cable clamps. It's easy: remove the pry-out, prep the cable, insert cable, done! These welded large boxes provide more room for wiring and include connectors for three or six cables, plus a knockout on the same side as the connectors. Available mounting brackets and cable management offer the first means of support.

- 3-cable STAB-IT® connectors install 3 times faster than traditional connectors
- Designed for quick installation of flex, MC, MCI, MCI-A, MC-PCS, AC, and HCF Cable
- All H & M SKU's have a far-side support and SKU's ending in HF have a heavy duty universal bracket support
- Includes ground wires, box mounting brackets and cable clamps
- Easier installation for labor savings



Boxes - 4-11/16" Square, 2-1/8" deep. **Construction -** Welded steel with raised grounds. **Capacity -** 42 in.³

Catalog No.	Description	Side Knockouts		Bottom Knockouts	
		TKO	Cable Pry-outs	Concentric	TKO
257	Standard	(12) 1/2" - 3/4"	—	(1) 1/2"	(3) 1/2" - 3/4"
252S*	(1) STAB-iT II Connector, w/Pigtail	(9) 1/2" - 3/4" (1) 3/4" - 1"	3	(1) 1/2"	(1) 1/2" - 3/4"
252SCM*	(1) STAB-iT II Connector, w/Pigtail, Cable Mgmt. Clip	(9) 1/2" - 3/4" (1) 3/4" - 1"	3	(1) 1/2"	(1) 1/2" - 3/4"
252MS*	(1) STAB-iT II Connector, M brkts., w/Pigtail & UBS	(9) 1/2" - 3/4" (1) 3/4" - 1"	3	(1) 1/2"	(1) 1/2" - 3/4"
252MSCM*	(1) STAB-iT II Connector, M brkts., w/Pigtail & Cable Mgmt. Clip & UBS	(9) 1/2" - 3/4" (1) 3/4" - 1"	3	(1) 1/2"	(1) 1/2" - 3/4"
252MSCMHF	(1) STAB-iT II Connector, M bracket, w/Pigtail, Cable Mgmt. Clip & heavy duty UBS	(9) 1/2" - 3/4" (1) 3/4" - 1"	3	(1) 1/2"	(1) 1/2" - 3/4"
252MSHF	(1) STAB-iT II Connector, M brkts., w/Pigtail, & heavy duty UBS	(9) 1/2" - 3/4" (1) 3/4" - 1"	3	(1) 1/2"	(1) 1/2" - 3/4"
254S*	(2) STAB-iT II Connectors, w/Pigtail	(8) 1/2" - 3/4"	6	(1) 1/2"	(1) 1/2" - 3/4"
254SCM*	(2) STAB-iT II Connectors, w/Pigtail & Cable Mgmt. Clips	(8) 1/2" - 3/4"	6	(1) 1/2"	(1) 1/2" - 3/4"
987	Heavy Duty Universal Box Support (UBS)	—	—	—	—

*cULus Listed. All other models are UL Listed

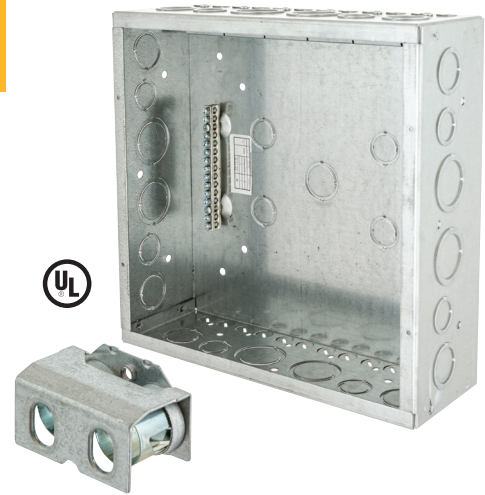


GRAND SLAM® JUNCTION BOXES

Large capacity home run boxes

Terminate home runs in commercial applications with the Grand Slam box. It offers both flexibility and space. Features built-in STAB-iT® connectors for jobsite labor savings and includes ground bar.

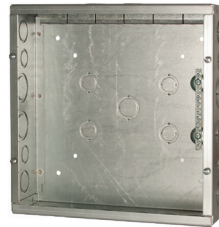
- With STAB-iT® clamps, has been tested at over 3X faster than traditional connectors
- Surface mount cover and ground bar included
- Two grounds for installation flexibility
- Available with concentric knockouts on side and back
- UL Listed



GRAND SLAM® Junction Boxes

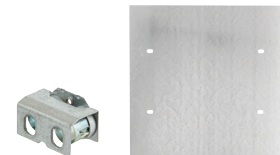
Box, surface covers and ground bar included.

Catalog No.	STAB-iT® Clamps	Concentric Knockouts	Capacity (In. ³)	Dimensions
SC080803STRC	(4) 14/2 to 10/3, up to 8 cables	(12) 1/2" & 3/4", (5) 3/4" & 1"	179	8" x 8" x 3"
SC080803NKSTRC	(4) 14/2 to 10/3, up to 8 cables	—	179	8" x 8" x 3"
SC121204STRC	(6) 14/2 to 10/3, up to 12 cables	(12) 1/2" & 3/4", (9) 3/4" & 1", (8) 1" & 1-1/4"	546	12" x 12" x 4"
SC121204NKSTRC	(6) 14/2 to 10/3, up to 12 cables	—	546	12" x 12" x 4"



GRAND SLAM® Junction Box Accessories

Catalog No.	Description	For Use With	Dimensions
SCF0808RC SCF1212RC	Flush style cover	8" x 8" boxes 12" x 12" boxes	10" x 10" 14" x 14"
989ST	STAB-iT Connector (accepts 2 cables)	All GRAND SLAM boxes	1.032" x 1.75" x 0.983"

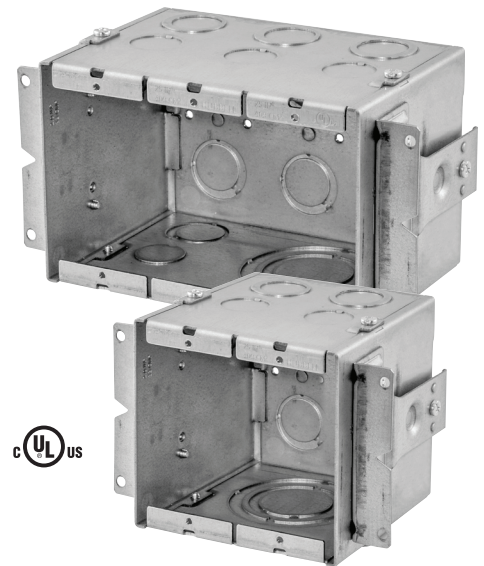


AV WALL BOXES

Gangable boxes

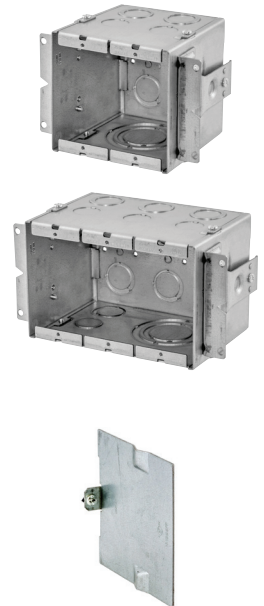
Deliver data, AV, and power side-by-side with these oversized in-wall boxes. Designed to install independently or ganged together for multiple devices. Perfect for Cat6 and 6A fiber optic cables that require a larger bend radius.

- 4" depth accepts any device
- Knockouts from 1/2" up to 2"
- Accepts low voltage partition
- NEMA spaced device mounting, accepts industry standard wallplates
- Adjustable stud mounting brackets and far side support
- Suitable for masonry application



Gangable AV Wall Boxes

Catalog No.	Description	Knockouts		
		Top	Bottom	Back
985	2-Gang, 2 in. KO, 54 in ³ capacity, 4.21" x 4.06" x 4"	(2) 1/2" (2) 1/2" - 3/4" TKO	(1) 1", 1-1/4", 1-1/2", 2"	(2) 1/2" - 3/4"
986	3-Gang, 2 in. KO, 79 in ³ capacity, 4.21" x 5.87" x 4"	(3) 1/2" (3) 1/2" - 3/4" TKO	(1) 1/2" (1) 1/2" - 3/4" TKO (1) 1", 1-1/4", 1-1/2", 2"	(3) 1/2" - 3/4"
987	4-Gang, 2 in. KO, 104 in ³ capacity, 4.21" x 7.69" x 4"	(4) 1/2" (4) 1/2" - 3/4" TKO	(1) 1/2" (1) 1/2" - 3/4" TKO (2) 1", 1-1/4", 1-1/2", 2"	(4) 1/2" - 3/4"
988	6-Gang, 2 in. KO, 154 in ³ capacity, 4.21" x 11.31" x 4"	(6) 1/2" (6) 1/2" - 3/4" TKO	(1) 1/2" (1) 1/2" - 3/4" TKO (2) 1", 1-1/4", 1-1/2", 2"	(6) 1/2" - 3/4"



Low Voltage AV Wallbox Partition

Catalog No.	For use with	Type
989	985, 986	Low voltage partition

TRANSITION BOX

RACO's Dugout box offers the quickest and easiest way to transition from flexible armored cable to conduit before entering the circuit panel. Four concentric knockouts are provided for either 3/4" or 1" conduit out to the circuit panel. The Dugout box offers more labor savings and installation flexibility than any other transition box on the market.

- Designed for quick installation of flex, MC, MCI, MCI-A, AC and HCF cable
- STAB-iT clamp has been tested at over 3X's faster than traditional MC connectors
- Room to add up to six additional STAB-iT connectors
- Accepts cable sizes from 14/2 up to 10/3 for most cable types



Dugout Transition Box

Catalog No.	Description	Dimensions	Knockouts	Built-in STAB-iT Clamps
SC082006STRC	8" x 20" Transition Box (cover included)	8" x 20" x 6"	(4) 3/4" & 1" Concentric	21 (14/2 to 10/3) Up to 42 cables

LARGE CAPACITY WALL BOXES

One, two or three gang boxes

Oversized two or three gang boxes and mud rings are perfect for AV, data and power applications. Extra-large knockouts for pulling pre-terminated cables.

- Designed to deliver power and low voltage in the same box
- Use standard mud rings and wallplates
- Two inch knockout feed-thru
- 3 ¼ Inch depth accommodates large cables and bend radii



2-Gang Large Capacity Wall Boxes

Boxes are 4-11/16" square, 3-1/4" deep. The boxes have 66.7 in³. capacity. Use with industry standard 4-11/16" square mud rings for 1- or 2-gang applications.

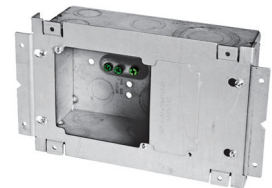
Catalog No.	Description	Side Knockouts		Back Knockouts
		Concentric	TKO	TKO
260	Standard	(2) 1/2"	(2) 3/4" - 1" (2) 1" - 1-1/4"	(2) 3/4" - 1" (2) 1-1/2"
260H	With mounting brackets	(2) 1/2"	(2) 3/4" - 1" (2) 1" - 1-1/4"	(2) 3/4" - 1" (2) 1-1/2"



3-Gang Large Capacity Wall Boxes

Boxes are 4-11/16"H, 7-3/4"W, 3-1/4"D. The boxes have 113.3 in³. capacity. Use with industry standard 4" square mud rings for 1- or 2-gang applications.

Catalog No.	Description	Side Knockouts		Back Knockouts
		Concentric	TKO	TKO
263	Square 2- or 3-gang wall box	(2) 1/2"	(4) 1/2" - 3/4" (4) 3/4" - 1" (2) 1" - 1-1/4"	(2) 1/2" - 3/4" (2) 3/4" - 1" (2) 1" - 1-1/4"



Mud Rings

Catalog No.	Description	For use with	Height	Capacity (In. ³)
818	2-gang mud rings	260	5/8"	7.3
840			3/4"	8.8
819			1"	12.0
820			1-1/4"	15.0
792	3-gang mud rings	263	1/2"	10.1
793			5/8"	12.3
794			1-1/4"	24.3



Low Voltage Partition

Catalog No.	Type	For use with	Mud Ring Depth
981	Solid divider	260 and 263	5/8", 3/4" & 1-1/4"



4-11/16" Square 2 Device and Tile Cover

For Life Safety Appliance, Emergency Exit Signs and Speaker Strobe Applications

Catalog No.	Description	Cubic In. Cap. - (CM ³)
911-16	Raised 5/8", painted red	8.3 (136.0)



RACO® BLOCK-LOC® MASONRY BOXES



Application

For power and data outlets in masonry block walls.

Features

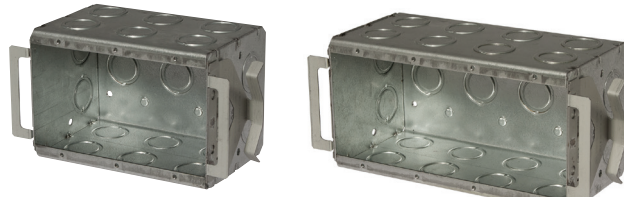
- Available in 3-1/2" deep, 1 through 4 gang welded, and gangable masonry boxes
- Available in 4" sq. 2" deep 1 and 2 gang tile covers
- Available in 4-11/16" sq. 2" deep 1 and single gang tile covers (899B)
- Integral brackets securely hold power and data outlets to concrete block from front and back in masonry block walls, even in irregular cut openings
- Made from durable, galvanized steel
- Quick and accurate positioning
- Break off front tabs
- UL listed
- Patent Pending
- Made in North America



689B

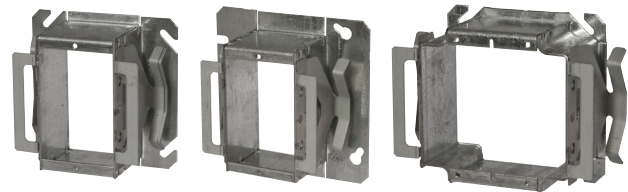
695B

696B



697B

698B



786B

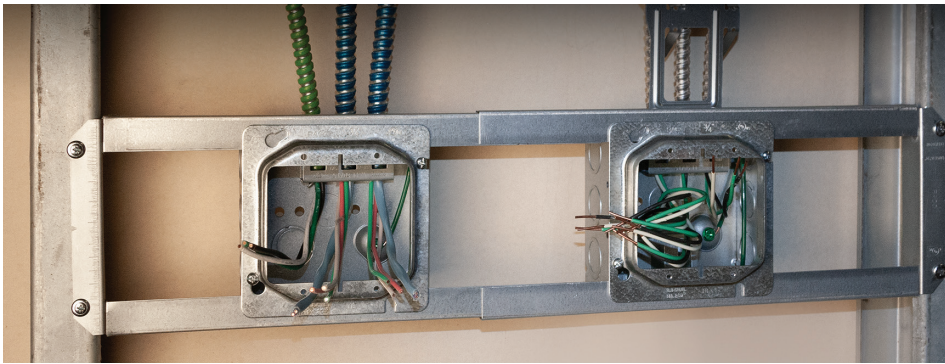
899B

796B

Self-positioning masonry boxes and tile covers designed to lock into position and hold during the construction process.

Catalog No.	Description	Cu. In. Capacity	Ctn. Qty.	Knockouts		
				Sides	Ends	Bottom
689B	3-1/2" Deep Single-Gang, Gangable	22.5	18	4 TKO	2 TKO	2 TKO
695B	3-1/2" Deep Single-Gang, Welded	22.5	18	4 Conc.	4 Conc.	2 Conc.
696B	3-1/2" Deep Two-Gang, Welded	45.0	12	4 Conc.	8 Conc.	4 Conc.
697B	3-1/2" Deep Three-Gang, Welded	67.3	12	4 Conc.	12 Conc.	3 Conc.
698B	3-1/2" Deep Four-Gang, Welded	89.8	6	4 Conc.	16 Conc.	4 Conc.
786B	4" Sq. Single-Gang Tile Cover, 2" Deep	14.5	25	—	—	—
796B	4" Sq. Two-Gang Tile Cover, 2" Deep	20.5	20	—	—	—
899B	4-11/16" Sq. Single-Gang Tile Cover, 2" Deep (Not UL Listed)	16.0	12	—	—	—

STAB-iT® ASSEMBLIES FOR PRE-FAB



Save time and effort!

Application

Save labor costs on any job with RACO Pre-Fab assemblies. All components come pre-assembled, ready to install right out of the box. Electrical boxes, mounting brackets, cable management and mud rings. Ensure quality while reducing material and labor costs. Even reduce jobsite packaging waste.

These Assemblies feature 4-11/16" boxes with integrated STAB-iT® II connectors for advanced fast, secure installation of MC cables. Contractor-proven to install MC in just 1/3 the time! These boxes also include built-in cable management clip and 8" solid #12 pigtail. Models with a second box for power and data applications include a standard 4-11/16" box with additional knockouts.

Features

- All components preassembled, ready to install
- Open Center Brackets pre-set for either 16" or 24" studs
- STAB-iT II Boxes
 - STAB-iT II connector holds 3 cables
 - Built-in cable management clips provides first means of support
- Adjustable Mud Rings
 - ½" to 1-3/8" adjustability range
 - All screws inside the ring to eliminate damage from router
 - Adjustment screws visible and accessible after the device is installed
- For use on wood or metal studs
- Designed and assembled in USA
- UL Listed

Components

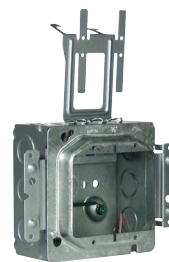
- 252MSCM: 4-11/16" Sq., 2-1/8" deep, (1) STAB-iT II connector, M Bracket, Pigtail and Cable Management Clip
- 252SCM: 4-11/16" Sq., 2-1/8" deep, (1) STAB-iT II connector, | Pigtail and Cable Management Clip
- 265: 4-11/16" Sq., 2-1/8" deep, Raised Ground
- 9020R: Adjustable Open Center Bracket - 16" to 24"
- 838: 1G Fixed Mud Ring ¾"
- 840: 2G Fixed Mud Ring ¾"
- 868AMR: 1G Adjustable Mud Ring
- 868AMR: 2G Adjustable Mud Ring



AW1.1



AW1.9



AW4.1



AW4.9



Catalog No.	Description	Cu. In. Cap.	Ctn. Qty.	Bar Code
4-11/16" SQUARE BOX/PRE-FAB ASSEMBLIES				
AW1.1	252MSCM + 838 / 1G - Mud Ring, Raised 3/4" / M Bracket	42.0	12	—
AW1.9	252MSCM + 868AMR / 1G -Adjustable Mud Ring / M Bracket	42.0	10	—
AW4.1	252MSCM + 840 / 2G - Mud Ring, Raised 3/4" / M Bracket	42.0	12	—
AW4.9	252MSCM + 869AMR / 2G - Adjustable Mud Ring / M Bracket	42.0	10	—



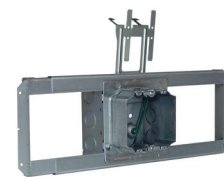
AW2.1.16



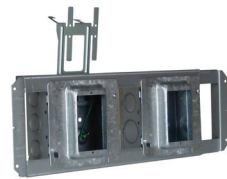
AW2.9.16



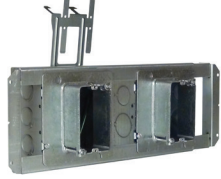
AW5.1.16



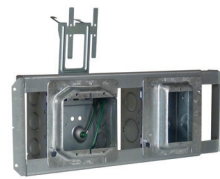
AW5.9.16



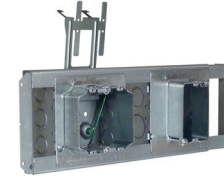
AW3.1.16



AW3.9.16



AW6.1.16



AW6.9.16



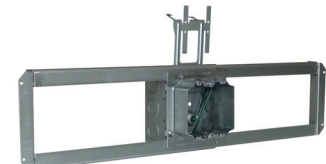
AW2.1.24



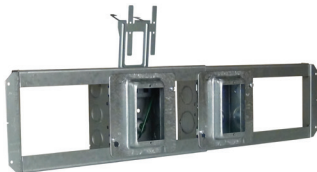
AW2.9.24



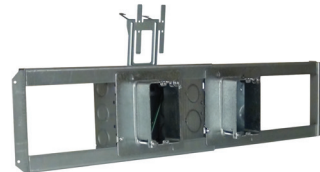
AW5.1.24



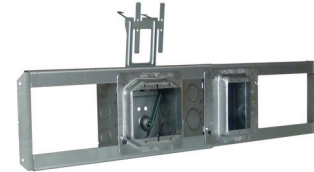
AW5.9.24



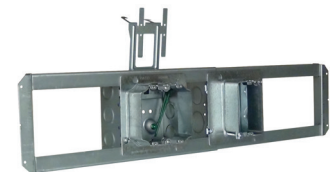
AW3.1.24



AW3.9.24



AW6.1.24

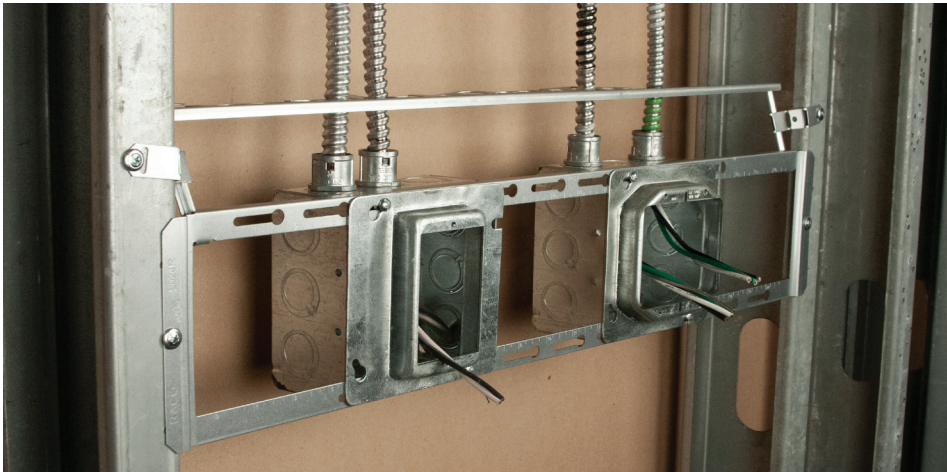


AW6.9.24



Catalog No.	Description	Cu. In. Cap.	Ctn. Qty.	Bar Code
4-11/16" SQUARE BOX/PRE-FAB ASSEMBLIES				
AW2.1.16	9020R + 252SCM + 838 / 1G - Mud Ring, Raised 3/4" / 16" Studs	42.0	6	—
AW2.9.16	9020R + 252SCM + 868AMR / 1G - Adjustable Mud Ring / 16" Studs	42.0	6	—
AW5.1.16	9020R + 252SCM + 840 / 2G - Mud Ring, Raised 3/4" / 16" Studs	42.0	6	—
AW5.9.16	9020R + 252SCM + 869AMR / 2G - Adjustable Mud Ring / 16" Studs	42.0	6	—
AW3.1.16	9020R + 252SCM + 265 + (2) 838 / 1G - Mud Ring, Raised 3/4" / 16" Studs	42.0	6	—
AW3.9.16	9020R + 252SCM + 265 + (2) 868AMR / 1G - Adjustable Mud Ring / 16" Studs	42.0	6	—
AW6.1.16	9020R + (252SCM + 840) / 2G - Mud Ring, Raised 3/4" + (265 + 838) / 1G - Mud Ring, Raised 3/4" / 16" Studs	42.0	6	—
AW6.9.16	9020R + (252SCM + 869AMR) / 2G - Adj. Mud Ring + (265 + 868AMR) / 1G - Adj. Mud Ring / 16" Studs	42.0	6	—
AW2.1.24	9020R + 252SCM + 838 / 1G - Mud Ring, Raised 3/4" / 24" Studs	42.0	6	—
AW2.9.24	9020R + 252SCM + 868AMR / 1G - Adjustable Mud Ring / 24" Studs	42.0	6	—
AW5.1.24	9020R + 252SCM + 840 / 2G - Mud Ring, Raised 3/4" / 24" Studs	42.0	6	—
AW5.9.24	9020R + 252SCM + 869AMR / 2G - Adjustable Mud Ring / 24" Studs	42.0	6	—
AW3.1.24	9020R + 252SCM + 265 + (2) 838 / 1G - Mud Ring, Raised 3/4" / 24" Studs	42.0	6	—
AW3.9.24	9020R + 252SCM + 265 + (2) 868AMR / 1G - Adj. Mud Ring / 24" Studs	42.0	6	—
AW6.1.24	9020R + (252SCM + 840) / 2G - Mud Ring, Raised 3/4" + (265 + 838) / 1G - Mud Ring, Raised 3/4" / 24" Studs	42.0	6	—
AW6.9.24	9020R + (252SCM + 869AMR) / 2G - Adj. Mud Ring + (265 + 868AMR) / 1G - Adj. Mud Ring / 24" Studs	42.0	6	—

BRACES AND BRACKETS



9004R - 9006R, 9013R - 9015R

Braces and extenders are used for metal or wood stud box positioning.

- Available for 1-1/2" or 2-1/8" deep boxes
- Location dimples on face of bar allows for exact positioning
- Dimple feature provides quick start of screws, and reinforcement to prevent box mounting screws from stripping out when box is mounted
- Design allows ground screw to clear when box is mounted
- Boxes attach easily with self-tapping screws

9001, 9002

Position electrical boxes, plaster rings and low voltage devices between studs.

- Fold-back stabilizer leg prevents bracket from being pushed back in wall cavity during drywall installation
- Designed for 2-1/2" or 3-1/2" studs
- Mounts 4" or 4-11/16" sq. boxes
- Provides maximum work area inside box
- Mounts to within 1/16" of drywall every time

9016R, 9024R, 9020R

Easy position and adjust electrical boxes and plaster rings between studs.

- Accepts both 4" and 4-11/16" square boxes and plaster rings
- Opening gives installer flexibility of box position between studs
- Features built-in first means of support for securing and supporting flex and armored cable
- Available for both 16" and 24" stud spacing
- Built-in ruler to aid in alignment of electrical box

Non-adjustable Box Mounting Brace

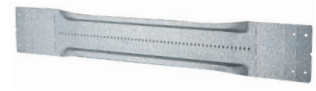


Catalog No.	For use with	Type	Box Mounting
9004R	4-11/16" and 4" boxes, cULus	For 1-1/2" or 2-1/8" deep box	16"
9006R		For 1-1/2" or 2-1/8" deep box	24"



Adjustable Box Mounting Brace

Catalog No.	For use with	Type	Box Mounting
9013R	4-11/16" and 4" boxes, cULus	For 1-1/2" or 2-1/8" deep box	10-3/8" to 18"
9015R		For 1-1/2" or 2-1/8" deep box	15" to 26"



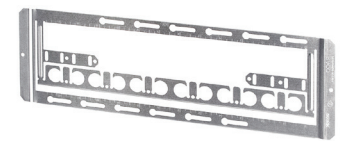
Fixed Position Box Mounting Brackets

Catalog No.	For use with	Type	Box Mounting
9001	4-11/16" and 4" boxes, cULus	For 3 boxes	16" O.C.
9002		For 4 boxes	24" O.C.



Open Center Box Support Brackets

Catalog No.	For use with	Type	Box Mounting
9016R	4-11/16" and 4" boxes, cULus	Open wall adjustable box bracket	16"
9024R		Open wall adjustable box bracket	24"
9020R		Open wall adjustable box bracket	16" to 24"



BOX AND CABLE SUPPORTS

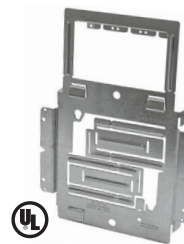
SBRNRRAC

Bracket support for an electrical box mounted to a stud.

- Accepts up to 3 MC cables (12-2MC to 10-4MC)
- Mounts 4" sq. box left or right of stud
- Supports wood and metal stud depths: 2-1/2", 3-1/2", 3-5/8", 5-1/2" or 6" studs

Single Box Mounting Bracket with Cable Support

Catalog No.	For use with	Mounting
SBRNRRAC	4" or 4-11/16" sq. box	Bracket support



SP2RAC

Spans 24" between two studs.

- Dual-point mounting, right or left of stud
- Mounts 4" or 4-11/16" sq. box to 2-1/2", 3-1/2" or 6" studs

Between Stud Spanner Bar

Catalog No.	For use with	Mounting
SP2RAC	SBRNRRAC, or SICRAC	Metal or wood Stud



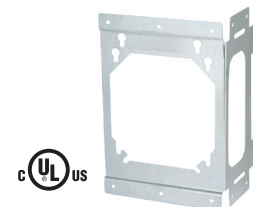
9018

Supports electrical box when mounted to a stud.

- Dual-point mounting, right or left of stud
- Mounts 4" or 4-11/16" sq. box to 2-1/2", 3-1/2" or 6" studs

Two-point Box Mounting Bracket

Catalog No.	For use with	Mounting
9018	4" or 4-11/16" sq. box	Stud



980

Supports electrical box when mounted to a stud.

- Allows any 4" or 4-11/16" square metal box to be affixed to a metal stud quickly and easily

BOX-LOC® Metal Stud Clip

Catalog No.	For use with	Mounting
980	4" or 4-11/16" sq. box	Spring Steel Bracket



978

Supports electrical box when mounted to a stud.

- Allows any 4" or 4-11/16" square metal box to be affixed to a metal stud quickly and easily

Far Side Support

Catalog No.	For use with	Mounting
978	4" or 4-11/16" sq. box	Box Support



BOX AND CABLE SUPPORTS

9009, 9010

Bracket support for an electrical box from floor or concrete forms.

- Fold-back stabilizer leg prevents bracket from being pushed back in wall cavity during drywall installation
- Designed for mounting square boxes 12" or 18" above floor
- Mounts to metal or wood plate
- Box can be mounted on support without drywall ring to save time by providing maximum working area in box
- When mounted, raised cover is brought to within 1/16" of drywall every time

Floor Mounted Box Support

Catalog No.	For use with	Height	Mounting
9009	4" or 4-11/16" sq. box	12"	Box support
9010		18"	



KS1RAC

Designed to be used in conjunction with SBRNRRAC to adjust a box assembly at various heights from floor 7" to 18" at 1 inch increments.

- SBRNRRAC single box support brackets lock into KS1RAC using built-in locator tabs
- Wrap under lip design and securing lock tab allows for KS1RAC to be positioned under stud for hands free installation of bracket/box assembly
- KS1RAC wall assembly can be easily located behind closed wall with built-in locator tab that can be seen once drywall is in place
- Heavy 20 gauge .038" gauge pre-galvanized steel construction for secure and rigid support of boxes in wall cavity

Floor Mount Adjustable Kick Stand

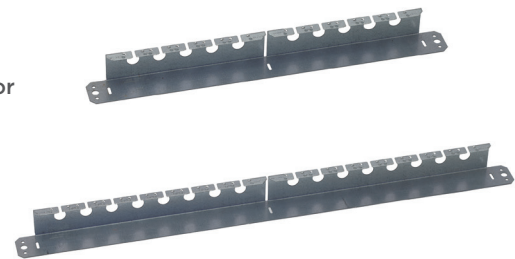
Catalog No.	For use with	Height	Mounting
KS1RAC	Box Assembly	16"	Floor



CS1RAC, CS2RAC

Designed to organize runs of MC or BX cables with spacing for NEC requirements that eliminate the need for derating.

- Mounts wall/surface, hung by 1/4" threaded rod, top of wall mounted or deck mounted
- Easy to use integrated locking tabs hold cable securely in place - snap cable in, no additional hardware required to hold cables in place
- Heavy 20 gauge .038" gauge pre-galvanized steel construction for secure and rigid support of boxes in wall cavity



MC/BX Cable Holder

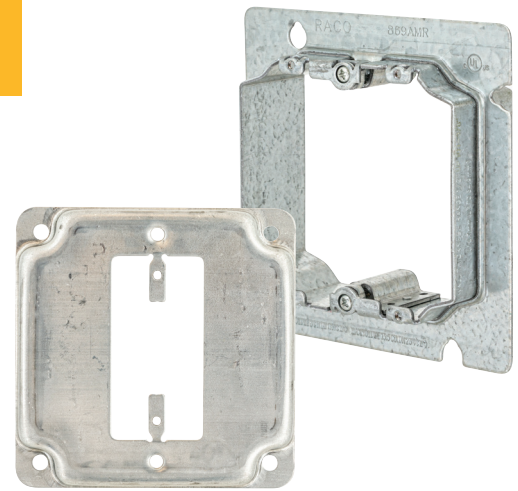
Catalog No.	For use with	Height	Mounting
CS1RAC	MC or BX cable runs	16", 10 cable positions	Multiple applications
CS2RAC		24", 24 cable positions	

4" & 4 1/16" BOX ACCESSORIES

Mud rings, covers, supports

Steel adjustable mud rings provide flexibility after installation to match the drywall depth. Hinged mud rings allow devices to be installed during pre-assembly, then swing out of the way for final wiring on site. Protector plates can be attached during prefab to protect devices during drywall install, then removed during trim out.

- 1 & 2-Gang adjustable mud rings
- Standard 1 & 2-gang mud rings
- Adjustable open box mounting brackets
- Floor mounted box support includes fold back stabilizer prevents bracket from being pushed back in wall cavity during drywall installation



Mud Rings

Catalog No.	For use with	Type	Raised Height	Capacity (In. ³)	Listing		
868AMR 869AMR	4-11/16" boxes	1-Gang, adjustable 2-Gang, adjustable	1/2" to 1-3/8"	4 to 9-1/2' 8 TO 15.5"	UL Listed		
843 842		1-Gang	5/8" 1-1/4"	4-1/2" 9-1/2"	cULus		
841 818 840 819 820		2-Gang	1/2" 5/8" 3/4" 1" 1-1/4"	5.5 7.3 8.8 12.0 15.0	cULus		
768AMR 769AMR		4" boxes	1-Gang, adjustable 2-Gang, adjustable	1/2" to 1-3/8"	4 to 9-1/2' 8 to 15.5"	UL Listed	
756AMR			Adj. round for 4" Sq. Bx.	1/2" to 1-3/8"	4.4 to 10.5	UL Listed	
768 768B 768H 775			1-Gang 1-Gang, stud mount 1-Gang, hinged 1-Gang	5/8" 5/8" 5/8" 1-1/4"	4.5 4.5 5.5 9.5	UL Listed UL Listed UL Listed cULus	
769 769B 769H 781			2-Gang 2-Gang, stud mount 2-Gang, hinged 2-Gang	5/8" 5/8" 5/8" 1-1/4"	7.3 7.3 8.3 15	cULus UL Listed UL Listed cULus	
822AMR			942 box	3-Gang, adjustable	1/2" to 1-3/8"	11.0 to 20.0	cULus



Square Metallic Covers for Exposed Work

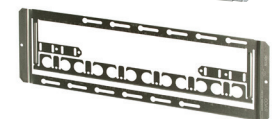
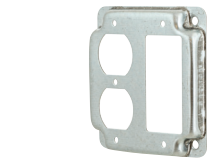
1 Decorator	1 Duplex	2 Decorator	2 Duplex	1 Duplex, 1 Decorator	For use with
808C	902C	809C	907C	915C	4" boxes, UL Listed

Open Center Box Support Brackets

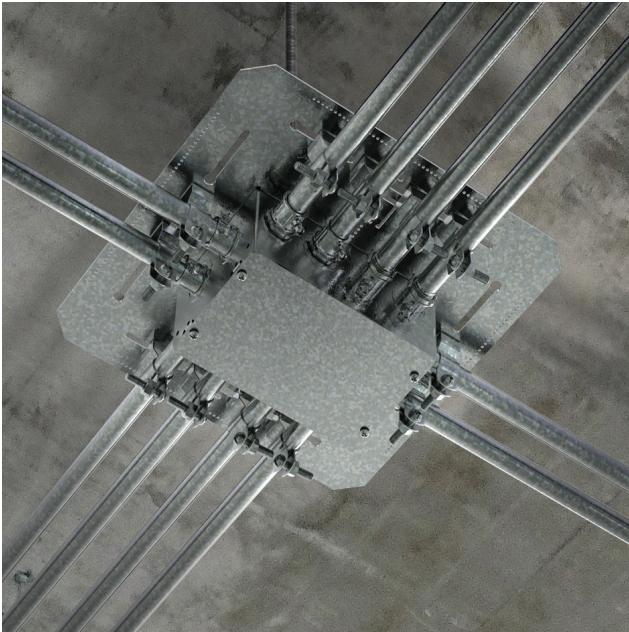
Catalog No.	For use with	Type	Box Mounting
9016R	4-11/16" and 4" boxes, cULus	Open wall adjustable box bracket	16"
9024R		Open wall adjustable box bracket	24"
9020R		Open wall adjustable box bracket	16" to 24"

Plates

1-Gang	2-Gang	Description	For use with	Height
701F 701R	702F 702R	Reuseable metallic mud ring cable protector plate	4-11/16" and 4" boxes	Flush 3/4"
999	—	Metallic flush-fit devices levelling plate		—



BOX SUPPORTS - CEILING



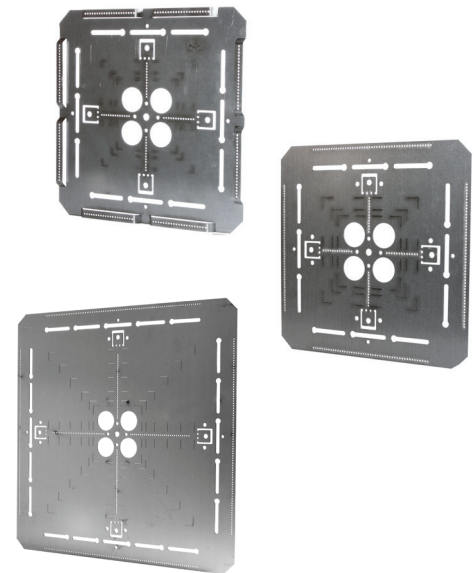
9112R, 9112RL, 9118R

Box support and conduit positioning plates offer flexible options for quickly hanging electrical boxes in commercial or industrial overhead applications. Also provides a means of positioning for conduit exiting the box. Create a clean, organized and strong installation that saves time and materials compared to traditional suspended procedures.

- Mount horizontally or vertically from a single 3/8" threaded rod
- Bendable tabs secure plate in vertical installation
- Multiple markings for easier box alignment
- Pre-punched holes for rear raceway access
- Holes and slots provide limitless options for clamp or strap installation
- Lanced feature on 9112RL for easier one-hole strap installation
- Constructed of 16 gauge galvanized steel

Square Box and Conduit Hangers

Catalog No.	For use with	Size	Mounting
9112R 9112RL	Accommodates multiple 4"sq. or larger boxes, and up to 12" x 12" boxes	12" x 12"	Ceiling
9118R	Accommodates multiple 4"sq. or larger boxes, and up to 12" x 12" boxes (includes Grand Slam junction box)	18" x 18"	



CONTACT US

We want to hear from you!

✉ racocustomerservice@hep.hubbell.com

☎ (800) 992-7030



www.hubbell.com/raco

Hubbell RACO • Hubbell Incorporated (Delaware) • 3902 West Sample St. • South Bend, IN 46619 • Phone (574) 234-7151

Printed in U.S.A. Specifications subject to change without notice.

® is a registered trademark of Hubbell Incorporated.

RA-464_BRO_PREFAB 11/21