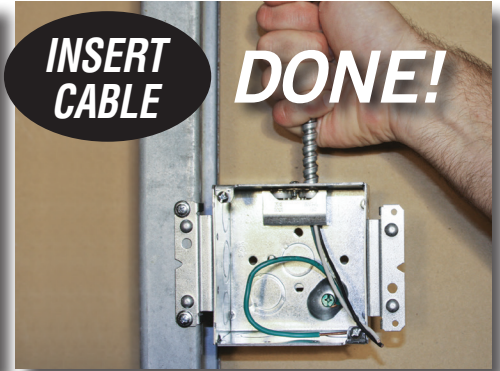
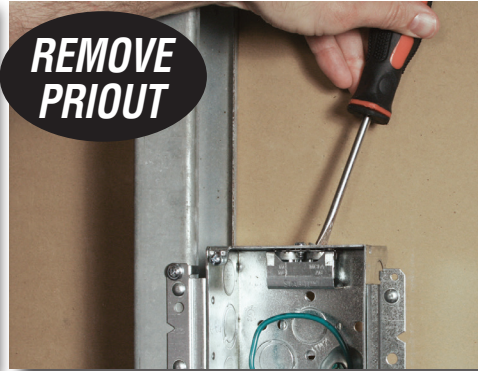
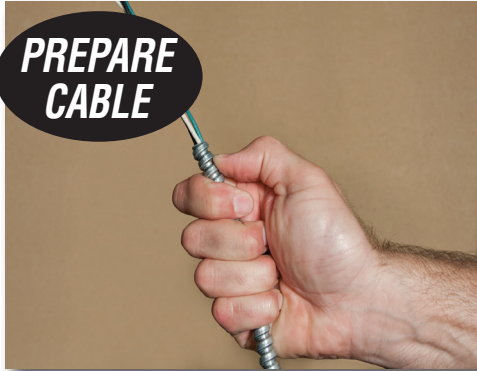




# The Fastest way to terminate MC into a Box

## EASY AS 1...2...3



RACO STAB-IT® boxes **built-in cable connectors** for flexible armored cable. The patent pending design locks the cable in place quickly and easily to increase production on every job.

### Application

- For any job where flexible armored cable is being used (see selection chart below)

### Product Features

- Designed to quickly install of flex, MC, MCI, MCI-A, AC, HCF
- Accepts cable sizes from 14/2 up to 10/3 for most cable types
- **3 TIMES FASTER** than traditional connectors
- Available in 4" sq. 2-1/8" deep boxes with 1 or 2 STAB-IT® connectors

- Available in 2-1/2" deep switch boxes for new work, old work, and stud mounting
- 4" Square Boxes available with built-in cable management clip for first means of support
- UL Listed for use without a plastic bushing (except for AC Cable)
- Each STAB-IT® connector accommodates two cables
- 4" Square Boxes available with "H" or "M" brackets for stud mounting
- Pre-installed 8" solid #12 pigtail for faster installation
- Suitable for use without a bonding jumper in circuits up to 600 volts
- Cable easily removed, allows connector to be reused
- UL listed
- Patent Pending
- Designed in USA



## Reduce SKU's

Manage fewer inventory SKU's

## Reduce Work Site Waste

Fewer SKU's on site means less trash to dispose of

## Increase Productivity

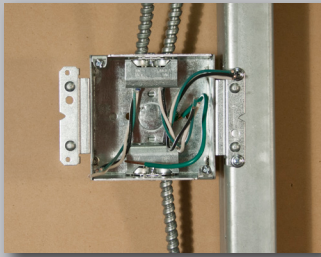
Cut down on installation time by 3X!

Cable Types and Ranges for STAB-IT® Clamp	
Cable Type	Cable Range
AC Steel & Aluminum	14-2, 14-3, 14-4, 12-2, 12-3, 12-4, 10-2, 10-3
HCF AC Steel	14-2, 14-3, 14-4, 12-2, 12-3, 10-2, 10-3
HCF AC Aluminum	12-2, 12-3, 12-4, 10-2, 10-3
MC Steel & Aluminum	14-2, 14-3, 14-4, 12-2, 12-3, 12-4, 10-2, 10-3
MCI-A Steel & Aluminum	14-2, 14-3, 14-4, 12-2, 12-3, 12-4, 10-2, 10-3
HCF MCI-A Steel	12-2, 12-3, 10-2
HCF MCI-A Aluminum	14-2, 14-3, 14-4, 12-2, 12-3, 12-4, 10-2, 10-3
<b>Cable Range .400" Dia. Min. to .605" Dia. Max.</b>	
Cable Armor must comply with NEC 250.96 To remove cable, unscrew clamp from the box then pull clamp off cable. To install more cables, use any of the RACO® REDI-LOC® connectors.	

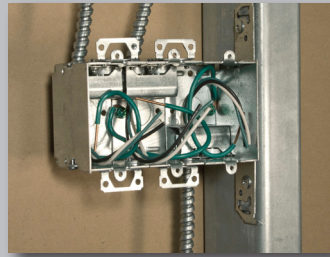


# A BOX FOR EVERY APPLICATION

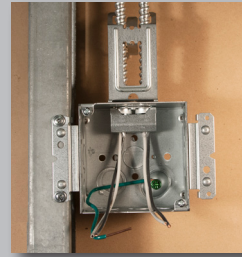
WITH BUILT-IN FIRST MEANS OF SUPPORT



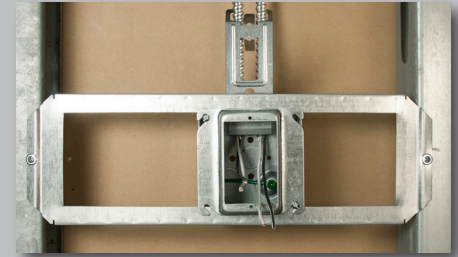
Ideal for PREFAB Applications



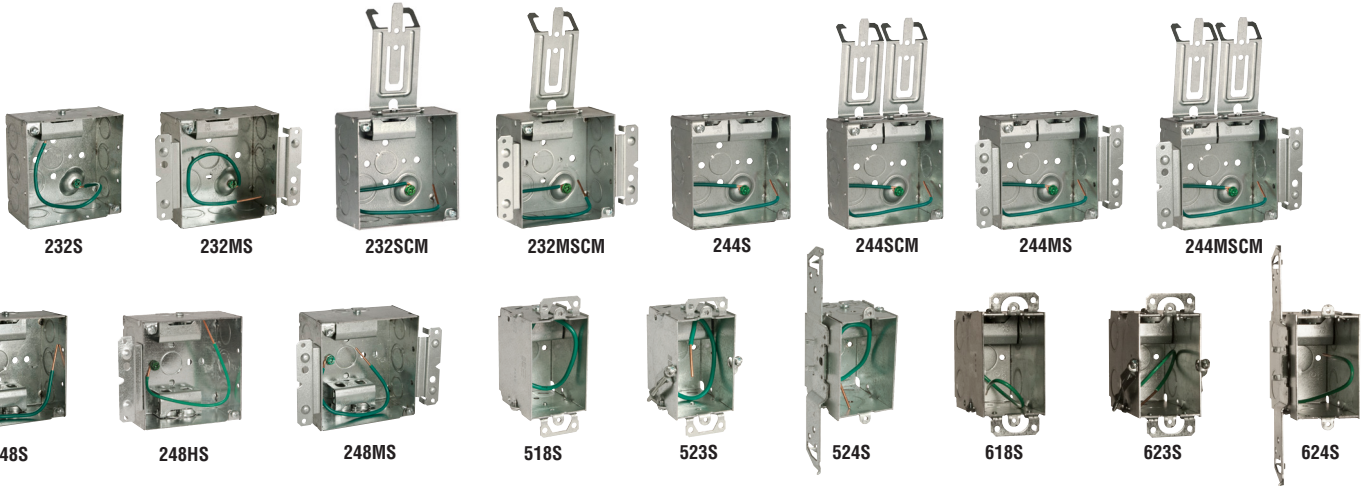
Gangable



232MSCM



232SCM



CAT. NO.	DESCRIPTION	CU. IN. CAP.	CTN. QTY.	CTN. DIMS.	KNOCKOUTS		UPC-A
					SIDES	BOTTOM	
232S	4" Sq., 2-1/8" Dp., (1) STAB-IT® Connector, w/Pigtail	30.3	25	18.75L x 7.375W x 8.625H	(6) 1/2", (3) 1/2"-3/4" TKO	(1) 1/2", (1) 1/2"-3/4" TKO	050169500705
232MS	4" Sq., 2-1/8" Dp., (1) STAB-IT Connector, M Bracket, w/Pigtail	30.3	25	20.875L x 8.5W x 8.75H	(6) 1/2", (3) 1/2"-3/4" TKO	(1) 1/2", (1) 1/2"-3/4" TKO	050169500736
232SCM	4" Sq., 2-1/8" Dp., (1) STAB-IT Connector, w/Pigtail and Cable Management Clip	30.3	25	18.75L x 7.375W x 8.625H	(6) 1/2", (3) 1/2"-3/4" TKO	(1) 1/2", (1) 1/2"-3/4" TKO	050169892329
232MSCM	4" Sq., 2-1/8" Dp., (1) STAB-IT Connector, M Brkt, w/Pigtail and Cable Management Clip	30.3	25	20.875L x 8.5W x 8.75H	(6) 1/2", (3) 1/2"-3/4" TKO	(1) 1/2", (1) 1/2"-3/4" TKO	050169922323
244S	4" Sq., 2-1/8" Dp., (2) STAB-IT Connectors on top, w/Pigtail	30.3	25	18.75L x 7.375W x 8.5H	(6) 1/2", (3) 1/2"-3/4" TKO	(1) 1/2", (1) 1/2"-3/4" TKO	050169982440
244SCM	4" Sq., 2-1/8" Dp., (2) STAB-IT Connectors on top, w/Pigtail and (2) Cable Management Clips	30.3	25	18.75L x 7.375W x 8.5H	(6) 1/2", (3) 1/2"-3/4" TKO	(1) 1/2", (1) 1/2"-3/4" TKO	050169962442
244MS	4" Sq., 2-1/8" Dp., (2) STAB-IT Connectors on top, M Bracket, w/Pigtail	30.3	25	20.875L x 8W x 8.5H	(6) 1/2", (3) 1/2"-3/4" TKO	(1) 1/2", (1) 1/2"-3/4" TKO	050169992449
244MSCM	4" Sq., 2-1/8" Dp., (2) STAB-IT Connectors on top, M Bracket, w/Pigtail and (2) Cable Management Clips	30.3	25	20.875L x 8W x 8.5H	(6) 1/2", (3) 1/2"-3/4" TKO	(1) 1/2", (1) 1/2"-3/4" TKO	050169972441
248S	4" Sq., 2-1/8" Dp., (2) STAB-IT Connectors, w/Pigtail	30.3	25	19L x 7.75W x 8.75H	(4) 1/2", (2) 1/2"-3/4" TKO	(1) 1/2", (1) 1/2"-3/4" TKO	050169500712
248HS	4" Sq., 2-1/8" Dp., (2) STAB-IT Connectors, H Bracket, w/Pigtail	30.3	25	20.875L x 8.5W x 8.75H	(4) 1/2", (2) 1/2"-3/4" TKO	(1) 1/2", (1) 1/2"-3/4" TKO	050169501122
248MS	4" Sq., 2-1/8" Dp., (2) STAB-IT Connectors, M Bracket, w/Pigtail	30.3	25	20.875L x 8.5W x 8.75H	(4) 1/2", (2) 1/2"-3/4" TKO	(1) 1/2", (1) 1/2"-3/4" TKO	050169500798
518S	3" x 2" x 2-1/2" Dp., Old Work Switch Box (1) STAB-IT Connector, w/Pigtail	12.5	25	12.875L x 8.75W x 5.375H	—	(1) 1/2"	050169500781
523S	3" x 2" x 2-1/2" Dp., Old Wk Switch Bx (1) STAB-IT Cnctr, w/Old Wk Clips, w/Pigtail	12.5	25	11.25L x 8.5W x 8.25H	—	(1) 1/2"	050169500514
524S	3" x 2" x 2-1/2" Dp., Old Wk Switch Bx (1) STAB-IT Cnctr, w/TS Bracket, w/Pigtail	12.5	50	20.0L x 13.5W x 7.25H	—	(1) 1/2"	050169500729
618S	3" x 2" x 3-1/2" Dp., Old Work Switch Box (1) STAB-IT Connector, w/Pigtail	18.0	25	11.125L x 10W x 8.375H	—	(1) 1/2"	050169966181
623S	3" x 2" x 3-1/2" Dp., Old Wk Switch Bx (1) STAB-IT Cnctr, w/Old Wk Clips, w/Pigtail	18.0	25	13.125L x 10W x 8.375H	—	(1) 1/2"	050169966235
624S	3" x 2" x 3-1/2" Dp., Old Wk Switch Bx (1) STAB-IT Cnctr, w/TS Bracket, w/Pigtail	18.0	25	16.125L x 11.25W x 7.625H	—	(1) 1/2"	050169966242

1 STAB-IT® connector can accommodate up to 2 cables. 2 STAB-IT® connectors can accommodate up to 4 cables



**COMMERCIAL CONSTRUCTION**  
A Division of Hubbell Incorporated (Delaware)

**RACO**  
3902 W. Sample St.  
South Bend, IN 46619  
574-234-7151  
[www.hubbell.com/raco/en](http://www.hubbell.com/raco/en)

