

SOLAR

RACO[®], TAYMAC[®] and BELL[®] offer a full line of electrical products that are ideally suited to help you complete your next solar project



Commercial, Industrial and Residential Electrical Products



RACO[®]

TAYMAC[®]

BELL[®]

RACO® fittings are the perfect solar solution whether you need to couple, connect, fasten, or ground conduit and cable.

- Fittings are designed to save time on the job
- RACO Liquidtight and Raintight series fittings are UL approved for wet locations
- Insulated throats protect conductors during wire pulling
- Premium set screws provide reliable continuity of ground
- Locknuts won't slip or spin

LIQUIDTIGHT FITTINGS

- Patented split gland-ring prevents pullouts. It is flexible and designed for quick and easy installation.
- All components are reusable – May be disassembled and reused after years of service
- Sealing washer and locknut are included with every connector
- Durable Steel/Malleable Iron construction
- ½" – 4" trade sizes in Straight and 90 degree; ½" – 2" trade sizes in 45 degree
- Suitable for use in Class I, Div 2; Class II, Div 1 & 2; Class III, Div 1 & 2 hazardous locations
- UL Listed E195969; CSA Listed C22.2 #18

DIE CAST ZINC THREADED HUBS

- Wet or dry locations
- For use with threaded Rigid/IMC conduit
- Rugged Die Cast construction
- O-ring seals the assembly providing a raintight seal
- ½" – 4" trade sizes available
- UL Listed E195969; CSA Listed C22.2 #18

RT EMT COMPRESSION CONNECTORS

- RACO EMT Raintight Series connectors and couplings are designed to comply with the requirements of the 2008 NEC 358.42 and 314.15
- Durable all-steel construction with zinc electroplate finish
- Knockout seal and locknut are included with every connector
- No need for special tools or torque wrench for proper installation
- Blue tinted nuts for quick identification
- ½" – 4" trade sizes available
- cULus Listed E195970, C22.2 #18

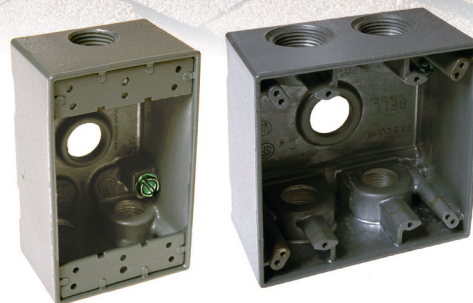
MALLEABLE IRON GROUNDING BUSHING

- For use with threaded Rigid/IMC conduit
- Insuliner temperature rated at 150°C
- Lay-in and Feed-thru lug styles available
- Dual rated aluminum grounding lugs may be used with copper or aluminum grounding conductors
- Zinc electroplated malleable iron construction
- ½" – 4" trade sizes available
- UL Listed, CSA Listed C22.2 #18
- For use with threaded Rigid/IMC conduit

BELL® and TAYMAC® offers a full line of weatherproof electrical products that are ideally suited to the solar solution.

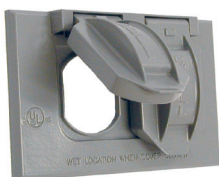
BELL BOXES

- State of the art powder coat finish
- Eight box mounting options with detachable lug
- Closure plugs included
- Ground Screw installed
- UL Listed, CSA Listed C22.2 #18



METAL DEVICE AND BLANK COVERS

- Rugged Metal Construction
- State of the art powder coat finish
- Installation hardware, gasket and instructions included
- UL Listed



METALLIC IN-USE COVERS – EXTRA DUTY

- Premium powder coat finish on die cast material.
- Patented Quick-Fit keyhole mounting system allows for installation in under a minute.
- Preconfigured for a GFCI and includes patented Universal-Fit adapters for customer fitting to multiple receptacles and switches.
- Lockable open or closed.
- UL Listed, meets Extra Duty



NON-METALLIC IN-USE COVERS – EXTRA DUTY

- High impact polycarbonate construction
- Patented Quick-Fit keyhole mounting system allows for installation in under a minute
- Preconfigured for a GFCI and includes patented Universal-Fit adapters for customer fitting to multiple receptacles and switches.
- Horizontal or Vertical mount
- UL Listed, meets Extra Duty





WIEGMANN®
A Division of Hubbell Incorporated (Delaware)

NEMA 3R Enclosures



KILLARK®
A Division of Hubbell Incorporated (Delaware)

E Series Conduit Bodies



 **BURNDY®**

C-Taps



WIEGMAN PART #	PRODUCT DESCRIPTION
RSCG040436	RSC Gutter, NEMA 3R, 4X4X36
RSCG040448	RSC Gutter, NEMA 3R, 4X4X48
RSC040404	RSC Rainproof NEMA3R CS 4X4X4
RSCG060648	RSC Gutter, NEMA 3R, 6X6X48
RSC060604	RSC Rainproof NEMA3R CS 6X6X4
RSC060606	RSC Rainproof NEMA3R CS 6X6X6
RSC080806	RSC Rainproof NEMA3R CS 8X8X6
SC060604	SC Pull Box CS 6X6X4
HS444NK	WW, HC, SC No KO's CS 4X4X48"
HS664NK	WW, HC, SC No KO's CS 6X6X48"
HS665NK	WW, HC, SC No KO's CS 6X6X60"

BURNDY PART #	PRODUCT DESCRIPTION
YC2L12	COPPER COMPRESSION C TAP 4 AWG (RUN) 4 AWG (TAP)
YC3L12	COPPER COMPRESSION C TAP 5-4 AWG (RUN) 6-5 AWG (TAP)
YC4L12	COPPER COMPRESSION C TAP 6 AWG (RUN) 6-8 AWG (TAP)
YC6L12	COPPER COMPRESSION C TAP 8 AWG (RUN) 10-8 AWG (TAP)
YC8L12	COPPER COMPRESSION C TAP 10 AWG (RUN) 10 AWG (TAP)

KILLARK PART #	PRODUCT DESCRIPTION
EAC-1CGN	E-PAK 1/2" C 10 PER
EAC-2CGN	E-PAK 3/4" C 10 PER
EAC-3CGN	E-PAK 1" C 5 PER
EALB-1CGN	E-PAK 1/2" LB 10 PER
EALB-2CGN	E-PAK 3/4" LB 10 PER
EALB-3CGN	E-PAK 1" LB 5 PER
EALB-4CGN	E-PAK 1-1/4" LB 2 PER
EALB-5CGN	E-PAK 1-1/2" LB 2 PER
EALB-6CGN	E-PAK 2" LB 1 PER
EALB-7CGN	E-PAK 2-1/2" LB 1 PER
EALL-1CGN	E-PAK 1/2" LL 10 PER
EALL-2CGN	E-PAK 3/4" LL 10 PER
EALL-3CGN	E-PAK 1" LL 5 PER
EALR-1CGN	E-PAK 1/2" LR 10 PER
EALR-2CGN	E-PAK 3/4" LR 10 PER
EALR-3CGN	E-PAK 1" LR 5 PER
EAT-1CGN	E-PAK 1/2" T 10 PER
EAT-2CGN	E-PAK 3/4" T 10 PER
EAT-3CGN	E-PAK 1" T 5 PER
BL-90-2	ELBOW, MALE/FEM 90 DEG AL 3/4"
BL-90-3	ELBOW, MALE/FEM 90 DEG AL 1"
EALL-4	1.25" LL BODY THREADED
EALL-5	1.5" LL CONDUIT BODY THREADED
EALR-2	1/4" LR CONDUIT BODY THREADED
EALR-4	1.25" LR BODY THREADED
EALR-5	1-1/2" LR CONDUIT BODY THREADED
EGKN-1	1/2" RUB GASK E SERIES 100 PER
EGKN-2	3/4" NEOPRENE GASKET
EGKN-3	1" RUB GAS E SERIES 100 PER
EGKN-4	1.25 - 1.5" NEOPRENE GASKET
EGKN-5	2" NEOPRENE GASKET



RACO PART #	PRODUCT DESCRIPTION
237	4 SQUARE BOX WITH FM BRACKET 2-1/8DP 1/2-3/4-TKO STEEL
860	HANDY BOX COVER 4x2 BLANK STEEL
1003	LOCKNUT RGD/IMC CONDUIT 3/4" STEEL
1135	BSHG GRND FDTHRU 1-1/4" INSULATED 150 DEGREES C
1142	REDUCING BUSHING 3/4" to 1/2"
1143	REDUCING BUSHING 1" to 1/2" STEEL
1144	REDUCING BUSHING 1" to 3/4" STEEL
1145	REDUCING BUSHING 1-1/4" to 1/2" STEEL
1162	REDUCING BUSHING 2-1/2" to 2"
1193	LOCKNUT RGD/IMC CONDUIT 3/4"NON-UL STEEL
1194	LOCKNUT RGD/IMC CONDUIT 1" NON-UL STEEL
1195	LOCKNUT RGD/IMC CONDUIT 1-1/4" NON-UL STEEL
1203	LOCKNUT SEALNG RIGID/IMC CONDUIT 3/4" STEEL
1204	LOCKNUT SEALNG RIGID/IMC CONDUIT 1" STEEL
1205	LOCKNUT SEALNG RIGID/IMC CONDUIT 1-1/4" STEEL
1206	LOCKNUT SEALNG RIGID/IMC CONDUIT 1-1/2" STEEL
1208	LOCKNUT SEALNG RIGID/IMC CONDUIT 2" STEEL
1212	BUSHING GROUND FEED-THRU 1/2" INSULATED 150 DEGREES C
1213	BUSHING GROUND FEED-THRU 3/4" INSULATED 150 DEGREES C
1214	BUSHING GROUND FEED-THRU 1" INSULATED 150 DEGREES C
1332	1/2" 90 DEGREE DIE CAST ZINC EMT CONNECTOR
1365	REDUCING WASHER 3/4"-to-1/2" STEEL
1366	REDUCING WASHER 1"-1/2" STEEL
1367	REDUCING WASHER 1"-to-3/4" STEEL
1370	REDUCING WASHER 1-1/4"-to-1" STEEL
1404	PLASTIC BUSHING 1" 105 DEGREES C
1454	1" RIGID OFFSET NIPPLE
1483	FLEXIABLE COUPLING-to-EMT COMB 3/4" DIE CAST
1665	CONDUIT NIPPLE 1-1/4" NON-INSULATED DIE CAST
1702	HUB RIGID/IMC 1/2" DIE CAST INSULATED KB
1703	HUB RIGID/IMC 3/4" DIE CAST INSULATED
1704	HUB RIGID/IMC 1" DIE CAST INSULATED
1705	HUB RIGID/IMC 1-1/4" INSULATED DIE CAST
1706	HUB RIGID/IMC 1-1/2" INSULATED DIE CAST
1708	HUB RIGID/IMC 2" INSULATED DIE CAST
1808	CONNECTOR RIGID/IMC COMPRESSION 2" IRON/STEEL
1810	CONNECTOR RIGID/IMC COMPRESSION 2-1/2" IRON/STEEL
2004	CONNECTOR EMT SET SCREW 1" STEEL
2005	CONNECTOR EMT SET SCREW 1-1/4" STEEL
2006	CONNECTOR EMT SET SCREW 1-1/2" STEEL
2008	CONNECTOR EMT SET SCREW 2" STEEL
2023	COUPLING EMT SET SCREW 3/4" STEEL
2023	3/4" EMT COMPRESSION CONNECTOR
2054	1" RIGID EMT CONDUIT HANGER
2083	3/4" STAMPED STEEL 1 HOLE PUSH ONE STRAP
2084	1" STAMPED STEEL 1 HOLE PUSH ONE STRAP
2123	CONNECTOR EMT SET SCREW 3/4" INSULATED STEEL
2124	CONNECTOR EMT SET 1" INSULATED STEEL
2204	CONNECTOR FLEX AC/MC 90 DEGREE SQUEEZE 1" IRN
2273	COUPLING FLEX SCREW-IN 3/4" STEEL
2283	CONNECTOR FLEX AC/MC SCRW-IN 3/4" STEEL

RACO PART #	PRODUCT DESCRIPTION
2410	ENTERENCE HEAD WITH CLAMP RIGID/IMC/EMT 2-1/2" ALUMINUM
2504	GROUND CLAMP 1/2",3/4",1" PIPE #2-10
2505	GROUND CLAMP 1-1/4",1-1/2",2" PIPE #2-10
2512	GROUND CLAMP 1/2"RGD CNDT 1/2" to 1" PIPE
2603	CONNECTOR EMT SET SCREW 3/4" DIE CAST
2604	CONNECTOR EMT SET SCREW 1" DIE CAST
2605	CONNECTOR EMT SET SCREW 1-1/4" DIE CAST
2606	CONNECTOR EMT SET SCREW 1-1/2" DIE CAST
2608	CONNECTOR EMT SET SCREW 2" DIE CAST
2624	COUPLNG EMT SET SCREW 1" DIE CAST
2634	CONNECTOR EMT SET SCREW 1/2" INSULATED DIE CAST
2635	CONNECTOR EMT SET SCREW 3/4" INSULATED DIE CAST
2636	CONNECTOR EMT SET SCREW 1" INSULATED DIE CAST
2637	CONNECTOR EMT SET SCREW 1-1/4" INSULATED DIE CAST
2638	CONNECTOR EMT SET SCREW 1-1/2" INSULATED DIE CAST
2639	CONNECTOR EMT SET SCREW 2" INSULATED DIE CAST
2654	HANDY ELL RIGID 90 DEGREES 1" FEMALE THREAD DIE CAST
2693	CONNECTOR FLEX AC/MC 90DEG SQZ 3/4" DIE CAST
2694	CONNECTOR FLEX AC/MC 90DEG SQZ 1" DIE CAST
2753	HANDY ELL COUPLING EMT 90DEG 3/4" FEMALE SET SCREW DIE CAST
2805	CONNECTOR EMT COMPRESSION 1-1/4" DIE CAST
2864	1" DIE CAST ZINC NON-METALLIC SHEATHED CORD CONNECTOR
2904	1" STEEL UNINSULATED COMPRESSION CONNECTOR
2908	2" STEEL UNINSULATED COMPRESSION CONNECTOR
2913	CONNECTOR EMT COMPRESSION INSULATED 3/4" STEEL
2923	COUPLNG EMT COMPRESSION 3/4" STEEL
3028	COUPLNG RIGID/IMC SET SCREW 2" STEEL
8235	4 SQUARE BOX WITH TS BRACKET 2-1/8DP 1/2-3/4-TKO STEEL
2003	CONNECTOR EMT SET SCREW 3/4" STEEL
2004	CONNECTOR EMT SET SCREW 1" STEEL
2905RT	CONNECTOR EMT COMPRESSION RAINLIGHT 1-1/4" STEEL
2906RT	CONNECTOR EMT COMPRESSION RAINLIGHT 1-1/2" STEEL
2908RT	CONNECTOR EMT COMPRESSION RAINLIGHT 2" STEEL
2912RT	CONNECTOR EMT COMPRESSION RAINLIGHT INSULATED 1/2" STEEL
2913RT	CONNECTOR EMT COMPRESSION RAINLIGHT INSULATED 3/4" STEEL
2914RT	CONNECTOR EMT COMPRESSION RAINLIGHT INSULATED 1"TS STEEL
2915RT	CONNECTOR EMT COMPRESSION RAINLIGHT INSULATED 1-1/4" STEEL
2916RT	CONNECTOR EMT COMPRESSION RAINLIGHT INSULATED 1-1/2" STEEL
2918RT	CONNECTOR EMT COMPRESSION RAINLIGHT INSULATED 2"TS STEEL
2922RT	COUPLING EMT COMPRESSION RAINLIGHT 1/2" STEEL
2923RT	COUPLNG EMT COMPRESSION RAINLIGHT 3/4" STEEL
2924RT	COUPLNG EMT COMPRESSION RAINLIGHT 1" STEEL
2925RT	COUPLNG EMT COMPRESSION RAINLIGHT 1-1/4" STEEL
2926RT	COUPLNG EMT COMPRESSION RAINLIGHT 1-1/2" STEEL
2928RT	COUPLNG EMT COMPRESSION RAINLIGHT 2" STEEL
5346-0	WEATHER PROOF BOX 2-GANG (7)3/4 OUTLETS GREY
MM410C	SINGLE GANG 16 IN 1 WHILE-IN-USE COVER
MM2410C	DOUBLE GANG 55 IN 1 WHILE-IN-USE COVER
ML450G	SINGLE GANG 16 IN 1 EXPANDABLE COVER
MX4208S	METAL LOW PROFILE IN-USE HORIZONTAL COVER 8 IN 1
MX4380S	METAL LOW PROFILE IN-USE VERTICAL COVER 8 IN 2

COMMERCIAL, INDUSTRIAL AND RESIDENTIAL ELECTRICAL PRODUCTS