





### CE Series

- Universal Face
- Damp Location Listed
- NiCad Battery
- 120/277 VAC

tradeSELECT

| Part Number | Catalog Number | UPC Code     | Description                                  | CA 03 | GA 27 | IL 06 | NJ 12 | TX 04 | Wt. each | Ctn. Qty |
|-------------|----------------|--------------|--|-------|-------|-------|-------|-------|----------|----------|
| 93043113    | CER            | 856143001448 | Red Letters, White Housing                   | •     | •     | •     | •     | •     | 2.00 lbs | 6        |
| 93053081    | CERB           | 782520867126 | Red Letters, Black Housing                   | •     | •     |       |       |       | 2.00 lbs | 6        |
| 93043116    | CERRC          | 856143001462 | Red Letters, Remote Capacity, White Housing  | •     | •     | •     | •     | •     | 2.00 lbs | 6        |
| 93053083    | CERRCB         | 782520867140 | Red Letters, Remote Capacity, Black Housing  | •     | •     |       |       |       | 2.00 lbs | 6        |
| 93043114    | CEG            | 856143001455 | Green Letters, White Housing                 | •     | •     | •     | •     | •     | 2.00 lbs | 6        |
| 93053082    | CEGB           | 782520867133 | Green Letters, Black Housing                 | •     | •     |       |       |       | 2.00 lbs | 6        |
| 93043117    | CEGRC          | 856143001479 | Green Letters, Remote Capacity White Housing | •     | •     |       |       |       | 2.00 lbs | 6        |
| 93081857    | CAR            | 856143002209 | Red Letters, White Housing, AC Only          | •     | •     | •     | •     |       | 2 lbs.   | 6        |
| 93081858    | CAG            | 856143002216 | Green Letters, White Housing, AC Only        | •     | •     |       |       |       | 2 lbs.   | 6        |
| 93081859    | CARB           | 856143002223 | Red Letters, Black Housing, AC Only          | •     | •     |       |       |       | 2 lbs.   | 6        |
| 93081860    | CAGB           | 856143002230 | Green Letters, Black Housing, AC Only        | •     | •     |       |       |       | 2 lbs.   | 6        |



### CC Series

- Combination LED Exit/Unit
- Damp Location Listed
- NiCad Battery
- LED Lamps

tradeSELECT

| Part Number | Catalog Number | UPC Code     | Description  | CA 03 | GA 27 | IL 06 | NJ 12 | TX 04 | Wt. each | Ctn. Qty |
|-------------|----------------|--------------|--|-------|-------|-------|-------|-------|----------|----------|
| 93043109    | CCR            | 856143001400 | Red Letters, White Housing Single/Double Face                    | •     | •     | •     | •     | •     | 2.5 lbs  | 6        |
| 93053078    | CCRB           | 782520867096 | Red Letters, Black Housing Single/Double Face                    | •     | •     |       |       |       | 2.5 lbs  | 6        |
| 93043110    | CCG            | 856143001417 | Green Letters, White Housing Single/Double Face                  | •     | •     |       |       | •     | 2.5 lbs  | 6        |
| 93053079    | CCGB           | 782520867102 | Green Letters, Black Housing Single/Double Face                  | •     | •     |       |       |       | 2.5 lbs  | 6        |
| 93043111    | CCRRC          | 856143001424 | Red Letters, White Housing Single/Double Face, Remote Capacity   | •     | •     | •     | •     | •     | 2.5 lbs  | 6        |
| 93053080    | CCRRCB         | 782520867119 | Red Letters, Black Housing Single/Double Face, Remote Capacity   | •     | •     |       |       |       | 2.5 lbs  | 6        |
| 93043112    | CCGRC          | 856143001431 | Green Letters, White Housing Single/Double Face, Remote Capacity | •     | •     |       |       |       | 2.5 lbs  | 6        |

## CC SQ Series



- Square High-Output LED lamp-heads
- Universal Face
- Damp Location Listed
- 120/277VAC
- NiCad Battery
- Thermoplastic Housing

tradeSELECT®

| Part Number | Catalog Number | UPC Code     | Description                  | CA 03 | GA 27 | IL 06 | NJ 12 | TX 04 | Wt. each | Ctn. Qty |
|-------------|----------------|--------------|------------------------------|-------|-------|-------|-------|-------|----------|----------|
| 93081855    | CCRHOSQ        | 856143002186 | Red Letters, White Housing   | •     |       | •     | •     | •     | 2.5 lbs. | 6        |
| 93081856    | CCGHOSQ        | 856143002193 | Green Letters, White Housing | •     |       |       | •     |       | 2.5 lbs. | 6        |



## CEL Series

- Commercial LED Edge-Lit Exit Sign
- Brushed Aluminum Housing with Battery
- 120/277 VAC

tradeSELECT®

| Part Number | Catalog Number | UPC Code     | Description                                | CA 03 | GA 27 | IL 06 | NJ 12 | TX 04 | Wt. each | Ctn. Qty |
|-------------|----------------|--------------|--|-------|-------|-------|-------|-------|----------|----------|
| 93043118    | CELS1RNE       | 856143001547 | Red Letters, Single Face, Surface Mount    | •     | •     |       | •     | •     | 3.23 lbs | 6        |
| 93043119    | CELS1GNE       | 856143001554 | Green Letters, Single Face, Surface Mount  | •     |       |       |       |       | 3.23 lbs | 6        |
| 93043120    | CELS2RNE       | 856143001561 | Red Letters, Double Face, Surface Mount    | •     | •     |       | •     |       | 3.23 lbs | 6        |
| 93043121    | CELS2GNE       | 856143001578 | Green Letters, Double Face, Surface Mount  | •     |       |       |       |       | 3.23 lbs | 6        |
| 93043122    | CELR1RNE       | 856143001585 | Red Letters, Single Face, Recessed Mount   | •     | •     |       | •     |       | 6.14 lbs | 3        |
| 93043123    | CELR1GNE       | 856143001592 | Green Letters, Single Face, Recessed Mount | •     |       |       |       |       | 6.14 lbs | 3        |
| 93043124    | CELR2RNE       | 856143001608 | Red Letters, Double Face, Recessed Mount   | •     | •     |       | •     |       | 6.14 lbs | 3        |
| 93043125    | CELR2GNE       | 856143001615 | Green Letters, Double Face, Recessed Mount | •     |       |       |       |       | 6.14 lbs | 3        |



## CEW Series

- NiCad Battery
- Impact Resistant Polycarbonate Housing and Face-Plate
- 120/277 VAC
- Green or Red LED with Battery

tradeSELECT®

| Part Number | Catalog Number | UPC Code     | Description                | CA 03 | GA 27 | IL 06 | NJ 12 | TX 04 | Wt. each  | Ctn. Qty |
|-------------|----------------|--------------|----------------------------|-------|-------|-------|-------|-------|-----------|----------|
| 93047782    | CEWSRE         | 856143001646 | Red Letters, Single Face   | •     | •     | •     | •     | •     | 4.30 lbs  | 6        |
| 93047783    | CEWDRE         | 856143001653 | Red Letters, Double Face   |       | •     | •     | •     |       | 4.30 lbs. | 6        |
| 93047784    | CEWSGE         | 856143001660 | Green Letters, Single Face | •     |       |       |       |       | 4.30 lbs  | 6        |
| 93047785    | CEWDGE         | 856143001677 | Green Letters, Double Face | •     |       |       |       |       | 4.30 lbs. | 6        |



### CSR Series

- 120 or 220-240VAC
- 50/60 Hz Input

- White Thermoplastic Housing
- Universal Face

tradeSELECT®

| Part Number | Catalog Number | UPC Code     | Description   | CA 03 | GA 27 | IL 06 | NJ 12 | TX 04 | Wt. each  | Ctn. Qty |
|-------------|----------------|--------------|---|-------|-------|-------|-------|-------|-----------|----------|
| 93058260    | CSRIV          | 856143001783 | International Voltage SALIDA LED Sign, AC only                      | ●     | ●     |       |       |       | 2.00 lbs. | 6        |
| 93058261    | CSREIV         | 856143001790 | International Voltage SALIDA LED Sign, Emergency with NiCad battery | ●     | ●     |       |       |       | 2.00 lbs. | 6        |



### CCE Series

- Thin Die-Cast LED Exit Sign
- 120/277 VAC Input

- AC or Emergency
- Top, End or Ceiling Mount

tradeSELECT®

| Part Number | Catalog Number | UPC Code     | Description                               | CA 03 | GA 27 | IL 06 | NJ 12 | TX 04 | Wt. each | Ctn. Qty |
|-------------|----------------|--------------|---|-------|-------|-------|-------|-------|----------|----------|
| 93047786    | CCE SRE        | 856143001684 | Red Letters, Single Face, NiCad Battery   | ●     | ●     |       |       |       | 2.80 lbs | 8        |
| 93047787    | CCE DRE        | 856143001691 | Red Letters, Double Face, NiCad Battery   | ●     | ●     |       |       |       | 2.80 lbs | 8        |
| 93047788    | CCE SGE        | 856143001707 | Green Letters, Single Face, NiCad Battery | ●     |       |       |       |       | 2.80 lbs | 8        |
| 93047789    | CCE DGE        | 856143001714 | Green Letters, Double Face, NiCad Battery | ●     |       |       |       |       | 2.80 lbs | 8        |
| 93047790    | CCE SR         | 856143001721 | Red Letters, Single Face, AC Only         | ●     | ●     |       |       |       | 2.80 lbs | 8        |
| 93047791    | CCE DR         | 856143001738 | Red Letters, Double Face, AC Only         | ●     | ●     |       |       |       | 2.80 lbs | 8        |
| 93047792    | CCE SG         | 856143001745 | Green Letters, Single Face, AC Only       | ●     |       |       |       |       | 2.80 lbs | 8        |
| 93047793    | CCE DG         | 856143001752 | Green Letters, Double Face, AC Only       | ●     |       |       |       |       | 2.80 lbs | 8        |



### CWC Series

- Wet Location Combination Exit/ Emergency Light
- UL924 Wet Location Listed

- Fully adjustable LED lamp-heads

tradeSELECT®

| Part Number | Catalog Number | UPC Code     | Description   | CA 03 | GA 27 | IL 06 | NJ 12 | TX 04 | Wt. each | Ctn. Qty |
|-------------|----------------|--------------|---|-------|-------|-------|-------|-------|----------|----------|
| 93063664    | CWC1RW         | 856143001837 | White Housing, Single Face, Red Letters                               | ●     | ●     |       |       |       | 8.00 lbs | 4        |
| 93063665    | CWC2RW         | 856143001844 | White Housing, Double Face, Red Letters                               | ●     | ●     |       |       |       | 8.00 lbs | 4        |
| 93063666    | CWC1GW         | 856143001851 | White Housing, Single Face, Green Letters                             | ●     |       |       |       |       | 8.00 lbs | 4        |
| 93063667    | CWC2GW         | 856143001868 | White Housing, Double Face, Green Letters                             | ●     |       |       |       |       | 8.00 lbs | 4        |
| 93063668    | CWC1RW-CT      | 856143001875 | White Housing, Single Face, Red Letters, Cold Temperature Operation   | ●     | ●     |       |       |       | 8.00 lbs | 4        |
| 93063669    | CWC2RW-CT      | 856143001882 | White Housing, Double Face, Red Letters, Cold Temperature Operation   | ●     | ●     |       |       |       | 8.00 lbs | 4        |
| 93063670    | CWC1GW-CT      | 856143001899 | White Housing, Single Face, Green Letters, Cold Temperature Operation | ●     |       |       |       |       | 8.00 lbs | 4        |
| 93063671    | CWC2GW-CT      | 856143001905 | White Housing, Double Face, Green Letters, Cold Temperature Operation | ●     |       |       |       |       | 8.00 lbs | 4        |

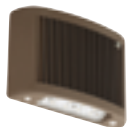


## RME Series

- Running Man LED Exit Sign
- 120/347 VAC Input
- Wall, End or Ceiling Mount

tradeSELECT™

| Part Number | Catalog Number | UPC Code     | Description  | CA 03 | GA 27 | IL 06 | NJ 12 | TX 04 | Wt. each  | Ctn. Qty |
|-------------|----------------|--------------|--|-------|-------|-------|-------|-------|-----------|----------|
| 93069595    | RMEUW          | 856143001998 | Universal Single/Double Face, AC Only, 120/347VAC              | •     | •     |       |       |       | 6.00 lbs. | 1        |
| 93069596    | RMEUWE         | 856143002001 | Universal Single/Double Face, Emergency with NiCad Battery     | •     | •     |       |       |       | 6.00 lbs. | 1        |
| 93069597    | RMEUWE-SD      | 856143002018 | Universal Single/Double Face, Emergency with NiCad Battery, SD | •     | •     |       |       |       | 6.00 lbs. | 1        |



## CUSO Series

- Slim LED AC/Emergency Outdoor Light
- 8 high powered LEDs- AC 1600 lumens, emergency 600 lumens
- Self-diagnostics/Self-Test
- UL924 Wet Location listed

tradeSELECT™

| Part Number | Catalog Number | UPC Code     | Description                                   | CA 03 | GA 27 | IL 06 | NJ 12 | TX 04 | Wt. each  | Ctn. Qty |
|-------------|----------------|--------------|---|-------|-------|-------|-------|-------|-----------|----------|
| 93073366    | CUSO DB        | 856143002087 | Outdoor AC/EM, 3000K, Dark Bronze             | •     | •     |       |       |       | 4.50 lbs. | 6        |
| 93073367    | CUSO DB-H      | 856143002094 | Outdoor AC/EM, 3000K, Dark Bronze with Heater | •     | •     |       |       |       | 4.50 lbs. | 6        |
| 93073368    | CUSO BK        | 856143002100 | Outdoor AC/EM, 3000K, Black                   | •     | •     |       |       |       | 4.50 lbs. | 6        |
| 93073369    | CUSO BK-H      | 856143002117 | Outdoor AC/EM, 3000K, Black with Heater       | •     | •     |       |       |       | 4.50 lbs. | 6        |
| 93073370    | CUSO WH        | 856143002124 | Outdoor AC/EM, 3000K, White                   | •     | •     |       |       |       | 4.50 lbs. | 6        |
| 93073371    | CUSO WH-H      | 856143002131 | Outdoor AC/EM, 3000K, White with Heater       | •     | •     |       |       |       | 4.50 lbs. | 6        |



## CUW Series

- Decorative LED AC/Emergency Light
- Wet Location Listed
- UL924
- Normally On and Emergency Operation

tradeSELECT™

| Part Number | Catalog Number | UPC Code     | Description  | CA 03 | GA 27 | IL 06 | NJ 12 | TX 04 | Wt. each  | Ctn. Qty |
|-------------|----------------|--------------|--|-------|-------|-------|-------|-------|-----------|----------|
| 93063364    | CUWZ-PC        | 856143001806 | Die-Cast, 0° to 50°C, with Photo-Control, Dark Bronze Finish           | •     | •     |       |       |       | 4.00 lbs. | 6        |
| 93063366    | CUWZ-HTR-PC    | 856143001820 | Die-Cast, -30° to 50°C, with HTR and Photo-Control, Dark Bronze Finish | •     | •     |       |       |       | 4.00 lbs. | 6        |



## CU2SQ Series

- Square Head LED Emergency Light
- Dual-Input 120/277VAC
- White or Black Housing
- Nickel Cadmium Battery
- Damp Location Listed

tradeSELECT™

| Part Number | Catalog Number | UPC Code     | Description                                 | CA 03 | GA 27 | IL 06 | NJ 12 | TX 04 | Wt. each  | Ctn. Qty |
|-------------|----------------|--------------|---|-------|-------|-------|-------|-------|-----------|----------|
| 93081852    | CU2SQ          | 856143002155 | White Housing, Square Head                  | •     | •     | •     | •     |       | 1.00 lbs  | 12       |
| 93081853    | CU2SQB         | 856143002162 | Black Housing, Square Head                  | •     | •     |       |       |       | 1.00 lbs  | 12       |
| 93081854    | CU2RCSQ        | 856143002179 | White Housing, Square Head, Remote Capacity | •     | •     |       |       |       | 1.00 lbs. | 12       |



tradeSELECT

### CU2 Series

- 2 Double Head LED Emergency Light
- Dual-Input 120/277 VAC
- NiCad Battery
- Damp Location Listed

| Part Number | Catalog Number | UPC Code     | Description                    | CA 03 | GA 27 | IL 06 | NJ 12 | TX 04 | Wt. each  | Ctn. Qty |
|-------------|----------------|--------------|--------------------------------|-------|-------|-------|-------|-------|-----------|----------|
| 93043107    | CU2            | 856143001486 | White Hosuing                  | •     | •     | •     | •     | •     | 1.00 lbs  | 12       |
| 93053076    | CU2B           | 782520867072 | Black Hosuing                  | •     | •     |       |       |       | 1.00 lbs  | 12       |
| 93043108    | CU2RC          | 856143001493 | White Housing, Remote Capacity | •     | •     | •     | •     | •     | 1.00 lbs. | 12       |
| 93053077    | CU2RCB         | 782520867089 | Black Housing, Remote Capacity | •     | •     |       |       |       | 1.00 lbs  | 12       |



tradeSELECT

### CIR Series

- Indoor LED Remote Heads
- Remote Heads Powered From CU, CE or CC Only

| Part Number | Catalog Number | UPC Code     | Description                         | CA 03 | GA 27 | IL 06 | NJ 12 | TX 04 | Wt. each | Ctn. Qty |
|-------------|----------------|--------------|-------------------------------------|-------|-------|-------|-------|-------|----------|----------|
| 93043126    | CIRS           | 856143001509 | LED Single Head with Mounting Plate | •     | •     | •     | •     |       | 1.00 lbs | 20       |
| 93043127    | CIRD           | 856143001516 | LED Double Head with Mounting Plate |       | •     |       | •     |       | 1.20 lbs | 12       |



tradeSELECT

### COR Series

- Outdoor LED Remote Heads
- Remote Heads Powered From CU, CE or CC Only

| Part Number | Catalog Number | UPC Code     | Description                    | CA 03 | GA 27 | IL 06 | NJ 12 | TX 04 | Wt. each | Ctn. Qty |
|-------------|----------------|--------------|--------------------------------|-------|-------|-------|-------|-------|----------|----------|
| 93043128    | CORS           | 856143001523 | Outdoor LED Single Head Remote | •     | •     | •     | •     | •     | 1.00 lbs | 20       |
| 93043129    | CORD           | 856143001530 | Outdoor LED Double Head Remote | •     | •     | •     | •     | •     | 1.20 lbs | 12       |



tradeSELECT

### CSWEU2 Series

- 120/277 VAC
- Dual Adjustable Heads
- Wet Location Listed

| Part Number | Catalog Number | UPC Code     | Description                                      | CA 03 | GA 27 | IL 06 | NJ 12 | TX 04 | Wt. each  | Ctn. Qty |
|-------------|----------------|--------------|--|-------|-------|-------|-------|-------|-----------|----------|
| CSWEU2      | CSWEU2         | 856143001394 | 6V 14W, White Housing, Clear Polycarbonate Cover | •     | •     |       |       |       | 5.00 lbs. | 6        |



tradeSELECT

### CSWEU2LED Series

- Fully Adjustable LED Lamps
- Wet Location Listed
- 120/277 VAC
- NiCad Battery

| Part Number | Catalog Number | UPC Code     | Description                 | CA 03 | GA 27 | IL 06 | NJ 12 | TX 04 | Wt. each  | Ctn. Qty |
|-------------|----------------|--------------|-----------------------------|-------|-------|-------|-------|-------|-----------|----------|
| 93081861    | CSWEU2LED      | 856143002247 | White Housing, Clear Shield | •     | •     | •     | •     |       | 2.50 lbs. | 6        |



## CU2W Series

- 120/277 VAC
- 9.6VDC NiCad Battery
- Grey or Black Housing

tradeSELECT®

| Part Number | Catalog Number | UPC Code     | Description   | CA 03 | GA 27 | IL 06 | NJ 12 | TX 04 | Wt. each  | Ctn. Qty |
|-------------|----------------|--------------|---|-------|-------|-------|-------|-------|-----------|----------|
| 93047780    | CU2WG          | 856143001622 | 2 Head Adjustable Wet Location LED Emergency Light, Grey Housing  | •     | •     | •     | •     | •     | 7.50 lbs. | 4        |
| 93047781    | CU2WB          | 856143001639 | 2 Head Adjustable Wet Location LED Emergency Light, Black Housing | •     | •     |       |       |       | 7.50 lbs. | 4        |



## CWR Series

- Matching Outdoor Remotes for use with CU2W
- Remote Heads Powered From CU2W Only

tradeSELECT®

| Part Number | Catalog Number | UPC Code     | Description   | CA 03 | GA 27 | IL 06 | NJ 12 | TX 04 | Wt. each  | Ctn. Qty |
|-------------|----------------|--------------|---|-------|-------|-------|-------|-------|-----------|----------|
| 93048687    | CWRS           | 856143001776 | Outdoor LED Single Head, Grey Finish, with Mounting Plate | •     | •     |       |       |       | 2.00 lbs. | 12       |
| 93048688    | CWRD           | 856143001769 | Outdoor LED Double Head, Grey Finish, with Mounting Plate |       | •     | •     |       |       | 3.00 lbs. | 12       |



## CJB Series

- J-Box Mounted Emergency Light
- Passive Infra-Red Sensor
- Provides 90 minutes of emergency lighting

tradeSELECT®

| Part Number | Catalog Number | UPC Code     | Description                                   | CA 03 | GA 27 | IL 06 | NJ 12 | TX 04 | Wt. each | Ctn. Qty |
|-------------|----------------|--------------|---|-------|-------|-------|-------|-------|----------|----------|
| 93065066    | CJBLWE         | 856143001912 | Low level, white finish with battery          | •     | •     | •     | •     |       | 1.00 lb. | 12       |
| 93065067    | CJBLWEP        | 856143001929 | Low level, white finish, battery, PIR sensor  | •     | •     | •     | •     |       | 1.00 lb  | 12       |
| 93065068    | CJBLBE         | 856143001936 | Low level, black finish with battery          | •     | •     |       |       |       | 1.00 lb. | 12       |
| 93065069    | CJBLBEP        | 856143001943 | Low level, black finish, battery, PIR sensor  | •     | •     |       |       |       | 1.00 lb. | 12       |
| 93065070    | CJBWE          | 856143001950 | Adjustable angle, white finish with battery   | •     | •     | •     | •     |       | 1.00 lb. | 12       |
| 93065071    | CJBWEP         | 856143001967 | Adj. angle, white finish, battery, PIR sensor | •     | •     | •     | •     |       | 1.00 lb. | 12       |
| 93065072    | CJBBE          | 856143001974 | Adjustable angle, black finish with battery   | •     | •     |       |       |       | 1.00 lb. | 12       |
| 93065073    | CJBEBEP        | 856143001981 | Adj. angle, black finish, battery, PIR sensor | •     | •     |       |       |       | 1.00 lb. | 12       |

