

Arceōs™ AREA/SITE LUMINAIRE

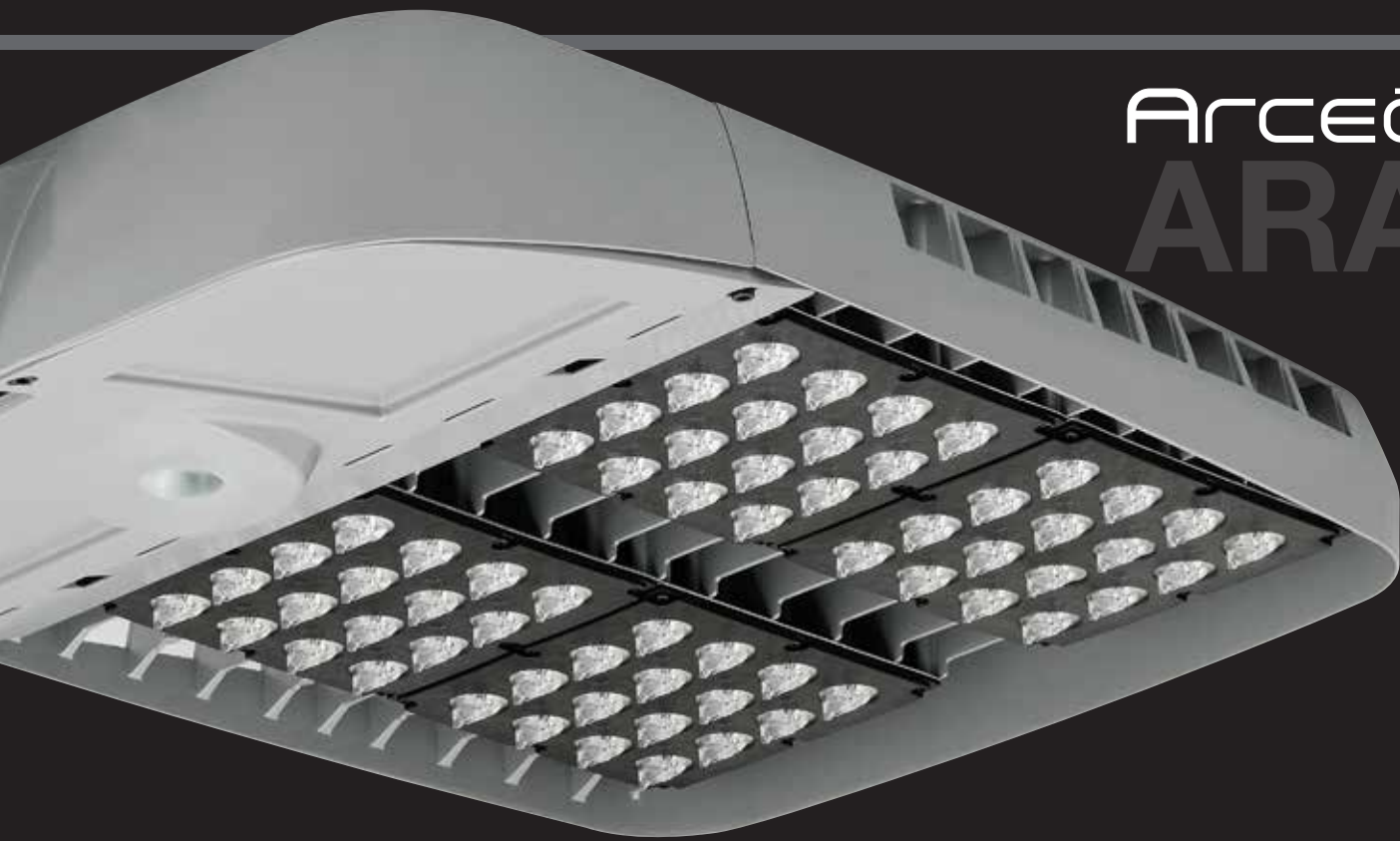


ARA3

**HUBBELL**  
Outdoor Lighting



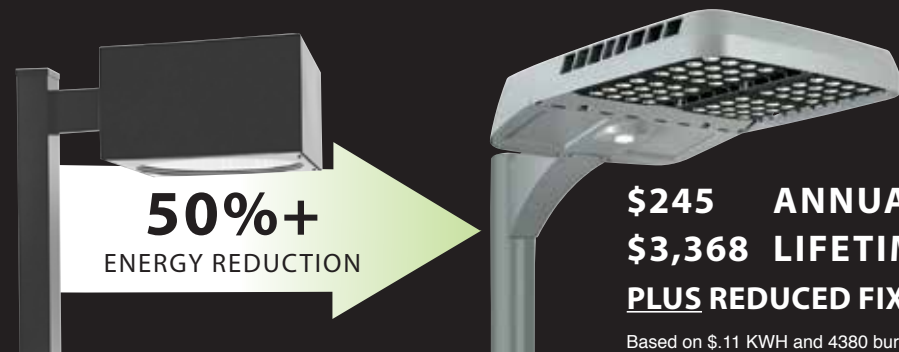
**HUBBELL**  
Lighting



# ARCEOS™ ARA3

Hubbell Lighting's high performance Arceos™ ARA3 area/site luminaire is the culmination of energy-efficient LED lighting in a sleek low profile design. The ARA3 features the latest LED technology, thermal management and controls, while providing excellent lighting and uniformity for large area/site applications. Designed for mounting heights of up to 50 ft. the Arceos™ ARA3 provides the ultimate performance and lighting capabilities.

- 1,000w HID replacement with over 50% energy savings
- Large area – high mounting applications
- Three lumen options for design flexibility
- Backlight control to reduce light trespass
- Precision optics
- Field aimable distributions
- Control options
- Modular design to simplify installation



**50%+**  
ENERGY REDUCTION

**\$245 ANNUAL SAVINGS** (per fixture)  
**\$3,368 LIFETIME SAVINGS** (per fixture)  
**PLUS REDUCED FIXTURE/POLE COUNT & ENERGY SAVINGS**

Based on \$.11 KWH and 4380 burn hours annually

## AUTO DEALERSHIPS

The Arceos™ ARA3 creates an inviting environment for customers, while keeping them safe during their shopping experience. As each area of a dealership has a different flow of traffic, it is important to implement the right lighting in the right locations. Doing so will protect the vehicle inventory, facility and service area.



## LARGE PARKING AREAS

Convention centers, college campuses, stadium/ arena, amusement parks, and municipal areas all present large lighting area parking challenges. The proper design and effective lighting of these large parking areas provide a welcoming environment while minimizing property crimes and safety concerns.



## TRANSPORTATION/PORTS

As transit agencies continue to seek effective means to increase ridership and improve the image of public transportation, the safety and security provided by area lighting are critical considerations for patrons, transit agencies, and the communities they serve.



## RETAIL/MALLS

Safety and security are of utmost importance for large mall and mixed-use retail, restaurants, and commercial office space. Increased lighting levels provide overall customer and employee safety as well as making the shopping area more inviting. Lighting provides peace of mind for patrons and owner/operators of these areas.



# ARCEOS™ ARA3

Sleek, low profile for new construction or retrofit

Efficacy up to 90 lumens per watt

Optimized optics in four distributions  
Type III, Type IV, Type V and front row Automobile

Seven standard finishes: Dark Bronze, Black, Gray,  
White, Platinum, Red and Forest Green

Universal voltage (120-277V), 50/60 Hz, 347/480V

Surge and thermal protection standard

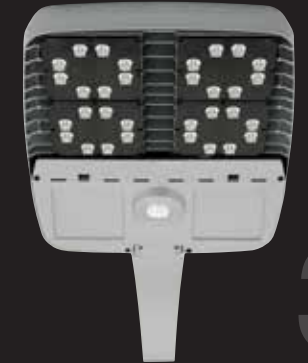
Photocontrol option available

Ventilated housing design for cool  
operation and long component life

IP65 rated optics and driver enclosure

Motion sensor and wireless control options  
available for additional energy savings

## OPTICAL CONFIGURATIONS



32

- Up to 30 ft mounting heights
- 32 LEDs
- Up to 26,000 lumens, 293w



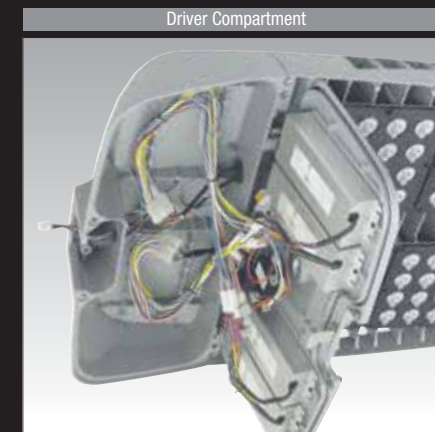
48

- 30-40 ft mounting heights
- 48 LEDs
- Up to 40,000 lumens, 435w



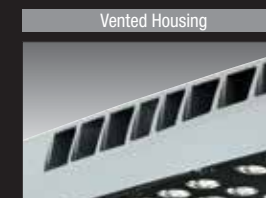
64

- Up to 50 ft mounting heights
- 64 LEDs
- Up to 53,000 lumens, 580w



Driver Compartment

Separate electrical compartment for isolation of drivers features quick-connect wiring; Gasketed and removable door with dual hinge design and safety release tab for serviceability and installation ease



Vented Housing

Vertical internally finned cast aluminum housing for maximum heat dissipation, ensuring long component life and luminaire performance



Modular Design/Adjustable Mounting Arm

Unique three piece arm/fixture design with captive hardware allows "one person" installation (See page 8-9)

Arm features dual top mounting hole and slot allow for re-purposing of existing poles (See page 10)



High Performance Optics

Optical array easily rotated for field aiming provides mechanical compression to seal the LEDs, lenses and optical assembly have IP65 rating



Control Options

Motion sensor control options for additional energy savings or wiSCAPE wireless system for On/Off and 0-10VDC full range dimming control, programmable autonomous operation



**TIR OPTIC TECHNOLOGY**

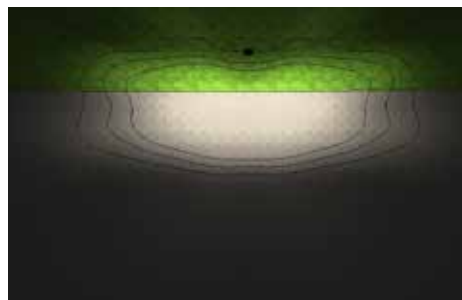
Total Internal Reflectance (TIR) optic technology provides superior optical control to deliver exceptional light level uniformity, reduced light trespass and allows the lighting designer to illuminate the task in the most efficient manner possible. Design flexibility is optimized with 32, 48 and 64 high brightness LED light engine configurations in IES Type III, Type IV, Type V plus front row Automobile distribution.



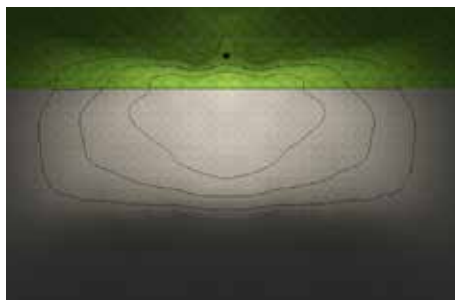
**ROTATABLE OPTICS**

All distributions are field or factory aimed for maximum design flexibility. The bezel includes a raised arrow to indicate the direction of illumination.

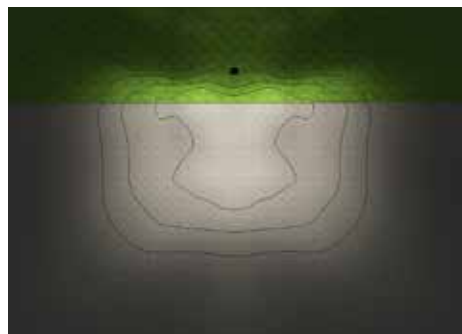
**DISTRIBUTIONS**



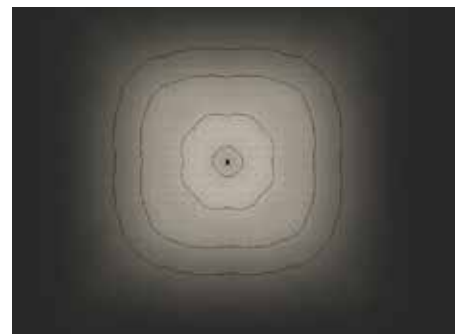
Front Row Automobile



Type III



Type IV



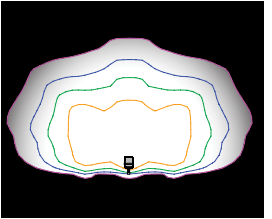
Type V

**BACKLIGHT CONTROL**

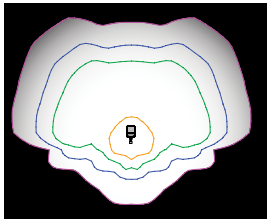
For those LED projects that require minimal light behind the pole, Spaulding Lighting has the solution – Backlight Control. This unique system, designed specifically for LED lighting, will reduce the light spill behind the pole.

- 85% light reduction behind the pole – industry leading performance
- No change to fixture appearance or EPA
- Achieves impressive Backlight-Uplight-Glare (BUG) rating
- Neighbor-friendly lighting

Type IV with Backlight Control



Type IV without Backlight Control



**AUTOMOBILE DEALERSHIP OPTICS**

For Automobile Dealership applications the Arceos™ is available with optics designed for enhanced and proper lighting of the auto dealership merchandise on the front row.

The ARA3 high lumen package combined with Spaulding's front row automobile optic maximizes the dealers product merchandising impact. Create dramatic impact on a dealerships lighting and sales revenue with the Arceos™ ARA3 luminaire.

**Front Row Automobile Optic Benefits**

- Maximum illumination on front row display
- Maximum pole spacing
- Reduced acquisition and ownership costs

Front Row Automobile Optic

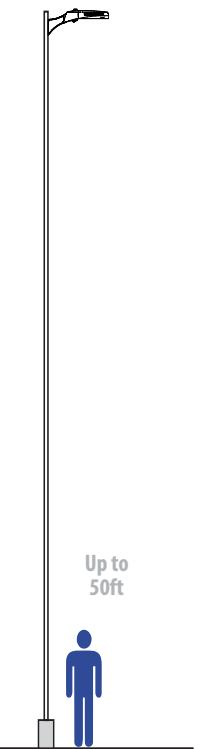


**MOUNTING HEIGHTS**

Arceos™ ARA3 is designed for area/site lighting applications including auto dealerships, retail and large parking areas. Typical mounting heights are from 20-50ft.

**Higher Luminaire Mounting Height Benefits**

- Broader luminaire and pole spacing
- Fewer poles and luminaires
  - Easier installation
  - Less maintenance
- Superior uniformity for improved visual acuity
- Less glare
- Fewer obstruction and more parking spots

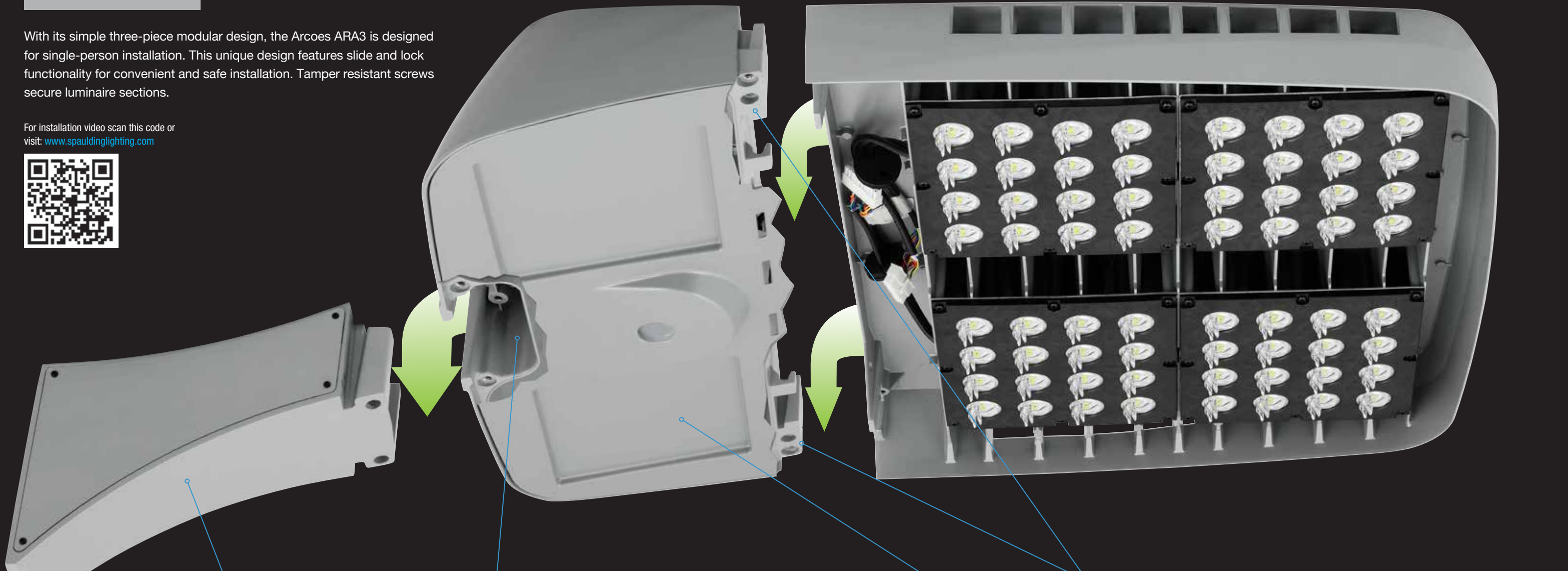


1 - Based on IES RP-20-4 Illuminance Recommendations for Parking Lots

**MODULAR DESIGN**

With its simple three-piece modular design, the Arcoes ARA3 is designed for single-person installation. This unique design features slide and lock functionality for convenient and safe installation. Tamper resistant screws secure luminaire sections.

For installation video scan this code or visit: [www.spauldinglighting.com](http://www.spauldinglighting.com)



Architectural Arm

Architectural sweeping arm features access for easy pole mounting and wiring. Arm door plate features tamper proof hardware and sealed/ gasketed for long life and easy access to ARA3's surge protection and optional terminal block and fusing



Quick-Connect Wiring

Quick-connect wiring provided for simple electrical connection



Driver & Light Engine Compartment Door

Driver compartment features door mounted components and a removable hinged door for easy wiring and serviceability



Captive Hardware



Fully Assembled Arcoes™ ARA3

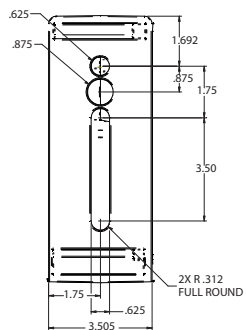
Completed assembly – Arcoes™ ARA3 luminaire

**UNIVERSAL MOUNTING ARM HOLE PATTERN**

ARA3 arms incorporate hole pattern provisions for most major luminaire manufacturers providing retrofit solutions to existing poles. Two bolt patterns ranging from 1.75" to 5.25" are accommodated. Arms are acceptable for 90° configurations.



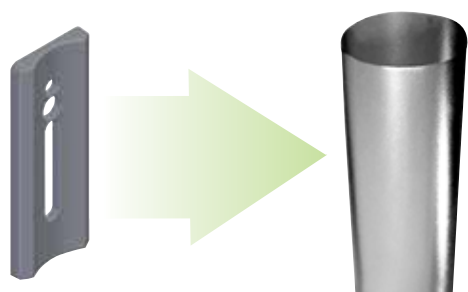
**DIMENSIONS**



Utilize Spaulding's #2 hole pattern when ordering poles

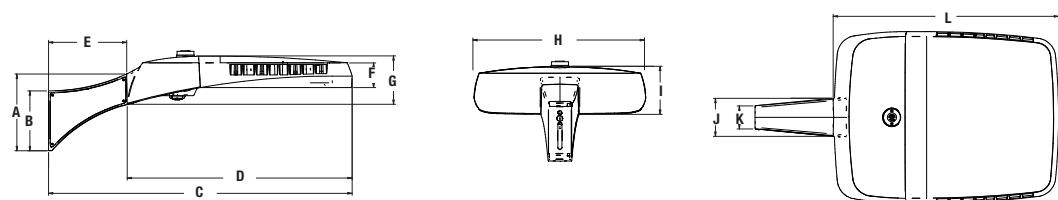
**POLE ACCESSORIES**

Round Pole adapters are available for 2, 3, 4, 4.5, 5, and 6 inch diameter round poles.



RPA – Round Pole Adapter

**DIMENSIONS**



A	B	C	D	E	F
11.62" 295mm	9.06" 230mm	46.00" 1168mm	34.07" 863mm	11.86" 301mm	3.74" 95mm

G	H	I	J	K	L
7.28" 184mm	26.00" 660mm	7.28" 184mm	5.74" 145mm	3.47" 88mm	34.07" 863mm

Arm	Driver Enclosure	LED Array	Total Weight	EPA
8.8 lbs. 3.9 kgs.	29.75 lbs. 13.5 kgs.	37.25 lbs. 16.9 kgs.	75.8 lbs. 34 kgs.	1.4

**ORDERING INFORMATION – ORDERING EXAMPLE: ARA3-A-64L5K-070-4-U-DB**

SERIES	MOUNTING	NO. OF LEDS	LED COLOR	IES DISTRIBUTION	VOLTAGE	FINISH	STANDARD OPTIONS
<b>ARA<sup>1</sup></b> Arceos™ large area/site luminaire	<b>A</b> Arm (universal) <b>MAF</b> Mast Arm Fitter for 2-3/8" horizontal arms or vertical tenons. Tilt options of 5° and 10° included in arm.	<b>64L</b> 64 LEDs <b>48L</b> 48 LEDs <b>32L</b> 32 LEDs	<b>3K</b> 3000K, 80 CRI <b>4K</b> 4000K, 70 CRI <b>5K</b> 5000K, 70 CRI	<b>1A</b> Auto Front Row Type I <b>1AL</b> Auto Front Row Type I Rotated 90° left <b>1AR</b> Auto Front Row Type I Rotated 90° right <b>3</b> Type III <b>3L</b> Type III rotated 90° left <b>3R</b> Type III rotated 90° right <b>4</b> Type IV <b>4L</b> Type IV rotated 90° left <b>4R</b> Type IV rotated 90° right <b>5S</b> Type V Short <b>5W</b> Type V Wide	<b>U</b> 120V-277V 50/60Hz <b>1</b> 120V <b>2</b> 208V <b>3</b> 240V <b>4</b> 277V <b>5</b> 480V, 50/60Hz <b>F</b> 347V, 50/60Hz <b>E</b> 220V, 50/60Hz	<b>DB</b> Bronze <b>BL</b> Black <b>WH</b> White <b>PS</b> Platinum Silver <b>GR</b> Gray <b>CC</b> Custom Colors (Consult factory)	<b>BC<sup>7</sup></b> Blacklight control (see page 4) <b>TB</b> Terminal block <b>RPA(X)</b> Round pole adapter (Replace X with 2, 3, 4, 4.5, 5 or 6 indicating pole diameter) <b>F(X)</b> Fusing (must specify discrete voltage) <b>7PR</b> Photocell receptacle (7-pin ANSI C136.41—2013 receptacle for use with standard Twist-Lock® photo controls, shorting caps, and ANSI C136.41 external wireless control devices. Select SCL option to add occupancy sensing capability when using with compatible external wireless devices)
				<b>DRIVE CURRENT</b> <b>070</b> 700mA			
				<b>SIZE</b> <b>3</b> Large			

- Notes: 1 - Order poles with #2 hole pattern  
2 - Not available with 480V  
3 - Not available with 347V or 480V  
4 - Not available with WIR or WIRSC  
5 - Not available with SCO, SCL, SCP or SCPW  
6 - 0-10V fully adjustable dimming with automatic daylight calibration and different time delay settings, must order minimum of one SCP-REMOTE control to program dimming settings (see accessories)  
7 - Not recommended for Type V distributions  
8 - Not available with other Occupancy or Wireless Control Options  
9 - Not available with 208, 240, or 480V

**CONTROLS**

As energy codes become more restrictive and we push for sustainable lighting designs, the integration of lighting controls and luminaires have become more and more important. Hubbell Lighting offers numerous outdoor lighting controls solutions for the most demanding applications. Visit the link below to learn more about energy-saving controls.

[www.hubbellighting.com/solutions/controls/](http://www.hubbellighting.com/solutions/controls/)

For the most up-to-date product information, mounting, accessories, and photocontrols visit:

[www.spauldinglighting.com](http://www.spauldinglighting.com)

**LEKTROCOTE® FINISH PROCESS**

Lektrocote® is a proprietary process where the thermosetting, acid-functional polyester powder resin is electrostatically applied only after a thorough cleaning process. Luminaires receive a five-step wash with both acid and alkaline-based liquid cleaners followed by the deposit of a thin layer of proprietary compound to promote maximum corrosion-resistance and paint adhesion. Finally, the decorative finish coat is applied.

Lektrocote® meets or exceeds the following standards:

**ASTM B-117** 1000 hour salt spray test

**ASTM B-2247** 1000 hour humidity test

**ASTM D-2794** Impact test resistant to 160 inch pounds

**ASTM D-522** Flexibility test

**AAMA 603** Blister/adhesion test

**ACCESSORIES AND SERVICES (ORDERED SEPARATELY)**

Catalog Number	Description
<b>SWUSB*</b>	SiteSync loaded on USB flash drive (Windows based only)
<b>SWTAB*</b>	SiteSync Windows Tablet
<b>SWBRG*</b>	SiteSync Wireless Bridge Node

\* When ordering with SiteSync, one of the following interface options must be chosen and ordered separately. Each option contains the SiteSync License, GUI and Bridge Node.

+ If needed, an additional Bridge Node can be ordered.

**PIR MOTION/OCCUPANCY CONTROL OPTIONS**

**SCO<sup>3,4</sup>** On/Off control (line voltage device not for use with 7PR receptacle option and external wireless control devices)

**SCL<sup>3,4</sup>** Add-on occupancy sensor for use with ext. wireless control device connected thru 7PR receptacle. Consult control manufacturer for compatibility

**SCP<sup>3,4,6</sup>** Programmable dimming control (line voltage device not for use with 7PR receptacle option and external wireless control devices). A minimum of one SCP-REMOTE accessory remote control required for configuration; (Standard lens with greater sensitivity; motion detection radius equal to .75 X luminaire mounting height (approx. distance))

**SCPW<sup>3,4,6</sup>** Programmable dimming control (line voltage device not for use with 7PR receptacle option and external wireless control devices); A minimum of one SCP-REMOTE accessory remote control required for configuration. (Wide lens with motion detection radius equal to 1.3 X luminaire mounting height (approx. distance))

**SWP<sup>2,4,5,8,9</sup>** SiteSync pre-commissioned

**SWPM<sup>2,4,5,8,9</sup>** SiteSync pre-commissioned w/ occupancy sensor

**WIRELESS CONTROL OPTIONS**

**WIR<sup>2</sup>** wISCAPE Fixture Module, in-fixture relay for wireless lighting control

**WIRSC<sup>3,5</sup>** wISCAPE Fixture Module, in-fixture relay for wireless lighting control and motion/occupancy control

**COLOR SELECTIONS**

- 5 standard (Bronze, Black, White, Gray, Platinum Silver)
- Custom Colors (consult factory) are available



Note: • Actual colors may vary due to printing process  
• All colors are textured except Platinum Silver



United States  
Hubbell Lighting, Inc.  
701 Millennium Boulevard  
Greenville, SC 29607  
[www.hubbellighting.com](http://www.hubbellighting.com)

Canada  
Hubbell Canada  
870 Brock Road  
Pickering, Ontario L1W 1Z8  
[www.hubbell-canada.com](http://www.hubbell-canada.com)

Mexico  
Hubbell De Mexico, S.A. DE CV  
Av. Insurgentes Sur # 1228, 8th Floor  
Col. Tlacoquemecatl del Valle • 03200 Mexico, D.F.  
[www.hubbell.com.mx](http://www.hubbell.com.mx)

ALERA LIGHTING

ARCHITECTURAL AREA LIGHTING

BEACON PRODUCTS

COLUMBIA LIGHTING

COMPASS PRODUCTS

DEVINE LIGHTING

DUAL-LITE

HUBBELL BUILDING AUTOMATION

HUBBELL INDUSTRIAL LIGHTING

HUBBELL OUTDOOR LIGHTING

KIM LIGHTING

KURT VERSEN

LITECONTROL

PRESCOLITE

PROGRESS LIGHTING

SPAULDING LIGHTING

STERNER LIGHTING SYSTEMS

WHITEWAY

