

Residential Metering

I-210+c

Precision & Reliability with Flexibility



KEY FEATURES

- Advanced metering solution
- Industry-proven
- Cost efficient
- Adaptable to fit complex needs
- Robust design and testing
- Bi-directional demand meter
- Diverse integrated AMI options

Aclara's I-210+c residential meter continues the tradition to bring innovative technology solutions to cover all your metering requirements. From basic energy-only metering to highly flexible sensor solutions, this flagship meter provides all functionality required to meet utilities' evolving needs.

This advanced, powerful, and easy-to-use meter will deliver the real-time instrumentation, power quality monitoring, and easy access to critical information you require - right at the edge of your network - to gain visibility and improve service. The I-210+c will help you achieve higher operational effectiveness, improved network efficiency, and reduced energy costs.

Visit us at aclara.com

Aclara 

I-210+c

ADVANCED CONFIGURATION

- Configurable options for specific data needs and complex rate requirements
- Optional advanced functions available when shipped or field installed, such as:
 - Include reactive power measurement for power factor rate applications
 - Install power quality and event logging for specific case investigations.
- Remote disconnect to improve operational efficiency and adds options like:
 - Demand side management
 - Remote prepayment systems
 - Controlled outage restoration
- Tamper detection tools that shows:
 - Errors
 - Wiring changes
 - Tampering
 - Billing issues

RELIABILITY

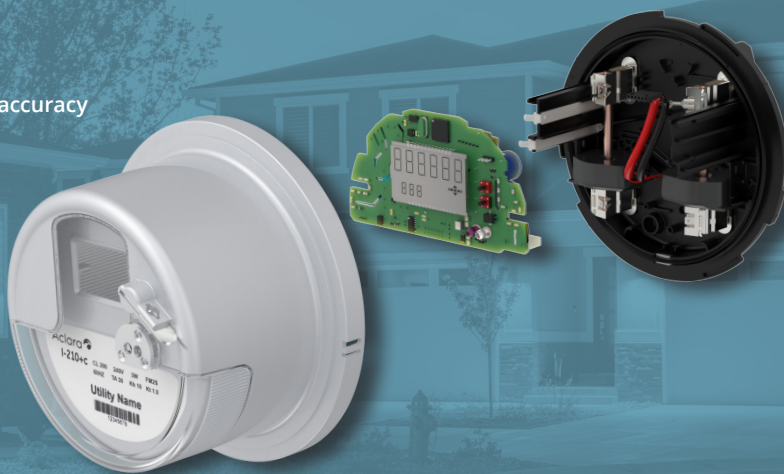
- Over 130 years of experience designing and building high-quality, accurate, and reliable meters
- Accelerated life testing assures reliability over the life of the meter
- Industry leading software suite, MeterMate™, eases configuration effort and increases diagnostic details for lower operational costs

COMMUNICATIONS

- Broad advanced metering infrastructure (AMI) options including:
 - Radio frequency point-to-multipoint
 - Power line communications
 - Cellular communications
 - Radio frequency mesh (RF mesh)
- Rigorous validation of AMI integration to ensure reliability and control cost of ownership

Specifications

Available Forms	CL20: 3S, 3CS, 4S CL100: 1S (RD Available) CL200: 2S, 12S, 25S (RD Available) CL320: 2S, 12S, 25S (RD Available)
Display	Supports 6 characters Up to 75 displayable items Modes: Normal, Alternate, Test 3 Character Display Label
Accuracy	Exceeds +/- 0.5% certified class accuracy Typically within +/- 0.2%
Voltage	120V, 240V
Frequency	50Hz, 60Hz
Temperature	-40°C to 85°C <95% relative humidity
Standards	ANSI C12.1 ANSI C12.10 ANSI C 12.19 ANSI C12.20 ANSI C37.90.1 UL2735 FCC Class B



Learn More

Visit us at Aclara.com, phone 800 297 2728 or contact us at AclaraInfo@hubbell.com.