

HUBBELL®
Power Systems

Fiberglass Crossarms

The support you need from the name you trust.

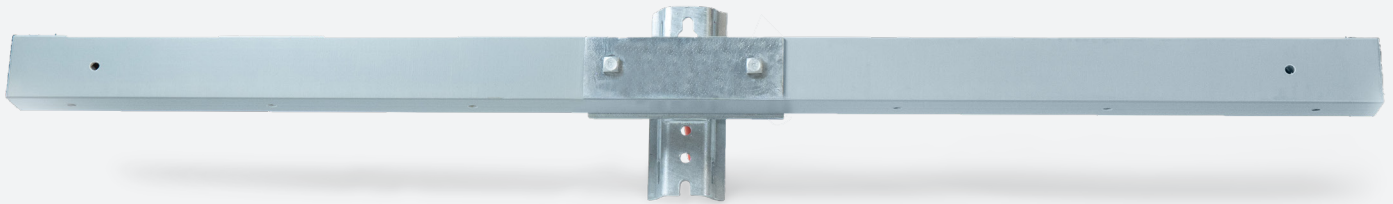
Manufactured in-house using a tried-and-true pultrusion process, Fiberglass Crossarms are the latest addition to an extensive line of trusted utility solutions from Hubbell®.

The Cost-Effective, Long-Term Solution

Lighter and stronger than traditional wood crossarms, fiberglass crossarms are easier to install and last longer. Our durable, UV-resistant composite material greatly extends the product's service life, making it a better long-term solution for utilities. Available in both tangent and dead-end styles, our fiberglass composite crossarms provide the strength and support you need without the weight or extensive maintenance associated with wood crossarms.

Our composite crossarms are manufactured in-house at the Hubbell facility in Centralia, Missouri, using the same pultrusion process as our other high-quality products. We rigorously test crossarms to provide strength ratings you can trust. And our large-scale domestic manufacturing capabilities allow us to provide short lead times. We also offer freight consolidation with your other Hubbell product orders, which helps reduce overall shipping costs.





Resist fire, rot, and insect damage with Fiberglass Crossarms



Durable

Expect long-lasting performance with fiberglass crossarms that resist UV degradation, fire, rot, and insect damage.



Easy to Install

Simplify installation with lightweight composite crossarms that feature a center-mounted, brace-less design.



Multiple Styles

Choose from tangent and deadend styles in various standard lengths as well as custom sizes for your specific application.



Adaptable

The mounting bracket has multiple size bolt holes and a keyhole slot. Deadend styles also include double guy-mounting holes.



Hubbell Advantage

Manufactured in-house at our Centralia, Missouri facility using a tried-and-true pultrusion process and strength tested for quality assurance. Freight consolidation is available for customers ordering multiple Hubbell products.

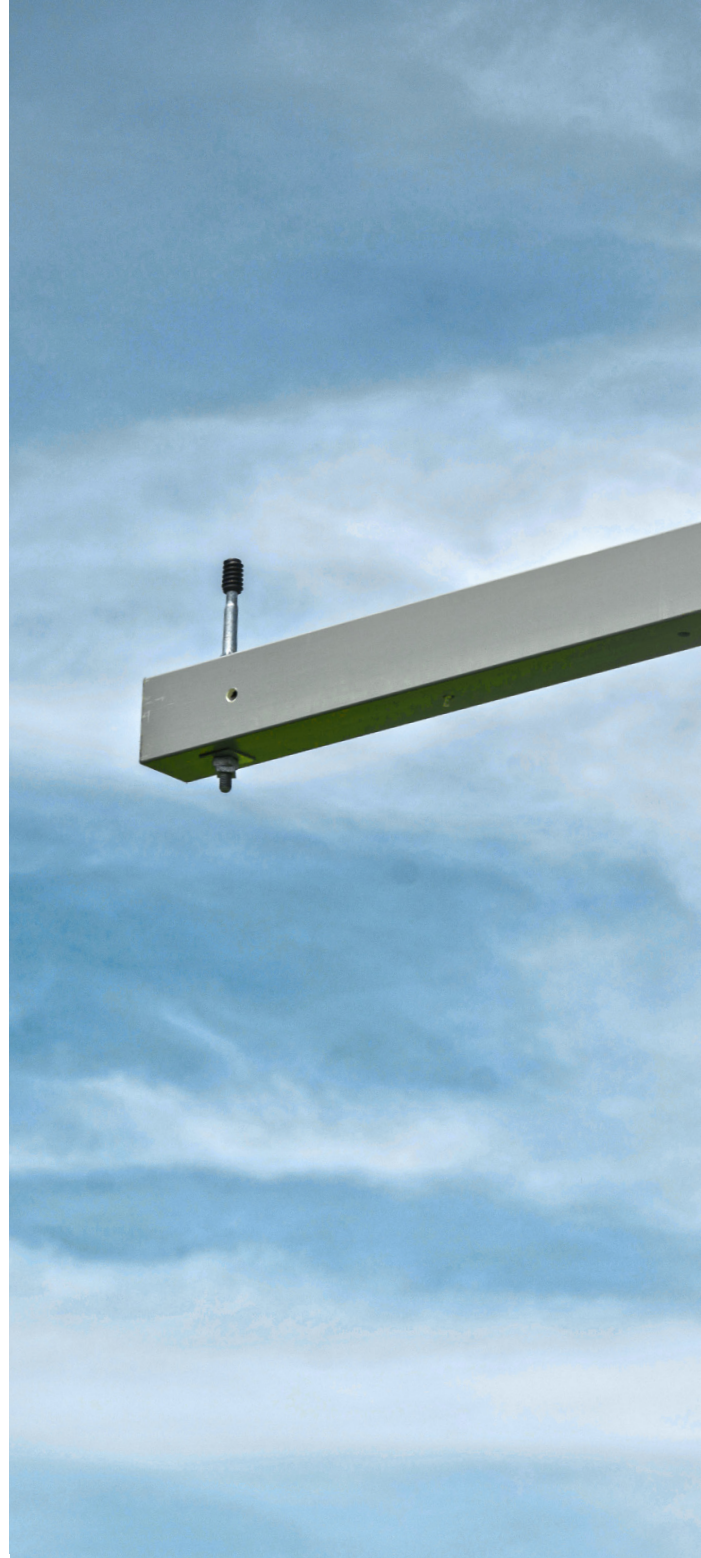


Strong

Welded construction and a galvanized mounting bracket offer solid foundational support, and a stamped steel galvanized square washer design helps evenly distribute the load.

Hubbell crossarms are backed by more than 60 years of pultrusion manufacturing excellence

The Hubbell manufacturing facility in Centralia, Missouri has been pultruding composite live-line tools since the 1960s. Our tried-and-true pultrusion process continuously pulls fiberglass strands and multi-axial mats through resin and into a heated die to form a solid composite profile for our crossarms. The composite material and pultrusion process combine to create a strong and lightweight end product. Additives in the resin formulation and surfacing cloth are also an integral part of the pultrusion process. When paired with an exterior coat of specially formulated paint, they form a stable UV and flame-retardant material. The crossarm is then filled with foam, drilled, and sleeve-installed to minimize moisture egress and provide additional mechanical support for attachment hardware.



A Hubbell brand