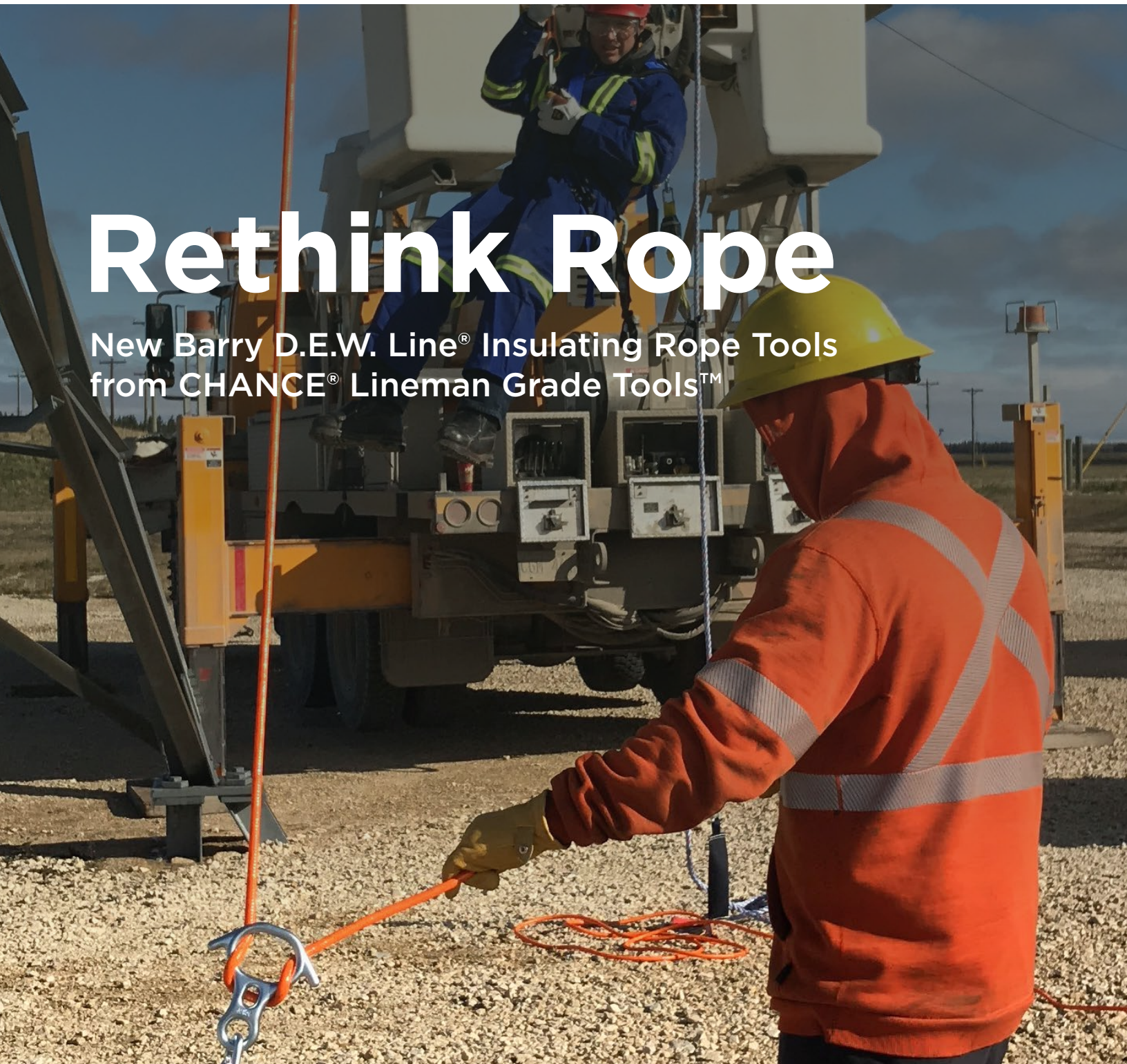




Rethink Rope

New Barry D.E.W. Line® Insulating Rope Tools
from CHANCE® Lineman Grade Tools™





Warning: Hazards of common rope in hot line work

Common rope products are often used in Electrical Utility work, but in Live-Line Maintenance common rope can be a hazard.

While a brand-new rope may have some dielectric properties, moisture, dust, dirt, and other contaminants start compromising the rope as soon as it begins use in the field.

This would be less concerning if the rope could be thoroughly inspected, cleaned, and tested between uses, but that is not possible on open bundles of fibers woven together.

Internal damage and contaminants are easily hidden from inspection, cleaning cannot get deep between fibers, and moisture is very difficult to thoroughly remove.

These factors can cause flashovers resulting in a catastrophic failure of the rope, as well as electrical tracking, giving the system voltage a deadly path to ground.

This is why most rope manufacturers insist their products are not insulating. Barry D.E.W. Line® Insulating Rope Tools provide answers for ALL these issues.

Common rope issues

- Traps moisture, dust, and contaminants
- Difficult to inspect
- Can't be cleaned
- Difficult to test
- Easily compromised by flashover heat
- Not insulating

It's time to rethink rope

Because all Barry D.E.W. Line® products are fixed-length tools with full-length jackets and sealed terminations, moisture cannot penetrate the tools and can be wiped dry from the surface.

Dirt and contaminants are easily detectable and cleaned away with standard Hotstick cleaning wipes. All Barry D.E.W. Line® tools are also Category 4 Arc-Flash Rated, resistant to 40 calories per square centimeter (cal/cm²),* providing excellent resistance to flashover heat.

With insulating properties that meet or exceed ASTM F1701 and IEC 62192, these tools can be tested for dielectric effectiveness in the field with the same equipment used for testing CHANCE Hotsticks.

Barry D.E.W. Line® insulating rope tools

- ✓ Sealed: moisture, dust, and contaminants cannot penetrate
- ✓ Easy to inspect
- ✓ Easily wiped clean and dry
- ✓ Can test like a hotstick
- ✓ Resistant to flashover heat
- ✓ Exceptional insulating properties





Barry D.E.W. Line Features and Benefits

- All Barry D.E.W. Line® (Dielectric Even Wet) products meet or exceed the dry and wet electrical requirements of IEC 62192:2009 and ASTM F1701-12
- Arc-Flash Rated Resistant to 40 cal/cm2 (category 4)
- Fully sealed and hydrophobic
- Cleanable! Barry D.E.W. Line® products can be wiped down quickly and easily before use
- Durable and flexible coating reduces abrasions or cuts
- High strength. Low elongation. Lightweight.
- Excellent resistance to UV
- Individually labeled with date and serial number

Featured Products

R1 Retrievable Multipurpose Rescue Kit

Designed as a complete, self-contained, ready to use kit with a retrievable anchor strap and Tag Line to bring components back to the ground without climbing. Can be rigged in three different rescue configurations:

- Self-Rescue with controlled descent
- Lowering a victim from above
- Lowering a victim from below



R2 Multipurpose Rescue Kit

Same as the R1 kit without retrievable anchor strap and Tag Line.



R4 Bucket Truck Rescue Kit

A compact, self-contained, and easily deployed system designed for self-evacuation from energized work positions.



| Part Number | Description | Rope Length† | WLL |
|--------------|---------------------------|-----------------|------------------|
| PSCDEWR1200 | D.E.W. Line R1 Rescue Kit | 200 ft (60.9 m) | 500 lb. (226 kg) |
| PSCDEWR2050 | D.E.W. Line R2 Rescue Kit | 50 ft (15.2 m) | 500 lb. (226 kg) |
| PSCDEWR2150 | D.E.W. Line R2 Rescue Kit | 150 ft (45.7 m) | 500 lb. (226 kg) |
| PSCDEWR40065 | D.E.W. Line R4 Rescue Kit | 65 ft (19.8 m) | 500 lb. (226 kg) |

† Made to order in other lengths by request.

Insulating Rescue Rope

- Featured in the Rescue Kits; also available separately. Great for evacuating workers out of energized environments. Works well in sheaves, pulleys, descenders, and rope grab devices. Also great for general lifting, pulling, rigging, and stringing.
- Similar dielectric properties as CHANCE Epoxiglas™ Hotsticks
 - High-Angle Rescue Rope
 - Sealed sewn termination with plastic thimble at each end
 - Knottable*

Outer Diameter: 15/32in (12 mm)

Core Diameter: 7/16in (11 mm)

Working Load Limit*: 500 lb. (226 kg)

** Reduce working load limit by 50% when using knots.*



(Included in rescue kit but available to order separately)

Rescue Ropes are made to order.
Contact CSR/TM/BU for pricing and availability

Rescue Hoist Kit

- Lifting/hauling system for 4:1 mechanical advantage with braking feature. Can be used for lifting a victim to unhook them from fall protection equipment and other rescue hauling procedures.
- Rated Working Load 500 lb./226.7 kg
 - Standard lengths available with reach between blocks of 6 ft (1.8 m), 30 ft (9.1 m), and 50 ft (15.2m)



| Part Number | Description | Length | Weight | WLL |
|-------------|------------------|--------------|------------------|------------------|
| PSCDEWRH006 | Rescue Hoist Kit | 6 ft (1.8 m) | 10.2 lb (4.6 kg) | 500 lb. (226 kg) |

Insulating Work Rope

Multi-purpose load handling tool with stainless steel thimbles and an easily cleaned, hydrophobic surface. Available in two diameters for different working load limits. Perfect for lifting, rigging, pulling, stringing, and as a dielectric link.

- Similar dielectric properties as CHANCE Epoxiglas™ Hotsticks
- Sealed sewn termination with stainless steel thimble at each end
- An easily cleaned, hydrophobic surface
- Knottable*



| Part Number | Description | Length† | Diameter | WLL* |
|----------------------|-----------------------------|-----------------|-----------------|--------------------|
| PSCDEWNP28050 | D.E.W. Line Work Line | 50 ft (15.2 m) | 1/2 in (13 mm) | 1,260 lb. (571 kg) |
| PSCDEWNP28100 | D.E.W. Line Work Line | 100 ft (30.4 m) | 1/2 in (13 mm) | 1,260 lb. (571 kg) |
| PSCDEWNP28150 | D.E.W. Line Work Line | 150 ft (45.7 m) | 1/2 in (13 mm) | 1,260 lb. (571 kg) |
| PSCDEWNP45100 | D.E.W. Line Heavy Work Line | 100 ft (30.4 m) | 9/16 in (14 mm) | 2,000 lb. (907 kg) |
| PSCDEWNP45150 | D.E.W. Line Heavy Work Line | 150 ft (45.7 m) | 9/16 in (14 mm) | 2,000 lb. (907 kg) |

† Made to order in other lengths by request.

* Reduce working load limit by 50% when using knots.

X-Heavy Work Rope

For live-line transmission work when replacing deadend insulator strings, or for when a heavier working load limit is needed.

- Available with or without rings and/or sheds
- 6 foot (1.8 meter) minimum length
- Custom Stand-Up Bag included



| Part Number | Description | Length† | Diameter | WLL |
|-------------------------|-------------------------------|---------------|----------------|----------------------|
| PSCDEWND16K015 | D.E.W. Line X-Heavy Work Line | 15 ft (4.5 m) | 5/8 in (16 mm) | 5,000 lb. (2,268 kg) |
| PSCDEWND16KR015 | D.E.W. Line X-Heavy Work Line | 15 ft (4.5 m) | 5/8 in (16 mm) | 5,000 lb. (2,268 kg) |
| PSCDEWND16KS015 | D.E.W. Line X-Heavy Work Line | 15 ft (4.5 m) | 5/8 in (16 mm) | 5,000 lb. (2,268 kg) |
| PSCDEWND16KRS015 | D.E.W. Line X-Heavy Work Line | 15 ft (4.5 m) | 5/8 in (16 mm) | 5,000 lb. (2,268 kg) |

Insulating Throw/Drone Line

Designed as an ultra-lightweight leading line for hauling up larger rigging materials. Can be used as a throw line or flown into place on a drone.

- Same material as Tag Line but half the diameter
- Weighs only 0.7lb. (0.3 kg) per 100 ft (30.5 m)
- Bag and Reel included



| Part Number | Description | Length† | Diameter | WLL |
|----------------------|------------------------------|----------------|---------------|------------------|
| PSCDEWNA50300 | D.E.W. Line Throw/Drone Line | 300 ft (91 m) | 1/8 in (3 mm) | 30 lb. (13.6 kg) |
| PSCDEWNA50500 | D.E.W. Line Throw/Drone Line | 500 ft (152 m) | 1/8 in (3 mm) | 30 lb. (13.6 kg) |

† Made to order in other lengths by request.

Insulating Tag Line

Compact and lightweight fixed-length rope tool with stainless steel thimbles, sealed terminations, and an easily cleaned, hydrophobic surface. It's great for hand lines, tagging out conductors, general purpose lifting and pulling, use as a trigger rope, stabilizing loads, and as a dielectric link.

- Similar dielectric properties as CHANCE Epoxiglas™ Hotsticks
- Sealed sewn termination with stainless steel thimble at each end
- Lightweight



| Part Number | Description | Length† | Diameter | WLL |
|----------------------|----------------------|----------------|---------------|-------------------|
| PSCDEWNK10020 | D.E.W. Line Tag Line | 20 ft (6.0 m) | 1/4 in (6 mm) | 200 lb. (90.7 kg) |
| PSCDEWNK10030 | D.E.W. Line Tag Line | 30 ft (9.1 m) | 1/4 in (6 mm) | 200 lb. (90.7 kg) |
| PSCDEWNK10040 | D.E.W. Line Tag Line | 40 ft (12.1 m) | 1/4 in (6 mm) | 200 lb. (90.7 kg) |

† Made to order in other lengths by request.

Insulating Rope Link

Load handling tool for much heavier work. Available in two diameters for different working load limits.

- Spelter Socket termination at each end, choose two open, two closed, or one of each as pictured
- Similar dielectric properties as CHANCE Epoxiglas™ Hotsticks
- Easily cleaned and tested hydrophobic surface



| Part Number | Description | Length | Diameter | WLL |
|----------------|-----------------------------|---------------|-----------------|-----------------------|
| PSCDEWNK19X010 | D.E.W. Line Rope Link | 10 ft (3.0 m) | 7/8 in (22 mm) | 7,000 lb. (3,175 kg) |
| PSCDEWNK38X010 | D.E.W. Line Heavy Rope Link | 10 ft (3.0 m) | 1.25 in (32 mm) | 15,000 lb. (6,803 kg) |

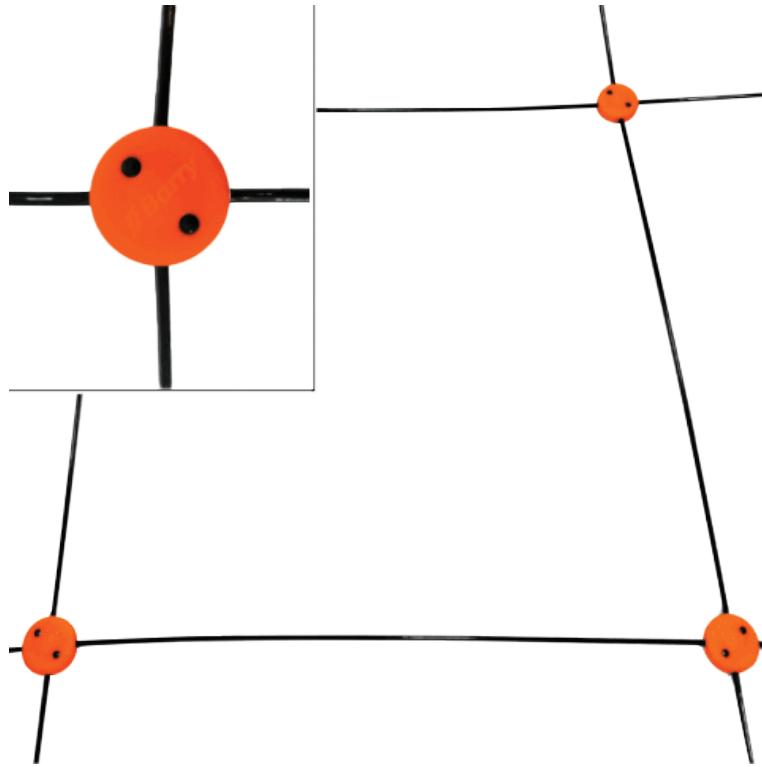
Rope Links are made to order. Contact CSR/TM/BU for pricing and availability



Stand Up Transport Bag

Highly recommended accessory for Rescue Ropes, Work Ropes, and Heavy Work Ropes longer than 50 ft in length. Padded walls keep bag open even when empty. Designed for rope tools to be laid in figure 8 pattern which greatly improves ease of handling by reducing memory retained when coiled. Can hold up to 800 ft long Work Ropes and Rescue Ropes, and up to 700 ft long Heavy Work Ropes.

PSCDEWBZ150LU | Dimensions: 56 x 18 x 12 in (1420 x 450 x 300 mm)



Insulating Safety Net

The BEST way to provide protection against an energized conductor falling into roads, transmission lines, distribution lines, substations, railroad tracks, or other energized components.

- Lightweight, dielectric safety net
- Acts as safety barrier or guard structure
- Can be mounted on various structures
- Often used high over roads and distribution lines while transmission work is performed above

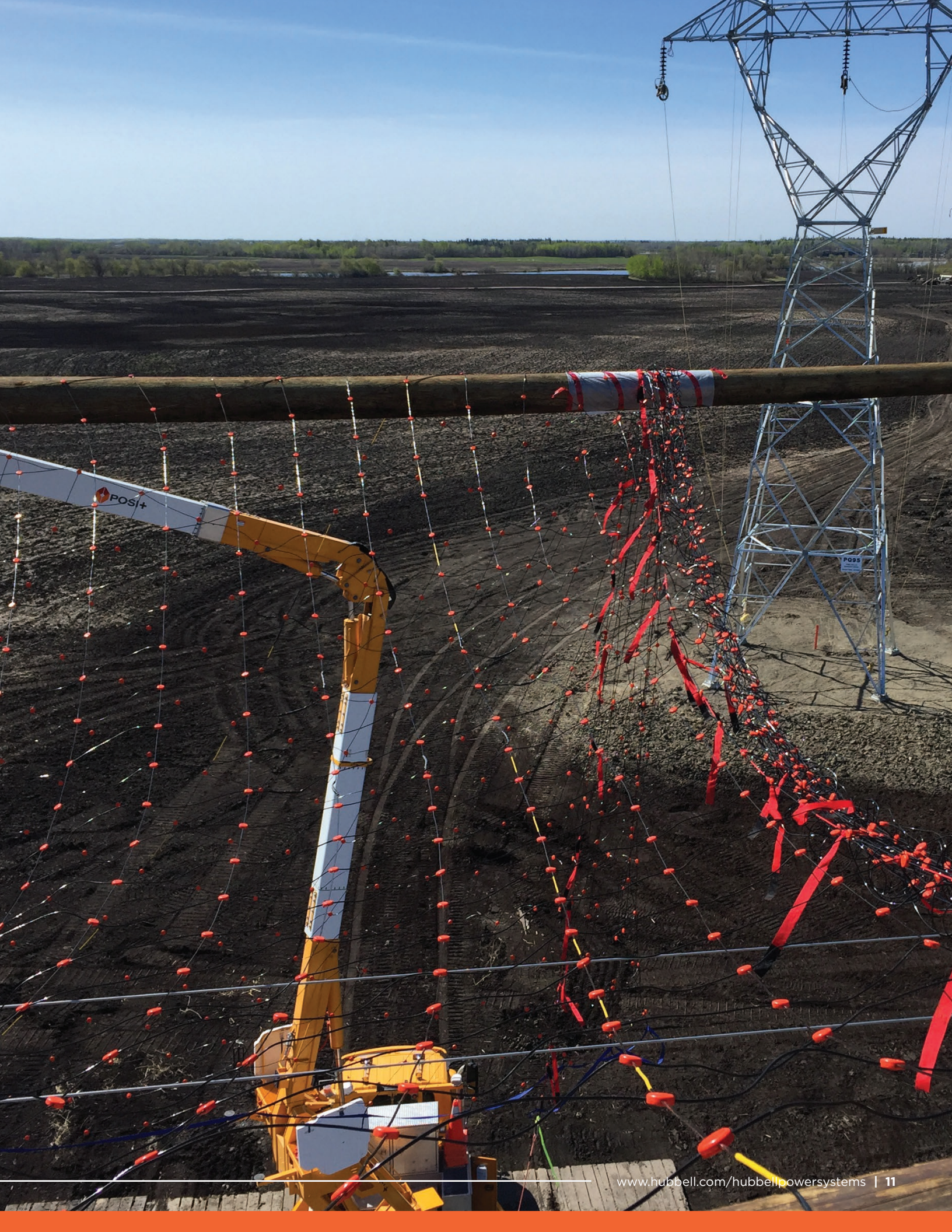
Diameter: ¼ in (6 mm)

Mesh Size: 2.5 ft x 2.5 ft (0.75 m x 0.75m)

Standard Lengths: 100 ft (30 m), 150 ft (45 m), 200 ft (61 m)

Width: 70 ft (21 m)

All Nets are made to order. Contact CSR/TM/BU for pricing and availability





As a world-renowned brand for hotline tools and temporary grounding equipment, we are dedicated to providing high quality tools that are critical for lineman safety.

GET IN TOUCH:



hpscs@hubbell.com



(573) 682-5521



www.hubbell.com/hubbellpowersystems



**Hubbell Power Systems
210 N. Allen
Centralia, MO 65240**



A Hubbell brand

©2024 Hubbell Power Systems. All rights reserved.
Hubbell and the Hubbell logo are registered trademarks or trademarks of Hubbell Incorporated. All other trademarks are the property of their respective owners.

CENT-LTE-BR-EN-02717 | 10/2024