



PRODUCT GUIDE

RENEWABLES

PARTNERS FOR A BETTER TOMORROW



**Smart
Technology**



**Technical
Expertise**



Reliability



Sustainability



Wind, solar, and battery storage solutions

Improving efficiency, reliability and sustainability are keys to success as we find ways to replace fossil fuels with sustainable alternatives that harness the full potential of new power sources.

Hubbell proudly offers a wide selection of products and services that span the entire scope of Wind, Solar and Battery Storage renewable energy projects from products that enhance solar panels and arrays, wind turbines and towers to collector systems and transmission components.



Renewable power value chain

Hubbell's success stems from a strong history of listening to our customers and their business needs. We respond by delivering on aggressive schedules to ensure the highest levels of quality and satisfaction, fewer parts and ease of installation. Our market basket of renewable energy solutions are designed with product lifecycle expenses in mind to reduce cost of ownership for:

- Data Centers
- Entertainment
- Educational
- Federal, State, and Local Government
- Financial
- Healthcare
- Manufacturing
- Pharmaceutical and Life Sciences
- Retail
- Residential
- Telecom
- Utilities
- Battery Storage

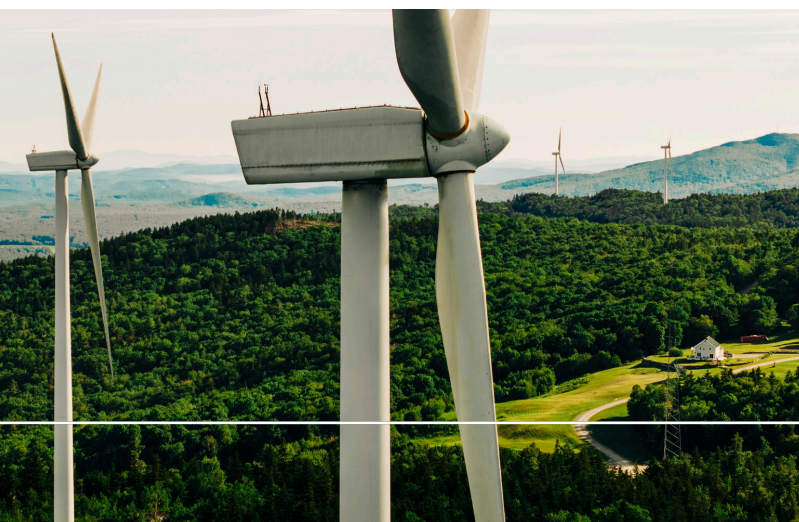


Table of Contents

Connectors - Power, Grounding & Bonding..... 6 - 13

Wire Management..... 14 - 17

Tools, Dies & Accessories..... 18 - 19

Commercial Fittings..... 20 - 23

Industrial Fittings 24 - 25

Enclosures, Wireways & Fittings 26 - 27

Boxes, Covers & Plates 28 - 31

Transformer & Power Quality 32 - 33

Power Distribution 34 - 35

Cable Glands..... 36 - 37

Cable Accessories..... 38 - 39

Enclosures - Above & Below Ground.....40 - 41

Data Control & Acquisition 42 - 43

Substation and Transmission Connectors 44 - 45

Insulators & Arresters 46 - 47

Metering, Reclosers & Capacitor Banks 48 - 49

Utility Switchgear 50 - 51

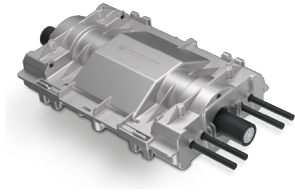
Wildlife Mitigation 52 - 53

Anchoring..... 54 - 55



Connectors

Burndy products support all aspects of renewable energy applications from arrays to collector systems and beyond. Discover tooling, connectors, fasteners, grounding, and bonding solutions and more.



Insulation-Piercing Compression Connector for Solar Trunk Bus Solutions

Aluminum Compression H-Tap, Run: 500 kcmil AL PV Wire; Tap: #10-8 AWG
CU PV Wire

- Flexible trunk bus connection
- Labor and cost savings
- Innovative design
- cULus listed 486A-486B wire connector
- UL 486D compliant: sequence E rain & H sunlight resistance/UV
- Conductor: flexible

Compression Terminal

Type YAZ HYLUG™ Uninsulated Copper Compression Terminals

- 2-Hole, narrow tongue copper compression terminal that accommodates flex and AWG conductor
- Temperature rating: 90 DEG C
- Conductor type: flexible
- CSA Certified
- UL 486A-486B
- UL listed
- RoHS



Compression C-Tap

TYPE YC-L Thin Wall Copper C-Taps

- Bare copper range taking C-tap that allows for less inventory as one C-tap can accommodate a multitude of wire combinations
- Reinforced ribs on the outside of the C-tap increases the mechanical holding strength of the connection
- Creates a compact connection that allows for easy taping and insulating
- CSA Certified
- UL 486A-486B
- UL467
- UL listed
- RoHS



Single Sided Two Conductor Clear Insulated Multi-Tap Connector

Type BIT and BITO (Offset) UNITAP™ Clear Insulated Multi-Tap Connectors

- Multi-Tap connectors are installed quickly and easily and are suitable for use on code conductor
- UL486B listed
- Dual-rated AL9CU for any stranded copper or stranded aluminum applications
- 600 volt, 90° C
- CSA Certified
- UL 486A-486B
- UL listed
- RoHS





Clear Insulated Splice Reducer

Type BISR UNITAP™ Clear Insulated In-Line Splice/Reducer Connectors

- In-line splice/reductions are made quickly and easily with the UNITAP™ line of clear insulated connectors for code conductor
- UL486B Listed
- Dual-rated AL9CU for stranded copper or stranded aluminum applications
- CSA Certified
- UL 486A-486B
- UL Listed
- RoHS



HYLUG™ Compression Terminals

Uninsulated aluminum compression terminal in 2- and 4-hole designs

- HYLUG Compression Terminals in 2- and 4-hole designs inhibit connector rotation and increase area contact
- Internal chamfer at the wire entry to ensure smooth insertion of the wire of the wire strands during insertion
- Dual-rated for use on both aluminum and copper conductors
- CSA Certified
- UL 486A-486B
- UL Listed
- RoHS



Cold Shrink End Caps

Types CSEC (Low-Voltage Conductor)

- Easy, safe, labor-saving installation
- Resists abrasive conditions
- Suitable for a wide range of cable sizes
- UV Resistance, thermal stability
- No special tools, heat, torches or training required
- Water resistant
- Resists acids and alkalis
- Operating Temperature 90° C
- cULus Listed



Medium Voltage Termination Kits

- Spiral Ripcord Design: Features a spiral ripcord for easy installation, allowing fast and effortless removal of the hold-out core; the ripcord is also recyclable.
- Built-in Sealants: Incorporates high-performance mastic sealants at both the top and bottom of the termination, streamlining the installation process and saving time.
- Advanced Stress Control: Utilizes a unique stress control system with microvaristor (ZnO) technology, ensuring exceptional discharge and impulse performance.
- Consistent Tube Length: Maintains consistent tube length before and after application, ensuring reliable and predictable performance.
- Durable and Protective Materials: Comprises a durable silicone rubber body that is UV-resistant and hydrophobic, preventing moisture and contaminant accumulation, for reliable indoor and outdoor installation without heat application.



Compression Ground Rod Connector

Type YGLR-C GRIDLOK™ Ground Rod to Grid Connectors

- Ground grid connector for a wide range of copper cable to ground rod
- Provides high torque strength on ground rod
- UL467 Listed
- Acceptable for direct burial in earth and concrete
- Prefilled with PENETROX™ compound and strip sealed
- CSA Certified

Figure C Connectors

Type YGHC-C HYTAP™ Irreversible Compression Grounding figure “C” Connector



- Irreversible compression ground tap figure “C” connectors
- Accommodates all cable combinations from #6 solid through 500 kcmil. “C”- shaped opening permits placing two continuous parallel cables into conductor groove
- UL 467 Listed
- Acceptable for direct burial in earth or concrete.
- Prefilled with PENETROX™ compound and strip sealed
- Certain sizes are also UL467 Listed and CSA Certified for wire to ground rod
- CSA

Compression Grounding Connector

YGHC-C HYTAP™ Figure 6 Connectors



- Irreversible compression ground tap figure 6 can be used as a tap connector or as a tap splice connector
- Four die sets and eight connectors can accommodate a conductor range from #8 solid through 500 kcmil plus 1/2", 5/8" and 3/4" copper bonded ground rods
- Acceptable for direct burial in earth and concrete
- Prefilled with PENETROX™ compound and strip sealed
- CSA Certified
- UL467 Listed



Concentric Neutral Grounding Connector

Type YGHC-CN Figure C connectors designed for use with concentric neutral stranding

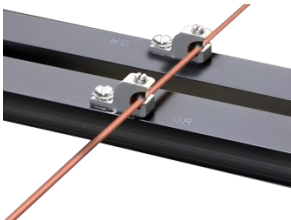
- Irreversible compression ground tap figure “C” connectors
- “C”- shaped opening permits placing two continuous parallel cables into conductor groove
- Acceptable for direct burial in earth or concrete
- Prefilled with PENETROX™ compound and strip sealed
- CSA Certified
- UL467 Listed



Type YGF Grounding Plates

Compression Grounding Plate used to position the grounding plate on a threaded rod prior to placement of the concrete

- Designed to withstand the rigors of concrete construction
- High strength, high-conductivity cast copper alloy body with a pure wrought copper compression element
- Tapped NEMA-size holes and spacing on the face with a tapped hole on the underside for ease of positioning prior to pouring the concrete
- Acceptable for direct burial in earth or concrete
- Prefilled with PENETROX™ compound and strip sealed
- CSA Certified
- UL467 Listed



Type CL50-1TN Copper Lay-in QIKLUG™

Open-Faced Copper Lay-In Lug manufactured from high strength pure electrolytic copper to ensure maximum strength and conductivity

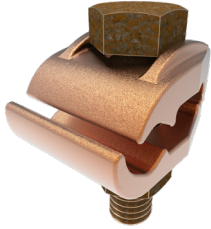
- Stainless steel screws used for excellent corrosion resistance
- cULus 467 Listed for US and Canada Markets
- cULus 2703 Listed for US and Canada Markets
- Rated for Direct Burial in Earth or Concrete



Type GAR Mechanical Grounding Connectors

High copper alloy Mechanical Grounding connector for joining a range of cables in parallel or perpendicular to rebar, rod, pipe or tubes.

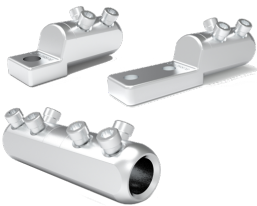
- Especially good for fence posts
- DURIMUM™ Silicon Bronze U-bolts, nuts, and lockwashers
- One-wrench installation
- Rated for Direct Burial in earth or concrete
- UL467 Listed for US and Canadian Markets



Type GB Ground Connectors

Cast copper alloy ground connector with a hexagonal bolt for joining cable to bar

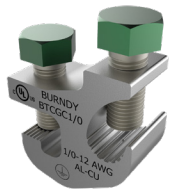
- High copper alloy ground connector for joining a range of cable to 1/4" thick bar
- Separates the cable from the bar
- Rated for Direct Burial in earth or concrete
- UL467 Listed for the US and Canadian Markets
- One wrench installation



Shear Bolt Mechanical Connectors

Shear Bolt Lugs and Splices

- No Tooling or Die investment required
- Simplified installation with use of shear bolts
- UL486A-486B Listed
- Tin Plated to reduce galvanic corrosion and oxide build up
- AL9CU Dual Rated for use with copper and aluminum conductor
- Can be used in circuits up to 35kV
- UL 486A-486B Listed Connectors; 90°C, up to 35kV



Type BTCGC and BTCGCSS Ground Clamps

Ground Clamps for Cu/Al Conductor to AL or Steel Cable Tray, Solar PV Module Frames, Galvanized Steel Purlins and other Flat Flanges.

- Made of aluminum and tin plated, the BTCGC-SS cable tray clamps accommodate aluminum or copper conductor #14 AWG through 250 kcmil
- SS version is suitable for outdoor applications
- Quick and easy installation requiring no drilling or special tools; use with 1/2" maximum straight rail, aluminum and steel cable trays
- Tin plated for durability and corrosion resistance
- cULus 467 Listed for US and Canada Markets
- BTCGC-SS cULus 2703 Listed for US and Canada Markets



Flexible Copper Braid Jumpers

Type BB024L9T14 Flexible Copper Braid.

- Flexible copper braid jumpers designed to take up linear expansion and contraction
- Designed to take up linear expansion and contraction, compensate for misalignment and absorb vibratory movement of electrical equipment
- CSA Certified
- UL467 Listed

BIPC Connectors

Insulation Piercing Connector for Copper/Aluminum



- The Type BIPC, BURNDY® Insulation Piercing Connector is ideally suited for splicing, tapping and dead-ending aluminum and copper conductor wire sizes: #14 AWG to 750 kcmil
- Utilizes shearing installation technology, 6-point socket impact driver for easy installation and removal; no torque wrench required
- cULus Listed 90° C, *600 Volt

thermOweld® Exothermic Connection System

Simple, efficient method for welding copper to copper, copper to steel and copper to copper-clad steel.

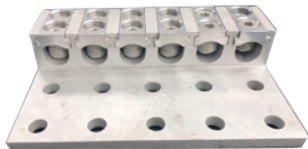


- Exothermic molds made from high quality graphite
- Various exothermic weld metals offered
- thermOweld® EZ Lite Remote® 2.0 In-Line Battery Ignition System
- UL467 Listed
- Rated for Direct Burial in Earth or Concrete



Lay-in Connectors - DLI

Heavy duty lay-in connectors eliminate the frustration of feeding and bending conductors into large standard connectors



- Connector fabricated from 6061-T6 aluminum alloy for conductivity and strength
- Clear Plated for low contact resistance
- All mounting holes 1.75" on center line
- Fully tested to ANSI C119.4 for Class "A" connectors



Bonding Washers

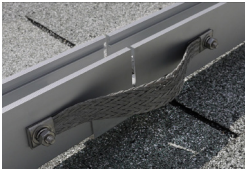
WEED washers for bonding Photovoltaic (PV) module frames with metal racking structures.

- 304 Stainless Steel
- Washer teeth pierce non-conductive surface coating eliminating the need for surface prep
- Snap or slide into place
- Top clamp, bottom mount and universal washer models
- UL2703 Recognized

Jumper Applications

For maintaining electrical continuity over air gaps.

Bonding Jumpers



- Tin plated braided copper
- Available with or without hardware
- Available with WEED-Technology to eliminate the need to prep coated surfaces
- Standard lengths range from 6" to 36"
- 1/4", 1/2", 3/8" and 5/16" Mounting hole sizes

Rope Lay Jumpers



- Tin plated copper stranding crimped with Burndy lug
- "Rope-like" design provides flexibility when bonding parts that move or are subject to high vibration or winds
- Available with WEED-Technology to eliminate the need to prep coated surfaces
- Standard lengths range from 6" to 18"
- 1/4", 1/2", 3/8" and 5/16" Mounting hole sizes

Grounding Lugs

For a continuous ground patch on roof or ground mounted solar systems.



- Tin Plated Copper
- Low Profile design
- One solid or stranded copper wire (14 AWG to 6 AWG) or two copper wires (12AWG to 10 AWG)
- Available with or without hardware
- Available with WEED-Technology to eliminate need to prep coated surfaces
- Available with T-Bolt or Hex Bolt
- UL467 Listed
- UL2703 Recognized

A close-up photograph showing a yellow metal wire management clip securing a black cable to a yellow metal rail. The background is a blue solar panel with a grid of cells. The lighting is bright, creating strong highlights and shadows.

Wire Management

Wiley offers a complete range of wire management, bonding and grounding, and clamping solutions for residential, commercial, and utility solar and wind applications. Ensure top performance under the most extreme environments with Wiley clips, straps, hangers, cable ties, and more.



Cable Clips (ACC-XXX)

Install on the module frame or other equipment flanges

- 304 Stainless Steel
- Straight on, 90°, 180° and combination installation solutions
- Portfolio includes models accommodating up to 4 wires with diameters ranging from 4.1mm to 8.0mm
- Flange Thickness Range Scale of 1.3mm – 3.0mm
- No tools required for installation
- Rolled edges to prevent installation damage
- UL1565 Listed



Rail Clips (ACC-RXX)

Cable clips that install onto the rail channel

- 304 Stainless Steel
- Models to accommodate from 1 – 4 PV wires or bundles up to 15 Micro Inverter Trunk or AC Cables
- Compatible with Unirac or similar racking profiles
- Rail Channel or Slot Width: 6.35mm – 13.5mm
- No tools required for installation
- Rolled edges to prevent insulation damage
- UL1565 Listed



Coated P-Clips (WIPC14-XX)

High Strength Application for Bundles of Wires

- Zinc-plated steel coated with UV-Resistant vinyl
- 1/4" Mounting hole (hardware not included)
- Available in bundle diameters ranging from 3/4" to 2"
- UL1565 Listed



Bundle Straps (WBSXXV)

For bundling and securing PV cables.

- 304 Stainless Steel with UV Rated vinyl coating
- Installs into module frame wire management or mounting holes
- Compatible with ACC-FBC edge clip for alternate module frame location options
- Longer lengths can be used to secure cables to torque tube
- Stainless Steel Ferrule features a unique notched securement tab that acts as a third hand for install ease
- Crimp in field with linesman pliers or standard wire cutters
- Available in lengths 8" to 36"
- Tensile strength of 100 lbs.
- UL6275 Listed



Twist Straps (WTSXX)

For bundling and securing PV cables.

- 304 Stainless Steel core with UV Resistant PV Coating
- Reusable
- No tools required for installation or removal
- Available in lengths 8" to 36"
- Tensile strength up to 40 lbs.



Edge Clips (ACC-ECTXXX / ACC-ECTWXXX)

Flange clips preinstalled with cable ties

- Nylon encased clip with a steel tooth to grip the flange
- Models to accommodate flanges from 1.3mm – 3.0mm and 3.0mm – 6.0mm
- Pre-installed Nylon 6 or Nylon 12 Cable Tie in parallel or perpendicular orientation
- Available in 6", 11" and 14" lengths
- No tools required for installation
- UL62275 Listed



Cable Hangers (WCHXXX)

Support cables at the module or torque tube level

- All models offered in both 300 Series Stainless and Galvanized Steel
- Portfolio includes straight on and 90° options
- Round cross section protects cable insulation from chaffing in high wind and during tracker movement
- Bundle diameters of 1", 1.5" and 2" can hold up to 18 PV wires
- Many models packaged in easy to use bundles
- UL1565 Listed



Fuse Holders (WFHXXX)

Secures module connectors and over molded fuses to module frames

- Available in 300 Series Stainless or Galvanized Steel
- Installs into wire management or mounting holes
- Compatible with ACC-FBC edge clip for alternate module frame location options
- Models to support .085" and 1.15" connectors and fuses
- UL1565 Listed



UNIRAP™ Stainless Steel Barb Cable Ties

Type CT-SSB Nylon stainless steel BARB cable ties

- Nylon 6/6 Standard featuring self-locking stainless steel barb
- Curved tip for faster initial threading and help speed installation
- Available in UV Black and Natural
- Maximum strength and adjustability for versatility
- Chemically resistant to solvents, oils, grease, and diluted acids
- Rounded edges and bent tail for easy installation
- Safe for air handling spaces
- Plenum Rated
- CSA Certified
- RoHS CM
- cULus

Nylon 12 Cable Ties

Type CTNT UNIRAP™ Nylon 12 Cable Tie, tensile strength: 50 Lbs



- Excellent UV, chemical and moisture resistance
- Inside serrations and a bent tail for quick and easy installation
- Manufactured from polyamide 12 with smooth edge to prevent bundle damage
- Especially suitable in high moisture, corrosive (zinc chloride and dilute acids) environments or where low temperatures are a factor
- Indoor or outdoor applications
- RoHS CM

6/12 Nylon Cable Ties



- Enhanced Durability: The hybrid material enhances the durability and lifespan of the cable ties under various environmental conditions.
- Versatility: Suitable for both indoor and outdoor use, providing reliable performance across a range of temperatures and conditions.
- Cost-Effective: While offering improved performance over Nylon 6, 6/12 Nylon cable ties are generally more cost-effective than pure Nylon 12 ties.
- Lower Environmental Impact: The reduced moisture absorption leads to less swelling and degradation, minimizing maintenance and replacement needs.
- Improved Safety: The flexibility reduces the risk of damaging cables or causing sharp edges, enhancing safety during installation and maintenance.
- Flexibility and Strength: Offer excellent tensile strength while remaining flexible, making them suitable for securing bundles without causing damage.
- Reduced Moisture Absorption: The addition of Nylon 12 reduces the overall moisture absorption compared to pure Nylon 6, enhancing performance in humid environments.
- Temperature Resistance: They can withstand temperatures from -40°C to 85°C, making them versatile for various applications.
- Chemical Resistance: Resistant to oils, greases, and many chemicals, ensuring durability in harsh conditions.



Tools, Dies & Accessories

The BURNDY® Engineered System features the most complete line of installation tools in the electrical industry. Available in various styles: battery actuated, mechanical, full cycle ratchet, self contained hydraulic, remote controlled hydraulic, along with power actuated pumps, hoses and accessories, BURNDY has the options to suit your needs. BURNDY tools are designed to integrate with the complete line of BURNDY connectors. The benefits of BURNDY® tools are many, the most significant benefit being reliability.



BURNDY® PATRIOT® T3 Technology Series

The 11-Ton PATRIOT® T3 Technology crimper series provides the user the ability to TRACK crimp locations with Onboard GPS, TRACE individual crimps with comments, photos, and output force validation, and TRANSMIT data via Bluetooth®

- PAT444ST3 is the only dieless solution that creates industry compliant connections in both the Utility and C&I market
- Two (2) methods to determine good/bad output force; Audible and LED light indicators
- Safety Trigger Guard; Prevents accidental trigger engagement
- INFINITY DRIVE® with Lifetime Warranty; Enhances performance & extends tool life
- BURNDY has design control over every aspect of the BURNDY® Engineered System
- All the exceptional features of its PATRIOT predecessor, plus a new ergonomic design and state of the art technology
- The TRACK TRACE TRANSMIT intelligence feature provides critical crimping information for all projects small and large. Data collected by the T3 series, provides users a new level of confidence that their BURNDY crimper is performing to specification and enhances the application of the BURNDY® Engineered System, an undeniable advantage over all competitive tools
- TRACK crimp locations with Onboard GPS - BURNDY Exclusive!
- TRACE individual crimps with comments, photos, and output force validation
- TRANSMIT via Bluetooth® technology and sync to the cloud

U Die Kit for Copper/Aluminum

Stainless Steel U-Die Kit for Copper/Aluminum Connectors

- Stainless steel color coded dies
- Each kit comes in a plastic case and contains 15 sets of “U” Dies

UDIEKITHYGRD - Stainless Steel U Die Kit

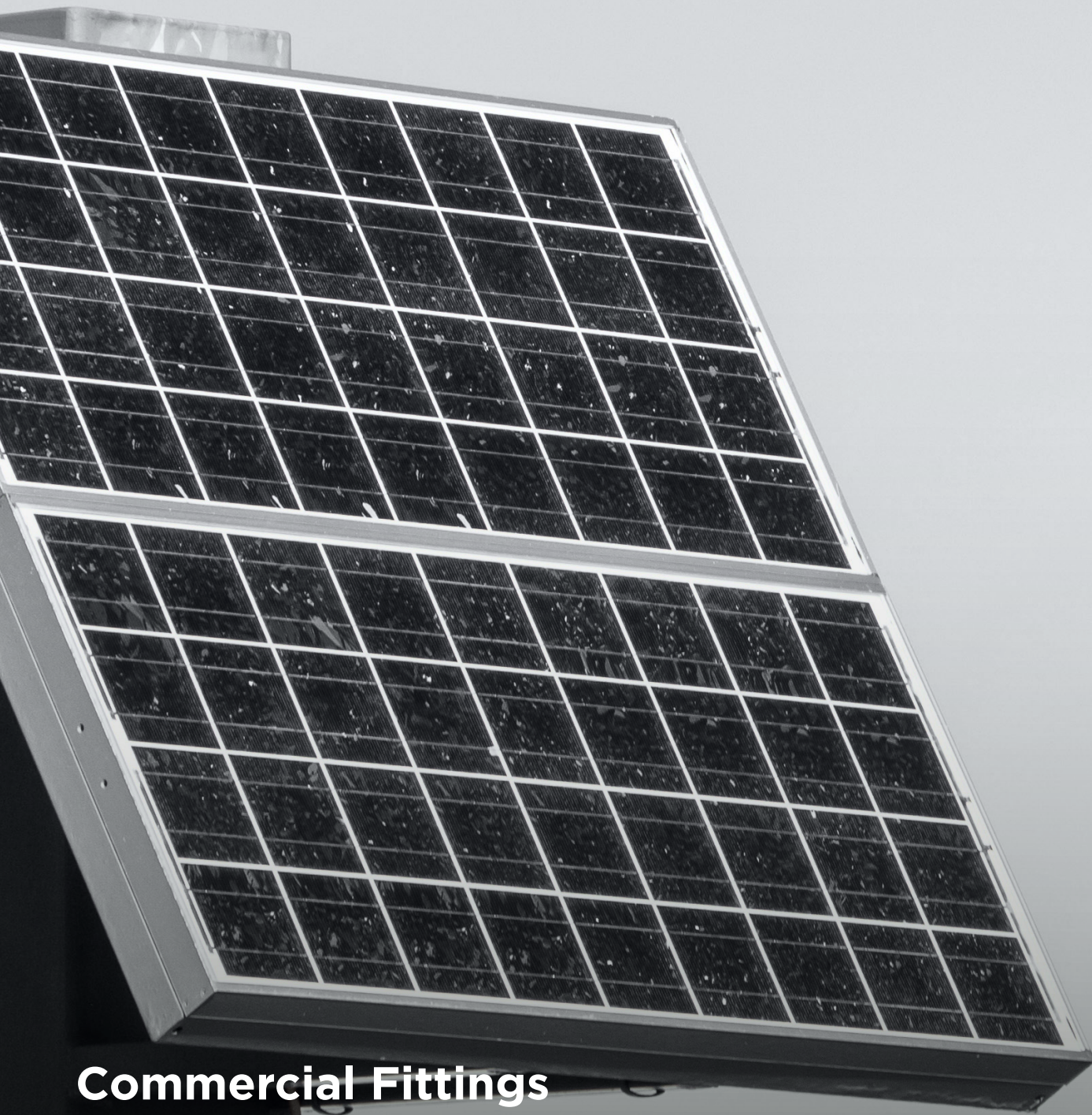
Stainless Steel U Die kit with 7 Dies to install HYGROUND® compression grounding connectors and U2CABT for pre-crimping ground rods

- U-Die kit with 7 dies to install HYGROUND and U2CABT for pre-crimping ground rods
- Includes plastic case

Power Distribution Block Cover

Type COVERYA Covers for Transformer Connectors

- Labor saving design features opening on the back end (T-Slit) to fit over Transformer Support Brackets
- 0.88” diameter hole on the back allows for ground stud to fit through easily



Commercial Fittings

RACO® fittings are the perfect solar solution whether you need to couple, connect, fasten, or ground conduit and cable. Our time-saving and versatile products provide flexibility in challenging applications. We offer weatherproof liquidtight connectors and hubs, grounding rings, grounding bushings, and raintight EMT fittings. RACO 2506 ground clamps are used for connecting bare copper ground wire to water pipes or ground rods. Bronze clamp and screw assembly permits use in direct burial applications. Conduit hub grounding rings are intended for use with RACO threaded die-cast zinc Rigid/IMC conduit hubs.

Connectors

- Used to connect conduit to a box or enclosure or to another conduit
- Provide concrete-tight connections



90° Squeeze Type Connectors,
Uninsulated - Die-Cast Zinc



90° Squeeze Connector,
Uninsulated - Malleable Iron



Screw-in Type Connectors



Set Screw Couplings - Steel



Set Screw Connectors, Insulated
and Uninsulated - Die-Cast Zinc



Connectors for Oval or Round
Cable - Die-Cast Zinc



90° Handy Ells Coupling,
Die-Cast Zinc



Threaded Hubs, Insulated
Throat - Die-Cast Zinc



Liquidtight Series

Grounding

- Pre-galvanized finish on clamps provides corrosion protection
- Insulated bushings provide a smooth rounded surface at the entrance of raceways and can be used at temperatures up to 105°C



Insulated and Uninsulated Bushings



Insulated Grounding Bushings, Lay-in Lug



Insulated Bushings - Polypropylene



Steel Locknuts



Reducing Washer



Offset Nipples-Die-Cast Zinc



Uninsulated Chase Nipples



Ground Clamps - Bronze Alloy

Compression Connectors

- Fittings from 1/2" to 4"
- Used for bonding conduit to a box or enclosure
- Suitable for applications above 600V



Compression Set Screw
Connectors - Insulated and
Uninsulated Steel



Raintight Compression
Connectors, Insulated and
Uninsulated - Steel



Compression Connectors
Steel/Malleable Iron



Compression Connectors, Insulated
and Uninsulated - Steel



Compression Connectors,
Uninsulated - Die-Cast Zinc



EMT - Flex Couplings Screw
In/Compression - Die-Cast Zinc



EMT Raintight Compression
Connector, Extended Thread,
Uninsulated

A photograph of an industrial facility featuring a yellow-painted metal walkway with railings. Several silver, cylindrical industrial light fixtures are mounted on vertical poles. The background is a clear blue sky with light clouds.

Industrial Fittings

Killark offers a wide variety of explosion proof, hazardous and industrial location fittings for all of your electrical installation needs. Our products include conduit bodies, conduit hubs, flexible couplings, blanking plugs, unions, reducers & adapters, drains & breathers, covers & gaskets, and much more. We have the products you need to move power safely and efficiently with no worry. With most fittings ranging from malleable iron to aluminum, we standby our superior corrosion resistant fittings for the harshest applications.

Fittings, Conduit Bodies

For use on threaded rigid/IMC conduit

- Use conduit outlet bodies for connecting conduit sections, for making bends in conduit runs, as pull outlets, or to provide openings for making splices and taps in conductors Suitable for applications above 600V
- Lightweight aluminum construction provides corrosion resistance and easy installation
- Covers are furnished with zinc plated screws-no worry about removing a cover once it is installed
- Gasket materials available: neoprene
- UL Standard 514B
UL LISTED E195969
- CSA - C22.2 #18



Compression Connectors,
Uninsulated - Die-Cast Zinc



E Series Fittings Type LB --
Aluminum Cover and Gasket



Compression Connectors,
Uninsulated - Die-Cast Zinc



Compression Connectors,
Uninsulated - Die-Cast Zinc



Compression Connectors,
Uninsulated - Die-Cast Zinc



Aluminum Drain, 1/2" NPT - Ex e Class I Div. 2 IP66/4X

- Silicone O-ring supplied as standard and suitable for use in a -55°C to +80°C temperature range
- Internal 316 stainless steel locknut supplied as standard
- When tightened to the proper torque the joint makes a hose down tight seal for type 4, 4X & IP66 application
- IECEx
- Nema Rating 3, 4, 4X



Enclosures, Wireways and Fittings

For any commercial application from enclosures to wireway or accessories, Wiegmann has the product to protect all electrical devices. These applications usually require a Type 1 or Type 3R rating for the enclosure. Wiegmann offers both enclosures, wireway, gutters and associated accessories to support this market requirement. Materials include painted carbon steel, galvanized, aluminum and non metallic that are complimented by a full accessory package. Engineered to order Custom and Modified services are also available for these products. Typically found indoors or in outdoor applications where only falling rain and ice are a concern.

NEMA 3R Screw-Cover Wall-Mount, Carbon Steel

Designed for use as wiring boxes and junction boxes. Provides protection in outdoor applications against rain, sleet, and snow or indoors against dripping water



- Bodies and doors fabricated from 16 gauge carbon steel or pre-galvanized steel
- Knockouts are standard on the bottom of 4.00" and 6.00" deep enclosures (reference table)
- A slip-on reversible cover is securely fastened with screws located along the bottom edge
- No gasketing is required
- Hasp for padlocking or meter seal is provided
- cULus
- Nema Rating 3R

NEMA 3R Screw-Cover Wall-Mount, Carbon Steel

Designed to protect wiring in outdoor installations against rain, sleet and snow or indoors against dripping water



- Trough and cover fabricated from 16 gauge carbon steel
- Drip shield top and smooth seamless sides, front and back, prevent rain, snow and sleet from entering the enclosure
- Embossed mounting holes are conveniently located on the back
- A slip-on removable cover is securely fastened with screws located along the bottom edge
- Knockouts are provided on bottom of enclosure
- cULus
- Nema Rating 3R
- UL Listed

NEMA 1 Wireway (HS/S Series Wireway)

Designed to protect electrical wiring in applications where dirt, dust, oil and water are not serious problems. All sections are open on one side so wires and cable can be laid in along an entire wireway run. A complete selection of sections and fittings is offered in five sizes



- Bodies and covers are fabricated from carbon steel or pre-galvanized steel
- HS Series combination hinge/screw cover design offers easy access to open top for "lay-in" of wiring. Screws do not need to be removed to open top
- UL 870
- NEMA/EEMAC Type 1
- cULus



Boxes, Covers and Plates

The RACO, TayMac and BELL brands are all known for providing electrical contractors with innovative time-saving and reliable solutions. Each brand is focused on key market segments which allows them to be the market leader in their respective area. TayMac created the first in-use device cover which soon became the industry standard and a code requirement. Known for durable and innovative device cover solutions, TayMac went on to create many other firsts including a multiple device adapter system, speedy keyhole mounting, expandable low-profile cover, and Extra Duty rated non-metallic covers.

BELL Outdoor invented their iconic BELL flip cover and BELL box over 75 years ago. Their namesake product line continues to set the standard with the term “BELL Box” commonly used to describe all makes of outdoor electrical boxes. RACO is a leading manufacturer of steel electrical boxes, covers, and commercial fittings. One of the oldest brands in the electrical industry, the brand is synonymous with quality and innovation.



Single Gang Weatherproof In-Use Cover, Extra Duty, Horizontal/Vertical, 16-in-1, 2-3/4 in. Deep, Clear

Designed to protect outdoor electrical devices from the elements like rain, snow, and debris. Provides weatherproof protection in damp or wet locations for a variety of switches and receptacles even while a cord is plugged in.

- High-impact polycarbonate construction provides maximum durability
- Patented Quick-Fit keyhole mounting system allows installation in under a minute
- Patented Universal Fit Adapter System Technology (U-Fast) for 16-in-1 custom device configurations, comes pre-configured for GFCI
- Includes attached gasket and mounting hardware
- Lockable tab
- cULus Listed
- NEC and NEMA 3R Compliant



Double Gang Weatherproof In-Use Cover, Extra Duty, 55-in-1, 2-3/4 in. Deep, Clear

Designed to protect outdoor electrical devices from the elements like rain, snow, and debris. Provides weatherproof protection in damp or wet locations for a variety of switches and receptacles even while a cord is plugged in.

- High-impact polycarbonate construction provides maximum durability
- Patented Quick-Fit keyhole mounting system allows installation in under a minute
- Patented Universal Fit Adapter System Technology (U-Fast) for 55-in-1 custom device configurations
- Pre-configured for GFCI
- Includes attached gasket and mounting hardware
- Lockable tab
- cULus Listed
- NEC and NEMA 3R Compliant



2-Gang Weatherproof Deep Box, Five 3/4 in. Threaded Outlets, Gray

For use in branch circuit wiring in wet, damp, or dry locations. May be used as a weatherproof junction box, or as a housing for receptacles, switches, and GFCIs



- Rugged die-cast aluminum construction
- State-of-the-art powder coat finish provides maximum weatherability and scratch resistance
- Included beveled corner mounting lugs provide for 24 different mounting positions
- Includes two 3/4 in. closure plugs
- Internal hub threads comply with NEMA requirements and will accept all threaded fittings and threaded conduit. Ground screw installed
- Multi-lingual instructions in each package
- cULus Listed
- NEC and NEMA 3R Compliant

1-Gang Flip Weatherproof Cover, Vertical/Horizontal, 12-in-1, Gray

Provides weatherproof protection for outdoor receptacle or switch



- Heavy duty die-cast metal construction with premium powder coat
- Patented Quick-Fit keyhole mounting system allows installation in under a minute
- Patented Universal Fit Adapter System Technology (U-Fast) for 12-in-1 custom device configurations, comes pre-configured for GFCI
- Lockable tab and spring hinge closure
- Includes attached gasket and mounting hardware
- Horizontal or vertical mount
- cULus Listed
- NEC and NEMA 3R Compliant

1-Gang Horizontal Weatherproof Cover, Duplex, Gray

Provides weatherproof protection for outdoor receptacles



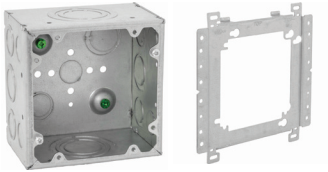
- Self closing lids assure weatherproof protection when the receptacle is not in use
- Includes gasket and mounting hardware
- Rugged metallic construction with powder-coat finish resists scratches and wear
- Designed for a horizontal outlet
- cULus Listed
- NEC and NEMA 3R Compliant

2-Gang Weatherproof Cover, Blank, Gray



Provides weatherproof closure for outdoor boxes used for wiring junctions

- Rugged metallic construction
- State-of-the-art powder coat finish provides maximum weatherability and scratch resistance
- Installation hardware, gasket and multilingual instructions are included
- cULus Listed
- NEC and NEMA 3R Compliant



5" Square Data Box and Bracket

Mounting Bracket allow you to mount 4 in, 4-11/16 in and 5 in boxes to stud or open center bracket

- Large capacity boxes used for audio, video, data and power applications.
- Provides ample space for Cat 6A and fiber optical cable bends.
- Extra large knockouts for pulling pre-terminated cables



4 in x 2 in Handy Box and Cover

RACO® Handy Box covers are designed to match the contours of the box

- Cover corners are rounded
- All covers have captive screws
- Accommodates ½ in. drywall thickness
- Pre-galvanized steel construction
- UL Listed



Transformer and Power Quality

Maximize renewable energy utilization and distribution with transformers and customer magnetics that seamlessly integrate renewable sources of energy to the grid.

The transition towards decarbonization and decentralization requires a fundamental reinvention of how energy is distributed, stored, and consumed. Use one of our magnetic solutions in your renewable energy applications to provide dependable power distribution and effective voltage isolation to safely convert renewable energy into usable power.



Encapsulated Transformer

- Single Phase
- kVA .05 thru 25
- Voltages 240 X 480 - 120/240V (see website for all combinations)
- Encapsulated core & coil
- Quiet operation with sound levels below NEMA standards
- NEMA 3R Rated

Buck Boost Transformers

Stabilize voltage levels to match the requirements of your renewable system with ACME's buck boost transformers. Smaller and lighter than standard isolation transformers, buck boost models are an economical and durable solution for correcting voltage sags or swells or for use applications when you require a low voltage output.

Buck-Boost Transformer (Single phase)

- .05 thru 10 kVA
- Voltages 120 X 240-12/24, 120 X 240-16/32, 240 X 480-24/48
- Encapsulated core and coil
- NEMA 3R Rated, and quiet operation with sound levels below NEMA standards



Buck-Boost Transformer (Three phase)

- 6 kVA thru 112.5
- Voltage 240 - 208
- Encapsulated core and coil
- NEMA 3R Rated, and quiet operation with sound levels below NEMA standards



Non-Linear Load Transformer

Maintain consistent power output in wind and solar applications with non-linear load transformers. Non-linear loads generate high levels of harmonic currents. When supplying power to these loads, a special transformer design is necessary. ACME's custom winding techniques prevent overheating and minimize eddy current losses generated by harmonics.

- 15 thru 750 kVA
- 480Δ - 208Y/120V standard, other ratings available
- 10-year limited warranty
- UL Listed and CSA Certified

Panel-Tran Zone Power Centers

A reliable power solution for harsh environments and an ideal way to save time, space, and money when you need a reliable, integrated temporary power solution. Instead of buying, assembling, and installing separate components, rely on one pretested, prewired combination — primary breaker, dry-type shielded transformer, and secondary breaker.

- 5 thru 30 kVA
- Single or Three Phase
- 480V Primary to 120/240 or 208Y/120V Output
- Stainless Steel construction available
- UL Listed
- Service entrance rated
- Preassembled in a NEMA 3R enclosure
- 10 year warranty





Power Distribution

Killark's Solar String Combiner and Load Break Disconnect Enclosures make up a balance of systems offering that provides efficient solar power distribution in a variety of applications. These products also work in conjunction with Burndy Compression IPC and Shear Bolt products to distribute renewable energy more effectively.

SSC Series

Hubbell Solar String Combiner enclosures incorporate industry leading safety and design features, providing a superior solution for utility-level solar applications.



- Flexible configuration options
- Up to 600A Main Disconnect Switch
- Up to 22-String Input from Solar Panel Arrays
- Up to 50A Finger-Safe Fuse (80A Fuse holder)
- Vertical fuse orientation and spacing allows for superior heat dissipation
- Surge Protective Device (SPD) offered as optional protection
- Optional safety shield covers all live components
- cETLus Certified to UL1741 (PV Standard)
- TYPE 3, 4, 4X
- Tamb = -40°C to 50°C

LBD Series

The Hubbell Load Break Disconnect Series of disconnect switch enclosures incorporate industry leading safety and design features, providing a superior solution for utility-level solar applications.



- Flexible configuration options
- Up to 600A Main Disconnect Switch
- Surge Protective Device (SPD) offered as optional protection
- Optional safety shield covers all live components
- cETLus Certified to UL1741 (PV Standard)
- TYPE 3, 4, 4X
- Tamb = -40°C to 50°C

The switch and combiner box work in conjunction with our Compression IPC and shear bolt products to distribute solar power more effectively.



Cable Glands

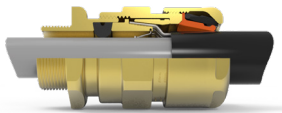
With over 60 years of experience manufacturing cable termination products for the most arduous environments, and a reputation built off safety and reliability, Hubbell's range of cable glands offer the safest, most cost-effective glanding product availability today. With a global network of offices and distribution partners, we can offer unrivaled technical support and peace of mind to installers and owners alike.



CGB Series

For use all unarmored cable and flexible cords

- Revolutionary design covers a broader range of cable sizes
- Grommet sleeves are field removable to adjust to multiple cable ranges and cable diameter variances
- Eliminates carrying numerous amounts of different CGB type connectors for job sites
- Available in sizes ranging from ½" to 4" NPT in copper-free aluminum, zinc plated steel, 316L stainless steel and nickel plated brass finishes
- Type 3, 3R ,4, 4X, 12 ratings



153/RAC Industrial Cable Gland

The 153/RAC Cable Gland provides an elastomeric seal on the cable inner sheath, and a low smoke, zero halogen IP and retention seal onto the cable outer sheath

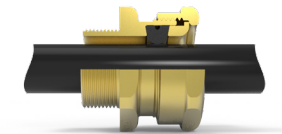
- Fully Inspectable Armor Clamp
- Unique Rear Seal - Offering ultimate sealing over an extremely wide cable acceptance range
- IP66, IP67 and IP68 (30 meters for 7 days) to IEC/EN 60529 and NEMA 4X



123 Industrial Cable Gland

Incorporates two independent seals for use on non-armored elastomer and plastic insulated cables in indoor or outdoor applications.

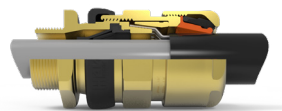
- Elastomeric seal on cable inner sheath
- Rounded Cable entry to prevent cable damage
- IP66 and IP67 to IEC/EN 60529



501/421 Industrial Cable Gland

For use on non-armored elastomer and plastic insulated cables in indoor and outdoor applications.

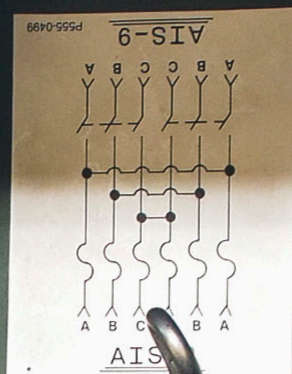
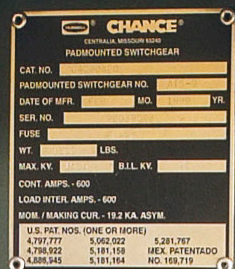
- Elastomeric seal on cable inner sheath
- Rounded cable entry to prevent cable damage
- IP66 and IP67 to B S EN 60529



501/453 Universal Hazardous Area Cable Gland

The 501/453 Universal Cable Gland is dual certified Exe/Exd, robust and for use with single wire armor 'W', wire braid 'X', steel tape armor 'Z', elastomer and plastic insulated cables

- Inspectable Deluge Seal
- Passive diaphragm seal - Suitable for cables exhibiting 'Cold Flow'. Fully inspectable.
- IP66, IP67 IP68 (30 meters for 7 days, special conditions may apply) and IP69 to IEC/EN 60529 and NEMA 4X
- ATEX/IECEX Protection Class Ex II 2GD Ex db IIC Gb; Ex eb IIC Gb; Ex nR IIC Gc; Extb IIIC Db



WARNING
FOLLOW INSTRUCTIONS ON COM-
PARTMENT DOOR BEFORE OPEN-
ING THIS DOOR TO PREVENT PERSONAL
INJURY OR EQUIPMENT DAMAGE



WARNING
FOLLOW INSTRUCTIONS ON COM-
PARTMENT DOOR BEFORE OPEN-
ING THIS DOOR TO PREVENT PERSONAL
INJURY OR EQUIPMENT DAMAGE

Cable Accessories

Hubbell offers a wide range of Cable Accessories products and has a team of experts available to support end users and installers with product selection and specifications. Our underground separable connectors are designed and tested to meet or exceed all applicable requirements of IEEE, and other industry standards.



Medium Voltage Cold Shrink Termination Kits

Indoor/Outdoor industrial series to be used with shielded conductor, XLPE and EPR copper tape, drain wire shield, single shield or lead sheathed power cables for the Electrical/Industrial construction market

- Indoor/Outdoor Industrial Series
- Applications up to 35kV
- Burndy CSGO Kit Series contains (3) one-piece, Skirted (Indoor/Outdoor)
- These kits are designed for terminating solid dielectric shielded power cables rated 5-35 kV
- Silicone rubber terminations that meet IEEE Standard 48 Class 1 for indoor and weather protected applications



Deadbreak T-Body Kits

Includes Deadbreak T-body, stud, cable adapter, insulating plug with cap, shearbolt or compression lug, jacket seal kit or shield adapter kit

- 600A and 900A kits
- 200BIL Rated
- Meets or exceeds IEEE Std. 386 and IEEE Std. 592



Underground Arrestors

- Meets or Exceeds IEEE Std. 386 and IEEE Std. C62.11. Section 8.1 requirements
- Interchangeable with other products meeting the same requirements
- Fully shielded, insulated and submersible



Enclosures - Above and Below Ground

Hubbell's diverse family of enclosures made of polymer concrete, FRP, or plastic provides strength, reduced shipping costs and installation time and lasting value. We also manufacture backflow preventor enclosures, sectionalizing cabinets, and secondary pedestals in various materials offering a complete assortment of standard sizes. In addition to our standard offerings, we can engineer an above ground or underground enclosure for customer-specific needs.



Sectionalizing Cabinets/Primary Pedestals/3 Phase

Hubbell's Sectionalizing Cabinets are not only strong, durable, and easy to install, but they also emphasize security and convenience.

- UV-stabilized gelcoat finish.
- Meets ANSI C57.12.28 Pad-Mounted Enclosure Integrity Standard and are RUS listed among other spec compliances.



PG Series Box Assemblies

Hubbell Quazite® PG series are used for a variety of purposes, such as splice box, pull box, equipment enclosure or for any application requiring easy access to an underground service.

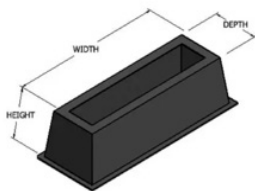
- PG Boxes are comprised of polymer concrete, made from select-grade aggregates and a polymer resin system.
- Quazite® meets/exceeds ANSI/SCTE 77 2017 and most are UL-listed to the ANSI National Standard.



Solar Cabinet - BGSSE

Provides safe and convenient primary cable terminating, sectionalizing, tapping, and switching point for underground solar distribution systems. Strut design utilized for easy junction hanging.

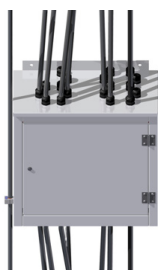
- Heavy-Duty channelized construction. Fabricated from 12 gauge galvaneal steel.
- Heavy duty wind locks are standard. Full 3/8" diameter solid copper ground loop standard.
- Also available in mild steel, aluminum, or stainless steel (contact rep). Oven cured green powder coat polyester finish exceeds ANSI standard C57.12.28.



Ground Sleeves

Hubbell Ground Sleeves feature a cosmetically appealing smooth exterior and flat mounting surface to securely anchor pad-mounted electrical equipment.

- Manufactured with a fire-retardant resin and a combination of chopped glass spray-up and hand-laid woven roving glass reinforcement to ensure structural integrity.
- The fiberglass is protected by a marine grade UV stabilized gel-coat finish, ensuring longevity.



Cable Splicing Enclosures for wind turbines LWS

CMC's cable splicing enclosure is easy to install, lightweight, with excellent corrosion resistance. Providing plug and play methods reducing installation time, resolving field cable cutting mistakes and providing a serviceable inspection point for our customers, we design enclosures to fit specific customer needs.

- Supplied with bus bars for quick and easy installation. DLO Cable Compatible
- All-welded construction: Welds and seams are ground smooth
- Removable swinging doors.
- Custom configurations available upon request. Lay-in bus bars available.



Aluminum Primary Sectionalizing Cabinet, Single or three phase BMSSE

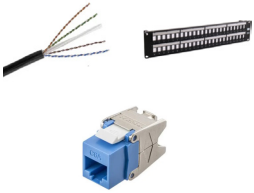
Safe and convenient primary cable terminating, sectionalizing, tapping, and switching point for underground distribution systems. Designed to meet ANSI C57.12.28- 1988 for pad mounted equipment enclosure integrity.

- Heavy-Duty channelized construction
- Stainless steel Penta-head bolt and stainless-steel padlocking handle. All 304 stainless steel hardware
- Ground lugs are located on mounting plate and on the enclosure for concentric neutral
- A wind stop is included on all top hinged units for operating safety



Data Control and Acquisition

Connectors for ethernet to control systems on a solar or windfarm, including turbine controls, central inverter skid controls or substation interfaces.



Copper Network Cable Solutions

- Configure Hubbell Premise Wiring's high performance, component compliant connectivity (jacks, panel, cords, blocks) with the NEXTSPEED cable for a complete end to end cabling infrastructure solution with the best mix of performance and value
- NEXTSPEED's extended bandwidth provides reliability with zero bit error rate performance for today's high speed digital communications
- Solutions for outdoor and harsh environments are also available



Fiber Network Cable Solutions

Count on our reliable FiberHUBB series for flexible, modern network needs. Simplify network designs, save space and time while improving connectivity

- Hubbell premium quality fiber cable completes the end-to-end channel solution, offering a single source advantage to specifiers, contractors, and end users
- Made to order with the industry's highest performing optical fiber, Hubbell fiber cable provides total integration of connectivity, enclosures, and pre-terminated assemblies into a single-source infrastructure solution



Cabinets and Enclosures

Hubbell's Industrial REBOX® Enclosure with Cooling product offering allows deployment of network equipment outdoors while maintaining an appropriate temperature operating range. High quality manufacturing and installer friendly configurations ensure that equipment is safe from environmental factors and meets the many challenges of outdoor installations



Cable and Wire Management Solutions

The Ladder Rack System features light, rugged, tubular steel construction. It is designed for mechanical support and strain relief in long runs of cable and creates a smooth gradual bend for cable. Rail and stringer material is 16 ga steel tubing

- Durable black or gray powder coat finish
- Supports UTP or fiber cabling.
- Complete family of accessories includes: wall supports and brackets, cable drops, retaining posts, splice kits, and ceiling mounting kits



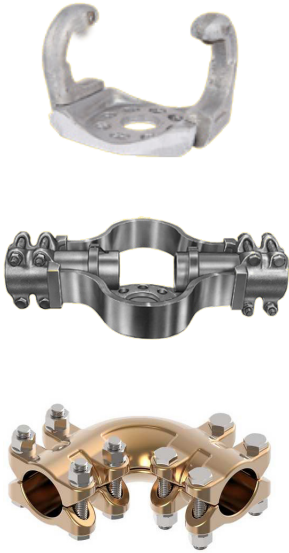
Basic and Intelligent Power Distribution

- Single and three-phase power from 15A to 60A, available with and without breakers
- Multiple receptacle configurations and densities including standard NEMA, C13, and C19
- Intelligent PDUs feature advanced monitoring on LCD screen and built-in web browser to monitor power consumption
- Industry leading cord locking that prevents inadvertent disconnections



Substation and Transmission Connectors

Hubbell Power Systems provides the industry's most comprehensive range of substation and transmission connectors through our Anderson™ and Fargo® brands. Our expert teams possess the technical expertise to design and maintain a wide range of products for both traditional and custom applications. These include terminals, bus supports, stud connectors, grounding equipment, suspension clamps, deadends, splices, and transmission assemblies, all engineered to meet the most demanding specifications.



Substation Connectors

Find everything you need to terminate, join, branch, hold/support, and ground connections in your substation:

- Products
 - Terminals
 - Couplers
 - Tees
 - Bus Supports
 - Stud Connectors
 - Miscellaneous and Grounding
 - EHV Connectors
- Features
 - Voltage Options: Standard and Extra High Voltages (EHV) from 29kV to 500kV
 - Materials: Aluminum, bronze, and copper
 - Connection Types: Bolted, compression, and welded
 - Configurations:
 - Cable to cable
 - Cable to flat; multiple cables to flat
 - Tube to flat
 - Tube to tube
 - Tube to cable
 - Cable to insulator
 - Tube to insulator
 - And more



Transmission Connectors

Our top-tier engineering team is equipped to develop and optimize transmission solutions tailored to meet any customer's specific needs.

Products:

- Line and Tower Hardware
- Suspension Clamps
- Deadends
- Splices / Sleeves
- Jumper Terminals / Tee Taps
- Conductor Protection

Features:

- Voltage Options: Standard and Extra High Voltage (EHV) – up to 765kV
- Materials: Aluminum, ductile iron, galvanized steel, and bronze
- Connection Types: Bolted and compression
- Temperature Options: Standard and High-Temperature

Kitting - TowerPak®:

- Transmission hardware grouped by assembly or structure
- Assemblies are fit-checked to ensure all components mate appropriately
- Hardware is clearly marked and



Insulators and Arresters

Next to people, your power grid infrastructure is your largest and most valuable investment. Protect it with Hubbell Power Systems, Inc. surge arresters and insulators. With over 100 years of experience and product innovation, Hubbell Power Systems, Inc. is able to provide a wide breadth of products to meet your specific project requirements.

Station Class Arresters

EVP, SVN and MVN Station Class Surge Arresters



- EVP arresters feature an enhanced sealing system and optimized material usage based on 20 plus years of polymer station arrester experience
- SVN arresters feature a silicone rubber housing, which is a lightweight, non-fragmenting alternative to porcelain housed designs
- MVN arresters feature a porcelain housing which provides over 70 years of field proven reliability

PDV-100 Optima®, Distribution Arresters

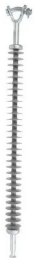
IEEE Heavy Duty/IEC Distribution High Polymer Housed Surge Arrester



- Over 35 years of excellent field performance with over 45 million distribution arresters installed
- Long lasting ESP™ housing material with superior mechanical strength and electrical characteristics
- Reliable capacitive disconnecter operates at fault currents as low as 1 Amp
- Dynamic triple sealing system protects internal components from moisture ingress to extend service lifetime

Quadri*Sil™ Transmission Insulators

High Voltage Polymer Line Post and Suspension Insulator



- Non-ceramic polymer insulators offer multiple advantages such as weight savings, improved contamination and flashover performance, and increased design versatility
- The redundant four seal system of the Quadri*Sil® polymer insulator design extends the life of our insulators with the highest level of sealing available in the industry
- The integral corona shielding ring (CSR) on every transmission polymer insulator end fitting provides superior protection both with or without an additional corona ring at lower voltage levels

Station Post Insulators

Polymer, Cast Epoxy and Porcelain Station Post Insulators



- Porcelain station post insulators:
 - Solid-core construction with gray porcelain glaze as standard
 - Long lasting durability with galvanized end caps and proven interface system
- Silicone (polymer) station post insulators:
 - Hydrophobic, silicone polymer for improved contamination performance
 - Lightweight and vandalism resistant compared to porcelain
- Cast cycloaliphatic epoxy station post insulators:
 - Meets or exceeds ANSI C29.8 and C29.9 standards for mechanical and electrical ratings
 - Solid-core construction with proprietary cycloaliphatic epoxy system
 - Encapsulated zinc plated steel inserts (optional brass or stainless-steel)
 - Offers rigidity like porcelain but lighter weight
 - Non-tracking, UV resistant material
 - Operating temperature range -50°C to 90°C



Metering, Reclosers and Capacitor Banks

Hubbell's Utility Automation products are the reliable choice for solar projects and their connection to the grid. Offering reclosers, sectionalizing switches, capacitor banks, and primary metering units, Utility Automation products will help you build a customized interconnection solution.



Liberty™ HB Series Pole-Mounted Three Phased Ganged Recloser

Pole-ready three-phase ganged recloser solutions with solid-dielectric vacuum breaker technology and integrated voltage and current sensors for advanced automation and switching applications.

- Convenient Install - Integrated ground sleeve Robust - Geometric bracing resists sidewall deflection
- Easy Access - Cut-away sides & Cover opens > 90°
- Durable - UV-stabilized gel coat ideal for coastal use
- Low Profile - At 24" burial depth
- NEMA 3R Rated



Medium Voltage Capacitor Banks

Pole or pad mount capacitor banks available in fixed or switched options. 5kV thru 35kV, 150 to 3600 kVAR.

- Custom designs available to meet specific project needs



Primary Metering

Pole or pad mount prewired primary metering compatible with a variety of transformers.

- Radial or loop fed circuits through 35kV with 200A bushing wells or 600A bushings. Options include: Meter socket & test switch
- Transformer
- Roof no-drip undercoating
- Wiring in conduit



Air-Insulated Switchgear (AIS)

Air-insulated, deadfront switching device used for sectionalizing underground distribution systems

- Available in 15kV and 25kV ratings and in a variety of switch/fuse configurations
- High security and durability, robust welded design, large viewing window to verify air break, easy access fuse doors, supports common fusing options
- Field replaceable components such as bushings, fault indicator viewing window.



Top-Hinge (TH) Sectionalizing Cabinet

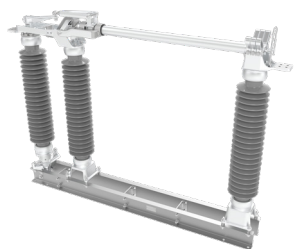
Ideal for sectionalizing and tap points in underground systems

- Available in various sizes and materials, suitable for single and three-phase systems from 15kV to 35kV
- High security and durability, robust welded design, easy installation and maintenance
- Meets ANSI/IEEE C57.12.28 standards, RUS listed, 15kV to 35kV models, wide variety of sizes and configurations
- Optional junctions and metal or fiberglass base and ground sleeves



Utility Switchgear

Group-operated disconnect switches are essential components within substation and transmission systems, offering crucial air gaps to ensure safe equipment isolation and adding flexibility for reliable, interconnected power grids. Hubbell's two brands, USCO and Turner Electric, are recognized throughout the industry for their time-tested products and innovative switchgear solutions. These two brands solidify Hubbell's reputation within the utility industry as a provider of reliable and forward-focused switchgear products.



AVR Aluminum Vertical Break Switch

The AVR provides minimized phase spacing, ideal for tight substation layouts. The blade rollover mechanism ensures maximum ice breakage and secure position within the jaw, further bolstered by reverse loop contacts with stainless-steel backup springs.

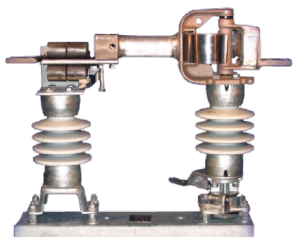
- Available in vee configuration with shortened base for smaller footprint (“AVRV”)
- Featuring our distinctive laminated shunt hinge, stainless steel bearings, and reverse loop contacts
- Includes USCO’s industry-leading ten year warranty
- Ratings: 8.3kV – 362kV, 1200A – 3200A



AGCH5 Aluminum Center Break Switch

The AGCH5 is ideal for deployment within vertically limited substation configurations. This design provides significant mechanical advantage for the user, making it well suited for higher rated needs.

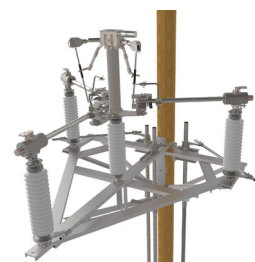
- Available in vee configuration for single beam or direct pole mounting (“AGCH5V”)
- Featuring our distinctive laminated shunt hinge, stainless steel bearings, and reverse loop contacts
- Includes USCO’s industry-leading ten year warranty
- Ratings: 8.3kV – 362kV, 1200A – 6000A



ASB Aluminum Side Break Switch

The ASB provides simple operation and long-term dependability. Designed for low side applications, it offers a cost-effective air break switch while maintaining the high quality features associated with the USCO brand.

- Operation is driven by rotation of the rear insulator which opens the blade out to the side
- Includes trademark USCO features: stainless steel bearings, laminated shunt, and reverse loop jaw contacts
- Ratings: 15.5kV – 72kV, 1200A – 2000A



TS2 Aluminum Side Break Switch

The TS2 offers speed-independent operation, ensuring the blade successfully seats inside a rugged jaw with reverse-loop contacts. Known as the “BearTrap” design, the switch employs a patented ramp and pin mechanism to ensure reliable performance with every operation.

- Available in 1-way, 2-way, and 3-way transmission configurations
- Includes UV-protected, high visibility blade position indicator for straightforward confirmation
- Also offered in fully-adjusted unitized mounting for direct pole installation after delivery
- Ratings: 15.5kV – 170kV, 600A – 2000A



Wildlife Mitigation

Substations serve as the electrical backbone of renewables. Ensuring electricity is reliably delivered requires safeguarding system assets from the risks posed by wildlife interactions. Hubbell offers Greenjacket® and Reliaguard® products to address this issue and to prevent costly power outages from occurring.

Wildlife-caused outages are preventable. We can help with that.

GREENJACKET®



Precise-Fit Substation Solutions

A Greenjacket solution is long-term, high-performance asset protection. Custom-designed to address wildlife risk in substations no matter what components and how they are configured.

Cover-up that fits correctly:

- Has a longer service life
- Maintains equipment ratings
- Remains in place
- Withstands wind and vibration
- Isn't susceptible to wildlife ingress
- Takes less time and personnel to apply
- Doesn't retain water
- Is less prone to installation errors

A different approach

Understanding context and risks are key to improving reliability

Distribution substations exist across varied environments and conditions. Mitigating wildlife interactions within them can be a complex challenge. Our team of trusted experts is ready to partner with you.



Wildlife contacts are the cause of up to 30% or more of all power outages. These unplanned outages can be very costly to both electric utilities and their connected customers, with an estimated annual economic impact up to \$18 billion. With over 60,000 substations and 6 million miles of distribution lines across North America, the risk of contact is high for unprotected systems.

Reliaguard has a comprehensive portfolio of wildlife guards to protect electric grid assets and prevent wildlife caused damage, power outages and possible wildfires. Guards are designed for ease of installation (many hotstickable) and incorporate exclusive features like 180° cable exits with overlapping fingers to prevent wildlife and insect ingress, multiple bottom opening sizes and robust glove-friendly loop latches.

140+ SKUs

- Substation & Distribution
- Guards
- Barrier Discs
- Deterrents
- Self-fusing Tape
- Conductor & Bus Cover
- One-box Solution Kits

Superior Performance

- UV Stable
- UL 94 V-0 Flame Retardant
- 90 mph+ Wind Retention



Anchoring

More than just a product - we pride ourselves in sharing our knowledge, our ideas and our resources. The CHANCE line of anchors and foundations comes with a rich history of teaching, training and application technique. Quality starts with rigorous standards in product design, manufacturing and delivery, and it continues with service, technical support and field support from experienced engineers.



Tough One® Anchor Helix Assemblies Hub (2-1/4" Square Inside)

Torque Ratings: 8,000 ft-lb and 10,000 ft-lb. Use 8,000 ft-lb Tough One Anchor in soft and medium-hard soils. Use High-Strength 10,000 ft-lb Tough One Anchor in hard soils

- The C10252 series of Tough One anchors have a smaller inside hub diameter than our C10250 series
- The smaller hub is designed to be installed with the Chance® Anchor Wrench C102158
- The anchor's sloped lead point improves penetration and helps soil flow from below the hub to above the anchor
- Tough One anchors use standard PISA® rods
- Tough One anchors are painted with black paint



Helical Anchors & Piles

The Round-Rod "RR" multi-helix anchors are used in areas where weak soil conditions exist and moderate holding capacities are required. All helix lead sections are 7 ft. long. Extension shafts may be required for installation to proper depth

- RR screw anchors consist of three galvanized components: Lead section, extension shaft (which includes an integral coupling), and the guy adapter. Each extension and guy adapter includes a high-strength bolt and nut



Helical Anchors & Piles

Chance square shaft helical piles are a high-torque, shaft-driven, multi-helix deep foundation. The solid steel square shafts range in size from 1.25" to 2.25" and provide the highest torque correlation factor of any pile type. Square shaft helical piles offer the lowest cost per kip at load ranges 50 kip or less due to their higher torque efficiency, lower material cost, and faster installation.

- SS screw anchors consist of three galvanized components: the lead section, the extension shaft, which includes an integral coupling, and the guy adapter. Extensions and guy adapters include a high-strength bolt and nut



Instant Foundation® for Pole Base Applications

Available in a variety of baseplate styles and sizes, Instant Foundations provide reliable, level support for foundation applications that require wiring.

- Variable bolt slots or holes for a variety of mounting options
- Cableway openings to easily feed wires into the fixture
- Simplified installation with no concrete
- Suitable for streetlights up to 50 feet high, roadway lighting, EV charging infrastructure, 5G/6G poles, solar array pole mount, and more.



Your partner to support clean and sustainable energy projects. Hubbell delivers the elements that improve efficiency, reliability, and sustainability so that you can harness the full potential of new power sources.

GET IN TOUCH:



www.hubbell.com/renewables



Hubbell Incorporated
40 Waterview Drive
Shelton, CT 06484



© 2025 Hubbell Incorporated. All rights reserved
Hubbell and the Hubbell logo are registered trademarks
or trademarks of Hubbell Incorporated.

CORP-HUBB-BR-EN-03439 | 05/2025