



PRO READY™



Product Solutions for Electrical Prefabrication





Your one source for **Electrical ProReady Solutions**

Prefabrication, or prefab, is the future of the commercial construction industry. Electrical contractors can preassemble electrical components in the shop before sending them to jobsites. ProReady™ products and assemblies make it easy. No further prep needed on site. It saves time, materials, and money.

Assembling components under controlled conditions helps you ensure quality control. Shipping assemblies to the jobsite reduces labor costs for both rough-in and trim-out stages of a project.

Benefit with RACO ProReady products:

- Lower material and jobsite labor costs
- Assembling components and wiring devices off-site maintains quality control
- Finish the rough-in phase of the job faster
- Minimizes jobsite packaging waste and scrap, clean up time, and theft

Additionally, our innovative products save time both in the shop and on site. Discover them on the following pages.



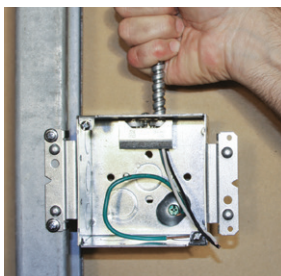
The unique installation efficiency of ProReady™ components save you time. Increase productivity in the shop or on the jobsite. Perfect for projects with repetitive wiring installs.

Square steel boxes with integrated STAB-IT® connectors terminate MC cable 3x faster. Contractors prove it in the field every day. A variety of the 4-11/16" and 4" styles cover a variety of applications.

Grand Slam boxes offer a clean solution for home run circuits. Adjustable, hinged and stud-mount mud rings provide installation versatility.

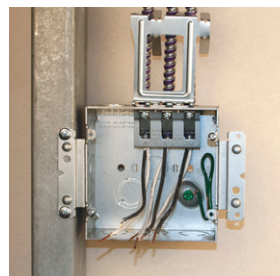
Table of Contents

Prefab Assemblies featuring 4" STAB-iT® boxes	6
Prefab Assemblies featuring 4-11/16" STAB-iT II boxes	8
Universal Stud Mount Bracket	10
Ultimate G Series Brackets	11
4" Square Boxes	14
4-11/16" Square Boxes	15
Upgraded Grand Slam Box with built-in STAB-iT II Connectors	16
Transition Box	18
AV Wall Boxes	18
Large Capacity Wall Boxes	19
BLOCK-LOC® Masonry Boxes	20
Braces and Brackets	21
Box and Cable Supports	23
4" and 4-11/16" Box Accessories	25
Box Supports - Ceiling	26
Crushed Corner Covers	27



STAB-IT CONNECTORS

- Install 3 TIMES FASTER
- Designed for quick installation of MC, AC, and HCF Cable
- 14/2 to 10/3 for most cable types
- UL Listed for use without a plastic anti-short bushing (except for AC Cable)



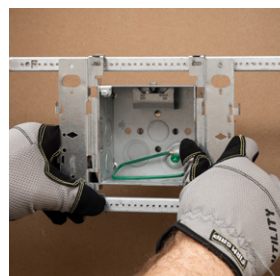
BOXES

- Available with built-in cable clamps
- With built-in box mounting brackets for steel or wood stud mounting
- Some boxes include far-side support
- Boxes include ground wires



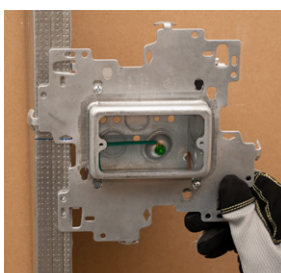
ADJUSTABLE MUD RINGS

- Adjustable after installation of wall coverings
- 1, 2, 3 Gang and round with 1/2" to 1-3/4" Adjustability
- Ring adjusting screws are covered, protecting wires within the box



NEW ULTIMATE G SERIES BRACKET

- Works with any 4" and 4-11/16" boxes and corresponding mud rings
- Mounts to any stud or 9030G open center bracket, hands free
- Gangable—just add boxes on either side



NEW UNIVERSAL STUD-MOUNT BRACKET

- Works with any 4" and 4-11/16" boxes and corresponding mud rings
- Snap to metal stud or to an open center bracket, hands free
- Use vertical or horizontal, gangable on either side of stud



NEW GRAND SLAM BOXES

- Easy homerun wiring
- Includes STAB-iT II Connectors
- Includes grounding bars
- With or without concentric knockouts



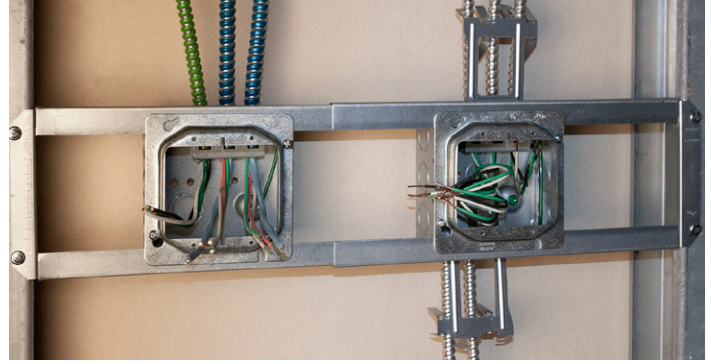
Prefab Assemblies featuring 4" STAB-iT® boxes



Save time and effort right out of the box!

Our preassembled components save time and labor. Ready to install on any jobsite with everything you need, right out of the box. Or prewire devices at your shop for even faster work onsite. ProReady prefab assemblies ensure quality while reducing material and labor costs, even jobsite packaging waste.

Assemblies feature 4" boxes with integrated STAB-iT connectors to secure MC cable quick and easy. Choose your mounting brackets, cable management clips, and mud rings. Solid #12 pigtails also included. Assemblies for power and data applications include a second standard 4" box with additional knockouts.



FEATURES

- All components preassembled, ready to install
- Open Center Brackets pre-set for either 16" or 24" studs
- STAB-IT 4" Boxes
 - Original STAB-IT connector holds 2 cables
 - Built-in cable management clips provides first means of support
 - Model ending in HF feature a Heavy Duty Universal Box Support
- Adjustable Mud Rings & Hinged Adjustable Mud Rings
 - 1/2" to 1-3/8" adjustability range
 - All screws inside the ring to eliminate damage from router
 - Adjustment screws visible and accessible after the device is installed
 - Hinged design allows easy and quick access for wiring
- For use on wood or metal studs
- Designed and assembled in USA
- UL Listed

AVAILABLE COMPONENTS

- 232MSCMHF: 4" Sq., 2-1/8" deep, (1) STAB-IT connector, M Bracket, Pigtail, Heavy Duty Universal Box Support, and Cable Management Clip
- 232SCM: 4" Sq., 2-1/8" deep, (1) STAB-IT connector, Pigtail and Cable Management Clip
- 231: 4" Sq., 2-1/8" deep, Raised Ground
- 9020R: Adjustable Open Center Bracket - 16" to 24"
- 773: 1G Fixed Mud Ring 3/4"
- 779: 2G Fixed Mud Ring 3/4"
- 768AMR: 1G Adjustable Mud Ring
- 769AMR: 2G Adjustable Mud Ring
- 768HAMR 1G Hinged Adjustable Mud Ring
- 769HAMR 2G Hinged Adjustable Mud Ring



FW1.1



FW1.7



FW1.9



FW4.1



FW4.7



FW4.9

Prefab 4" Square Box Assemblies

Catalog No.	Description	Cu. In. Capacity	Ctn. Qty.
FW1.1	232MSCMHF + 773 / 1G - Mud Ring, Raised 3/4" / M Bracket	30.3	12
FW1.7	232MSCMHF + 768HAMR/1G Hinged Adjustable Mud Ring/M Bracket	30.3	12
FW1.9	232MSCMHF + 768AMR / 1G -Adjustable Mud Ring / M Bracket	30.3	12
FW4.1	232MSCMHF + 779 / 2G - Mud Ring, Raised 3/4" / M Bracket	30.3	12
FW4.7	232MSCMHF + 768HAMR/2G Hinged Adjustable Mud Ring/M Bracket	30.3	12
FW4.9	232MSCMHF + 769AMR / 2G - Adjustable Mud Ring / M Bracket	30.3	12



Prefab 4" Square Box Assemblies

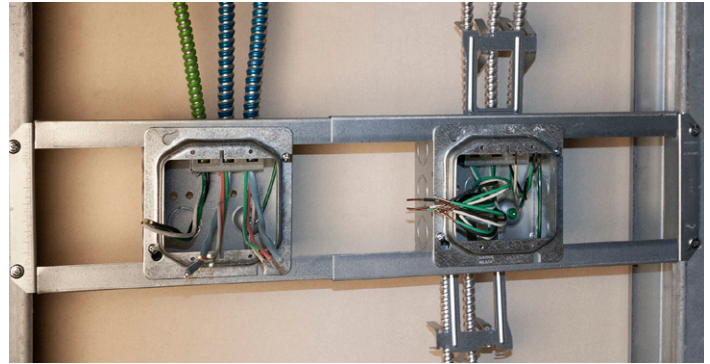
Catalog No.	Description	Cu. In. Capacity	Ctn. Qty.
FW2.1.16	9020R + 232SCM + 773 / 1G - Mud Ring, Raised 3/4" / 16" Studs	30.3	6
FW2.7.16	9020R + 232SCM + 768HAMR/1G Hinged Adjustable Mud Ring/16" Studs	30.3	6
FW2.9.16	9020R + 232SCM + 768AMR / 1G - Adjustable Mud Ring / 16" Studs	30.3	6
FW3.7.16	9020R + 232SCM + 231 + (2) 768HAMR/1G Hinged Adjustable Mud Ring/16" Studs	30.3 + 30.3	6
FW5.1.16	9020R + 232SCM + 779 / 2G - Mud Ring, Raised 3/4" / 16" Studs	30.3	6
FW5.7.16	9020R + 232SCM + 768HAMR/2G Hinged Adjustable Mud Ring/16" Studs	30.3	6
FW5.9.16	9020R + 232SCM + 769AMR / 2G - Adjustable Mud Ring / 16" Studs	30.3	6
FW3.1.16	9020R + 232SCM + 231 + (2) 773 / 1G - Mud Ring, Raised 3/4" / 16" Studs	30.3	6
FW3.9.16	9020R + 232SCM + 231 + (2) 768AMR / 1G - Adjustable Mud Ring / 16" Studs	30.3 + 30.3	6
FW6.1.16	9020R + (232SCM + 779) / 2G - Mud Ring, Raised 3/4" + (231 + 773) / 1G - Mud Ring, Raised 3/4" / 16" Studs	30.3 + 30.3	6
FW6.7.16	9020R + (232SCM + 768HAMR) 2G Hinged Adjustable Mud Ring + (231 + 769HAMR), 1G Hinged Adjustable Mud Ring/16" Studs	30.3 + 30.3	6
FW6.9.16	9020R + (232SCM + 869AMR) / 2G - Adj. Mud Ring + (231 + 768AMR) / 1G - Adj. Mud Ring / 16" Studs	30.3 + 30.3	6
FW2.1.24	9020R + 232SCM + 773 / 1G - Mud Ring, Raised 3/4" / 24" Studs	30.3	6
FW2.7.24	9020R + 232SCM + 768HAMR 1G Hinged Adjustable Mud Ring/24" Studs	30.3	6
FW2.9.24	9020R + 232SCM + 768AMR / 1G - Adjustable Mud Ring / 24" Studs	30.3	6
AW3.7.24	9020R + 232SCM + 231 + (2) 768HAMR/1G Hinged Adjustable Mud Ring/24" Studs	30.3 + 30.3	6
FW5.1.24	9020R + 232SCM + 779 / 2G - Mud Ring, Raised 3/4" / 24" Studs	30.3	6
FW5.7.24	9020R + 232SCM+ 769HAMR/2G Hinged Adjustable Mud Ring/24" Studs	30.3	6
FW5.9.24	9020R + 232SCM + 769AMR /2G - Adjustable Mud Ring / 24" Studs	30.3	6
FW3.1.24	9020R + 232SCM + 231 + (2) 773 / 1G - Mud Ring, Raised 3/4" / 24" Studs	30.3 + 30.3	6
FW3.9.24	9020R + 232SCM + 231 + (2) 768AMR / 1G - Adj. Mud Ring / 24" Studs	30.3 + 30.3	6
FW6.1.24	9020R + (232SCM + 779) / 2G - Mud Ring, Raised 3/4" + (231 + 773) / 1G - Mud Ring, Raised 3/4" / 24" Studs	30.3	6
FW6.7.24	9020R + (232SCM + 768HAMR) 2G Hinged Adjustable Mud Ring + (231 + 769HAMR), 1G Hinged Adjustable Mud Ring/24" Studs	30.3 + 30.3	6
FW6.9.24	9020R + (232SCM + 769AMR) / 2G - Adj. Mud Ring + (231 + 768AMR) / 1G - Adj. Mud Ring / 24" Studs	30.3	6

Prefab Assemblies featuring 4-11/16" STAB-iT® II boxes

Time savings with more room, right out of the box!

Our preassembled components save time and labor. Ready to install on any jobsite with everything you need, right out of the box. Or prewire devices at your shop for even faster work onsite. ProReady prefab assemblies ensure quality while reducing material and labor costs, even jobsite packaging waste.

Assemblies feature 4-11/16" boxes with integrated STAB-iT II connectors to secure MC cable quick and easy. Choose your mounting brackets, cable management clips, and mud rings. Solid #12 pigtails also included. Assemblies for power and data applications include a second standard 4-11/16" box with additional knockouts.



FEATURES

- All components preassembled, ready to install
- Open Center Brackets pre-set for either 16" or 24" studs
- STAB-IT II 4-11/16" Boxes
 - STAB-IT connector holds 3 cables
 - Built-in cable management clips provides first means of support
 - Model ending in HF feature a Heavy Duty Universal Box Support
- Adjustable Mud Rings & Hinged Adjustable Mud Rings
 - 1/2" to 1-3/8" adjustability range
 - All screws inside the ring to eliminate damage from router
 - Adjustment screws visible and accessible after the device is installed
 - Hinged design allows easy and quick access for wiring
- For use on wood or metal studs
- Designed and assembled in USA
- UL Listed

AVAILABLE COMPONENTS

- 252MSCMHF: 4-11/16" Sq., 2-1/8" deep, (1) STAB-IT II connector, M Bracket, Pigtail Heavy Duty Universal Box Support, and Cable Management Clip
- 252SCM: 4-11/16" Sq., 2-1/8" deep, (1) STAB-IT II connector, Pigtail and Cable Management Clip
- 265: 4-11/16" Sq., 2-1/8" deep, Raised Ground
- 9020R: Adjustable Open Center Bracket - 16" to 24"
- 838: 1G Fixed Mud Ring 3/4"
- 840: 2G Fixed Mud Ring 3/4"
- 868AMR: 1G Adjustable Mud Ring
- 869AMR: 2G Adjustable Mud Ring
- 843HAMR 1G Hinged Adjustable Mud Ring
- 818HAMR 2G Hinged Adjustable Mud Ring



AW1.1



AW1.7



AW1.9



AW4.1



AW4.7



AW4.9

Prefab 4-11/16" Square Box Assemblies

Catalog No.	Description	Cu. In. Capacity	Ctn. Qty.
AW1.1	252MSCMHF + 838 / 1G - Mud Ring, Raised 3/4" / M Bracket	42.0	12
AW1.7	252MSCMHF + 843HAMR/1G Hinged Adjustable Mud Ring/M Bracket	42.0	12
AW1.9	252MSCMHF + 868AMR / 1G -Adjustable Mud Ring / M Bracket	42.0	10
AW4.1	252MSCMHF + 840 / 2G - Mud Ring, Raised 3/4" / M Bracket	42.0	12
AW4.7	252MSCMHF + 818HAMR/2G Hinged Adjustable Mud Ring/M Bracket	42.0	12
AW4.9	252MSCMHF + 869AMR / 2G - Adjustable Mud Ring / M Bracket	42.0	10



Prefab 4-11/16" Square Box Assemblies

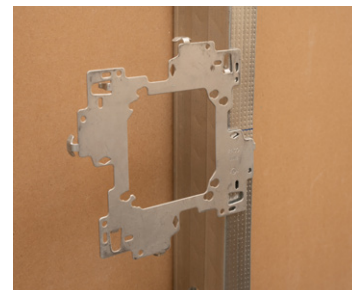
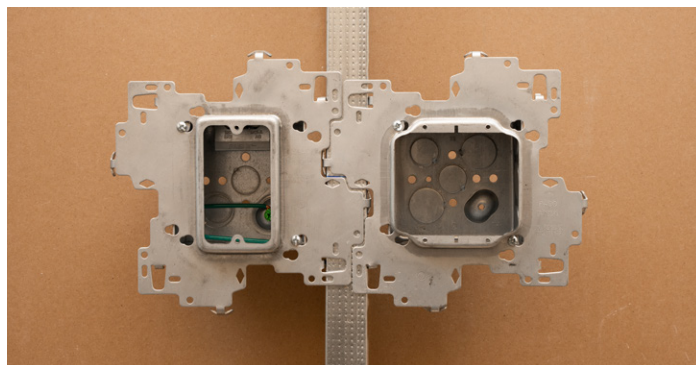
Catalog No.	Description	Cu. In. Capacity	Ctn. Qty.
AW2.1.16	9020R + 252SCM + 838 / 1G - Mud Ring, Raised 3/4" / 16" Studs	42.0	6
AW2.7.16	9020R + 252SCM + 843HAMR/1G Hinged Adjustable Mud Ring/16" Studs	42.0	6
AW2.9.16	9020R + 252SCM + 868AMR / 1G - Adjustable Mud Ring / 16" Studs	42.0	6
AW5.1.16	9020R + 252SCM + 840 / 2G - Mud Ring, Raised 3/4" / 16" Studs	42.0	6
AW5.7.16	9020R + 252SCM + 818HAMR/2G Hinged Adjustable Mud Ring/16" Studs	42.0	6
AW5.9.16	9020R + 252SCM + 869AMR / 2G - Adjustable Mud Ring / 16" Studs	42.0	6
AW3.1.16	9020R + 252SCM + 265 + (2) 838 / 1G - Mud Ring, Raised 3/4" / 16" Studs	42.0	6
AW3.7.16	9020R + 252SCM + 265 + (2) 843HAMR/1G Hinged Adjustable Mud Ring/16" Studs	42.0 + 42.0	6
AW3.9.16	9020R + 252SCM + 265 + (2) 868AMR / 1G - Adjustable Mud Ring / 16" Studs	42.0	6
AW6.1.16	9020R + (252SCM + 840) / 2G - Mud Ring, Raised 3/4" + (265 + 838) / 1G - Mud Ring, Raised 3/4" / 16" Studs	42.0 + 42.0	6
AW6.7.16	9020R + (252SCM + 818HAMR) 2G Hinged Adjustable Mud Ring + (265 + 843HAMR), 1G Hinged Adjustable Mud Ring/16" Studs	42.0 + 42.0	6
AW6.9.16	9020R + (252SCM + 869AMR) / 2G - Adj. Mud Ring + (265 + 868AMR) / 1G - Adj. Mud Ring / 16" Studs	42.0	6
AW2.1.24	9020R + 252SCM + 838 / 1G - Mud Ring, Raised 3/4" / 24" Studs	42.0	6
AW2.7.24	9020R + 252SCM + 843HAMR 1G Hinged Adjustable Mud Ring/24" Studs	42.0	6
AW2.9.24	9020R + 252SCM + 868AMR / 1G - Adjustable Mud Ring / 24" Studs	42.0	6
AW3.7.24	9020R + 252SCM + 265 + (2) 843HAMR/1G Hinged Adjustable Mud Ring/24" Studs	42.0 + 42.0	6
AW5.1.24	9020R + 252SCM + 840 / 2G - Mud Ring, Raised 3/4" / 24" Studs	42.0	6
AW5.7.24	9020R + 252SCM+ 818HAMR/2G Hinged Adjustable Mud Ring/24" Studs	42.0	6
AW5.9.24	9020R + 252SCM + 869AMR /2G - Adjustable Mud Ring / 24" Studs	42.0	6
AW3.1.24	9020R + 252SCM + 265 + (2) 838 / 1G - Mud Ring, Raised 3/4" / 24" Studs	42.0 + 42.0	6
AW3.9.24	9020R + 252SCM + 265 + (2) 868AMR / 1G - Adj. Mud Ring / 24" Studs	42.0 + 42.0	6
AW6.1.24	9020R + (252SCM + 840) / 2G - Mud Ring, Raised 3/4" + (265 + 838) / 1G - Mud Ring, Raised 3/4" / 24" Studs	42.0 + 42.0	6
AW6.7.24	9020R + (252SCM + 818HAMR) 2G Hinged Adjustable Mud Ring + (265 + 843HAMR), 1G Hinged Adjustable Mud Ring/24" Studs	42.0 + 42.0	6
AW6.9.24	9020R + (252SCM + 869AMR) / 2G - Adj. Mud Ring + (265 + 868AMR) / 1G - Adj. Mud Ring / 24" Studs	42.0 + 42.0	6

Universal Stud-mount Bracket

Add new levels of jobsite flexibility with our Universal Stud-mount brackets. Simply snap to metal stud or to the 9030G open center bracket for hands free installation. The design allows installation in a variety of way. These cost-effective brackets work with all RACO 4" or 4-11/16" boxes and mud rings to save time and effort.

FEATURES

- Snap to metal stud or to an open center bracket* makes installation hands free, saving time and increasing productivity
- Rigid bracket design eliminates the need for far-side support
- Ability to eliminate electrical boxes in low-voltage installations
- Can be mounted vertically or horizontally
- Mounts to either side of the stud and can be mounted side by side on the same stud
- Positive Posting Tabs ensure consistent alignment on stud
- Center window for accurate positioning
- Works with all box depths and stud sizes with no adjustment required
- Adjustable Mud Rings adjust from 1/2" to 1-3/8"
- cULus Listed



APPLICATIONS

RACO Universal Stud-mount Brackets provide secure support for 4" and 4-11/16" square boxes on metal studs.



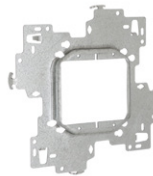
USMB



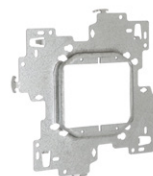
USMB134



USMB158



USMB234



USMB258



USMB1A



USMB2A

Universal Stud-mount Brackets

Catalog No.	Description	Ctn. Qty.	Carton Dimensions H x W x D (in.)	Carton 12of5
USMB	Universal Stud Mount Bracket	20	7.500 x 8.375 x 8.375	50050169985569
USMB134	Universal Stud Mount Bracket Single Device 3/4" Raised Mud Ring	20	8.500 x 8.250 x 12.375	50050169985576
USMB158	Universal Stud Mount Bracket Single Device 5/8" Raised Mud Ring	20	7.375 x 8.250 x 12.375	50050169985583
USMB234	Universal Stud Mount Bracket Two Device 3/4" Raised Mud Ring	20	8.500 x 8.250 x 12.375	50050169985590
USMB258	Universal Stud Mount Bracket Two Device 5/8" Raised Mud Ring	20	7.375 x 8.250 x 12.375	50050169985606
USMB1A	Universal Stud Mount Bracket Single Device Adjustable Mud Ring	20	8.875 x 9.750 x 14.000	50050169985620
USMB2A	Universal Stud Mount Bracket Two Device Adjustable Mud Ring	20	8.875 x 12.250 x 14.813	50050169985637

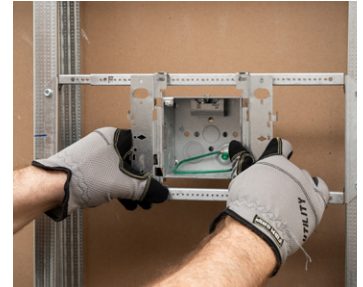
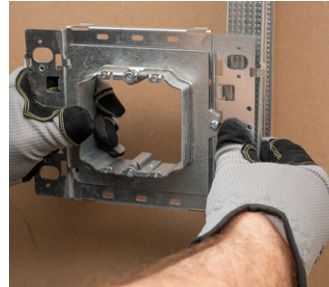
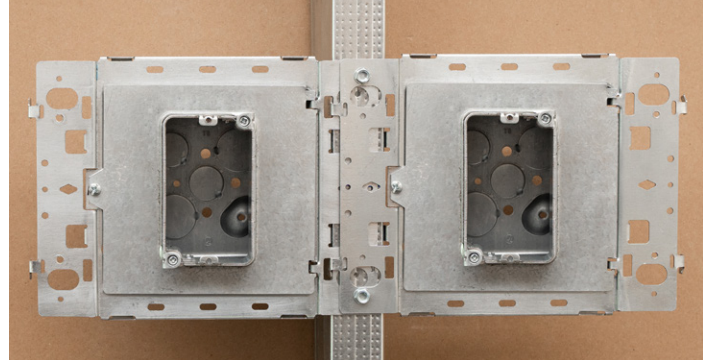
*Works with open center bracket item 9030G

Ultimate G Series Brackets

Maximize your flexibility and productivity with the Ultimate G series brackets. The gangable design saves time and effort on the jobsite, allowing for hands-free installation. Snap on to any stud or to the new open center bracket. Ideal for prefab applications.

FEATURES

- Snap to stud or open center bracket for hands-free installation
- Save time and increase productivity
- For low-voltage installations the bracket with integrated Hinged Adjustable Mud Ring can be used without electrical boxes
- Mounts to either side of the stud
- Gangable, making it easy to add boxes on either side
- Positive posting tabs ensure consistent alignment on the stud
- Center window for accurate positioning
- Works with all box depths and stud sizes with no adjustment required
- Available with integrated Hinged Adjustable Mud Rings
- 232GSCM and 252GSCM feature our STAB-iT® boxes with cable management



APPLICATIONS

Ideal for prefab applications, the Ultimate G series brackets work with both 4" boxes and mud rings or 4-11/16" boxes and mud rings, mount to studs or open center bracket.



9030GP

232GSCM

252GSCM

768HAMRGH

768HAMRG

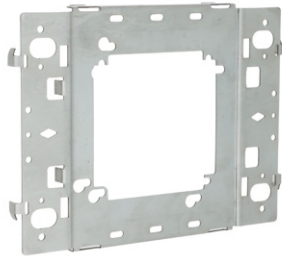
769HAMRG

9030G

995

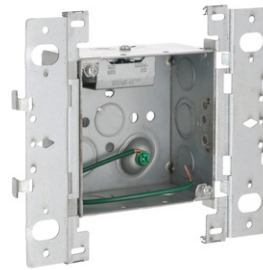
Ultimate G Series Brackets

Catalog No.	Description	Ctn. Qty.	Carton Dimensions Weight x H x W x D (in.)	Carton I2of5
9030GP	Ultimate G series mounting bracket	25	9.740 x 6.500 x 9.000 x 13.250	50050169985491
232GSCM	Ultimate G series mounting bracket with 4 In STAB-iT box	12	16.320 x 8.000 x 13.000 x 13.750	50050169985507
252GSCM	Ultimate G series mounting bracket 4-11/16 STAB-iT II box	12	19.900 x 8.000 x 13.000 x 15.125	50050169985514
768HAMRGH	Ultimate G series mounting bracket single device horizontal with HAMR	20	21.200 x 7.500 x 13.000 x 16x000	50050169985521
768HAMRG	Ultimate G series mounting bracket single device with HAMR	20	21.200 x 7.500 x 13.000 x 16x000	50050169985538
769HAMRG	Ultimate G series mounting bracket two device with HAMR	20	21.240 x 7.500 x 13.000 x 16x000	50050169985545
9030G	Open center bracket for G & S series	25	20.850 x 12.870 x 7.750 x 15.250	50050169985484
995	Box support bracket - Ultimate G series	50	5.470 x 4.875 x 4.750 x 7.750	50050169985552

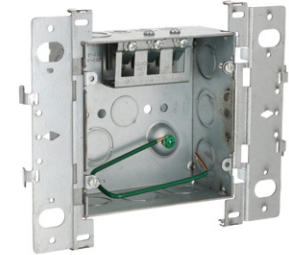


ULTIMATE MOUNTING BRACKET
9030GP

Ultimate G series brackets with RACO's STAB-iT® boxes



ULTIMATE MOUNTING BRACKET WITH 4" STAB-iT BOX
232GSCM

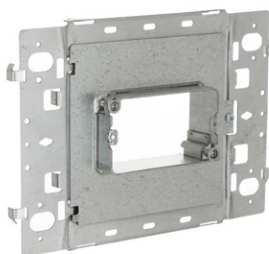


ULTIMATE MOUNTING BRACKET WITH 4 11/16" STAB-iT II BOX
252GSCM

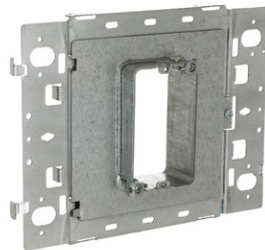
FEATURES & BENEFITS

- Works with any depth 4" and 4-11/16" boxes
- RACO's built in STAB-iT connectors are the fastest way to terminate MC cable
- Works with any 4" or 4-11/16" mud ring
- ProReady™ solutions offer installation flexibility, saving time and labor
- Clips to stud or 9030G open center bracket for hands-free installation
- Gangable, making it easy to add more boxes
- Contractor can decide how to use it at the job site

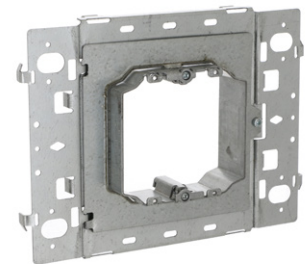
Ultimate G series brackets with RACO's exclusive hinged adjustable mud rings



ULTIMATE MOUNTING BRACKET SINGLE DEVICE HORIZONTAL WITH HINGED ADJUSTABLE MUD RING
768HAMRGH



ULTIMATE MOUNTING BRACKET SINGLE DEVICE WITH HINGED ADJUSTABLE MUD RING
768HAMRG



ULTIMATE MOUNTING BRACKET TWO DEVICE WITH HINGED ADJUSTABLE MUD RING
769HAMRG

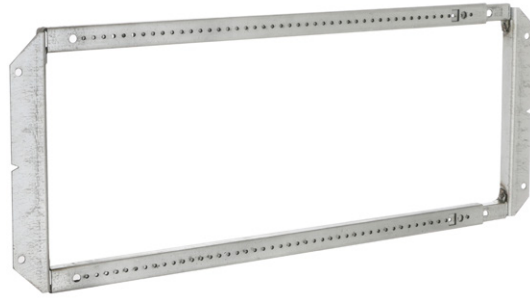
FEATURES & BENEFITS

- Works with any depth 4" and 4-11/16" boxes
- Includes RACO's exclusive Hinged Adjustable Mud Ring—adjusts from 1/2" to 1-3/8" for when you don't know what the finished wall depth will be
- Hinged design allows easy access to install conduit and wiring or for inspection
- Mounts to stud or 9030G open center bracket for hands-free installation
- Gangable, making it easy to add boxes on either side
- Contractor can decide how to use it at the job site

Ultimate G Series *Cont.*

Open center bracket

- Taller open center design, exclusively for Ultimate G series and Universal Stud Mount brackets
- Large opening allows multiple boxes to mount anywhere on the bracket
- Adjustable for 16" to 24" studs
- Rigid design eliminates the need for a box support in most cases
- Use on wood or metal studs



**OPEN CENTER
BRACKET FOR G & S SERIES**
9030G

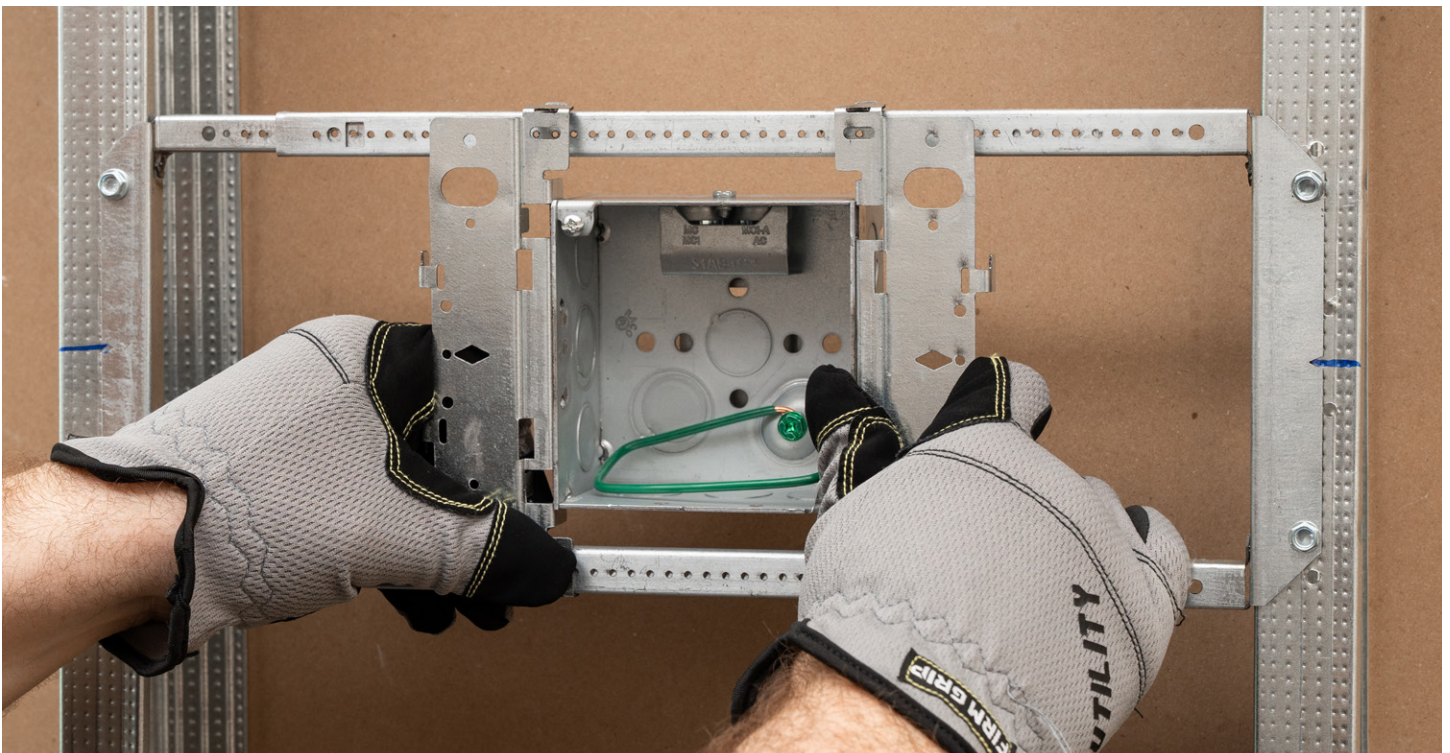
Optional G-bracket accessory



**BOX SUPPORT
BRACKET - ULTIMATE G SERIES**
995

Box support bracket

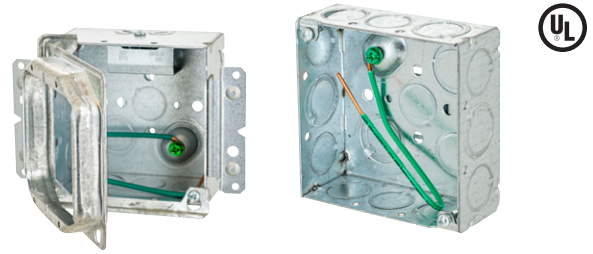
- Keeps bracket and box from moving during installation
- Adds stability to the bracket when installing on stud
- Exclusive design for the Ultimate G series
- Accommodates stud depth 3.5" to 6"
- Required in Canada



4" Square Boxes

Regular or STAB-IT® boxes

Our most popular boxes are available with our unique connectors built into the box. Terminate MC cable in one third the time of traditional clamps. Mounting brackets and cable management options offer the first means of support.



- 2-cable STAB-IT connectors install 3 times faster than traditional connectors
- Designed for quick installation of flex, MC, MCI, MCI-A, MC-PCS, AC, and HCF Cable
- STAB-IT boxes with CM offer first means of support
- 232MSCM & 232MS includes far-side support on back
- 232MSHF and 232MSCMHF feature a heavy duty universal bracket support
- Includes ground wires, box mounting brackets and cable clamps
- Easier installation for labor savings

Boxes - 4" Square, 2-1/8" deep. Construction - Welded steel with raised grounds. Capacity - 30.3 in.³

Catalog No.	Description	Side Knockouts			Bottom Knockouts	
		Concentric	TKO	Cable Pry-outs	Concentric	TKO
232	Standard	(8) 1/2"	(4) 1/2" - 3/4"	—	(2) 1/2"	(2) 1/2" - 3/4"
232SLD	Standard, 8" #12 solid ground pigtail	(10) 1/2"	(4) 1/2" - 3/4"	—	(2) 1/2"	(2) 1/2" - 3/4"
232SM	Standard 10" #12 stranded ground pigtail	(8) 1/2"	(4) 1/2" - 3/4"	—	(2) 1/2"	(2) 1/2" - 3/4"
232S*	(1) STAB-IT Connector, w/Pigtail	(6) 1/2"	(3) 1/2" - 3/4"	2	(1) 1/2"	(1) 1/2" - 3/4"
232MS	(1) STAB-IT Connector, M brkts., w/Pigtail & UBS	(6) 1/2"	(3) 1/2" - 3/4"	2	(1) 1/2"	(1) 1/2" - 3/4"
232MSHF	(1) STAB-IT Connector, M brkts., w/Pigtail & Heavy Duty UBS	(6) 1/2"	(3) 1/2" - 3/4"	2	(1) 1/2"	(1) 1/2" - 3/4"
232MSCMHF	(1) STAB-IT Connector, M brkts., w/Pigtail, Cable Mgmt. Clip & Heavy Duty UBS	(6) 1/2"	(3) 1/2" - 3/4"	2	(1) 1/2"	(1) 1/2" - 3/4"
232SCM*	(1) STAB-IT Connector, w/Pigtail, Cable Mgmt. Clip	(6) 1/2"	(3) 1/2" - 3/4"	2	(1) 1/2"	(1) 1/2" - 3/4"
232MSCM	(1) STAB-IT Connector, M brkts., w/Pigtail, Cable Mgmt. Clip & UBS	(6) 1/2"	(3) 1/2" - 3/4"	2	(1) 1/2"	(1) 1/2" - 3/4"
244MS	(2) STAB-IT Connectors on top, M brkts., w/Pigtail	(6) 1/2"	(3) 1/2" - 3/4"	2	(1) 1/2"	(1) 1/2" - 3/4"
244MSCM	(2) STAB-IT Connectors on top, M brkts., w/Pigtail, Cable Mgmt. Clips & UBS	(6) 1/2"	(3) 1/2" - 3/4"	4	(1) 1/2"	(1) 1/2" - 3/4"
244MSCMHF	(2) STAB-IT Connectors on top, M brkts., w/Pigtail, Cable Mgmt. Clips & Heavy Duty UBS	(6) 1/2"	(3) 1/2" - 3/4"	4	(1) 1/2"	(1) 1/2" - 3/4"
244MSHF	(2) STAB-IT Connectors on top, M brkts., w/Pigtail & Heavy Duty UBS	(6) 1/2"	(3) 1/2" - 3/4"	4	(1) 1/2"	(1) 1/2" - 3/4"
244S	(2) STAB-IT Connectors on top, w/Pigtail	(6) 1/2"	(3) 1/2" - 3/4"	4	(1) 1/2"	(1) 1/2" - 3/4"
244SCM	(2) STAB-IT Connectors on top, w/Pigtail, Cable Mgmt. Clips	(6) 1/2"	(3) 1/2" - 3/4"	4	(1) 1/2"	(1) 1/2" - 3/4"
248HS	(2) STAB-IT Connectors, H brkt., w/Pigtail, UBS	(4) 1/2"	(1) 1/2" - 3/4"	4	(1) 1/2"	—
248MS	(2) STAB-IT Connectors, M brkts., w/Pigtail, UBS	(4) 1/2"	(1) 1/2" - 3/4"	4	(1) 1/2"	—
248MSHF	(2) STAB-IT Connectors, M brkts., w/Pigtail, Heavy Duty UBS	(4) 1/2"	(1) 1/2" - 3/4"	4	(1) 1/2"	—
248S	(2) STAB-IT Connectors, w/Pigtail	(4) 1/2"	(1) 1/2" - 3/4"	4	(1) 1/2"	—

1 STAB-IT connector can accommodate up to 2 cables. 2 STAB-IT connectors can accommodate up to 4 cables.

* cULus Listed. All other models are UL Listed

Boxes - 4" Square, 1-1/2" deep. Capacity - 21 in.³ Use with standard cable connectors

Catalog No.	Description	Side Knockouts		Back Knockouts	
		Concentric	TKO	Concentric	TKO
189F	Welded steel, raised ground, 8" solid #12 ground pigtail	(8) 1/2"	(4) 1/2" - 3/4"	(2) 1/2"	(2) 1/2" - 3/4"
189SM	Welded steel, raised ground, 10" solid #12 ground pigtail	(8) 1/2"	(4) 1/2" - 3/4"	(2) 1/2"	(2) 1/2" - 3/4"
196	Welded steel, long side mounting brackets	(8) 1/2"	(4) 1/2" - 3/4"	(3) 1/2"	(2) 1/2" - 3/4"

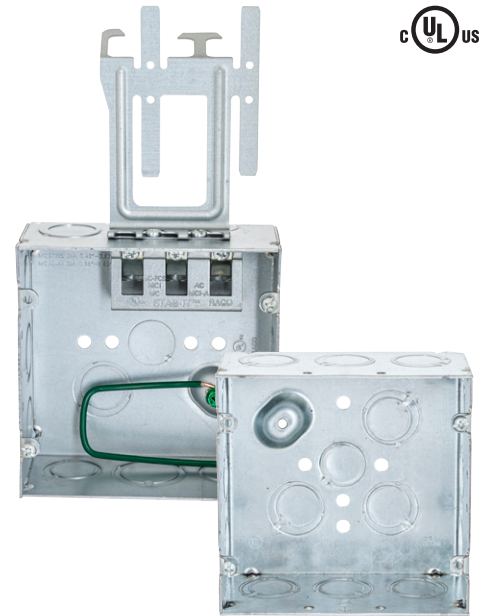
4-11/16" Square Boxes

Featuring STAB-IT® connectors



Large, welded boxes provide more room for wiring. Our exclusive integrated connectors are proven to terminate MC cable up to 3X faster than traditional clamps. It's easy: remove the priout, prep the cable, insert cable, done! Includes a knockout on the same side as the connectors. Mounting brackets and cable management options offer the first means of support.

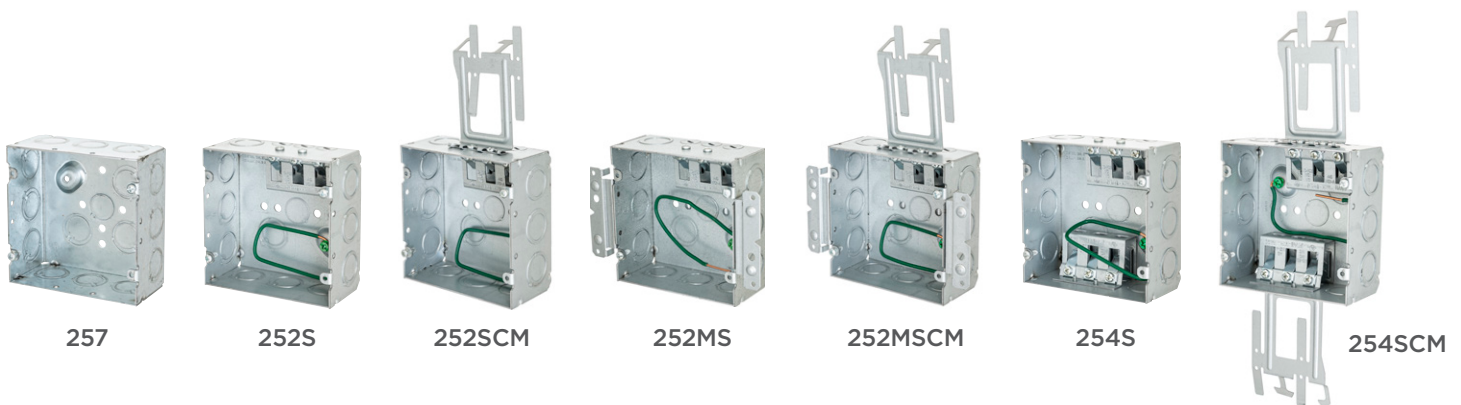
- 3-cable STAB-IT connectors install 3 times faster than traditional connectors
- Designed for quick installation of flex, MC, MCI, MCI-A, MC-PCS, AC, and HCF Cable
- All H & M SKU's have a far-side support and SKU's ending in HF have a heavy duty universal bracket support
- Includes ground wires, box mounting brackets and cable clamps
- Easier installation for labor savings



Boxes - 4-11/16" Square, 2-1/8" deep. Construction - Welded steel with raised grounds. Capacity - 42 in.³

Catalog No.	Description	Side Knockouts		Bottom Knockouts	
		TKO	Cable Pry-outs	Concentric	TKO
257	Standard	(12) 1/2" - 3/4"	—	(1) 1/2"	(3) 1/2" - 3/4"
252S*	(1) STAB-IT II Connector, w/Pigtail	(9) 1/2" - 3/4" (1) 3/4" - 1"	3	(1) 1/2"	(1) 1/2" - 3/4"
252SCM*	(1) STAB-IT II Connector, w/Pigtail, Cable Mgmt. Clip	(9) 1/2" - 3/4" (1) 3/4" - 1"	3	(1) 1/2"	(1) 1/2" - 3/4"
252MS*	(1) STAB-IT II Connector, M brkts., w/Pigtail & UBS	(9) 1/2" - 3/4" (1) 3/4" - 1"	3	(1) 1/2"	(1) 1/2" - 3/4"
252MSCM*	(1) STAB-IT II Connector, M brkts., w/Pigtail & Cable Mgmt. Clip & UBS	(9) 1/2" - 3/4" (1) 3/4" - 1"	3	(1) 1/2"	(1) 1/2" - 3/4"
252MSCMHF	(1) STAB-IT II Connector, M bracket, w/Pigtail, Cable Mgmt. Clip & Heavy Duty UBS	(9) 1/2" - 3/4" (1) 3/4" - 1"	3	(1) 1/2"	(1) 1/2" - 3/4"
252MSHF	(1) STAB-IT II Connector, M brkts., w/Pigtail, & Heavy Duty UBS	(9) 1/2" - 3/4" (1) 3/4" - 1"	3	(1) 1/2"	(1) 1/2" - 3/4"
254S*	(2) STAB-IT II Connectors, w/Pigtail	(8) 1/2" - 3/4"	6	(1) 1/2"	(1) 1/2" - 3/4"
254SCM*	(2) STAB-IT II Connectors, w/Pigtail & Cable Mgmt. Clips	(8) 1/2" - 3/4"	6	(1) 1/2"	(1) 1/2" - 3/4"
987	Heavy Duty Universal Box Support (UBS)	—	—	—	—

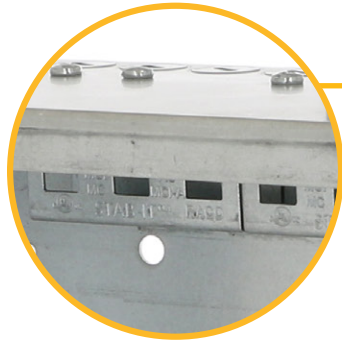
* cULus Listed. All other models are UL Listed



Upgraded Grand Slam Box with built-in STAB-iT® II Connectors



Better than a Home Run



STAB-iT® II connectors accept 3 cables and larger cable sizes

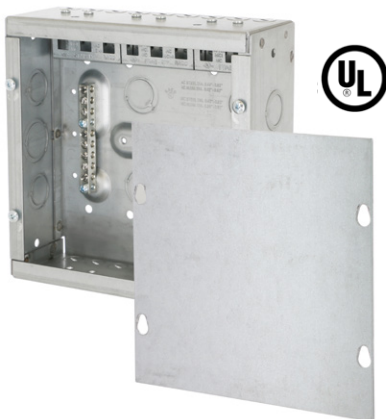


FEATURES

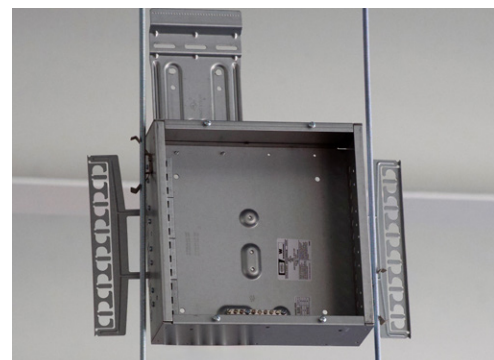
- STAB-iT II clamp has been field proven to be over 3X's faster than traditional MC connectors
- Ground bar pre installed
- Cable management with 2 multifunction clips
- Surface mount cover
- Available with and without concentric knockouts on side and back for easy access
- Optional conduit support plate
- NEMA 1 Rating for Indoors
- Additional STAB-iT II connectors can be added

APPLICATIONS

Grand Slam Box is the quickest and easiest way to terminate home runs branch circuits and other electrical wiring. Specifically designed for commercial applications, the Grand Slam Box offers both the flexibility and space desired in a junction box. Featuring our STAB-iT II connectors for MC, built-in ground bar, and cable management. The Grand Slam Box offers the most labor savings and flexibility of any home run box on the market.



Surface Mount Cover & Ground Bar Included



Grand Slam Box installed with multi-function clips on threaded rod

Grand Slam Box

Catalog No.	Description	Dimensions	Knockouts	Built-in STAB-IT® II Clamps	Cu. In. Cap.	Ctn. Qty.
GS883S	8" x 8" Junction Box (Surface Cvr. & Grnd. Bar Included)	8" x 8" x 3"	(12) 1/2" & 3/4" Concentric (5) 3/4" & 1" Concentric	3 (14/2 to 10/3) Up to 9 Cables	179	1
GS12124S	12" x 12" Junction Box (Surface Cvr. & Grnd. Bar Included)	12" x 12" x 4"	(12) 1/2" & 3/4" Concentric (9) 3/4" & 1" Concentric (8) 1" & 1-1/4" Concentric	4 (14/2 to 10/3) Up to 12 Cables	546	1
GS883SNK	8" x 8" Junction Box (No Knockouts, Surface Cvr. & Grnd. Bar Included)	8" x 8" x 3"	—	3 (14/2 to 10/3) Up to 9 Cables	179	1
GS12124SNK	12" x 12" Junction Box (No Knockouts, Surface Cvr. & Grnd. Bar Included)	12" x 12" x 4"	—	4 (14/2 to 10/3) Up to 12 Cables	546	1
GS883SCM	8" x 8" Junction Box (Cable management, Surface Cvr. & Grnd. Bar Included)	8" x 8" x 3"	(12) 1/2" & 3/4" Concentric (5) 3/4" & 1" Concentric	3 (14/2 to 10/3) Up to 9 Cables	179	1
GS12124SCM	12" x 12" Junction Box (Cable management, Surface Cvr. & Grnd. Bar Included)	12" x 12" x 4"	(12) 1/2" & 3/4" Concentric (9) 3/4" & 1" Concentric (8) 1" & 1-1/4" Concentric	4 (14/2 to 10/3) Up to 12 Cables	546	1
GS883SNKCM	8" x 8" Junction Box (No Knockouts, Cable management, Surface Cvr. & Grnd. Bar Included)	8" x 8" x 3"	—	3 (14/2 to 10/3) Up to 9 Cables	179	1
GS12124SNKCM	12" x 12" Junction Box (No Knockouts, Cable management, Surface Cvr. & Grnd. Bar Included)	12" x 12" x 4"	—	4 (14/2 to 10/3) Up to 12 Cables	546	1



CABLE TYPES AND RANGES OF STAB-IT® II CLAMP

Cat. No.	Description	Carton Qty.	Cable Type	Cable Range	Cable Range Diameter
9100SP	Grand Slam conduit support plate	10	AC Steel & Aluminum HCF AC Steel	14-2, 14-3, 14-4, 12-2, 12-3, 12-4, 10-2, 10-3 14-2, 14-3, 14-4, 12-2, 12-3, 10-2, 10-3	0.44" · 0.62"
989ST2	STAB-IT® II Connector (accepts 2 cables) Works with all Grand Slam boxes	50	HCF AC Aluminum MC Steel & Aluminum MCI-A Steel & Aluminum HCF MCI-A Steel HCF MCI-A Aluminum	12-2, 12-3, 12-4, 10-2, 10-3 14-2, 14-3, 14-4, 12-2, 12-3, 12-4, 10-2, 10-3 14-2, 14-3, 14-4, 12-2, 12-3, 12-4, 10-2, 10-3 12-2, 12-3, 10-2 14-2, 14-3, 14-4, 12-2, 12-3, 12-4, 10-2, 10-3	0.42" · 0.62" 0.38" · 0.62"
3/8 TRADE SIZE FLEX. RWFCM CONDUIT STEEL & ALUMINUM Anti Short Bushing Required					
CABLE RANGE .400" DIA. MIN. TO .605" DIA. MAX.					



Conduit Support Plate
(sold separately)



STAB-IT II Connector

Cable Armor must comply with NEC 250.96

To remove cable unscrew clamp from the box then pull clamp off cable.

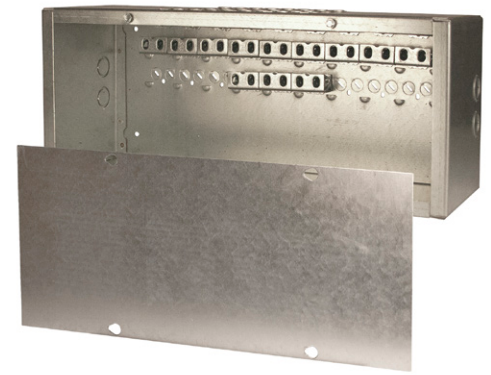
To install more cables use any of the RACO 38RAC or 40RAC push-in cable connectors

Transition Box



Transition from MC to conduit easily before entering a load center. The box delivers more labor savings and installation flexibility than any transition box on the market. Built-in STAB-IT® clamps quickly terminate MC and concentric knockouts provide for 3/4" or 1" conduit to the panel.

- Designed for quick installation of flex, MC, MCI, MCI-A, AC and HCF cable
- STAB-IT clamp proves over 3X's faster than traditional MC connectors
- Room to add up to six additional STAB-IT connectors
- Accepts cable sizes from 14/2 up to 10/3 for most cable types



Transition Box

Catalog No.	Description	Dimensions	Knockouts	Built-in STAB-IT Clamps
SC082006STRC	8" x 20" Transition Box (cover included)	8" x 20" x 6"	(4) 3/4" & 1" Concentric	21 (14/2 to 10/3) Up to 42 cables

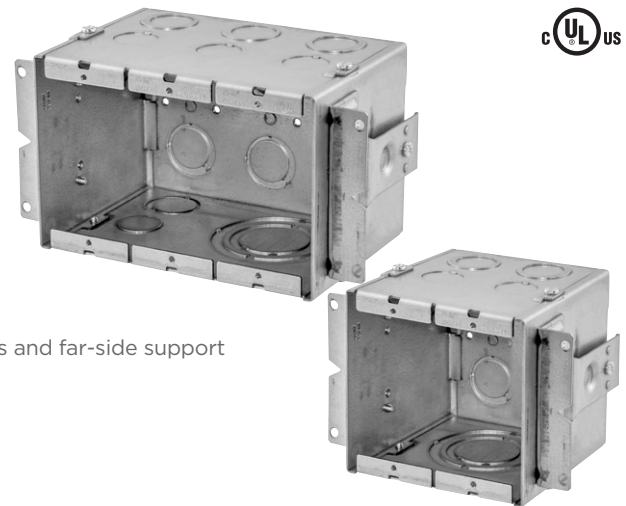
AV Wall Boxes



Gangable boxes

Oversized in-wall boxes deliver data, AV, and power side-by-side. Mount independently or ganged together for multiple devices. Perfect for Cat6 and fiber optic cables with a larger bend radius.

- 4" depth accepts any device
- Suitable for masonry application
- Knockouts from 1/2" up to 2"
- Adjustable stud mounting brackets and far-side support
- Accepts low voltage partition
- NEMA spaced device mounting, accepts industry standard wallplates



Gangable AV Wall Boxes

Catalog No.	Description	Knockouts		
		Top	Bottom	Back
985	2-Gang, 2 in. KO, 54 in ³ capacity, 4.21" x 4.06" x 4"	(2) 1/2" (2) 1/2" - 3/4" TKO	(1) 1", 1-1/4", 1-1/2", 2"	(2) 1/2" - 3/4"
986	3-Gang, 2 in. KO, 79 in ³ capacity, 4.21" x 5.87" x 4"	(3) 1/2" (3) 1/2" - 3/4" TKO	(1) 1/2" (1) 1/2" - 3/4" TKO (1) 1", 1-1/4", 1-1/2", 2"	(3) 1/2" - 3/4"
987	4-Gang, 2 in. KO, 104 in ³ capacity, 4.21" x 7.69" x 4"	(4) 1/2" (4) 1/2" - 3/4" TKO	(1) 1/2" (1) 1/2" - 3/4" TKO (2) 1", 1-1/4", 1-1/2", 2"	(4) 1/2" - 3/4"
988	6-Gang, 2 in. KO, 154 in ³ capacity, 4.21" x 11.31" x 4"	(6) 1/2", (6) 1/2" - 3/4" TKO	(1) 1/2" (1) 1/2" - 3/4" TKO (2) 1", 1-1/4", 1-1/2", 2"	(6) 1/2" - 3/4"

Low Voltage AV Wallbox Partition

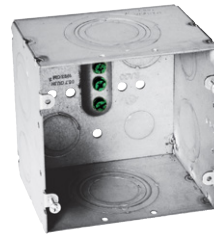
Catalog No.	For Use With	Type
989	985, 986	Low voltage partition



Large Capacity Wall Boxes

One, two or three gang boxes

Oversized two or three gang boxes and mud rings are perfect for AV, data, and power applications. Extra-large knockouts for pulling pre-terminated cables.



- Designed to deliver power and low voltage in the same box
- Use standard mud rings and wallplates
- 2" knockout feed-thru
- 3/4" depth accommodates large cables and bend radii

2-Gang Large Capacity Wall Boxes

Boxes are 4-11/16" square, 3-1/4" deep. The boxes have 66.7 in³. capacity. Use with industry standard 4-11/16" square mud rings for 1- or 2-gang applications.

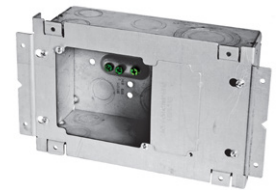
Catalog No.	Description	Side Knockouts		Back Knockouts
		Concentric	TKO	TKO
260	Standard	(2) 1/2"	(2) 3/4" - 1" (2) 1" - 1-1/4"	(2) 3/4" - 1" (2) 1" - 1-1/4"
260H	With mounting brackets	(2) 1/2"	(2) 3/4" - 1" (2) 1" - 1-1/4"	(2) 3/4" - 1" (2) 1" - 1-1/4"



3-Gang Large Capacity Wall Boxes

Boxes are 4-11/16" H, 7-3/4" W, 3-1/4" D. The boxes have 66.7 in³. capacity. Use with industry standard 4" square mud rings for 1- or 2-gang applications.

Catalog No.	Description	Side Knockouts		Back Knockouts
		Concentric	TKO	TKO
263	Square 2- or 3-gang wall box	(2) 1/2"	(2) 1/2" - 3/4" (4) 3/4" - 1" (2) 1" - 1-1/4"	(2) 1/2" - 3/4" (2) 3/4" - 1" (2) 1" - 1-1/4"



Mud Rings

Catalog No.	Type	For Use With	Height	Capacity (In. ³)
818	2-gang mud rings	260	5/8"	7.3
779			3/4"	8.8
819			1"	12.0
820			1-1/4"	15.0
792	3-gang mud rings	263	1/2"	10.1
793			5/8"	12.3
794			1-1/4"	24.3



Low Voltage Partition

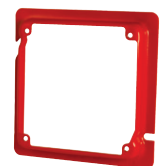
Catalog No.	Type	For Use With	Mud Ring Depth
981	Solid Divider	260, 263	5/8", 3/4", 1-1/4"



4-11/16" Square 2 Device and Tile Cover

For Life Safety Appliances, Emergency Exit Signs, and Speaker Strobe Applications

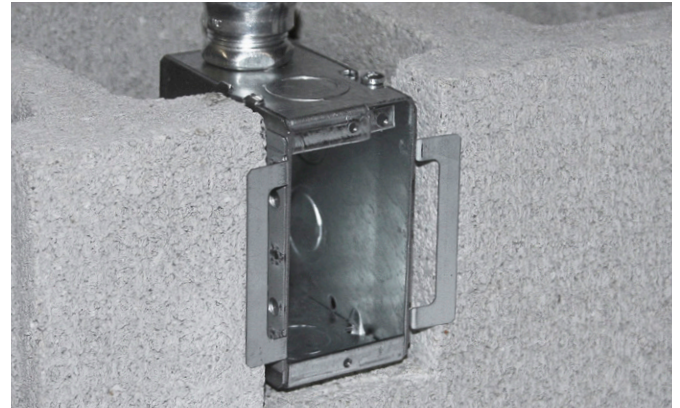
Catalog No.	Description	Cubic In. Cap (cm ³)
911-16	Raised 5/8", painted red	8.3 (136.0)



BLOCK-LOC® Masonry Boxes

Self-positioning masonry boxes quickly and accurately lock into position and hold during the construction process, even in irregular cut openings. Includes break-off front tabs. Use for power and data outlets.

- 1-4 gang welded and gangable 3-1/2" deep boxes
- Tile covers for 4" sq and 4-11/16" sq are 2" deep
- Galvanized steel construction



BLOCK-LOC® Masonry Boxes

Catalog No.	Description	Cu. In. Capacity	Ctn. Qty.	Knockouts		
				Top	Bottom	Back
689B	3-1/2" Deep Single-Gang, Gangable	22.5	22.5	4 TKO	4 TKO	4 TKO
695B	3-1/2" Deep Single-Gang, Welded	22.5	22.5	4 Conc.	4 Conc.	4 Conc.
696B	3-1/2" Deep Two-Gang, Welded	45.0	45.0	4 Conc.	4 Conc.	4 Conc.
697B	3-1/2" Deep Three-Gang, Welded	67.3	67.3	4 Conc.	4 Conc.	4 Conc.
698B	3-1/2" Deep Four-Gang, Welded	89.8	89.8	4 Conc.	4 Conc.	4 Conc.
786B	4" Sq. Single-Gang Tile Cover, 2" Deep	14.5	14.5	—	—	—
796B	4" Sq. Two-Gang Tile Cover, 2" Deep	20.5	20.5	—	—	—
899B	4-11/16" Sq. Single-Gang Tile Cover, 2" Deep (Not UL Listed)	16.0	16.0	—	—	—



689B



695B



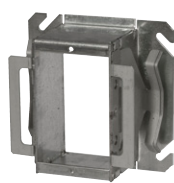
696B



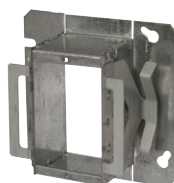
697B



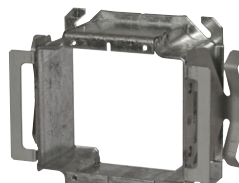
698B



786B



899B



796B

Braces and Brackets



9004R - 9006R, 9013R - 9015R

Braces and extenders for positioning boxes between metal or wood studs

- Available for 1-1/2" or 2-1/8" deep boxes
- Location dimples on face of bar allows for exact positioning
- Dimple feature provides quick start of screws, and reinforcement to prevent box mounting screws from stripping out when box is mounted
- Design allows ground screw to clear when box is mounted
- Boxes attach easily with self-tapping screws

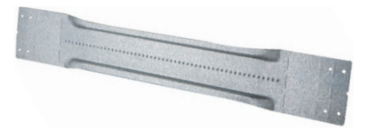
Non-adjustable Box Mounting Brace

Catalog No.	For Use With	Type	Box Mounting
9004R	4" and 4-11/16" boxes, cULus	For 1-1/2" or 2-1/8" deep box	16"
9006R			24"



Adjustable Box Mounting Brace

Catalog No.	For Use With	Type	Box Mounting
9015R	4" and 4-11/16" boxes, cULus	For 1-1/2" or 2-1/8" deep box	15" to 16"



Braces and Brackets *Cont.*

9001

Position electrical boxes, mud rings, and low voltage devices between studs

- Fold-back stabilizer leg prevents bracket from being pushed back in wall cavity during drywall installation
- Designed for 2-1/2" or 3-1/2" studs
- Mounts 4" or 4-11/16" sq. boxes
- Provides maximum work area inside box
- Mounts to within 1/16" of drywall every time

Fixed Position Box Mounting Brackets

Catalog No.	For Use With	Type	Box Mounting
9001	4" and 4-11/16" boxes	For 3 boxes	16" O.C.



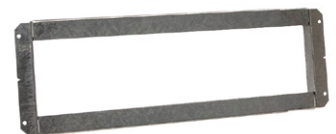
9020R

Extra features make positioning and adjusting boxes and mud rings between studs easy

- Accepts both 4" and 4-11/16" square boxes and mud rings
- Opening gives installer flexibility positioning box between studs
- Features built-in first means of support for securing and supporting flex and armored cable
- Built-in ruler to aid in alignment of electrical box
- 9020R is adjustable, rigid enough to eliminate far-side support

Open Center Box Support Brackets

Catalog No.	For Use With	Type	Box Mounting
9020R	4" and 4-11/16" boxes, cULus	Open wall adjustable box bracket	16" to 24"



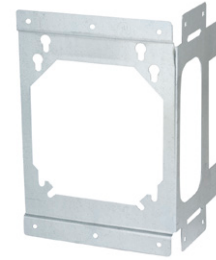
Box and Cable Supports

Two-point Box Mounting Bracket

Supports electrical box when mounted to a stud

Catalog No.	For Use With	Mounting
9018	4" or 4-11/16" sq. box	Stud

- Dual-point mounting, right or left of stud
- Mounts 4" or 4-11/16" sq. box to 2-1/2", 3-1/2" or 6" studs



BOX-LOC® Metal Stud Clip

Supports electrical box when mounted to a stud.

Catalog No.	For Use With	Mounting
980	4" or 4-11/16" sq. box	Spring steel bracket

- Allows any 4" or 4-11/16" square metal box to be affixed to a metal stud quickly and easily

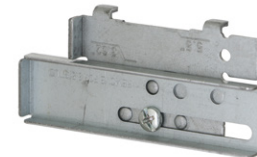


Far Side Support

Adds far side support to electrical box when mounted to a stud.

Catalog No.	For Use With	Mounting
978	4" or 4-11/16" sq. box	Box support
987		Heavy duty universal box support

- Allows any 4" or 4-11/16" square metal box to be affixed to a metal stud quickly and easily



4" and 4-11/16" Box Accessories

Mud rings

Use our steel raised covers, mud rings, and extensions to mount switches and receptacles at the correct depth once drywall is installed. Low voltage partitions can be added to boxes with these covers to divide power from voice/data connections.

- Standard 1 & 2 gang mud rings
- Angled mounting slots compensate up to 12° for box misalignment
- Raised covers add cubic capacity to the box



Mud Rings

Catalog No.	For Use With	Type	Raised Height	Capacity (In. ³)	Listing
843	4-11/16" boxes	1-gang	5/8"	4-1/2	cULus
842			1-1/4"	9-1/2	
841		2-gang	1/2"	5.5	
818			5/8"	7.3	
779			3/4"	8.8	
819			1"	12.0	
820			1-1/4"	15.0	
768			1-gang	5/8"	
768H	1-gang, hinged	5.5			
775	4" boxes	1-gang	1-1/4"	9.5	cULus
769		2-gang	5/8"	7.3	
769H		2-gang, hinged		8.3	
781		2-gang	1-1/4"	15	cULus

Adjustable Mud Rings and Hinged Adjustable Mud Rings

For 4" and 4-11/16" square boxes

ProReady™ flexibility provides a fast, flush fit every time! Steel adjustable mud rings match the drywall depth after installation. Hinged models allow devices to be mounted during prefab, then swing out of the way for wiring onsite. Use our protector plates to protect devices during drywall install, remove them during trim out. Maintain code-compliant in every installation. Great for use with ceramic tile.

- 1 & 2 gang versions
- 1/2" to 1-3/8" adjustability range
- Adjustment screws remain visible and accessible after device is installed
- All screws are inside of ring to eliminate damage from drywall router
- 2-gang designs allow cover to be installed without removing box screws
- For use with 2-1/8" boxes
- Unique hinged design can be opened in the field, allowing quick and easy access for wiring



Mud Rings

Catalog No.	For Use With	Type	Raised Height	Capacity (In. ³)	Listing
868AMR	4-11/16" boxes	1-gang, adjustable	1/2" to 1-3/8"	4 to 9-1/2	UL
869AMR		2-gang, adjustable		8 to 15-1/2	
843HAMR		1-gang, hinged adjustable		4 to 9-1/2	cULus
818HAMR		2-gang, hinged adjustable		8 to 15-1/2	
768AMR	4" boxes	1-gang, adjustable	1/2" to 1-3/8"	4 to 9-1/2	UL
769AMR		2-gang, adjustable		8 to 15-1/2	
768HAMR		1-gang, hinged adjustable		4 to 9-1/2	cULus
769HAMR		2-gang, hinged adjustable		8 to 15-1/2	
756AMR		Adj. round for 4" sq. box		4.4 to 10.5	UL
822AMR	942 box	3-gang, adjustable	1/2" to 1-3/8"	11.0 to 20.0	

Crushed Corner Covers

Square Metallic Exposed Work Covers



Use RACO's surface covers to support switches or receptacles with boxes in surface mount or exposed work applications.

FEATURES

- Exposed work covers include screws and nuts where required
- Exposed work covers meet the requirements of the 2020 NEC Article 250.146 (A)
- No bonding jumper is required for covers with: (1) Crushed corners (2) Two or more device attachment fasteners that are permanent with thread-locking, screws, or nut-locking means (3) Insulating retaining washer removed for at least one device attachment screw

SPECIFICATIONS

- For use with 4" boxes
- 6.5 in³ capacity (106.5 cm³)
- UL Listed

4" Square Crushed Corner Covers - Raised 1/2"

Catalog No.	Description
800C	1 Toggle Switch
801C	1 Receptacle 1.406" Dia.
803C	2 Toggle Switches
804C	Blank, No Holes
805C	1 Toggle Switch and 1 Receptacle 1.406" Dia.
806C	1 Duplex and 1 Receptacle 1.406" Dia.
807C	2 Receptacles 1.406" Dia.
808C	1 GFCI
808U	1 GFCI, 3-in-1 Plates
809C	2 GFCI
809U	2 GFCI, 6-in-1 Plates
810C	30A-50A Receptacle 2.141" Dia.
811C	30A Locking 1.719" Dia.
811U	1 Round Device: 1.406", 1.620" or 1.719" Dia.
812C	20A Receptacle 1.620" Dia.
813C	30-60A Receptacle 2.625" Dia.
814C	1 GFCI and 1 Toggle Switch
831C	1 Duplex, 1 20A, 1.620" Dia.
902C	1 Duplex Receptacle
906C	1 Duplex Receptacle and 1 Toggle Switch
907C	2 Duplex Receptacles
915C	1 GFCI and 1 Duplex Receptacle

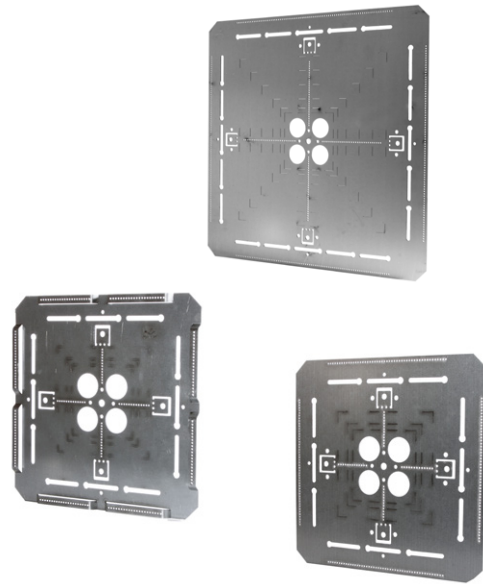




Box Supports – Ceiling

Quickly hang electrical boxes in overhead commercial or industrial applications. Provides box support and positioning for conduit exiting the box. Create a clean, organized, and strong installation that saves time and materials compared to traditional suspended procedures.

- Mount horizontally or vertically from a single 3/8" threaded rod
- Bendable tabs secure plate in vertical installation
- Multiple markings for easier box alignment
- Pre-punched holes for rear raceway access
- Holes and slots provide limitless options for clamp or strap installation
- Lanced feature on 9112RL for easier one-hole strap installation
- Constructed of 16 gauge galvanized steel



Square Box and Conduit Hangers

Catalog No.	For Use With	Size	Mounting
9112R	Accommodates multiple 4" sq. or larger boxes, up to 12" sq.	12" x 12"	Ceiling
9112RL			
9118R*		18" x 18"	

*Includes Grand Slam junction box



www.hubbell.com/raco
+1 (800) 992-7030
racocustomerservice@hubbell.com



A proud member of the Hubbell family.

©2024 RACO. All Rights Reserved.
Hubbell and the Hubbell logo are registered trademarks or
trademarks of Hubbell Incorporated.
All other trademarks are the property of their respective owners.
Specifications subject to change.

EP-RACO-BR-EN-00463 05/24