



PRO READY™



Product Solutions for Electrical Prefabrication



Your one source for **Electrical ProReady Solutions**

Pre-fabrication, or prefab, is the future of the commercial construction industry. Electrical contractors can pre-assemble electrical components in the shop before sending them to jobsites. ProReady products and assemblies make it easy. No further prep needed on site. It saves time, materials, and money.

Assembling components under controlled conditions helps you ensure quality control. Shipping assemblies to the jobsite reduces labor costs for both rough-in and trim-out stages of a project.

Single Source Solution

All you need is a workbench and basic tools, along with components shipped direct to you. RACO's ProReady line gives you one source for electrical prefab components. It streamlines the process for you and eliminates errors when ordering:

- Electrical boxes
- Mounting brackets
- Cable management
- Mud rings

Benefit with RACO ProReady products:

- Lower material and jobsite labor costs
- Pre-wiring devices off-site maintains quality control
- Finish the rough-in phase of the job faster
- Minimizes jobsite packaging waste and scrap, clean up time, and theft

Additionally, our innovative products save time both in the shop and on site. Discover them on the following pages.



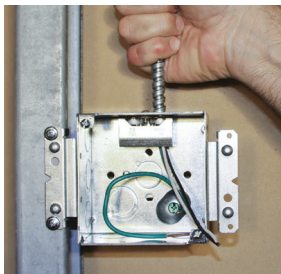
The unique installation efficiency of ProReady components save you time. Increase productivity in the shop or on the jobsite. Perfect for projects with repetitive wiring installs.

Square steel boxes with integrated STAB-IT connectors terminate MC cable 3x faster. Contractors prove it in the field every day. A variety of the 4-11/16" and 4" styles cover a variety of applications.

Grand Slam boxes offer a clean solution for home run circuits. Adjustable, hinged and stud-mount mud rings provide installation versatility.

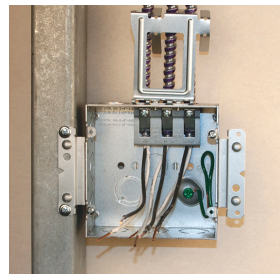
Table of Contents

4" Square Boxes	4
4-11/16" Square Boxes	5
Grand Slam Junction Boxes	6
Transition Box	7
AV Wall Boxes	7
Large Capacity Wall Boxes	8
BLOCK-LOC® Masonry Boxes	9
4" STAB-IT® Box Assemblies for Pre-Fab	10
4-11/16" STAB-IT® II Box Assemblies for Pre-Fab	12
Braces and Brackets	14
Box and Cable Supports	15
4" and 4-11/16" Box Accessories	17
Box Supports - Ceiling	18
Crushed Corner Covers	19



STAB-IT CONNECTORS

- Install 3 TIMES FASTER
- Designed for quick installation of MC, AC, and HCF Cable
- 14/2 to 10/3 for most cable types
- UL listed for use without a plastic anti-short bushing (except for AC Cable)



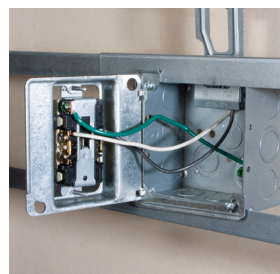
BOXES

- Available with built-in cable clamps
- With built-in box mounting brackets for steel or wood stud mounting
- Some boxes include far-side support
- Boxes include ground wires



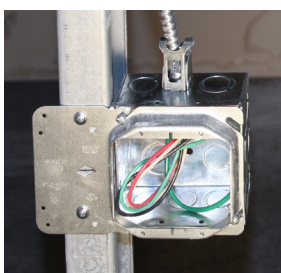
ADJUSTABLE MUD RINGS

- Adjustable after installation of wall coverings
- 1, 2, 3 Gang and round with 1/2" to 1-3/4" Adjustability
- Ring adjusting screws are covered, protecting wires within the box



HINGED MUD RINGS

- Hinged mud rings for easy wiring access
- Available for 4" Square Boxes in 1 and 2-Gangs
- 5/8" Depth
- Can be used with Box Mounting Brackets



STUD MOUNT MUD RINGS

- Available for 4" Square Boxes
- For use with power or low voltage
- 1 and 2 Gangs



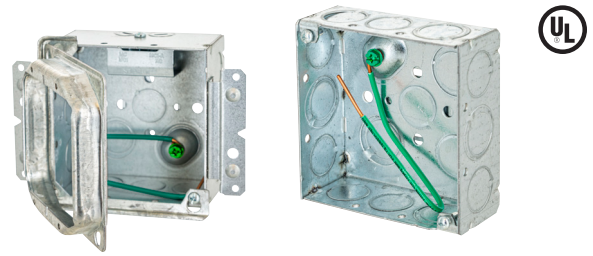
GRAND SLAM BOXES

- Easy homerun wiring
- Includes STAB-IT Connectors
- Includes grounding bars
- With or without concentric knock-outs

4" Square Boxes

Regular or STAB-IT® Boxes

Our most popular boxes are available with our unique connectors built into the box. Terminate MC cable in one third the time of traditional clamps. Mounting brackets and cable management options offer the first means of support.



- 2-cable STAB-IT connectors install 3 times faster than traditional connectors
- Designed for quick installation of flex, MC, MCI, MCI-A, MC-PCS, AC, and HCF Cable
- STAB-IT boxes with CM offer first means of support
- 232MSCM & 232MS includes far-side support on back
- 232MSHF and 232MSCMHF feature a heavy duty universal bracket support
- Includes ground wires, box mounting brackets and cable clamps
- Easier installation for labor savings

Boxes - 4" Square, 2-1/8" deep. Construction - Welded steel with raised grounds. **Capacity -** 30.3 in.³

Catalog No.	Description	Side Knockouts			Bottom Knockouts	
		Concentric	TKO	Cable Pry-outs	Concentric	TKO
232	Standard	(8) 1/2"	(4) 1/2" - 3/4"	—	(2) 1/2"	(2) 1/2" - 3/4"
232SLD	Standard, 8" #12 solid ground pigtail	(10) 1/2"	(4) 1/2" - 3/4"	—	(2) 1/2"	(2) 1/2" - 3/4"
232SM	Standard 10" #12 stranded ground pigtail	(8) 1/2"	(4) 1/2" - 3/4"	—	(2) 1/2"	(2) 1/2" - 3/4"
232S*	(1) STAB-IT Connector, w/Pigtail	(6) 1/2"	(3) 1/2" - 3/4"	2	(1) 1/2"	(1) 1/2" - 3/4"
232MS	(1) STAB-IT Connector, M brkts., w/Pigtail & UBS	(6) 1/2"	(3) 1/2" - 3/4"	2	(1) 1/2"	(1) 1/2" - 3/4"
232MSHF	(1) STAB-IT Connector, M brkts., w/Pigtail & Heavy Duty UBS	(6) 1/2"	(3) 1/2" - 3/4"	2	(1) 1/2"	(1) 1/2" - 3/4"
232MSCMHF	(1) STAB-IT Connector, M brkts., w/Pigtail, Cable Mgmt. Clip & Heavy Duty UBS	(6) 1/2"	(3) 1/2" - 3/4"	2	(1) 1/2"	(1) 1/2" - 3/4"
232SCM*	(1) STAB-IT Connector, w/Pigtail, Cable Mgmt. Clip & UBS	(6) 1/2"	(3) 1/2" - 3/4"	2	(1) 1/2"	(1) 1/2" - 3/4"
232MSCM	(1) STAB-IT Connector, M brkts., w/Pigtail, Cable Mgmt. Clip & UBS	(6) 1/2"	(3) 1/2" - 3/4"	2	(1) 1/2"	(1) 1/2" - 3/4"
244MS	(2) STAB-IT Connectors on top, M brkts., w/Pigtail	(6) 1/2"	(3) 1/2" - 3/4"	2	(1) 1/2"	(1) 1/2" - 3/4"
244MSCM	(2) STAB-IT Connectors on top, M brkts., w/Pigtail, Cable Mgmt. Clips & UBS	(6) 1/2"	(3) 1/2" - 3/4"	4	(1) 1/2"	(1) 1/2" - 3/4"
244MSCMHF	(2) STAB-IT Connectors on top, M brkts., w/Pigtail, Cable Mgmt. Clips & Heavy Duty UBS	(6) 1/2"	(3) 1/2" - 3/4"	4	(1) 1/2"	(1) 1/2" - 3/4"
244MSHF	(2) STAB-IT Connectors on top, M brkts., w/Pigtail & Heavy Duty UBS	(6) 1/2"	(3) 1/2" - 3/4"	4	(1) 1/2"	(1) 1/2" - 3/4"
244S	(2) STAB-IT Connectors on top, w/Pigtail	(6) 1/2"	(3) 1/2" - 3/4"	4	(1) 1/2"	(1) 1/2" - 3/4"
244SCM	(2) STAB-IT Connectors on top, w/Pigtail, Cable Mgmt. Clips	(6) 1/2"	(3) 1/2" - 3/4"	4	(1) 1/2"	(1) 1/2" - 3/4"
248HS	(2) STAB-IT Connectors, H brkt., w/Pigtail, UBS	(4) 1/2"	(1) 1/2" - 3/4"	4	(1) 1/2"	—
248MS	(2) STAB-IT Connectors, M brkts., w/Pigtail, UBS	(4) 1/2"	(1) 1/2" - 3/4"	4	(1) 1/2"	—
248MSHF	(2) STAB-IT Connectors, M brkts., w/Pigtail, Heavy Duty UBS	(4) 1/2"	(1) 1/2" - 3/4"	4	(1) 1/2"	—
248S	(2) STAB-IT Connectors, w/Pigtail	(4) 1/2"	(1) 1/2" - 3/4"	4	(1) 1/2"	—

1 STAB-IT connector can accommodate up to 2 cables. 2 STAB-IT connectors can accommodate up to 4 cables.

* cULus Listed. All other models are UL Listed

Boxes - 4" Square, 1-1/2" deep. Capacity - 21 in.³ Use with standard cable connectors

Catalog No.	Description	Side Knockouts		Back Knockouts	
		Concentric	TKO	Concentric	TKO
189F	Welded steel, raised ground, 8" solid #12 ground pigtail	(8) 1/2"	(4) 1/2" - 3/4"	(2) 1/2"	(2) 1/2" - 3/4"
189SM	Welded steel, raised ground, 10" solid #12 ground pigtail	(8) 1/2"	(4) 1/2" - 3/4"	(2) 1/2"	(2) 1/2" - 3/4"
196	Welded steel, long side mounting brackets	(8) 1/2"	(4) 1/2" - 3/4"	(3) 1/2"	(2) 1/2" - 3/4"

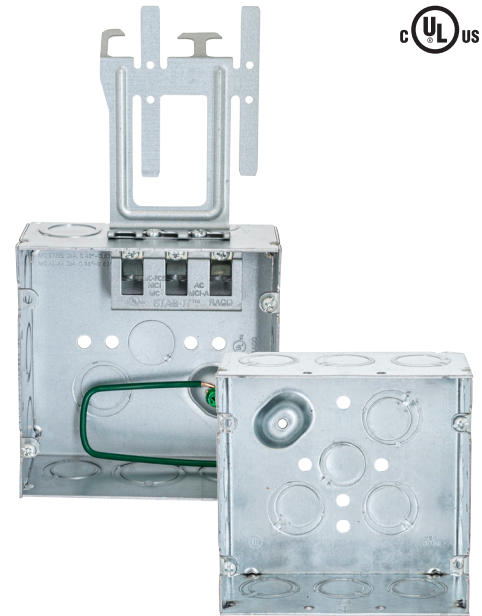
4-11/16" Square Boxes

Featuring STAB-IT® connectors



Large, welded boxes provide more room for wiring. Our exclusive integrated connectors are proven to terminate MC cable up to 3X faster than traditional clamps. It's easy: remove the prout, prep the cable, insert cable, done! Includes a knockout on the same side as the connectors. Mounting brackets and cable management options offer the first means of support.

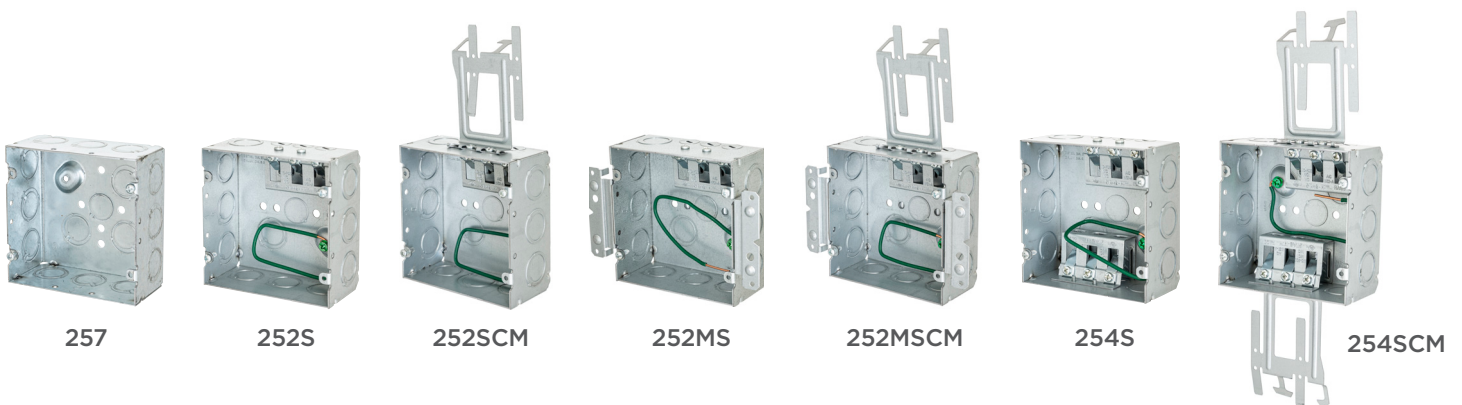
- 3-cable STAB-IT connectors install 3 times faster than traditional connectors
- Designed for quick installation of flex, MC, MCI, MCI-A, MC-PCS, AC, and HCF Cable
- All H & M SKU's have a far-side support and SKU's ending in HF have a heavy duty universal bracket support
- Includes ground wires, box mounting brackets and cable clamps
- Easier installation for labor savings



Boxes - 4-11/16" Square, 2-1/8" deep. **Construction -** Welded steel with raised grounds. **Capacity -** 42 in.³

Catalog No.	Description	Side Knockouts		Bottom Knockouts	
		TKO	Cable Pry-outs	Concentric	TKO
257	Standard	(12) 1/2" - 3/4"	—	(1) 1/2"	(3) 1/2" - 3/4"
252S*	(1) STAB-IT II Connector, w/Pigtail	(9) 1/2" - 3/4" (1) 3/4" - 1"	3	(1) 1/2"	(1) 1/2" - 3/4"
252SCM*	(1) STAB-IT II Connector, w/Pigtail, Cable Mgmt. Clip	(9) 1/2" - 3/4" (1) 3/4" - 1"	3	(1) 1/2"	(1) 1/2" - 3/4"
252MS*	(1) STAB-IT II Connector, M brkts., w/Pigtail & UBS	(9) 1/2" - 3/4" (1) 3/4" - 1"	3	(1) 1/2"	(1) 1/2" - 3/4"
252MSCM*	(1) STAB-IT II Connector, M brkts., w/Pigtail & Cable Mgmt. Clip & UBS	(9) 1/2" - 3/4" (1) 3/4" - 1"	3	(1) 1/2"	(1) 1/2" - 3/4"
252MSCMHF	(1) STAB-IT II Connector, M bracket, w/Pigtail, Cable Mgmt. Clip & Heavy Duty UBS	(9) 1/2" - 3/4" (1) 3/4" - 1"	3	(1) 1/2"	(1) 1/2" - 3/4"
252MSHF	(1) STAB-IT II Connector, M brkts., w/Pigtail, & Heavy Duty UBS	(9) 1/2" - 3/4" (1) 3/4" - 1"	3	(1) 1/2"	(1) 1/2" - 3/4"
254S*	(2) STAB-IT II Connectors, w/Pigtail	(8) 1/2" - 3/4"	6	(1) 1/2"	(1) 1/2" - 3/4"
254SCM*	(2) STAB-IT II Connectors, w/Pigtail & Cable Mgmt. Clips	(8) 1/2" - 3/4"	6	(1) 1/2"	(1) 1/2" - 3/4"
987	Heavy Duty Universal Box Support (UBS)	—	—	—	—

* cULus Listed. All other models are UL Listed



Grand Slam® Junction Boxes



Large capacity home run boxes

Terminate home runs in commercial applications with the Grand Slam box. It offers extra room and flexibility, including built-in STAB-IT® connectors for jobsite labor savings. Also includes ground bar.

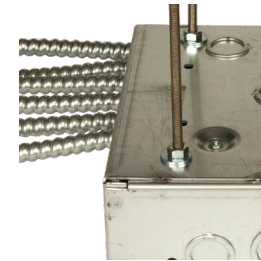
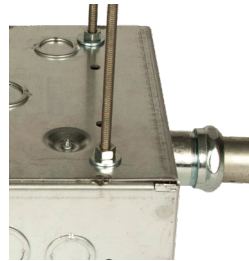
- With STAB-IT clamps, has been tested at over 3X faster than traditional connectors
- Surface mount cover and ground bar included
- Two grounds for installation flexibility
- Available with concentric knockouts on side and back
- UL Listed



GRAND SLAM® Junction Boxes

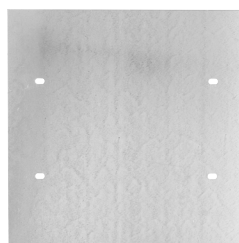
Box, surface covers and ground bar included.

Catalog No.	STAB-IT® Clamps	Concentric Knockouts	Capacity (In. ³)	Dimensions
SC080803STRC	(4) 14/2 to 10/3, up to 8 cables	(12) 1/2" & 3/4", (5) 3/4" & 1"	179	8" x 8" x 3"
SC080803NKSTRC	(4) 14/2 to 10/3, up to 8 cables	—	179	8" x 8" x 3"
SC121204STRC	(6) 14/2 to 10/3, up to 12 cables	(12) 1/2" & 3/4", (9) 3/4" & 1", (8) 1" & 1-1/4"	546	12" x 12" x 4"
SC121204NKSTRC	(6) 14/2 to 10/3, up to 12 cables	—	546	12" x 12" x 4"



GRAND SLAM® Junction Box Accessories

Catalog No.	Description	For Use With	Dimensions
SCF1212RC	Flush style cover	12" x 12" boxes	14" x 14"
989ST	STAB-IT Connector (accepts 2 cables)	All GRAND SLAM boxes	1.032" x 1.75" x 0.983"

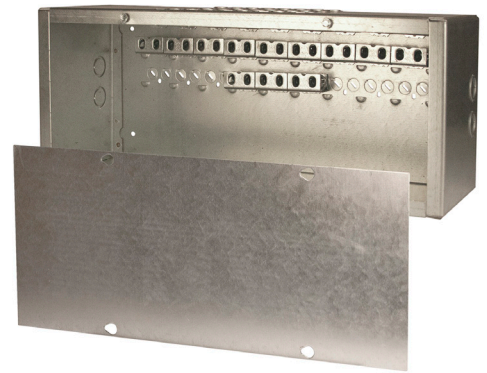


Transition Box



Transition from MC to conduit easily before entering a load center. The Dugout box delivers more labor savings and installation flexibility than any transition box on the market. Built-in STAB-IT clamps quickly terminate MC and concentric knockouts provide for 3/4" or 1" conduit to the panel.

- Designed for quick installation of flex, MC, MCI, MCI-A, AC and HCF cable
- STAB-IT clamp has been tested at over 3X's faster than traditional MC connectors
- Room to add up to six additional STAB-IT connectors
- Accepts cable sizes from 14/2 up to 10/3 for most cable types



Dugout Transition Box

Catalog No.	Description	Dimensions	Knockouts	Built-in STAB-IT Clamps
SC082006STRC	8" x 20" Transition Box (cover included)	8" x 20" x 6"	(4) 3/4" & 1" Concentric	21 (14/2 to 10/3) Up to 42 cables

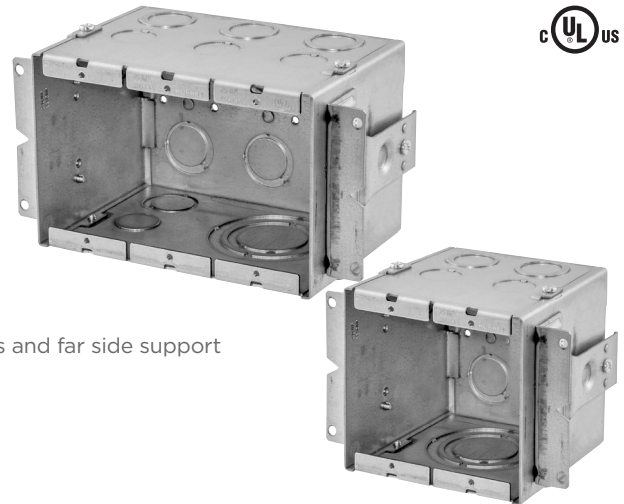
AV Wall Boxes



Gangable boxes

Oversized in-wall boxes deliver data, AV, and power side-by-side. Mount independently or ganged together for multiple devices. Perfect for Cat6 and fiber optic cables with a larger bend radius.

- 4" depth accepts any device
- Suitable for masonry application
- Knockouts from 1/2" up to 2"
- Adjustable stud mounting brackets and far side support
- Accepts low voltage partition
- NEMA spaced device mounting, accepts industry standard wallplates



Gangable AV Wall Boxes

Catalog No.	Description	Knockouts		
		Top	Bottom	Back
985	2-Gang, 2 in. KO, 54 in ³ capacity, 4.21" x 4.06" x 4"	(2) 1/2" (2) 1/2" - 3/4" TKO	(1) 1", 1-1/4", 1-1/2", 2"	(2) 1/2" - 3/4"
986	3-Gang, 2 in. KO, 79 in ³ capacity, 4.21" x 5.87" x 4"	(3) 1/2" (3) 1/2" - 3/4" TKO	(1) 1/2" (1) 1/2" - 3/4" TKO (1) 1", 1-1/4", 1-1/2", 2"	(3) 1/2" - 3/4"
987	4-Gang, 2 in. KO, 104 in ³ capacity, 4.21" x 7.69" x 4"	(4) 1/2" (4) 1/2" - 3/4" TKO	(1) 1/2" (1) 1/2" - 3/4" TKO (2) 1", 1-1/4", 1-1/2", 2"	(4) 1/2" - 3/4"
988	6-Gang, 2 in. KO, 154 in ³ capacity, 4.21" x 11.31" x 4"	(6) 1/2" (6) 1/2" - 3/4" TKO	(1) 1/2" (1) 1/2" - 3/4" TKO (2) 1", 1-1/4", 1-1/2", 2"	(6) 1/2" - 3/4"

Low Voltage AV Wallbox Partition

Catalog No.	For Use With	Type
989	985, 986	Low voltage partition



Large Capacity Wall Boxes

One, two or three gang boxes

Oversized two or three gang boxes and mud rings are perfect for AV, data, and power applications. Extra-large knockouts for pulling pre-terminated cables.



- Designed to deliver power and low voltage in the same box
- Two inch knockout feed-thru
- Use standard mud rings and wallplates
- 3 1/4 Inch depth accommodates large cables and bend radii

2-Gang Large Capacity Wall Boxes

Boxes are 4-11/16" square, 3-1/4" deep. The boxes have 66.7 in³. capacity. Use with industry standard 4-11/16" square mud rings for 1- or 2-gang applications.

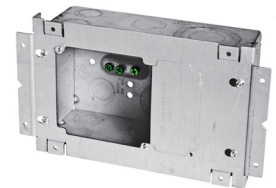
Catalog No.	Description	Side Knockouts		Back Knockouts
		Concentric	TKO	TKO
260	Standard	(2) 1/2"	(2) 3/4" - 1" (2) 1" - 1-1/4"	(2) 3/4" - 1" (2) 1" - 1-1/4"
260H	With mounting brackets	(2) 1/2"	(2) 3/4" - 1" (2) 1" - 1-1/4"	(2) 3/4" - 1" (2) 1" - 1-1/4"



3-Gang Large Capacity Wall Boxes

Boxes are 4-11/16" H, 7-3/4" W, 3-1/4" D. The boxes have 66.7 in³. capacity. Use with industry standard 4" square mud rings for 1- or 2-gang applications.

Catalog No.	Description	Side Knockouts		Back Knockouts
		Concentric	TKO	TKO
263	Square 2- or 3-gang wall box	(2) 1/2"	(2) 1/2" - 3/4" (4) 3/4" - 1" (2) 1" - 1-1/4"	(2) 1/2" - 3/4" (2) 3/4" - 1" (2) 1" - 1-1/4"



Mud Rings

Catalog No.	Type	For Use With	Height	Capacity (In. ³)
818	2-gang mud rings	260	5/8"	7.3
779			3/4"	8.8
819			1"	12.0
820			1-1/4"	15.0
792	3-gang mud rings	263	1/2"	10.1
793			5/8"	12.3
794			1-1/4"	24.3



Low Voltage Partition

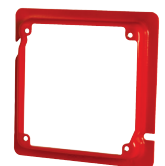
Catalog No.	Type	For Use With	Mud Ring Depth
981	Solid Divider	260, 263	5/8", 3/4", 1-1/4"



4-11/16" Square 2 Device and Tile Cover

For Life Safety Appliances, Emergency Exit Signs, and Speaker Strobe Applications

Catalog No.	Description	Cubic In. Cap (cm ³)
911-16	Raised 5/8", painted red	8.3 (136.0)



BLOCK-LOC® Masonry Boxes

Self-positioning masonry boxes quickly and accurately lock into position and hold during the construction process, even in irregular cut openings. Includes break-off front tabs. Use for power and data outlets.

- 1-4 gang welded and gangable 3-1/2" deep boxes
- Tile covers for 4" sq and 4-11/16" sq are 2" deep
- Galvanized steel construction



BLOCK-LOC® Masonry Boxes

Catalog No.	Description	Cu. In. Capacity	Ctn. Qty.	Knockouts		
				Top	Bottom	Back
689B	3-1/2" Deep Single-Gang, Gangable	22.5	22.5	4 TKO	4 TKO	4 TKO
695B	3-1/2" Deep Single-Gang, Welded	22.5	22.5	4 Conc.	4 Conc.	4 Conc.
696B	3-1/2" Deep Two-Gang, Welded	45.0	45.0	4 Conc.	4 Conc.	4 Conc.
697B	3-1/2" Deep Three-Gang, Welded	67.3	67.3	4 Conc.	4 Conc.	4 Conc.
698B	3-1/2" Deep Four-Gang, Welded	89.8	89.8	4 Conc.	4 Conc.	4 Conc.
786B	4" Sq. Single-Gang Tile Cover, 2" Deep	14.5	14.5	—	—	—
796B	4" Sq. Two-Gang Tile Cover, 2" Deep	20.5	20.5	—	—	—
899B	4-11/16" Sq. Single-Gang Tile Cover, 2" Deep (Not UL Listed)	16.0	16.0	—	—	—



689B



695B



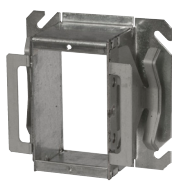
696B



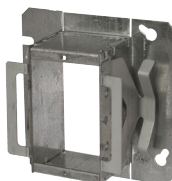
697B



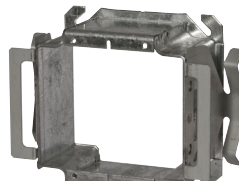
698B



786B



899B



796B

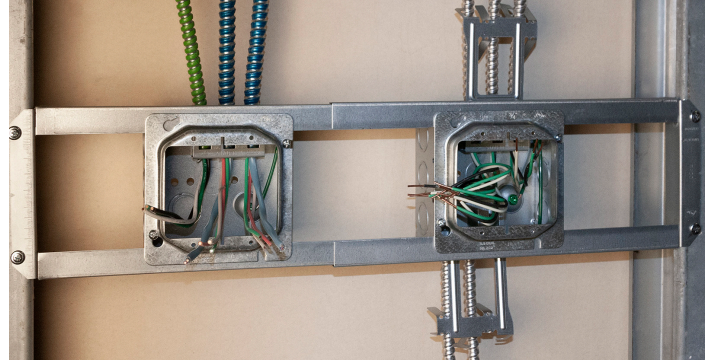
4" STAB-IT® Box Assemblies for Pre-Fab



Save time and effort!

Save time and labor on any job with RACO ProReady™ prefab assemblies. Components are pre-assembled, ready to install right out of the box. Ensure quality while reducing material and labor cost, even jobsite waste.

Assemblies include 4" boxes with integrated STAB-IT connectors for fast and easy securing of MC cable. Mounting brackets, cable management clips, mudrings, solid #12 pigtails also included. Models with a second box for power and data applications include a std 4" box with additional knockouts.



FEATURES

- All components preassembled, ready to install
- Open Center Brackets pre-set for either 16" or 24" studs
- STAB-IT 4" Boxes
 - STAB-IT connector holds 2 cables
 - Built-in cable management clips provides first means of support
 - Model ending in HF feature a Heavy Duty Universal Box Support
- Adjustable Mud Rings & Hinged Adjustable Mud Rings
 - ½" to 1-3/8" adjustability range
 - All screws inside the ring to eliminate damage from router
 - Adjustment screws visible and accessible after the device is installed
 - Hinged design allows easy and quick access to install wiring
- For use on wood or metal studs
- Designed and assembled in USA
- UL Listed

COMPONENTS

- 232MSCMHF: 4" Sq., 2-1/8" deep, (1) STAB-IT connector, M Bracket, Pigtail Heavy Duty Universal Box Support, and Cable Management Clip
- 232SCM: 4" Sq., 2-1/8" deep, (1) STAB-IT connector, Pigtail and Cable Management Clip
- 231: 4" Sq., 2-1/8" deep, Raised Ground
- 9020R: Adjustable Open Center Bracket - 16" to 24"
- 773: 1G Fixed Mud Ring ¾"
- 779: 2G Fixed Mud Ring ¾"
- 768AMR: 1G Adjustable Mud Ring
- 769AMR: 2G Adjustable Mud Ring
- 768HAMR 1G Hinged Adjustable Mud Ring
- 769HAMR 2G Hinged Adjustable Mud Ring



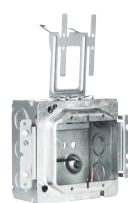
FW1.1



FW1.7



FW1.9



FW4.1



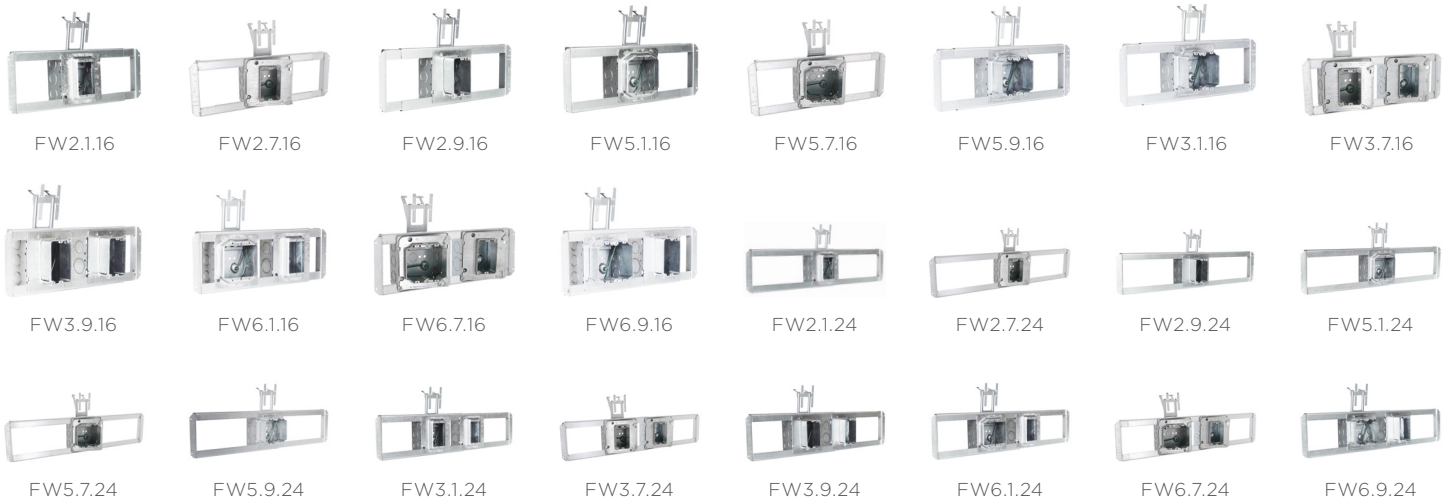
FW4.7



FW4.9

4" Square Box/Pre-Fab Assemblies

Catalog No.	Description	Cu. In. Capacity	Ctn. Qty.
FW1.1	232MSCMHF + 773 / 1G - Mud Ring, Raised 3/4" / M Bracket	30.3	12
FW1.7	232MSCMHF + 768HAMR/1G Hinged Adjustable Mud Ring/M Bracket	30.3	12
FW1.9	232MSCMHF + 768AMR / 1G -Adjustable Mud Ring / M Bracket	30.3	12
FW4.1	232MSCMHF + 779 / 2G - Mud Ring, Raised 3/4" / M Bracket	30.3	12
FW4.7	232MSCMHF + 768HAMR/2G Hinged Adjustable Mud Ring/M Bracket	30.3	12
FW4.9	232MSCMHF + 769AMR / 2G - Adjustable Mud Ring / M Bracket	30.3	12



4" Square Box/Pre-Fab Assemblies

Catalog No.	Description	Cu. In. Capacity	Ctn. Qty.
FW2.1.16	9020R + 232SCM + 773 / 1G - Mud Ring, Raised 3/4" / 16" Studs	30.3	6
FW2.7.16	9020R + 232SCM + 768HAMR/1G Hinged Adjustable Mud Ring/16" Studs	30.3	6
FW2.9.16	9020R + 232SCM + 768AMR / 1G - Adjustable Mud Ring / 16" Studs	30.3	6
FW3.7.16	9020R + 232SCM + 231 + (2) 768HAMR/1G Hinged Adjustable Mud Ring/16" Studs	30.3 + 30.3	6
FW5.1.16	9020R + 232SCM + 779 / 2G - Mud Ring, Raised 3/4" / 16" Studs	30.3	6
FW5.7.16	9020R + 232SCM + 768HAMR/2G Hinged Adjustable Mud Ring/16" Studs	30.3	6
FW5.9.16	9020R + 232SCM + 769AMR / 2G - Adjustable Mud Ring / 16" Studs	30.3	6
FW3.1.16	9020R + 232SCM + 231 + (2) 773 / 1G - Mud Ring, Raised 3/4" / 16" Studs	30.3	6
FW3.9.16	9020R + 232SCM + 231 + (2) 768AMR / 1G - Adjustable Mud Ring / 16" Studs	30.3 + 30.3	6
FW6.1.16	9020R + (232SCM + 779) / 2G - Mud Ring, Raised 3/4" + (231 + 773) / 1G - Mud Ring, Raised 3/4" / 16" Studs	30.3 + 30.3	6
FW6.7.16	9020R + (232SCM + 768HAMR) 2G Hinged Adjustable Mud Ring + (231 + 769HAMR), 1G Hinged Adjustable Mud Ring/16" Studs	30.3 + 30.3	6
FW6.9.16	9020R + (232SCM + 869AMR) / 2G - Adj. Mud Ring + (231 + 768AMR) / 1G - Adj. Mud Ring / 16" Studs	30.3 + 30.3	6
FW2.1.24	9020R + 232SCM + 773 / 1G - Mud Ring, Raised 3/4" / 24" Studs	30.3	6
FW2.7.24	9020R + 232SCM + 768HAMR 1G Hinged Adjustable Mud Ring/24" Studs	30.3	6
FW2.9.24	9020R + 232SCM + 768AMR / 1G - Adjustable Mud Ring / 24" Studs	30.3	6
AW3.7.24	9020R + 232SCM + 231 + (2) 768HAMR/1G Hinged Adjustable Mud Ring/24" Studs	30.3 + 30.3	6
FW5.1.24	9020R + 232SCM + 779 / 2G - Mud Ring, Raised 3/4" / 24" Studs	30.3	6
FW5.7.24	9020R + 232SCM + 769HAMR/2G Hinged Adjustable Mud Ring/24" Studs	30.3	6
FW5.9.24	9020R + 232SCM + 769AMR / 2G - Adjustable Mud Ring / 24" Studs	30.3	6
FW3.1.24	9020R + 232SCM + 231 + (2) 773 / 1G - Mud Ring, Raised 3/4" / 24" Studs	30.3 + 30.3	6
FW3.9.24	9020R + 232SCM + 231 + (2) 768AMR / 1G - Adj. Mud Ring / 24" Studs	30.3 + 30.3	6
FW6.1.24	9020R + (232SCM + 779) / 2G - Mud Ring, Raised 3/4" + (231 + 773) / 1G - Mud Ring, Raised 3/4" / 24" Studs	30.3	6
FW6.7.24	9020R + (232SCM + 768HAMR) 2G Hinged Adjustable Mud Ring + (231 + 769HAMR), 1G Hinged Adjustable Mud Ring/24" Studs	30.3 + 30.3	6
FW6.9.24	9020R + (232SCM + 769AMR) / 2G - Adj. Mud Ring + (231 + 768AMR) / 1G - Adj. Mud Ring / 24" Studs	30.3	6

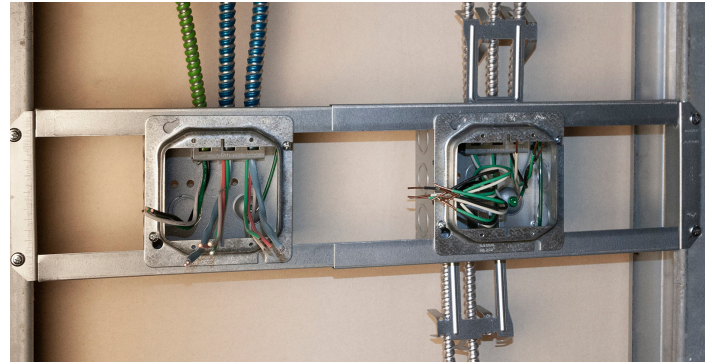
4-11/16" STAB-IT® II Box Assemblies for Pre-Fab



Save time and effort!

Save time and labor on any job with RACO ProReady™ prefab assemblies. Components are pre-assembled, ready to install right out of the box. Ensure quality while reducing material and labor cost, even jobsite waste.

Assemblies include 4-11/16" boxes with integrated STAB-IT II connectors for fast and easy securing of MC cable. Mounting brackets, cable management clips, mudrings, solid #12 pigtails also included. Models with a second box for power and data applications include a standard 4-11/16" box with additional knockouts.



FEATURES

- All components preassembled, ready to install
- Open Center Brackets pre-set for either 16" or 24" studs
- STAB-IT II 4-11/16" Boxes
 - STAB-IT connector holds 3 cables
 - Built-in cable management clips provides first means of support
 - Model ending in HF feature a Heavy Duty Universal Box Support
- Adjustable Mud Rings & Hinged Adjustable Mud Rings
 - 1/2" to 1-3/8" adjustability range
 - All screws inside the ring to eliminate damage from router
 - Adjustment screws visible and accessible after the device is installed
 - Hinged design allows easy and quick access to install wiring
- For use on wood or metal studs
- Designed and assembled in USA
- UL Listed

COMPONENTS

- 252MSCMHF: 4-11/16" Sq., 2-1/8" deep, (1) STAB-IT II connector, M Bracket, Pigtail Heavy Duty Universal Box Support, and Cable Management Clip
- 252SCM: 4-11/16" Sq., 2-1/8" deep, (1) STAB-IT II connector, Pigtail and Cable Management Clip
- 265: 4-11/16" Sq., 2-1/8" deep, Raised Ground
- 9020R: Adjustable Open Center Bracket - 16" to 24"
- 838: 1G Fixed Mud Ring 3/4"
- 840: 2G Fixed Mud Ring 3/4"
- 868AMR: 1G Adjustable Mud Ring
- 869AMR: 2G Adjustable Mud Ring
- 843HAMR 1G Hinged Adjustable Mud Ring
- 818HAMR 2G Hinged Adjustable Mud Ring



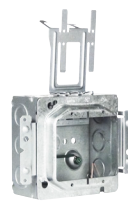
AW1.1



AW1.7



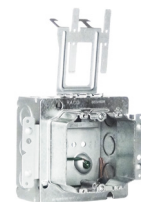
AW1.9



AW4.1



AW4.7



AW4.9

4-11/16" Square Box/Pre-Fab Assemblies

Catalog No.	Description	Cu. In. Capacity	Ctn. Qty.
AW1.1	252MSCMHF + 838 / 1G - Mud Ring, Raised 3/4" / M Bracket	42.0	12
AW1.7	252MSCMHF + 843HAMR/1G Hinged Adjustable Mud Ring/M Bracket	42.0	12
AW1.9	252MSCMHF + 868AMR / 1G -Adjustable Mud Ring / M Bracket	42.0	10
AW4.1	252MSCMHF + 840 / 2G - Mud Ring, Raised 3/4" / M Bracket	42.0	12
AW4.7	252MSCMHF + 818HAMR/2G Hinged Adjustable Mud Ring/M Bracket	42.0	12
AW4.9	252MSCMHF + 869AMR / 2G - Adjustable Mud Ring / M Bracket	42.0	10



4-11/16" Square Box/Pre-Fab Assemblies

Catalog No.	Description	Cu. In. Capacity	Ctn. Qty.
AW2.1.16	9020R + 252SCM + 838 / 1G - Mud Ring, Raised 3/4" / 16" Studs	42.0	6
AW2.7.16	9020R + 252SCM + 843HAMR/1G Hinged Adjustable Mud Ring/16" Studs	42.0	6
AW2.9.16	9020R + 252SCM + 868AMR / 1G - Adjustable Mud Ring / 16" Studs	42.0	6
AW5.1.16	9020R + 252SCM + 840 / 2G - Mud Ring, Raised 3/4" / 16" Studs	42.0	6
AW5.7.16	9020R + 252SCM + 818HAMR/2G Hinged Adjustable Mud Ring/16" Studs	42.0	6
AW5.9.16	9020R + 252SCM + 869AMR / 2G - Adjustable Mud Ring / 16" Studs	42.0	6
AW3.1.16	9020R + 252SCM + 265 + (2) 838 / 1G - Mud Ring, Raised 3/4" / 16" Studs	42.0	6
AW3.7.16	9020R + 252SCM + 265 + (2) 843HAMR/1G Hinged Adjustable Mud Ring/16" Studs	42.0 + 42.0	6
AW3.9.16	9020R + 252SCM + 265 + (2) 868AMR / 1G - Adjustable Mud Ring / 16" Studs	42.0	6
AW6.1.16	9020R + (252SCM + 840) / 2G - Mud Ring, Raised 3/4" + (265 + 838) / 1G - Mud Ring, Raised 3/4" / 16" Studs	42.0 + 42.0	6
AW6.7.16	9020R + (252SCM + 818HAMR) 2G Hinged Adjustable Mud Ring + (265 + 843HAMR), 1G Hinged Adjustable Mud Ring/16" Studs	42.0 + 42.0	6
AW6.9.16	9020R + (252SCM + 869AMR) / 2G - Adj. Mud Ring + (265 + 868AMR) / 1G - Adj. Mud Ring / 16" Studs	42.0	6
AW2.1.24	9020R + 252SCM + 838 / 1G - Mud Ring, Raised 3/4" / 24" Studs	42.0	6
AW2.7.24	9020R + 252SCM + 843HAMR 1G Hinged Adjustable Mud Ring/24" Studs	42.0	6
AW2.9.24	9020R + 252SCM + 868AMR / 1G - Adjustable Mud Ring / 24" Studs	42.0	6
AW3.7.24	9020R + 252SCM + 265 + (2) 843HAMR/1G Hinged Adjustable Mud Ring/24" Studs	42.0 + 42.0	6
AW5.1.24	9020R + 252SCM + 840 / 2G - Mud Ring, Raised 3/4" / 24" Studs	42.0	6
AW5.7.24	9020R + 252SCM+ 818HAMR/2G Hinged Adjustable Mud Ring/24" Studs	42.0	6
AW5.9.24	9020R + 252SCM + 869AMR /2G - Adjustable Mud Ring / 24" Studs	42.0	6
AW3.1.24	9020R + 252SCM + 265 + (2) 838 / 1G - Mud Ring, Raised 3/4" / 24" Studs	42.0 + 42.0	6
AW3.9.24	9020R + 252SCM + 265 + (2) 868AMR / 1G - Adj. Mud Ring / 24" Studs	42.0 + 42.0	6
AW6.1.24	9020R + (252SCM + 840) / 2G - Mud Ring, Raised 3/4" + (265 + 838) / 1G - Mud Ring, Raised 3/4" / 24" Studs	42.0 + 42.0	6
AW6.7.24	9020R + (252SCM + 818HAMR) 2G Hinged Adjustable Mud Ring + (265 + 843HAMR), 1G Hinged Adjustable Mud Ring/24" Studs	42.0 + 42.0	6
AW6.9.24	9020R + (252SCM + 869AMR) / 2G - Adj. Mud Ring + (265 + 868AMR) / 1G - Adj. Mud Ring / 24" Studs	42.0 + 42.0	6

Braces and Brackets



9004R - 9006R, 9013R - 9015R

Braces and extenders for positioning boxes between metal or wood studs

- Available for 1-1/2" or 2-1/8" deep boxes
- Location dimples on face of bar allows for exact positioning
- Dimple feature provides quick start of screws, and reinforcement to prevent box mounting screws from stripping out when box is mounted
- Design allows ground screw to clear when box is mounted
- Boxes attach easily with self-tapping screws

9001, 9002

Position electrical boxes, plaster rings, and low voltage devices between studs

- Fold-back stabilizer leg prevents bracket from being pushed back in wall cavity during drywall installation
- Designed for 2-1/2" or 3-1/2 studs
- Mounts 4" or 4-11/16" sq. boxes
- Provides maximum work area inside box
- Mounts to within 1/16" of drywall every time

9016R, 9024R, 9020R

Extra features make positioning and adjusting boxes and plaster rings between studs easy

- Accepts both 4" and 4-11/16" square boxes and plaster rings
- Opening gives installer flexibility of box position between studs
- Features built-in first means of support for securing and supporting flex and armored cable
- Available for both 16" and 24" stud spacing
- Built-in ruler to aid in alignment of electrical box
- 9020R is adjustable, rigid enough to eliminate far-side support

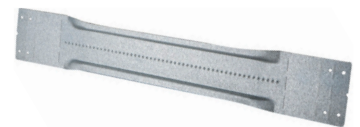
Non-adjustable Box Mounting Brace

Catalog No.	For Use With	Type	Box Mounting
9004R	4" and 4-11/16" boxes, cULus	For 1-1/2" or 2-1/8" deep box	16"
9006R			24"



Adjustable Box Mounting Brace

Catalog No.	For Use With	Type	Box Mounting
9013R	4" and 4-11/16" boxes, cULus	For 1-1/2" or 2-1/8" deep box	10-3/8" to 18"
9015R			15" to 16"



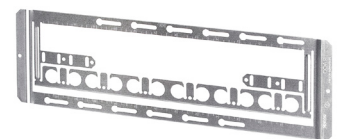
Fixed Position Box Mounting Brackets

Catalog No.	For Use With	Type	Box Mounting
9001	4" and 4-11/16" boxes, cULus	For 3 boxes	16" O.C.
9002		For 4 boxes	24" O.C.



Open Center Box Support Brackets

Catalog No.	For Use With	Type	Box Mounting
9016R	4" and 4-11/16" boxes, cULus	Open wall adjustable box bracket	16"
9024R			24"
9020R			16" to 24"



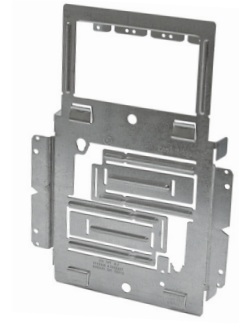
Box and Cable Supports

Single Box Mounting Bracket with Cable Support

Bracket support for an electrical box mounted to a stud.

Catalog No.	For Use With	Mounting
SBRNRRAC	4" or 4-11/16" sq. box	Bracket Support

- Accepts up to 3 MC cables (12-2MC to 10-4MC)
- Mounts 4" sq. box left or right of stud
- Supports wood and metal stud depths: 2-1/2", 3-1/2", 3-5/8", 5-1/2" or 6" studs



Between Stud Spanner Bar

Spans 24" between two studs.

Catalog No.	For Use With	Mounting
SP2RAC	SBRNRRAC or S1CRAC	Metal or wood stud

- Dual-point mounting, right or left of stud
- Mounts 4" or 4-11/16" sq. box to 2-1/2", 3-1/2" or 6" studs

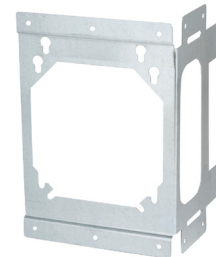


Two-point Box Mounting Bracket

Supports electrical box when mounted to a stud

Catalog No.	For Use With	Mounting
9018	4" or 4-11/16" sq. box	Stud

- Dual-point mounting, right or left of stud
- Mounts 4" or 4-11/16" sq. box to 2-1/2", 3-1/2" or 6" studs



BOX-LOC® Metal Stud Clip

Supports electrical box when mounted to a stud.

Catalog No.	For Use With	Mounting
980	4" or 4-11/16" sq. box	Spring steel bracket

- Allows any 4" or 4-11/16" square metal box to be affixed to a metal stud quickly and easily



Far Side Support

Adds far side support to electrical box when mounted to a stud.

Catalog No.	For Use With	Mounting
978	4" or 4-11/16" sq. box	Box support

- Allows any 4" or 4-11/16" square metal box to be affixed to a metal stud quickly and easily



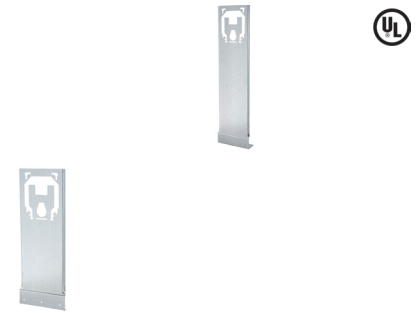
Box and Cable Supports *Cont.*

Floor Mounted Box Support

Bracket support for an electrical box from floor or concrete forms.

Catalog No.	For Use With	Height	Mounting
9009	4" or 4-11/16" sq. box	12"	Bracket Support
9010		18"	

- Fold-back stabilizer leg prevents bracket from being pushed back in wall cavity during drywall installation
- Designed for mounting square boxes 12" or 18" above floor
- Mounts to metal or wood plate
- Box can be mounted on support without drywall ring to save time by providing maximum working area in box
- When mounted, raised cover is brought to within 1/16" of drywall every time

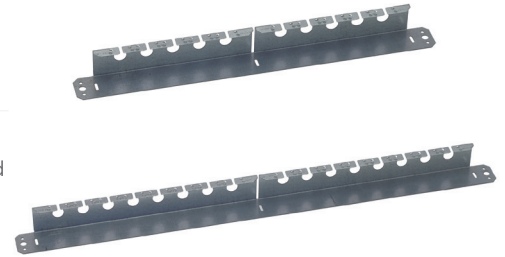


MC/BX Cable Holder

Designed to organize runs of MC or BX cables with spacing for NEC requirements that eliminate the need for derating.

Catalog No.	For Use With	Height	Mounting
CS1RAC	MC or BX cable runs	16", 10 cable positions	Multiple mounting positions
CS2RAC		24", 24 cable positions	

- Mounts wall/surface, hung by 1/4" threaded rod, top of wall mounted or deck mounted
- Easy to use integrated locking tabs hold cable securely in place - snap cable in, no additional hardware required to hold cables in place
- Heavy 20 gauge .038" gauge pre-galvanized steel construction for secure and rigid support of boxes in wall cavity



4" and 4-11/16" Box Accessories

Mud rings and supports

ProReady™ flexibility for a fast, flush fit! Steel adjustable mud rings match the drywall depth after installation. Hinged mud rings allow devices to be mounted during prefab, then swing out of the way for wiring on site. Protector plates protect devices during drywall install, remove them during trim out.

- 1 & 2-Gang adjustable mud rings
- 1 & 2-Gang hinged adjustable mud rings
- Standard 1 & 2-gang mud rings
- Adjustable open box mounting brackets



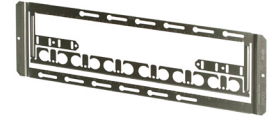
Mud Rings

Catalog No.	For Use With	Type	Raised Height	Capacity (In. ³)	Listing	
868AMR	4-11/16" boxes	1-gang, adjustable	1/2" to 1-3/8"	4 to 9-1/2	UL Listed	
869AMR		2-gang, adjustable		8 to 15-1/2		
843HAMR		1-gang, hinged adjustable		4 to 9-1/2		
818HAMR		2-gang, hinged adjustable		8 to 15-1/2		
843		4-11/16" boxes	1-gang	5/8"	4-1/2	cULus
842				1-1/4"	9-1/2	
841			2-gang	1/2"	5.5	
818				5/8"	7.3	
779				3/4"	8.8	
819				1"	12.0	
820	1-1/4"	15.0				
768AMR	4" boxes	1-gang, adjustable	1/2" to 1-3/8"	4 to 9-1/2	UL Listed	
769AMR		2-gang, adjustable		8 to 15-1/2		
768HAMR		1-gang, hinged adjustable		4 to 9-1/2		cULus
769HAMR		2-gang, hinged adjustable		8 to 15-1/2		
756AMR		Adj. round for 4" sq. box	4.4 to 10.5	UL Listed		
768		1-gang	4.5			
768B		1-gang, stud mount	5/8"		4.5	
768H		1-gang, hinged	5.5			
775		1-gang	1-1/4"	9.5	cULus	
769		2-gang	7.3			
769B		2-gang, stud mount	5/8"	7.3	UL Listed	
769H		2-gang, hinged	8.3			
781		2-gang	1-1/4"	15	cULus	
822AMR		942 box	3-gang, adjustable	1/2" to 1-3/8"		11.0 to 20.0

4" and 4-11/16" Box Accessories *Cont.*

Open Center Box Support Brackets

Catalog No.	For Use With	Type	Box Mounting
9016R	4" and 4-11/16" boxes, cULus	Open wall adjustable box bracket	16"
9024R			24"
9020R			16" to 24"



Plates

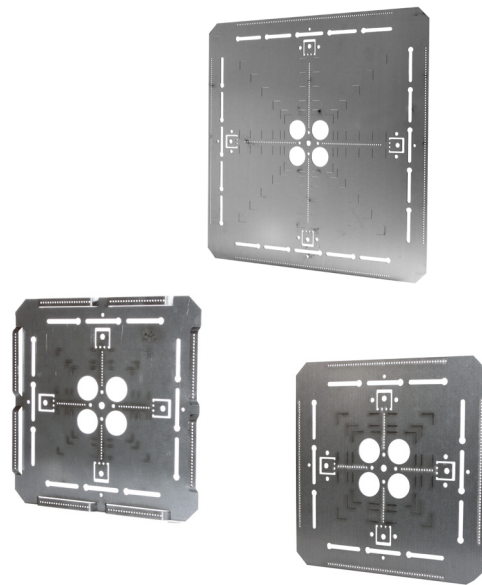
Catalog No. 1-Gang	Catalog No. 2-Gang	Description	For Use With	Height
701F	702F	Reuseable metallic mud ring cable protector plate	4" and 4-11/16" boxes	Flush 3/4"
701R	702R			
999	-	Metallic flush-fit devices levelling plate		-



Box Supports – Ceiling

Quickly hang electrical boxes in overhead commercial or industrial applications. Provides box support and positioning for conduit exiting the box. Create a clean, organized, and strong installation that saves time and materials compared to traditional suspended procedures.

- Mount horizontally or vertically from a single 3/8" threaded rod
- Bendable tabs secure plate in vertical installation
- Multiple markings for easier box alignment
- Pre-punched holes for rear raceway access
- Holes and slots provide limitless options for clamp or strap installation
- Lanced feature on 9112RL for easier one-hole strap installation
- Constructed of 16 gauge galvanized steel



Square Box and Conduit Hangers

Catalog No.	For Use With	Size	Mounting
9112R	Accommodates multiple 4" sq. or larger boxes, up to 12" sq.	12" x 12"	Ceiling
9112RL		18" x 18"	
9118R*			

*Includes Grand Slam junction box

Crushed Corner Covers

Square Metallic Exposed Work Covers



Use RACO's surface covers to support switches or receptacles with boxes in surface mount or exposed work applications.

FEATURES

- Exposed work covers include screws and nuts where required
- Exposed work covers meet the requirements of the 2020 NEC Article 250.146 (A)
- No bonding jumper is required for covers with: (1) Crushed corners (2) Two or more device attachment fasteners that are permanent with thread-locking, screws, or nut-locking means (3) Insulating retaining washer removed for at least one device attachment screw

SPECIFICATIONS

- For use with 4" boxes
- 6.5 in³ capacity (106.5 cm³)
- UL Listed

4" Square Crushed Corner Covers - Raised 1/2"

Catalog No.	Description
800C	1 Toggle Switch
801C	1 Receptacle 1.406" Dia.
803C	2 Toggle Switches
804C	Blank, No Holes
805C	1 Toggle Switch and 1 Receptacle 1.406" Dia.
806C	1 Duplex and 1 Receptacle 1.406" Dia.
807C	2 Receptacles 1.406" Dia.
808C	1 GFCI
808U	1 GFCI, 3-in-1 Plates
809C	2 GFCI
809U	2 GFCI, 6-in-1 Plates
810C	30A-50A Receptacle 2.141" Dia.
811C	30A Locking 1.719" Dia.
811U	1 Round Device: 1.406", 1.620" or 1.719" Dia.
812C	20A Receptacle 1.620" Dia.
813C	30-60A Receptacle 2.625" Dia.
814C	1 GFCI and 1 Toggle Switch
831C	1 Duplex, 1 20A, 1.620" Dia.
902C	1 Duplex Receptacle
906C	1 Duplex Receptacle and 1 Toggle Switch
907C	2 Duplex Receptacles
915C	1 GFCI and 1 Duplex Receptacle





www.hubbell.com/raco
+1 (800) 992-7030
racocustomerservice@hubbell.com



A proud member of the Hubbell family.

©2023 RACO. All Rights Reserved.
Hubbell and the Hubbell logo are registered trademarks or
trademarks of Hubbell Incorporated.
All other trademarks are the property of their respective owners.
Specifications subject to change.

EP-RACO-BR-EN-00463 06/23