

C-RAIL FESTOON SYSTEMS

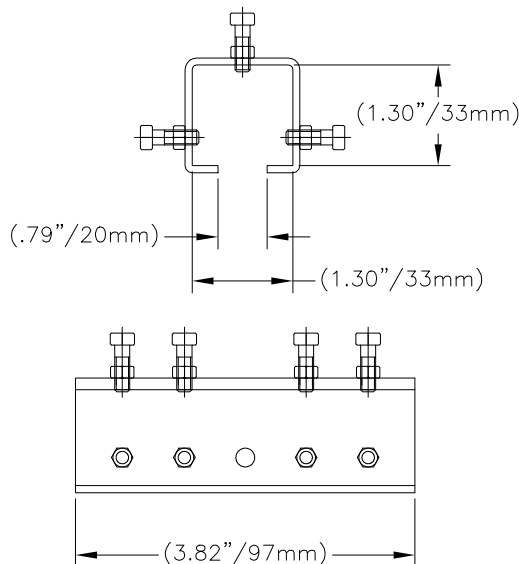
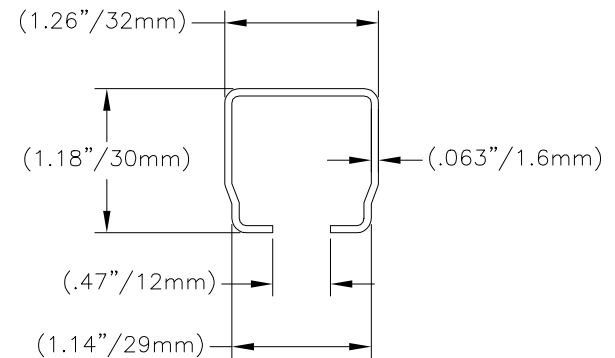


Indoor/Outdoor - damp, dirty environments for moderate work load. Designed for hoists, jib cranes, gantry cranes, plate and cleaning lines, and overhead CMAA Class A. B. C. D. cranes.

FEATURES:

- Galvanized C-Rail with zinc plated components and hardware
- Rubber clamp pads between trolley body and saddle for better clamping
- Lubricated and sealed bearings for smooth operation and long term reliability
- 30 lbs. per trolley loads
- 150 ft. per minute standard speed

C-RAIL Sections		
SECTION LENGTH	NET WGT.	CATALOG NO.
18 ft.	9.60 lbs.	C25-TR-18

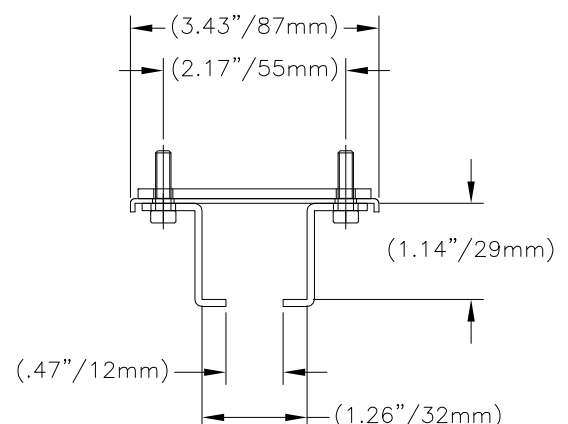


C-RAIL Bolted Joint Assembly	
NET WGT.	CATALOG NO.
.66 lbs.	C25-CP-01

Self-aligning, two-piece construction with locking cavities to prevent track separation. Center hole for visual confirmation that rail is fully inserted in joint assembly. Side bolts are supplied only on one side.

C-RAIL Hanger Assembly		
SUPPORT SPACING	NET WGT.	CATALOG NO.
EVERY 5 ft.	.49 lbs.	C25-HB-01

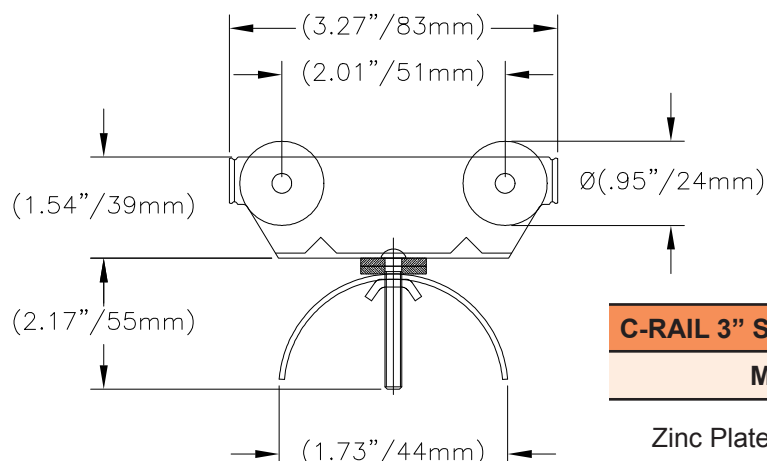
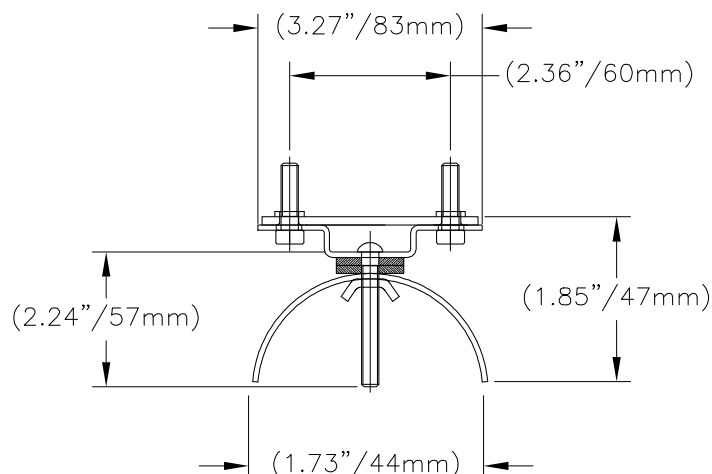
Used with both angle iron support brackets and C-Rail crossarm



C-RAIL End Clamp Assembly (for flat cable)

NET WGT.	CATALOG NO.
.66 lbs.	C25-FE-02

Steel cable saddle with hardware used to secure cable at storage end of track. One required for each run of C-RAIL.



C-RAIL 3\" Standard Trolley Assembly

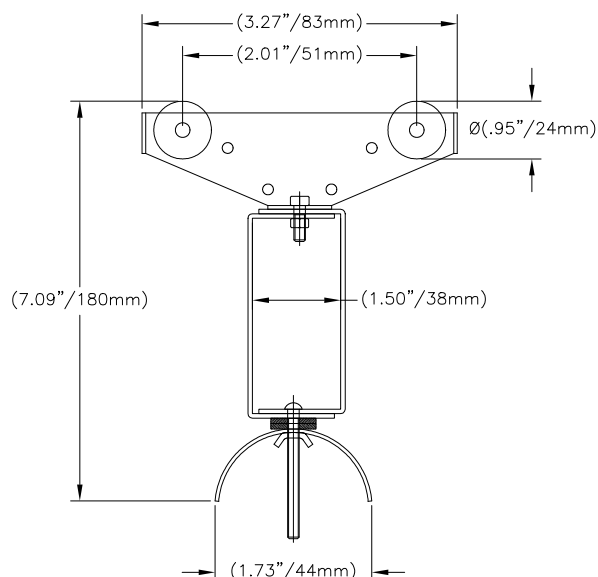
MATERIAL	NET WGT.	CATALOG NO.
Zinc Plated w/ Steel Wheels	.74 lbs.	C25-FC-32

Steel cable saddle and trolley used to support flat cable. Cables may be stacked in saddle.

C-RAIL Tow Trolley Assembly

MATERIAL	NET WGT.	CATALOG NO.
Zinc Plated w/ Steel Wheels	1.49 lbs.	C25-FT-32

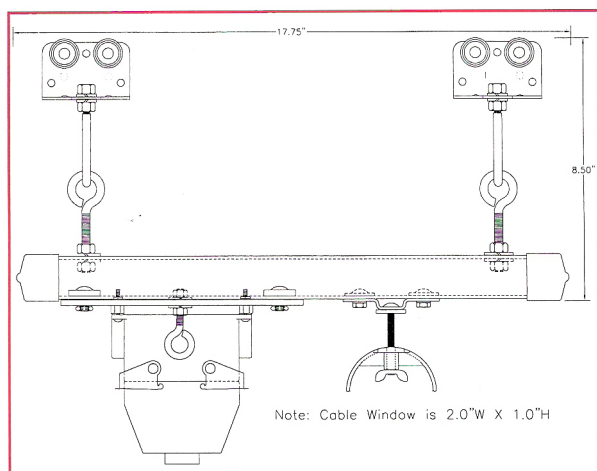
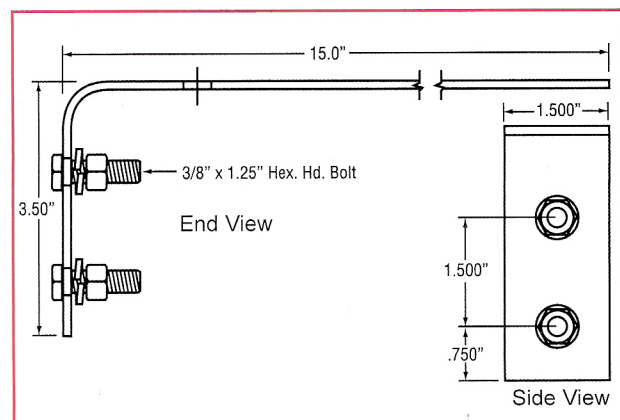
Trolley and cable assembly; used in conjunction with tow arm assembly.



C-RAIL Tow Arm Assembly

LENGTH	NET WGT.	CATALOG NO.
15 in.	1 lb. per foot	C25-CTA-F

Bent flatbar used to mount on moving equipment which is to be electrified. One required with each Tow Trolley.



C-RAIL Quick Connect Trolley

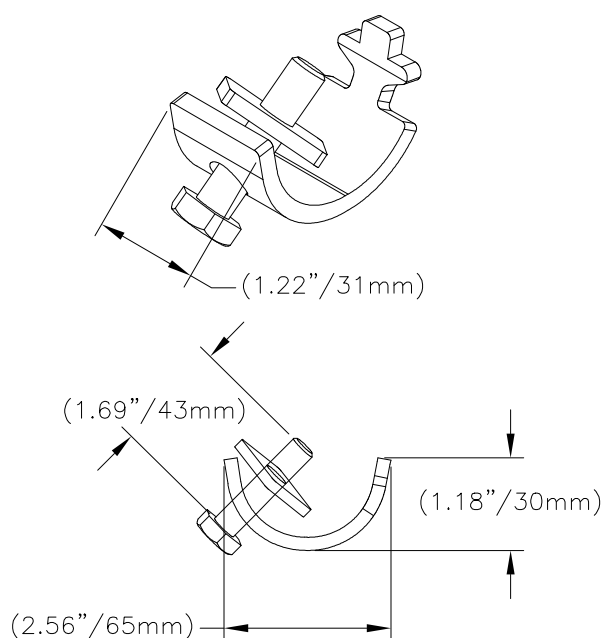
MATERIAL	NET WGT.	CATALOG NO.
Zinc Plated w/ Steel Wheels	4.08 lbs.	C25-CCB-Q16
Zinc Plated w/ Steel Wheels	4.40 lbs.	C25-CCB-Q24

Used to provide quick in-field change capabilities for Pushbutton Pendant stations, creating significantly reduced system repair downtime. Also available in 24 conductor assembly #F-CCB-Q24. Consult factory.

C-RAIL End Stop Assembly

NET WGT.	CATALOG NO.
.35 lbs.	C25-BC

For use in closing the active travel end of a C-RAIL run. One required for each run of C-RAIL.



Universal Cable Grips

Running industrial flat cables into electrical control panels has never been more convenient.

Our universal cable grip, with one size body fits flat cables ranging from 4 conductor #16 AWG, to 4 conductor #6 AWG up to 12 conductor #14 AWG.

Our unique 5 part construction, 2 body halves, rubber gasket, nut and interchangeable cap allows for ultimate flexibility. Our caps with various sized openings allow for a range of flat cables. The 1” NPT thread size in the neck of the cable grip body requires a standard 1.250” diameter hole cut into the electrical enclosure.

“No need to carry multiple hole saw cutting tools!”

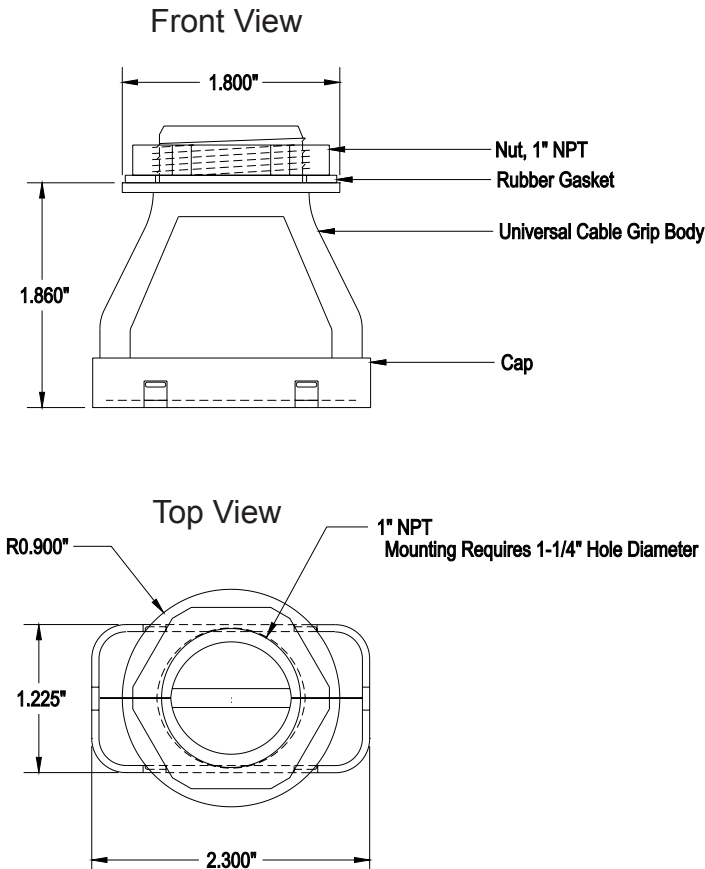


CAT. NUMBER	CABLE GRIP BODY
F-NMUCG-B1	4 Part Body (includes 2 pc. body halves, gasket and nut)
F-NMUCG-B1-10	Package of 10 pcs.
CAT. NUMBER	CABLE GRIP - CAP
See next page	Package of 10 pcs. (one size only)

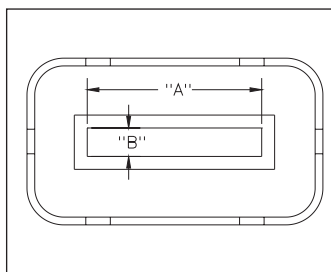
Universal Cable Grips

BENEFITS OF CONSTRUCTION

- Made from non-metallic, fire retardant, high-impact nylon compound
- Oil resistant, durable with temperature rating of -25°C to 81°C (-13°F to 177°F)
- Complete with rubber gasket to help prevent moisture penetration
- 2 part body incorporates interlocking frame for increased stability of construction
- Interchangeable caps for all the flat cable sizes listed in the chart below
- Requires a standard 1.250" diameter hole for mounting into the electrical enclosures



Each cap is clearly marked with a part number for easy identification of the correct cable size. See the chart below for the range of flat cable sizes and cap part numbers.



Part Number	"A"	"B"	For Flat Cable Cat. #	Flat Cable Description
F-NMUCG-C1-10	0.625"	0.195"	F-14/4	4 conductor # 14 AWG
F-NMUCG-C11-10	0.675"	0.215"	F-12/4	4 conductor # 12 AWG
F-NMUCG-C2-10	0.850"	0.250"	F-10/4	4 conductor # 10 AWG
F-NMUCG-C3-10	1.160"	0.345"	F-8/4	4 conductor # 8 AWG
F-NMUCG-C4-10	1.430"	0.420"	F-6/4	4 conductor # 6 AWG
F-NMUCG-C5-10	1.100"	0.185"	F-16/8	8 conductor # 16 AWG
F-NMUCG-C51-10	1.120"	0.195"	F-14/8	8 conductor # 14 AWG
F-NMUCG-C6-10	1.113"	0.225"	F-12/8	8 conductor # 12 AWG
F-NMUCG-C7-10	1.575"	0.185"	F-16/12	12 conductor # 16 AWG
F-NMUCG-C71-10	1.630"	0.195"	F-14/12	12 conductor # 14 AWG