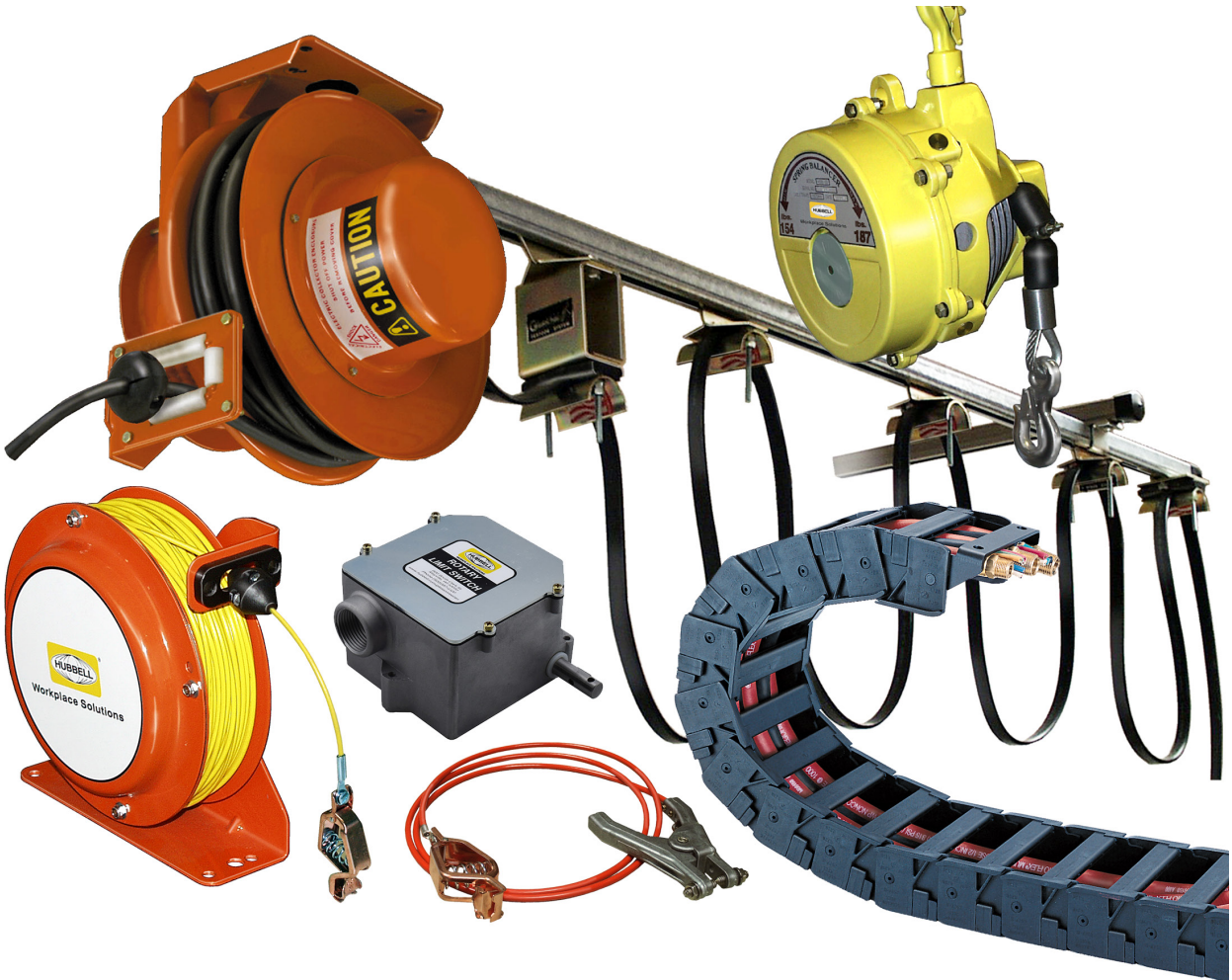




PRE-ENGINEERED PRODUCTS GROUP



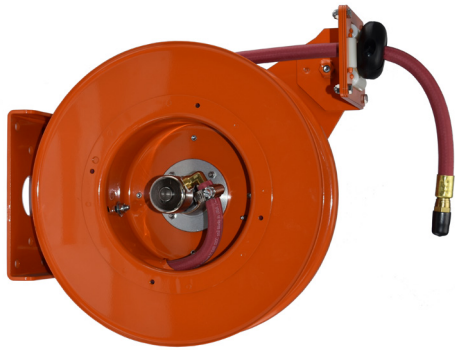
- Spring Powered Cord, Cable & Hose Reels
 - C-Rail and Wire Rope Festoon Kits
- Non-Metallic Cable Carrier Kits
- Limit Switches
- Static Discharge Reels
- Tool Balancer Reels



www.hubbell.com/gleasonreel/en

Minimize Damage, Reduce Danger and Improve Productivity by Properly Managing Cords, Cables & Hoses in Your Workplace

Effective management reduces cuts and abrasion to cords, cables and hoses, eliminates dangerous and time consuming tangles, and helps keep machinery operating at peak efficiency. The Gleason Pre-engineered Products Group includes standard reels, cable carriers and festoon systems designed to solve most situations.



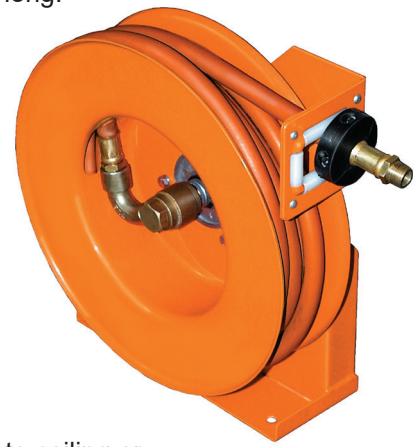
- Hose & Cable Reels -

Heavy Duty Single Hose Reels

Hand pull or machine mount connecting machines to air/water supply. May be mounted base up, down or to wall for vertical or horizontal hose travel. 1/4", 3/8" or 1/2" hose, 25', 35' or 50' long. 340° pivot available.

Industrial Hose Reels

Open spool hose reels with automatic spring rewind. Ideal for mounting under work bench. May also be hung from wall or ceiling. 1/4", 3/8" or 1/2" hose, in lengths to 50'. Durable baked polyester finish.



Compact Cord Reels

Closed spool design may be mounted to ceiling or wall. Available with LED, incandescent, fluorescent lamp, single or triple outlet. Heavy gauge steel housing. 26" pig tail plugs into standard outlet. Also available with bare cord or with plug on cord and outlet on pigtail for cart mounting.

Industrial Cord Reels

Ideal for wide variety of industrial applications mounted to wall, ceiling or under work bench. Available with single outlet, duplex box, incandescent, LED, fluorescent lamp, or bare cord. Open spool design. Rugged aluminum construction with non-conductive, hi-impact polyester collector cover. Cords to 70' long.



Heavy Duty Electric Cable Reels

Fully automatic rewind. Machine mountable. Smaller models may also be hand pull. 14" to 28" spool diameters. 6 AWG to 16 AWG cable, three to twelve conductors, lengths to 100 feet. All welded steel construction. Many options available

- Festoon Systems -

Wire Rope Festoon Kits

Pre-engineered kits take mystery out of festooning. Each kit includes everything you need. Just add cable or hose. Kits for flat cable or round cable/hose. Travel distances to 60'. Available with exclusive nylon *Lock 'n Roll*™ trolleys or steel trolleys.

C-Rail Festoon Kits

Specially Designed for Overhead Cranes

Install a high speed, smooth operating festoon system on an overhead crane or similar application. Kits include all required parts including mounting arms and brackets.

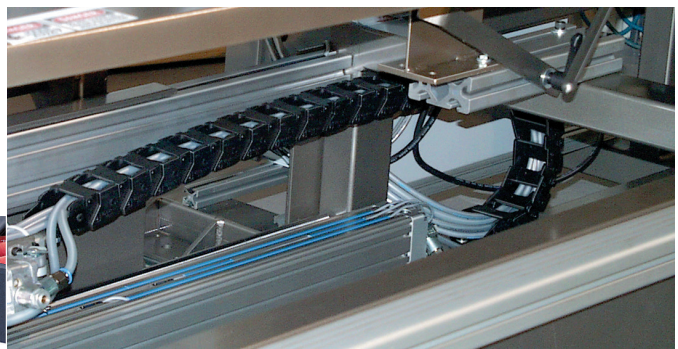
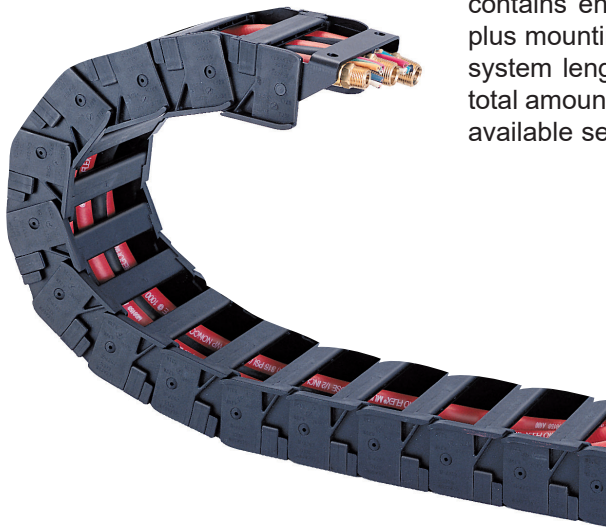


- Cable / Hose Carriers - Non-metallic

Cable Carriers protect cables and hoses on reciprocating machinery. Safety and reliability are increased when cables and hoses are kept together, away from moving components. Durable links are molded from fiber-reinforced virgin nylon which is highly wear-resistant, self lubricating and not damaged by salt or hard water, lubricating oils or hydrocarbons such as fuels. Large variety of sizes for cable or hose up to 1.676" dia. Flip top and totally enclosed designs also available.

Available in Bulk or Easily Assembled Kits

Links easily snap together to customize length to exactly meet your requirements. There are "Basic Kits" and "Extender Kits". Each basic kit contains enough trak for 3' of machine travel (6' when center mounted) plus mounting brackets. Extender kits each have 12" of trak for increasing system length. Bulk trak is sold by full carton only, in 3' lengths with the total amount in each carton determined by trak size. Mounting brackets are available separately.



- Rotary Limit Switches -

Control Machines & Provide Overtravel Protection

Limit the travel of electrically operated doors, conveyors, hoists, machine tool work tables and similar devices. Equipment having rotating mechanisms, or linear motion which can be translated into rotational motion, can be controlled by these versatile switches. Switches feature rugged die-cast enclosures, two or four circuits, choice of four gear ratios and standard, long dwell or fine adjustment cams. NEMA 1, NEMA 4, NEMA 7/9 or NEMA 12.



- Tool Balancers -

Make Tools Virtually Weightless

Three types of balancers handle tools from 0.5 lbs. to 187 lbs. All feature rugged housings, easy adjustment and steel cables. Complete range of accessories including safety cables, hanger clevises, etc. Retractors and Torque Reels available for specialized applications.



- Static Discharge -

Open or Closed Spool Reels, Bonding Cables

Ground portable equipment or prevent sparks from static electricity generated by movement and flow of flammable liquids. Reels are rugged steel construction. Open and closed spool reels and bonding cables offered with wide variety of grounding clamps and plugs. Closed spool reel also available with "Y" cable for dual grounding. Bonding cables up to 20' in length reels up to 100' long cable. Various connectors and a grounding well also available separately.



Gleason Reel Corp.

600 South Clark St.

Mayville, WI 53050

PH: 920-387-4120

www.hubbell.com/gleasonreel/en