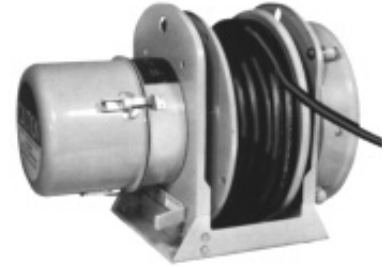
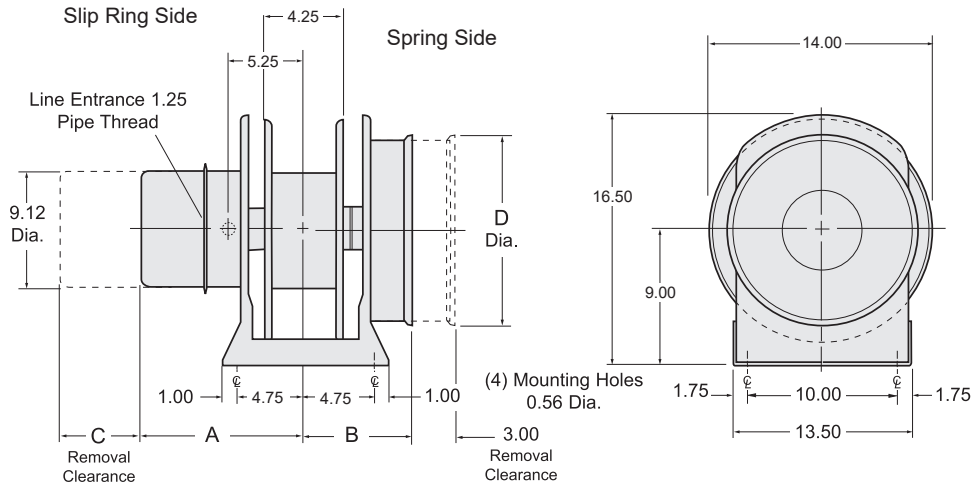


S14

DIRECT DRIVE

Dimensional Data & Optional Accessories

DIMENSIONS



Cable payout, as pictured above, denotes standard rotation.

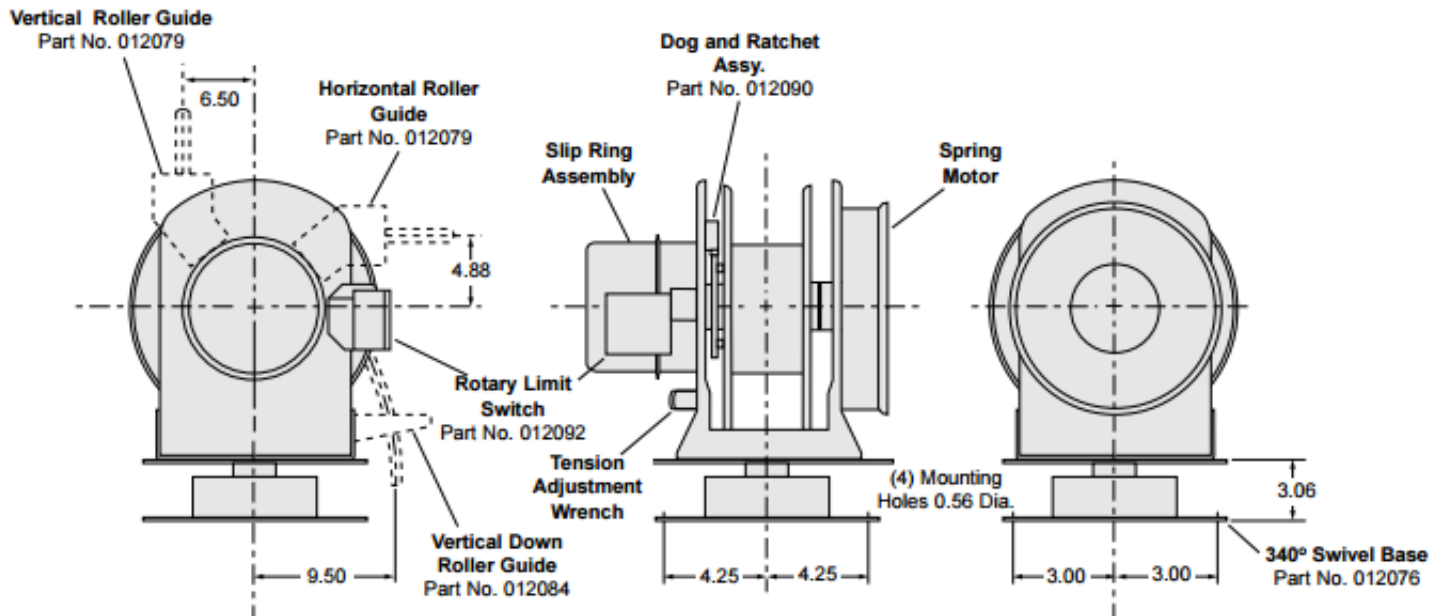
SLIP RING HOUSING DIMENSIONS

Second Series of Digits in Model Number	23	63
	33	83
	43	27
"A" Dimensions in Inches	14.50	17.00
"C" Dimensions in Inches	8.50	11.00

SPRING MOTOR DIMENSIONS

Model Number	S14351	S14601	S14751
"B" Dimensions in Inches	6.60	6.60	7.12
"D" Diameter in Inches	10.56	10.56	14.38
Approx. Net Weight of Reel with Spring Motor(s)	85 lbs.	90 lbs.	95 lbs.

OPTIONAL ACCESSORIES

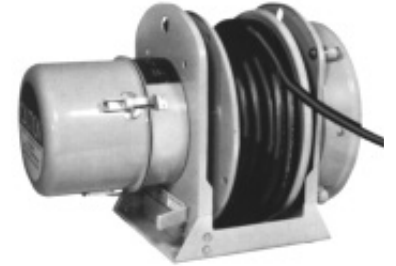
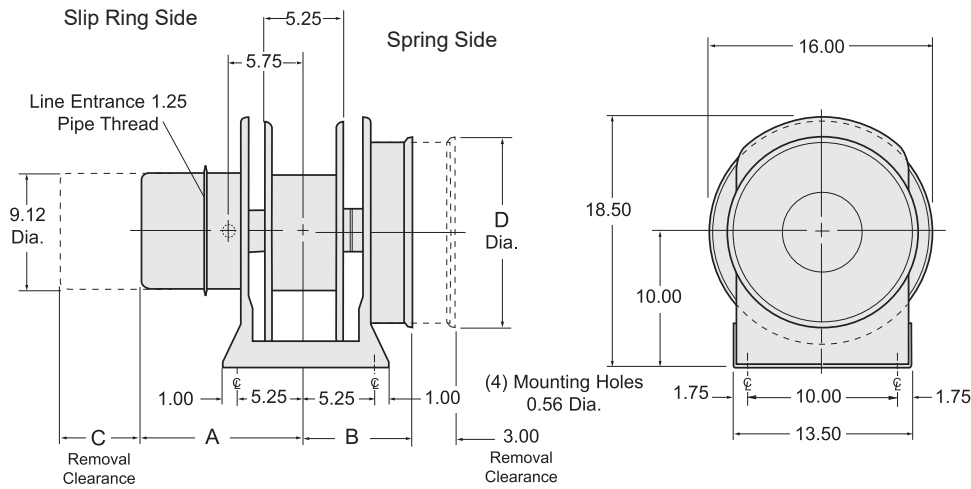


S16

DIRECT DRIVE

Dimensional Data & Optional Accessories

DIMENSIONS



Cable payout, as pictured above, denotes standard rotation.

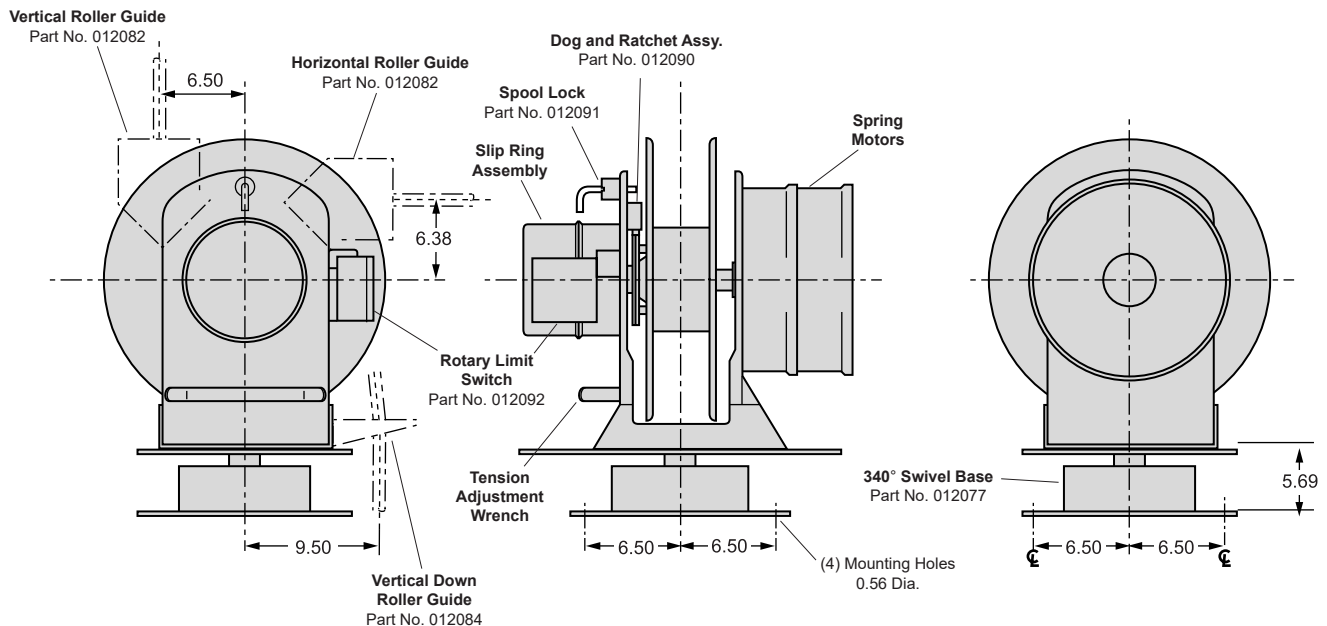
SLIP RING HOUSING DIMENSIONS

Second Series of Digits in Model Number	23	63	130	143	203
	33	83	123	163	
	43	27			
		37			
		47			
"A" Dimensions in Inches	15.00	17.50	20.00	22.50	27.50
"C" Dimensions in Inches	8.50	11.00	13.50	16.00	21.00

SPRING MOTOR DIMENSIONS

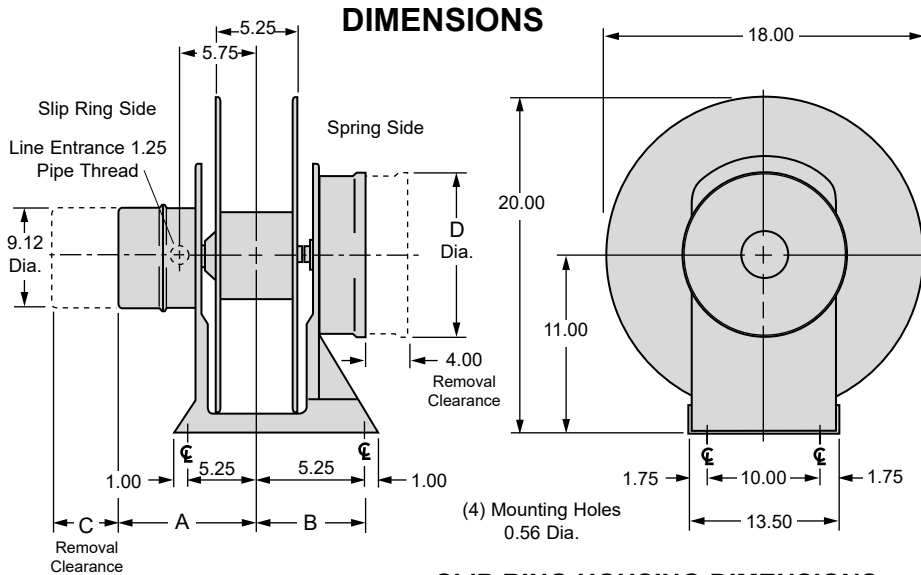
Model Number	S16351	S16601	S16621	S16622	S16751	S16801
"B" Dimensions in Inches	7.10	7.10	7.62	10.25	7.62	7.62
"D" Diameter in Inches	10.56	10.56	14.38	14.38	10.56	14.38
Approx. Net Weight of Reel with Spring Motor(s)	95 lbs.	100 lbs.	120 lbs.	170 lbs.	105 lbs.	135 lbs.

OPTIONAL ACCESSORIES



S18 DIRECT DRIVE

Dimensional Data & Optional Accessories



Cable payout, as pictured above, denotes reverse rotation.

SLIP RING HOUSING DIMENSIONS

Second Series of Digits in Model Number

23	63	37	103	143	203
33	83	47	123	163	243
43	27	212			

"A" Dimension-Inches

15.00	17.50	20.00	22.50	27.50
-------	-------	-------	-------	-------

"C" Dimension-Inches

8.50	11.00	13.50	16.00	21.00
------	-------	-------	-------	-------

SPRING MOTOR DIMENSIONS

MODEL NUMBER

S18621	S18622	S18751	S18801	S18802
--------	--------	--------	--------	--------

"B" Dimension in Inches

7.62	10.25	7.62	7.62	10.25
------	-------	------	------	-------

"D" Diameter in Inches

14.38	14.38	10.56	14.38	14.38
-------	-------	-------	-------	-------

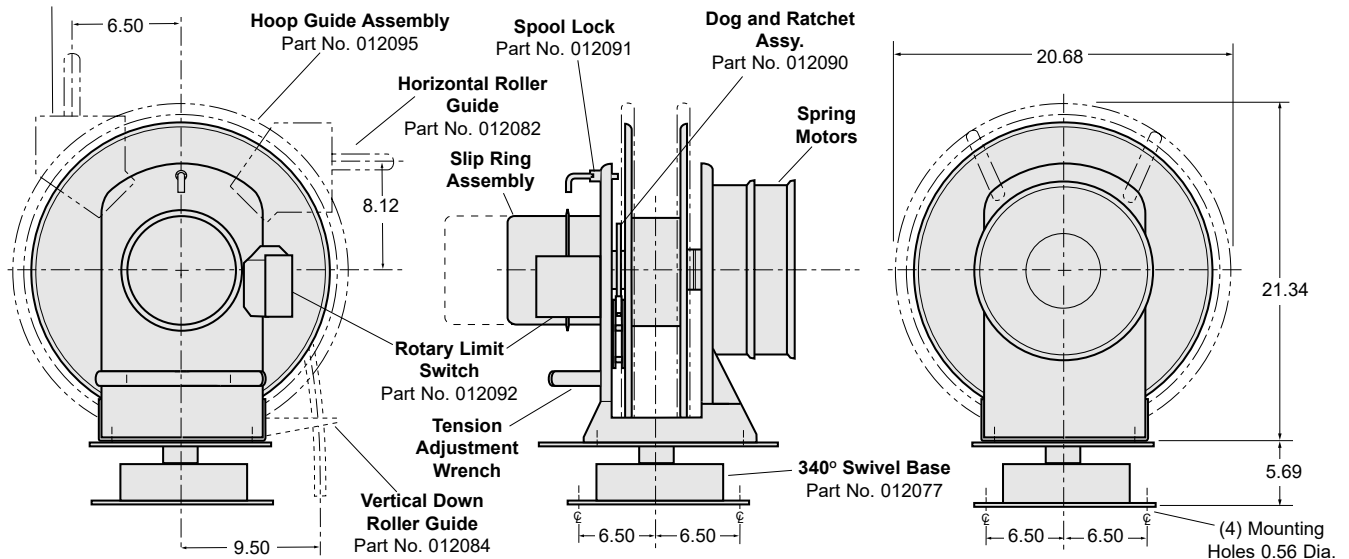
Approximate Net Weight of Reel with Spring Motor(s)

130	180	115	145	200
-----	-----	-----	-----	-----

OPTIONAL ACCESSORIES

Vertical Roller Guide
Part No. 012082

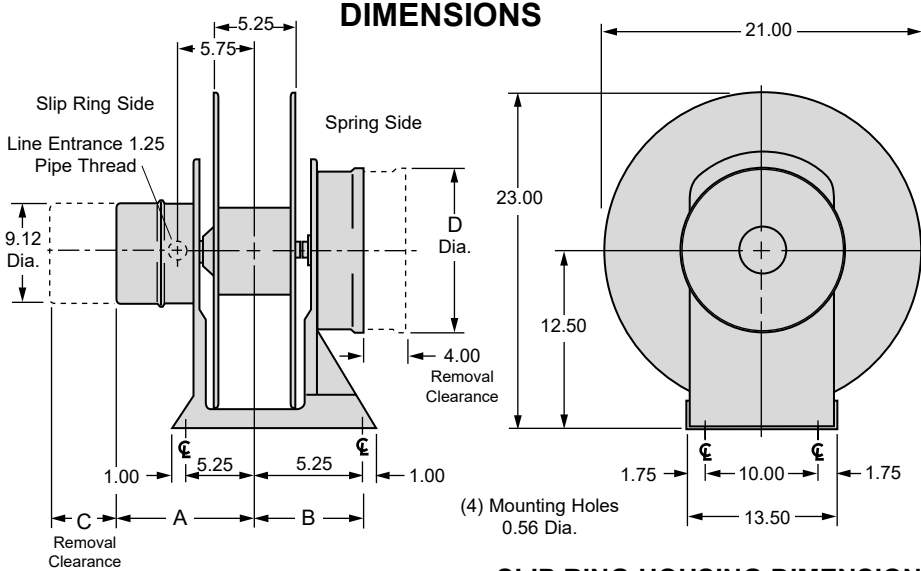
If Hoop Guides are used, optional Roller Guides may be found on page 16.



S21 DIRECT DRIVE

Dimensional Data & Optional Accessories

DIMENSIONS



Cable payout, as pictured above, denotes reverse rotation.

SLIP RING HOUSING DIMENSIONS

Second Series of Digits in Model Number	23	63	37	103	143	203	303
	33	83	47	123	163	243	363
	43	27	212	312	412		
"A" Dimension-Inches	15.00	17.50	20.00	22.50	27.50	35.50	
"C" Dimension-Inches	8.50	11.00	13.50	16.00	21.00	29.00	

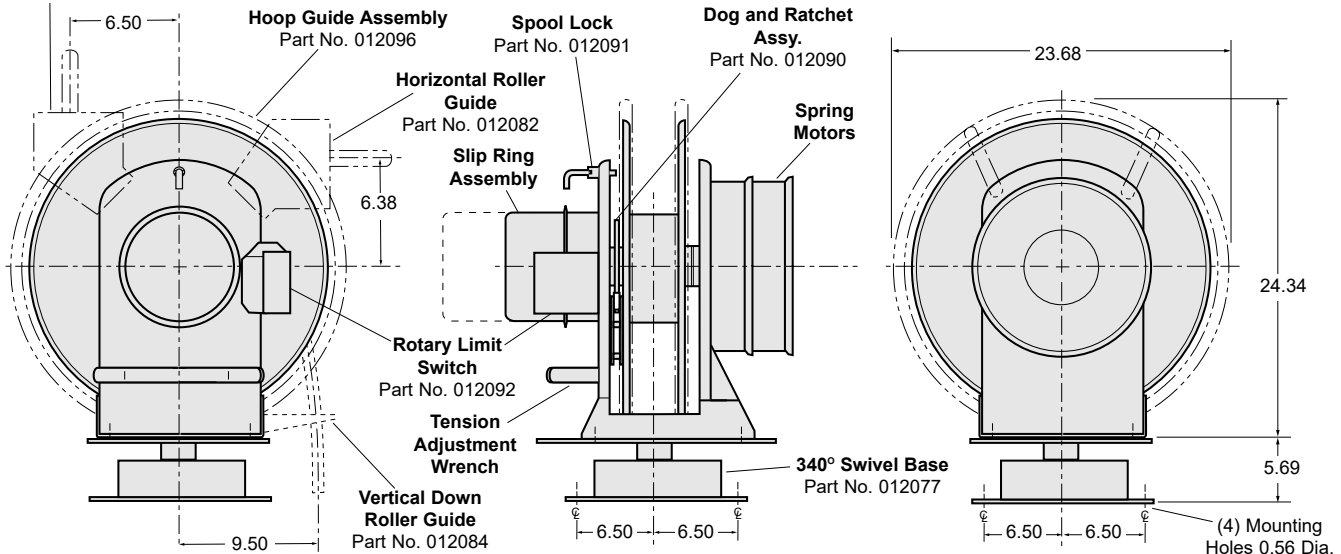
SPRING MOTOR DIMENSIONS CON'T

MODEL NUMBER	S21621	S21622	S21751	S21752	S21801	S21802	S211001
"B" Dimension in Inches	7.62	10.25	7.62	10.25	7.62	10.25	8.50
"D" Diameter in Inches	14.38	14.38	10.56	10.56	14.38	14.38	14.38
Approximate Net Weight of Reel with Spring Motor(s)	140	190	125	175	155	210	165

OPTIONAL ACCESSORIES

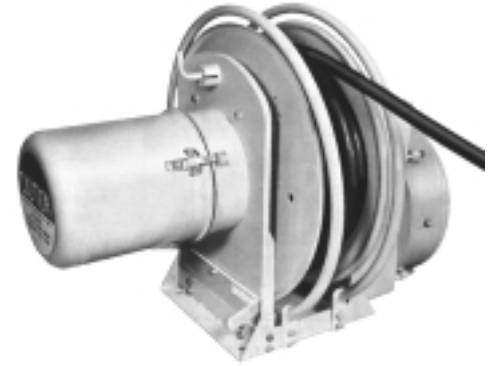
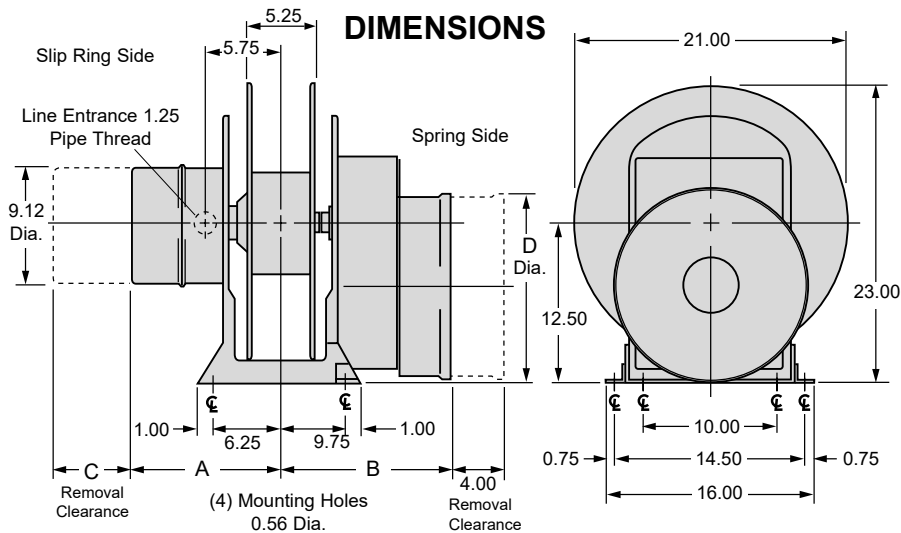
Vertical Roller Guide
Part No. 012082

If Hoop Guides are used, optional Roller Guides may be found on page 16.



S21 GEARED DRIVE

Dimensional Data & Optional Accessories



Cable payout, as pictured above, denotes standard rotation.

NOTE: Above illustration includes some of the optional accessories described below.

SLIP RING HOUSING DIMENSIONS

Second Series of Digits in Model Number	23	63
	33	83
	43	
"A" Dimension in Inches	15.00	17.50
"C" Dimension in Inches	8.50	11.00

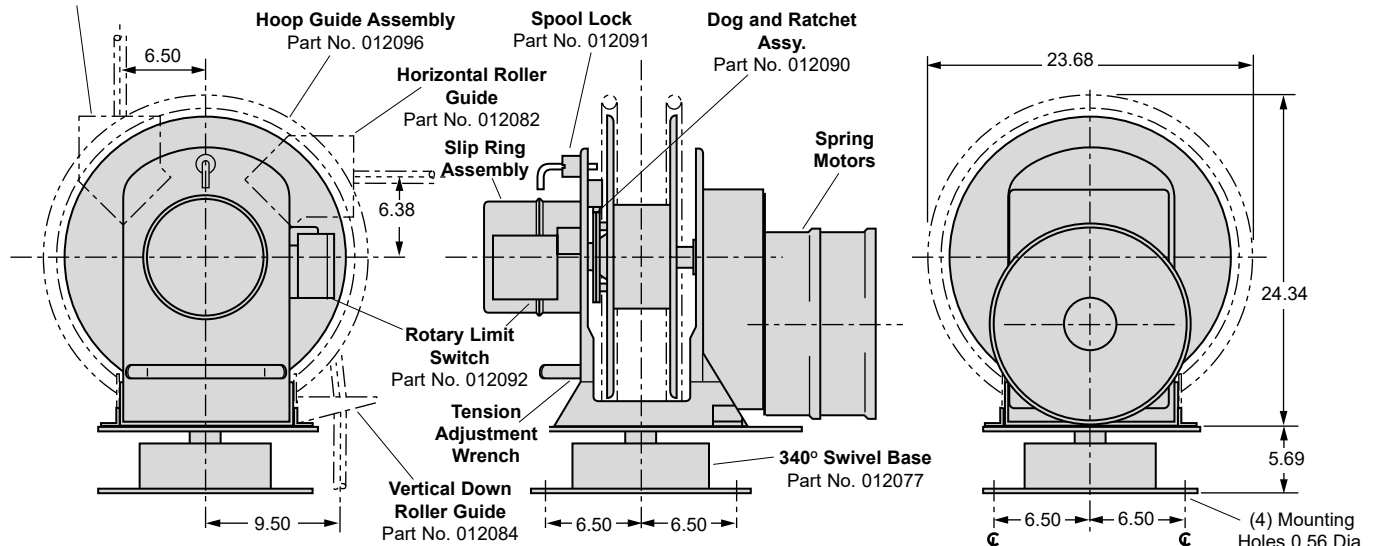
SPRING MOTOR DIMENSIONS

MODEL NUMBER	S21801	S21802	S21803	S21804	S211001	S211002
"B" Dimension in Inches	12.62	15.25	17.88	20.50	13.50	16.88
"D" Diameter in Inches	14.38	14.38	14.38	14.38	14.38	14.38
Approximate Net Weight of Reel with Spring Motor(s)	180 lbs.	235 lbs.	290 lbs.	345 lbs.	190 lbs.	250 lbs.

OPTIONAL ACCESSORIES

Vertical Roller Guide
Part No. 012082

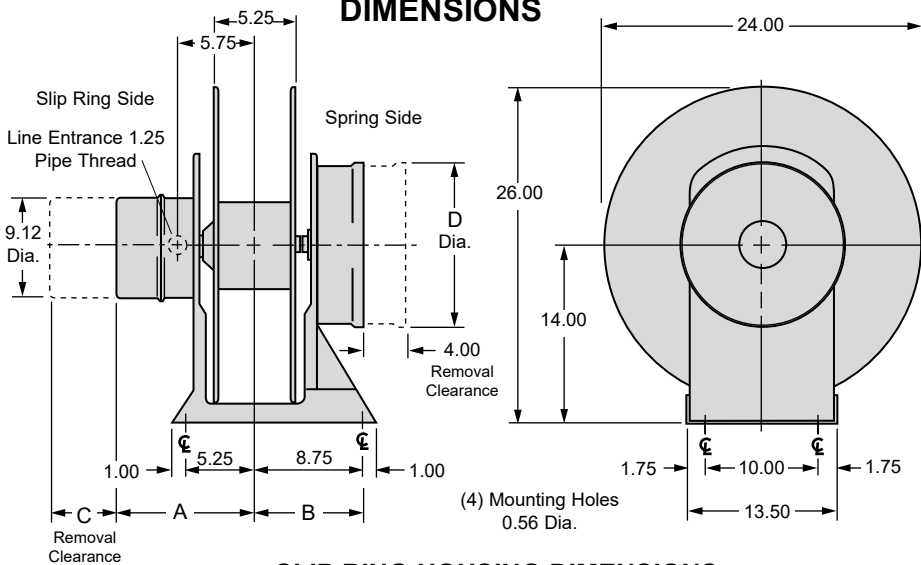
If Hoop Guides are used, optional Roller Guides may be found on page 16.



S24 DIRECT DRIVE

Dimensional Data & Optional Accessories

DIMENSIONS



Cable payout, as pictured above, denotes reverse rotation.

SLIP RING HOUSING DIMENSIONS

Second Series of Digits in Model Number

23	63	212	103	143	203	303
33	83	220	123	163	243	363
43	27	320	312	412		
	37	420				
	47					
"A" Dimension-Inches	15.00	17.50	20.00	22.50	27.50	35.50
"C" Dimension-Inches	8.50	11.00	13.50	16.00	21.00	29.00

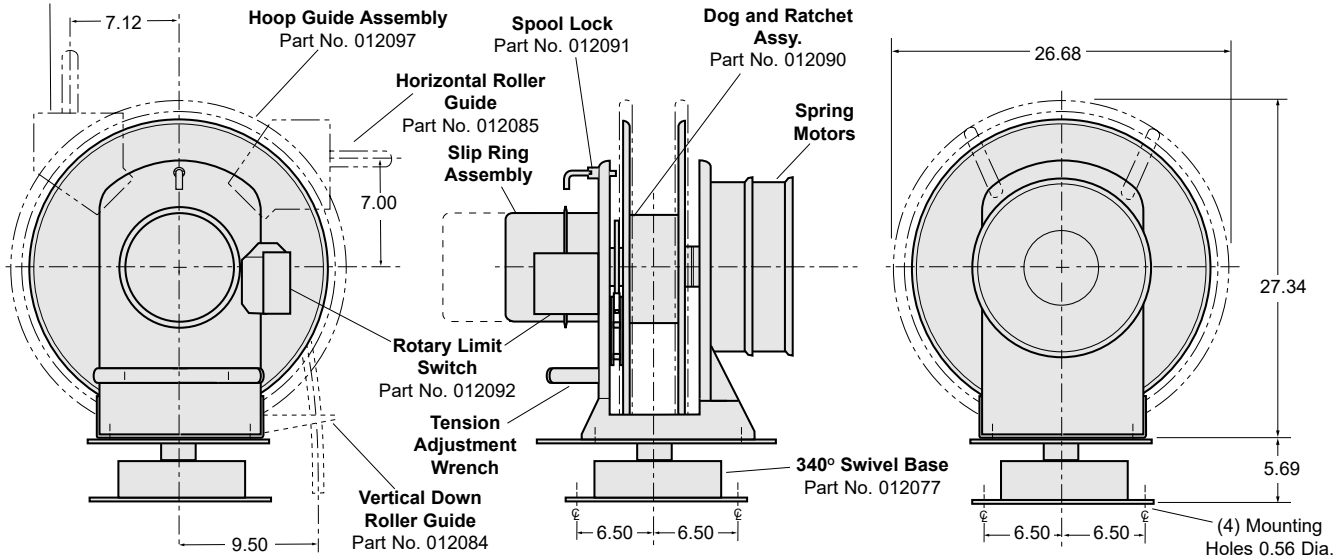
SPRING MOTOR DIMENSIONS CON'T

MODEL NUMBER	S24621	S24622	S24623	S24624	S24751	S24752	S24753	S24801	S24802	S24803	S24804	S241001	S241002
"B" Dimension in Inches	7.62	10.25	12.88	15.50	7.62	10.25	12.88	7.62	10.25	12.88	15.50	8.50	11.88
"D" Diameter in Inches	14.38	14.38	14.38	14.38	10.56	10.56	10.56	14.38	14.38	14.38	14.38	14.38	14.38
Approximate Net Weight of Reel with Spring Motor(s)	150	200	250	300	135	185	235	165	220	275	330	175	235

OPTIONAL ACCESSORIES

Vertical Roller Guide
Part No. 012085

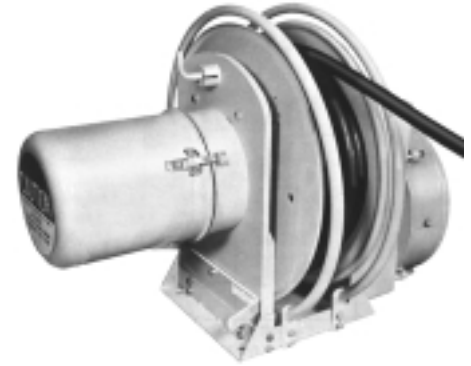
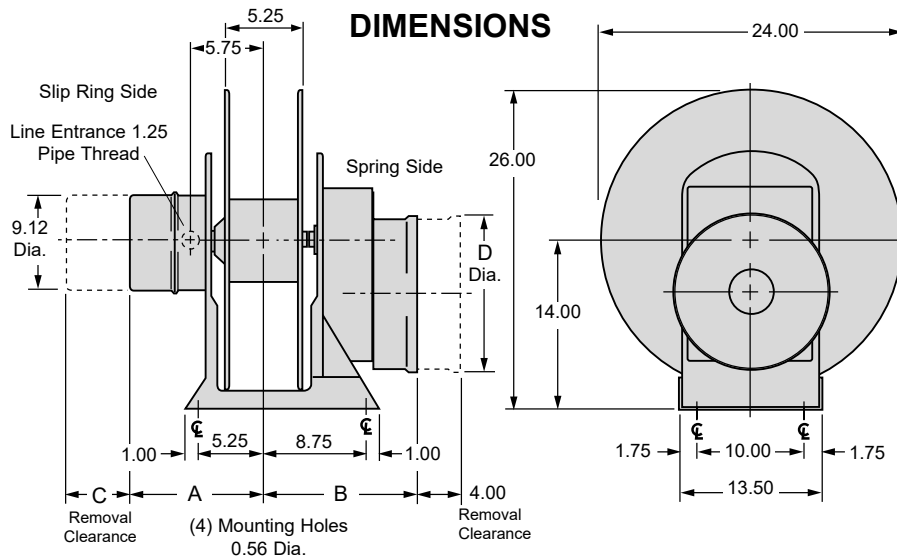
If Hoop Guides are used, optional Roller Guides may be found on page 16.



S24

GEARED DRIVE

Dimensional Data & Optional Accessories



Cable payout, as pictured above, denotes standard rotation.

NOTE: Above illustration includes some of the optional accessories described below.

SLIP RING HOUSING DIMENSIONS

Second Series of Digits in Model Number

23	63	103	163	
33	83	123		
43	27	37		
	47			
"A" Dimension in Inches	15.00	17.50	20.00	22.50
"C" Dimension in Inches	8.50	11.00	13.50	16.00

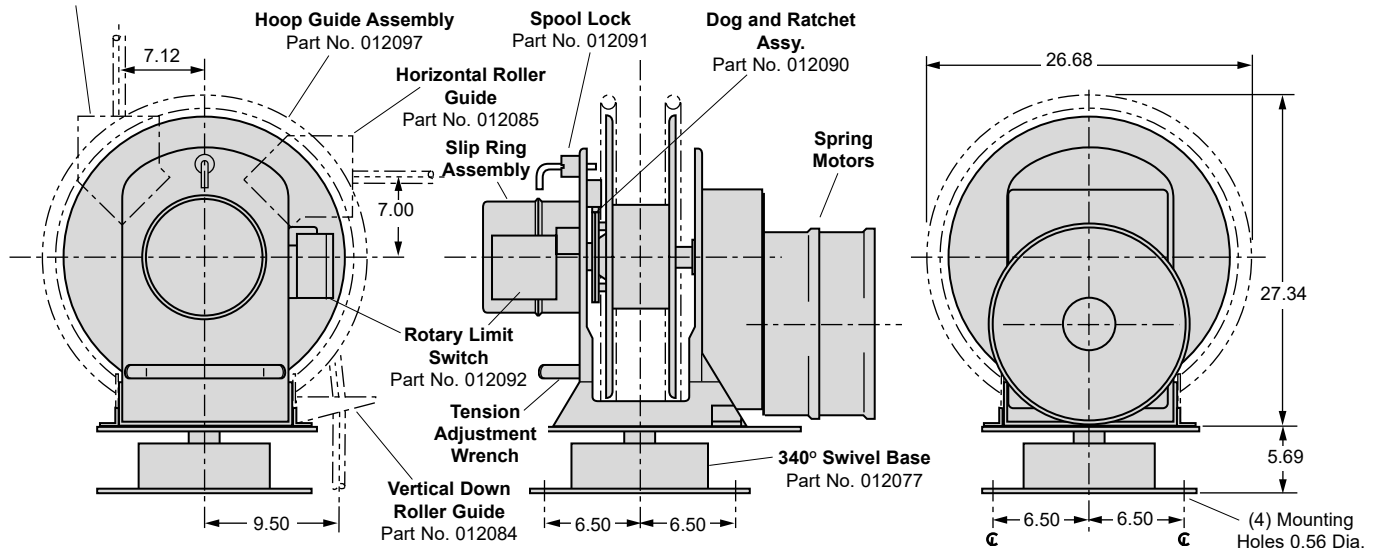
SPRING MOTOR DIMENSIONS

MODEL NUMBER	S24801	S24802	S24803	S24804	S241001	S241002
"B" Dimension in Inches	12.62	15.25	17.88	20.50	13.50	16.88
"D" Diameter in Inches	14.38	14.38	14.38	14.38	14.38	14.38
Approximate Net Weight of Reel with Spring Motor(s)	190 lbs.	245 lbs.	300 lbs.	355 lbs.	200 lbs.	260 lbs.

OPTIONAL ACCESSORIES

Vertical Roller Guide
Part No. 012085

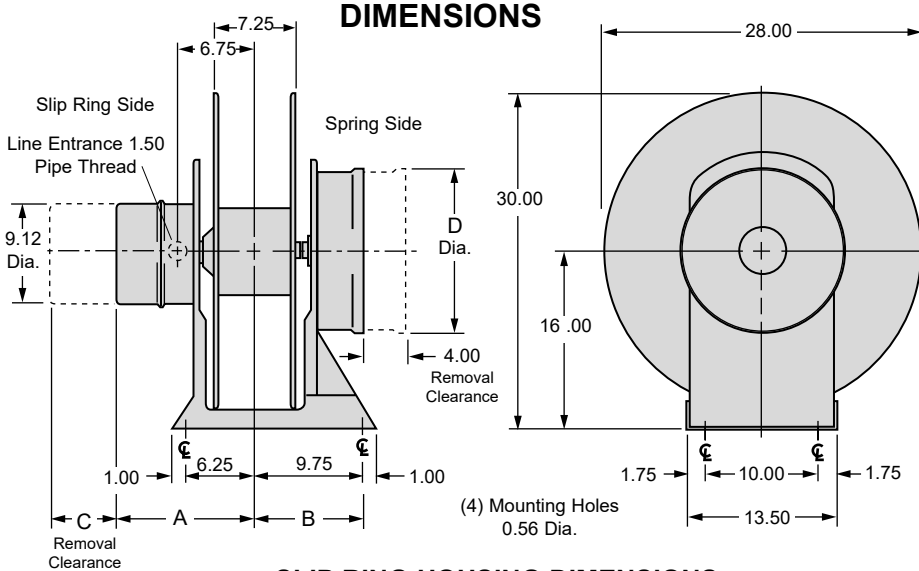
If Hoop Guides are used, optional Roller Guides may be found on page 16.



S28 DIRECT DRIVE

Dimensional Data & Optional Accessories

DIMENSIONS



Cable payout, as pictured above, denotes reverse rotation.

SLIP RING HOUSING DIMENSIONS

Second Series of Digits in Model Number

23	63	212	103	143	203	303	
33	83	220	123	163	243	363	
43	27	320	312	412			
	37	420					
	47						
"A" Dimension-Inches		16.00	18.50	21.00	23.50	28.50	36.50
"C" Dimension-Inches		8.50	11.00	13.50	16.00	21.00	29.00

SPRING MOTOR DIMENSIONS

MODEL NUMBER	S28621	S28622	S28623
"B" Dimension-inches	8.62	11.25	13.88
"D" Diameter-inches	14.38	14.38	14.38
Approx. Net Weight-lbs.*	165	215	265

SPRING MOTOR DIMENSIONS CON'T

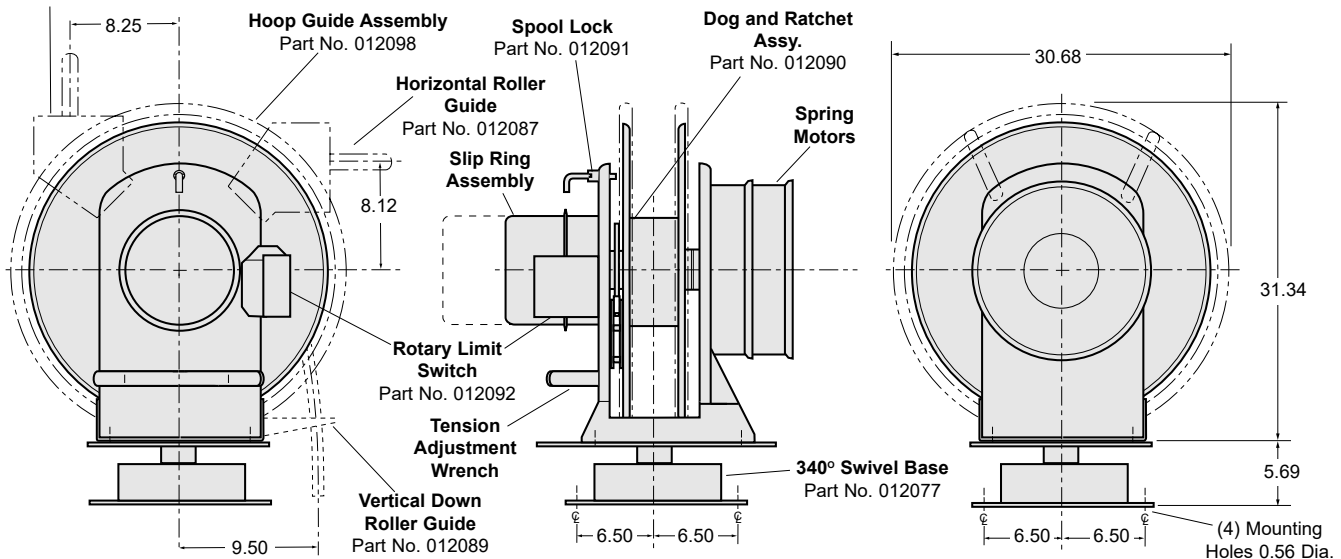
MODEL NUMBER	S28624	S28751	S28752	S28753	S28754	S28801	S28802	S28803	S28804	S281001	S281002	S281003	S281004
"B" Dimension-inches	16.50	8.62	11.25	13.88	16.50	8.62	11.25	13.88	16.50	9.50	12.88	16.25	19.62
"D" Diameter-inches	14.38	10.56	10.56	10.56	10.56	14.38	14.38	14.38	14.38	14.38	14.38	14.38	14.38
Approx. Net Weight-lbs.*	315	150	200	250	300	180	235	290	345	190	250	310	370

* Approximate Net Weight of Reel with Spring Motor(s) Designated

OPTIONAL ACCESSORIES

Vertical Roller Guide
Part No. 012087

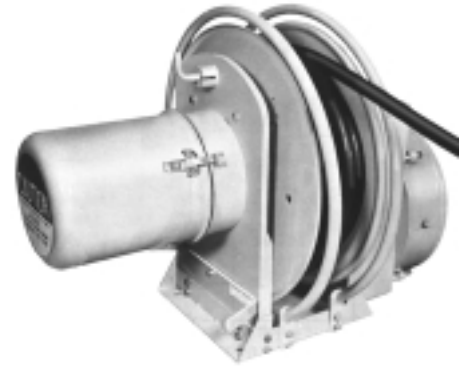
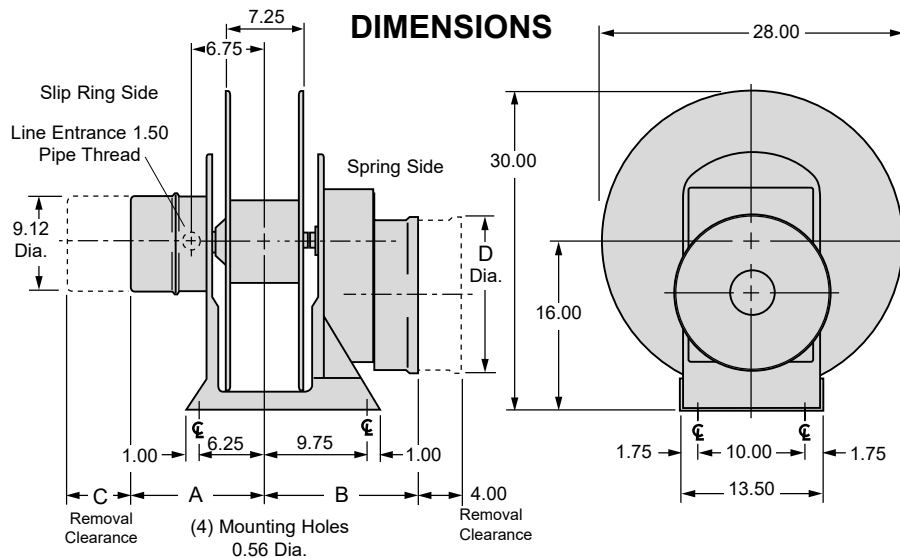
If Hoop Guides are used, optional Roller Guides may be found on page 16.



S28

GEARED DRIVE

Dimensional Data & Optional Accessories



Cable payout, as pictured above, denotes standard rotation.

NOTE: Above illustration includes some of the optional accessories described below.

SLIP RING HOUSING DIMENSIONS

Second Series of Digits in Model Number

"A" Dimension in Inches
"C" Dimension in Inches

23	63	212	103	143	203	303
33	83	220	123	163	243	363
43	27	312	412			
	37					
	47					
16.00	18.50	21.00	23.50	28.50	36.50	
8.50	11.00	13.50	16.00	21.00	29.00	

SPRING MOTOR DIMENSIONS

MODEL NUMBER

"B" Dimension in Inches
"D" Diameter in Inches

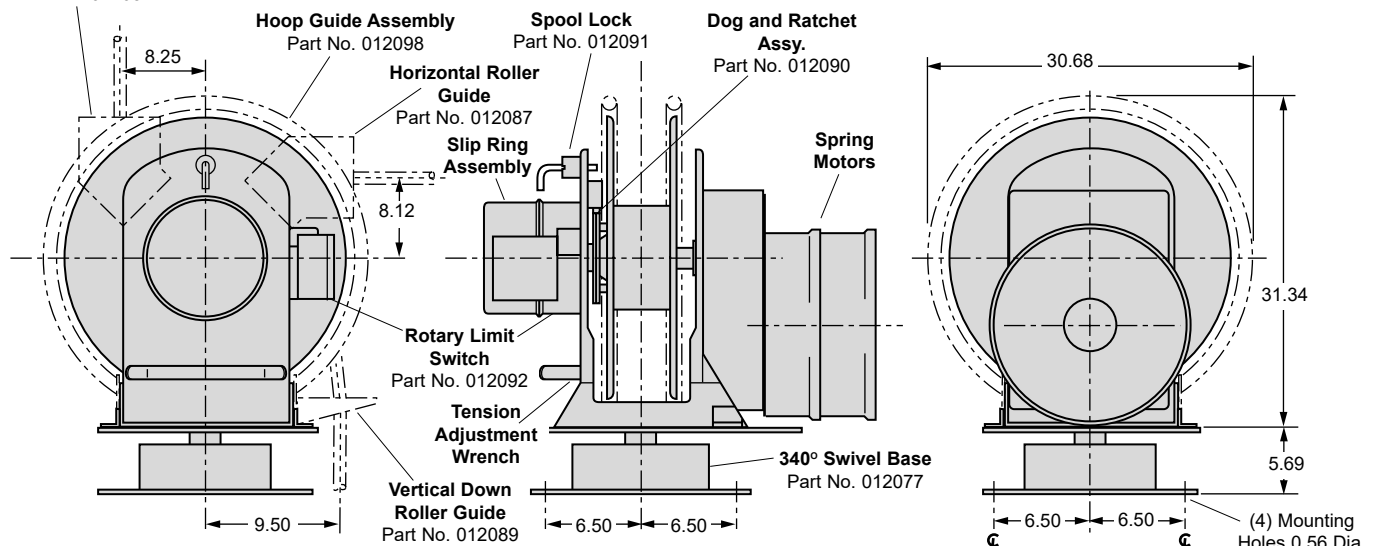
Approximate Net Weight of Reel with Spring Motor(s)

S28801	S28802	S28803	S28804	S281001	S281002	S281003	S281004
13.62	16.25	18.88	21.50	14.50	17.88	21.25	24.62
14.38	14.38	14.38	14.38	14.38	14.38	14.38	14.38
205 lbs.	260 lbs.	315 lbs.	370 lbs.	215 lbs.	275 lbs.	335 lbs.	395 lbs.

OPTIONAL ACCESSORIES

Vertical Roller Guide
Part No. 012087

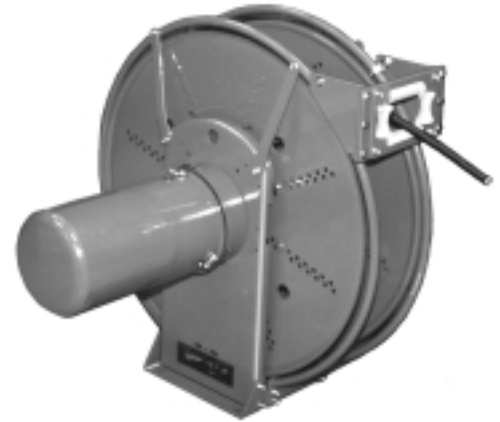
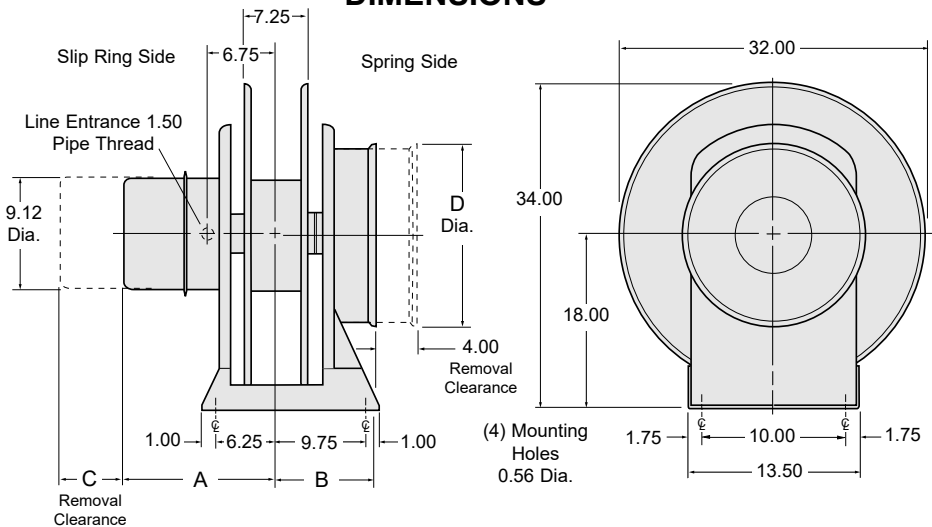
If Hoop Guides are used, optional Roller Guides may be found on page 16.



S32 DIRECT DRIVE

Dimensional Data & Optional Accessories

DIMENSIONS



Cable payout, as pictured above, denotes standard rotation.

NOTE: Above illustration includes some of the optional accessories described below.

SLIP RING HOUSING DIMENSIONS

Second Series of Digits in Model Number

"A" Dimension in Inches
"C" Dimension in Inches

23	63	212	103	143	203	303
33	83	220	123	163	243	363
43	27	320	312	412		
	37	420				
	47					
16.00	18.50	21.00	23.50	28.50	36.50	
8.50	11.00	13.50	16.00	21.00	29.00	

SPRING MOTOR DIMENSIONS

MODEL NUMBER

"B" Dimension in Inches
"D" Diameter in Inches

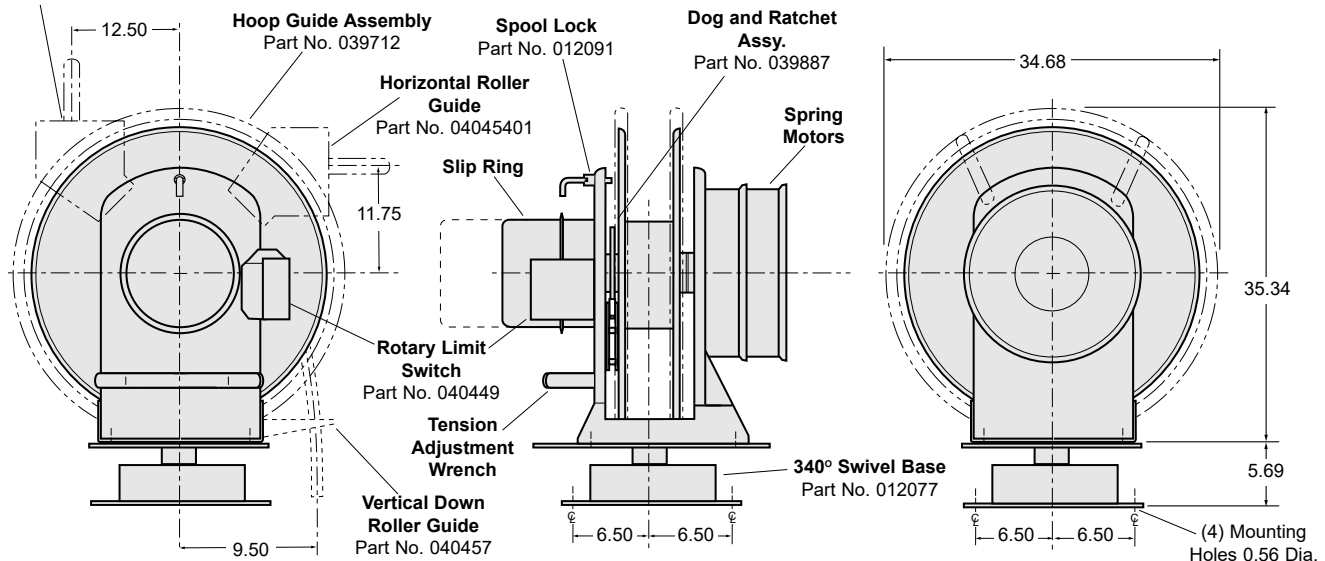
Approximate Net Weight of Reel with Spring Motor(s)

MODEL NUMBER	S32801	S32802	S32803	S32804	S321001	S321002	S321003	S321004
"B" Dimension in Inches	8.62	11.25	13.88	16.50	9.50	12.88	16.25	19.62
"D" Diameter in Inches	14.38	14.38	14.38	14.38	14.38	14.38	14.38	14.38
Approximate Net Weight of Reel with Spring Motor(s)	200 lbs.	260 lbs.	320 lbs.	380 lbs.	210 lbs.	275 lbs.	340 lbs.	410 lbs.

OPTIONAL ACCESSORIES

Vertical Roller Guide
Part No. 04045401

If Hoop Guides are used, optional Roller Guides may be found on page 16.

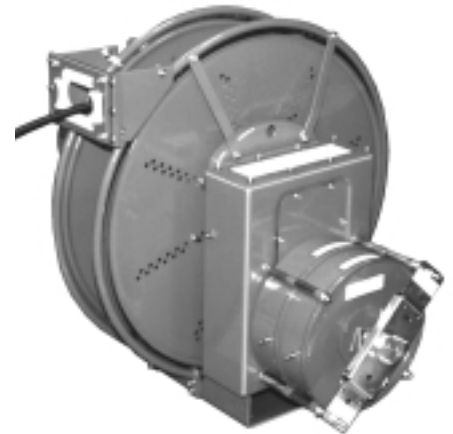
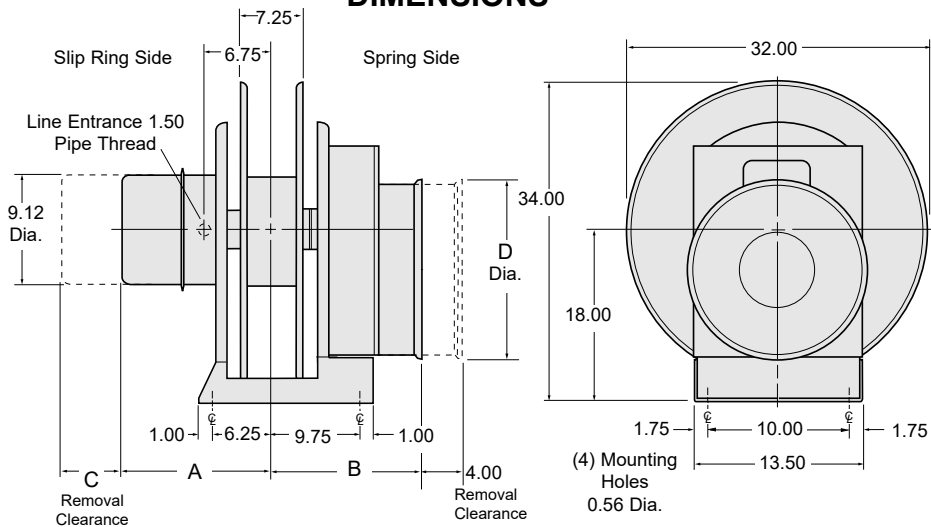


S32

GEARED DRIVE

Dimensional Data & Optional Accessories

DIMENSIONS



Cable payout, as pictured above, denotes standard rotation.

NOTE: Above illustration includes some of the optional accessories described below.

SLIP RING HOUSING DIMENSIONS

Second Series of Digits in Model Number

"A" Dimension in Inches
"C" Dimension in Inches

23	63	212	103	143	203	303
33	83	220	123	163	243	363
43	27	320	312	412		
	37	420				
	47					
16.00	18.50	21.00	23.50	28.50	36.50	
8.50	11.00	13.50	16.00	21.00	29.00	

SPRING MOTOR DIMENSIONS

MODEL NUMBER

"B" Dimension in Inches
"D" Diameter in Inches

Approximate Net Weight of Reel width Spring Motor(s)

S32801	S32802	S32803	S32804	S321001	S321002	S321003	S321004
14.38	17.88	21.38	24.88	15.25	18.75	22.25	25.75
14.38	14.38	14.38	14.38	14.38	14.38	14.38	14.38
225 lbs.	285 lbs.	350 lbs.	407 lbs.	240 lbs.	300 lbs.	370 lbs.	435 lbs.

OPTIONAL ACCESSORIES

Vertical Roller Guide
Part No. 04045401

If Hoop Guides are used, optional Roller Guides may be found on page 16.

