



# **ENGINEERED PRODUCTS GROUP**



- **Spring & Motor Powered Cable and Hose Reels**
  - **C-Rail and I-Beam Festoon Systems**
  - **Steel and Nylon Cable Carriers**
  - **Slip Rings**



**[www.hubbell.com/gleasonreel/en](http://www.hubbell.com/gleasonreel/en)**

# Properly Manage Cables & Hoses in Your Workplace

There are three methods of managing cables and hoses in the workplace: spooling on reels, hanging from festoons or encasing in carriers. The Gleason Engineered Products Group features all three types; custom assembled spring and motor reels, cable carriers and festoon systems in an astounding range of sizes and capacities. Whether you are protecting low-voltage leads and ink tubes in a wide format printer or trying to control hundreds of feet of 3" cable on an off-shore drilling rig, the Engineered Products Group can design and manufacture the very best solution to your needs. With experience dating back to 1911, the name Gleason Reel is synonymous with Effective, Efficient Cable and Hose Management.

## - Hose & Cable Reels -

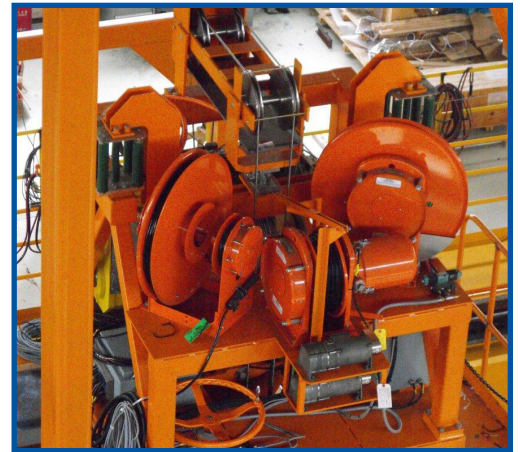
### Cable-Master Cable Reels

Versatility makes this one of the most widely used cable reels in the world. Automatic spring rewind for hand pull or machine mounting. May be mounted base up, down or to wall for vertical or horizontal hose travel. Spool diameters of 14", 16" or 19", handles up to 70' of cable with as many as 12 conductors. *(As with all cable reels, actual maximum capacity varies with cable type and size and type of application.)*



### Hose Reels

Hand pull or machine mount connecting machines to air/water supply. Gleason can supply hose reels in several duty ranges. There is also one series specifically designed for dual hydraulic hose control.



### Series S Reels

Designed primarily for machine mounting, Series S is slightly heavier and available in larger sizes than the Cable-Master (above). Spool diameters to 32" will handle up to 200' cable with 2 to 36 conductors.



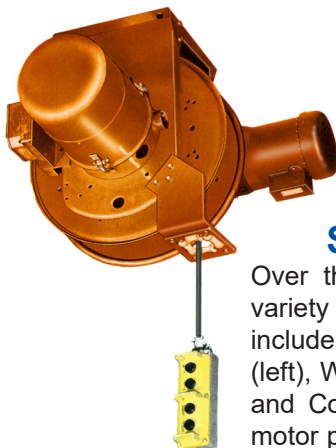
### Series MMD and SM Mill Duty Reels

The heavy duty Series MMD and even more rugged SM are spring powered and specially designed for continuous steel mill and magnet service. Everything about these reels says "long life, even under the most adverse conditions".



### Series SHO and TMR Reels

Spring powered SHO reels (right) and motor powered TMR reels are designed for extra-heavy duty service. Monospiral (shown), level wind and random wrap spools are available.



### Special Application Reels

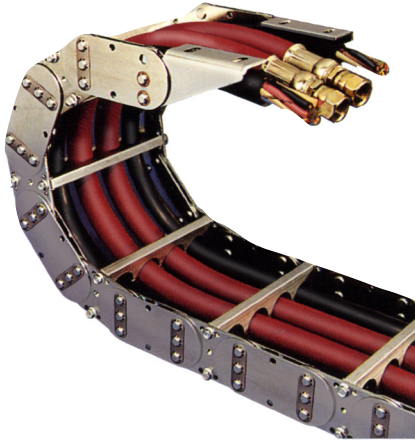
Over the years, Gleason Reel has developed a variety of reels to fit niche applications. These include, among others, a Pendant Control Reel (left), Welding Reels for both Arc and Gas Welding and Combination Reels that are both spring and motor powered.





## - PowerTrak™ Cable Carriers -

Cable carriers organize and protect cords, cables, tubes and hoses on reciprocating machines. Available in four styles in an extremely wide range of sizes, Gleason cable carriers are custom assembled with steel or molded nylon side chains. One piece molded nylon links are also available.



### Series E and EF Steel PowerTrak Cable Carriers

Whether your application calls for the heavy-duty Series E or the mill-duty and super duty Series EF capable of handling “oversized” cables and hoses on off-shore drilling rigs, there is a Gleason steel cable carrier for you. Roller supports and guide trays are also available for extended travel.

### Series GRP PowerTrak Non-metallic Cable Carriers

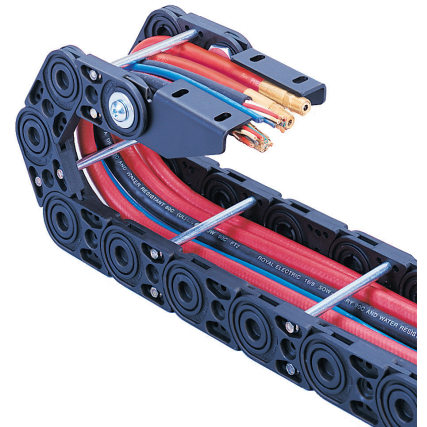
One piece molded fiberglass reinforced links are lightweight and corrosion resistant. Links easily snap together to customize length. Some models flip open to allow easy cable installation. Also available in fully enclosed version.



Steel Carrier in Mill Application

### Series G PowerTrak Cable Carriers

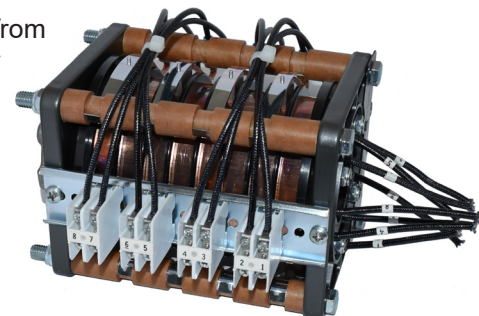
Featuring molded fiberglass reinforced side chains separated by steel rods, extruded aluminum bars or custom milled aluminum bars, the series G PowerTrak cable carrier offers the utmost in versatility. Can be installed to operate vertically or horizontally and will also operate “on edge”.



## - Slip Rings for Rotational Movement -

Gleason slip rings solve a common problem in today's world; transfer of electric current from a stationary member to one that rotates. There is a Gleason slip ring solution for virtually anything that rotates on a fixed axis and requires a flow of electricity.

- **Compact:** 30–75 Amps, 2–20 poles, rated at 600 volts nominal 40 rpm, reversing.
- **Rota-Power:** 35–200 Amps, 2–36 poles, rated at 600 volts, 125 rpm, reversing. Employs unitized, bearing-mounted design for ease of installation and long life.





## - C-Rail, I-Beam and Diamond Rail Festoon Systems -

Festoons are the ideal solution for supplying power to moving equipment when there is sufficient vertical space to allow for looping of the cables and hoses. Models to handle wide range of loads and speeds. Typical trolleys pictured below.



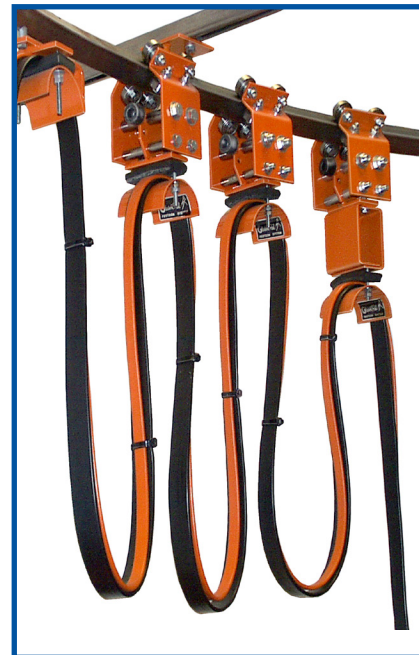
### Track • Master Festoon Systems

Available in three sizes with either clips for round cables/hoses, cable clamps for flat cables, or specially designed clamps for holding a mixed load of hoses, round cables and flat cables. Maximum loads to 125 lbs per trolley.



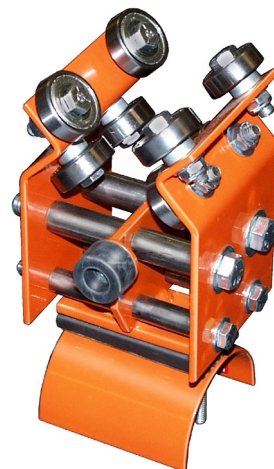
### Beam • Master Festoon Systems

Wide variety of trolley sizes and configurations designed for speeds to 650 fpm with loads to 1300 lbs. per trolley. Widely used on container cranes, machine tools, material handling equipment, steel mill cranes, etc.



### Diamond Rail Festoon Systems

Unique heavy duty festoon system follows your machinery or conveyor line, even around curves. Supplies electric power or compressed air where needed, when needed. Curved rail sections available with 36" to 340" radii. Straight sections also available. Maximum load 50 lbs. per trolley.



We offer a variety of mobile electrification products to handle your application. Consult factory or visit our web site for more information on our products.



**Gleason Reel Corp.**  
600 South Clark St.  
Mayville, WI 53050  
PH: 920-387-4120  
[www.hubbell.com/gleasonreel/en](http://www.hubbell.com/gleasonreel/en)