



Adjustable Beam Trolleys

Our adjustable beam trolleys are designed with your applications in mind. Economical, durable and expandable, our festoon cable trolley runs on various beam sizes (See below for listing; consult factory for additional size requirements). These trolleys roll on 4 steel ball bearing wheels. This provides a rolling capacity of 154 lbs. Multiple cable saddle configurations provide a variety of cable carrying options for single or dual flat cable or round cable.

Benefits of Construction

- Steel construction with zinc finish
- Wheels are manufactured with threaded axels, bolted (not riveted) onto the chassis for easy replacement if required
- Steel chassis expands for a range of I-Beam sizes
 - S-Beam: S3 x 5.7, S4 x 7.7, S6 x 12.5
 - W-Beam: W6 x 9, W8 x 28. Fits W-Beam with a flange ranging in size from 3.94-6.54". Consult factory for other beam sizes



S-Beam Intermediate or Tow Trolley

Flat: F-IT-S3/5.7

Round: F-IT-S3/5.7R2 - 0.60"-0.94" dia.

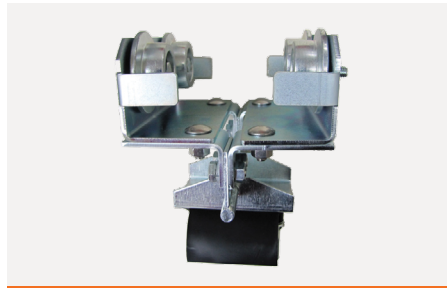
F-IT-S3/5.7R3 - 0.94"-1.25" dia.



Intermediate or Tow Trolley with Dual Cable Saddles

S-Beam Flat: F-IT-S3/5.7D

W-Beam Flat: F-IT-WD



W-Beam Intermediate or Tow Trolley

Flat: F-IT-W-F

Round: F-IT-W-R1 - 0.31"-0.59" dia.

F-IT-W-R2 - 0.60"-0.94" dia.



Control Box Trolley for Push Button Pendant Connection

Control box not included

S-Beam: F-ITB-S3/5.7

W-Beam: F-ITB-W



End Clamps with Choice of Trolley

Flat: F-ICE - single saddle 3" dia.

F-ICE-D - dual saddle 3" dia.

Round: F-ICE/R2 - 0.60"-0.94" dia.

F-ICE/R3 - 0.94"-1.25" dia.



Balancer Trolley for Hanging Tool Balancer

S-Beam: F-IT-S3/5.7-TB (Shown above)

W-Beam: F-IT-W-TB

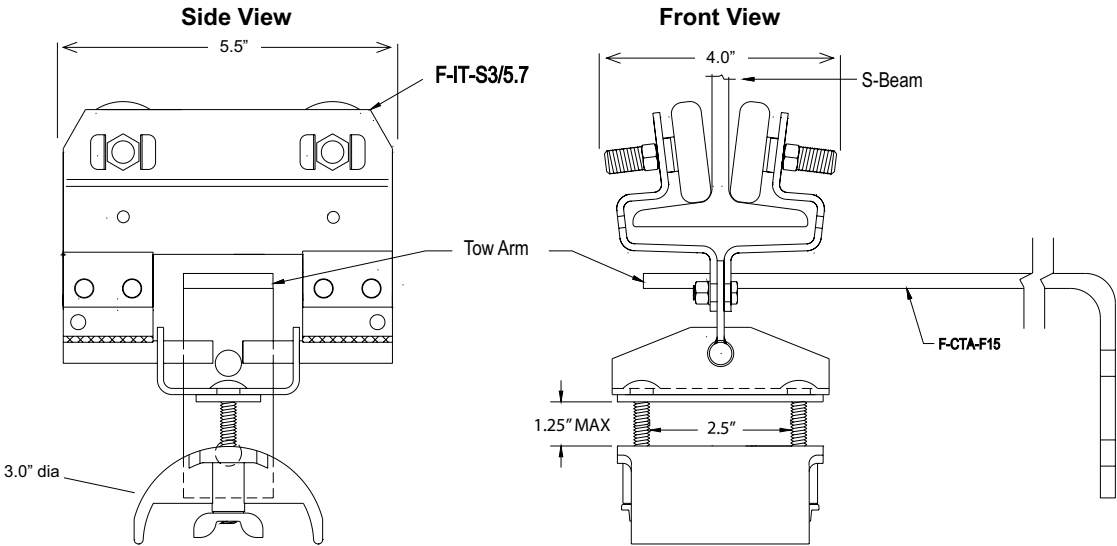


End Stop Clamp

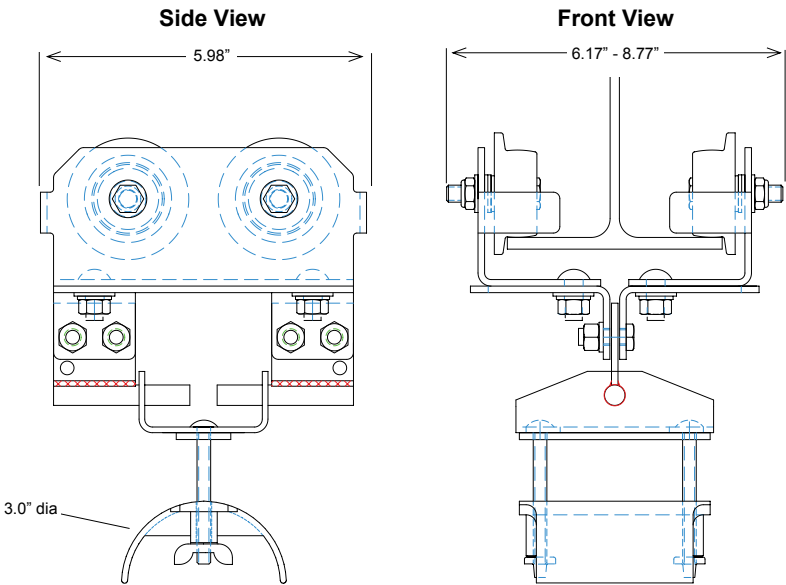
Accessory, F-IES

Drawings and Dimensions

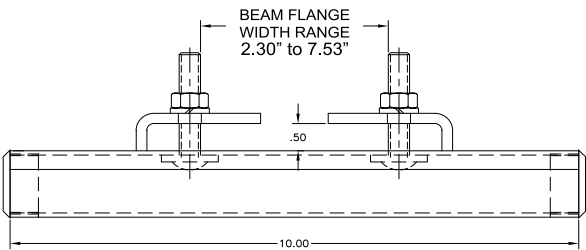
S-Beam Trolleys



W-Beam Trolleys



End Stop Clamp



Tow Arms

