



PRODUCT OVERVIEW

RED ALERT[®] Telephones



A leading manufacturer in the emergency communications industry for 80 years

Red Alert® telephones are designed for maximum environmental sustainability, high audio quality, and unparalleled monitoring capability.



Greater
Features



Value



Reliability



The Industry Standard

RED ALERT® telephones are hands-free, two-way communications that can tell you its location, report call activity, activate up to two peripheral devices, and let you know when it is experiencing problems.

Features

- Available in Analog, VoIP, or WiFi
- Standard or SMART (Self-Monitoring and Reporting Technology) Operation (analog models)
- Line-powered (analog)
- PoE or external supply (VoIP/WiFi)
- Embedded web browser, SIP compatible (VoIP/WiFi)
- ADA Compliant with braille “Help” label, and visual “Call Received When Lit” LED
- Large “palm” emergency pushbutton
- Enhanced audio and speaker circuits
- Microphone shroud prevents water ingress
- Vertical speaker grill design promotes water egress
- Extreme cold weather option to -40° C (120 V ac required), providing non-moving pushbuttons and power supply (analog only)
- Two programmable control outputs (gate, door, alarm, etc.)
- Four programmable inputs (VoIP/WiFi only)
- NEMA 3R weatherproof rating
- CSA certified, FCC registered and IC certified
- Safety corner design (flush-mount)

Telephone Management Application (TMA) Software

When connected to our TMA (Telephone Management Application) software, each RED ALERT telephone will be automatically recognized and logged in for SMART operation. If there is no TMA connected in the system, standard telephone operation will occur. Using TMA, each RED ALERT telephone will be polled on a scheduled basis to report:

- Line Integrity
- Microprocessor Health
- Stuck Buttons
- Microphone Fault
- Speaker Fault
- Line Interrupt (Power Failure)
- System Registration (VoIP/WiFi)

This will lower system test and maintenance time while greatly decreasing liability issues associated with undetected, faulty equipment.

Other systems monitor only the telephone line (cable). RED ALERT telephones are monitored directly for faults, in addition to the line.

Options

Extreme Cold Weather

RED ALERT telephones are designed to operate to -20°C. For more extreme low temperatures, an Extreme Cold Weather option is available for analog models only. This option provides a plug-in power supply (120 V ac required) to activate an internal “heater” circuit and piezo (non-moving) EMERGENCY and CALL (if applicable) pushbuttons. This design prevents melting snow or ice from freezing the push button activation and allows operation to -40°C.

Output Control

Each emergency telephone is capable of providing two (2) separate isolated, solid-state switch outputs, each rated at 125 mA. Each output can be activated when the telephone is in use (strobe activation) or via remote dial-up (DTMF) command activation to control a peripheral device such as a gate or door latch, light, alarm, etc.

Note: VoIP/WiFi Telephones’ outputs are rated at 8A.

Retrofit Flush-Mount Telephones

These phones provide the same functionality and durability as other GAI-Tronics telephones but are designed to be mounted into existing proprietary non-GAI-Tronics enclosures and towers (these units are designed for 6-hole mounting).

Emergency and Public Access Telephones



393 and 393AL Series

Housed in a weatherproof, safety yellow, non-metallic (393-00x) or cast aluminum (393AL-00x) enclosure, designed for surface-mounting; includes EMERGENCY push button.

Standard models: [393-001](#) and [393AL-001](#)



394AL Series

Housed in a weatherproof, safety yellow cast aluminum enclosure, designed for surface-mounting; includes 12-button Braille keypad, EMERGENCY push button, and CALL (off-hook) button.

Standard model: [394AL-001](#)



397 Series

Flush-mount telephone with a heavy-gauge, brushed stainless steel front panel; includes EMERGENCY pushbutton.

Standard model: [397-001](#)

Catalog Number	Model Options
393-003 / 393AL-003	Extreme Cold Weather Option to -40°C (120 V ac required)
393-710	VoIP Telephone, Aluminum, Single-button (HELP)
393AL-710	VoIP Telephone, Aluminum, Single-button (HELP)
393-810A	WiFi Telephone, Non-metallic, Single-button (HELP)
393AL-810A	WiFi Telephone, Aluminum, Single-button (HELP)
394AL-003	Extreme Cold Weather Option to -40°C (120 V ac required)
394AL-712	VoIP Telephone, HELP Button with CALL Button and Keypad
394AL-812A	WiFi Telephone, HELP Button with CALL Button and Keypad
397-003	Extreme Cold Weather Option to -40°C (120 V ac required)
397-710	VoIP Telephone, Single-button (HELP)
397-810A	WiFi Telephone, Single-button (HELP)
397-900V	LTE (compatible with Verizon) Telephone, Single Button (HELP)
397-900A	LTE (compatible with AT&T) Telephone, Single Button (HELP)

Emergency and Public Access Telephones



398 Series

Emergency Telephone, Keypad, Flush-mount with a heavy gauge, brushed stainless steel front panel; includes 12-button Braille keypad, EMERGENCY push button, and CALL (off-hook) button.

Standard model: 398-001



396 Series

Emergency Telephone, Two-button, Flush-mount with a heavy gauge, brushed stainless steel front panel; includes EMERGENCY push button and ASSISTANCE (non-emergency) pushbutton.

Standard model: 396-001



392 Series

Access Telephone, Flush-mount with a heavy gauge, brushed stainless steel front panel; includes 12-button Braille keypad and CALL (off-hook) button.

Standard model: 392-001*

Catalog Number	Model Options
398-003	Extreme Cold Weather Option to -40°C (120 V ac required)
398-712	VoIP Telephone, HELP Button w/ CALL Button & Keypad
398-812A	WiFi Telephone, HELP Button w/ CALL Button & Keypad
396-003	Extreme Cold Weather Option to -40°C (120 V ac Required)
397-711 <i>Standard features as 396-001</i>	VoIP Telephone, Two-button (HELP, ASSISTANCE)
397-811A <i>Standard features as 396-001</i>	WiFi Telephone, Two-button (HELP, ASSISTANCE)
398-711* <i>Standard features as 392-001</i>	VoIP Telephone with CALL Button and Keypad
398-811A* <i>Standard features as 392-001</i>	WiFi Telephone with CALL Button and Keypad

*Note: Model 392-001, Model 398-711 and Model 398-811A telephones are not intended for use as Emergency telephones.

Auto-dial, Non-Emergency Telephones

GAI-TRONICS' RED ALERT® Auto-dial Telephones are designed to provide clear and reliable communications in almost any environment.



393 Auto-dial Series

Single button, housed in a weatherproof, safety yellow, non-metallic enclosure; designed for surface mounting; includes CALL pushbutton.

Standard model: [393-001AD](#)



393AL Auto-dial Series

Single button housed in a weatherproof, safety yellow, aluminum enclosure designed for surface mounting; includes CALL pushbutton.

Standard model: [393AL-001AD](#)



397 Auto-dial Series

Single button, Flush-mount telephone with a heavy gauge brushed stainless steel front panel; includes CALL pushbutton.

Standard model: [397-001AD](#)

Catalog Number	Model Options
393-003AD	Extreme Cold Weather Option to -40°C (120 V ac required)
393AL-003AD	Extreme Cold Weather Option to -40°C (120 V ac required)
397-001AD	Extreme Cold Weather Option to -40°C (120 V ac required)

Compact Series Flush-mount Telephones

The Compact Series telephones are designed for installation in areas with restricted available space. Standard RED ALERT® telephones have a panel measuring 10" W x 12"H, compared to the compact size of 6.5"W x 8.0"H. Features are identical.



Model 392-001FS

Access Telephone, compact, keypad, flush-mount, with a heavy gauge, brushed stainless steel front panel; includes 12-button Braille keypad and CALL (off-hook) piezo pushbutton.



Model 397-001FS

Emergency Telephone, compact, single button, flush-mount, analog with a heavy-gauge, brushed stainless steel front panel; includes EMERGENCY piezo pushbutton.



Model 397-710FS

Emergency VoIP Telephone, compact single button, flush-mount with a heavy-gauge, brushed stainless steel front panel; includes EMERGENCY piezo pushbutton.



Model 398-711FS

Auto-dial Telephones, compact, single button, flush-mount, analog with a heavy gauge brushed stainless steel front panel; includes CALL piezo pushbutton.



Model 238-001FS

Stainless Steel wall-mount enclosure. Provides surface-mounting for Compact Series telephones.

Retrofit Flush-mount Telephones

These emergency telephones are designed to mount into existing, non-GAI-Tronics enclosures/towers and are intended to replace flush-mount telephones manufactured by Ramtel, Code Blue, and Talk-A-Phone (6-hole mounting pattern). RED ALERT® retrofits provide the same features, functionality, and durability as other RED ALERT Telephones.



397 Retrofit Series - Code Blue

Emergency Telephone, retrofit, single button, flush-mount with a heavy gauge, brushed stainless steel front panel; includes EMERGENCY pushbutton.

Standard model: [397-001CB](#)



397 Retrofit Series - Ramtel

Emergency Telephone, retrofit, single button, flush-mount with a heavy gauge, brushed stainless steel front panel; includes EMERGENCY pushbutton.

Standard model: [397-001RT](#)



397 Retrofit Series - Talk-A-Phone

Emergency Telephone, retrofit, single button, flush-mount with a heavy gauge, brushed stainless steel front panel; includes EMERGENCY pushbutton.

Standard model: [397-001TP](#)

Catalog Number	Model Options
397-003CB	Extreme Cold Weather Option to -40°C (120 V ac required)
397-003RT	Extreme Cold Weather Option to -40°C (120 V ac required)
397-003TP	Extreme Cold Weather Option to -40°C (120 V ac required)
397-710CB	VoIP Telephone, Single-button (HELP)
397-710RT	VoIP Telephone, Single-button (HELP)
397-710TP	VoIP Telephone, Single-button (HELP)
397-900ACB	LTE Retrofit Series - Code Blue (compatible with AT&T) Telephone, Single Button (HELP)
397-900VCB	LTE Retrofit Series - Code Blue (compatible with Verizon) Telephone, Single Button (HELP)

Ramtel is a registered trademark of Ramtel Corporation.

Code Blue is a registered trademark of Code Blue Corporation.

Talk-A-Phone is a registered trademark of Talk-A-Phone Co.

Retrofit Flush-mount Telephones

These emergency telephones are designed to mount into existing, non-GAI-Tronics enclosures/towers and are intended to replace flush-mount telephones manufactured by Ramtel, Code Blue, and Talk-A-Phone (6-hole mounting pattern). RED ALERT® retrofits provide the same features, functionality, and durability as other RED ALERT Telephones.



398 Retrofit Series - Code Blue

Emergency Telephone, retrofit, with a heavy gauge, brushed stainless steel front panel; includes, 12-button Braille keypad, EMERGENCY pushbutton, and CALL (off-hook) pushbutton.

Standard model: [398-001CB](#)



398 Retrofit Series - Ramtel

Emergency Telephone, retrofit, with a heavy gauge, brushed stainless steel front panel; includes, 12-button Braille keypad, EMERGENCY pushbutton, and CALL (off-hook) pushbutton.

Standard model: [398-001RT](#)



398 Retrofit Series - Talk-A-Phone

Emergency Telephone, retrofit, with a heavy gauge, brushed stainless steel front panel; includes, 12-button Braille keypad, EMERGENCY pushbutton, and CALL (off-hook) pushbutton.

Standard model: [398-001TP](#)

Catalog Number	Model Options
398-003CB	Extreme Cold Weather Option to -40°C (120 V ac required)
398-712CB	VoIP Telephone, HELP Button with CALL Button & Keypad
398-003RT	Extreme Cold Weather Option to -40°C (120 V ac required)
398-712RT	VoIP Telephone, HELP Button with CALL Button & Keypad
398-003TP	Extreme Cold Weather Option to -40°C (120 V ac required)
398-712TP	VoIP Telephone, HELP Button with CALL Button & Keypad

Ramtel is a registered trademark of Ramtel Corporation.

Code Blue is a registered trademark of Code Blue Corporation.

Talk-A-Phone is a registered trademark of Talk-A-Phone Co.

Towers

Free-standing Tower

Accommodates RED ALERT® flush-mount telephones and the 540-001 strobe

Features

- Powder coat epoxy finish
- Emergency graphics
- UL/cUL Listed for outdoor installations
- ADA Compliant (telephone mounting height)
- Custom colors and graphics available
- 10 W x 10 D x 114 H inches, 3/16-inch steel
- Approximate shipping weight 225 lbs.
- Includes panel light, protective lens and mounting kit
- Power rating
 - LED Phone Panel Light; 0.2 amps @ 120 V ac
 - LED Strobe; 0.39 amp @ 120 V ac
- Wind Speed Rated at 140 MPH*

Options

- Camera mast
- Solar
- Loudspeaker broadcast
- Custom designs.

RED ALERT emergency telephone and strobe are ordered separately.




Model 234 does not accommodate RED ALERT retrofit telephones.

**Ref: AASHTO LTS6 Risk Category II; International Building Code*











Model 234

Standard Colors

-  234 Architectural Bronze w/ White Graphics
-  234-045 Safety Blue (RAL5015) w/ White Graphics
-  234-118 Safety Red (RAL3020) w/ White Graphics

Optional Colors

-  234-062 Safety Yellow (RAL1018) w/ Black Graphics
-  234-054 Winter White (RAL9010) w/ Black Graphics
-  234-003 Black (RAL9005) w/ White Graphics
-  234-235 Forest Green (RAL6029) w/ White Graphics
-  234-048 Deep Blue (RAL5005) w/ White Graphics
-  234-234 Grey (RAL7040) w/ Black Graphics
-  234-133 Burgundy (RAL3011) w/ White Graphics
-  234-164 Orange (RAL2008) w/ Black Graphics

Please Note: The color samples provided are a representation only and may differ from actual paint supplied.

Wall-mount Communication Station

Elite Wall-mount Communication Station

Accommodates RED ALERT® flush-mount telephones and the 540-001 strobe

Features

- UL/cUL Listed for indoor installations
- Bright safety yellow, powder coat epoxy finish
- Custom colors and graphics available
- Emergency graphics
- ADA Compliant (telephone mounting height)
- 10 W x 9.5 D x 40.5 H (inches), 1/8-inch aluminum construction
- Approximate shipping weight 50 lbs.
- Includes Panel Light and Protective Safety Glass (Strobe Protection)
- Power rating
 - LED Phone Panel Light; 0.2 amps @ 120 V ac
 - LED Strobe; 0.39 amp @ 120 V ac

RED ALERT emergency telephone and strobe are ordered separately.

Model 234WM-202 does not accommodate RED ALERT retrofit telephones.



Model 234WM-202

Economy Wall-mount Communication Stations

Budget-friendly, aesthetically-appealing emergency communications package for indoor or outdoor use.

Model 240WM-00x

- Aluminum construction resists corrosion
- Durable powder-coated epoxy finish
- Standard colors are yellow or silver
- Constant-on, LED blue strobe (240 fpm when call is active)
- LED panel light
- Accommodates RED ALERT® flush-mount analog and VoIP telephones (purchased separately)
- Stainless steel, security hardware
- Easy installation
- UL 1598 and CSA C22.2 No. 250.0 luminaires standard
- Indoor/Outdoor rated
- 20 V ac or 12-24 V dc input required for strobe and panel light operation
- Custom colors and graphics available



Catalog Number	Description
240WM-001	Yellow Wall-mount Communication Station with LED Strobe and Panel Light, 120 V ac
240WM-002	Silver Wall-mount Communication Station with LED Strobe and Panel Light, 120 V ac
240WM-001DC	Yellow Wall-mount Communication Station with LED Strobe and Panel Light, 12-24 V dc
240WM-002DC	Silver Wall-mount Communication Station with LED Strobe and Panel Light, 12-24 V dc e

Model 241WM-00x

- Aluminum construction resists corrosion
- Durable powder-coated epoxy finish
- Standard colors are yellow or silver
- Constant-on, LED blue strobe (240 fpm when call is active)
- Accommodates RED ALERT flush-mount analog and VoIP telephones (purchased separately)
- Stainless steel, security hardware
- Easy installation
- UL 1598 and CSA C22.2 No. 250.0 luminaires standard
- Indoor/Outdoor rated
- 120 V ac or 12-24 V dc input required for strobe
- Custom colors and graphics available



Catalog Number	Description
241WM-001	Yellow Wall-mount Com. Station with LED Strobe, 120 V ac
241WM-002	Silver Wall-mount Com. Station with LED Strobe, 120 V ac
241WM-001DC	Yellow Wall-mount Com. Station with LED Strobe, 12-24 V dc
241WM-002DC	Silver Wall-mount Com. Station with LED Strobe, 12-24 V dc

Slim Wall-mount Communication Stations

Accommodates RED ALERT® flush-mount telephones

Model 239WM-001 (Analog & VoIP)

- True ADA Compliance for corridor installation (less than 4 inches depth, including the hands-free telephone)
- Weatherproof Rating, Type 3R
- Integral constant-on, blue strobe with flash during telephone activation and protective guard
- Type 304 stainless steel construction (brushed and passivated)
- Measures 26.54 H x 10.18 W x 3.12 (inches), including strobe guard
- Includes blank upper panel for customer use (signs, labels, directions, card access, etc.)
- Security panel screws (security tip included)
- 120 V ac input (24 V dc internal power supply)
- UL/CSA 60950 Certified



Model 239WM-001

Model 239WM-002 (WiFi)

- True ADA Compliance for corridor Installation (less than 4 inches depth, including the hands-free telephone)
- Weatherproof Rating, Type 3R
- Integral constant-on, blue strobe with flash during telephone activation and protective guard
- Integral low-profile, WiFi antenna
- Type 304 stainless steel construction (brushed and passivated)
- Measures 26.54 H x 10.18 W x 3.12 (inches), including strobe guard
- Includes blank upper panel for Customer use (signs, labels, directions, card access, etc.)
- Security panel screws (security tip included)
- 120 V ac input (24 V dc internal power supply)
- UL/CSA 60950 Certified



Model 239WM-002

Accessories



Model 236 Series

Surface-mount enclosures with hood, provides surface-mounting for standard RED ALERT® flush-mount telephones



Model 238-001

Stainless Steel Wall-mount Enclosure; provides surface-mounting for standard RED ALERT flush-mount telephones



Model 238-001FS

Stainless Steel Wall-mount Enclosure; provides surface-mounting for RED ALERT 'FS' series compact flush-mount telephones



Strobes

Constant-on/Flash LED Strobe; Weatherproof Rated, UL/cUL Listed, 240 fpm, rated LED Life: up to 100,000 hours, 7.00"H x 6.50"W



Pole and Strobe Mounting Kits

Mounting kits available for surface and wall-mount, including brackets



Tamperproof Screwdriver

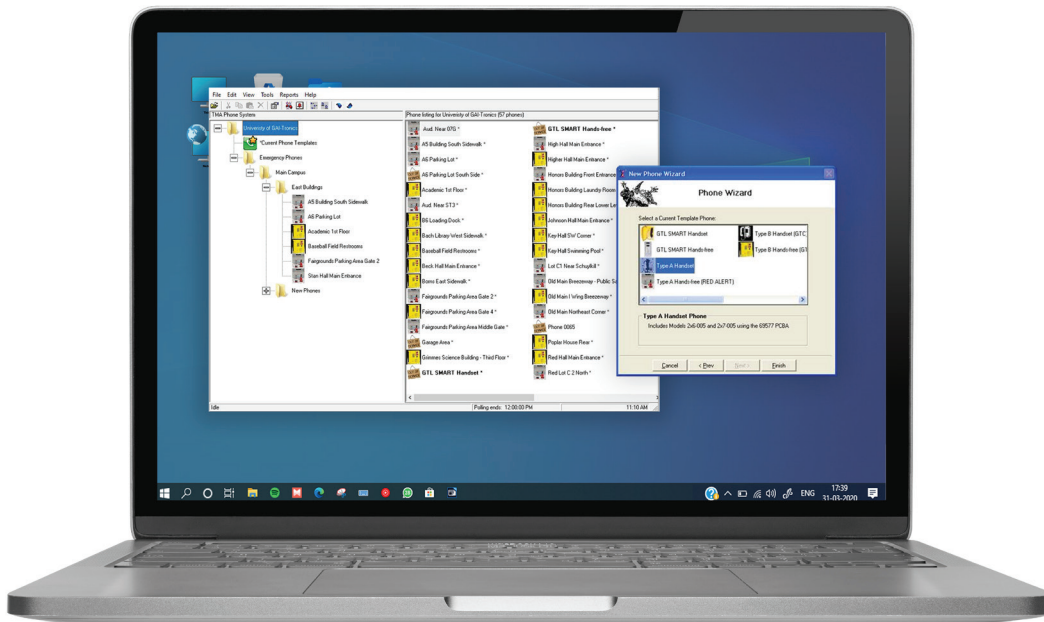
T-25 Size Torx, required for installation of RED ALERT and rugged phones using T-25T Torx screw

Mounting Kits and Tools

Catalog Number	Description
236-001YL	Yellow, compatible with the Model 231-001 Pole-Mounting Kit
236-001BK	Black, compatible with the Model 231-001 Pole-Mounting Kit
236-001RD	Red, compatible with the Model 231-001 Pole-Mounting Kit
540-001	120 V ac , Constant-on/Flash LED Strobe; Weatherproof Rated, UL/cUL Listed, 240 fpm. Rated LED Life: up to 100,000 hours, 7.00"H x 6.50"W
541-001	12-24 V dc, Constant-on/Flash LED Strobe; Weatherproof Rated, UL/cUL Listed, 240 fpm. Rated LED Life: up to 100,000 hours, 7.00"H x 6.50"W
231-002	Pole Mounting Kit for Wall-mount Enclosures and Telephones
231-002FS	Pole Mounting Kit for Compact Surface-mount Enclosures
231-003	240WM/241WM Series Communication Station Pole Mounting Kit
4115A	4115A Mounting Kit for Strobes
233-001	Tamperproof Screwdriver (required for installation)

Telephone Management Application Software (TMA)

Save time and money with TMA—a maintenance data-collection and reporting tool that allows users to view and report the health of RED ALERT® telephones.



Compatibility

The software application is compatible with Windows OS and is intended for use on a dedicated PC.

The graphical user interface provides a visual indication of each telephone's status and activity.



Programmable

An audible alert or an email will be generated if a fault condition exists.

Many features of TMA are completely user-configurable to provide maximum flexibility.



Analog Phones

TMA can support up to eight (8) line inputs, simultaneously polling and collecting data can take upwards to 90 seconds.

A transceiver is required for analog phones



VoIP Phones

TMA does not monitor these phones simultaneously but the speed at which data is collected is 20 seconds per telephone, approximately four (4) times faster than an analog system.

TELEPHONE MANAGEMENT APPLICATION

Initial programming of unit-specific data is easily accomplished and just as easy to make changes, additions, and deletions. Figure 1 identifies the programming screen where the desired polling functions are set-up.

TMA is designed to monitor individual analog telephones, each on a dedicated analog telephone line. This allows the polling process to take place, with each telephone automatically answering when accessed for data retrieval. If two telephones are required to share a single analog line, each unit will be required to “call in” rather than being polled (programmable). Successfully sharing a line depends on the quality of the line. Insufficient line current with more than one telephone going off hook simultaneously can cause a call to be dropped completely. This is obviously not an issue with VoIP telephones since they all share the same Ethernet backbone.

Figure 2 provides a visual indication of the system “tree”, listing all components as a specific icon with their associated location. Various reports, such as a Basic Summary Report (directly above the system tree screenshot), are available to provide status and history information as required by the operation. In addition to telephone health information, TMA can provide call activity reports

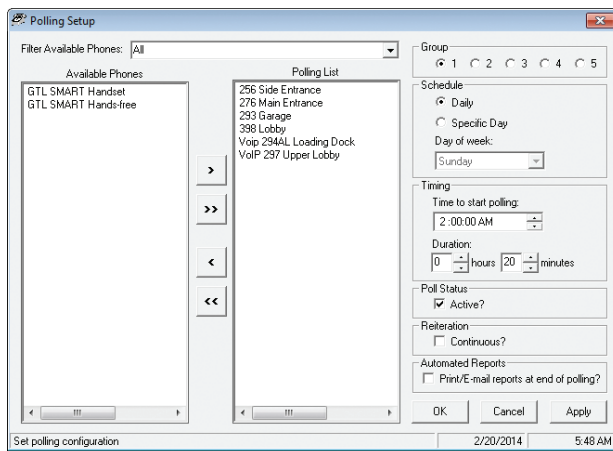


Figure 1 - Polling Setup

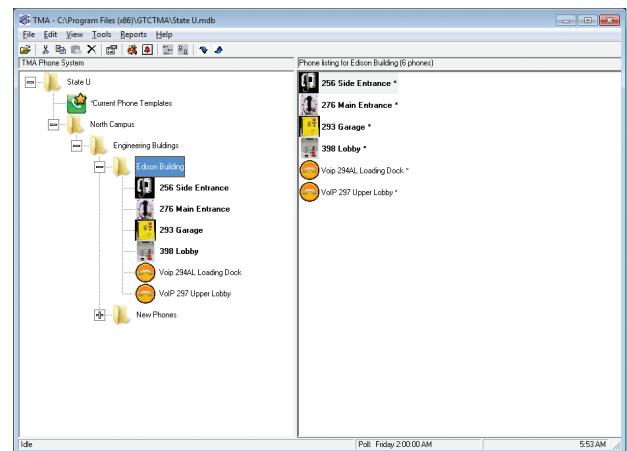


Figure 2- Polling Tree

Ordering Information



12509-042

TMA Package (includes transceiver, security key, interface cables, and software flash drive); supports both analog and VoIP telephones



12509-043

TMA Expansion Kit (includes transceiver, interface cables, and software flash drive); required for adding an additional analog telephone line



12509-044

TMA Package for VoIP only (includes security key and software flash drive)

Custom Products

GAI-TRONICS takes great pride in its ability to meet the functional communication needs and desires of our customers. A large portion of our business relates to custom products designed outside of our normal product parameters. This could be as simple as a custom logo, labeling, or color to as complex as a one-off telephone designed to meet a customer specification.

Telephones

RED ALERT® Telephones can be custom-produced for non-standard functionality or interfaced to peripheral circuitry. Examples include:

- Cellular interfacing
- Custom packaging
- Custom functionality

Towers

RED ALERT towers and wall-mount communication stations can be provided in a number of custom configurations.

These include but are not limited to:

- Solar Power
- Cellular Interface (with or without Solar Power)
- Lighting Power
- Surveillance Camera Support

Contact the factory at 1-800-492-1212, prompt no. 1, or customerservice@gai-tronics.com for additional information about our custom product capabilities.

Services

Selecting RED ALERT Emergency Telephones with TMA maintenance software is obviously a smart choice. To make this choice even smarter, consider allowing GAI-TRONICS to remotely program, monitor, and/or maintain your telephone system. In addition to providing normal business hour telephone support at no charge, the following additional charge services are available:

Remote Programming Service

Factory technicians remotely perform all the programming requirements to set up your RED ALERT telephone network. A digital copy of the newly created database will be provided upon completion of the programming, for installation on the local Personal Computer.

Remote Monitor

The RED ALERT system is remotely monitored by GAI-TRONICS to provide reporting of failed units, monthly maintenance activity, and call log activity. Customer will provide replacement telephones from local inventory and labor.

Contact our Service Department at 1-800-492-1212 or service@gai-tronics.com for additional information.



GAI-TRONICS aggressively applies leading edge technology to address the world's most challenging communication needs of industrial markets.

GET IN TOUCH:



GTCsales@gai-tronics.com



(800) 492-1212



www.hubbell.com/gai-tronics



GAI-TRONICS® Headquarters USA
3030 Kutztown Road
Reading, PA 19605

