



MEDIMODE™

Multi-Function Recessed
Patient Room Light

MEDIMODE

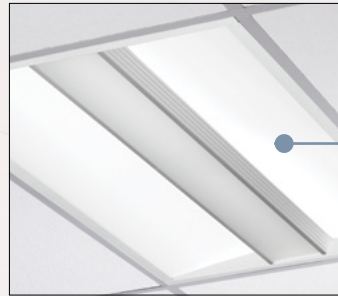
PRODUCT OVERVIEW

The MediMode™ Multi-Function Recessed Patient Room Light provides the primary lighting needs for the patient environment. The ambient/reading compartments provide low-glare even illumination while the dedicated exam compartment delivers 100+ fc for critical examination functions. A full lensed door option is available for simplified cleaning.

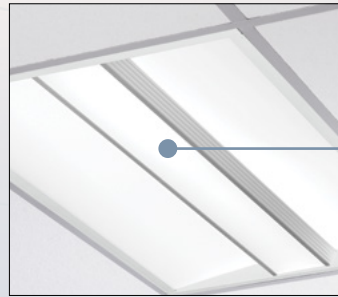
APPLICATIONS

- PATIENT ROOMS
- PRE- AND POST-OP AREAS
- PHYSICIAN'S OFFICES
- EMERGENCY ROOM
EXAMINATION

KEY FEATURES



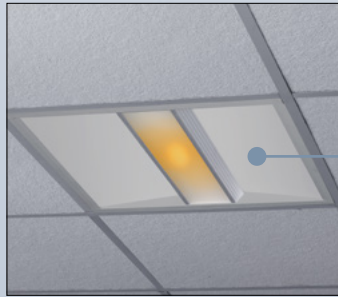
Lensed, indirect ambient/reading compartments enhance patients' visual comfort.



Examination function utilizes both indirect and direct lighting compartments to meet recommended guidelines for examination illumination at the bed surface.



An optional full-lensed door simplifies cleaning and provides an IP65 rating.



Integral night light amber (590nm) or white (3000K)



Removable optical tray with quick servicing of electrical components.

A tool-less optical tray and quick-change gear trays allow for simple installation and servicing.



Standard soft white antimicrobial powder coat paint finish.

Optical compartment securely captures all lenses.



2x4 and 2x2 models for both grid and flange mounting.

Available in a variety of color temperatures: 3000K, 3500K, 4000K and 5000K with a standard CRI of >90 (R9 = 69-71).

ORDERING GUIDE

EXAMPLE: MDM24-9-40-G-120-HLD-NA-LVCD5M2

MDM		9								OPTIONS	
MODEL	SIZE	CRI	COLOR TEMP	CEILING TYPE	VOLTAGE						
MDM MediMode Patient Room Luminaire	22 2'x2' (nom.)	91 90 CRI	30 3000K	G Grid Mount	U Universal (120-277V)						
	24 2'x4' (nom.)	8 80 CRI	35 3500K	F Flange Mount	120 120V						
			40 4000K		277 277V						
			50 5000K								

ACCESSORIES

- FK22H** Framing kit for field conversion of 2x4 Grid (G) fixture to Flange (F) fixture. This accessory is not required if Flange (F) fixture is ordered.
- FK24H** Framing kit for field conversion of 2x4 Grid (G) fixture to Flange (F) fixture. This accessory is not required if Flange (F) fixture is ordered.

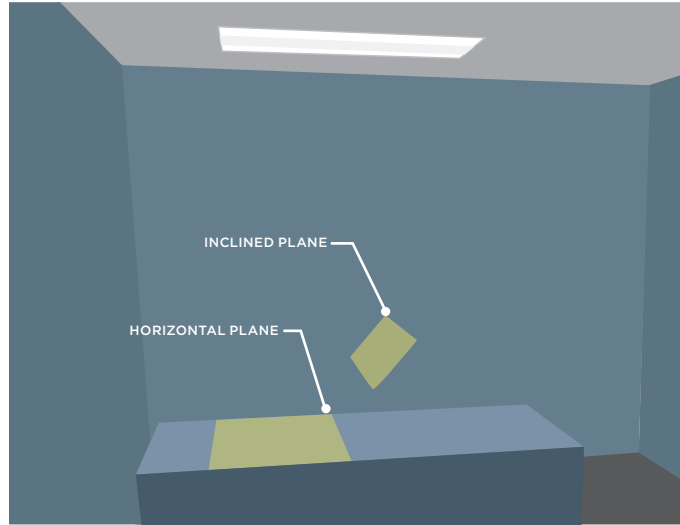
POWERHUBB[®] PoE LIGHTING & CONTROL

MediMode is also available for Power over Ethernet projects. Hubbell Control Solutions' PowerHUBB[™] is an enterprise level Power-Over-Ethernet (PoE) lighting and control platform that seamlessly integrates luminaires, sensors, human interfaces and software for a scalable intelligent building control solution. Refer to MediMode PowerHUBB (MDMPH) or www.hubbellcontrolsolutions.com for further information on control options.

1 90 CRI unless specified otherwise.
2 IP65 rated.
3 Must specify voltage.
4 Not available in 2x2 model with any LVC option.

- HLD A²** Hinged lens door with clear acrylic lens (nom. 0.125" thickness)
- HLD P²** Hinged lens door with clear polycarbonate lens (nom. 0.125" thickness)
- SLDA²** Screwed-in lens door with clear acrylic lens (nom. 0.125" thickness)
- SLDP²** Screwed-in lens door with clear polycarbonate lens (nom. 0.125" thickness)
- NA** Night Light Amber (590nm), (120V only)
- NW** Night Light White (3000K), (120V only)
- LVC1³** Low Voltage Controller for individual control of ambient/reading mode.
- LVC2³** Low Voltage Controller for individual control of ambient/reading mode and night light mode.
- LVCD** Low Voltage Controller with dimming (0-10V) for ambient/reading function. Refer to LVC Selection Chart on product spec sheet to complete option code. (Ex. LVCD5M1)
- ELL14⁴** Emergency battery pack
- GMF** Slow blow fuse
- RIF** Radio interference filter
- TR** Tamper-resistant hardware (center-pin Torx)

EXAMINATION APPLICATION STUDY



48	50	51	51	50	48
47	49	50	50	49	47
46	48	49	49	48	46
44	46	47	47	46	44
42	44	45	45	44	42

READING ILLUMINATION
HORIZONTAL PLANE (2'x3')
Avg: 47 fc

60	64	67	67	64	60
55	59	61	61	59	55
51	54	56	56	54	50

READING ILLUMINATION
INCLINED PLANE (1'x3')
AVG: 58 fc

15	17	19	21	4.3	4.4	21	19	17	15
17	19	21	23	2.1	4.0	23	21	19	16
18	20	23	25	2.2	4.1	25	23	20	18
18	21	24	26	2.2	4.1	26	24	21	18
18	21	24	26	2.2	4.0	26	24	21	18
17	20	23	25	2.2	3.8	25	23	20	18
16	19	21	23	2.1	3.7	23	21	19	17
15	17	19	21	4.3	4.3	21	19	17	15
14	16	17	19	11	11	11	11	19	17
12	14	15	16	17	18	18	17	16	15
11	12	13	14	15	15	15	14	13	12
9.4	11	12	12	13	13	13	12	12	11

AMBIENT ILLUMINATION
AVG: 16 fc

Room Size 12' x 12'
Ceiling Height 8'-6"
Room Reflectances 80/50/20
Luminaire Height Centered 6'-2" AFF
Bed Height 2'-6"

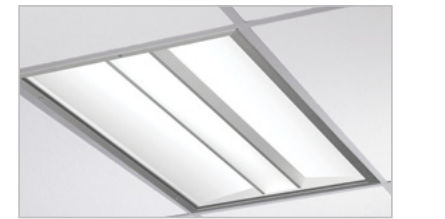
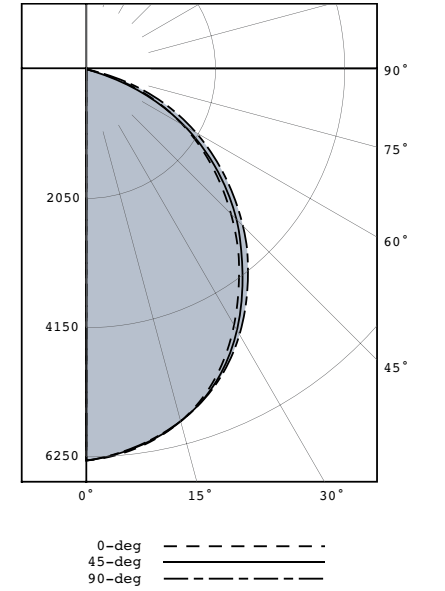
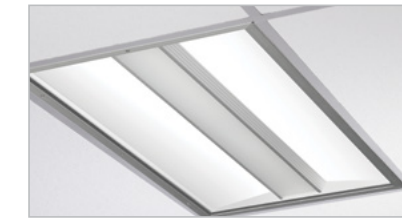
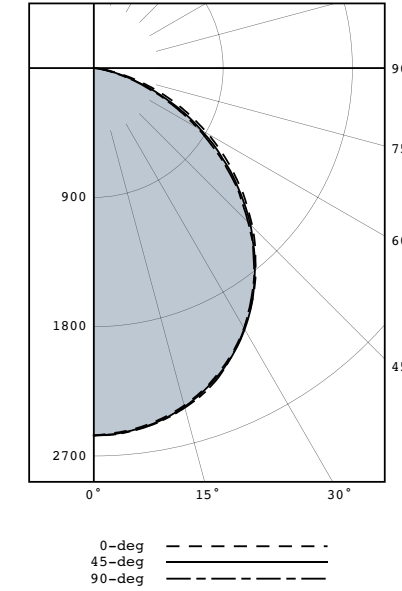
86	89	91	91	89	86
94	97	99	99	97	94
101	105	107	107	105	101
108	112	114	114	111	108
113	117	119	119	117	112
115	119	122	122	119	115
114	119	121	121	118	114
111	115	117	117	115	111
105	108	111	111	109	105
98	100	102	103	101	98
88	91	92	93	91	88
79	82	84	84	82	78

EXAM ILLUMINATION
AVG: 104 fc
Max:Min 1.56:1

CANDELA PLOT

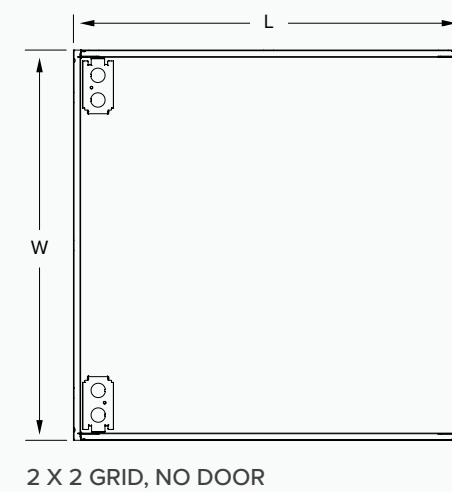
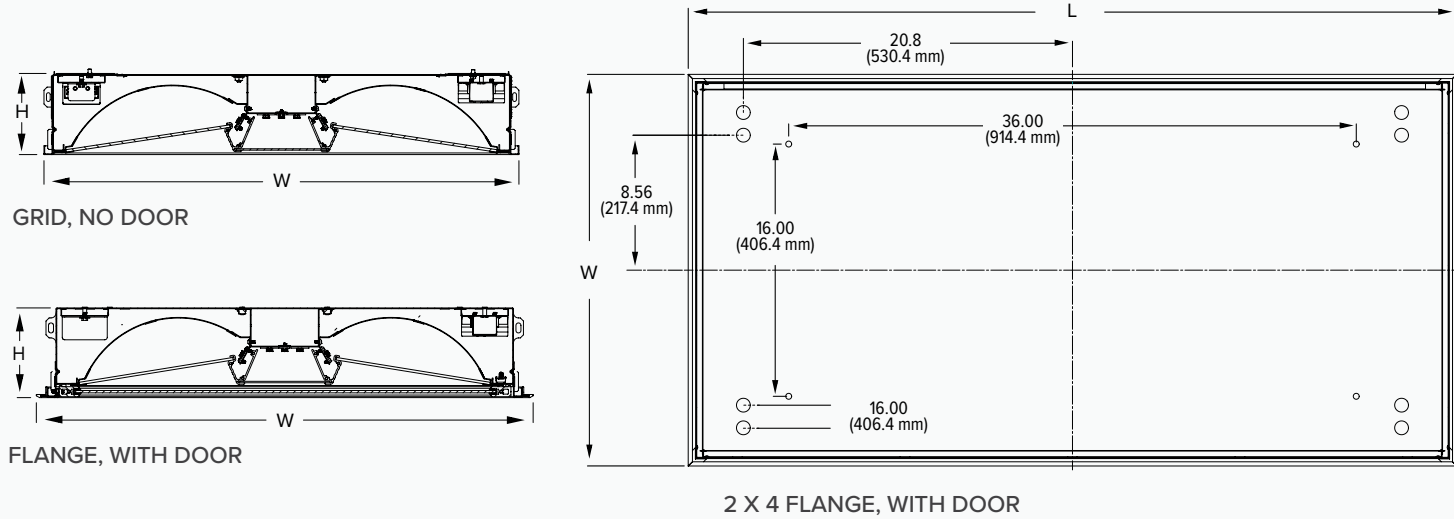
Ambient-Reading
Report No.: 17.01722
Model No.: MDM24-9-35-G-120-HLDA
Lumens: 6263
Input Watts: 95.1
Efficacy: 65.9 Lm/W

Examination (includes Ambient/Reading)
Report No.: 17.01723
Model No.: MDM24-9-35-G-120-HLDA
Lumens: 14,191
Input Watts: 189.1
Efficacy: 75.0 Lm/W



Ambient/Reading compartment is automatically activated when Exam function is turned on.

DIMENSIONS



		H	W	L	Ceiling Opening
MDM22	Grid Model	4.00" (101.6 mm)	23.75" (603.3 mm)	23.75" (603.3 mm)	
	Grid Model, Full Lensed Door	4.44" (112.8 mm)	23.75" (603.3 mm)	23.75" (603.3 mm)	
	Flange Model	4.05" (113.8 mm)	24.84" (630.9 mm)	24.84" (630.9 mm)	24.13" x 24.13" (612.9 mm x 612.9 mm)
	Flange Model, Full Lensed Door	4.48" (113.8 mm)	24.84" (630.9 mm)	24.84" (630.9 mm)	24.13" x 24.13" (612.9 mm x 612.9 mm)
MDM24	Grid Model	4.00" (101.6 mm)	23.75" (603.3 mm)	47.75" (1212.9 mm)	
	Grid Model, Full Lensed Door	4.44" (112.8 mm)	23.75" (603.3 mm)	47.75" (1212.9 mm)	
	Flange Model	4.05" (113.8 mm)	24.84" (630.9 mm)	48.75" (1238.3 mm)	24.13" x 48.13" (612.9 mm x 1222.5 mm)
	Flange Model, Full Lensed Door	4.48" (113.8 mm)	24.84" (630.9 mm)	48.75" (1238.3 mm)	24.13" x 48.13" (612.9 mm x 1222.5 mm)



ALERA LIGHTING

ARCHITECTURAL AREA LIGHTING

BEACON PRODUCTS

COLUMBIA LIGHTING

COMPASS

DUAL-LITE

HEALTHCARE SOLUTIONS

HUBBELL CONTROL SOLUTIONS

HUBBELL INDUSTRIAL LIGHTING

HUBBELL OUTDOOR LIGHTING

KIM LIGHTING

KURT VERSEN

LITECONTROL

PRESCOLITE

WHITEWAY



701 Millennium Blvd. Greenville, SC 29607
Tel 864.678.1000
www.hubbellhealthcare.com

HHS0009 Revised January 2018

Copyright © 2018 Healthcare Solutions, a division of Hubbell Lighting, Inc. All rights reserved. Please refer to online specifications for most up-to-date content as specifications are subject to change without notice.