



## MEDIMODE™

Multi-Function Recessed  
Patient Room Light

# MEDIMODE™

The MediMode™ portfolio of luminaires responds to the varied needs of today's healthcare facilities. Its contemporary aesthetics complements today's patient room designs while MediMode's optical performance meets light level recommendations without sacrificing patient comfort. Explore the range of MediMode solutions that fit your facilities' needs.

## MEDIMODE

The MediMode recessed patient light blends the need for multi-function illumination with the desire for an aesthetically pleasing appearance. The healthcare team and the patient both benefit to the optical approach that meets performance targets while enhancing visual comfort.

## MEDIMODE BEHAVIORAL

The features and aesthetics of MediMode can be extended to low, medium and high risk behavioral spaces. This allows consistency in appearance, operation and servicing throughout the facility. Recommended by the NY State Office of Mental Health.

## MEDIMODE POWERHUBB™

Hubbell's PowerHUBB, an enterprise level Power-Over-Ethernet (PoE) lighting and control platform technology delivers all the standard features of MediMode while seamlessly integrating MideMode and other luminaires with sensors, human interfaces and software for a scalable intelligent building controls solution.



## APPLICATIONS

PATIENT ROOMS

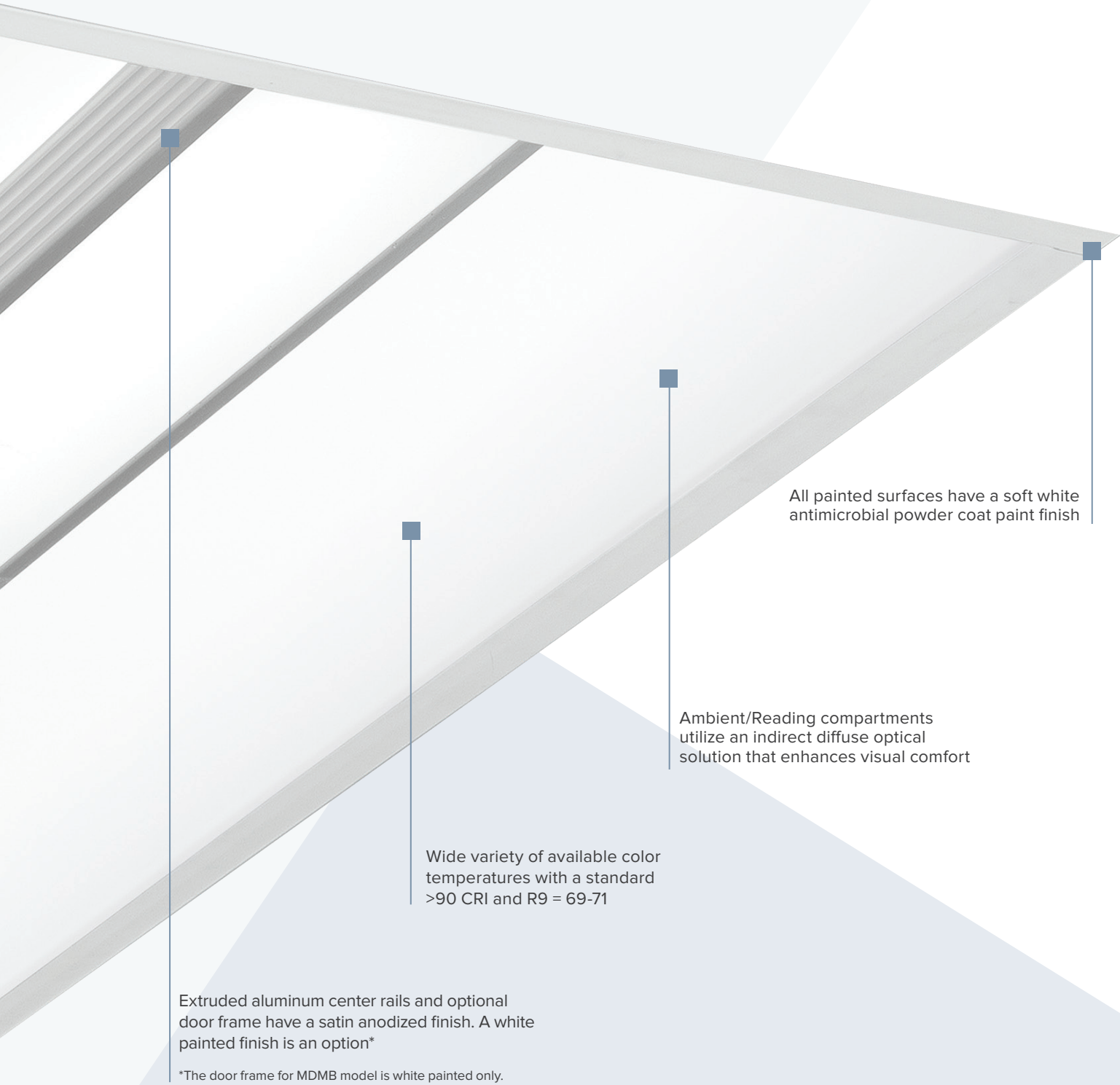
PRE- AND POST-OP AREAS

BEHAVIORAL SPACES

EMERGENCY ROOM EXAMINATION

PHYSICIAN'S OFFICES





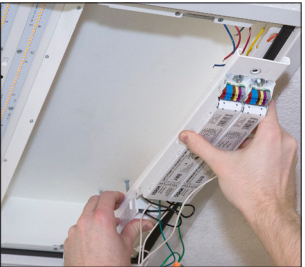
All painted surfaces have a soft white antimicrobial powder coat paint finish

Ambient/Reading compartments utilize an indirect diffuse optical solution that enhances visual comfort

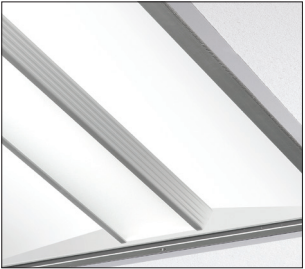
Wide variety of available color temperatures with a standard >90 CRI and R9 = 69-71

Extruded aluminum center rails and optional door frame have a satin anodized finish. A white painted finish is an option\*

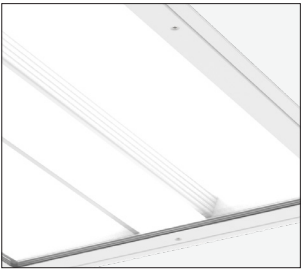
\*The door frame for MDMB model is white painted only.



- SIMPLICITY**
- The one-piece optical tray and quick-change gear trays simplifies installation and servicing.



- MEDI MODE™ | MEDI MODE POWERHUBB™ OPTIONAL DOOR**
- Extruded aluminum door with clear acrylic or polycarbonate lens provides IP65 rating and UL Sanitation rating.

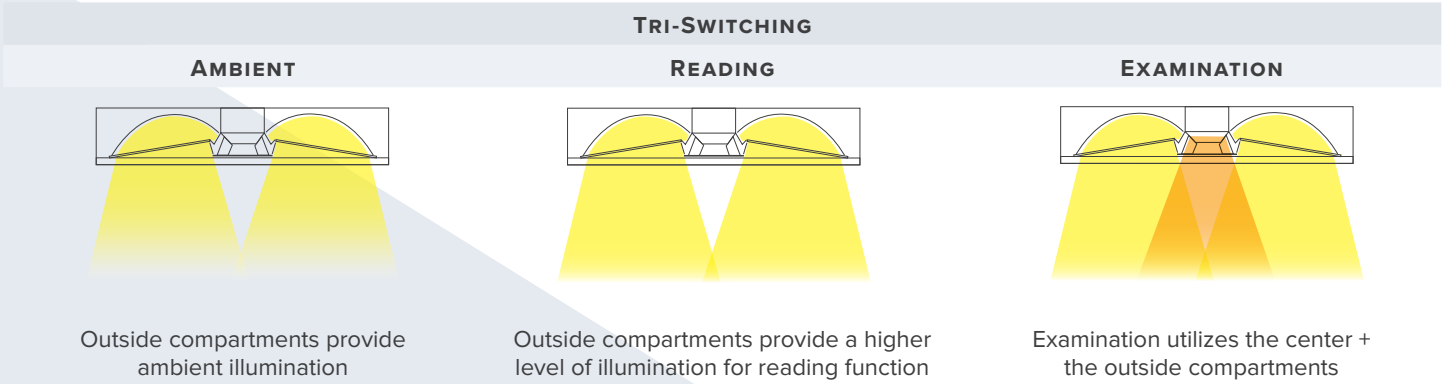
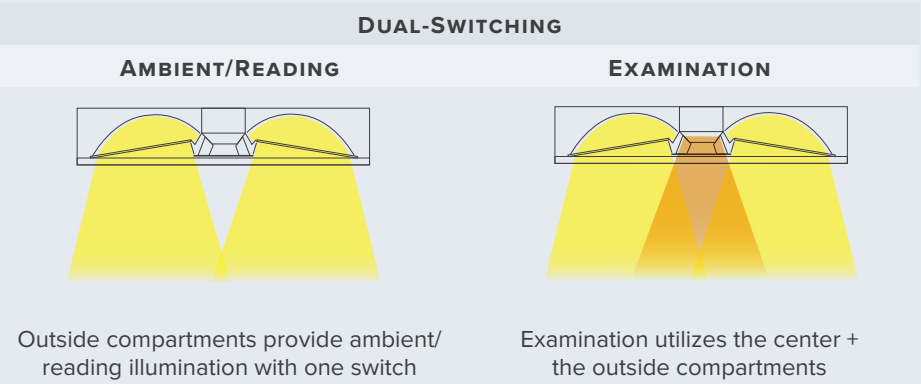


- MEDI MODE BEHAVIORAL DOOR**
- One-piece steel door frame with nominal 0.25" clear polycarbonate, full perimeter hold-down brackets and tamper-resistant hardware.

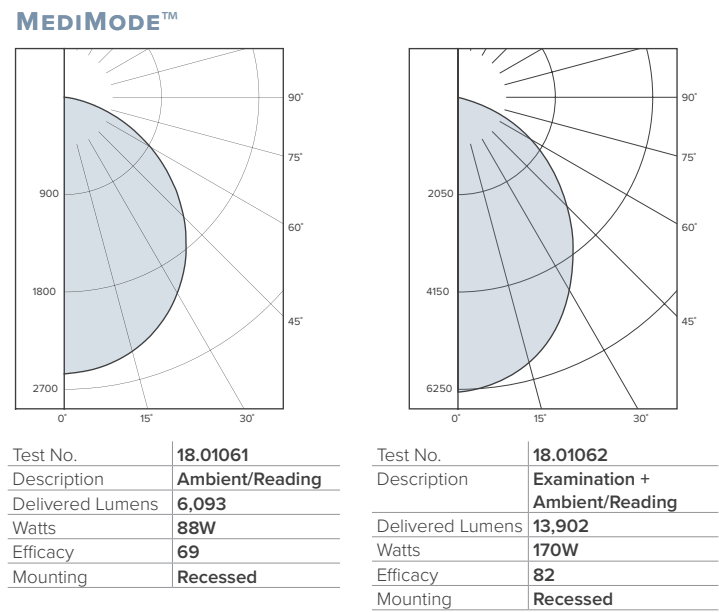


- NIGHT LIGHT**
- Available with optional night light in amber (590 nm) or white (3000K) light source.

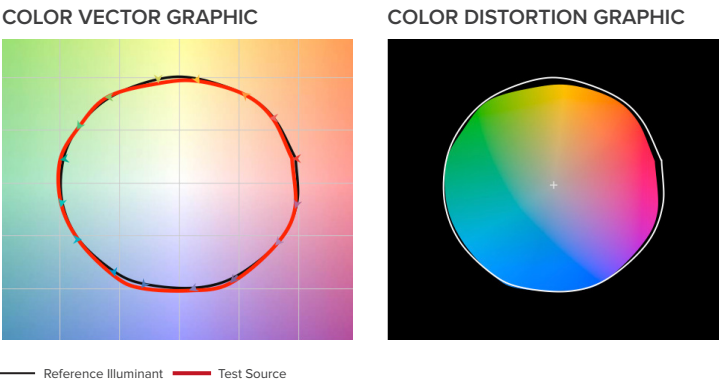
FUNCTIONALITY



PHOTOMETRY



TM-30 DATA



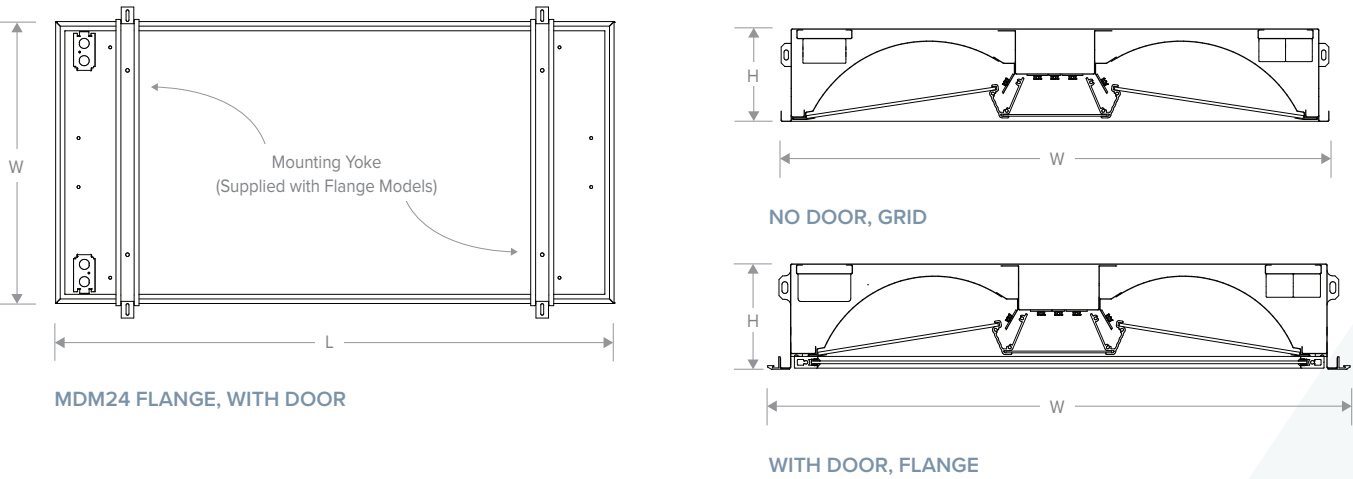
MBM TEST RESULTS		KEY DATA	
CCT (K)	3464	Lumen Range	2,009–16,836 LMS
Rf	92	Wattage Range	33–178 WATTS
Rg	100	Efficacy Range	62-103 LPW
CIE Ra	96	LED Life	60,000 HRS
CIE R9	69-71		

MEDIMODE™ PERFORMANCE CHART

	AVG. ILLUMINANCE (footcandles)      UNIFORMITY      POWER (W)      EFFICACY (lm/W)				IESNA RECOMMENDED TARGETS			
					AVG. ILLUMINACE (footcandles)			UNIFORMITY
					AGE OF USER (yrs.)			
					<25	25-65	>65	
Ambient*	18.2	3.6:1 (Avg:Min)	88	70	5	10	20	4:1 (Avg:Min)
Reading-Inclined	72.7	1.2:1 (Avg:Min)	88	70	20	40	80	3:1 (Avg:Min)
Reading-Horizontal	51.6	1.1:1 (Avg:Min)	88	70	20	40	80	3:1 (Avg:Min)
Examination	118	1.6:1 (Avg:Min)	170	82	25	50	100	5:1 (Max:Min)

\*Based on a 12'x12' area positioned around the patient bed.

DIMENSIONS



	MDM22			MDM24			MDMPH24		
	H	W	L	H	W	L	H	W	L
Grid Model	4.00" (101.6 mm)	23.75" (603.3 mm)	23.75" (603.3 mm)	4.00" (101.6 mm)	23.75" (603.3 mm)	47.75" (1212.9 mm)	5.10" (129.5 mm)	23.75" (603.3 mm)	47.75" (1212.9 mm)
Grid Model, Full Lensed Door	4.44" (112.8 mm)	23.75" (603.3 mm)	23.75" (603.3 mm)	4.44" (112.8 mm)	23.75" (603.3 mm)	47.75" (1212.9 mm)	4.98" (126.5 mm)	23.75" (603.3 mm)	47.75" (1212.9 mm)
Flange Model	4.05" (113.8 mm)	24.84" (630.9 mm)	24.84" (630.9 mm)	4.05" (113.8 mm)	24.84" (630.9 mm)	48.75" (1238.3 mm)	5.15" (130.8 mm)	24.84" (630.9 mm)	48.75" (1238.3 mm)
Flange Model, Full Lensed Door	4.48" (113.8 mm)	24.84" (630.9 mm)	24.84" (630.9 mm)	4.48" (113.8 mm)	24.84" (630.9 mm)	48.75" (1238.3 mm)	5.02" (127.5 mm)	24.84" (630.9 mm)	48.75" (1238.3 mm)
	MDMB22			MDMB24					
	4.41" (112.0 mm)	24.48" (621.8 mm)	24.48" (621.8 mm)	4.41" (1120 mm)	24.48" (621.8 mm)	48.48" (1231.4 mm)			

SPECIFICATIONS

MEDI MODE™



CONSTRUCTION

- 20 gauge, one-piece CRS housing. (Full-seam welding for models with optional full-lensed door.)
- Optical frame with CRS formed reflectors and captured lenses.
- Optional full-lensed door models have extruded, anodized aluminum door frame.

LENS

- Optical frame has captured, translucent acrylic lenses.
- Optional full-lensed door has nom. 0.125" clear acrylic or polycarbonate lens.

FINISH

- Housing and reflectors have antimicrobial paint finish that inhibits the growth of microbes.

INSTALLATION/ MOUNTING

- MediMode is available in either a Grid (G) or Flange (F) model.

LIGHT SOURCE

- The LED light source is available in 3000K, 3500K, 4000K and 5000K CCT with standard > 90 CRI and high R9 values for excellent color rendition.

- Optimal life > 60,000 hours at 80% lumen maintenance.

ELECTRICAL

- Each mode of operation is controlled independently by a dedicated driver.
- Available in universal 120-277V, 50/60 Hz. Contact factory for other supply voltage needs. (Specification of dedicated voltage may be required for certain options.)
- Drivers are suitable of 0-10V dimming down to 1%. (Dimming performance will vary when low voltage controller options are selected.)

SWITCHING

- MediMode is wired to have independent control of each function.

- The ambient/reading and night light functions can be controlled with integral low voltage controller (LVC) options. The LVC allows control with patient pillow switch (by others) wired through the nurse call system (by others).
- The exam function is typically controlled through a wall switch (by others).
- Tri-Switched (TS) option separates the control of the ambient and reading functions.

CERTIFICATIONS

- Built and tested to UL1598 standard and bears the cCSAus label for Wet Locations in covered ceilings.
- IP65 rated per IEC 60598 (with optional full-lensed door).
- UL Sanitation rated with SLDA and SLDP option.
- Photometrically tested per IESNA-79 standards and LM-80 compliant.

WARRANTY

- 5 year warranty.
- See [HLI Standard Warranty](#) for additional information

MEDI MODE™ BEHAVIORAL



CONSTRUCTION

- 20 gauge, one-piece, seam welded CRS housing.
- 18 gauge, one-piece CRS door frame with 0.250" clear polycarbonate lens held down with full-length brackets.
- Internal optical frame with metal reflector and diffusing lenses.

FINISH

- The housing and reflectors are painted with polyester white powder coat with an antimicrobial additive to inhibit the growth of microbes.

INSTALLATION/ MOUNTING

- MediMode is flange (F) mounted utilizing a yoke ceiling bracket.

- The door frame is secured to the housing with perimeter, stainless steel center-pin Torx® head screws.
- The door frame is supported from the housing via aircraft cable tethers.

LIGHT SOURCE

- The LED source is available in 3000K, 3500K, 4000K and 5000K CCT with standard >90 CRI, high R9 for excellent color rendering and optimal life > 60,000 hours at 80% lumen maintenance.

ELECTRICAL

- Available in universal 120V-277V; 50/60 Hz. Each mode of operation is controlled independently by a dedicated electronic driver.
- Drivers are suitable for 0-10V dimming down to 1%. Contact factory for other supply voltage needs.

SWITCHING

- The MediMode luminaire is wired to have independent control of each function. Consult factory for application requiring a low voltage controller.

- Dual-Switched (DS) - For mult-function use where ambient/reading and Exam functions are controlled separately
- Single-Switched (SS) - For ambient lighting use where all compartments are switched together.

CERTIFICATIONS

- Built and tested to UL1598 standard and bears the cCSAus label for Wet Locations in covered ceilings
- Recommended by the New York State Office of Mental Health
- Photometrically tested per IESNA-79 standards and LM-80 compliant

- UL Sanitation rated

WARRANTY

- 5 year warranty.
- See [HLI Standard Warranty](#) for additional information.

EXAMPLE: MDM24-9-40-G-120-HLD-NA-LVCD SM2

MDM		9											
MODEL		SIZE		CRI		COLOR TEMP		SWITCHING OPTION		CEILING TYPE		VOLTAGE	
MDM	MediMode Patient Room Luminaire	22	2'x2' (nom.)	9 <sup>1</sup>	90 CRI	30	3000K	BLANK <sup>1</sup>	Dual-Switched (Ambient and Reading functions controlled together)	G	Grid Mount	U	Universal (120-277V)
	24	2'x4' (nom.)	8	80 CRI	35	3500K							
					40	4000K							
					50	5000K	TS <sup>8</sup>	Tri-Switched (Ambient and Reading functions controlled independently)			120	120V	277

OPTIONS	
HLDA <sup>2</sup>	Hinged lens door with clear acrylic lens (nom. 0.125" thickness)
HLDP <sup>2</sup>	Hinged lens door with clear polycarbonate lens (nom. 0.125" thickness)
SLDA <sup>2,3</sup>	Screwed-in lens door with clear acrylic lens (nom. 0.125" thickness)
SLDP <sup>2,3</sup>	Screwed-in lens door with clear polycarbonate lens (nom. 0.125" thickness)
WT	White internal aluminum rails. Door frame will also be white when full-lensed door option is selected.
NA <sup>4</sup>	Night Light Amber (590nm), (120V only)
NW <sup>4</sup>	Night Light White (3000K), (120V only)
LVC1 <sup>4,5,6</sup>	Low Voltage Controller for individual control of ambient/reading mode
LVC2 <sup>4,5,6</sup>	Low Voltage Controller for individual control of ambient/reading mode and night light mode
LVC21 <sup>4,6,7</sup>	Low Voltage Controller for individual control of ambient and reading modes
LVC3 <sup>6,7</sup>	Low Voltage Controller for individual control of ambient mode, reading mode and night light mode
LVCD__ <sup>6</sup>	Low Voltage Controller with dimming (0-10V) for ambient/reading function. Refer to LVC Selection Chart on product spec sheet to complete option code. (Ex. LVCD SM1)
ELL14 <sup>8</sup>	Emergency battery pack
GMF	Slow blow fuse
TR	Tamper-resistant hardware (center-pin Torx)

ACCESSORIES	
FK22H	Framing kit for field conversion of 2x2 Grid (G) fixture to Flange (F) fixture. This accessory is not required if Flange (F) fixture is ordered.
FK24H	Framing kit for field conversion of 2x4 Grid (G) fixture to Flange (F) fixture. This accessory is not required if Flange (F) fixture is ordered.

- 1 Default selection unless specified otherwise
- 2 IP65 rated
- 3 UL Sanitation rated
- 4 Must specify voltage
- 5 For Dual-Switching models only
- 6 See LVC Selection Chart on specification sheet for additional information
- 7 For Tri-Switching models only
- 8 Not available in 2x2 model

EXAMPLE: MDMB24-9-40-F-120-NA

MDMB		9				F			
MODEL		SIZE	CRI	COLOR TEMP	SWITCHING OPTION		CEILING TYPE	VOLTAGE	
MDMB MediMode Patient Room Luminaire for Behavioral Applications	22 2'x2' (nom.)	9 <sup>1</sup> 90 CRI	30 3000K	BLANK <sup>1</sup> Ambient/Reading and Exam functions switched separately		F Flange Mount	U Universal (120-277V)		
	24 2'x4' (nom.)	8 80 CRI	35 3500K				120 120V		
			40 4000K	SS All functions switched together					
			50 5000K						

OPTIONS	
NA	Night Light Amber (590nm), (120V only)
NW	Night Light White (3000K), (120V only)
WT	White finish for internal extruded aluminum trim
ELL14 <sup>2</sup>	Emergency battery pack
GMF	Slow blow fuse

- 1 Default selection unless specified otherwise
- 2 2x4 only



SPECIFICATIONS

MEDI MODE™ POWERHUBB™



**CONSTRUCTION**

- 20 gauge, one-piece CRS housing. (Full-seam welding for models with optional full-lensed door.)

- Optical frame with CRS formed reflectors and captured lenses.
- Optional full-lensed door models have extruded, anodized aluminum door frame.

**LENS**

- Optical frame has captured, translucent acrylic lenses.
- Optional full-lensed door has nom. 0.125" clear acrylic or polycarbonate lens.

**FINISH**

- Housing and reflectors have antimicrobial paint finish that inhibits the growth of microbes.

**INSTALLATION/MOUNTING**

- MediMode is available in either a Grid (G) or Flange (F) model.

**LIGHT SOURCE**

- The LED light source is available in 3000K, 3500K, 4000K and 5000K CCT with standard > 90 CRI and high R9 values for excellent color rendition.
- Optimal life > 60,000 hours at 80% lumen maintenance.

**ELECTRICAL**

- Integral PowerHUBB nodes replace standard electronic AC drivers in luminaire.
- Nodes are programmed for optimized performance of the LED and allow bi-directional communication.
- Nodes provide dimming functions down to 1%.

**SWITCHING**

- MediMode is wired to have independent control of ambient/reading, exam and optional night light functions.
- Switching options include network wall stations and/or a patient pillow switch (by others).

- Hubbell Control Solutions' PowerHUBB is an enterprise level Power-over-Ethernet (PoE) lighting and control platform that seamlessly integrates luminaires, sensors, human interfaces and software for a scalable intelligent building control solution.

**CERTIFICATIONS**

- Built and tested to UL1598 and 2108 standards and bears the cCSAus label for Wet Locations in covered ceilings.

- IP65 rated per IEC 60598 (with optional full-lensed door).
- UL Sanitation rated with SLDA and SLDP option.
- Photometrically tested per IESNA-79 standards and LM-80 compliant.

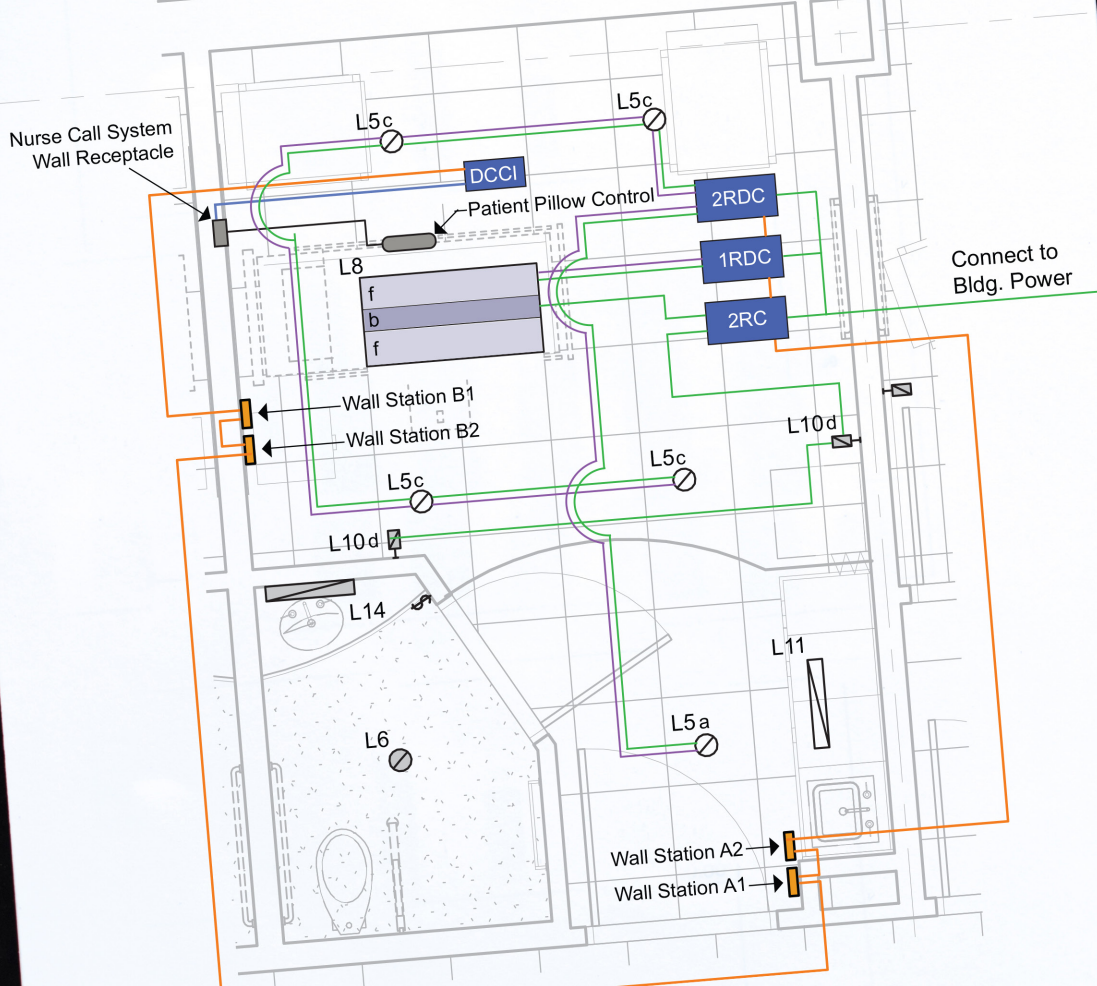
**WARRANTY**

- 5 year warranty.
- See [HLI Standard Warranty](#) for additional information

EXAMPLE: MDMPH24-9-40-G-HLDA-NA

MDMPH		24	—	9	—	—	—	—	—		
MODEL		SIZE		CRI		COLOR TEMP		CEILING TYPE		OPTIONS	
MDMPH	MediMode Patient Room Luminaire PowerHUBB Enabled	24	2'x4' (nom.)	9	90 CRI	30	3000K	G	Grid Mount	HLDA <sup>1</sup>	Hinged lens door with clear acrylic lens (nom. 0.125" thickness)
						35	3500K			HLDP <sup>1</sup>	Hinged lens door with clear polycarbonate lens (nom. 0.125" thickness)
						40	4000K			SLDA <sup>1,2</sup>	Screwed-in lens door with clear acrylic lens (nom. 0.125" thickness)
						50	5000K			SLDP <sup>1,2</sup>	Screwed-in lens door with clear polycarbonate lens (nom. 0.125" thickness)
								F	Flange Mount	NA	Night Light Amber (590nm)
										NW	Night Light White (3000K)
										WT	White internal aluminum rails. Door frame will also be white when door option is selected.
										TR	Tamper-resistant hardware (center-pin Torx)

TYPICAL PATIENT ROOM - EAST TOWER  
LIGHTING AND CONTROL PLAN



**NX DISTRIBUTED INTELLIGENCE**

Hubbell Lighting offers a comprehensive portfolio of solutions that are simple, reliable and scalable with seamless integration. There are variety of control options available that can integrate with MediMode™ luminaires that range from local control to a multi-facility solution.



**NX SMART SWITCH**

The NX Smart Switch (NXSW) provides manual control of the NX System. Each button has an LED status indicator and can be configured to control individual loads or groups of loads.



**NX ROOM CONTROLLER**

Used individually or in combination with other NX Room Controllers (NXRC), the NXRC provides a complete standalone room control solution that can be networked for facility wide lighting control.

**HUBBELL**  
Control Solutions

**INTEGRAL LOW VOLTAGE CONTROLLERS**

MediMode™ can be configured with a variety of low voltage controller (LVC) options to allow the patient complete control of their lighting. The LVC is integral to the luminaire and seamlessly interfaces with the facility's nurse call system and patient bed control and provides On/Off or dimming functionality. See the Ordering Guide on page 10 or visit [www.hubbellhealthcare.com](http://www.hubbellhealthcare.com) for further information.

**NX DISTRIBUTED INTELLIGENCE**

Hubbell Control Solutions NX Distributed Intelligence™ lighting control platform provides choices for a single room, an entire building, or multi-location properties. The system has both wired and wireless controls, for interior and exterior installations, using familiar wall switch stations and interfaces. NX offers both standard patient control options and control solutions for the rest of the room.

Contact Hubbell Control Solutions for further details and support.

**POWERHUBB™**  
PoE LIGHTING & CONTROL

Hubbell Control Solutions' PowerHUBB™ is an enterprise level Power-Over-Ethernet (PoE) lighting and control platform. The system uses industry-standard Category 5/6 networking cables and PoE-enabled network switches to send power and data to a wide variety of Hubbell Lighting luminaires. MediMode with PowerHUBB leverages the safe, low-voltage power delivery and feature-rich software functions of the system.

**SpectraSync™**  
Color Tuning Technology

Hubbell Lighting's \*SpectraSync™ color tuning technology is an intuitive and versatile platform to provide a scheduled white solution that can bring the rhythm of nature indoors by enabling CCT and intensity control throughout your day with a straightforward 0-10V interface.

Contact Technical Support for further details.

Visit [www.hubbellcontrolsolutions.com](http://www.hubbellcontrolsolutions.com) for additional information on NX Distributed Intelligence, PowerHUBB and SpectraSync control solutions.





Hubbell Healthcare Solutions offers a variety of complementary and alternative solutions for the patient room environment. As with MediMode™, each are designed with patient comfort and healthcare staff efficiency in mind while delivering lighting performance, durability and simplicity of installation and operation.



### REMEDI™

The Remedi bed light has a unique design capable of addressing the ambient, reading, examination and night lighting needs for the patient and healthcare staff. With four distinct optical compartments and an open design, there is no need to physically manipulate any portion of the luminaire - a time saver for the caregiver and safer for the patient.



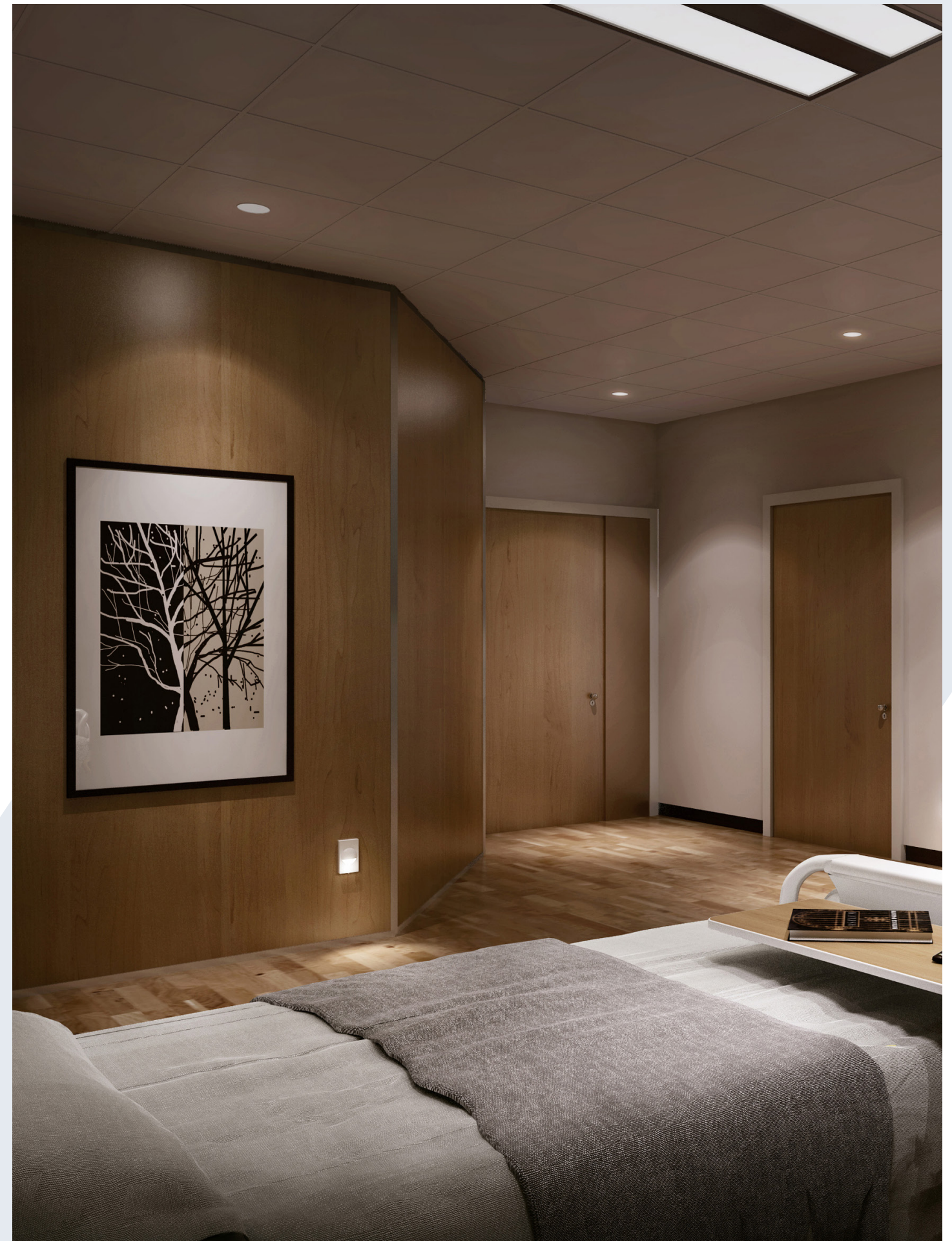
### EVEXIA™

Evexia is designed to meet the ambient and reading lighting needs in patient rooms and assisted living facilities. The luminaire has a low profile that reduces the visual impact on the wall. The contoured shape, smooth surface and anti-microbial finish support infectious disease control efforts.



### NITEWAY™

The NiteWay patient room night light is the ideal choice for the demands of healthcare environments. It combines an aesthetically pleasing form with low glare performance, rugged durability and water-tight construction. Approved by the NY State Office of Mental Health.







ALERA LIGHTING

ARCHITECTURAL AREA LIGHTING

BEACON PRODUCTS

COLUMBIA LIGHTING

COMPASS

DUAL-LITE

HEALTHCARE SOLUTIONS

HUBBELL CONTROL SOLUTIONS

HUBBELL INDUSTRIAL LIGHTING

HUBBELL OUTDOOR LIGHTING

KIM LIGHTING

KURT VERSEN

LITECONTROL

PRESCOLITE



701 Millennium Blvd. Greenville, SC 29607  
Tel 864.678.1000  
[www.hubbellhealthcare.com](http://www.hubbellhealthcare.com)

HHS0009 01/19

Copyright © 2019 Healthcare Solutions, a division of Hubbell Lighting, Inc. All rights reserved. Please refer to online specifications for most up-to-date content as specifications are subject to change without notice.