

INTERCEPT[®]

S P O R

T S

L I G H

T I N G

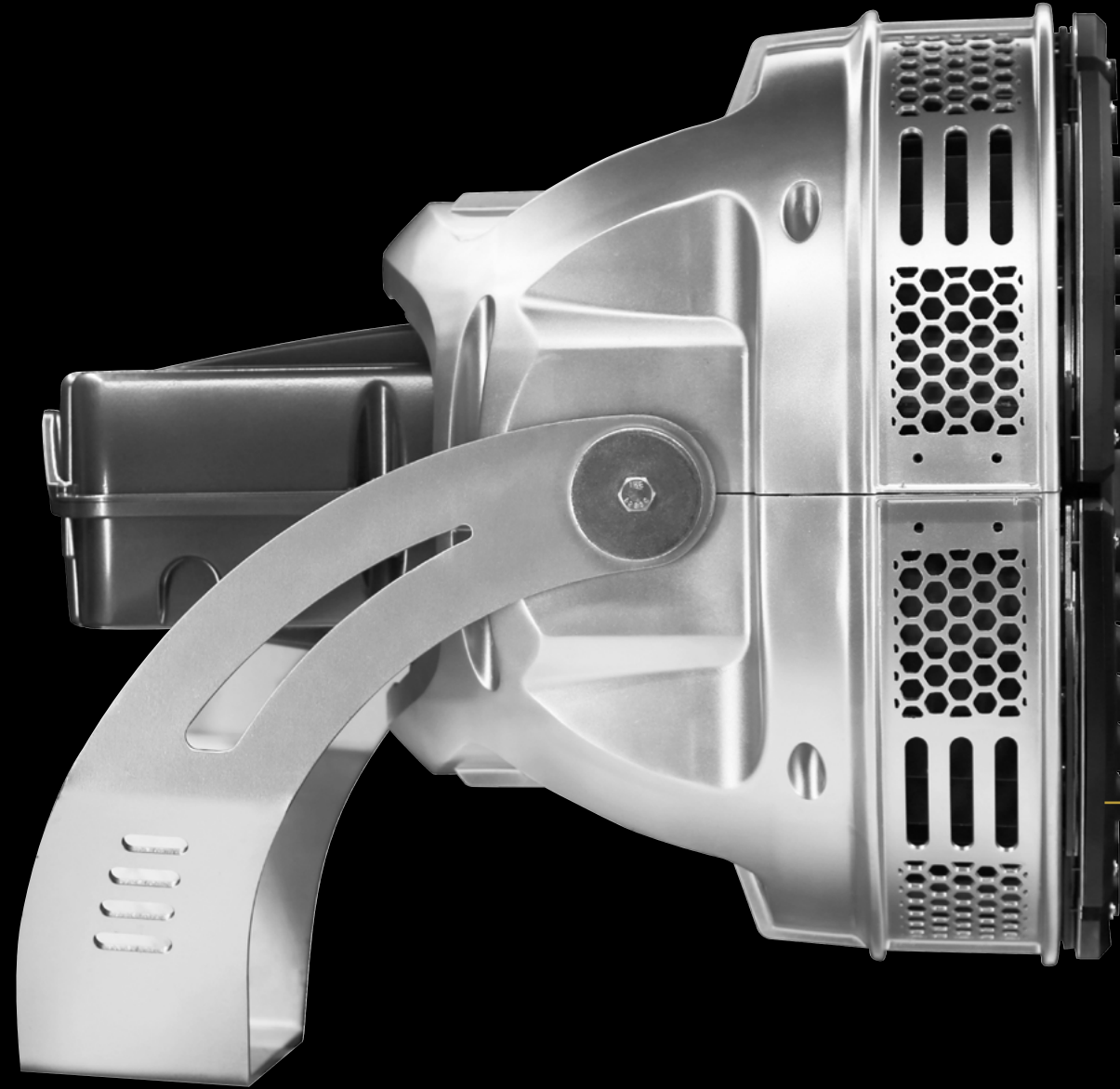
HUBBELL
Outdoor Lighting



HUBBELL
Lighting

ELEVATE YOUR GAME

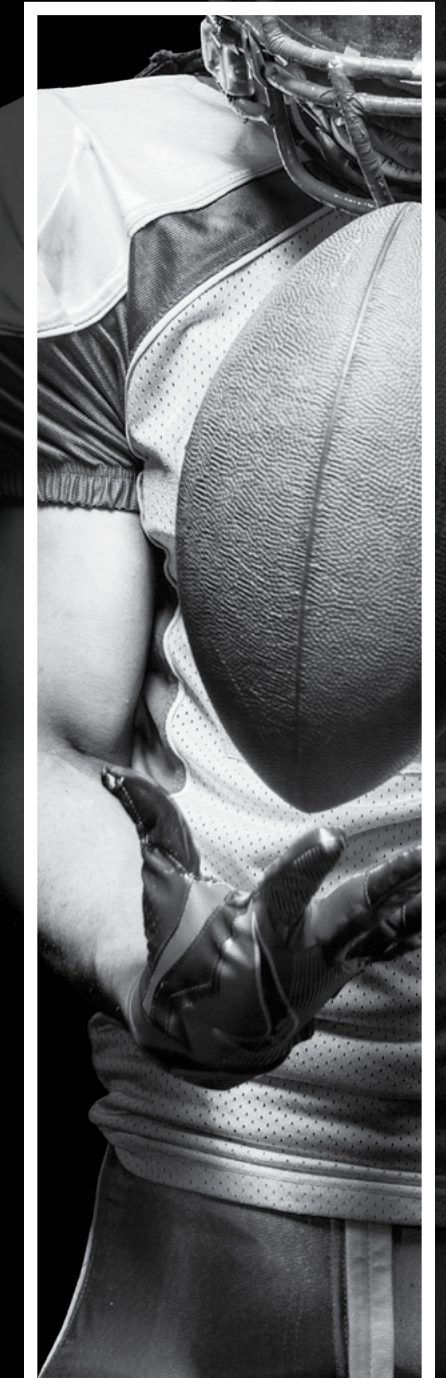
INTERCEPT® SPORTS LIGHTING



We *light your path to victory* by providing a system that *outperforms* anything you have *experienced* in the past.

A system that disappears before your eyes but *highlights everything* you *want and need to see*.

A system that operates *effortlessly and efficiently* so you can *elevate your game* and *experience* every moment.

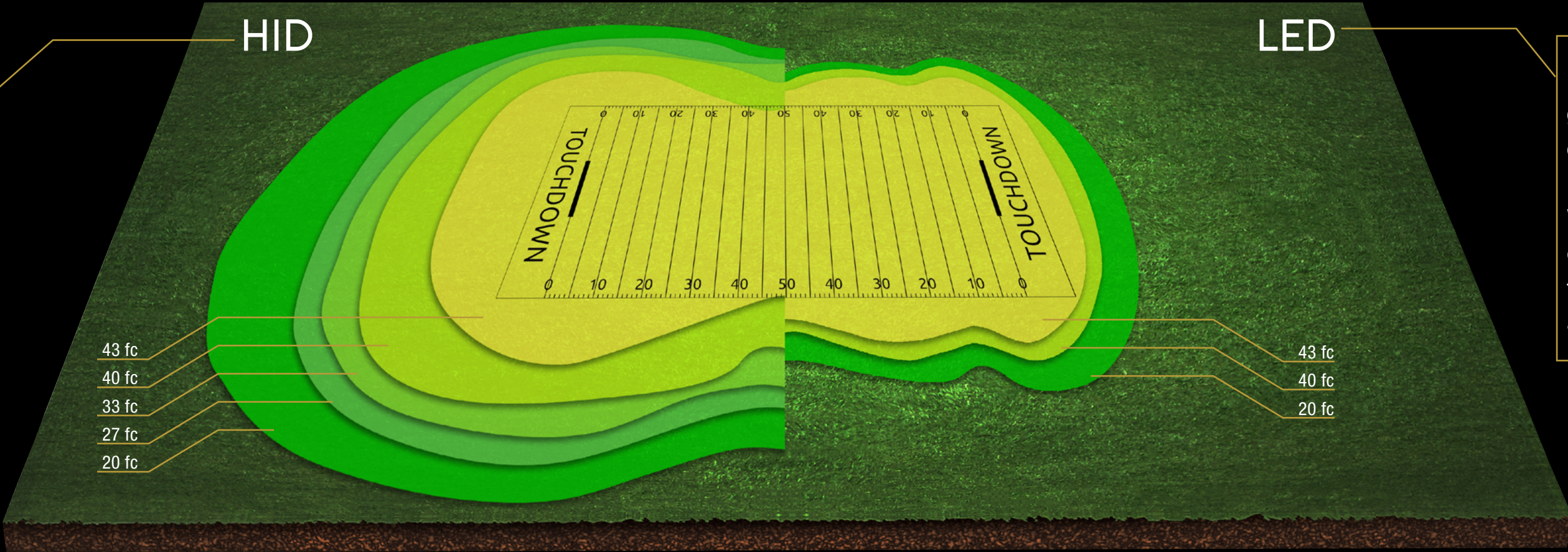


ELEVATE YOUR GAME

Performance

Legacy HID systems provided excellent initial light levels and uniformity, but difficult to contain illumination to the field.

This presents challenges in **reducing** the spill light surrounding the field.



Intercept's LED optics are recessed in a low glare shield providing the perfect combination of **optical accuracy** and **cutoff**.

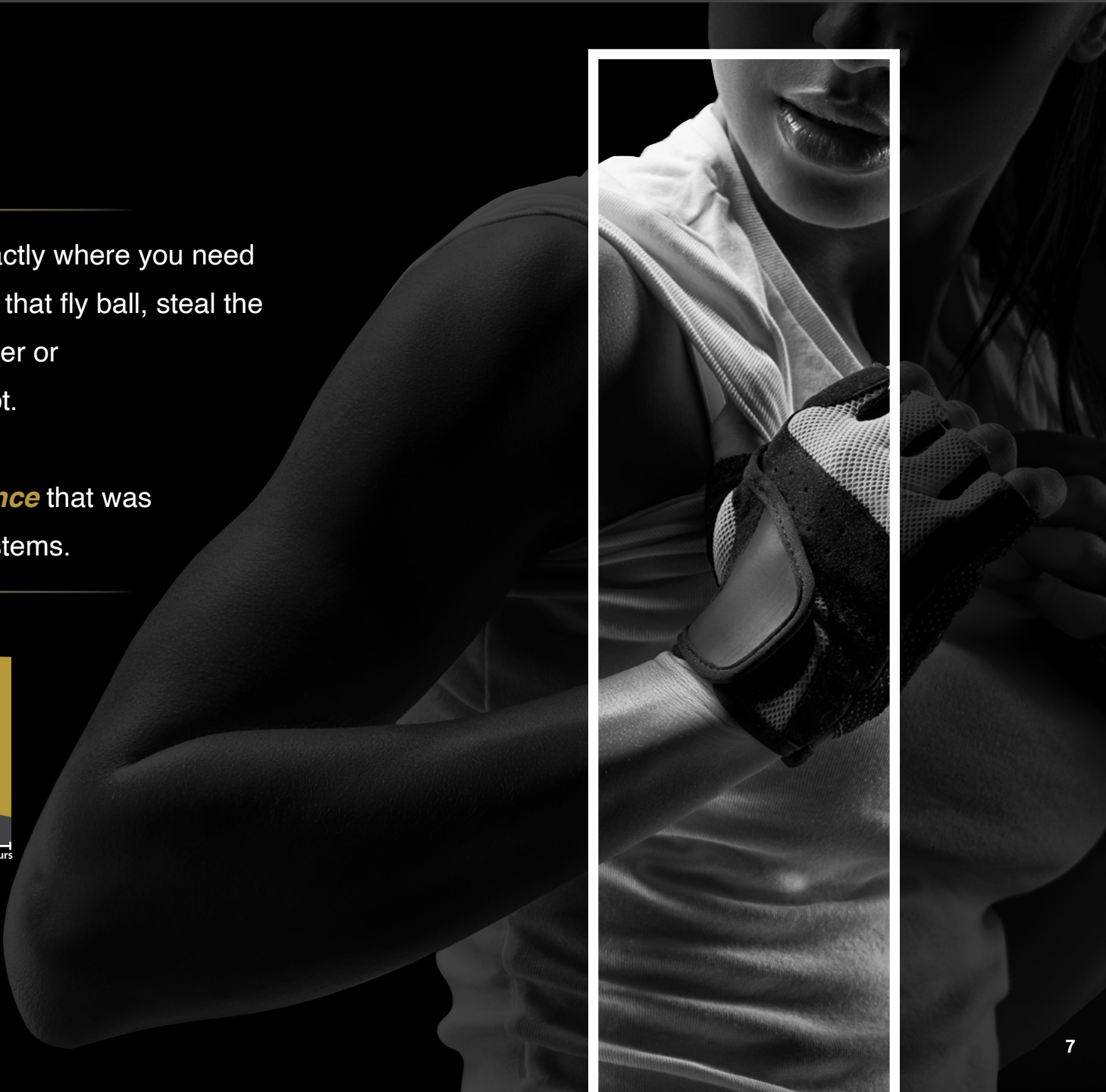
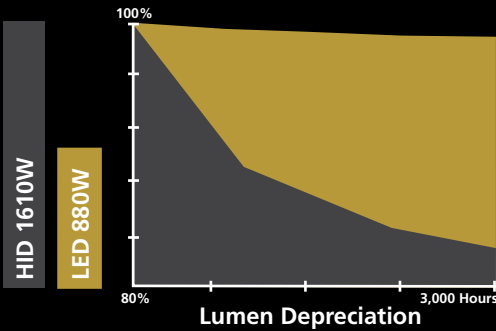
When aimed on the field, this results in excellent light levels and **uniformity** throughout the life of the system, as well as a significant reduction in spill light.

ELEVATE YOUR GAME
Experience



Intercept® delivers light exactly where you need it to spot the receiver, catch that fly ball, steal the puck, line up the three pointer or watch the game winning shot.

We can achieve *performance* that was not possible with legacy systems.



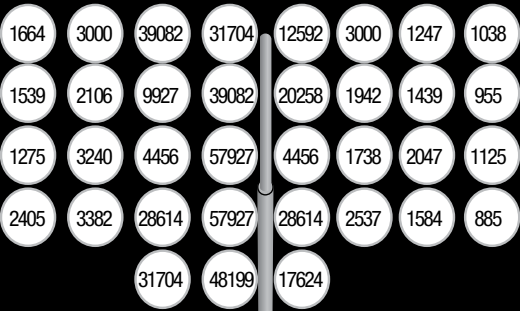
ELEVATE YOUR GAME

Glare Control

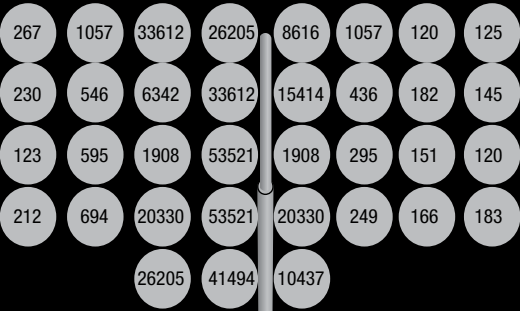


Athletes are under intense pressure to preform and any distractions that can potentially impact their performance should be eliminated or at the least minimized. Fixture glare has the potential to be a distraction if not properly controlled. Intercept's low Glare shield minimizes the glare at any point on the field to only the fixtures that are specifically aimed at that exact location.

No Glare Control



Intercept® With Glare Control



The illustrations above show the candela the batter sees from each LED fixture with and without glare control. There is a reduction in luminous intensity from every luminaire in some cases up to 93%.

ELEVATE YOUR GAME

Product Design

THERMAL

Dynamic thermal management design maximizes heat dissipation, substantially increasing life of the luminaire.

SURGE

Built in surge suppression adds an additional layer of protection for the luminaire's driver and electronic components.

LED MODULES

Scalable LED modules allow for an optimized configuration for different sports and class of play.

GLARE CONTROL

The Intercept® low glare shields provide industry leading glare reduction with minimal effect on light output.

OPTICS

Precision TIR optics place light on target with greater control.

EMBEDDED CONTROLS

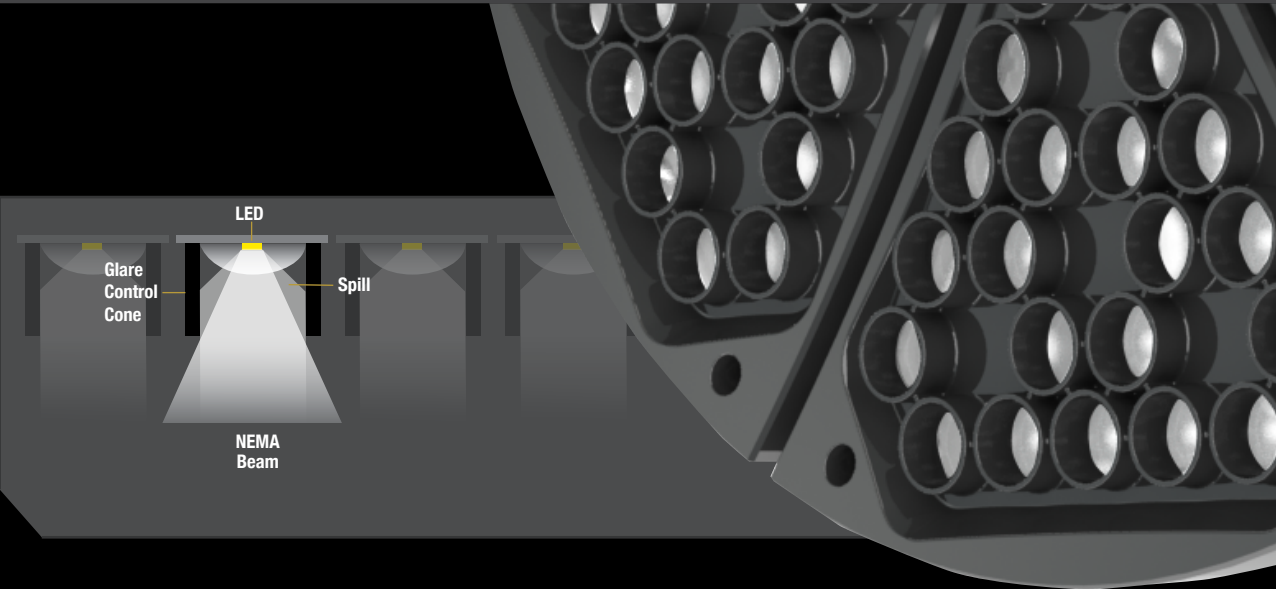
Flexible control solutions allow for individual fixture control for your desired functionality; anywhere from on/off control to a wireless, fully scheduled system.

INTEGRAL DRIVER

With integral or remote driver capabilities, this luminaire gives additional flexibility to fit into a variety of indoor and outdoor applications.

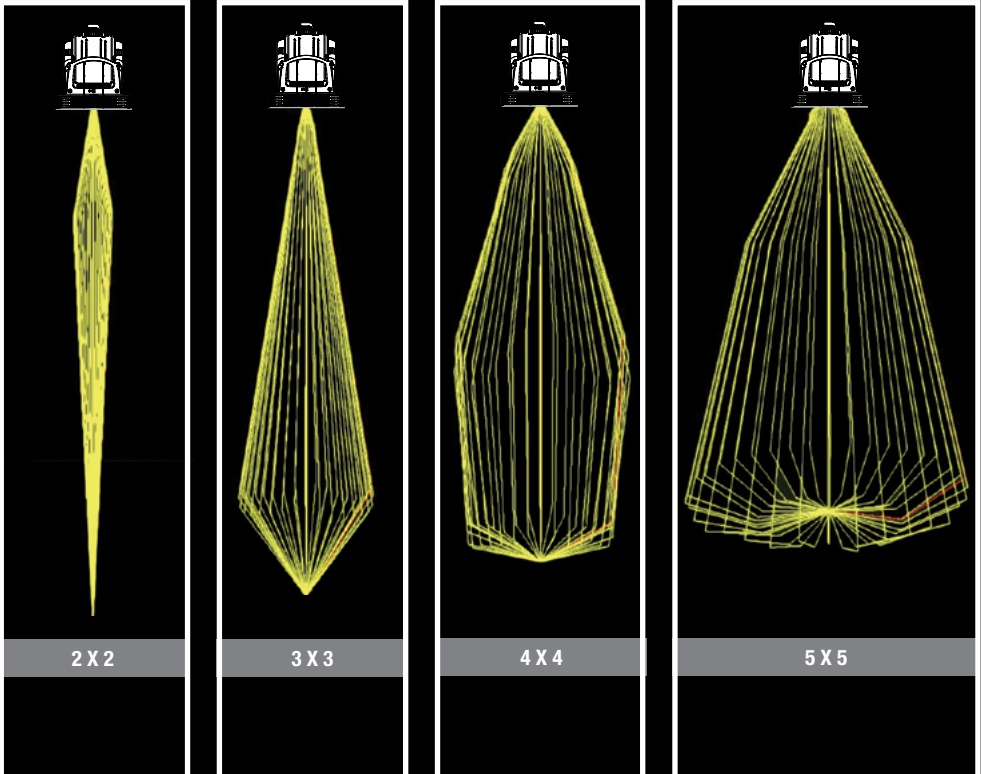
OPTICS SYSTEM

The louvered design encompasses each optic to reduce spill light without compromising the light within the concentrated beam. This glare control has the ability to reduce the candela per meter² outside of the beam by 92% while affecting the lumen output of the product by less than 10%. This results in a 37% reduction in the Glare Rating when compared to the typical LED solution.



BEAM SPREADS

The Intercept® is available in four beam spreads: 2x2, 3x3, 4x4 and 5x5. The variety of beam spreads are excellent for large venue applications and precise areas that require specialized illumination.



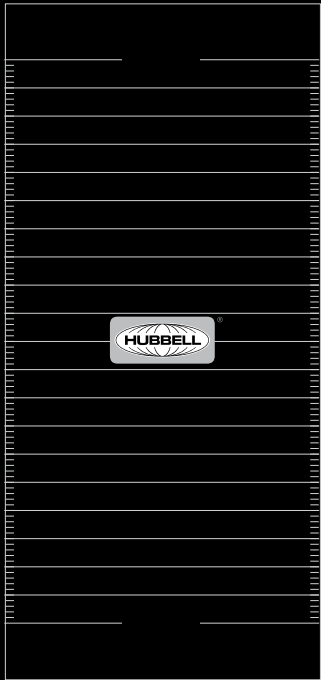
OUTDOOR SOLUTIONS

Intercept® Field Sport - VFS



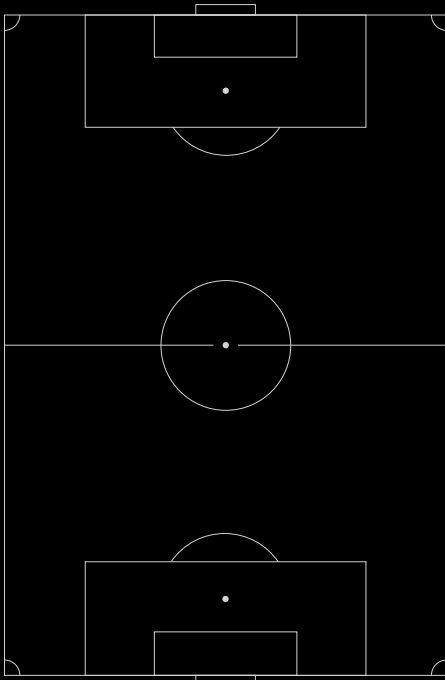
INTERCEPT® SPORTS LIGHTING

FOOTBALL



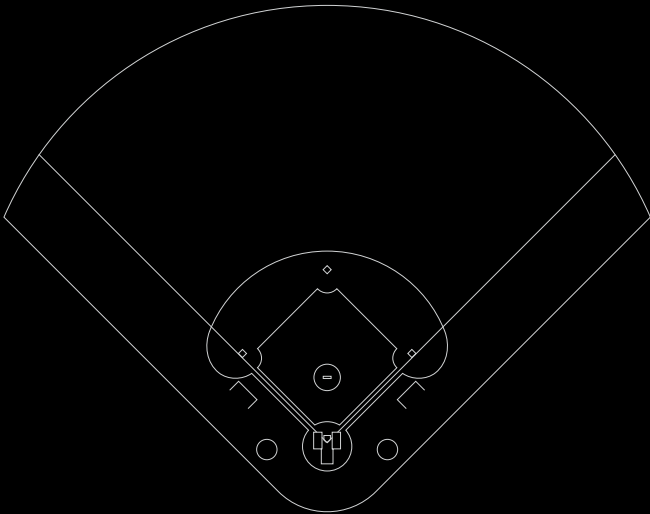
	HID	LED
Wattage	103 KW	53 KW

SOCCER



	HID	LED
Wattage	135 KW	59 KW

BASEBALL/SOFTBALL



	HID	LED
Wattage	81 KW	44 KW

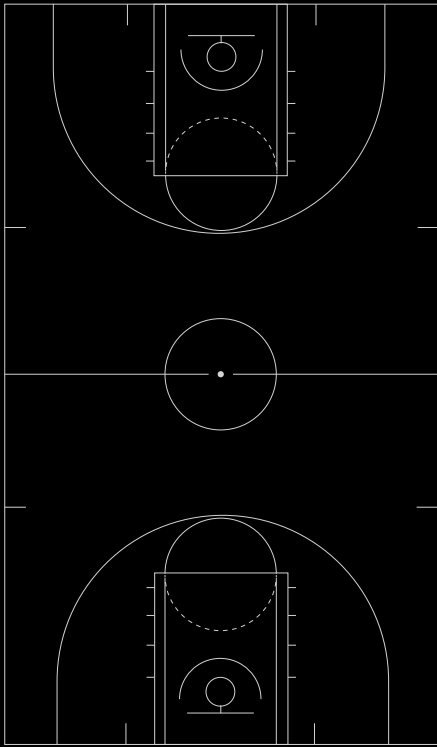


INDOOR SOLUTIONS

Intercept® Area Sport - VAS

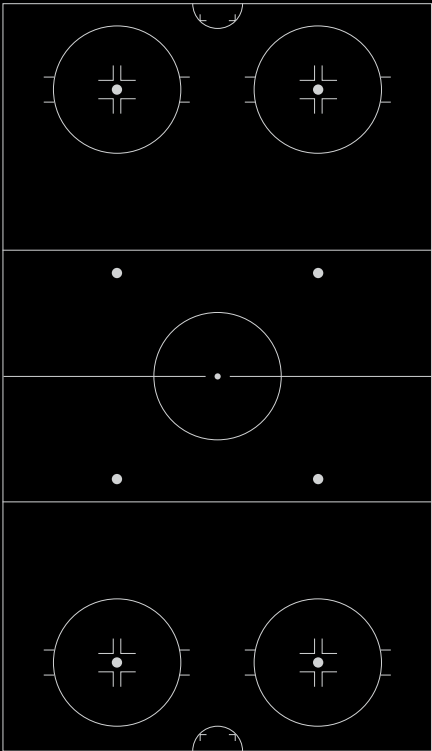


BASKETBALL



	HID	LED
Wattage	58 KW	43 KW

HOCKEY



	HID	LED
Wattage	137 KW	102 KW

INTERCEPT® SPORTS LIGHTING



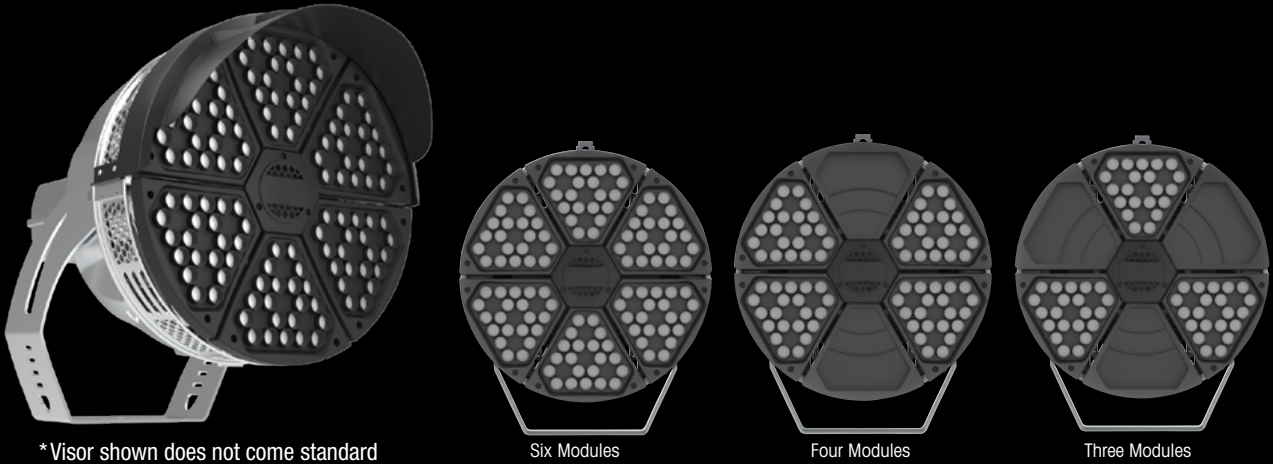
ORDERING

VFS - General Flood Sports Lighting

VFS		-		-		-		-		-		-		-		-	
SERIES		MOUNT		ENGINE-WATTS		CCT		DISTRIBUTION		VOLTAGE		CORD		CONTROL OPTIONS		OPTIONS	
VFS	Flood Sports Lighting	Y	Yoke	63L-440	440W, 45,000 lm	3K7	3000K, 70 CRI	2	2x2	277	277V	3C	3' Prewired SEOWA cord	CD	Continuous dimming	LGC	Less Glare Control
		UMY	Under Mount Yoke	84L-660	660W, 60,000 lm	4K7	4000K, 70 CRI	3	3x3	347	347V	6C	6' Prewired SEOWA Cord	NXWE	NX Fixture Module	SF	Single Fuse
				126L-880	880W, 90,000 lm	5K7	5000K, 70 CRI	4	4x4	480	480V	12C	12' Prewired SEOWA Cord	DMX	DMX/RDM	DF	Double Fuse
						57K7	5700K, 70 CRI	5	5x5							GL	Glass Lens
						4K8	4000K, 80 CRI	6	6x6								
						5K8	5000K, 80 CRI	AV	Aviation Optics ¹								
						57K8	5700K, 80 CRI										
						4K9	4000K, 90 CRI										
						5K9	5000K, 90 CRI										
					57K9	5700K, 90 CRI											
ACCESSORIES (ORDER SEPARATELY)															ACCESSORIES		
VFSVISOR												Top Visor					

¹ Includes glass lens

LUMINAIRE CONFIGURATIONS



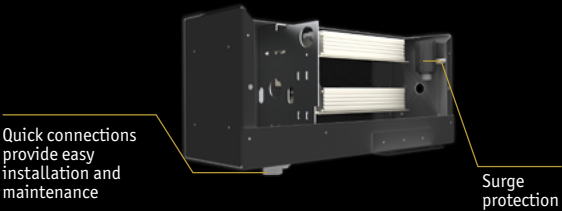
VAS - Arena Flood Sports Lighting

VAS		-		-		-		-		-		-		-		-			
SERIES		MOUNT		ENGINE-WATTS		CCT		DISTRIBUTION		VOLTAGE		FIXTURE TO DRIVER DISTANCE		CORD		CONTROL OPTIONS		OPTIONS	
VAS	Arena Sports Lighting	Y UMY	Yoke Under Mount Yoke	63L-440	440W, 45,000 lm	3K7	3000K, 70 CRI	2	2x2	277	277V	6C 6' Prewired SEOWA Cord 10C 10' Prewired SEOWA Cord	3C15	3' Prewired SEOWA cord 15A Plug	CD Continuous dimming NXWE NX Fixture Module DMX DMX/RDM	LGC Less Glare Control SF Single Fuse DF Double Fuse GL Glass Lens			
				84L-660	660W, 60,000 lm	4K7	4000K, 70 CRI	3	3x3	347	347V		3C20	3' Prewired SEOWA cord 20A Plug					
				126L-880	880W, 90,000 lm	5K7	5000K, 70 CRI	4	4x4	480	480V		6C15	6' Prewired SEOWA Cord 15A Plug					
						57K7	5700K, 70 CRI	5	5x5				6C20	6' Prewired SEOWA Cord 20A Plug					
						4K8	4000K, 80 CRI	6	6x6				12C15	12' Prewired SEOWA Cord 15A Plug					
						5K8	5000K, 80 CRI						12C20	12' Prewired SEOWA Cord 15A Plug					
						57K8	5700K, 80 CRI												
						4K9	4000K, 90 CRI												
						5K9	5000K, 90 CRI												
		57K9	5700K, 90 CRI																
ACCESSORIES (ORDER SEPARATELY)																			
														ACCESSORIES					
VFSVISOR														Top Visor					

LUMINAIRE CONFIGURATIONS



REMOTE DRIVER



Quick connections provide easy installation and maintenance

Surge protection

INTEGRATED CONTROLS

Embedded control solutions allow for hassle free energy savings and dynamic output at an individual fixture level. The three control solutions available for Intercept give sporting venues the ability to set a designated schedule, wirelessly adjust their light level, or even create theatrical lighting shows.

Functionality	Controls Solution	Wired	Wireless
Push Button Control	 DISTRIBUTED INTELLIGENCE	Yes	Yes
Theatrical Control	DMX/RDM System	Yes	



Hubbell Control Solutions’ NX Distributed Intelligence™ platform delivers a seamless lighting control solution. NX is capable of scaling from standalone fixture control to networked enterprise deployments. NX operates using wired, wireless and hybrid connectivity with native BACnet™ support.

NX can provide the perfect solution for push button control of the products lighting the field as well as the rest of the facility.

Truly Intelligent

The Hubbell Control Solutions NX Distributed Intelligence™ lighting control platform is the first of its kind to utilize a distributed network architecture (DNA) which provides users with unmatched system reliability, scalability and simplicity.

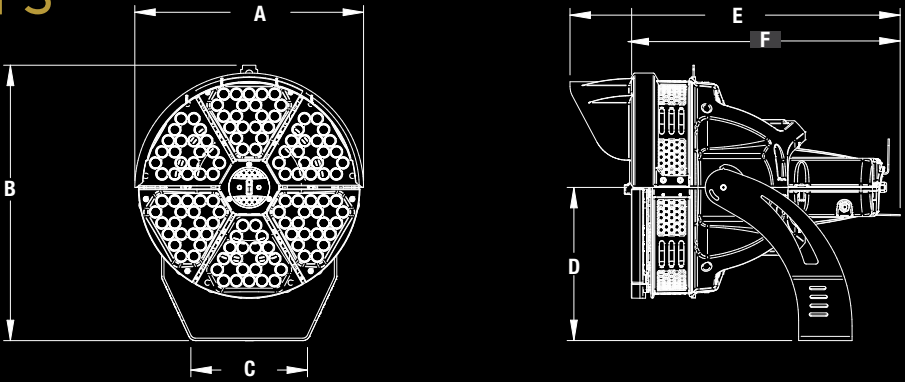
Versatile

NX supports indoor and outdoor applications, wired, wireless and hybrid networked lighting control deployments, and enables emerging applications such as Hubbell Lighting’s SpectraSync™ color tuning technology.

DMX is a common standard used in theatrical lighting that specializes in individual fixture control. This allows for complex sequences to be achieved with ease, resulting in an awestruck crowd. Intercept’s DMX compatibility gives you full control of the fixture’s dimming, allowing it to participate in the light show.

DIMENSIONS

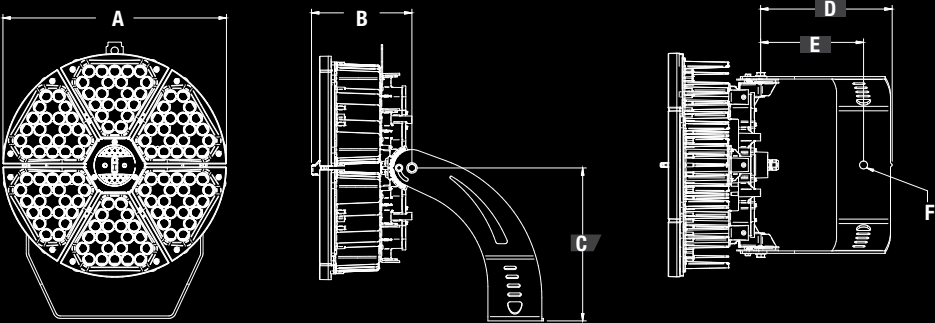
VFS



A	B	C	D	E	F	Weight	EPA
23.5"	28.3"	12.0"	15.6"	32.66"	26.32	100 lbs.	4.2
597 mm	719 mm	305 mm	401 mm	812 mm	668 mm	45 kg	Ft. ²

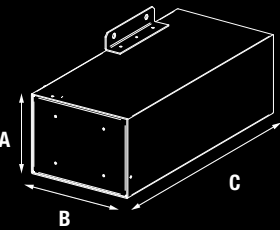
EPA with Visor 3.9 Ft.²

VAS



A	B	C	D	E	F	Weight
22.79"	10.24"	15.60"	13.42"	10.5"	.81	73 lbs.
578 mm	260 mm	396 mm	340 mm	266 mm	20 mm	33 kg

REMOTE DRIVER



A	B	C	Weight
9.5"	11.5"	21.5"	32 lbs.
241 mm	292 mm	546 mm	14.5 kg



ARCHITECTURAL AREA LIGHTING

BEACON PRODUCTS

COLUMBIA LIGHTING

COMPASS

DUAL-LITE

HUBBELL CONTROL SOLUTIONS

HUBBELL OUTDOOR LIGHTING

KIM LIGHTING

KURT VERSEN

LITECONTROL

PRESCOLITE



701 Millennium Blvd. Greenville, SC 29607
Tel 864.678.1000
www.hubbelloutdoor.com

HOL00342 5K July 20, 2021 9:30 AM

Copyright © 2021 Hubbell Outdoor Lighting, a division of Hubbell Lighting, Inc. All rights reserved.
Please refer to online specifications for most up-to-date content as specifications are subject to change without notice.
Due to our continued efforts to improve our products, product specifications are subject to change without notice.