

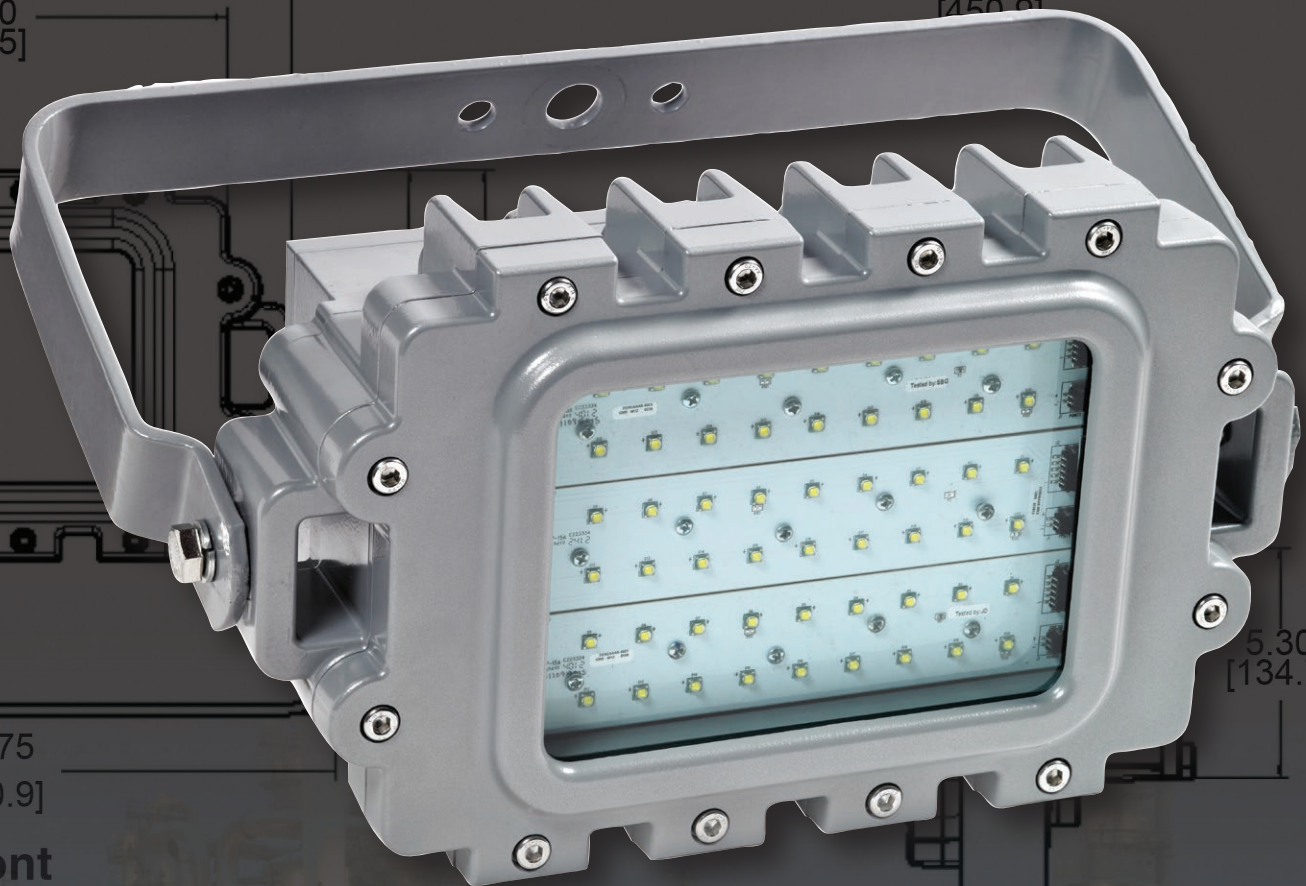


**KILLARK®**

# KF1L Series

## LED Technology

*for Harsh and Hazardous Environments*



**Front**

**Side**



## KF1L SERIES

# KILLARK

## C1D1 FLOOD – INTRODUCTION & LOGIC



## PETROBRIGHT® LED

### FEATURES-SPECIFICATIONS

#### Compliances

- UL-8750 for LED lighting
- ANSI/UL 1598A
- UL-844 Standard for lighting fixtures for hazardous locations, Class I, Division 1; Class II, Division 1; Class III
- CSA C22.2 no. 137-M1981 electric luminaires for use in hazardous locations
- Zone 1 and Zone 21 to IEC 60079-0, 60079-1, 60079-31, 60079-7 Standards
- Enclosed and gasketed
- Type 3, 4X
- IP66

#### Materials

- Body, end caps and lens frame corrosion resistant copper-free aluminum alloy with baked powder epoxy/polyester finish, electrostatically applied for complete, uniform corrosion protection
- All external hardware - stainless steel
- Thermal shock and impact resistant extra heavy-duty glass lens
- High temperature silicone gasketing
- Trunnion heavy gauge 316 SS

### LED Flood Features and Standards

Supplemental **20KA/10KV Surge Protection** is **standard** (for 120-277 VAC models)

- **Factory Sealed Construction**
- One 3/4" NPT & one M20 entry standard (see logic for other choices)
- Crisp White Light for Excellent Color Rendering – Chromaticity 5000 K (CCT); approx. 70 CRI
- Energy Savings – High lumens per watt
- LED Array Life – 100,000+ hours with 70% initial lumens
- Long Fixture Life – 50,000 - 55,000 maintenance free hours
- Instant On – Including after power interruption
- World Voltage 120 – 277VAC 50/60Hz
- Solder-LESS LED Board Connections – Vibration Resistant
- LT option for models needing IECEx, Zone 1, -50°C to +55°C suitability for hydrogen

Class I, Div. 1&2, Groups B,C,D  
Class I, Zone 1&2, Groups IIB+H2, IIA  
Class II, Div. 1&2, Groups EFG, Class III  
Enclosure Type 4X, IP66 (-50°C to +55°C)

cSP US File LR11713

IEC Ex Rated model (w/IEX or IEX4B suffix) Zone 1, Zone 21

Ex de IIB+H2 T6..T5, Gb, IP66

Tamb -20°C ≤ Ta ≤ +55°C; Option LT for  
-50°C ≤ Ta ≤ +55°C①

Ex de IIB T6..T5, Gb, -50°C ≤ Ta ≤ +55°C①

Ex tb IIIC T90°C Db, -50°C ≤ Ta ≤ +55°C①

IECEx Certificate  
CSA 14.0010

ATEX Certificate  
SIRA14ATEX1159X

Patent Pending  
Fixture  
Design



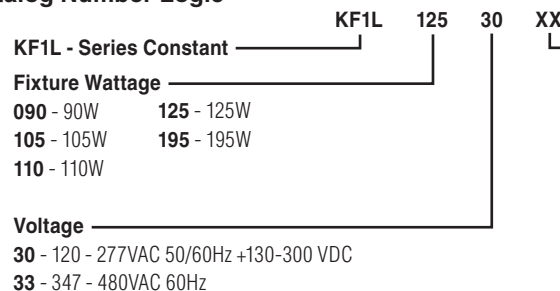
KF1L with KFS-6  
Slipfitter mount  
on 2" pipe



Dark Sky Visor  
KF1L-DARK

Suitable for Paint  
Spray

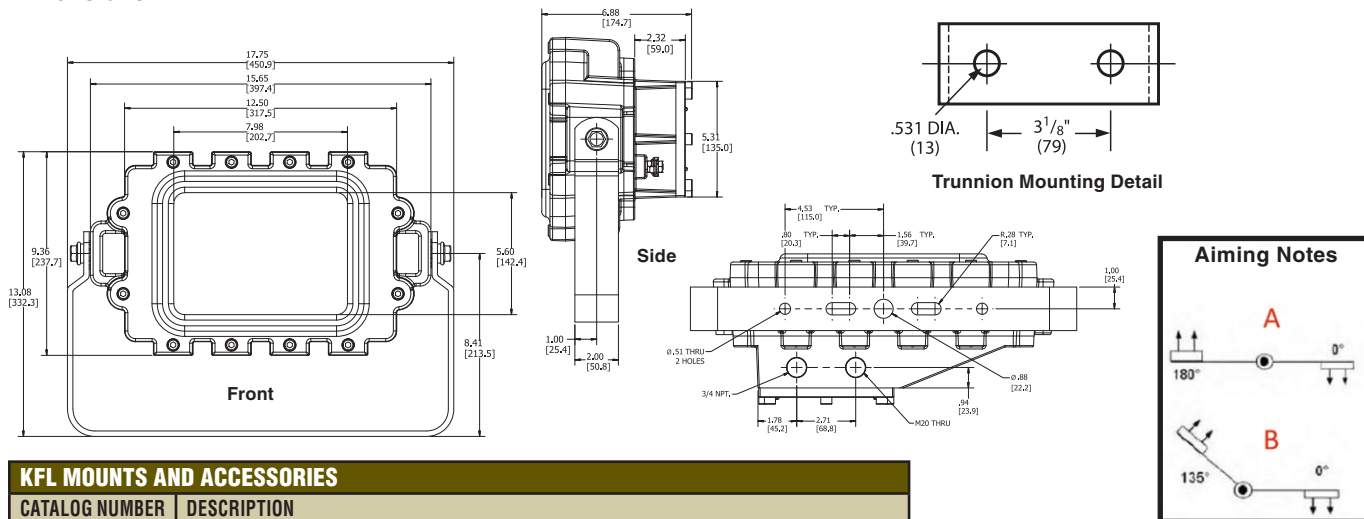
### Catalog Number Logic



### C1D1 FLOOD – ORDERING & TECHNICAL DATA

ORDERING INFORMATION AND AMBIENT SUITABILITY						C1D1		C2D1		IEC ZONE 1		IEC ZONE 21	
CATALOG NO.	WEIGHT LBS./KG	WATTS	VOLTAGE	AMPS	DELIVERED LUMENS	40°C	55°C	40°C	55°C	40°C	55°C	40°C	55°C
KF1L09030	46.00 / 20.87	90	120-277VAC	0.72-0.31	7182	T6	T6	(EFG)	Limited Aiming B	T6	T5	160-75	175-90
KF1L09033			347-480VAC	0.25-0.18									
KF1L09034			120-250VDC	0.72-0.28									
KF1L10530		105	120-277VAC	0.85-0.37	8362	T6	T6	(EFG)	Limited Aiming B	T6	T5	160-76	175-91
KF1L10533			347-480VAC	0.29-0.21									
KF1L10534			120-250VDC	0.85-0.33									
KF1L11030		110	120-277VAC	0.95-0.41	10590	T6	T6	(EFG)	Limited Aiming B	T6	T5	160-77	175-92
KF1L11033			347-480VAC	0.33-0.24									
KF1L11034			120-250VDC	0.95-0.37									
KF1L12530		125	120-277VAC	1.10-0.48	11590	T6	T6	(EFG)	Limited Aiming B	T6	T5	160-78	175-93
KF1L12533			347-480VAC	0.38-0.28									
KF1L12534			120-250VDC	1.10-0.43									
KF1L19530		195	120-277VAC	1.63-0.70	15707	T5	-	-	-	T5	-	-	-

### Dimensions



KFL MOUNTS AND ACCESSORIES	
CATALOG NUMBER	DESCRIPTION
KFS-6	Steel Slipfitter for 2" Pipe (2-3/8" o.d.) Tenon. Slips 3.75" Over Pipe
KFCB	Heavy Duty Cast-Iron Crossarm Fitting for Horizontal Trunnion
KFWB	Heavy Duty Wall Mount and/or Pipe Clamp Fitting Clamps 2" Pipe (2-3/8" o.d.) Through 2-1/2" Pipe (2-7/8" o.d.)
K4040	Heavy Duty Steel Wall Bracket. (Must be with KFCB Crossarm Fitting)
4041	Heavy Duty Steel Wall Bracket 2" Pipe (2-3/8" o.d.) Tenon Fitting
KFLG	Wire Guard, 316 Stainless Steel
VMSC10	10' Stainless Steel Safety Cable with loop grip
KF1L-DARK	Dark Sky Visor, White Painted Aluminum
KF1L-DOOR	Replacement Door and Lens Assembly

### CABLE GLAND ORDERING OPTIONS

CATALOG NUMBER	ENTRY THREAD SIZE (NPT)	CABLE ACCEPTANCE DETAILS	
		DIAMETER 'C'	
		MIN.	MAX.
MCX1B	1/2"	0.51" (13.0)	0.63" (16.0)
MCX1C	1/2"	0.60" (15.2)	0.82" (20.8)
MCX2	3/4"	0.73" (18.5)	1.03" (26.2)

For entire series, please see [www.hubbell-killark.com](http://www.hubbell-killark.com)







# **CERTI*LITE*® DESIGN**

## **LIGHTING DESIGN SOFTWARE**

Copyright ©2014 All Rights Reserved

- **Modern “Ribbon” Windows Interface with “Real Time” Calculations**
- **Easily import/export of CAD files (DWG/DXF/PDF)**
- **Enhanced photometric database with luminaire images and wireframes**
- **Ability to draw round or complex rooms and grids**
- **False Colors to indicate “Relative Brightness”**

See “Lighting Software link” at [www.hubbell-killark.com](http://www.hubbell-killark.com) to download

HKSB-KF1L 03-19 © Killark, 2019

# **KILLARK®**

**Hubbell Killark**  
2112 Fenton Logistics Park Blvd. • Fenton, MO 63026  
Phone: (314) 531-0460 • Fax: (314) 531-7164  
[www.hubbell-killark.com](http://www.hubbell-killark.com)

