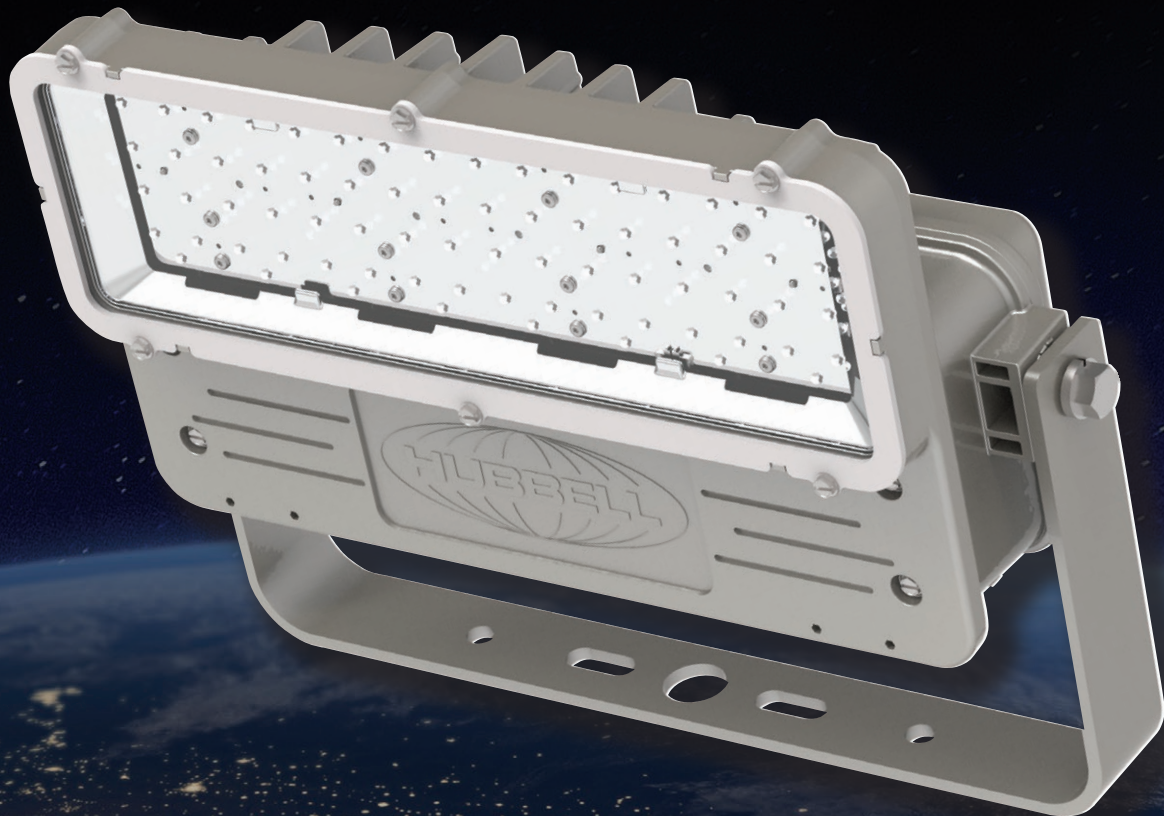


KILLARK®

KFL-X

Next-Generation Floodlight

for Harsh and Hazardous Environments



www.hubbell-killark.com



Harsh & Hazardous

KFL-X

PETRO*BRIGHT*®



Class I, Div. 2, Groups A,B,C,D
Class II, Div. 1&2, Groups EFG
Class III

Suitable for wet locations
Marine Rated (US Only)

Type 3, 4X

IP66

Tamb -50°C to +65°C

(Pending)

Zone 2 and Zone 21 areas

Ex ec IIC T6...T3, Gc

Ex op is tb IIC T160°C Db

Tamb -50°C to +65°C

CATALOG LOGIC

KFL **30** **iE1** **30** **—** **3070**

KFL Series

Lumen Output

7 – 7,000 lumens
10 – 10,000 lumens
14 – 14,000 lumens
20 – 20,000 lumens
30 – 30,000 lumens

Emergency

iE05 – 500 lumens during 180 minute emergency*
iE1 – 1000 lumens during 90 minute emergency*

Voltage

30 – 120-277 VAC 50/60 Hz (all models)
33 – 347-480 VAC 50/60 Hz (non emergency models only)
34 – 125-250 VDC; 120-277 VAC 50/60 Hz (non emergency models)

Logic Options

3070 – 3000K CCT & 70 CRI LEDs
Turtle – Amber LEDs**
Px – Photocell
SY – Stainless Steel Yoke
PL – Polycarbonate Lens
PM – Pole Mount

Optics (not available on 30,000 lumens)

Blank – no supplemental optics
W – Wide
S – Spot
P – Perimeter

* Only available on 7 and 14 lumen outputs

** Only available on 30K output

LED COLOR OPTIONS



5000K

Crisp white light maximizes the output of the LEDs with a color that is equivalent to noontime sun



3000K

Warm white light that is similar in color to a soft white incandescent



AMBER

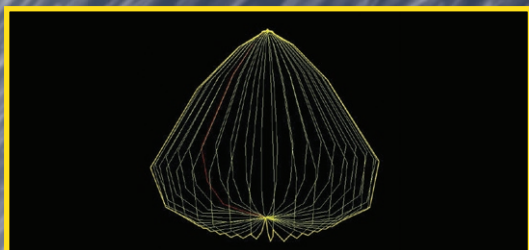
Pure Amber LEDs have zero energy in the blue light spectrum that is designed as a marine life friendly option for coastal regions

INTELLIGENT BATTERY BACKUP

- Self-diagnostic monitoring
- Automatic Self-Testing
- Fixture health status indication
- User initiated Self-Test
- 15 minute delay once power is restored
- Automatic unit transfer in brown-out conditions

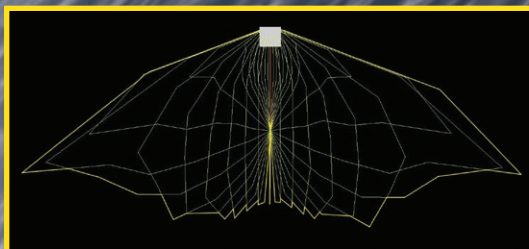


OPTIC OPTIONS



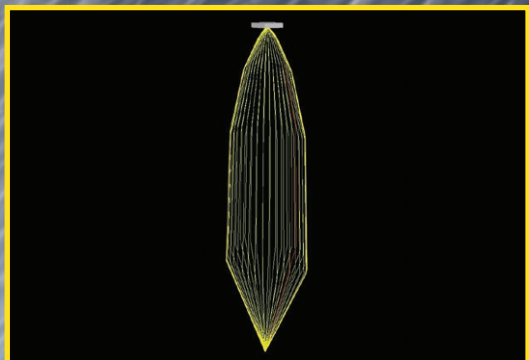
Normal

Delivers evenly distributed light, perfect for a general area lighting with normal mounting heights.



Perimeter

This optic was designed specifically for the needs of perimeter lighting. This asymmetric beam pattern offers a low and wide distribution that is perfect for illuminating fence lines



Spot

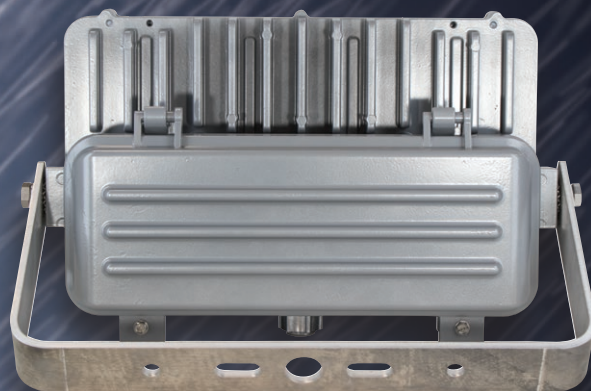
Offers high lumen density at taller mounting heights, perfect for focused lighting areas.

MOUNTING OPTIONS



Pole Mount

1 ¼" and 1 ½" NPT Pipe
Tilt-aim allows for precise illumination when the KFL-X is mounted on the end of a pole



Yoke

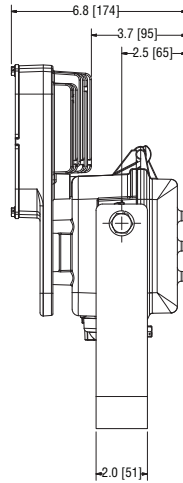
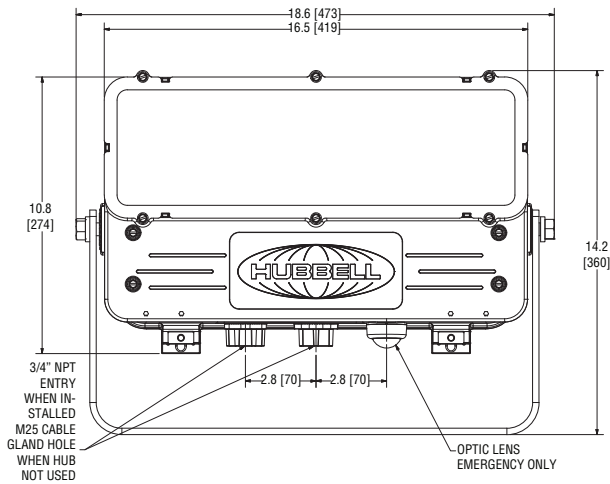
Standard mounting for KFL-X floodlight



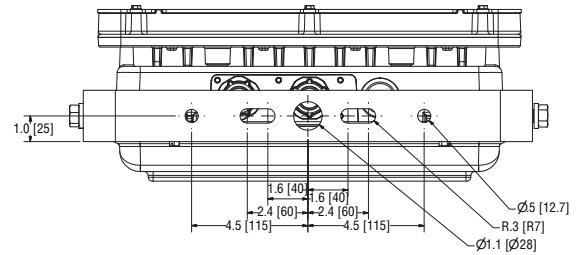
Jib Crane

Auto-leveling with shock-absorber, and vibration isolators designed for the demands of luminaires mounted to jib cranes

DIMENSIONS



Housing Material: Copper-Free Aluminum
 Finish: Powder Epoxy Painted
 External Hardware: 316 Stainless Steel
 Weight: 25lbs (11.3kgs)



GLOBAL



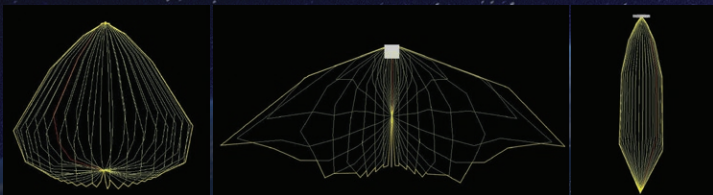
Quad Approvals for NEC/CEC/IECEx/ATEX
 -50°C to +65°C ambient rated

INTELLIGENT



Intelligent Battery backup with built in
 self-monitoring & testing

VERSATILE



Vast Range of Optics including spot & wide
 options

EASY INSTALL



Clamshell splice box for easy and unimpeded
 wiring access



KILLARK®

2112 Fenton Logistics Park Blvd.
Fenton, MO 63026
TEL: (314) 531-0460 FAX: (314) 531-7164
www.hubbell-killark.com • killarkinfo@hubbell.com

Hubbell Canada LP
870 Brock Road South
Pickering, Ontario L1W 1Z8
(905) 839-1138
infohclp@hubbell-canada.com

Hubbell Products Mexico
Calle 5 Sur No. 105 Col. Parque
Ind. Toluca 2000
Toluca Edo. Mex. CP 50200
Tel: (01 52) 559-151-9999
info@hubbell.com.mx

Hubbell® Construction and Energy

A Division of Hubbell, Inc.
HKPR-KFLX 10-19 © Killark, 2019