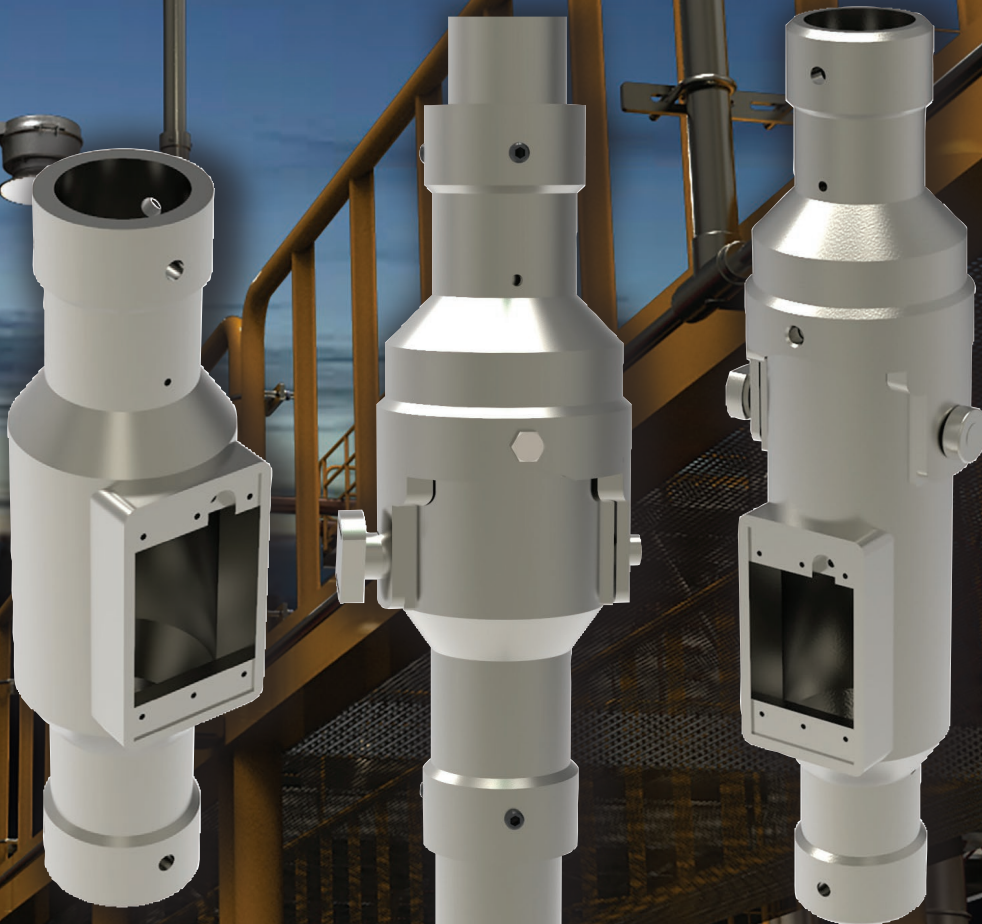


# KILLARK®

## Spartan Pole Series

### A New Lighting Retrieval Solution

*For All Industrial Applications*



[www.hubbell-killark.com](http://www.hubbell-killark.com)



Harsh & Hazardous

In today's industrial market, replacing or retrofitting light fixtures can be a tasking and time-consuming exercise. The Spartan Pole series is here to offer a solution.

The Spartan Pole allows for a safe and easy access to pole mounted light fixtures through its ability to retract for service. Lowering the fixture to a serviceable level, rather than travelling up to the fixture, alleviates the need to rent or purchase the expensive fall arrest or lift systems required to comply with OSHA/HSE working height standards.

## FEATURES:

- **SAVE MONEY and TIME** on new or existing installs
- **Retrofittable** to existing stanchion poles – No need to replace conduit
- Spartan Hinge and Hinge JB is designed with a mechanical **Cam System** for effortless exertion bringing light to safe working level
- Spartan Coupler and Hinge JB design allows for device box mounting options and eye level splicing
- Certified and tested to 250mph wind speeds
- **Weep hole** allows for a Type 3R rating
- Rated to hold up to 50lb fixtures





Killark VM LED series with 90- or 25-degree stanchion mounting options for various optics

Spartan Pole Series can be rotated 360° to accommodate the desired 90° bend if spacing is limited

Cam shaft design for effortless lowering positioning. The smooth beveled stock ensures no kinking of wiring

1-1/2" top and bottom conduit

Spartan drops 90°

Various mounting brackets available

Customize your pole solution with the patented TET fitting allowing unimpeded access to wire splicing and pulling

# CATALOG LOGIC:

DETAILS			10 FOOT POLE		8 FOOT POLE	
PRODUCT NUMBER	FINISH	WEIGHT	PRODUCT NUMBER W/ POLES	WEIGHT	PRODUCT NUMBER W/ POLES	WEIGHT
<b>SPARTAN HINGE</b>						
H-AL	Aluminum	4lbs (2kg)	H-AL-10	14lbs (7kg)	H-AL-08	12lbs (6kg)
H-HG	Galvanized FE	9lbs (4.5kg)	H-HG-10	36lbs (16.5kg)	H-HG-08	30lbs (14kg)
H-SS	316 Stainless	9lbs (4.5kg)	H-SS-10	36lbs (16.5kg)	H-SS-08	30lbs (14kg)
PRODUCT NUMBER	FINISH	WEIGHT	PRODUCT NUMBER	WEIGHT	PRODUCT NUMBER	WEIGHT
<b>SPARTAN HINGE JB</b>						
HJB-AL	Aluminum	15lbs (7kg)	HJB-AL-10	14lbs (7kg)	HJB-AL-08	13lbs (7kg)
HJB-HG	Galvanized FE	39lbs (4.5kg)	HJB-HG-10	36lbs (17kg)	HJB-HG-08	33lbs (15kg)
HJB-SS	316 Stainless	39lbs (4.5kg)	HJB-SS-10	36lbs (17kg)	HJB-SS-08	33lbs (15kg)
<b>SPARTAN COUPLER</b>						
CJB-AL	Aluminum	2lbs (1kg)	CLB-AL-10	12lbs (6kg)	CJB-AL-08	10lbs (4.5kg)

Trade Size 1-1/2" Shed. 40 (40mm)

Poles are 4ft on bottom

## The Spartan Hinge

designed to assist in lowering stanchion poles for retrofitting or servicing lighting fixtures or other pole mounted devices.

## The Spartan Hinge JB

equipped with a combination of a device box opening and the Spartan hinge cam system for lower a stanchion pole.

## The Spartan Coupler

equipped with a device opening capable of mounting various operator and switch covers and aids in pulling and splicing wires.



# CUSTOMIZE YOUR SPARTAN

Save installation time and money by customizing your Spartan Pole! Ships complete and assembled for green or brown field sites!

## SPARTAN VC

**H** **AL** - **0** - **08** **AL** - **Y** - **01** - **TET** - **25**

### Spartan Pole Fitting

- H** – Hinge
- HJB** – Hinge JB
- CJB** – Coupler

### Material

- AL** – Aluminum
- SS** – Stainless Steel
- HG** – Galv. Iron

### Cover:

(Only for CJB & HJB)

- 0** – No FS Cover
- 1** – FS Blank Cover w/ Gasket AL

### Pole Height

- 00** – No Pole
- 04** – 4ft Top Only
- 06** – 6ft Top Only
- 08** – 8ft (4ft Top & Bottom)
- 10** – 10ft (6ft Top & 4ft Bottom)

### Pole Material

- AL** – Aluminum
- SS** – Stainless Steel
- HG** – Steel

### Lighting Stancion Mounts

- 00** – None
- 25** – VMD5B 25°
- 90** – VMS5B Straight (90°)

### Bottom Pull/Termination Fitting

- 000** – None
- TET** – (Top Entry T Fitting)
- FM5** – Form 5 1-1/2" Conduit Body
- FM7** – Form 7 1-1/2" Conduit Body
- PL5** – Nonmetallic Terminal Box

### Brackets

(Brackets are Galv. Steel)

- 00** – None
- 01** – Universal L with Tublar U bolts
- 02** – Universal L with Angled bolt
- 03** – Wall Mount
- 04** – Floor Mount
- 05** – PL Box Bracket

\*Stainless Steel contact Factory

### Cable:

(cable is standard 12/3 AWG)

- N** – No Cable
- Y** – Cable Length Determined by Pole Height Requested



**KILLARK®**

2112 Fenton Logistics Park Blvd.  
Fenton, MO 63026  
TEL: (314) 531-0460  
[www.hubbell-killark.com](http://www.hubbell-killark.com) • [killarkinfo@hubbell.com](mailto:killarkinfo@hubbell.com)

**Hubbell Canada LP**  
870 Brock Road South  
Pickering, Ontario L1W 1Z8  
(905) 839-1138  
[infohclp@hubbell-canada.com](mailto:infohclp@hubbell-canada.com)

**Hubbell Products Mexico**  
Calle 5 Sur No. 105 Col. Parque  
Ind. Toluca 2000  
Toluca Edo. Mex. CP 50200  
Tel: (01 52) 559-151-9999  
[info@hubbell.com.mx](mailto:info@hubbell.com.mx)

**Hubbell® Construction and Energy**

A Division of Hubbell, Inc.  
HKPR-SPARTAN 05-21 © Killark, 2021