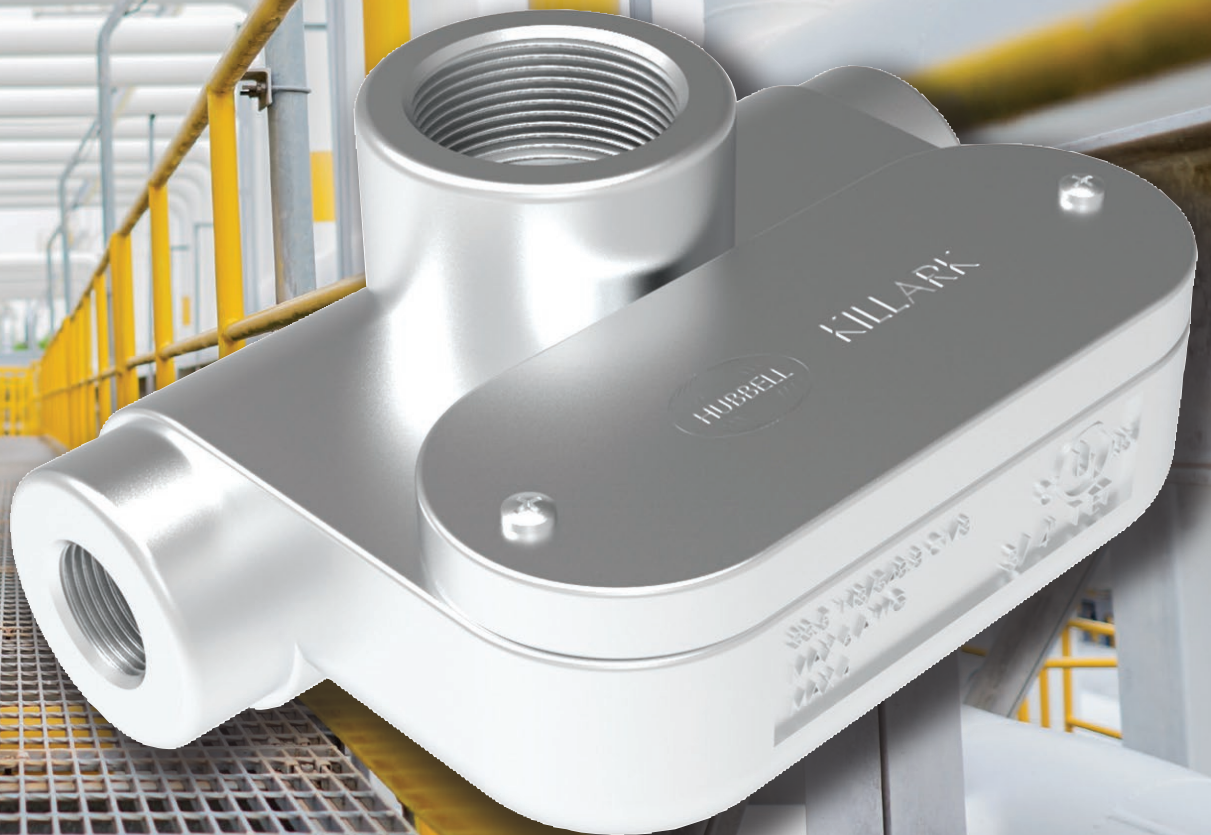


KILLARK®

TET Series

Innovative Conduit Fitting

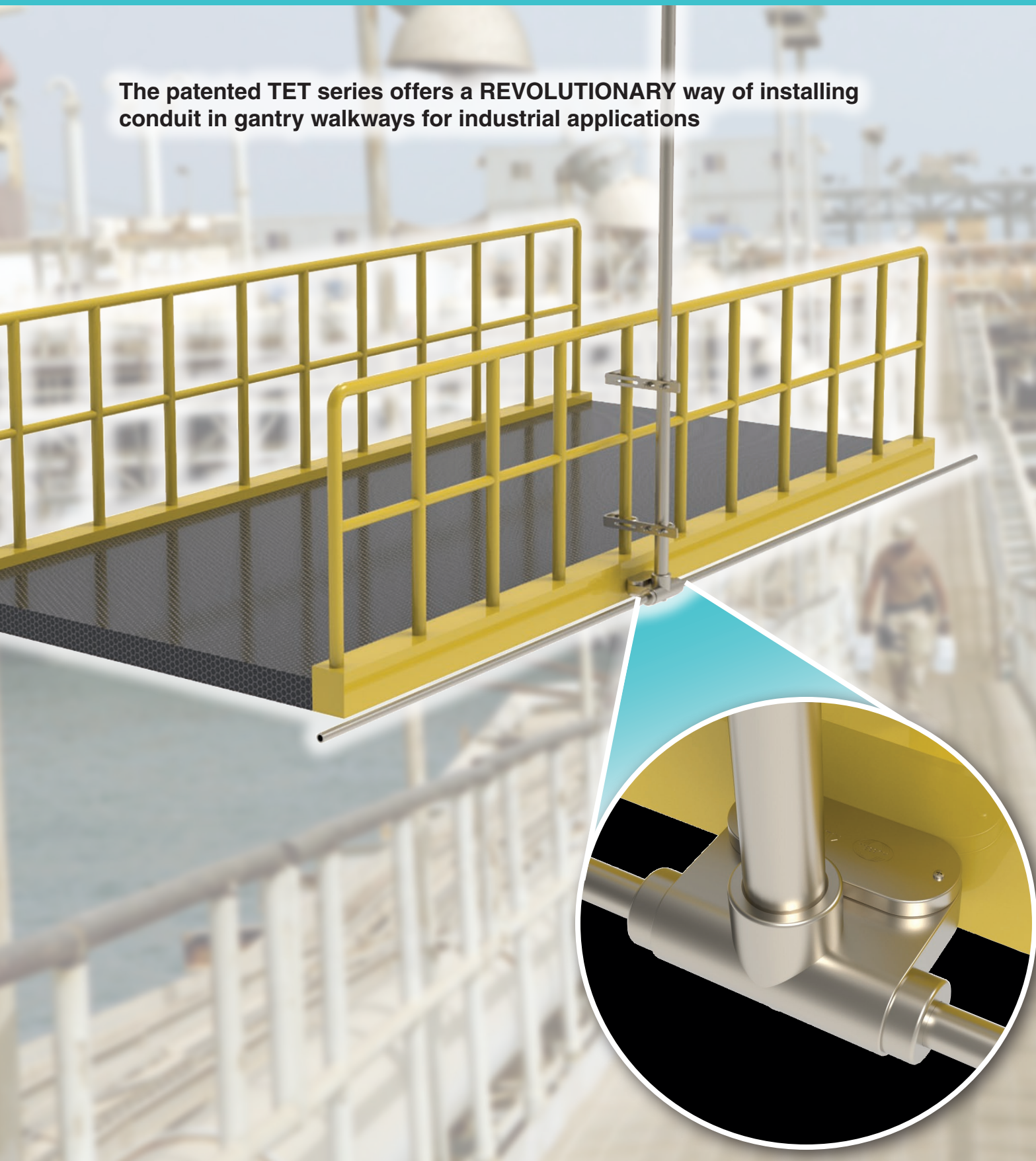
For All Industrial Applications



www.hubbell-killark.com



The patented TET series offers a REVOLUTIONARY way of installing conduit in gantry walkways for industrial applications



Killark's unique Top Entry T or "TET" fitting offers a safe way to install an electrical conduit body with unimpeded access for future maintenance or expansion projects for gantry walkways. This patented design allows the access point to remain unblocked for the life of the electrical run and even allows for conductor pull for unrelated product, like light fixtures. The TET fitting is future proof and is the safest means for your electrical system.

FEATURES:

- Safer to Install for future access during maintenance
- Pull through for non-related products
- Future Proof –unable to block during expansion projects
- cULus certified and Type 4X approved
- Includes stainless steel cover and neoprene gasket
- Tapped drain/breather hole available

MATERIAL:

- Body – 316 Stainless Steel or Aluminum
- Gasket – Neoprene
- Covers/Screws– 316 SS
- Finish – Natural
- Brackets – 316 Stainless Steel



CONDUIT MOUNTING CLAMPS

Installing the traditional T conduit body leaves the installer with impaired viewing access to pull conductors and leaves the access cover exposed for future expansions

Features:

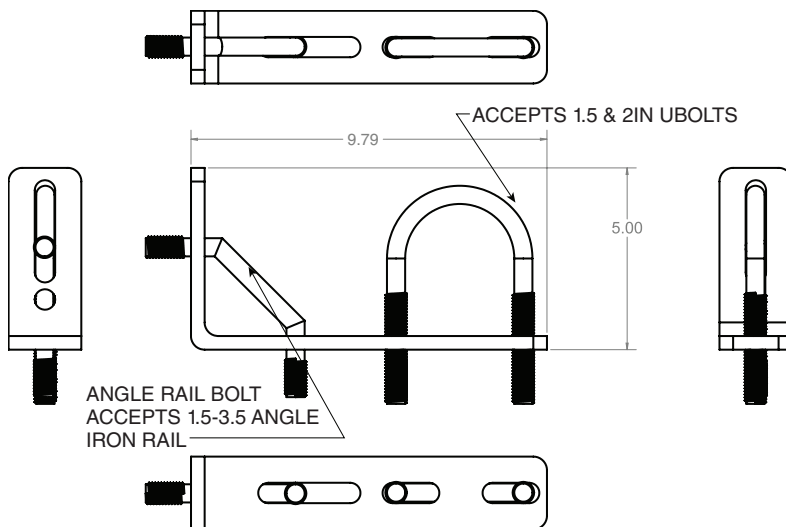
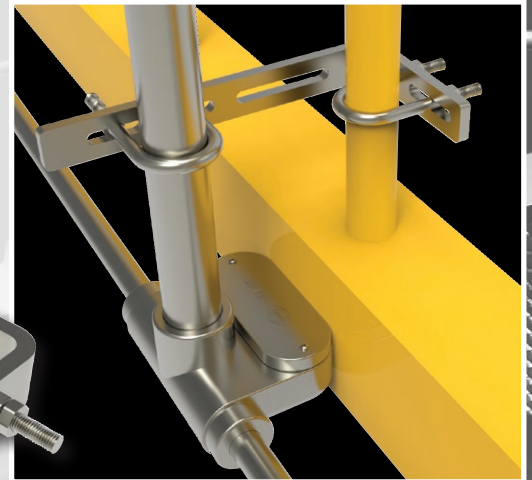
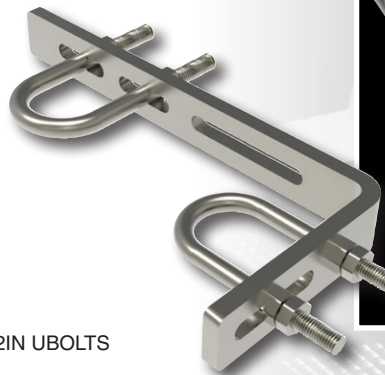
- For Tubular and Angle Stanchion Mounting of Light Poles and Instruments for Stair and Walkway Rails
- High Vibration Installation
- Includes bolts, nuts and washers

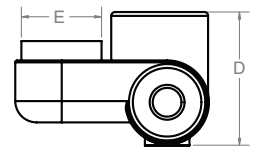
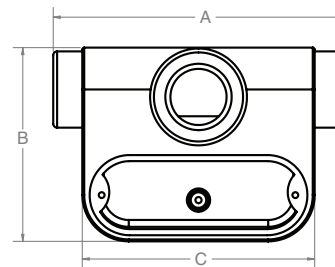
MOUNTING BRACKETS		
CATALOG NUMBER	FINISH	TYPE OF BRACKET
MHK-RTG	Steel	Tubular (rounded)
MHK-RAG	Steel	Angular
MHK-RTS	Stainless Steel	Tubular (rounded)
MHK-RAS	Stainless Steel	Angular

Angled



Tubular





TET CONDUIT BODY

CATALOG NUMBER	HUB SIZE		FINISH	ACCESSORIES	A	B	C	D	E	VOLUME
	TOP	SIDES								
TET15075A	1-1/2"	3/4"	Aluminum	N/A	7.5	5	6	3.44	2.07	33.5 in3 (548.8 cm3)
TET15075AD	1-1/2"	3/4"	Aluminum	Drain	7.5	5	6	3.44	2.07	33.5 in3 (548.8 cm3)
TET15075ABD	1-1/2"	3/4"	Aluminum	Drain/Breather	7.5	5	6	3.44	2.07	33.5 in3 (548.8 cm3)
TET15075SS	1-1/2"	3/4"	Stainless Steel	N/A	7.5	5	6	3.44	2.07	33.5 in3 (548.8 cm3)
TET150150SS	1-1/2"	1-1/2"	Stainless Steel	N/A	7.5	5	6	3.44	2.07	33.5 in3 (548.8 cm3)
TET100100SS	1"	1"	Stainless Steel	N/A	7.5	5	6	3.44	2.07	33.5 in3 (548.8 cm3)
TET07575SS	3/4"	3/4"	Stainless Steel	N/A	7.5	5	6	3.44	2.07	33.5 in3 (548.8 cm3)



KILLARK®

2112 Fenton Logistics Park Blvd.
Fenton, MO 63026
TEL: (314) 531-0460
www.hubbell-killark.com • killarkinfo@hubbell.com

Hubbell Canada LP
870 Brock Road South
Pickering, Ontario L1W 1Z8
(905) 839-1138
infohclp@hubbell-canada.com

Hubbell Products Mexico
Calle 5 Sur No. 105 Col. Parque
Ind. Toluca 2000
Toluca Edo. Mex. CP 50200
Tel: (01 52) 559-151-9999
info@hubbell.com.mx

Hubbell® Construction and Energy

A Division of Hubbell, Inc.
HKPR-TET 09-20 © Killark, 2020