

# KILLARK®

## VTR LED Retrofit *for Hazardous Location Environments*



[www.hubbell-killark.com](http://www.hubbell-killark.com)

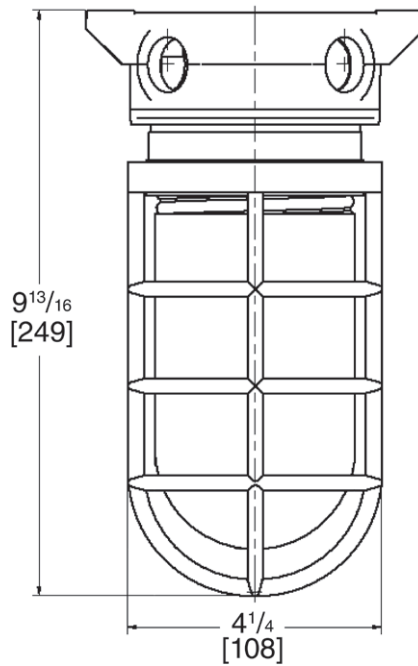


Harsh & Hazardous

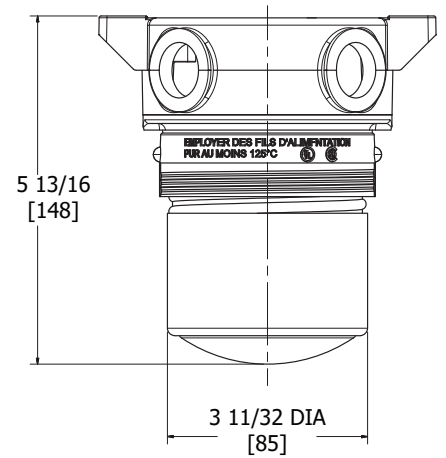


## DIMENSIONS

OLD

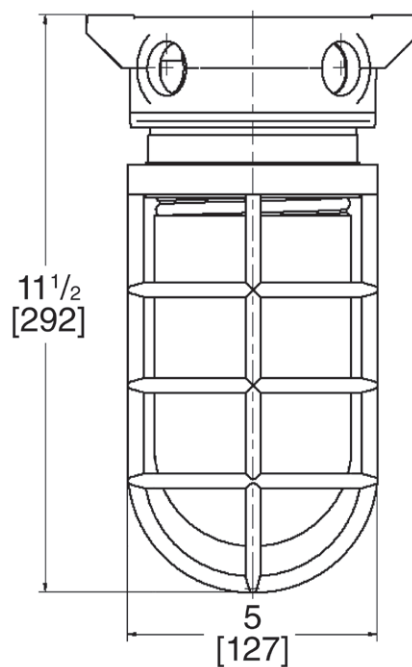


NEW

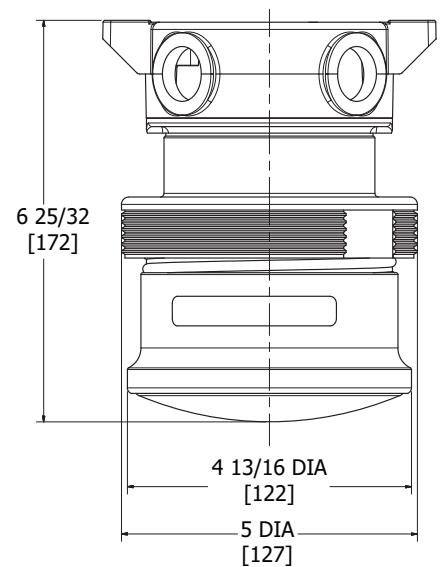


**VTR-1**

OLD



NEW



**VTR-2**

# VTR

## Vapor Tight LED Retrofit



Class I, Div. 2, Groups A, B, C, D  
Class I, Zone 2, Groups IIC, IIB, IIA  
Class II, Div. 2, Groups F, G  
Class III  
Suitable for wet locations  
Type 3, 4X

VTR-1	VTR-2	
120V		Voltage
1085	2100	Lumen Output
9W	18W	Wattage
99k Calculated L70		LED Life



## Universal Retrofit

Compatible with Cooper Crouse-Hinds, Appleton, Thomas & Betts, and Killark



## Saves Time

Installs in less than 60 seconds



## Saves Money

Energy efficient LED uses 90% less power than conventional lighting fixtures



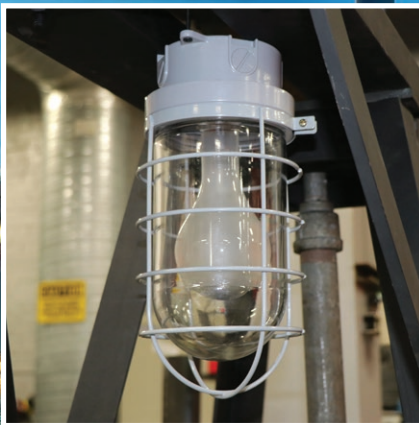
## Easy Install

No tools required for installation

# Easy as...

1

remove



2

connect



3

enjoy





**KILLARK®**

2112 Fenton Logistics Park Blvd.  
Fenton, MO 63026  
TEL: (314) 531-0460  
[www.hubbell-killark.com](http://www.hubbell-killark.com) • [killarkinfo@hubbell.com](mailto:killarkinfo@hubbell.com)

**Hubbell Canada LP**  
870 Brock Road South  
Pickering, Ontario L1W 1Z8  
(905) 839-1138  
[infohclp@hubbell-canada.com](mailto:infohclp@hubbell-canada.com)

**Hubbell Products Mexico**  
Calle 5 Sur No. 105 Col. Parque  
Ind. Toluca 2000  
Toluca Edo. Mex. CP 50200  
Tel: (01 52) 559-151-9999  
[info@hubbell.com.mx](mailto:info@hubbell.com.mx)

**Hubbell® Construction and Energy**

A Division of Hubbell, Inc.  
HKPR-VTR 11-19 © Killark, 2019