



LIGHTING



KILLARK®

VML-X Series

Hazardous Location Luminaries
Class 1, Division 2, Zone 2

WML-X Series

Wet Location Luminaries



VML-X:

Class I, Div. 2, Groups A,B,C,D
Class I, Zone 2, Groups IIC, IIB, IIA
Class II, Div. 1 & 2, Groups E,F,G
Class III

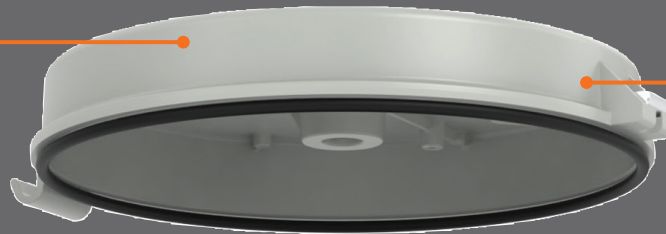
The Next Generation of Human-Centric Lighting is Here

WML-X:

Suitable for wet locations
Type 3, 4X
IP66
Marine Rated (US only)

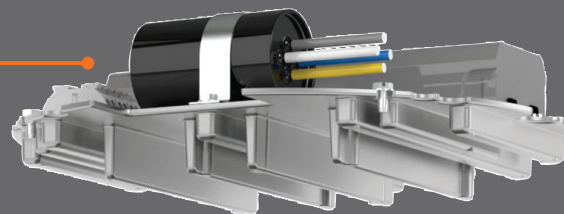
Killark's globally certified VML-X & WML-X series are engineered and manufactured for your safety.

Same mounts as the legacy Killark VM Series for easy retrofitting



Single-point closing with barrel nut allows one-handed operation for quick and easy installation

Cage clamp terminals with loop-in/loop-out functionality install faster



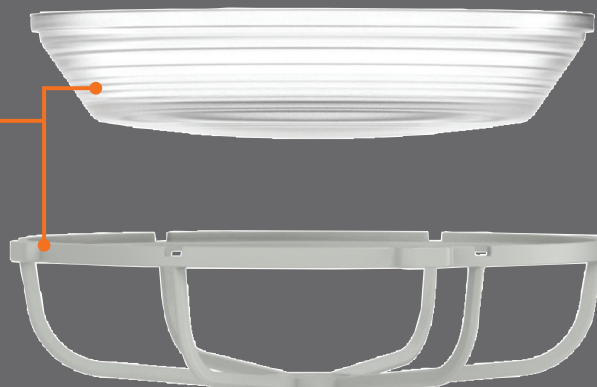
Separate driver plate for thermal separation improves driver life

Optional pre-installed optics to provide various optical patterns, putting illumination where needed



3 unique tank sizes for lumen output optimization, footprint reduction, and heat dissipation

Globe and guard already installed, reducing installation costs



Quality products that perform reliably in the most demanding applications

Identify the area light fixture to match your specification. It's easy!

VML **3** **X** **28** **iE** **30** **A** **2** **5W** **G** **PC**

Series Constant:

- VML** - Hazardous Location Rated
- WML** - Non-Hazardous/ Wet Location Rated

Tank Size:

- 1** - Small (5000, 7000, 9000 lm)
- 2** - Medium (12000, 15000, 18000 lm)
- 3** - Large (23000, 28000 lm)

Fixture Lumen Output in 1000s of Lumens:

- 5** - 5000 lm
- 7** - 7000 lm
- 9** - 9000 lm
- 12** - 12000 lm
- 15** - 15000 lm
- 18** - 18000 lm
- 23** - 23000 lm
- 28** - 28000 lm

Battery Backup (Optional):

- iE05** - 500 lumens (180 min.)
- iE1** - 1000 lumens (90 min.)

**Only on 5, 7, 9, & 12 lumen output options*

Voltage - Input Supply:

- 30** - 120 thru 277 VAC, 50/60Hz
- 33** - 347 thru 480 VAC, 50/60 Hz
- 34** - 105 thru 250 VDC

Mounting Splice Box:

- blank** - No splice box provided
- A** - Pendant (VMA2B, VMA3B)
- B** - Wall (VMB2B, VMB3B)
- X** - Ceiling (VMX2B, VMX3B, VMX6B, VMX7B, VMX8B, VMX9B)
- C** - Cone (VMC2B, VMC3B)
- D** - Stanchion 25° (VMD4B, VMD5B)
- S** - Stanchion 90° (Straight) (VMS4B, VMS5B)

Entry Size:

- blank** - No splice box
- 2** - 3/4" NPT
- 3** - 1" NPT
- 4** - 1-1/4" NPT
- 5** - 1-1/2" NPT
- 6** - 3/4" NPT (5 hubs)
- 7** - 1" NPT (5 hubs)
- 8** - M20 (Metric - 4 hubs)
- 9** - M20 (Metric - 5 hubs)

Options:

- PC** - Polycarbonate lens (Glass Globe standard)
- YYZZ** - White LED Chromaticity where YY= Correlated Colour Temperature (CCT) minimum 3000K; ZZ = Colour Rendering Index (CRI) maximum 95 (No value=Standard 5000K CCT 70 CRI minimum)
- AMBER** - Amber coloured LEDs primarily used to help protect marine wildlife
- PCAMBER** - Phosphate Coated Amber coloured LEDs
- GREEN** - Green coloured LEDs primarily used to help protect migratory birds
- AR** - Angled Reflector
- DR** - Dome Reflector
- HA** - High Ambient: bigger tank with lower wattage fixture for use in higher ambient
- Px** - Photocell factory installed
 - 1** = 120VAC
 - 2** = 208-277VAC
 - 3** = 347VAC
- SP** - Add supplemental Surge Protection
- F** - Single Fuse
- FF** - Double Fuse
- CISPR** - CE Marked driver
- xH** - Optional Paint (i.e. RH = Red Housing)

Guard:

- G** - With Guard

Optics:

- blank** - Type 5 - No optics
- 5W** - Type 5 - Wide (Up to 18000 lm)
- T1** - Type 1 (Up to 9000 lm)
- T3** - Type 3 (Up to 9000 lm)

An extensive range of certified configurations on the market

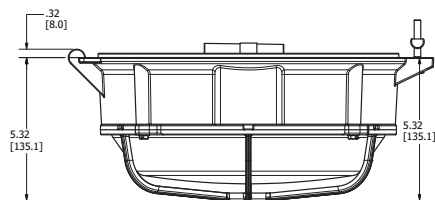
Battery Backup Functionality

- Self-diagnostics monitors LED status, LED driver circuit, battery capacity and charger function and displays any fault detection by means of a flashing code
- Self-test feature automatically runs a 1 minute test once a month and an alternating 30-60 minute test once every 6 months. LED indicator provides visible fault detection and charging status
- User-initiated 1- or 90-minute system test feature
- 15 minute re-transfer delay
- Automatic unit transfer in brown-out conditions (below 80% of nominal AC input voltage)
- 90- or 180-minute runtime options



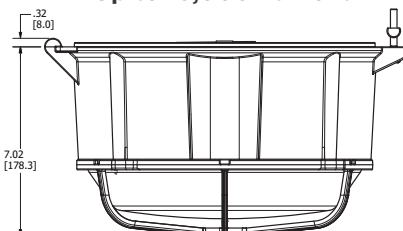
Optional self-testing emergency battery backup

Up to 9,000 Lumens



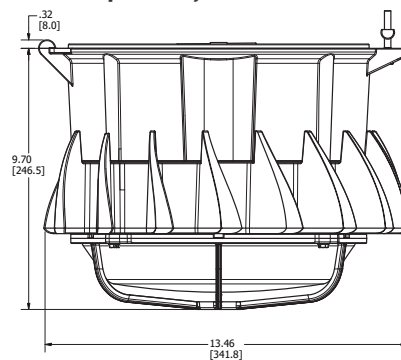
Size 1

Up to 18,000 Lumens



Size 2

Up to 28,000 Lumens



Size 3

Delivered Lumens

Catalogue Number	Glass Globe									Polycarbonate
	5000K 70CRI LEDs	Type 5 Wide Optic	Type 3 Optic	Type 1 Optic	Angled Reflector	Dome Reflector	Green LED	Amber LED	3000K 80CRI LEDs	Clear Globe
VML1X5(XX)(YY)	5295	5002	4803	4868	4560	4802	3694	1890	4871	5353
VML1X7(XX)(YY)	7101	6708	6441	6528	6116	6440	4030	—	6532	7179
VML1X9(XX)(YY)	9884	9338	8966	9087	8513	8964	4368	—	9093	9992
VML2X12(XX)(YY)	14046	13305	—	—	12049	12645	7005	2859	12922	14200
VML2X15(XX)(YY)	16359	15496	—	—	14033	14727	7642	—	15050	16538
VML2X18(XX)(YY)	18733	17745	—	—	16070	16865	—	—	17234	18939
VML3X23(XX)(YY)	23090	—	—	—	19807	20787	—	—	21242	—
VML3X28(XX)(YY)	28275	—	—	—	24424	25446	—	—	26013	—

When Light Matters, VML-X or WML-X Is Your Solution

Type I Optic Pattern

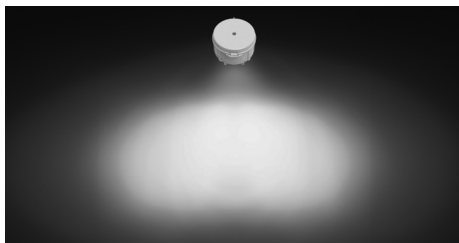


Type I Distribution

Use near center walkways and other pathways.

Light projection concentrates to the side in two opposite directions.

Type III Optic pattern

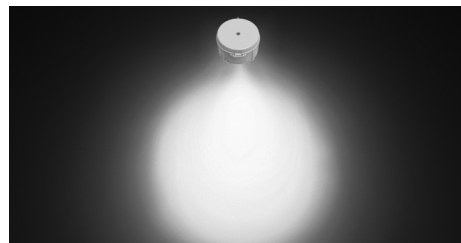


Type III Distribution

Use near one edge of roadways, lots, and other large areas.

Light projection concentrates to the side in two opposite directions as well as to the front.

Type V Optic Pattern



Type V Distribution

Use in the center of roadways, lots, intersection pathways, and other large areas.

Light projection concentrates evenly to all sides.



White Light

Warm white lighting (3000K) contains red, yellow, and orange tones to create a softer, more comfortable atmosphere.

Cooler white light (5000K) has blue tones for a more natural, mid-day white light for better workday production.



Green Light

The nighttime sky is increasingly illuminated by artificial light sources. Many nocturnally migrating birds die or lose a large amount of their energy reserves during migration as a result of encountering artificial light sources.

Lighting with strong green/blue spectrum provides clearer compass orientation for migratory birds.



Amber Light

Research shows that thousands of sea turtles hatched every year are disoriented by artificial white light. Typical site and area lighting confuses hatchlings who rely on moonlight to guide them toward water.

Long-wavelength lighting, such as amber, is less disruptive than white light. Amber LEDs help minimize confusion.

Eco-friendly

A slimmer profile allows up to 3x as many VMLX/WMLX fixtures to fit on a single pallet compared to our previous series. This cuts down on shipping materials and storage footprint. The VMLX/WMLX also reduce the amount of packaging required by 3x—eliminating the need for additional packing material.

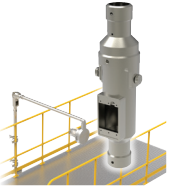


Complementary Products



The Spartan Hinge

Design assists in lowering stanchion poles for retrofitting or servicing lighting fixtures or other pole mounted devices.



The Spartan Hinge JB

Equipped with a combination of a device box opening and the spartan hinge cam system for lowering a stanchion pole.



The Spartan Coupler

Equipped with a device opening capable of mounting various aids for pulling and splicing wires.



The CGB Series

The CGB series offers a REVOLUTIONARY, on the site removable grommets covering a broader cable range with a single gland.



KILLARK®



©2024 Hubbell Incorporated. All rights reserved. Hubbell and the Hubbell logo are registered trademarks or trademarks of Hubbell Inc. All other trademarks are the property of their respective owners.

Hubbell Canada | 870 Brock Rd S, Pickering, ON L1W 1Z8
hubbell.ca | 800-465-7051

