

## Easily Upgrade Outdated Lighting

Killark's VMLX-C directly retrofits to Crouse Hinds mounts, upgrading old HID or existing LED light fixtures



Upgrade outdated Crouse Hinds lighting with no need to remove the existing mount, re-run your wiring, or tear out and re-install your conduit system.

## Complementary Products

### The VML-X Series

Our hazardous location LED high and low bay light fixtures are the most expansive range of certified configurations available and are engineered for maximum safety.



# KILLARK®

© 2024 Killark. All rights reserved.  
2112 Fenton Logistics Park Blvd., Fenton, MO 63026 | 314-531-0460  
www.hubbell.com/killark | killarkinfo@hubbell.com  
LI-KIL-BR-EN-01636 | 04/2024



A proud member of the Hubbell family.

**Hubbell Canada LP**  
870 Brock Road South  
Pickering, Ontario L1W 1Z8  
(905) 839-1138 | infohclp@hubbell-canada.com

**Hubbell Products Mexico**  
Calle 5 Sur No. 105 Col. Parque Ind. Toluca 2000  
Toluca Edo. Mex. CP 50200  
(01 52) 559-151-9999 | info@hubbell.com.mx

# KILLARK®

## VMLX-C Series

Direct Retrofit  
Class 1, Division 2, Zone 2 Applications



# KILLARK®

www.hubbell.com/killark





The same trusted certifications and reliability, now made to retrofit your existing mount

Constant maintenance upgrades are essential to help keep facilities running smoothly. When unexpected outages occur due to old, outdated, or failed light fixtures, it is important to have a quick, efficient solution.

Killark's new CertiLite VMLX-C Series can directly retrofit to HID and LED Crouse Hinds fixture mounts without the need for an additional adaptor.

Class 1, Div. 2, Zone rated, the VMLX-C helps upgrade outdated Crouse Hinds lighting without having to remove the existing mount, re-run your wiring, and tear out or re-install your conduit system.

The VMLX-C reduces labor, maintenance, other material costs, and keeps facilities operating safely and productively.

Benefits

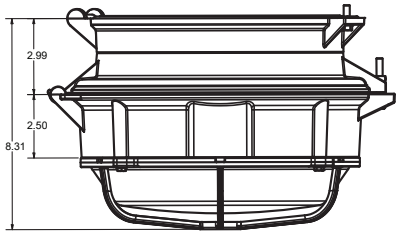
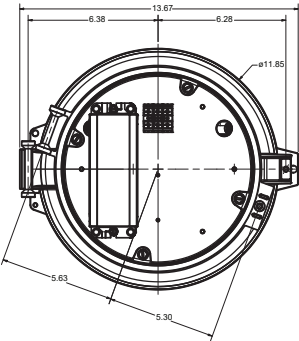
- Reduced labor and maintenance costs
- Improved visual efficiency creating safer working conditions
- Energy Savings upgrading from old HID lighting to LED
- All components pre-assembled to fixture, reducing packing material and storage space

Features

- Mounts directly to existing Crouse Hinds VMV and VMVL Series mounts without the need for an adaptor
- No additional sealing or gasketing needed
- Emergency battery backup options available
- Light output ranges from 5,000 to 18,000 lumens with various optic options

Ability to retrofit to the following existing Crouse Hinds VMV, VMVL, PMVL, & PVMA fixture mounts:

Hub Size	Pendant	Cone	Ceiling	Wall	Stanchion - 25°	Stanchion - straight	Flexible Pendant
3/4"	APM2	BPM2	CM2	TWM2			HPM2
1"	APM3	BPM3	CM3	TWM3			
1-1/2"					JM5	PM5	



Class I, Div. 2, Groups A, B, C, D  
Class I, Zone 2, Groups IIC, IIB, IIA  
Class II, Div. 1 & 2, Groups E, F, G  
Class III  
Suitable for Wet Locations  
Type 3, 4X  
IP66  
Marine Rated (US only)  
Ambient Suitability: -40°C to 55°C (see table),  
-20°C to 50°C for Emergency models

File LR1728

IECEX Certificate:

QPS 15.0006X

ATEX Certificate:

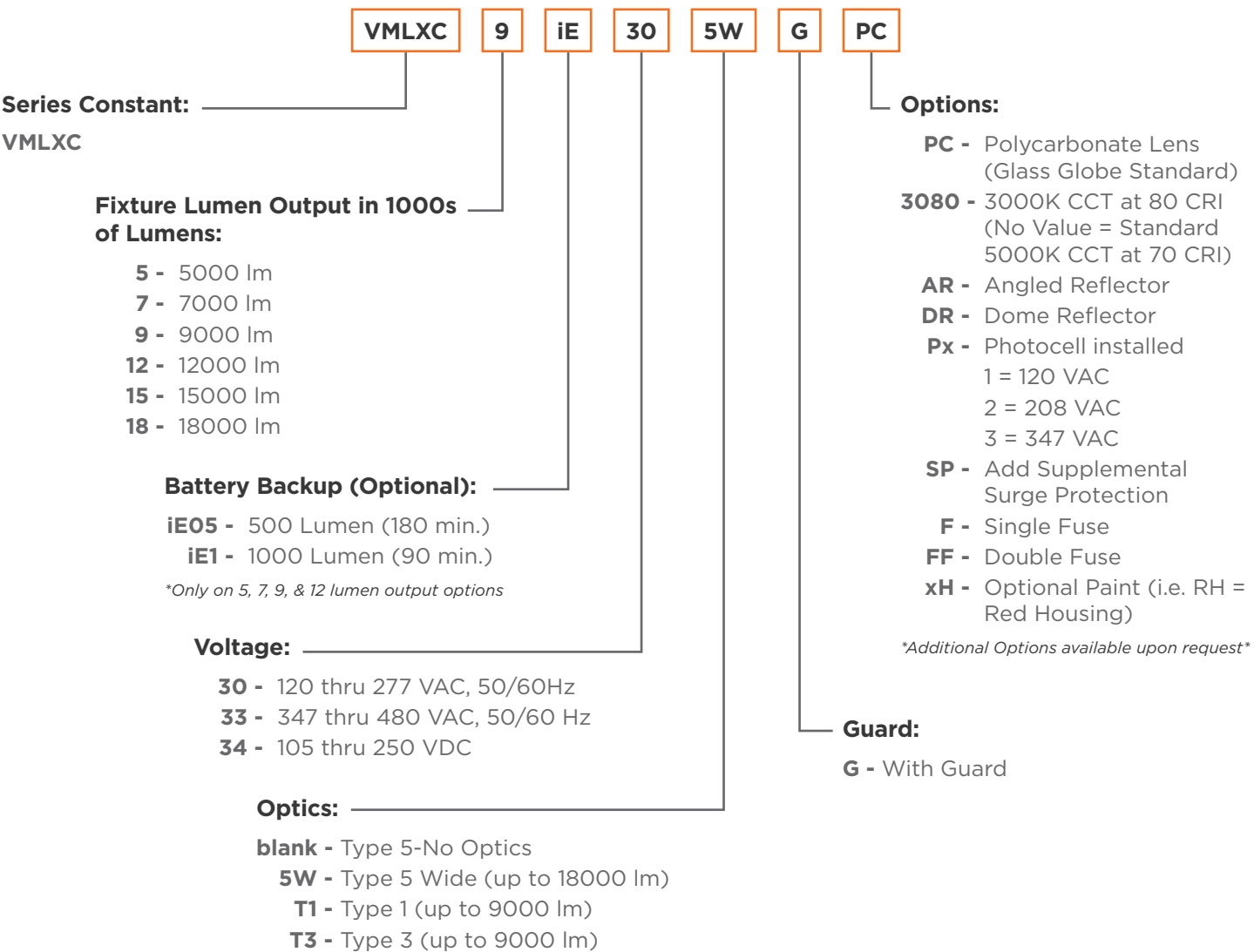
QPS 22ATEX7000X



Delivered Lumens

Catalog Number	Glass Globe						Polycarbonate Globe	
	5000K 70CRI LEDs	Type 5 Wide Optic	Type 3 Optic	Type 1 Optic	Angled Reflector	Dome Reflector	3000K 80 CRI LEDs	PC Clear Globe 5000K LEDs
VMLXC5(XX)(YY)	5295	5002	4916	4868	4096	4802	5052	5353
VMLXC7(XX)(YY)	7101	6708	6548	6528	6116	5301	6532	7179
VMLXC9(XX)(YY)	10010	9338	8966	9087	8513	8964	8691	9992
VMLXC12(XX)(YY)	14046	13305			12049	12645	12922	14200
VMLXC15(XX)(YY)	16359	15496			14033	14727	13811	16538
VMLXC18(XX)(YY)	18960	17745			16070	16865	17324	18939

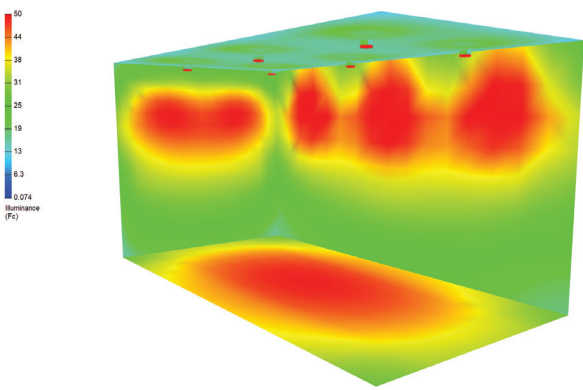
VMLX-C Catalog Logic



How do we compare?

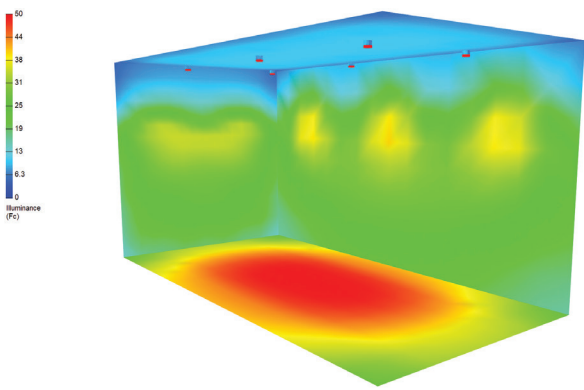
Footcandle Calculation Summary

Killark VMLXC1230G



- Floor Illuminance Average: 44.75 fc
- Ceiling Illuminance Average: 12.42 fc

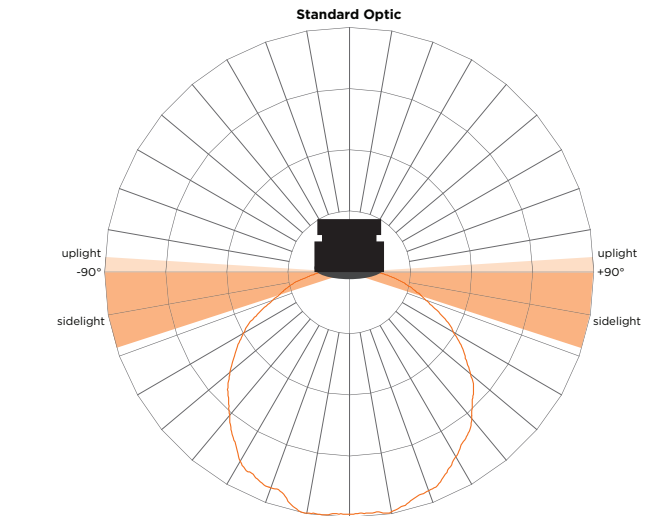
Crouse Hinds VMVL-11-UNV1



- Floor Illuminance Average: 43.41 fc
- Ceiling Illuminance Average: 7.71 fc

Lighting Distribution Summary

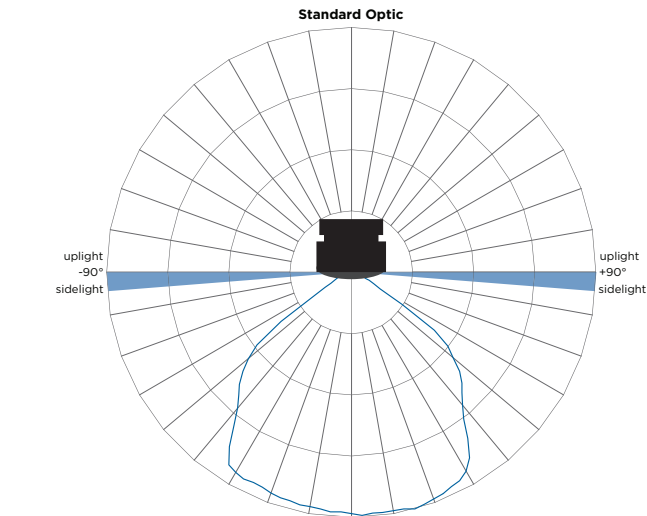
Killark VMLX-C



- Up to 4% uplight using Type V optic as standard
- 20% sidelight using Type V optic as standard
- Up to 5% uplight and 30% sidelight using Type V Wide Optic
- No additional refractors needed

\*Zonal Lumen measurements taken at Zones 0-90, 60-80, and 90-180.

Crouse Hinds VMLV



- 0% uplight as standard
- 5% sidelight as standard
- Additional Glass Refractor needed for more light distribution