



LIGHTING



KILLARK®

VML-X Series

Hazardous Location Luminaires
Class 1, Division 2, Zone 2

WML-X Series

Wet Location Luminaires



VML-X:

Class I, Div. 2, Groups A,B,C,D
Class I, Zone 2, Groups IIC, IIB, IIA
Class II, Div. 1 & 2, Groups E,F,G
Class III

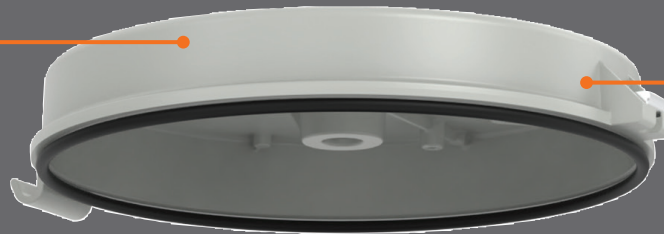
The Next Generation of Human-Centric Lighting is Here

WML-X:

Suitable for wet locations
Type 3, 4X
IP66
Marine Rated (US only)

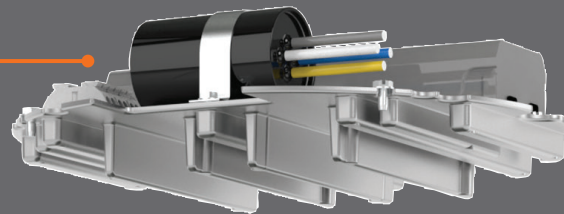
Killark's globally certified VML-X & WML-X series are engineered
and manufactured for your safety

Same mounts as the
legacy Killark VM Series
for easy retrofitting



Single-point closing
with barrel nut allows
one-handed operation for
quick and easy installation

Cage clamp terminals with
loop-n/loop-out functionality
install faster



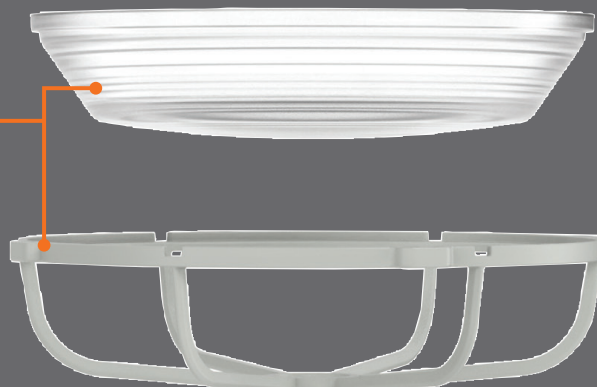
Separate driver plate
for thermal separation
improves driver life

Optional pre-installed
optics to provide
various optical patterns,
putting illumination
where needed



3 unique tank sizes for
lumen output optimization,
footprint reduction, and
heat dissipation

Globe and
guard already
installed, reducing
installation costs



Quality products that perform reliably in the most demanding applications

Identify the area light fixture to match your specification. It's easy!

VML **3** **X** **28** **iE** **30** **A** **2** **5W** **G** **PC**

Series Constant:

- VML** - Hazardous Location Rated
- WML** - Non-Hazardous/ Wet Location Rated

Tank Size:

- 1** - Small (5000, 7000, 9000lm)
- 2** - Medium (12000, 15000, 18000lm)
- 3** - Large (23000, 28000lm)

Fixture Lumen Output in 1000s of Lumens:

- 5** - 5000 lm
- 7** - 7000 lm
- 9** - 9000 lm
- 12** - 12000 lm
- 15** - 15000 lm
- 18** - 18000 lm
- 23** - 23000 lm
- 28** - 28000 lm

Battery Backup (Optional):

- iE05** - 500 Lumen (180 min.)
- iE1** - 1000 Lumen (90 min.)

**Only on 5, 7, 9, & 12 lumen output options*

Voltage - Input Supply:

- 30** - 120 thru 277 VAC, 50/60Hz
- 33** - 347 thru 480 VAC, 50/60 Hz
- 34** - 105 thru 250 VDC

Mounting Splice Box:

- blank** - No splice box provided
- A** - Pendant (VMA2B, VMA3B)
- B** - Wall (VMB2B, VMB3B)
- X** - Ceiling (VMX2B, VMX3B, VMX6B, VMX7B, VMX8B, VMX9B)
- C** - Cone (VMC2B, VMC3B)
- D** - Stanchion 25° (VMD4B, VMD5B)
- S** - Stanchion 90° (Straight) (VMS4B, VMS5B)

Entry Size

- blank** - No splice box
- 2** - 3/4" NPT
- 3** - 1" NPT
- 4** - 1-1/4" NPT
- 5** - 1-1/2" NPT
- 6** - 3/4" NPT (5 hubs)
- 7** - 1" NPT (5 hubs)
- 8** - M20 (Metric- 4 hubs)
- 9** - M20 (Metric 5 hubs)

Options:

- PC** - Polycarbonate Lens (Glass Globe standard)
- YYZZ** - White LED Chromaticity where YY= correlated color temperature (CCT) minimum 3000K; ZZ = Color Rendering Index (CRI) maximum 95 (No value=Standard 5000K CCT 70 CRI minimum)
- AMBER** - Amber colored LEDs primarily used to help protect marine wildlife
- PCAMBER** - Amber colored LEDs. Phosphate Coated Amber.
- Green** - Green colored LEDs. Primarily used to help protect migratory birds.
- AR** - Angled Reflector
- DR** - Dome Reflector
- HA** - High Ambient: bigger tank with lower wattage fixture for use in higher Ambient.
- Px** - Photocell factory installed
 - 1** = 120VAC
 - 2** = 208-277VAC
 - 3** = 347VAC
- SP** - Add Supplemental Surge Protection
- F** - Single Fuse
- FF** - Double Fuse
- CISPR** - CE Marked driver
- xH** - Optional Paint (i.e. RH = Red Housing)

Guard

- G** - With Guard

Optics

- blank** - Type 5-No optics
- 5W** - Type 5 wide (Up to 18000lm)
- T1** - Type 1 (Up to 9000lm)
- T3** - Type 3 (Up to 9000lm)

The extensive range of certified configurations on the market

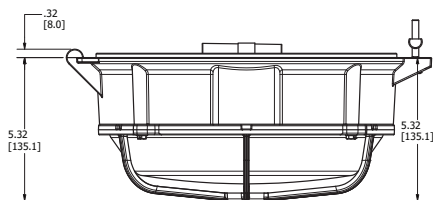
Battery Backup Functionality

- Self-diagnostics monitors LED status, LED driver circuit, battery capacity and charger function and displays any fault detection by means of a flashing code
- Self-Test feature automatically runs a 1 minute test once a month and an alternating 30-60 minute test once every 6 months. LED indicator provides visible fault detection and charging status
- User-initiated 1- or 90-minute system test feature
- 15 minute re-transfer delay
- Automatic unit transfer in brown-out conditions (below 80% of nominal AC input voltage)
- 90- or 180-minute runtime options



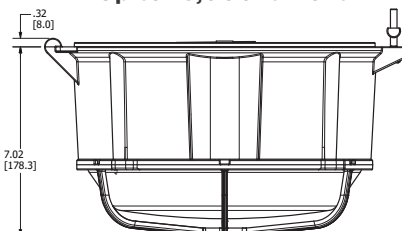
Optional self-testing emergency battery backup

Up to 9,000 lumens



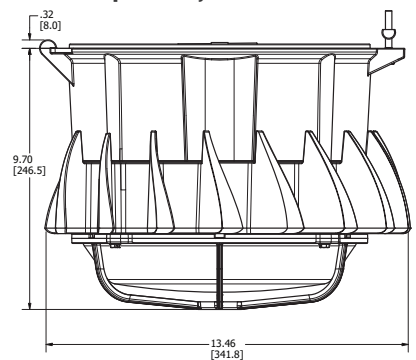
Size 1

Up to 18,000 lumens



Size 2

Up to 28,000 lumens



Size 3

Delivered Lumens

| Catalog Number | Glass Globe | | | | | | | | | Polycarbonate |
|-----------------|------------------|-------------------|--------------|--------------|------------------|----------------|-----------|-----------|------------------|---------------|
| | 5000K 70CRI LEDs | Type 5 Wide Optic | Type 3 Optic | Type 1 Optic | Angled Reflector | Dome Reflector | Green LED | Amber LED | 3000K 80CRI LEDs | Clear Globe |
| VML1X5(XX)(YY) | 5295 | 5002 | 4803 | 4868 | 4560 | 4802 | 3694 | 1890 | 4871 | 5353 |
| VML1X7(XX)(YY) | 7101 | 6708 | 6441 | 6528 | 6116 | 6440 | 4030 | — | 6532 | 7179 |
| VML1X9(XX)(YY) | 9884 | 9338 | 8966 | 9087 | 8513 | 8964 | 4368 | — | 9093 | 9992 |
| VML2X12(XX)(YY) | 14046 | 13305 | — | — | 12049 | 12645 | 7005 | 2859 | 12922 | 14200 |
| VML2X15(XX)(YY) | 16359 | 15496 | — | — | 14033 | 14727 | 7642 | — | 15050 | 16538 |
| VML2X18(XX)(YY) | 18733 | 17745 | — | — | 16070 | 16865 | — | — | 17234 | 18939 |
| VML3X23(XX)(YY) | 23090 | — | — | — | 19807 | 20787 | — | — | 21242 | — |
| VML3X28(XX)(YY) | 28275 | — | — | — | 24424 | 25446 | — | — | 26013 | — |

When Light Matters, VML-X or WML-X Is Your Solution

Type I Optic Pattern

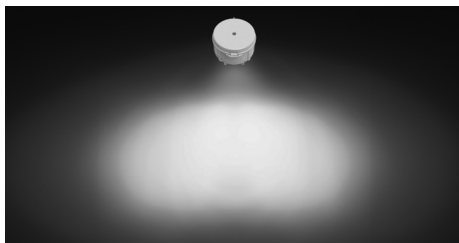


Type I distribution

Use near center walkways and other pathways

Light projection concentrates to the side in two opposite directions

Type III Optic pattern

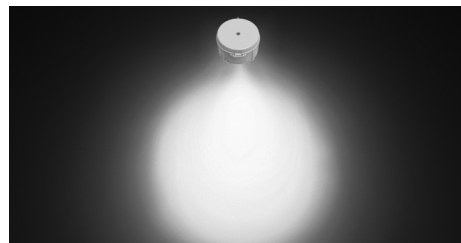


Type III distribution

Use near one edge of roadways, lots, and other large areas

Light projection concentrates to the side in two opposite directions as well as to the front

Type V Optic Pattern



Type V distribution

Use in the center of roadways, lots, intersection pathways, and other large areas

Light projection concentrates evenly to all sides



White Light

Warm white lighting (3000K) contains red, yellow, and orange tones to create a softer, more comfortable atmosphere.

Cooler white light (5000K) has blue tones for a more natural, mid-day white light for better workday production.



Green Light

The nighttime sky is increasingly illuminated by artificial light sources. Many nocturnally migrating birds die or lose a large amount of their energy reserves during migration as a result of encountering artificial light sources.

Lighting with strong green/blue spectrum provides clearer compass orientation for migratory birds.



Amber Light

Research shows that thousands of sea turtles hatched every year are disoriented by artificial white light. Typical site and area lighting confuses hatchlings who rely on moonlight to guide them toward water.

Long-wavelength lighting, such as amber, is less disruptive than white light. Amber LEDs help minimize confusion.

Eco-friendly

A slimmer profile allows up to 3x as many VMLX/WMLX fixtures to fit on a single pallet compared to our previous series. This cuts down on shipping materials and storage footprint. The VMLX/WMLX also reduces the amount of packaging required by 3x—eliminating the need for additional packing material.



Complementary Products



The Spartan Hinge

Design assists in lowering stanchion poles for retrofitting or servicing lighting fixtures or other pole mounted devices.



The Spartan Hinge JB

Equipped with a combination of a device box opening and the spartan hinge cam system for lowering a stanchion pole.



The Spartan Coupler

Equipped with a device opening capable of mounting various aids for pulling and splicing wires.



The CGB Series

The CGB series offers a REVOLUTIONARY, on the site removable grommets covering a broader cable range with a single gland!



KILLARK®

© 2024 Killark. All rights reserved.

2112 Fenton Logistics Park Blvd., Fenton, MO 63026 | 314-531-0460

www.hubbell.com/killark | killarkinfo@hubbell.com

LI-KIL-BR-EN-01988 | 03/28/2024

Hubbell Canada LP

870 Brock Road South

Pickering, Ontario L1W 1Z8

(905) 839-1138 | infohclp@hubbell-canada.com

Hubbell Products Mexico

Calle 5 Sur No. 105 Col. Parque Ind. Toluca 2000

Toluca Edo. Mex. CP 50200

(01 52) 559-151-9999 | info@hubbell.com.mx



A proud member of the Hubbell family.