

VORA™ 50L

ARCHITECTURAL RECESSED TROFFER
WITH **EDGE-LIT** TECHNOLOGY

LITECONTROL
making light work™



HUBBELL
Lighting



VORA™

Vora was created with the future in mind by pushing the boundaries of the current landscape of recessed products.

Featuring the newest generation of LED edge-lit technology, two laser etched acrylic panels emit a perfectly uniform diffused surface while utilizing our patented center mixing chamber to disperse excess light. Extruded and cast aluminum components complete a quality construction that is unmatched. The result is one of the thinnest architectural troffers with a unique take on the traditional aesthetic.

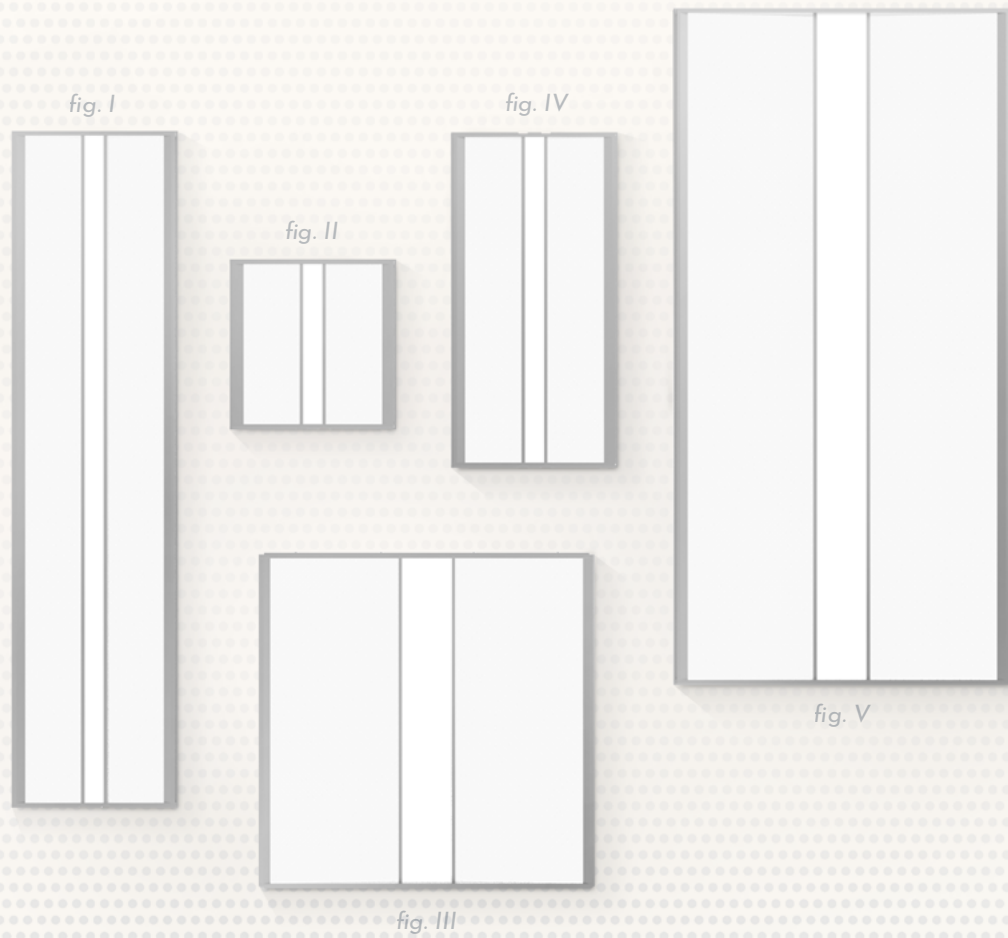
Table of Contents

- | | | | |
|---|-----------------------|---|----------------------------|
| 1 | Introduction | 5 | Decorative Application |
| 3 | Sizes & Finishes | 7 | Construction & Performance |
| 4 | Center Visual Designs | 9 | Ordering Guide |



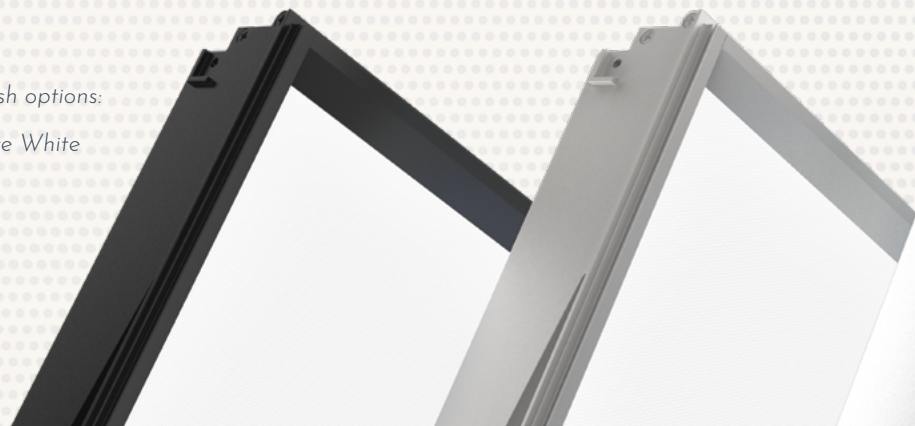
FIVE SIZES

fig. I: 1' x 4', fig. II: 1' x 1', fig. III: 2' x 2', fig. IV: 1' x 2', fig. V: 2' x 4'



THREE FINISHES

Vora features custom colors and three finish options:
Carbon Black, Machined Aluminum & Matte White



THREE VISUALS



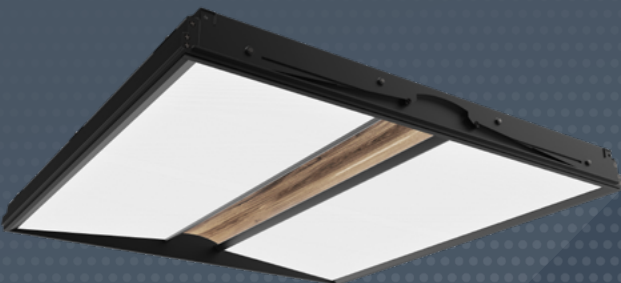
OPEN

The Open visual allows for direct view to the center mixing chamber reflector. A fresh new look to the architectural market.



LENS

The Lens visual allows for a more traditional look by incorporating a third lens into the fixture.



DECORATIVE

An upscale take on the open visual, the Decorative center allows for a special graphic insert into the center chamber.



*Personalize your space with
custom decorative inserts*

VORA™

FEATURING
INDE-PENDANTS



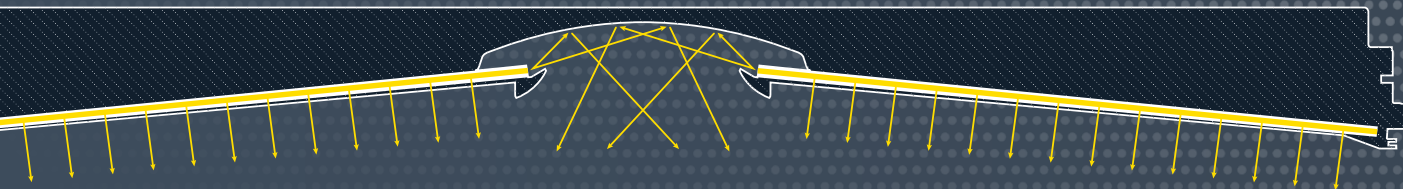
A modern office interior featuring a large wall of vertical wood panels. A white reception desk is positioned in front of the wall. A single pendant light hangs from the ceiling. To the right, a large window looks out onto a city skyline. In the foreground, a white reception desk with a wood panel on its side is visible. A dark, reflective floor shows the surrounding environment.

DECORATIVE

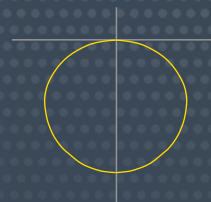
Whether matching a feature wall in your space, bringing a pop of color to the ceiling plane or adding a custom graphic, there are endless ways to personalize your space.

*The Decorative
center visual design
allows for INFINITE
CUSTOMIZATION.*

CONSTRUCTION

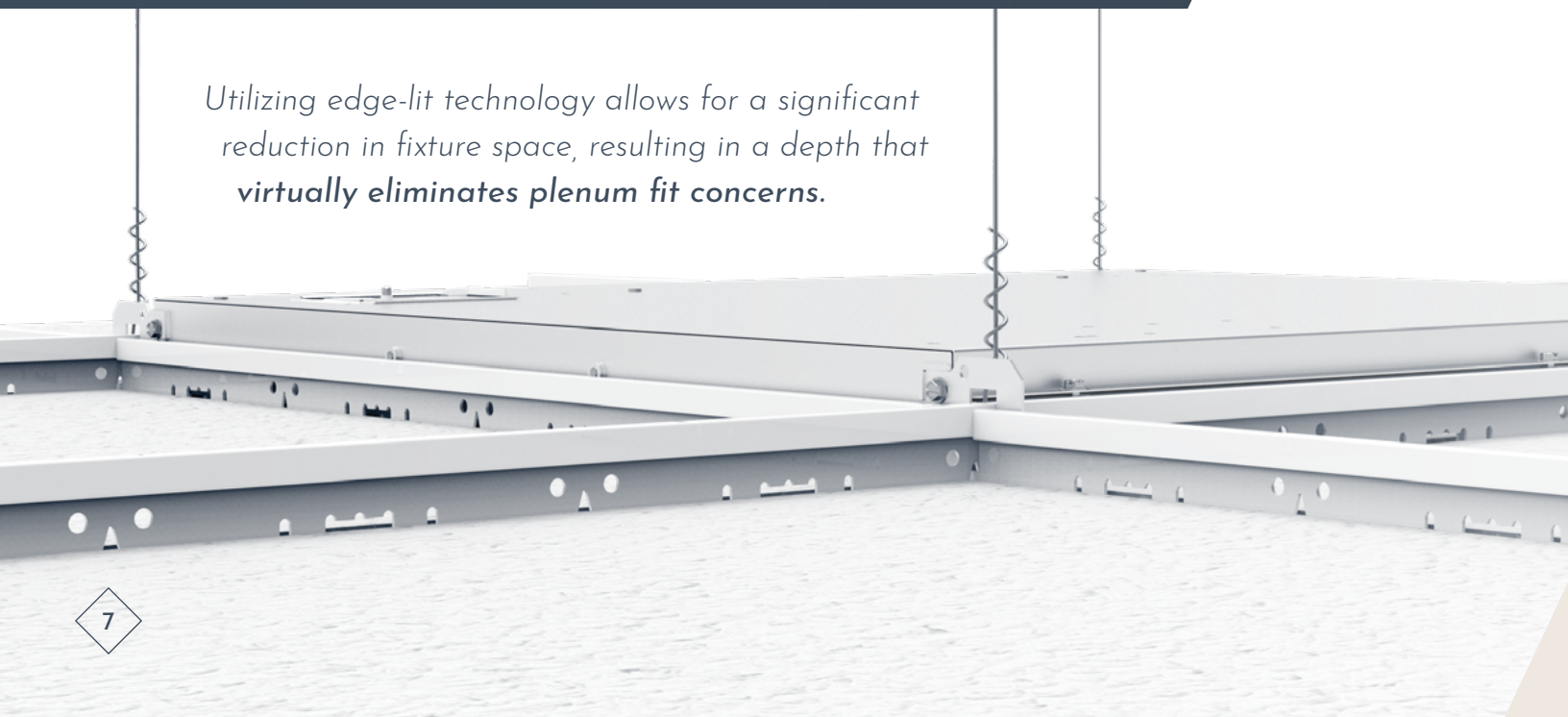


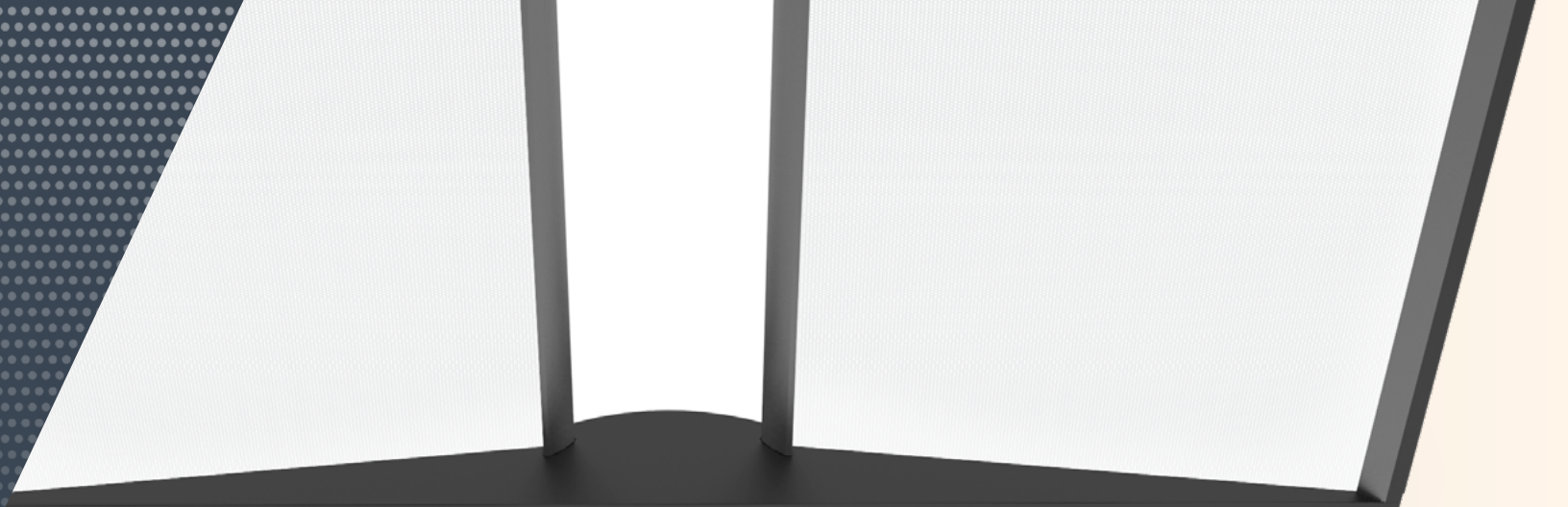
LED boards located at the sides of the fixture direct the light through the acrylic light guides. The light collides with the laser etched optics in the lens to direct the light into the room. Excess light spills into the **center mixing chamber** and is recycled back out into the space. The result is uniform light throughout the entire appearance of the fixture.



LUMEN RANGE <i>lm/fixt</i>	1x1 1000 - 2900	1x2 1000 - 4200	1x4 1600 - 5500	2x2 1000 - 6000	2x4 1700 - 8000
EFFICACY RANGE <i>lm/W</i>	72 - 80	83 - 90	101 - 106	109 - 120	101 - 102
CRI	1x1, 1x2, 1x4, 2x2, 2x4 80, 90				
CCT	27K / 30K / 35K / 40K / 50K				
SPECTRASYN	2230TD / 2750T / 2765T				

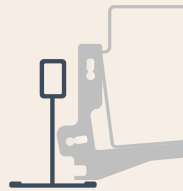
*Utilizing edge-lit technology allows for a significant reduction in fixture space, resulting in a depth that **virtually eliminates plenum fit concerns.***



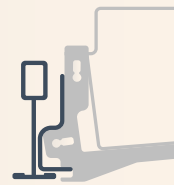


The use of light guides allows for the full lumen output to be spread across the fixture rather than a single, visible source. This results in a reduction of glare and a **visually comfortable, quiet appearance**.

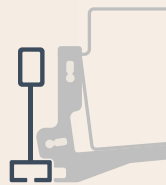
G Grid



NG Narrow
Face Grid



SS Screw
Slot



DW Drywall
Ceiling



MOUNTING OPTIONS

Vora's **universal frame design** allows for interface with multiple ceiling types. A single bracket is added to allow adaption to 9/16th narrow grid.

2.2 inches



SpectraSync™ is an easy and intuitive white tuning solution offered in two modes to accommodate a variety of applications.

Dim to Warm

Dim to Warm mimics the familiar warming effect that occurs with traditional incandescent sources as they are dimmed. (Available with 2200K-3000K)

Tunable White

Tunable White offers users the ability to tailor CCT to their personal preference, enhancing task visibility, material and colors, or the aesthetics of the space. (Available with 2700K-5000K or 2700K-6500K)

2200K 3500K 4500K 5000K 6500K

ORDERING GUIDE

FEATURES

Series	50L	Edge-lit Troffer
Ceiling Type	G	15/16" Grid Ceiling
	NG	9/16" Narrow Face Grid Ceiling
	SS	9/16" Screw Slot Grid Ceiling
	DW	Drywall Ceiling
Distribution	D	Direct
Size	11	1' x 1' Fixture
	12	1' x 2' Fixture
	14	1' x 4' Fixture
	22	2' x 2' Fixture
	24	2' x 4' Fixture
Center Visual Design	OPN	Open Cavity - No Diffuser
	SOF	Soft Diffuse
	DEC	Decorative Custom Graphic
Finish/Color	C1	Matte White
	C4	Machined Aluminum
	C5	Carbon Black
	CC	Custom Color
Color Temperature	27K	2700K
	30K	3000K
	35K	3500K
	40K	4000K
	50K	5000K
	27K9	2700K, 90 CRI
	30K9	3000K, 90 CRI
	35K9	3500K, 90 CRI
	40K9	4000K, 90 CRI
	50K9	5000K, 90 CRI
	2230TD	2200K-3000K SpectraSync™ Dim to Warm

	2750T	2700K-5000K SpectraSync™ Tunable White
	2765T	2700K-6500K SpectraSync™ Tunable White
Output (100 lm/ft)	D10	1000
	D80	8000
Driver	NDM	Non Dimming
	D05	5% Dimming, 0-10V
	DS5	Soft-Start 5% Dimming, 0-10V
	D01	1% Dimming, 0-10V
	DS1	Soft Start 1% Dimming, 0-10V
	D00	Dim-to-off, 0-10V
	DS0	Soft-Start Dim-to-off (1%), 0-10V
	LEC	Hi-lume 1% EcoSystem LED driver
	DALI	DALI
	DALIP	DALI Powered Bus
Voltage	UNV	Universal Voltage (120V-277V)
	120	120 Volt
	240	240 Volt
	347	347 Volt

OPTIONAL FEATURES

Emergency	PLD7	Dual-Lite PLD7 Battery Pack
Chicago Environmental Air Modification	CCEA	Chicago Environmental Air Modification
Flex Whip	FW	Flex Whip

CONTROL OPTIONS

Lutron Vive

- LV** 0-10V Wireless RF Fixture Module
- LVS** Lutron Vive, DALIP, PIR Occupancy Sensor, Dimming Daylight Harvesting
- LVR** Lutron Vive Enabled, DALIP

NX

- NXE** NX Enabled, Dual SmartPorts
- NXWE** NX Wireless Enabled
- NXES** NX Enabled, Dual SmartPorts, PIR Occupancy Sensor, Dimming Daylight Harvesting
- NXS** NX Enabled, PIR Occupancy Sensor, Dimming Daylight Harvesting (standalone)
- NXSW** NX Wireless, PIR Occupancy Sensor, Dimming Daylight Harvesting
- NXWD** NX Wireless Enabled, Dual SmartPORTs
- NXSWD** NX Wireless, PIR Occupancy Sensor, Dimming Daylight Harvesting, Dual SmartPORTs

Sensors

- SDI** Daylight Sensor Required.
- SOI** Occupancy Sensor Required.
- SZI** Zigbee Radio Module Required.



We Comply

UL924 Overriding controls in emergency mode for your safety



ALERA LIGHTING
ARCHITECTURAL AREA LIGHTING
BEACON PRODUCTS
COLUMBIA LIGHTING
COMPASS
DUAL-LITE
HUBBELL CONTROL SOLUTIONS
HUBBELL INDUSTRIAL LIGHTING
HUBBELL OUTDOOR LIGHTING
KIM LIGHTING
KURT VERSEN
LITECONTROL
PRESCOLITE

LITECONTROL
making light work™

701 Millennium Blvd. Greenville, SC 29607
Tel 864.678.1000
www.litecontrol.com

LC18000003 09/18

Copyright © 2018 *Litecontrol*, a division of Hubbell Lighting, Inc. All rights reserved. Please refer to online specifications for most up-to-date content as specifications are subject to change without notice.