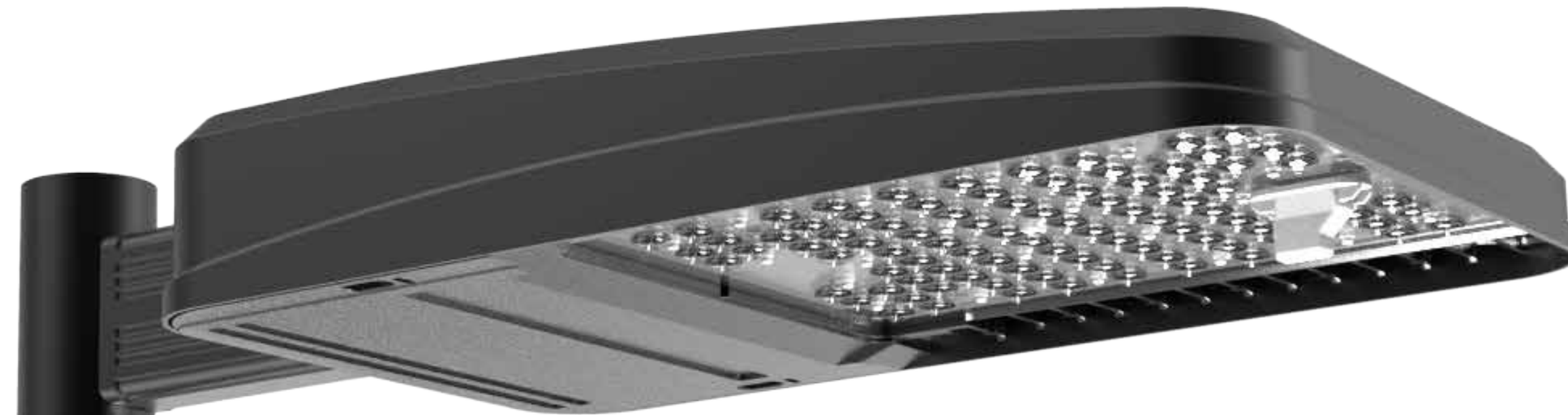


VIPER

Outstanding Performance. Exceptional Value.





Viper Large

shown with Rectangular Arm and SiteSync

Minimalist in **Form**. Robust in **Design**. Adaptable in **Application**.

Beacon Products' exclusive Strike Optics for Viper deliver category leading performance. By maximizing target efficiency, the Viper ensures simple layout design that is high in uniformity and minimal in light trespass. Such control reduces energy consumption, lowers installation costs, and improves the visual acuity.

SiteSync and Energeni integrated controls offer outstanding performance at exceptional price levels. Pre-commissioned and simple to use, Viper controls give the most novice of users the ability to create highly functional, robust control schedules for optimal luminaire usage and maximized energy savings.

Advanced luminaire design separates the Viper from other area and site products. With Lifeshield™ thermal control, an elegantly simple heat sink design and industry leading surge protection, the Viper is designed for sustained, long-term performance.

One Product Family One family, boundless configurations. Offered in two sizes, Viper optimizes performance, output, and efficiency. The Viper is ideal for applications ranging from pedestrian walkways to large logistical centers with extremely high mounting heights. Outputs begin at 5,000 lm. Maximum output exceeds 42,000 lm.



OPTICS STRIKE

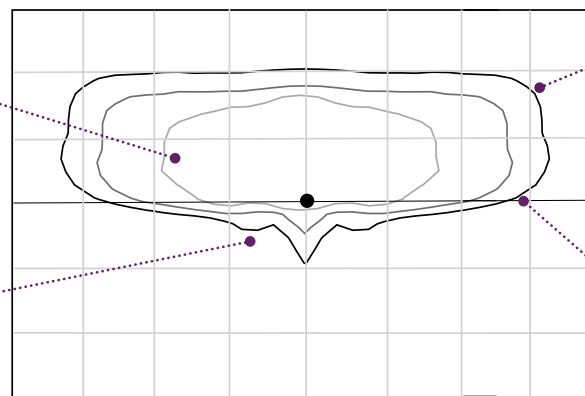
Beacon Products' exclusive Strike Optics for Viper maximizes target zone illumination with minimal losses at the house-side, greatly reducing light trespass issues. This outstanding optic control simplifies layouts and installations, reduces energy consumption, lowers installation costs and improves visual acuity.

Strike Optics - Precision Wins.

Viper Strike Optic (Type 3)

Even distribution of intensity improves visual acuity

Low percentage of spill light at house side saves energy and reduces light trespass issues.



Wide, squared off corners simplify layout design and greatly improve uniformity by reducing contrast in transition zones from one luminaire to the next

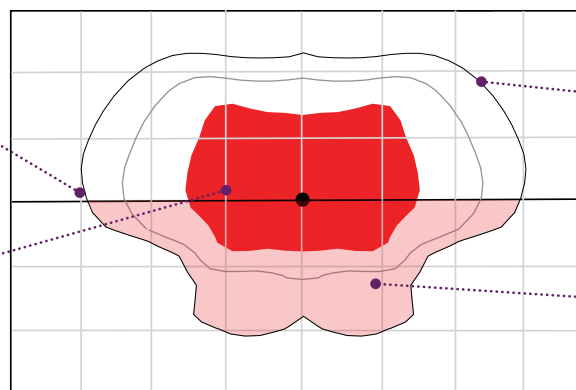
Wider illumination at the curb line allows for increased pole spacing: reducing material, installation, and operating costs

Total Delivered Lumens: 22,683 lm
Total Street Side Lumens: 19,550 lm @ 181W

Competitor Optics (Type 3)

Rounded corners at the curb line reduces pole spacing and adds zones of contrast

Narrow zone of high intensity yields areas of high contrast resulting in poor uniformity and poor visual acuity



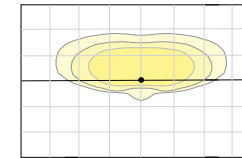
Rounded corners in distribution complicates layout overlays and contributes to areas of high contrast resulting in poor uniformity and poor visual acuity

High percentage (up to 25%) of spill light at house side wastes energy and can cause light trespass issues on neighboring properties.

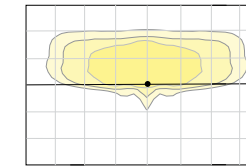
Total Delivered Lumens: 21,337 lm
Total Street Side Lumens: 15,947 lm @ 188W

Strike Optics - Type 2, 3 and 4...Superior Control, Outstanding Efficiency.

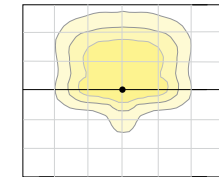
Type 2



Type 3

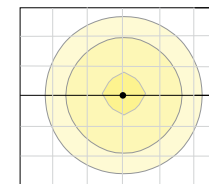


Type 4

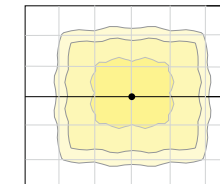


Symmetric Distributions - Type 5W, 5QM, 5QN and 5R...Flexibility in Application.

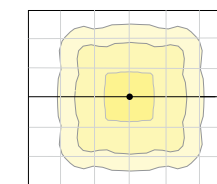
Type 5W



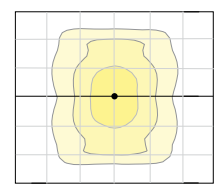
Type 5QM



Type 5QN

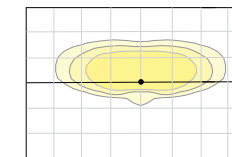


Type 5R

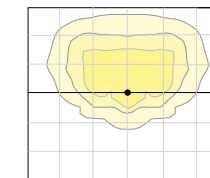


Specific Distributions - Type FR Automotive Front Row, Type 4W Wide Forward Throw

Type FR



Type 4W



Front Row Auto Optic

Optimize merchandise display by maximizing illumination on the front row product display using the Beacon Viper FR auto optic.



Backlight Control

Reduce light trespass by up to 85% by using backlight control on the Type 4W optic without compromising fixture appearance or increasing the system EPA.



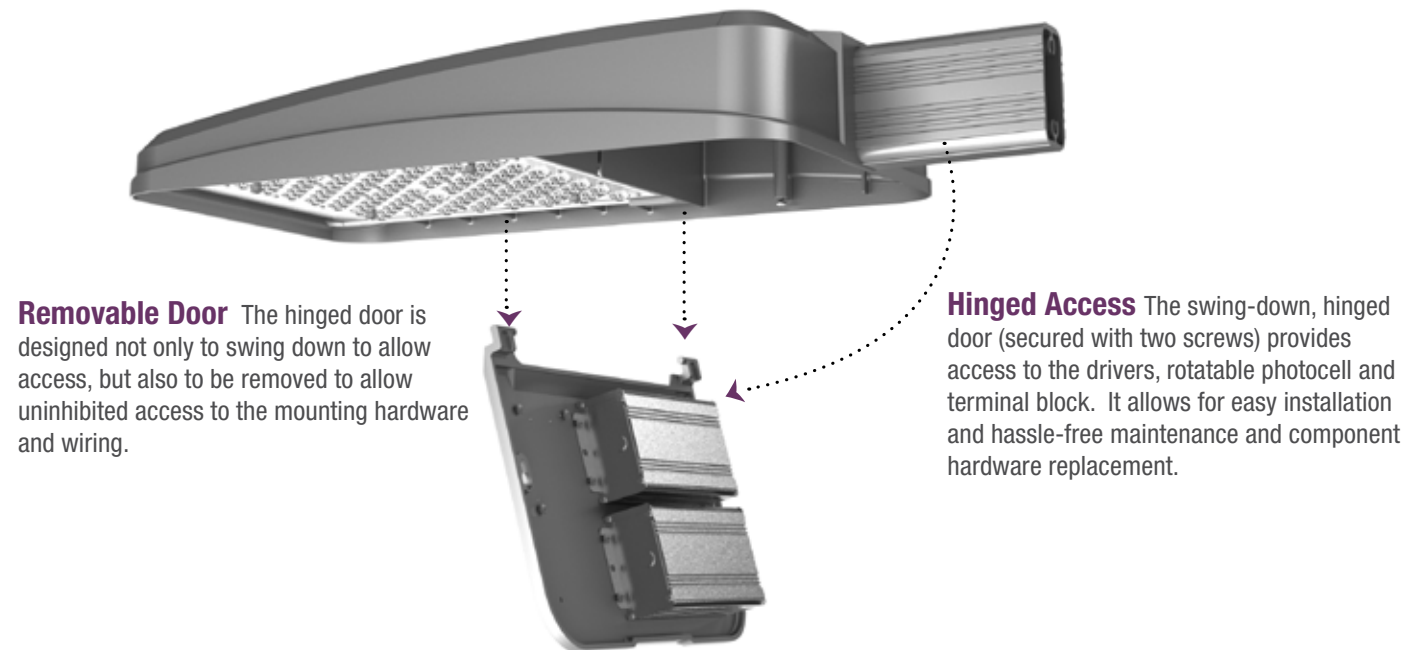
*Backlight control demonstrated on front roadways.

Advanced Luminaire Design

Reliability begins with design. Key design principles that are the foundation for the Beacon Viper include effective thermal management, circuit protections, and mechanical integrity. Integrated Lifeshield™ thermal controls protect the Viper from excessive temperature conditions while still providing illumination, even when ambient temperatures exceed rated limits. Complemented with an elegantly simple heat sink housing design, the Viper optimizes performance and long term reliability.

Integrated surge suppression safeguards against over voltage conditions.

Robust mechanical design begins with material selection, including die cast aluminum and stainless steel, incorporates conservative design strategies, and ends with high corrosion resistant finishes. By leveraging all of these design principles, the Viper is enduring.

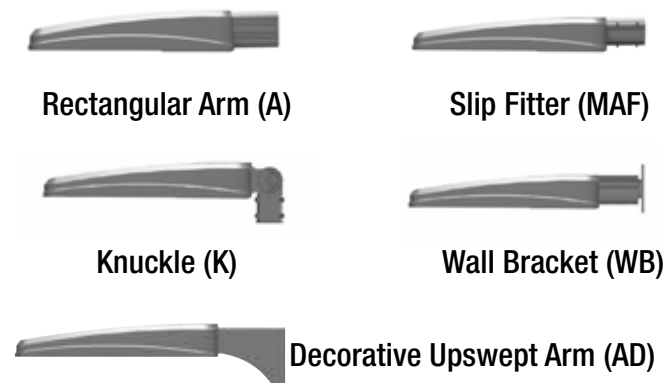


Removable Door The hinged door is designed not only to swing down to allow access, but also to be removed to allow uninhibited access to the mounting hardware and wiring.

Hinged Access The swing-down, hinged door (secured with two screws) provides access to the drivers, rotatable photocell and terminal block. It allows for easy installation and hassle-free maintenance and component hardware replacement.

Mounting Options

Versatility in mounting simplifies installation and accelerates investment returns. Viper is ideal for relight or new construction projects.



Decorative Upswept Arm (AD) Adjustable mounting for most 2 hole bolt patterns for a drill free retrofit. Available for both Viper Small and Large.



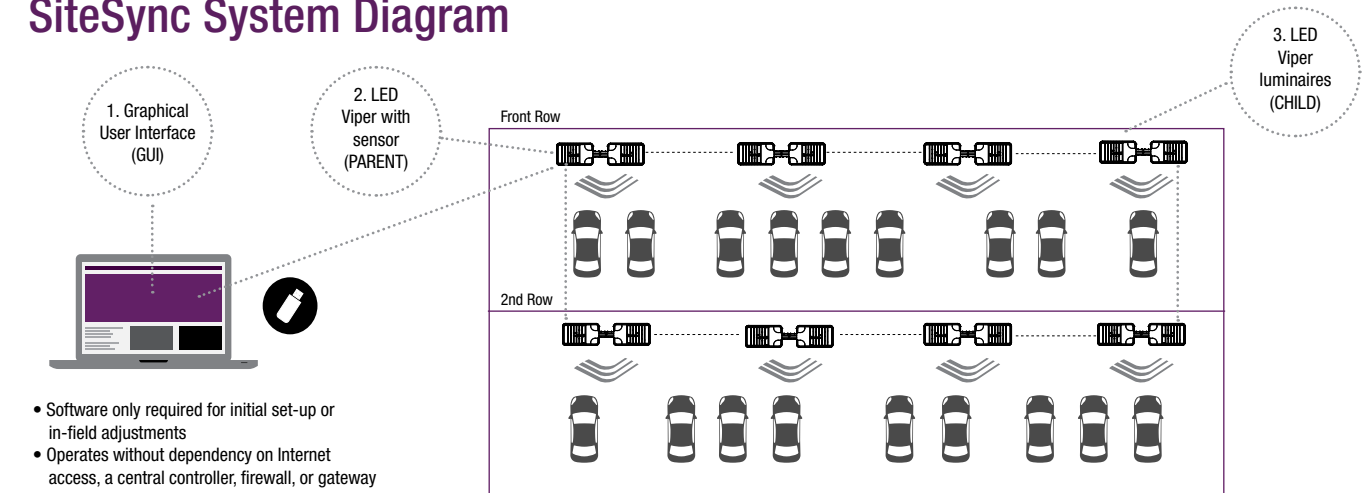
Integrated Controls



Simple, Reliable and Affordable...SiteSync delivers flexible control strategies for reducing power consumption and minimizing maintenance costs while delivering the right light levels with a simple and affordable wireless solution. With SiteSync's pre-programmed approach, installation becomes a quick and easy process, greatly reducing the complexity, time, and cost compared to typical field commissioning.

SiteSync is based on a wireless mesh network architecture that enables luminaires to operate independently without the need for web based connectivity. This provides a cyber safe platform that delivers reliable communication and control versus other gateway based systems. With a complete offering of Hubbell Lighting site and area, decorative, garage, wall, and flood LED luminaires available with SiteSync, you have the flexibility to create an intelligent outdoor lighting package that will meet a wide variety of application needs.

SiteSync System Diagram



a compact control device that gives lighting owners a simple way to save on energy costs...

The **ENERGENI** lighting control system is a simple way for owners to save money by dimming the fixtures during unoccupied hours. The **ENERGENI** has flexible setting options to work with fixtures activated by photocontrols or time clocks. The delay and dimming level options can be configured at the factory or reconfigured at will in the field without the need for special cables or computers.



Occupancy Sensors Optional sensors control light output based on area utilization. Use for energy savings and local code compliance.



HUBBELL
Lighting

701 Millennium Blvd.
Greenville, SC 29607
hubbellighting.com

ALERA LIGHTING

ARCHITECTURAL AREA LIGHTING

BEACON PRODUCTS

COLUMBIA LIGHTING

COMPASS

DUAL-LITE

HUBBELL CONTROL SOLUTIONS

HUBBELL INDUSTRIAL LIGHTING

HUBBELL OUTDOOR LIGHTING

KIM LIGHTING

KURT VERSEN

LITECONTROL

PRESCOLITE

WHITEWAY



2041 58th Avenue Circle East
Bradenton, FL 34203

t 800.345.4928
f 941.751.5535

June 19, 2017 1:10 PM

