



# LTRE

TRANSITION® ENCLOSED LED DEEP  
ARCHITECTURAL CENTER LENS

Columbia  
LIGHTING

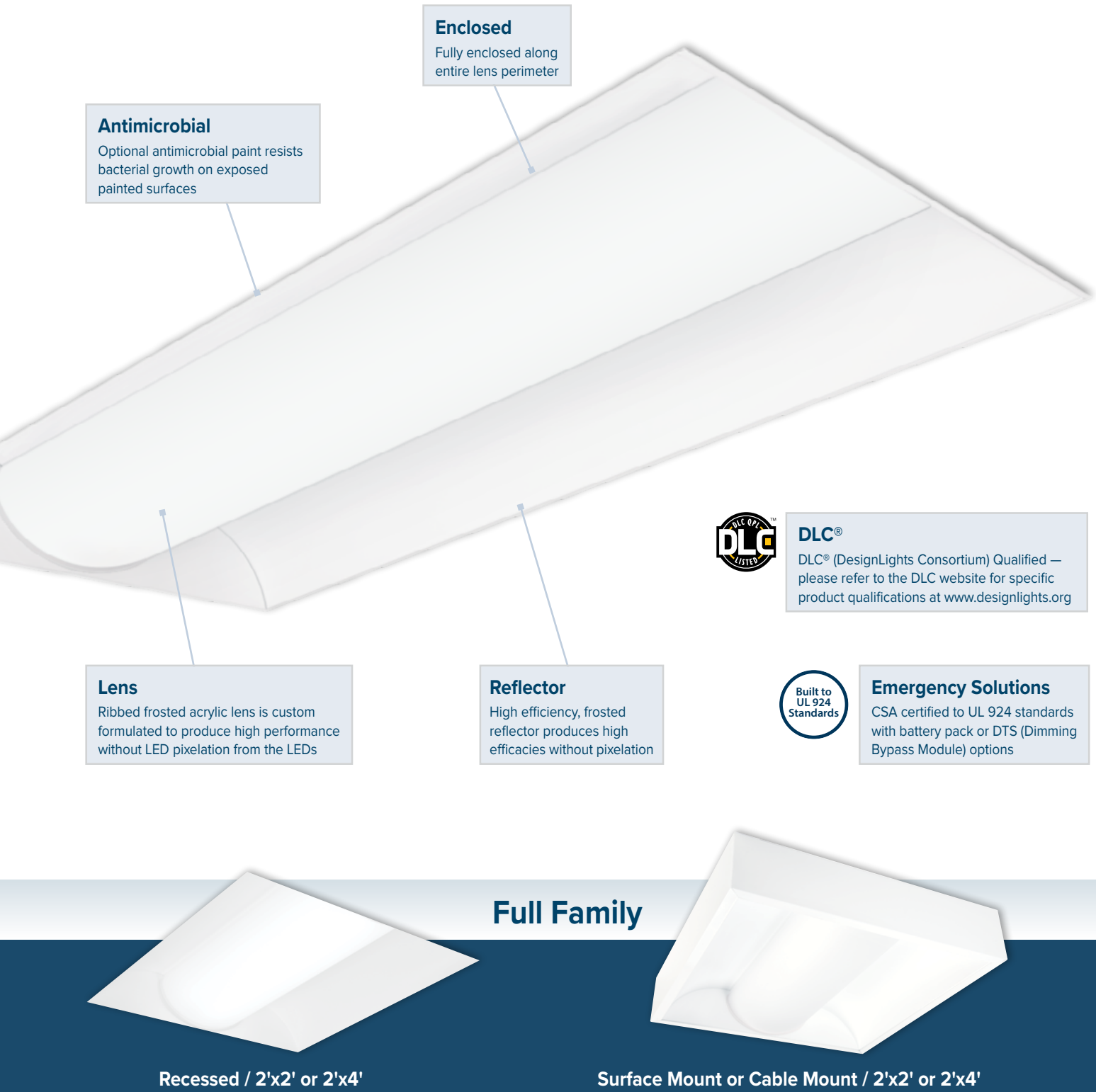


HUBBELL  
Lighting



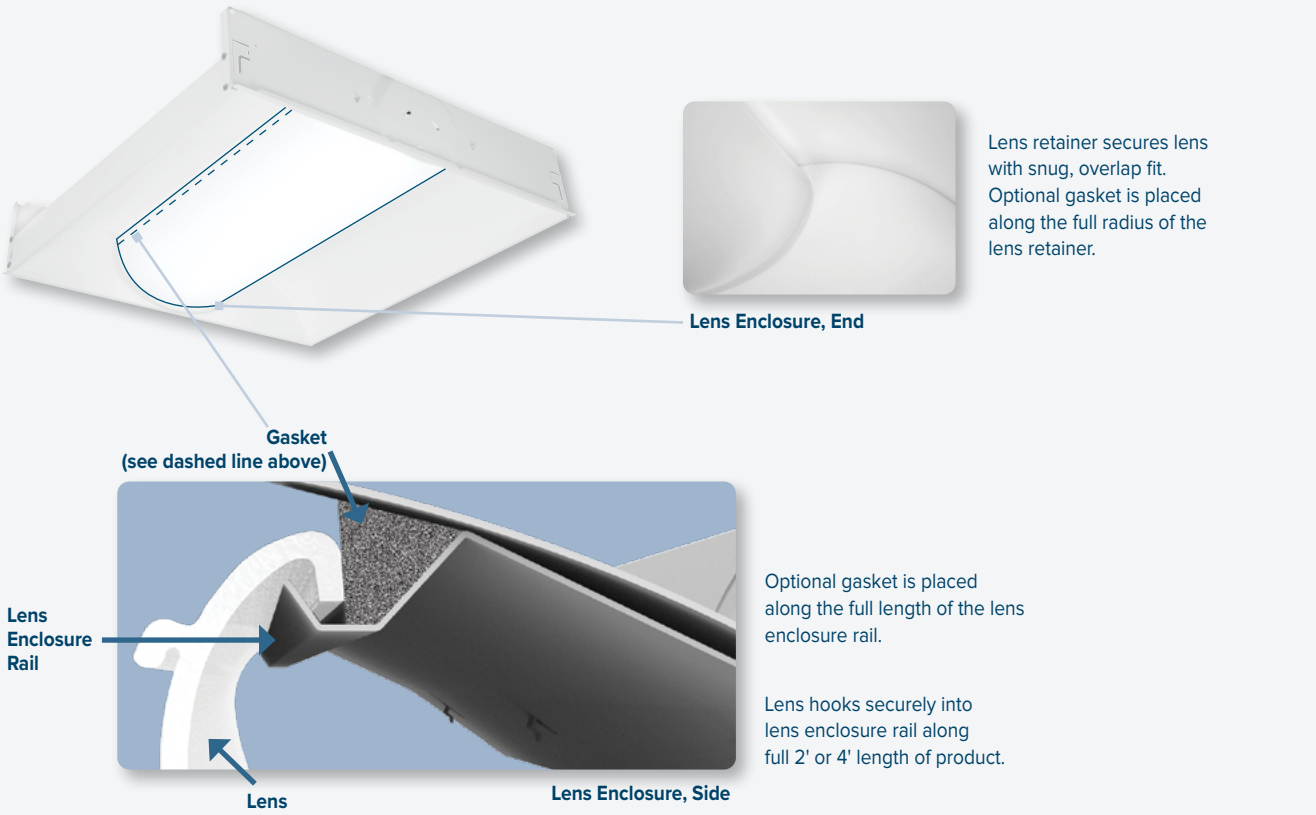
# Features and Benefits

LTRE Transition® Enclosed LED Deep Architectural Center Lens provides lighting optimized for the beauty of your design, the flexibility of your needs, the health of your occupants and the quality of your schools. With attractive recessed direct/indirect styling, LTRE enhances any application and installs easily for relight or new construction. LTRE's long LED life significantly reduces maintenance needs, while its smooth surfaces allow for easy cleaning.



# Enclosed LED Compartment

Lens is self engaging along the entire perimeter of the shielding to provide a barrier which keeps the LED compartment clean and reduces maintenance requirements.



<b>Antimicrobial Paint</b> Optional antimicrobial paint (AM option) resists bacterial growth on exposed painted surfaces. Appropriate for medical facilities, dining areas, locker rooms, dormitories and public spaces.	<b>Relight or New Construction</b> 2' x 2' and 2' x 4' configurations are easily recessed, surface mounted, or suspended in new or existing spaces. Designed for both beauty and function, LTRE provides an attractive, professional appearance to elevate the look and feel of the surrounding environment.
<b>Controls Compatible</b> Fully integrates with common energy saving controls devices to reduce power consumed and to comply with energy code requirements.	<b>Wet Label</b> Optional wet label listing allows LTRE to be used in locker rooms, restrooms, and other interior spaces where water contact may occur.

Performance

Light output

Efficacy up to 130 lumens per watt, combined with multiple size and lumen packages, makes LTRE a smart choice for many types of facilities including office, health care, and educational spaces.

Size	Lumen Package	Lumens	Watts
2x2	ML	2,975–3,100	30
	HL	3,625–3,875	36
	VL	4,275–4,925	44
2x4	LW	4,275–4,875	38
	ML	4,650–5,325	41
	HL	5,575–6,475	52
	VL	7,225–8,250	67
	XL	8,350–9,650	81

Energy efficiency

LTRE simplifies energy reduction. A wide variety of driver options assures that LTRE can be tailored to your power density requirements. LTRE is also controls compatible for code compliance and additional energy savings.

LED performance

Long-life LEDs rated at 50,000 hours and L80 lumen maintenance reduce facility maintenance needs over time. LTRE has excellent color consistency, falling within a 3-Step MacAdam Ellipse, within the fixture, from fixture to fixture, and over time.

DLC® qualified

DLC (DesignLights Consortium) Qualified, LTRE is rebate friendly. Please refer to the DLC website for specific product qualifications at [www.designlights.org](http://www.designlights.org).

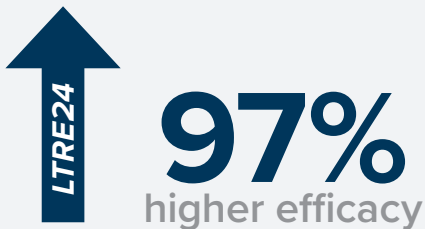


LTRE compared to fluorescent direct indirect fixture

LTRE provides efficacies up to 120% higher than conventional direct/indirect recessed products using perforated metal diffusers, and the high efficiency enclosed lens has no exterior facing ridges or perforations to collect dust. See below for LED comparison to conventional direct/indirect fluorescent fixture.

Fixture	Size	Package	Delivered Lumens	Watts	Efficacy
 PERF BASKET	2' x 2'	(2) 24W Lamps	2,500	54	46
 LTRE	2' x 2'	(ML) Medium Lumen LED	2,988	30	102
 PERF BASKET	2' x 4'	(2) 32W Lamps	3,900	58	67
 LTRE	2' x 4'	(LW) Low Watt LED	4,300	38	114

Delivered Lumens (above) shows the number of lumens that escape the fixture housing as useable light. Efficacy is the amount of lumens produced per each watt of power (lumens per watt). No light loss factors are applied to the data. Data is rounded.



Controls & Relight Applications

LTRE integrates with energy saving controls

LTRE integrates fully with lighting controls through the selection of the appropriate driver.



Driver	Definition	Operation	Light Delivery	Wiring	Manual Switch	Occupancy/Vacancy Sensor Compatible	Daylight Sensor
E	Fixed Output	On/Off	One Light Level	3-Wire (Hot, Neutral, Ground)	X	X	X*
ESD	Electronic Step Dimming	High/Low/Off	Two Light Levels	4-Wire (2 Hot, Neutral, Ground)	X	X	X
ED	Electronic Dimming	Continuous Dimming	Variable Light Levels	5-Wire (Hot, Neutral, Ground, plus (2) 0-10V Dimming Wires)**	X (Dimming Control Required)	X	X

\* For daylighting where select luminaires in the space are turned off when daylight level is appropriate.  
\*\* ED ballasts vary; wiring shown above is typical 2-wire low voltage control.

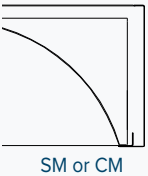
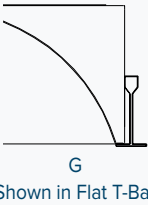


Incorporating Daylight Harvesting can save significant energy in both private offices and large, open areas where natural sunlight is present during operating hours. Energy savings from facility operations go directly to operating profit, making this an attractive element of any energy reduction strategy.

Relight Appropriate

LTRE can be easily installed into existing locations where product upgrades are planned. Three ceiling compatibility options offer a wide range of installation selections, allowing for LTRE to be used in one or more areas within a building or campus while maintaining the same superior performance and carrying a consistent aesthetic theme.

Ceiling Type	Compatible With	Nomenclature
T-Bar Grid	15/16" Grid, 9/16" Grid, Slot Grid	G
Surface Mount	Drywall, Wood, Other	SM
Cable Mount	T-Bar, Drywall, Other	CM







# Ordering Information

Example: LTRE24-35MLG-RFA-EDU

LTRE				
Model	Size	Color Temp	Delivered Lumens	Ceiling Type
LTRE Transition® Enclosed LED Deep Architectural Center Lens	22 2' × 2' 24 2' × 4'	30 3000K 35 3500K 40 4000K 50 5000K	LW Low Watt ML Medium Lumen HL High Lumen VL Very High Lumen XL Extra High Lumen¹	G Grid Lay-in² SM Surface Mount CM Cable/Suspended Mount³
RFA		U		
Shielding	Driver	Voltage	Options	
RFA Ribbed Frosted Acrylic	E Fixed Output ESD Fixed Output / Step Dimming ED 0-10V Dimming ED1 0-10V Dimming to 1%	U 120V-277V	ELL14 Emergency Battery Pack, 1400 Lumens⁴,⁵ GLR Fast Blow Fuse GTD Generator Transfer Device⁶ DTS Dimming Bypass Module¹⁷ C388 3-Wire Flex C488 4-Wire Flex C588 5-Wire Flex AM Antimicrobial Paint⁸ G1 Lens Gasketing WL Wet Label⁵ EOR End of Row (SM and CM only. Provides end wiring access for continuous row mounting.) INT Intermediate (SM and CM only. Provides end wiring access for continuous row mounting.) CP Chicago Plenum	

- Notes:
- 1 2x4 XL not available with ELL14 or DTS
  - 2 For drywall, order G with Flange Kit Accessory
  - 3 Order hanger accessories separately
  - 4 For compatibility with Dual-Lite LiteGear® inverters, contact Hubbell Lighting Representative
  - 5 Not available on Surface Mount or Cable Mount ceiling types
  - 6 GTD available for E (fixed output) driver option only
  - 7 For emergency circuit control loads including sensors and wireless systems CSA certified to UL 924. Only available with 0-10V drivers
  - 8 Optional antimicrobial paint (AM option) resists bacterial growth on exposed painted surfaces
- For questions about configuration options, contact Hubbell Representative

## Accessories (Order Separately)

FK22	2' × 2' Flange Kit
FK24	2' × 4' Flange Kit
CM48Y2SC3F-KIT	48" Cable Mount Kit for 2' wide Cable Mount fixtures, 3 Wire





ALERA LIGHTING

ARCHITECTURAL AREA LIGHTING

BEACON PRODUCTS

COLUMBIA LIGHTING

COMPASS

DUAL-LITE

HUBBELL CONTROL SOLUTIONS

HUBBELL OUTDOOR LIGHTING

KIM LIGHTING

KURT VERSEN

LITECONTROL

PRESCOLITE

**Columbia**  
LIGHTING

701 Millennium Blvd. Greenville, SC 29607  
Tel 864.678.1000  
[www.columbialighting.com](http://www.columbialighting.com)

co1092 Modified July 14, 2021

Copyright © 2021 Columbia Lighting, a division of Hubbell Lighting, Inc. All rights reserved. Please refer to online specifications for most up-to-date content as specifications are subject to change without notice.