

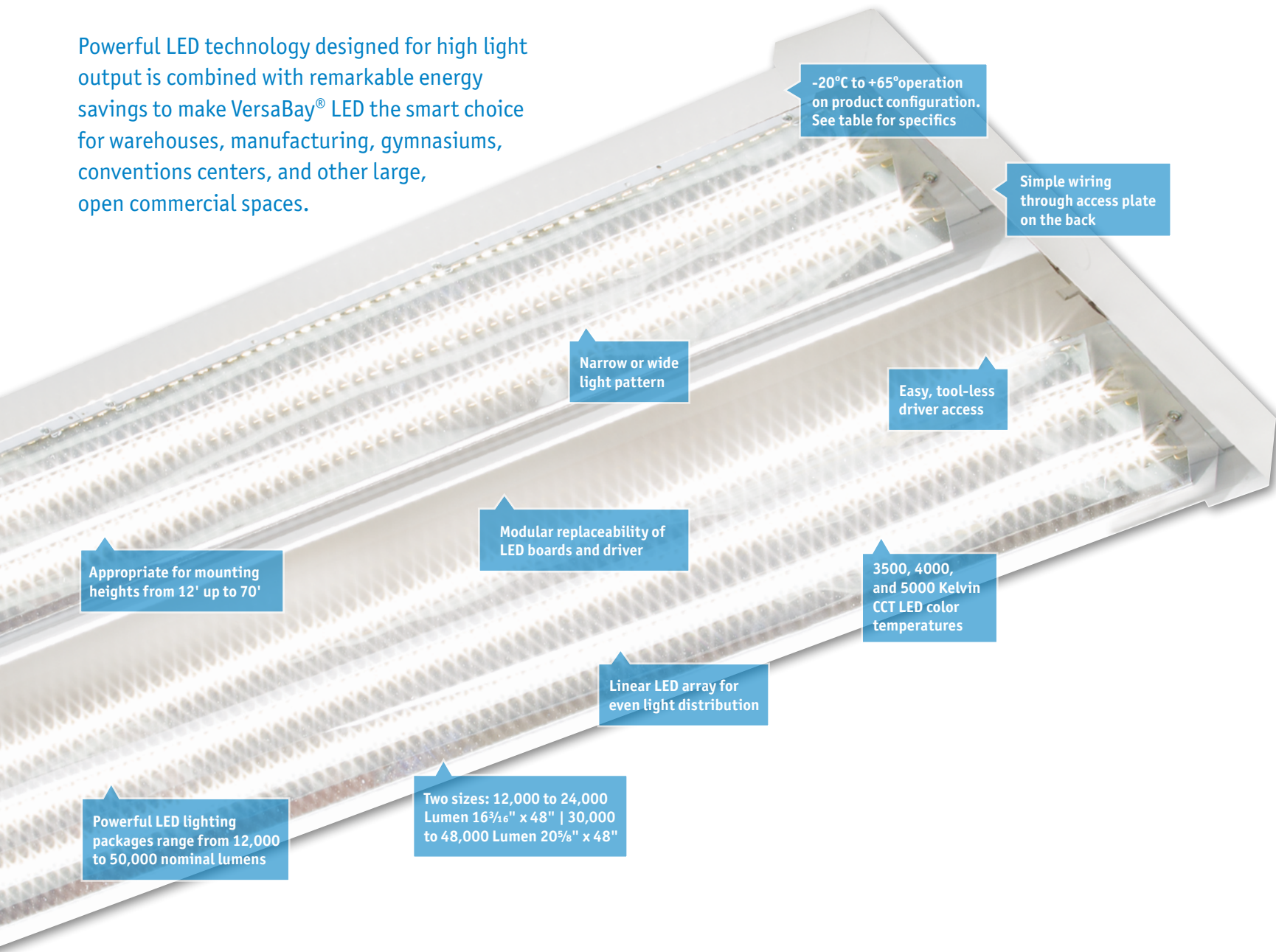


Columbia
LIGHTING

LLHV VERSABAY® LED HIGH BAY



Powerful LED technology designed for high light output is combined with remarkable energy savings to make VersaBay® LED the smart choice for warehouses, manufacturing, gymnasiums, conventions centers, and other large, open commercial spaces.



PRACTICAL AND VERSATILE OPTIONS



LLHV offers a wide range of options and accessories that can be shipped with the product or easily installed in the field. Sensors and cord sets are plug-and-play for ease of installation. Wire guard and occupancy/daylight sensor shown at left.

ALL THE RIGHT CHOICES

LUMENS PER WATT

Overall performance of LED lighting is measured in efficacy, or lumens per watt (LPW). LLHV maximizes lumens per watt to provide effective lighting, increase operating profit, and promote quick payback for relight projects.

WATTS

VersaBay® LED operates at low input wattage to reduce lighting power density and energy expense.

On average, VersaBay® LED uses:

- 48% less watts than metal halide
- 33% less watts than fluorescent
- 13% less watts than typical LED high bays

ROI

Simple payback analysis demonstrates that return on investment to replace HID sources is typically under two years. When utility rebates and maintenance savings are factored in, the payback is even more dramatic.

LONG LIFE

60,000 hours L80 lumen maintenance to take the stress out of facility maintenance.

DESIGNLIGHTS® CONSORTIUM QUALIFIED



DLC® (DesignLights Consortium) Qualified for utility rebate eligibility and specification compliance - see www.designlights.org.

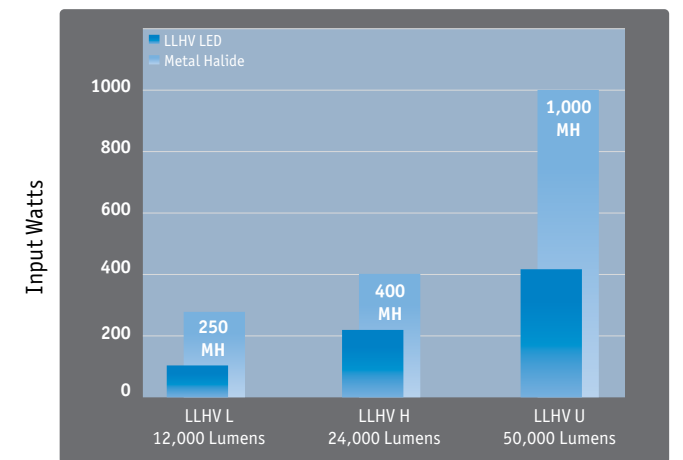
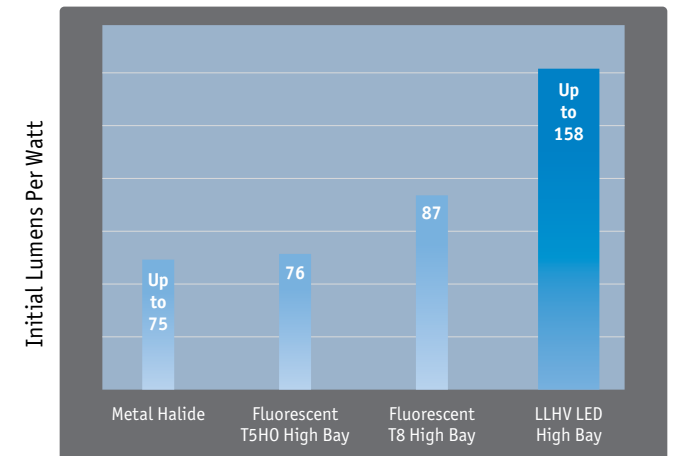
CONTROLS COMPATIBLE

LLHV offers occupancy, daylight sensing, 0-10v dimming, or ControlScope® enabled wireless radio options. Sensors can be ordered with the product or easily retrofitted later with plug-and-play connectivity.

AMBIENT OPERATING TEMPERATURE

LLHV operates in environments as low as -20°C and as high as +65°C. See specification sheet for configurations and details.

Drivers include 6kV surge protection. Fixture to be suspended a minimum of 28" from solid surface.



CASH FLOW POSITIVE



Hubbell Lighting's unique financing option, providing flexible and easy access funding solutions for commercial lighting projects. www.hubbellighting.com/resources/financing

CRI

LLHV provides 83+ CRI. Color rendering is important for crisp vision with clear detail recognition. When CRI is 80 or higher, labels stand out. It becomes easier to differentiate between different materials, textures and patterns. Whether it's a warehouse rack or a convention center with signage, CRI makes an important difference in lighting quality.

NARROW OR WIDE DISTRIBUTION

VersaBay® LED offers a choice of narrow distribution for stacks or wide distribution for open areas. Many LED High-Bay products do not offer this choice, and take a one-size-fits-all approach that does not provide good lighting in all areas.

GOOD FINANCIAL SENSE

VersaBay® LED provides excellent return on investment.

Luminaire	400W Metal Halide	LLHV High Lumen
Watts	455	194
Annual Energy Cost	438	187
Controls	—	Occupancy
Simple Payback	—	1 Year

8760 hours, in-aisle occupancy 25%, 0.11 kWh rate; estimated results shown for general information only. Estimate does not include utility rebates or maintenance savings.

**1.3 YEAR
ROI**

WAREHOUSE VersaBay® LED boosts operating efficiency by providing a well lit environment that meets all the critical needs of worker productivity at a fraction of the energy used by traditional lighting sources.

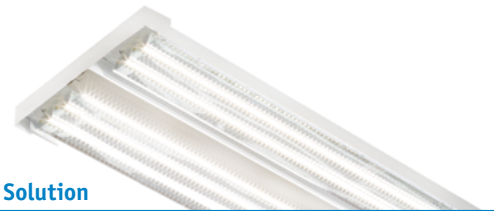


CRITICAL NEED

- Well lit racks
- Even, vertical illumination
- Visibility of labels
- Efficiency of operation

LLHV Solution

- Optically efficient linear LED array to reduce shadows
- Narrow distribution to focus light in rack areas
- 83 CRI color rendering
- Optional occupancy and daylighting controls



MANUFACTURING Productivity and maintenance benefits combined with energy savings make a substantial contribution to operating profit. VersaBay® LED improves productivity by providing comfortable, effective lighting, with very attractive ROI.

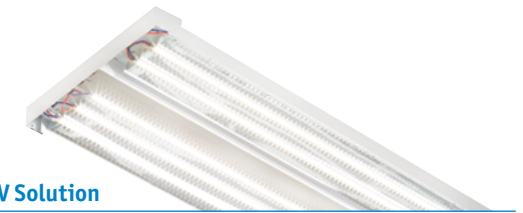


CRITICAL NEED

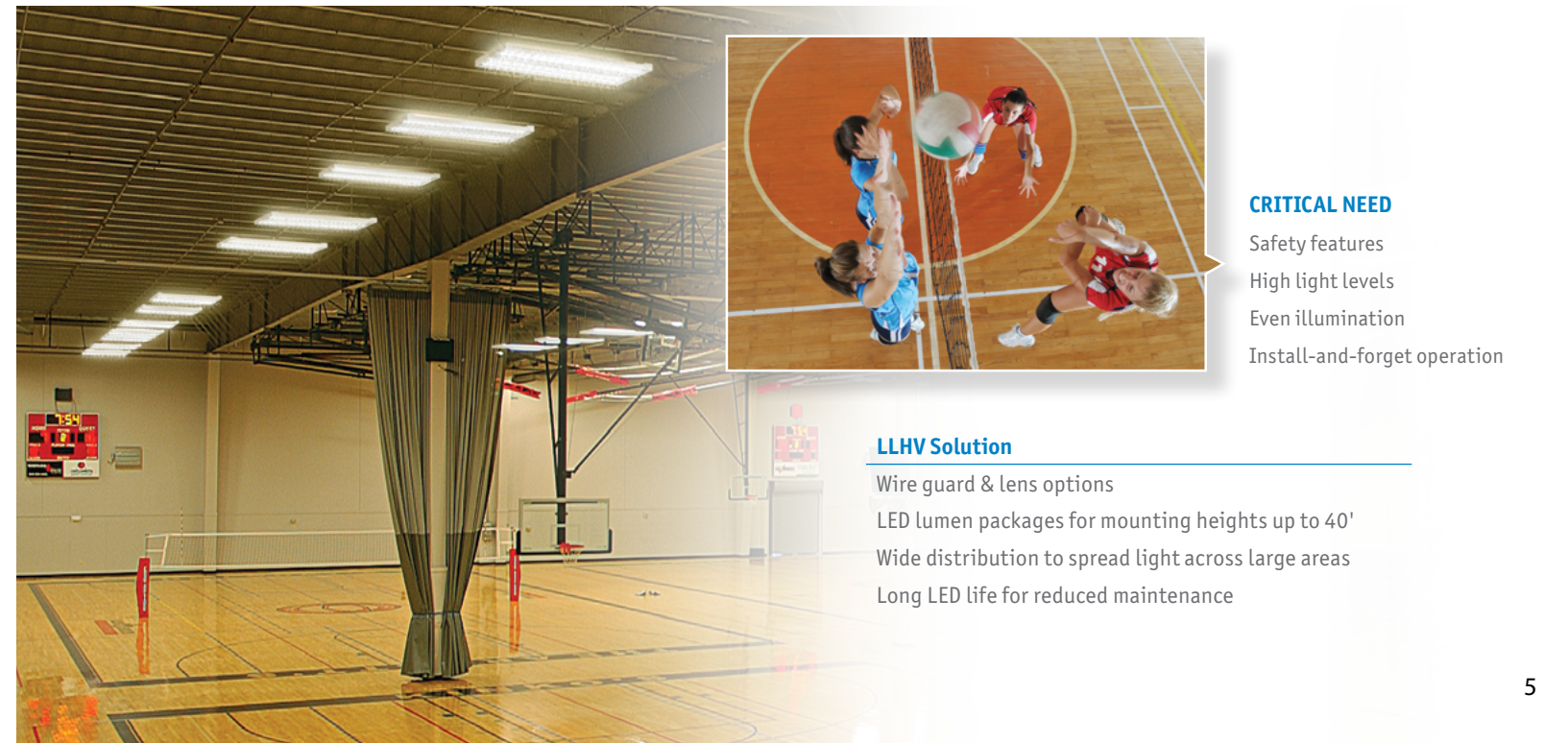
- Task visibility
- Lighting uniformity
- Ability to discern materials
- Wide temperature range

LLHV Solution

- Choice of lumen packages
- Wide/narrow distribution to light work & storage areas
- 83+ CRI color rendering
- Product configurations from -20°C to +65°C operation



GYMNASIUM VersaBay® LED meets the challenges of gymnasium lighting by providing all the right features to keep the gym attractive and efficient for many years, with a timely payback for the lighting investment.



CRITICAL NEED

- Safety features
- High light levels
- Even illumination
- Install-and-forget operation

LLHV Solution

- Wire guard & lens options
- LED lumen packages for mounting heights up to 40'
- Wide distribution to spread light across large areas
- Long LED life for reduced maintenance

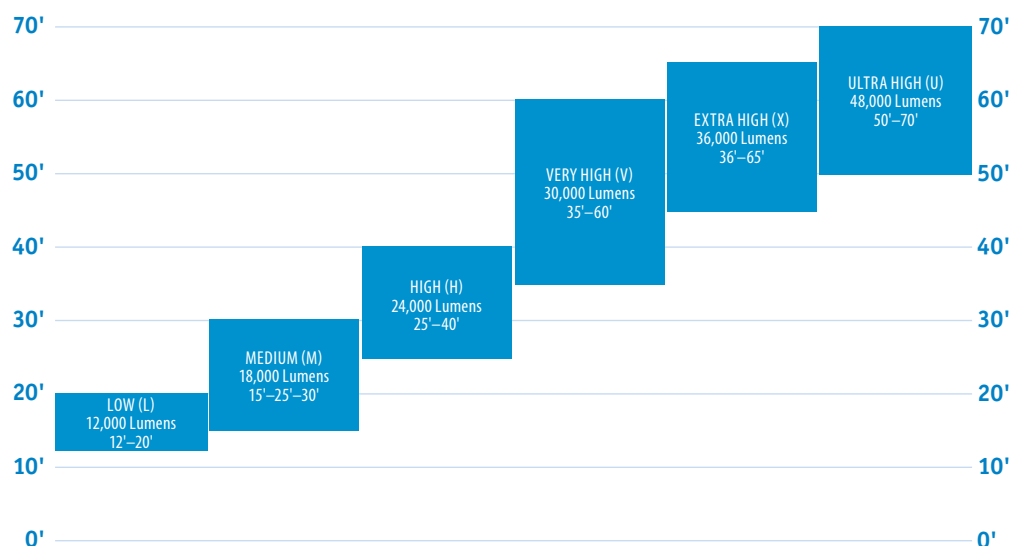
LLHV MOUNTING HEIGHT BY LUMEN PACKAGE

LLHV Narrow Distribution

LLHV Wide Distribution



L (12,000)	M (18,000)	H (24,000)	V (30,000)	X (36,000)	U (48,000)
------------	------------	------------	------------	------------	------------



Mounting Height

150/250 MH	250/400 MH	400 MH	400-750 MH	750-1,000 MH	1,000 MH	Replaces	HID
2T5HO	4T5HO	6T5HO					Fluorescent T5HO
4T8	6T8	8T8					Fluorescent T8

Matrix above is provided as a general guideline only. Mounting height information shown above applies to both narrow and wide distributions. Each application should be individually evaluated with lighting design software to confirm light levels. Photometric files are available at columbialighting.com

OPERATING TEMPERATURE

LLHV ambient operation is between -20°C and +65°C according to product configuration and rated life. See specification sheet at columbialighting.com for details.

Lumen Package	Maximum Ambient Operating Temperature			
	No Lens		Lens	
	No ELL14	ELL14	No ELL14	ELL14
L	65	45	60	45
M	55	45	50	45
H	55	45	50	45
V	55	45	50	45
X	55	45	50	45
U	55	45	50	45

ORDERING INFORMATION

LLHV 4 - [] - [] - [] - **ST** - [] - [] - []

MODEL LLHV VersaBay® LED High Bay	COLOR TEMP 35 3500 40 4000 50 5000	REFLECTOR N Narrow Distribution W Wide Distribution	DRIVER E Fixed Output ED 0-10V Dimming	OPTIONS
SIZE 4 4'	LUMEN OUTPUT L Low Watt M Medium Lumen H High Lumen V Very High Lumen X Extra High Lumen U Ultra High Lumen Lumen output varies fixture width, see cross section drawings	UPLIGHT ST Solid Top (no uplight)	VOLTAGE U 120V-277V 347 347V ⁹ 480 480V ⁹	

PRODUCT AVAILABILITY

LUMEN PACKAGE	NOMINAL LUMENS	NOMINAL WATTS	EFFICACY
L	12,060 - 13,557	89	152
M	14,416 - 20,340	138	147
H	19,917 - 26,837	195	158
V	27,268 - 34,964	245	143
X	32,502 - 39,650	287	138
U	37,936 - 52,434	368	142

Actual lumens will vary according to color temperature and other factors. For exact lumens and watts see specific photometric test(s).

MAX. AMBIENT OPERATING TEMP.

LUMEN PACKAGE	NO LENS		LENS	
	No ELL14	ELL14	No ELL14	ELL14
L	65	45	60	45
M	55	45	50	45
H	55	45	50	45
V	55	45	50	45
X	55	45	50	45
U	55	45	50	45

ELL14: Factory installed emergency battery pack, 1400 lumens

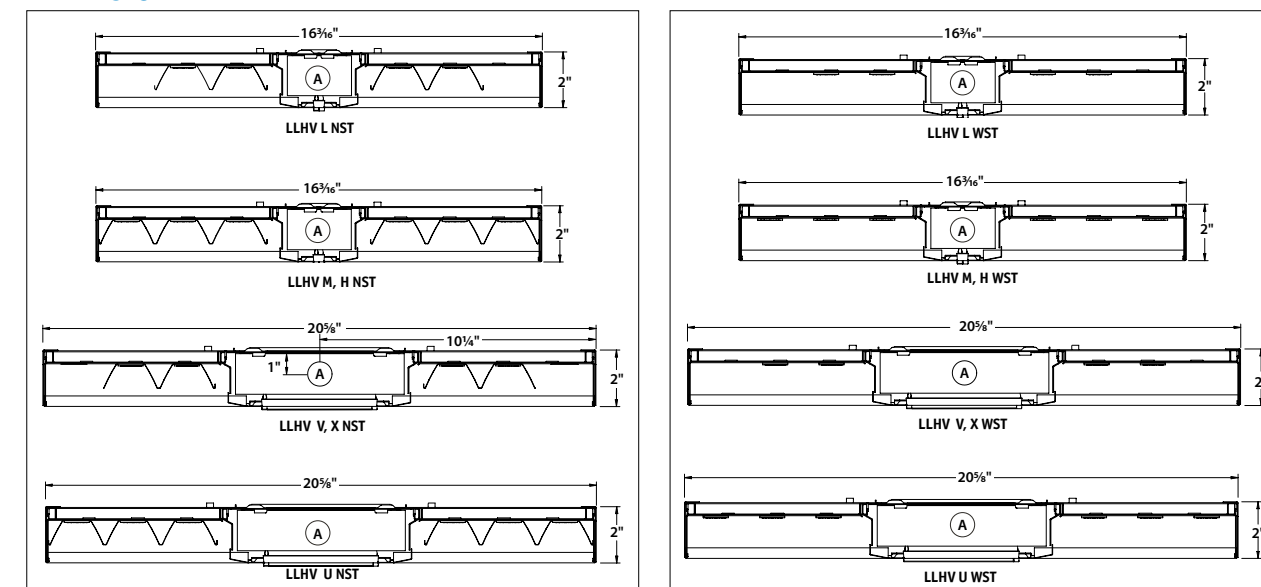
MAX. AMBIENT OPERATING TEMP. (347V/480V)

LUMEN PACKAGE	NO LENS		LENS	
	No ELL14	ELL14	No ELL14	ELL14
L	55	NA	40	NA
M	45	NA	35	NA
H	45	NA	35	NA
V	C.F.*	NA	C.F.*	NA
X	C.F.*	NA	C.F.*	NA
U	C.F.*	NA	C.F.*	NA

ELL14: Factory installed emergency battery pack, 1400 lumens
*Consult Factory

- ¹ Side panels increase height to 2 1/2".
- ² Lens reduces max ambient operating temperature (see table).
- ³ Using a Wire Guard may cause shadowing.
- ⁴ Side panels only; does not include lens or wire guard options.
- ⁵ ELL14 reduces max ambient temperature (see table).
- ⁶ Not available with 347V or 480V.
- ⁷ For use only with L, M, H Lumen packages.
- ⁸ Registered trademark of Daintree Networks, used by permission.
- ⁹ Consult factory for V, X, U lumen packages.
- ¹⁰ Not available with ELL14.
- ¹¹ Consult manufacturer for compatibility.

DIMENSIONAL DATA





ARCHITECTURAL AREA LIGHTING

BEACON PRODUCTS

COLUMBIA LIGHTING

COMPASS

DUAL-LITE

HUBBELL CONTROL SOLUTIONS

HUBBELL OUTDOOR LIGHTING

KIM LIGHTING

KURT VERSEN

LITECONTROL

PRESCOLITE

Columbia
LIGHTING

701 Millennium Blvd. Greenville, SC 29607
Tel 864.678.1000
www.columbialighting.com

CO1075 Revised 02/22

Copyright © 2022 Columbia Lighting, a division of Hubbell Lighting, Inc. All rights reserved. Please refer to online specifications for most up-to-date content as specifications are subject to change without notice.