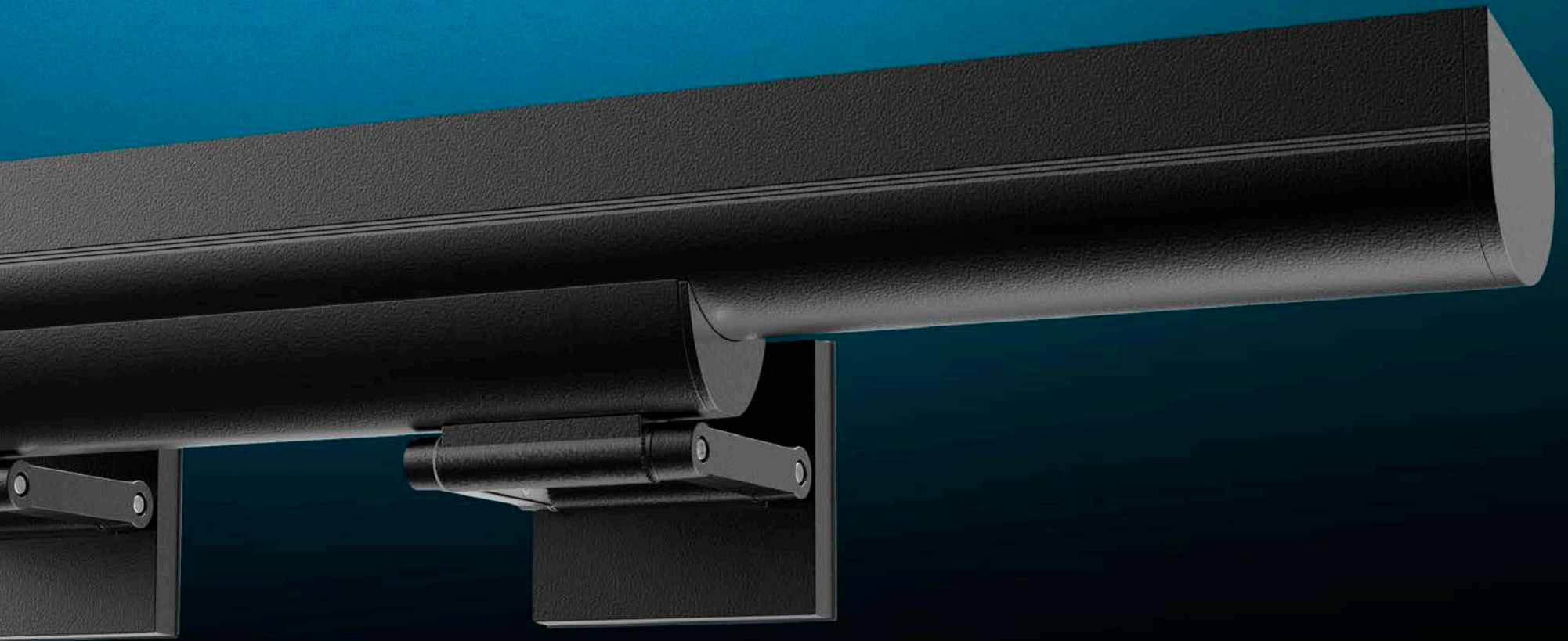


intent

linear floodlights



intent

linear floodlights

The Intent linear floodlight family joins Kim Lighting's extensive floodlight collection. This compact architectural linear flood provides optimal appearance and performance for exterior wall washing, grazing or sign lighting applications in static white, RGBW and RGBA configurations.

Model	White (lm)	RGBW (lm)	Height
INT2	24L-30: 3,000 lm	12L-15	2'
	24L-35: 4,000 lm		
	24L-60: 6,000 lm		
INT3	36L-40: 4,500 lm	18L-35	3'
	36L-60: 6,000 lm		
	36L-95: 9,000 lm		
INT4	48L-55: 6,000 lm	24L-40	4'
	48L-80: 8,000 lm		
	48L-125: 12,000 lm		

Images above shown with wall mount



the intent is seamless variety

The wide array of distributions offered allow for completely different effects to be shown, even in the same application. Narrow distribution provides a subtle accent to highlight the architectural details surrounding the windows, while the wide flood bathes the façade dramatically in bands of light drawing eyes upward.



WIDE FLOOD



NARROW

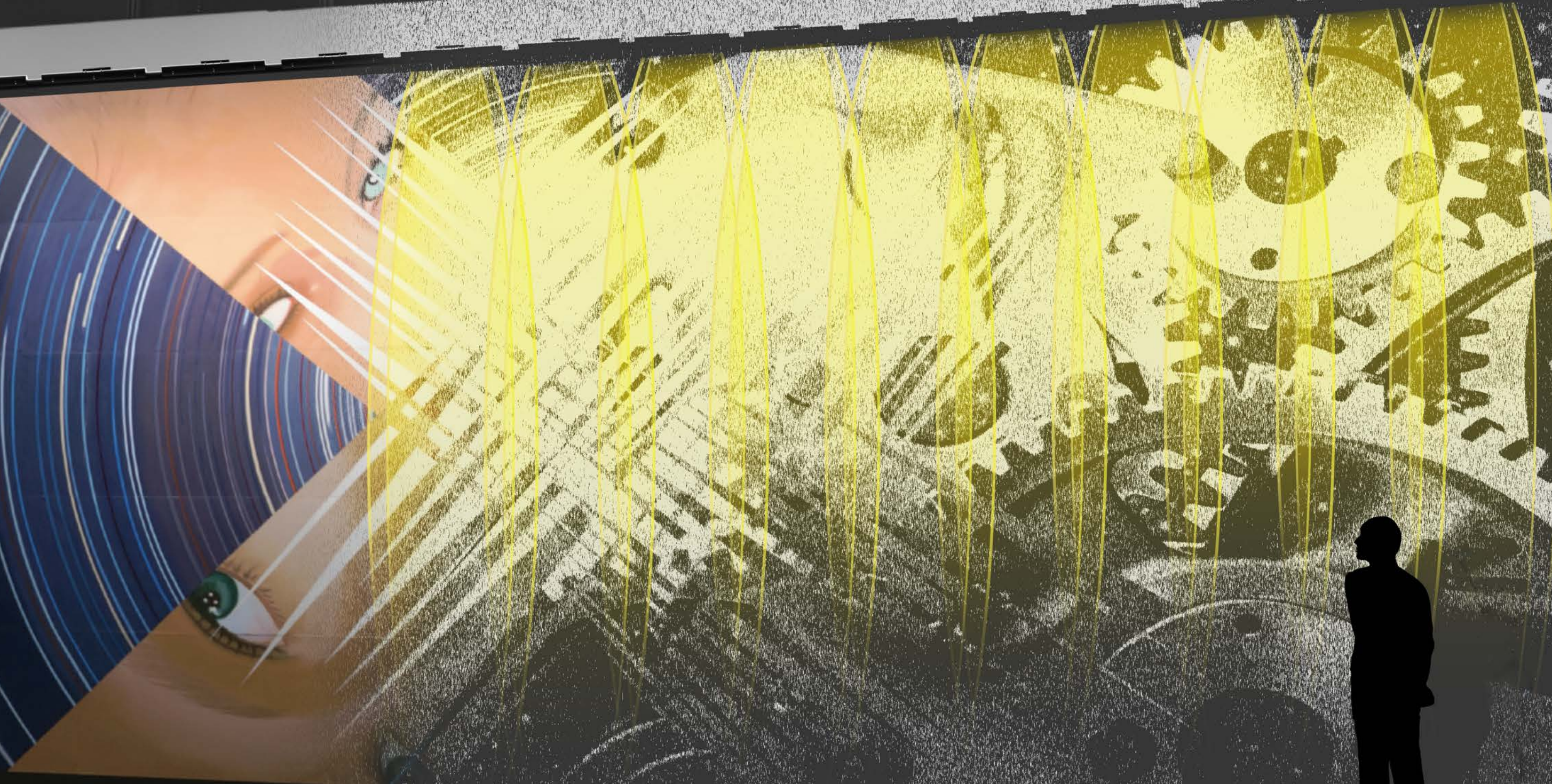
4'
Wide
Flood

2'
Narrow

the intent is

uniformity

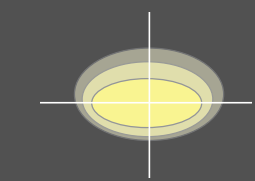
Wall wash distribution creates a uniform lit appearance even with a minimal 12" setback. The optic creates an asymmetric pattern that allows for light to skim the surface without the luminaire being tilted. This allows for an even distribution of light across the surface.



the intent is
dramatic texture



Wall Graze distribution enhances textures and provides more drama to a space. The wide 33° horizontal angle provides a beautiful blending of colors from fixture to fixture, while the narrow 8° vertical angle creates shadows on the illuminated surface.

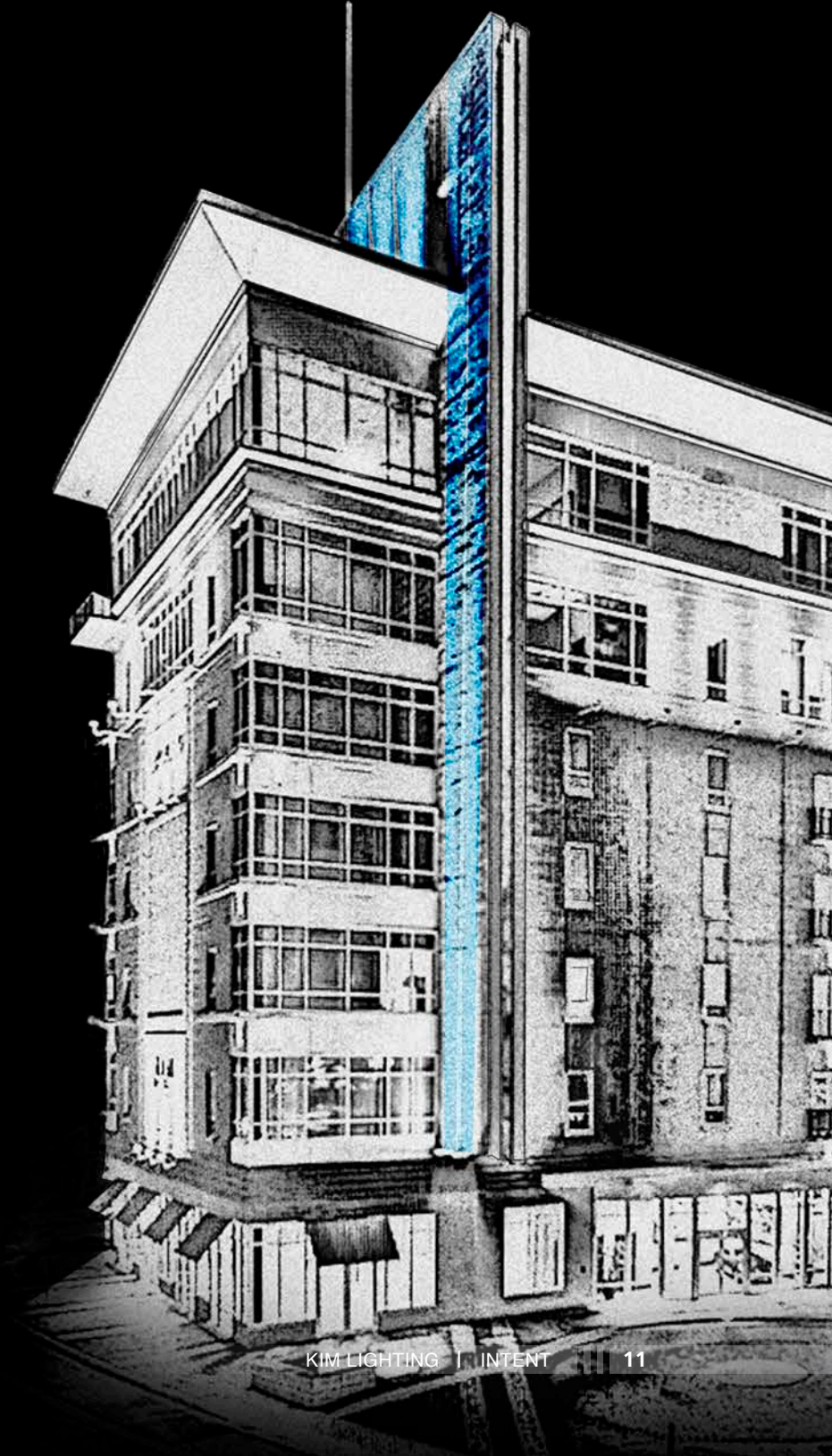


WALL GRAZE



the intent is narrow throw

Narrow Spot distribution has up to a 141,785 center beam candlepower out of a 7° distribution, which makes it ideal for throwing colorful pillars of light up skyscrapers or bridges.



the intent is connectivity

This innovative design allows for linear fixture runs without ever having to open the luminaire and expose it to the elements. This is achieved by connecting an IP68 rated cord between two sealed driver compartments. An architectural cover is also offered to shield the cord and continue the seamless appearance of the luminaire.

Narrow
(17x17)



Narrow Medium
(30x30)



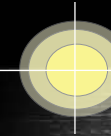
Medium Flood
(63x63)



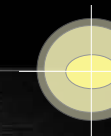
Wide Flood
(80x80)



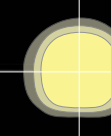
Wall Wash
(30x20)



Wall Graze
(52x12)



Horizontal Flood
(54x24)



10' Set Back

IES static white distributions

IES RGBW

distributions



Narrow Spot (7x7) Spot (11x11) Narrow (15x15) Narrow Medium (23x23) Medium (33x33) Medium Flood (54x54) Wall Graze (33x8)

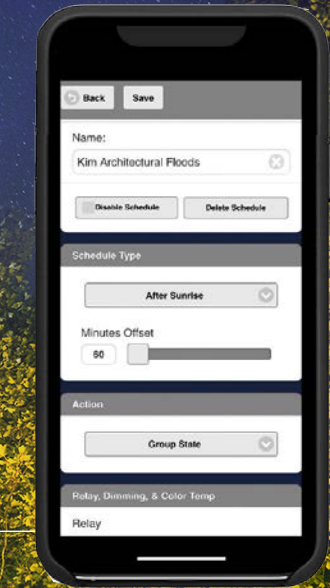


static white

control options

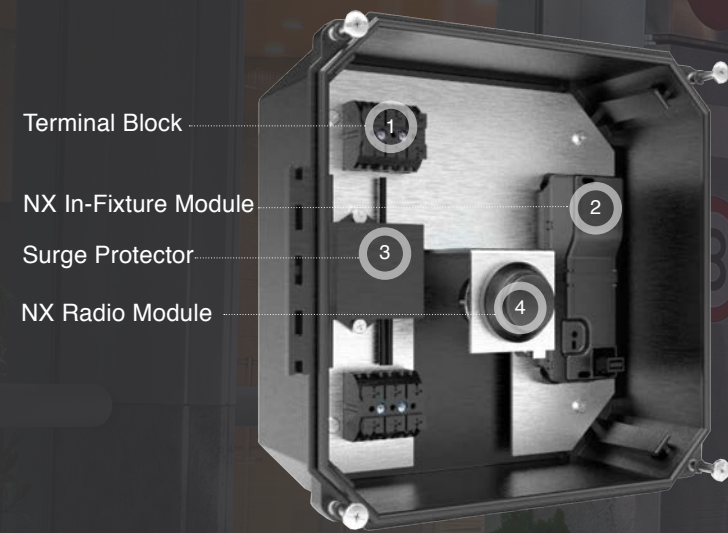
Luminaires enabled with NX Distributed Intelligence™ wireless radios create an intelligent mesh network with the interior controls. Groups are dimmed via an astronomical time clock and schedules can be updated at any time with the Bluetooth® commissioning app.

NX DISTRIBUTED INTELLIGENCE™



NX Enabled Remote Mount Enclosure

The NXWE-RME is a remote, wall mount enclosure that can be wired to the Intent luminaires for mounting flexibility.



NX is not compatible with RGBW or RGBA configurations of the Intent.

Static white configurations are not compatible with DMX

color control options

Bluetooth[®] DMX



1. Intent

Pair the Intent with the full family of Kim Lighting color changing products to create a dynamic, ever-changing application.

2. Pavilion

Pavilion bollard is available in round and square configurations. An integral NEMA 3R enclosure, 2-Gang recessed box, and Bluetooth[®] RGBW accent are just a few of the defining features of Pavilion.

3. Kim Floodlight

The Kim Architectural Flood Collection consists of three sizes of flood fixtures in both static white and RGBW configurations.

4. LTV8

The Lightvault is a versatile in-grade luminaire that is available in 8, 10 and 13 inch diameters.

Bluetooth[®]

Kim Lighting's exclusive Bluetooth[®] app provides a cost-effective way to set color, add presets, dim the luminaires, or even pull specific colors from a photograph.

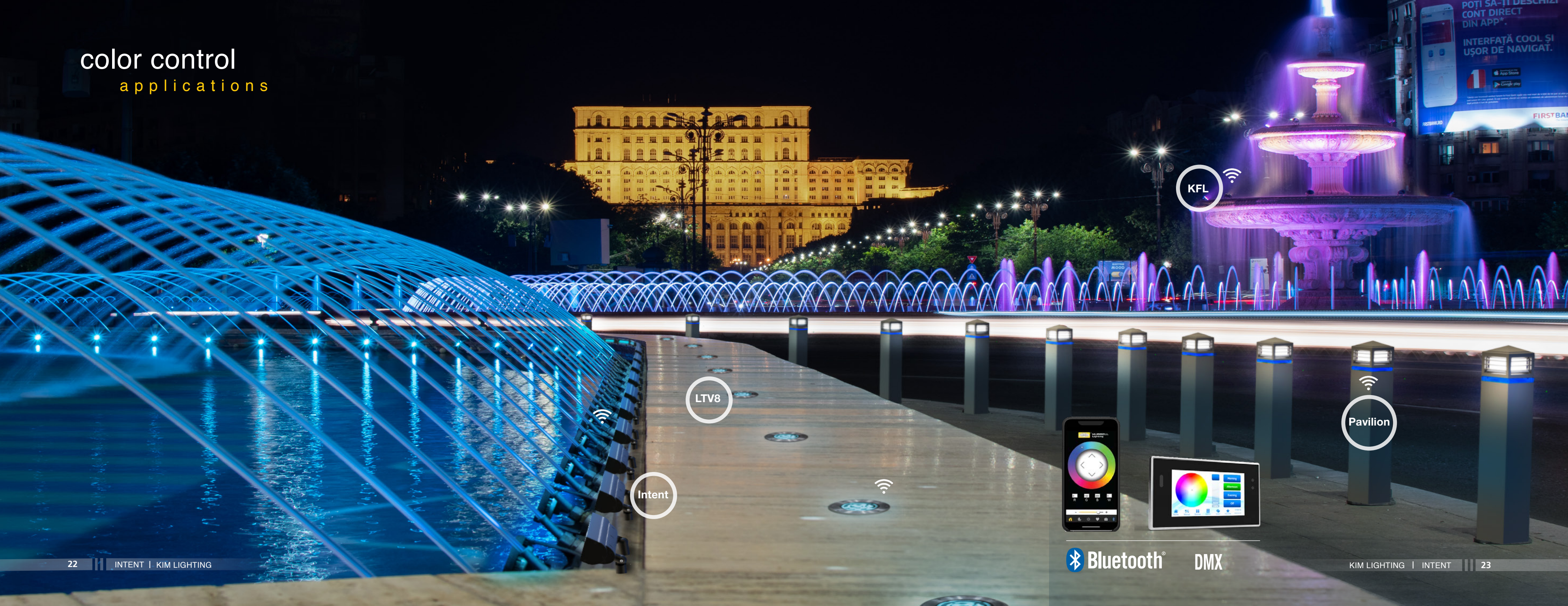


DMX

A new partnership with Pharos[®] Controls now allows Kim Lighting to offer a full suite of DMX interface controls. See the Pharos[®] Spec Sheet for more details.



color control applications



KFL

LTV8

Intent

Pavilion



Bluetooth[®] DMX

engineered excellence

- 1 Luminaire form integrates a three band design element that is replicated on a variety of Kim Lighting luminaires to provide a complete and coordinated site offering.
- 2 Luminaire is designed for wall or ground mounting applications. Each mounting utilizes specially designed knuckles that integrate into the luminaire design.
- 3 The integral visor provides shielding of the LEDs for an improved appearance after installation without any bulky bolt-ons.
- 4 Multi-Die LEDs allow for seamless color blending when paired with our blended optics.
- 5 The Intent color changing flood is unique in it's optical approach. All color mixing takes place within the optic to ensure a uniform color is shown on the desired surface.
- 6 Glass lens protects internal components with a clean, high quality finish. Additional louvers available to provide glare control.
- 7 Connection accessories allow fixtures to create a seamless run of product without the need to open the luminaire.

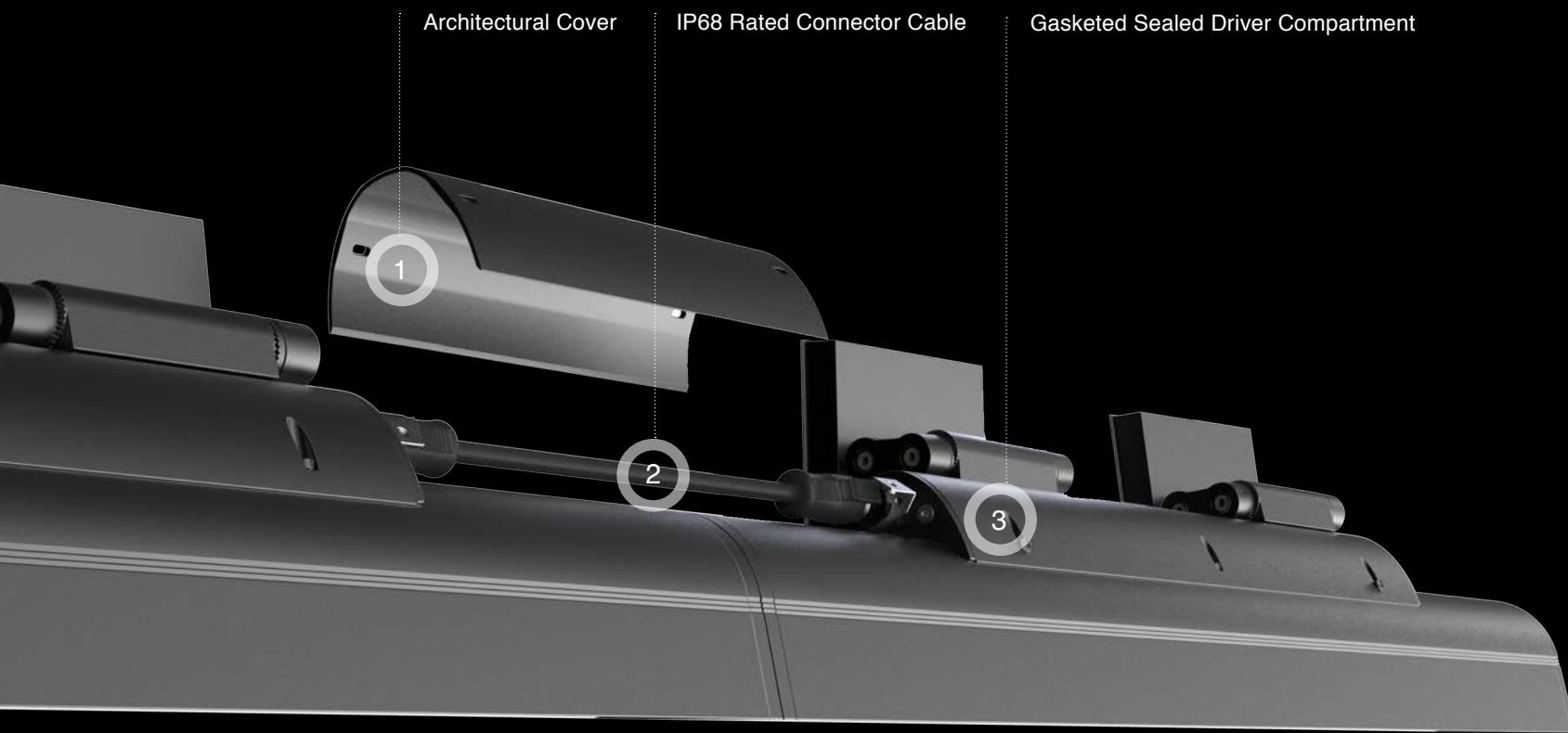
Internal Features

Thermal fold-back dims the fixture in the chance it sees too high of temperatures. This feature protects the components from over-heating which would decrease the life of the luminaire.

Standard 10kA 20kV surge suppression provides an enhanced level of protection against power spikes and surges for ultimate peace of mind and long-term luminaire operation.

connection options

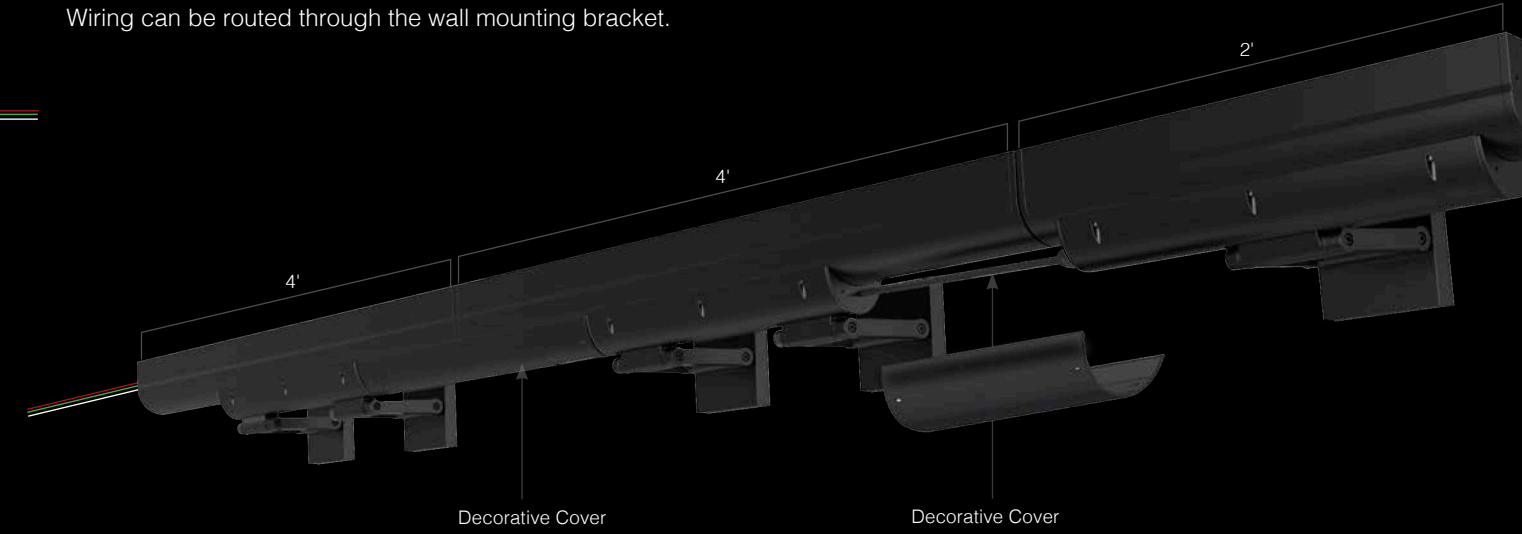
Connection for Continuous Run



Arm

Mounting Bracket

Wiring can be routed through the wall mounting bracket.



Cable Ready

Wiring can be mounted through a cable on the side of the driver compartment. If this option is chosen, fixture will automatically come with connectors on both sides of the fixture.



Left Mounting and Cable Ready

Both above wiring configurations can be combined to create the configuration shown here.

Knuckle

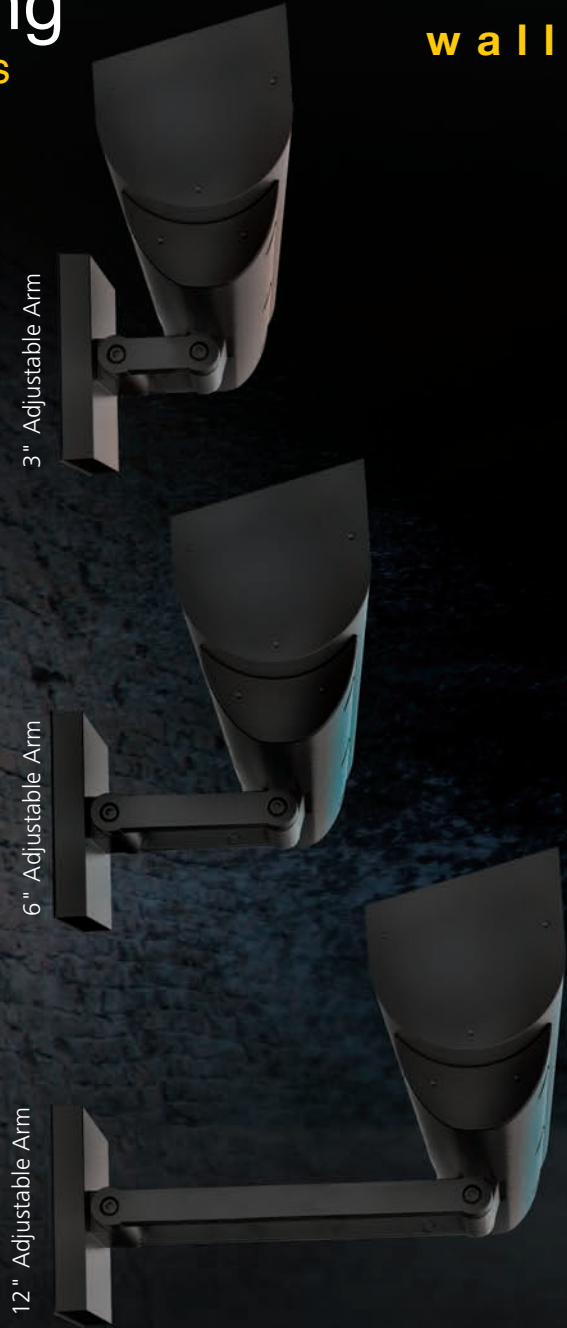
Left Mounting

Wiring can be routed through the left or right knuckle.



mounting options

wall mount



ground mount

Portable Spear Mount (J-25N)

Cast iron with 1/2" NPSM fixture mount. Hot dip galvanized finish. 5.5 cu in. splice compartment. (SJTW-A) 3-wire cord and plug. Supplied with (3) wire nuts and (3) mastic seals for waterproofing connections. 9' cord length.

Brass In-Grade Architectural Junction Box (JBR) (Threaded Knuckle Mount Only)

Die-cast brass with 1/2" NPSM fixture mount and die-cast cover. Internal set screw provided for locking position. 21 cu in. internal volume.

Note: All side taps provided with plugs. Creates a flush-mounted appearance. May be cast in concrete for increased stability.

JBR-2 (2) 1/2" NPT in bottom JBR-3 (2) 3/4" NPT in bottom JBR-21 (2) 1/2" NPT in sides, (2) 1/2" NPT in bottom JBR-24 (4) 1/2" NPT in sides, (4) 1/2" NPT in bottom.

Architectural Junction Box (JB1) (Threaded Knuckle Mount Only)

Die-cast aluminum with 1/2" NPSM fixture mount. Internal set screw provided for locking position. Two 1/2" NPSM in bottom, 17 cu in. internal volume.

Specify finish: BL - Black, DB - Dark Bronze, GT - Graphite
Example: JB1/GT

Stanchion Mount (SM18) (Threaded Knuckle Mount Only)

3" O.D. by .188" wall cast low copper (<0.6% Cu) aluminum with 1/2" NPSM fixture mount and hand hole with flush cover. Internal set screw fixture lock accessible through hand hole. Internal ground lug supplied with installed lead.



Visit www.aal.net for other available mounting options

ordering

White & RGBW

HOUSING	LENGTH	LIGHT ENGINE	CCT	BEAM SPREAD	VOLTAGE	MOUNTING	CABLE READY	INPUT WIRING	COLOR	OPTIONS
White INT Flood Luminaire	2 2 Foot	WHITE 24L-30 24LED, 30W, 3,000 lm	WHITE 5K7 5000K, 70 CRI	N Narrow	UNV Universal 120-277V	K Threaded Knuckle	CR Cable Ready	LM Left Mounting	BL Black	SF Single Fuse (120/277/347)
		24L-35 24LED, 40W, 4,000 lm	5K8 5000K, 80 CRI	NM Narrow Medium	347 347V	A3 3" Adjustable arm	NCR Non Cable Ready	RM Right Mounting	DB Dark Bronze	DF Double Fuse (208/240/480)
		24L-60 24LED, 60W, 6,000 lm	5K9 5000K, 90 CRI	MF Medium Flood	480 480V	A6 6" Adjustable arm		MB Mounting Bracket ¹	GT Graphite	DL Diffused Lens ²
	3 3 Foot	36L-40 36LED, 40W, 4,500 lm	4K7 4000K, 70 CRI	WF Wide Flood	HF Horizontal Flood				LG Light Gray	LVR Louver
		36L-60 36LED, 60W, 6,000 lm	4K8 4000K, 80 CRI	WG Wall Graze	WW Asymmetric Wall Wash				PS Platinum Silver	MGF Marine Grade
		36L-95 36LED, 95W, 9,000 lm	4K9 4000K, 90 CRI						TT Titanium	PC Button Photocontrol
	4 4 Foot	48L-55 48LED, 55W, 6,000 lm	3K7 3000K, 70 CRI						WH White	
		48L-80 48LED, 80W, 8,000 lm	3K8 3000K, 80 CRI						CC Custom Color ⁴	
		48L-125 48LED, 125W, 12,000 lm	3K9 3000K, 90 CRI							

HOUSING	LENGTH	WATTS	CCT	BEAM SPREAD	VOLTAGE	MOUNTING	CABLE READY	INPUT WIRING	COLOR	OPTIONS	ACCESSORIES
RGBW INT Flood Luminaire	2 2 Foot	RGBW 12L-15 15W	RGBW RGBW 6500K	NS Narrow Spot	UNV Universal 120-277V	K Threaded Knuckle	CR Cable Ready	LM Left Mounting	BL Black	SF Single Fuse (120/277/347)	J-25N Stake
		3 3 Foot	18L-35 35W	SP Spot	347 347V	A3 3" Adjustable arm	NCR Non Cable Ready	RM Right Mounting	DB Dark Bronze	DF Double Fuse (208/240/480)	JB1 Architectural Junction Box
	4 4 Foot	24L-40 40W	RGBA RGBA 590nm ⁵	N Narrow	480 480V	A6 6" Adjustable arm		MB Mounting Bracket ¹	GT Graphite	MGF Marine Grade	JBR Composite In-Grade Architectural Junction Box
			M Medium	WF Wall Graze			A12 12" Adjustable arm			PS Platinum Silver	PC Button Photocontrol
			MF Medium Flood					LG Light Gray		SM18 Stanchion Mount	INT-CK23 2ft-3ft Connector Kit
			Note: RGBW configuration utilizes a multi-die chip consisting of a red (625nm), green (525nm), blue (453nm) and white (6500K CCT) LEDs.					PS Platinum Silver		INT-C2FT 2ft Connector Cable	INT-CK24 2ft-4ft Connector Kit
			Note: RGBA configuration utilizes a multi-die chip consisting of a red (625nm), green (525nm), blue (453nm) and amber (590nm) LEDs.					TT Titanium		INT-C3FT 3ft Connector Cable	INT-CK33 3ft-3ft Connector Kit
								WH White		INT-C4FT 4ft Connector Cable	INT-CK34 3ft-4ft Connector Kit
								CC Custom Color ⁴		INT-C5FT 5ft Connector Cable	INT-CK44 4ft-4ft Connector Kit
										INT-C10FT 10ft Connector Cable	



¹ Only available with 2ft adjustable arm
² Only available with WF on static white configuration
³ Not Turtle Friendly
⁴ Contact factory
⁵ Only available with static white configurations



ARCHITECTURAL AREA LIGHTING

BEACON PRODUCTS

COLUMBIA LIGHTING

COMPASS

DUAL-LITE

HUBBELL CONTROL SOLUTIONS

HUBBELL INDUSTRIAL LIGHTING

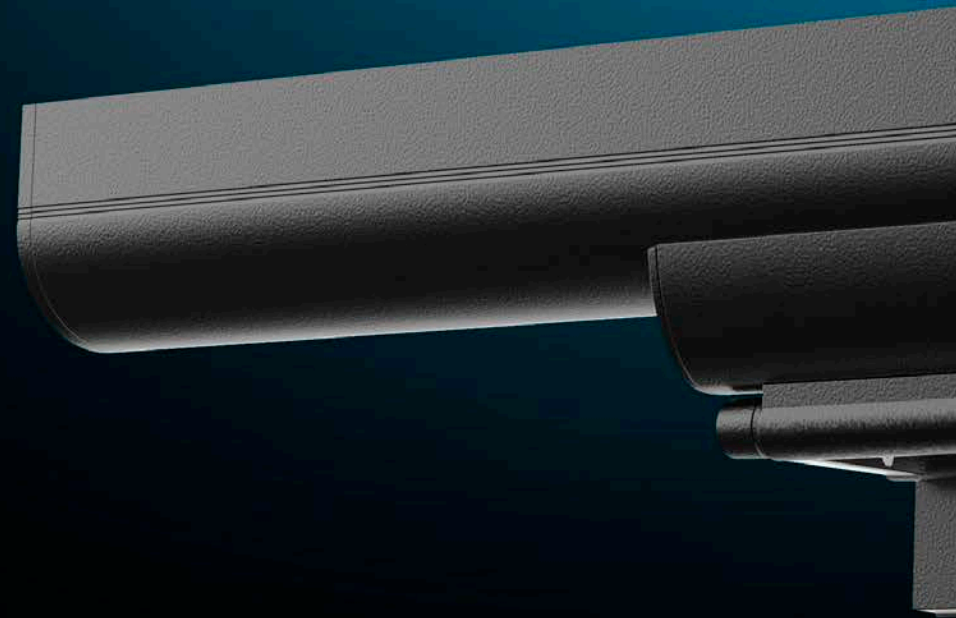
HUBBELL OUTDOOR LIGHTING

KIM LIGHTING

KURT VERSEN

LITECONTROL

PRESCOLITE



KIMLIGHTING

17760 Rowland Street
City of Industry, CA 91748
kimlighting.com

Kim-006 09/01/2020 Edition 1

Copyright © 2020 Kim Lighting, a division of Hubbell Lighting, Inc. All rights reserved. Please refer to online specifications for most up-to-date content as specifications are subject to change without notice.