



PGL8

EDGE - LIT

KIMLIGHTING

 **HUBBELL**
Lighting

PGL8

the legacy continues...

Nearly three decades ago, Kim Lighting set the bar for parking garage lighting with the introduction of the PGL. This innovative product was the first to offer an integrated, direct/indirect luminaire purposely designed for modern parking garage facilities.

This rich legacy of leading edge innovation and performance continues with PGL8. With an Edge-Lit Drop Lens, sleek form and a broad offering of control solutions, Kim Lighting raises the bar again for parking garage illumination.



distributions

THE CHALLENGE

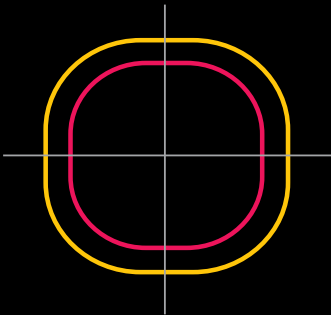
There are a variety of challenges in lighting a parking garage including effective illumination of drive lanes, ramps, parking areas, entrances/exits, elevator banks and stairwells while minimizing spill light.

THE SOLUTION

The PGL8 is available with four distributions and six lumen outputs to provide effective solutions for meeting the dynamics and challenges of parking garage applications including IES recommendations.

5Q (TYPE V SQUARE)

A true square distribution pattern ideal for typical parking garage applications at 8-12' mounting heights. This distribution is designed for optimal luminaire spacing and improved uniformity throughout the space.



Lumen Range	4,500 lm – 13,500 lm	
Mounting Height 9ft	1FC	0.5FC

Catalog Number	Average (fc) Horizontal	Max (fc) Horizontal	Min (fc) Horizontal	Uniformity Max/Min
PGL8-5Q-128L-85-5K7				
Kim Lighting	4.8	11.9	1.9	6:1
RP-8-18			1	10:1

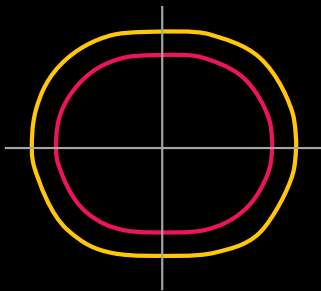
RP-8-18 Recommended Horizontal Maintained Illuminance Values for Parking Garage Facilities.
30x30ft fixture spacing at a 9ft mounting height



Two Lane Parking Garage

5R (TYPE V RECTANGULAR)

Often utilized for applications where the luminaires are mounted directly above the drive lane providing increased lateral light projection while reducing high angle light and glare along the drive lane.



Lumen Range	4,500 lm – 13,500 lm	
Mounting Height 9ft	1FC	0.5FC

Catalog Number	Average (fc) Horizontal	Max (fc) Horizontal	Min (fc) Horizontal	Uniformity Max/Min
PGL8-5R-128L-85-5K7				
Kim Lighting	6.7	15.4	1.9	8:1
RP-8-18			1	10:1

RP-8-18 Recommended Horizontal Maintained Illuminance Values for Parking Garage Facilities.
20ft fixture spacing at a 9ft mounting height



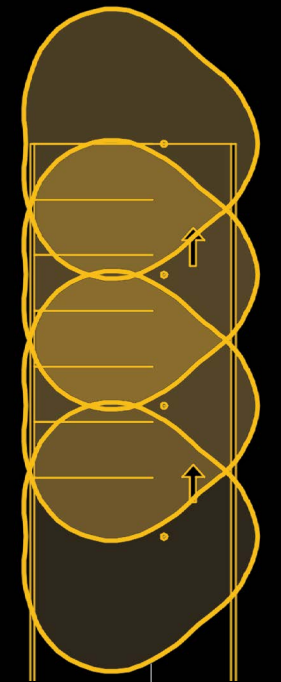
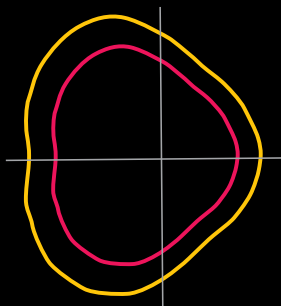
One Lane Parking Garage

distributions

Continued

ASY (ASYMMETRIC - TYPE IV)

Commonly used along drive lanes with one way traffic for optimal visual comfort or for spill light control along the perimeter of open parking garages to minimize light trespass.



Lumen Range	4,500 lm – 7,500 lm	
Mounting Height 9ft	1FC	0.5FC

Catalog Number	Average (fc) Horizontal	Max (fc) Horizontal	Min (fc) Horizontal	Uniformity Max/Min
PGL8-ASY-64L-90-5K7				
Kim Lighting	5.5	9.9	2.7	4:1
RP-8-18			1	10:1

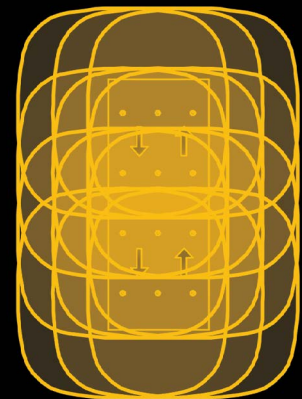
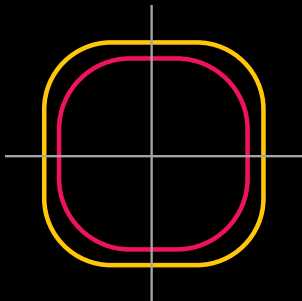
RP-8-18 Recommended Horizontal Maintained Illuminance Values for Parking Garage Facilities.
30x30ft fixture spacing at a 9ft mounting height



One Lane Ramp Parking

5C (TYPE V CONCENTRATED)

Designed for parking garage entrances where higher light levels are required in order to transition from higher ambient light levels outside of the parking garage to lower light levels inside the garage. The type V concentrated distribution can also be utilized for higher ceiling/mounting height applications of 12-20'+.



Lumen Range	4,500 lm – 13,500 lm	
Mounting Height 9ft	1FC	0.5FC

Catalog Number	Average (fc) Horizontal	Max (fc) Horizontal	Min (fc) Horizontal	Uniformity Max/Min
PGL8-5C-128L-85-5K7				
Kim Lighting	91.7	117.6	57.5	2:1
RP-8-18			1	10:1

RP-8-18 Recommended Horizontal Maintained Illuminance Values for Parking Garage Facilities.
30x30ft fixture spacing at a 9ft mounting height



Two Lane Entrance Way



engineering
excellence

FORM

Two-piece, die-cast aluminum housing design

Edge-Lit Drop Lens for optimal performance and visual comfort

No visible hardware enhancing the aesthetic

Sleek, low profile design with an attractive round form and 16" diameter

PERFORMANCE

Precise optical control up to 125 lumens per watt with four distinct distributions

IP66 rated

Dynamic thermal management protects electrical components when temperature limitations are exceeded

Optional UL924 Listed dimming bypass module for controls override in emergency situations

50°C ambient

INTEGRATION

Optional balanced architectural pendant mount with bird shroud

Speed mount for simple installation

Uplight standard providing 200-600 lumens with no additional wattage consumption

Integral battery backup to comply with path of egress requirement

Integral wireless and stand alone controls for maximum energy savings

QUALITY

Standard 20kA surge suppression provides an enhanced level of protection against power spikes and surges

One-piece silicone gasketing for optimal ingress protection

Stainless steel hardware standard

easy installation

The mounting plate is secured to a square or octagonal 4" surface or recessed j-box prior to making wiring connections and mounting the luminaire. The arrow on the mounting plate points in the direction of the drive lane.

1

Align mounting plate in the direction of drive lane and secure to mounting surface

One-person installation

The Speed Mount saves time and labor by freeing installers hands for making wiring connections. A hidden latch enables tool free mounting of the luminaire to the mounting plate for simple installation.

2

Hang luminaire to mounting plate to free hands for wiring

Tamper-proof screw

Hidden secure latch

3

Make wiring connections and feed wires into j-box

Hooks

4

Guide slots on top of luminaire into mounting plate hooks until the luminaire snaps into place



integrated control

Hubbell Control Solutions' NX Distributed Intelligence™ lighting control platform utilizes a Distributed Network Architecture (DNA) that connects intelligent devices including luminaires, controllers, panels, occupancy sensors, photocells, wall switches and dimmers, creating a system with an unmatched level of reliability, scalability and simplicity.

wiSCAPE® lighting control systems feature wireless nodes in outdoor luminaires combined with advanced, data-driven software to maximize energy savings and increase safety. The nodes integrate into a wide variety of luminaires used in parking lots and decks, parks and campuses as well as roadways for complete management and monitoring of smart cities.

NX DISTRIBUTED
INTELLIGENCE

wiSCAPE™



OURO™



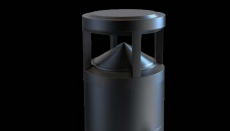
PGL8



ARCHITECTURAL FLOOD



WALL DIRECTOR®

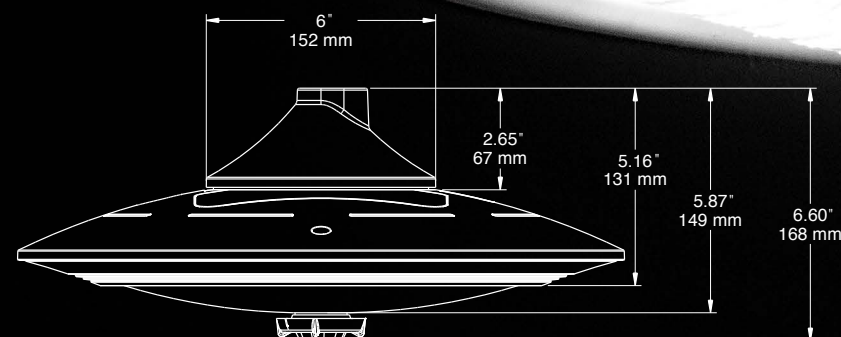
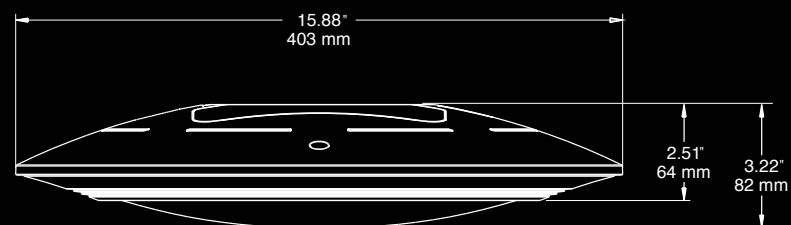


PAVILION™

Kim Lighting's coordinated collection of ceiling, area, wall, flood and low-level lighting luminaires provide a consistent aesthetic to enhance the entire site.



ordering information



OPTIONS

SF	Single Fuse 120, 277, 347 Line Voltage
DF	Double Fuse 208, 240, 480 Line Voltage
PB21	Balanced Pendant J-Box and Bird Shroud (64L)
PB22	Balanced Pendant J-Box and Bird Shroud (128L)
NU	No Uplight
EM	Integral Battery Backup Unit

S E R I E S		D I S T R I B U T I O N S		L I G H T E N G I N E		C C T		V O L T A G E		C O L O R		C O N T R O L O P T I O N S																					
PGL8	Parking Garage Luminaire	5C	Type V Concentrated	5C, 5Q & 5R Distributions Only		3K7	3000K, 70 CRI	UNV	Universal 120-277V	BLS	Black Gloss Smooth	NX STANDALONE		NX NETWORKED WIRELESS		wiSCAPE® WIRELESS																	
		5Q	Type V Square	128L-35	4500 lm	3K8	3000K, 80 CRI	347	347V	BLT	Black Matte Textured	NXOS-12F	NX Distributed Intelligence™, PIR Occupancy Sensor, Daylight Harvesting, Up To 12' Mounting Height	NXWE	NX Distributed Intelligence™ Wireless Enabled (Module + Radio)	WIR	Wireless Control, wiSCAPE®																
		5R	Type V Rectangular	128L-55	6000 lm	4K7	4000K, 70 CRI	480	480V	DBS	Dark Bronze Gloss Smooth	NXSP-30F	NX Distributed Intelligence™, PIR Occupancy Sensor, Daylight Harvesting, Up To 30' Mounting Height	NXOSW-12F	NX Distributed Intelligence™ Wireless, PIR Occupancy Sensor, Dimming Daylight Harvesting, Up to 12' Mounting Height	WIRSC	wiSCAPE® + Occupancy Sensor																
		ASY	Type IV Asymmetric	128L-65	7500 lm	4K8	4000K, 80 CRI	DBT	Dark Bronze Matte Textured	GTT	Graphite Matte Textured			NXOS924-12F	NXDistributed Intelligence™, PIR Occupancy Sensor with UL924 Dimming Bypass Module for Controls Override, Up to 12' Mounting Height ²	NXSPW-30F	NX Distributed Intelligence™ Wireless, PIR Occupancy Sensor, Dimming Daylight Harvesting, Up to 30' Mounting Height	WIR924	Wireless Control, wiSCAPE® with UL924 Dimming Bypass Module for Controls Override ²														
				128L-85	9500 lm	5K7	5000K, 70 CRI													LGS	Light Grey Gloss Smooth	LGT	Light Grey Matte Textured	NXWE924	NX Distributed Intelligence™ Wireless Enabled with UL924 Dimming Bypass Module for Controls Override ²	SCP-8F	Remote Control Programmable Line Voltage Sensor (8–12' Recommended Mounting Height)						
				128L-110	11500 lm							PSS	Platinum Silver Gloss Smooth															VGT	Verde Green Matte Textured	NXOSW924-12F	NX Distributed Intelligence™ Wireless, PIR Occupancy Sensor with UL924 Dimming Bypass Module for Controls Override Up to 12' Mounting Height ²	SCP20F	Remote Control Programmable Line Voltage Sensor (12–20' Recommended Mounting Height)
				128L-130	13500 lm																												
		ASY Distribution Only		WHT	White Matte Textured	CC¹	Custom Color	NXSPW924-30F	NX Distributed Intelligence™ Wireless, PIR Occupancy Sensor with UL924 Dimming Bypass Module for Controls Override Up to 30' Mounting Height ²	SCP924-20F	Programmable Sensor with UL924 Dimming Bypass Module for Controls Override (12–20' Recommended Mounting Height) ²																						
		64L-50	4500 lm									OCM	Microwave Occupancy Module (8-20' Recommended Mounting Height)																				
		64L-70	6500 lm																														
64L-90	7500 lm																																

Notes:

¹ Consult factory

² Universal voltage only



ALERA LIGHTING

ARCHITECTURAL AREA LIGHTING

BEACON PRODUCTS

COLUMBIA LIGHTING

COMPASS

DUAL-LITE

HUBBELL CONTROL SOLUTIONS

HUBBELL INDUSTRIAL LIGHTING

HUBBELL OUTDOOR LIGHTING

KIM LIGHTING

KURT VERSEN

LITECONTROL

PRESCOLITE

KIMLIGHTING

701 Millennium Blvd. Greenville, SC 29607

Tel 864.678.1000

Kim-1002 7/14/19

Copyright © 2019 Kim Lighting, a division of Hubbell Lighting, Inc. All rights reserved. Please refer to online specifications for most up-to-date content as specifications are subject to change without notice.