

Architektur

A4LED

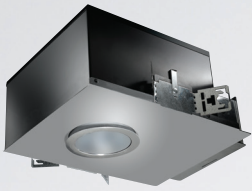
All the advantages of Prescolite's Award Winning A4, now combined with an integral Xicato light engine.

LIGHTSOURCE BY
XICATO



FEATURES

- VERTICAL AIMING WITH VISUAL AIMING MARKERS**
 Superior vertical aiming and visual aim position verification for all lamp types. 35° for A4 and A4LED.
- TOOL-LESS VERTICAL AIMING LOCK**
 Vertical aiming can be locked without the need for tools.
- TOOL-LESS HORIZONTAL AIMING LOCK**
 The horizontal aiming mechanism can be locked without the need for tools.
- HORIZONTAL ADJUSTMENT RING WITH 362° HORIZONTAL AIMING**
 Horizontal aiming beyond 360° up to 362°, the most flexible in the industry.
- TRANSLATING CENTER BEAM OPTICS**
 The most sophisticated aiming method in the industry for uncompromised beam control.
- TOOL-LESS TOP ACCESS**
 Allows for easy, tool-less relamping and service in applications where below-ceiling access is difficult, expensive, and/or impossible.
- 362° HORIZONTAL STOP**
- TRIM SAFETY CABLE**
 All housings are equipped with a cable that can be attached to any of the trims. This provides increased safety and simplifies relamping by allowing the trim to hang in place while replacing the lamp.
- TORSION SPRINGS**
 A4 and A4LED trims have the best trim retention in the industry for this type of product, which eliminates call backs or unsightly gaps between the trim flange and the ceiling.
- DISCREET APERTURE**
 A4 and A4LED features a true 4.0" aperture.
- BROAD TRIM VARIETY**
 A4 and A4LED are available in a broad offering of trims with numerous finish and color options.
- DIE CAST ALUMINUM AIMING BEZEL & LAMP PLATE**
- DIE CAST ALUMINUM LAMP HOLDER**
- HORIZONTAL ADJUSTMENT RETAINER RING (3)**
- HOT AIMING ACCESS POINT**



A4LED

Architektür

CATALOG NUMBER:

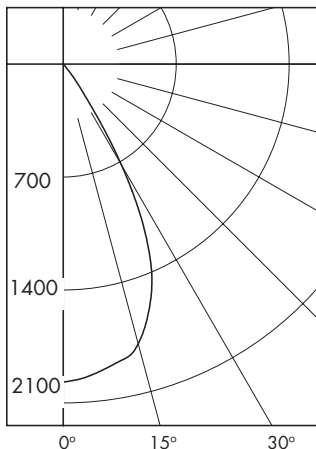
EXAMPLE: A4LED120-4A9LED15L27K8FL35 4C1

HOUSINGS	VOLTAGE	OPTIONS	—	LIGHT ENGINE	OUTPUT	LED COLOR	CRI	BEAM ANGLE
<input type="checkbox"/> A4LED	<input type="checkbox"/> 120 120V <input type="checkbox"/> 277 277V	<input type="checkbox"/> Blank Sylvania 0-10V 10% Dimming Driver. <input type="checkbox"/> DM1 Sylvania 0-10V 1% Dimming Driver <input type="checkbox"/> 2DM Lutron LTE Driver <input type="checkbox"/> HDM Lutron L3D Driver	<input type="checkbox"/> 4A9LED Upper Reflector Light Engine Assembly	<input type="checkbox"/> 9L 900 Delivered Lumens <input type="checkbox"/> 12L 1200 Delivered Lumens <input type="checkbox"/> 15L1 1500 Delivered Lumens	<input type="checkbox"/> 27K 2700 Kelvin <input type="checkbox"/> 30K 3000 Kelvin <input type="checkbox"/> 35K 3500 Kelvin <input type="checkbox"/> 40K 4000 Kelvin	<input type="checkbox"/> 8 Nominal 80+ CRI <input type="checkbox"/> 9 Nominal 95+ CRI	<input type="checkbox"/> FL35 Spun Aluminum Reflector	¹ Not available in 95 CRI ² Alzak finishes available on 4C1 & 4C1ST ³ Painted finishes on 4B1, 4S1, and 4P1 trims ⁴ Not available with ST self flange option ⁵ Specular clear Alzak upper reflector standard. Do not specify reflector finish or color

TRIM	FLANGE OPTIONS	LOWER REFLECTOR FINISH	LOWER REFLECTOR FINISH COLOR	FLANGE FINISH COLOR	ACCESSORIES
<input type="checkbox"/> 4C1² Alzak Reflector Cone	<input type="checkbox"/> Blank Diecast Aluminum Flange <input type="checkbox"/> ST Self Flanged (4C1 and 4B1 only)	<input type="checkbox"/> Blank² Specular Alzak <input type="checkbox"/> SS² Semi Specular Alzak <input type="checkbox"/> MFC² American Matte Alzak	<input type="checkbox"/> Blank² Clear Alzak <input type="checkbox"/> CG² Champagne Gold Alzak <input type="checkbox"/> BL ² Black Alzak ³ Black Paint <input type="checkbox"/> WE² Wheat Alzak <input type="checkbox"/> LW² Light Wheat Alzak <input type="checkbox"/> PW² Pewter Alzak <input type="checkbox"/> WH³ White Paint <input type="checkbox"/> Z³ Zet Silver Paint	<input type="checkbox"/> Blank Anodized finish (ST option 4C1 only) <input type="checkbox"/> WT White Trim Flange <input type="checkbox"/> BAT⁴ Brushed Aluminum Trim Flange <input type="checkbox"/> BT Black Trim Flange <input type="checkbox"/> ZT Zet Silver Trim Flange	<input type="checkbox"/> B24 Set of two (2) 24" Bar Hangers for T-bar Ceilings <input type="checkbox"/> B6 Set of two (2) 24" Bar Hangers for ceiling joists up to 24" centers

A4LED120-4A9LED15L30K8FL354C1

LED Light Engine: 3000K, 80 CRI
System Wattage: 35.8
Fixture Delivered Lumens: 1404
Spacing Criteria: 0.8



CANDELA DISTRIBUTION

DEG	CANDELA	LUMENS
0	1971	
5	1937	183
15	1795	497
25	1243	548
35	208	168
45	3	6
55	1	1
65	1	1
75	1	1
85	0	0
90	0	0

ZONAL LUMEN SUMMARY

ZONE	LUMENS
0-30	1228
0-40	1395
0-60	1402
0-90	1404
0-180	1404

LUMINANCE DATA IN CANDELA/ SQ. METER

Angle in Vertical	Average - 0°
45°	523
55°	215
65°	292
75°	476
85°	0

COEFFICIENTS OF UTILIZATION Zonal Cavity Method

Room Cavity Ratio	% Effective Ceiling Cavity Reflectance																
	80%		70%		50%		30%		10%								
	70	50	30	10	70	50	30	10	50	30	10						
1	114	112	109	107	112	109	107	106	105	104	102	102	100	99	98	97	96
2	109	105	101	98	107	103	100	97	100	97	95	97	95	93	94	93	91
3	104	99	94	91	103	97	93	90	95	91	89	92	90	87	90	88	86
4	100	93	88	85	98	92	88	84	90	86	83	88	85	82	86	84	81
5	96	88	83	79	94	87	82	79	86	81	78	84	80	77	82	79	77
6	92	84	78	74	90	83	78	74	81	77	74	80	76	73	79	75	73
7	88	79	74	70	86	79	74	70	77	73	70	76	72	69	75	72	69
8	84	75	70	66	83	75	70	66	74	69	66	73	69	66	72	68	65
9	80	72	66	63	79	71	66	63	70	66	63	70	65	62	69	65	62
10	77	68	63	60	76	68	63	60	67	63	59	67	62	59	66	62	59

A4LED120-4A9LED15L30K8FL354C1

Test No. 9395

Test No. 9395

Tested at 25°C Ambient in accordance to IESNA LM-79-2008