



LED Technology

Featured in:

Knife Pendant

Rail Pendant

LHE

LHF

Mod

More to come

VI

Variable Intensity Technology

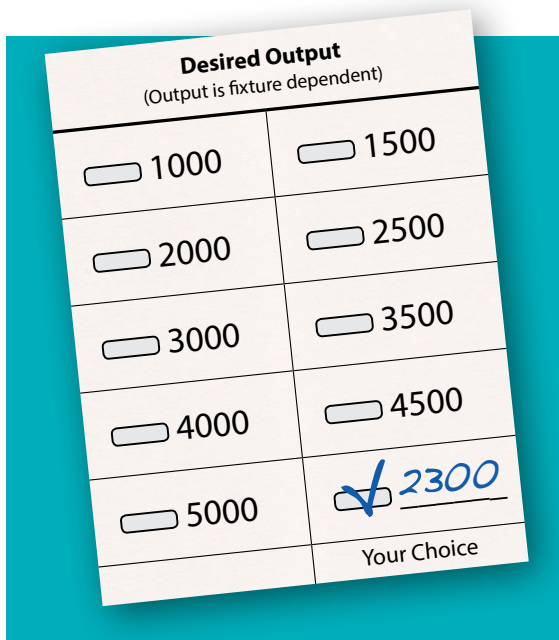
LITECONTROL
making light work™

Vi What It Is

Litecontrol's Variable Intensity (Vi) technology module allows specification of LED light output to meet precise application needs.

Why Use It?

LED fixtures incorporating Vi technology can be programmed to your exact specifications.



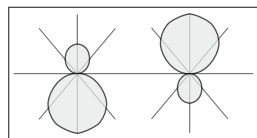
Specify light output required to achieve desired illuminance

Driven by application need, not limited fixture options



Specify fixture wattage to meet power density requirements

Fixture labeled to your specification means no lost watts in your energy calculation







Specify a particular indirect/direct distribution for desired visual comfort*

Uplight and downlight are independently programmed for maximum fixture efficacy

*for I/D fixtures only

How It Works

Specifier		Litecontrol	
Step 1		Step 2	
Determine Output	Work-plane, foot-candles, ceiling brightness, watts per square foot	Specify Fixture	Based on published output range
Step 3		Step 4	
Program Fixture	To match specification	Label Fixture	To precisely match specification