

CHANCE[®]

Gins and Booms



Catalog 1200 March 2020

Gins and Booms - 1200

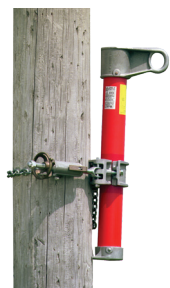


CHAIN BINDER TYPE TRANSFORMER GINS

Available in a standard-base and extended-base design, these proven Chain Binder Type Transformers Gins are versatile tools for hoisting distribution transformers and apparatus up a structure.

Features & Applications

- Standard base unit is for mounting on clear pole sections
- 5" extended-base model allows bridge mounting up to 4" x 5" crossarms
- Wheel tightener and 36" chain are part of each unit
- Standard and extended-base models feature 2000-lb. maximum ratings, including hand pull force
- 900-lb. lift load with single hoist line through a pulley on the gin and a sheave near the base of structure (lift load plus pull load equals capacity)
- Lift load can be 1,400 lbs., using 4-4 blocks
- Pole length is 26 inches



C4000090
Standard Base



C4000315
5" Base

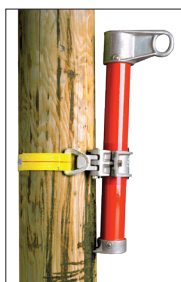


C4000440
Swivel Top
5" Base

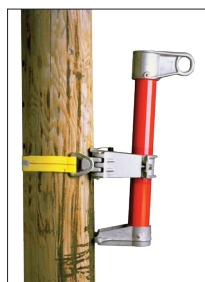
STRAP-TYPE TRANSFORMER GINS

Features & Applications

- Same as Chain-Type Gins, except with a strap-type-ratchet-action mounting mechanism rather than a chain binder
- With 10,000-lb. rated tensile strength, the 2"-wide polyester strap comes in 44" length to fit most structures
- Wide handle opening on rapid-action ratchet permits easy operation, even with gloves
- Both models feature 2000-lb. maximum ratings, including load and fall-line pull



T4001937



T4001938



Safety Considerations

- A swivel-hook block should always be used in the eye of the gin and a sheave or capstan near the bottom of the structure should be used to thread handline
- Gins are not intended for applications involving side pull on the hoist line or with the lift load in a tagged-out position
- Load line should be parallel to the gin pole
- When calculating load capacities, allow 10 percent for friction in rope pulleys
- For example, using two double-sheave blocks, maximum lift load would be 1,400 lbs.; or, using a single sheave, maximum lift load would be 900 lbs.

CHAIN-BINDER GINS

Catalog No.	Description	Weight
C4000090	Standard Base Chain Gin	15 lb./6.75 kg.
C4000315	5" Extended Base Chain Gin	30 lb./9 kg.

Swivel-Top Chain Gin

- Same application as Transformer Gin, but top eye casting can be swiveled to bypass secondary lines, when necessary
- Cap is not intended to swivel while under load
- Gin has identical load ratings to gins above
- Features 48" Epoxiglas[®] mast and with two wheel tighteners and 36" chain units

Catalog No.	Description	Weight
C4000440	Swivel Top 5" Extended Base Chain Gin	37 lb./16.7 kg.

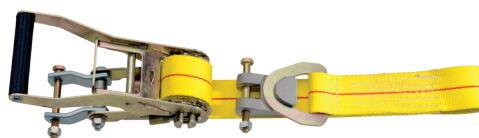
Safety Considerations

- A swivel-hook block should always be used in the eye of the gin and a sheave or capstan near the bottom of the structure should be used to thread handline
- Gins are not intended for applications involving side pull on the hoist line or with the lift load in a tagged-out position
- Load line should be parallel to the gin pole
- When calculating load capacities, allow 10 percent for friction in rope pulleys
- For example, using two double-sheave blocks, maximum lift load would be 1,400 lbs.; or, using a single sheave, maximum lift load would be 900 lbs.

STRAP-TYPE GINS

Epoxiglas[®] pole: 3" diameter, 26" length

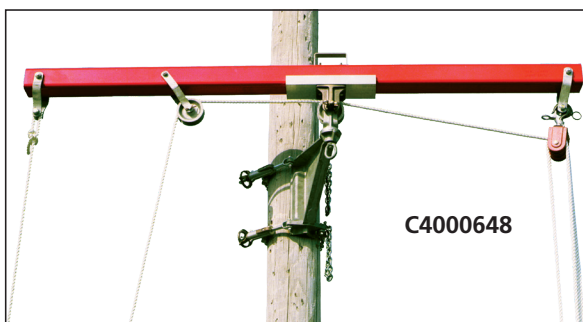
Catalog No.	Description	Weight
T4001937	Standard-Base Strap Gin	14 ¹ / ₄ lb./6.4 kg.
T4001938	5" Extended-Base Strap Gin	18 ¹ / ₄ lb./8.2 kg.



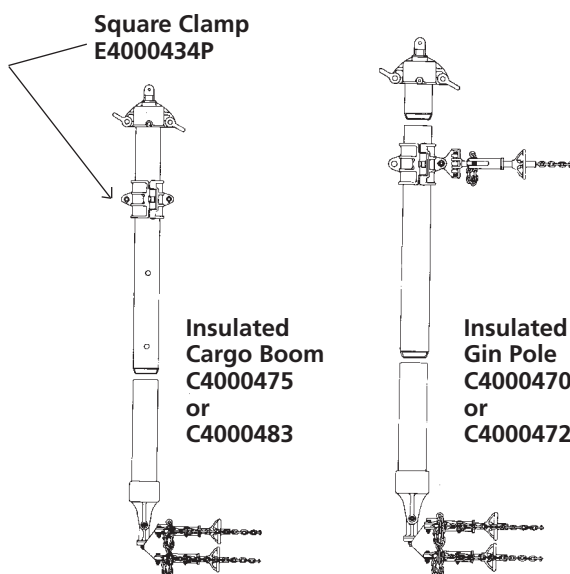
Strap Binder Kit

Catalog No.	Description	Weight
T4002007	D-Buckle Strap Binder only	4 ¹ / ₂ lb./2 kg.

CROSSARM GIN



The gin beam can be rotated in a half circle, swinging the load away from underbuild obstructions. Rocker-action of the beam, up to 60°, controls distance of the load from the pole.



Features & Applications

- Yoke casting fits over distribution crossarms, allowing gin to be used with rope blocks
- Can also be used with rope blocks or handline to lift conductors from their insulators
- Removable cadmium-plated steel pin provides adjustment for crossarm from 3-1/2" x 4-1/2" up to 4-3/4" x 5-3/4"
- Convertible model fits up to 6" x 6" crossarm

Safety Considerations

- At 30° maximum angle from vertical, 44" gin has rated working load including pull force of 750 lbs.
- 500 lb. 56" gins are not intended for side-pull applications on hoist line or load line
- Lines to be within 5° of vertical

Catalog No.	Description	Weight
H20	44" Crossarm Gin	10 lb./4.5 kg.
T4000870	56" Crossarm Gin	12 lb./5.5 kg.
T4001708	Convertible 44" Crossarm Gin	10 lb./4.5 kg.

MULTI-DUTY GIN

- Gin clamps at top of pole to lift heavy equipment
- Gin can be mounted lower on pole without changing mounting bracket to avoid obstructions
- Sturdy 4" x 4" Epoxiglas® beam gives unit a 2000 lb. load rating
- With beam removed, mounting bracket can be used by itself for hanging transformers
- Maximum rating of gin bracket is 2500 lbs.

Catalog No.	Description	Weight
C4000648	Multi-Duty Gin, Complete	70 lb./31.5 kg.
C85W	Mounting Bracket with Wheel Tightener	17 lb./7.7 kg.

INSULATED GIN POLE/CARGO BOOM

Insulated Gin Pole is equipped with three chain tighteners which can be mounted to the pole to give lifting capacities of 5,000 pounds.

- Top casting is fitted with two clevises for convenience in loading.
- Placing a pole clamp in the swivel lug allows use of wire tong for stabilizing the gin.

Insulated Cargo Boom is rated at 1,000-pound capacity.

- Center casting can be adjusted to three possible positions for guy loading the tool.
- Base mounting is hinged to permit pivoting of the tool from horizontal upward 90° to vertical and will also swivel a full 180°, depending upon the proximity to the structure.
- Casting at the top is the same as on the Insulated Gin Pole.

Cat. No.	Description	Weight
C4000470	8' Gin Pole/Chain Binders	74 lb./33.3 kg.
C4000472	12' Gin Pole/Chain Binders	90 lb./40.5 kg.
C4000475	16' Cargo Boom/Chain Binders	100 lb./45 kg.
C4000483	16' Cargo Boom/Tower Binders	96 lb./43.2 kg.

SWIVEL BOOM — HEAVY DUTY Features & Applications

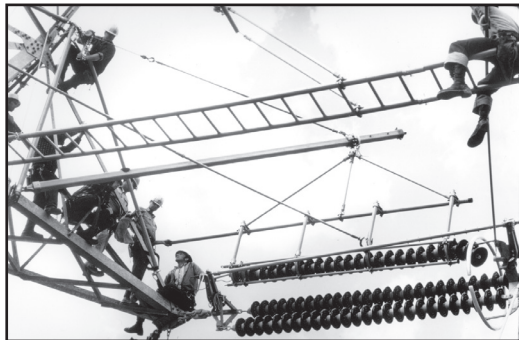
- Used on EHV to swing an insulator cradle with insulators into a structure for repair
- 1,000-lb. capacity with 4" x 4" Epoxiglas® horizontal boom, coupled with 3" round Epoxiglas mast
- Unit rigging requires a link stick and hoisting device in diagonal position
- Clamp on square boom can be adjusted to three possible positions for loading purposes
- Casting on end of boom is fitted with two clevises for convenient loading
- Available with swivel boom on pole-mounted configuration
- Also available with four tower-mounting brackets to fit towers up to 6" to 6" angle legs



Tower Mounting Bracket
C4000602

C4000469

Catalog No.	Description	Weight
C4000464	16' Boom, 8' Mast, Clamps For Tower Mounting	128 lb./57.6 kg.
C4000465	18' Boom, 10' Mast, Clamps For Tower Mounting	140 lb./63 kg.
C4000469	18' Boom, 10' Mast, Chain Binders for Pole Mounting	140 lb./63 kg.



SWIVEL BOOM — MEDIUM DUTY Features & Applications

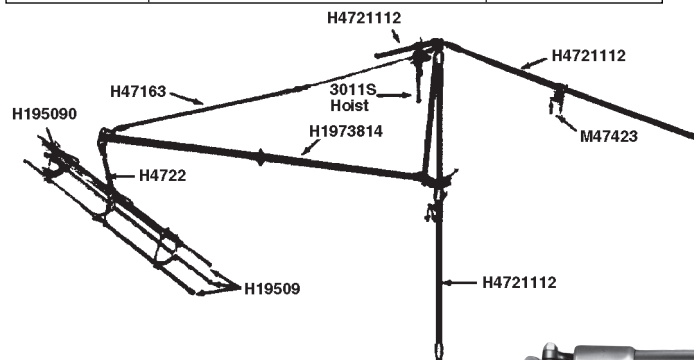
- Used on transmission structures to lift and move an insulator cradle with insulators into a convenient work position on a structure
- 3"-round Epoxiglas® horizontal boom and vertical mast are designed for 500-lb. ratings when used in a steel-tower configuration
- 600-lb. rating for wood-pole assembly
- Insulated link stick and hoist are used in diagonal position to lift cradle full of insulators clear of deadend

For tower use, three boom support poles should be added in a tripod configuration as shown in the illustration at left below.

Catalog No.	Description	Weight
H1973814	14' Boom, 8' Mast, Clamps For Tower Mounting	70 lb./31.5 kg.
H1973H10	10' Boom, 6' Mast, Chain Binders for Pole Mounting	61 lb./27.5 kg.



H1973H10



BOOM SUPPORT POLE Features & Applications

- 2-1/2" diameter Epoxiglas® poles are used to brace either heavy-duty or medium-duty Swivel Booms in tripod arrangement
- Poles are anchored to steel tower with tower-type saddles (M4742 and M47413)



H4721112

- Same tool is also used as horizontal member for trolley pole changeouts of suspension insulators

Catalog No.	Pole Diameter & Length	Overall Length	Weight
H4721112	2 1/2" x 12'	12'9"	18.5 lb./8.3 kg.





HUBBELL®
Power Systems, Inc.

• 210 N. Allen St. • Centralia, MO 65240 • (573) 682-5521

NOTICE: For the latest revision of our Catalog and Literature, click here or visit our web site: www.hubbellpowersystems.com

NOTE: Hubbell has a policy of continuous product improvement. We reserve the right to change design and specifications without notice. ©Copyright 2020 Hubbell Incorporated

NEVER COMPROMISE™

www.hubbellpowersystems.com

