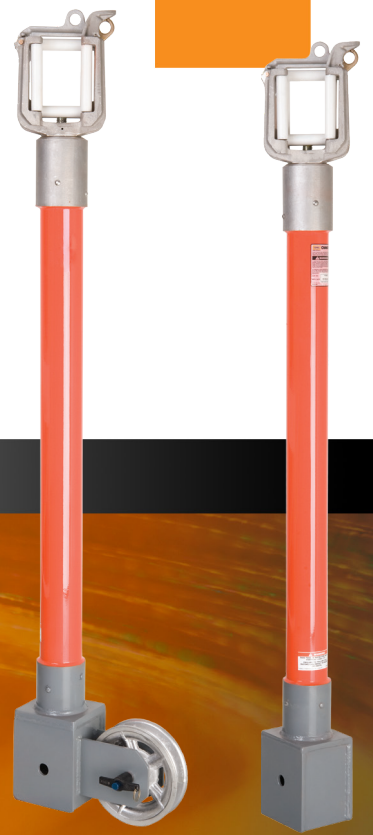


CHANCE[®]

Truck Accessories

Catalog 4150 March 2020



Truck Accessories - 4150



Three-Phase Boom Lifts

- Jib-mounted
- Winch-driven
- Constant-load monitor
- 1,200-lb. rating

Features & Applications

- Hot-line tool set enables a material-handler boom truck to lift single- or three-phase system conductors
- Operator remains in bucket, positioned to perform such routine jobs as replacing insulators, crossarms or poles
- Each complete unit includes:
 - o 10' Vertical orange Epoxiglas® mast (4" x 4")
 - o 10' Horizontal gray Epoxirod® support arm (2-1/2" dia.) with four Heavy-Duty Roller-type Wireholders for conventional crossarm construction
 - o 6' Horizontal gray Epoxirod support arm (2-1/2" dia.) with one additional Wireholder for center mast for armless construction
 - o Storage bags for all components above
- Wireholders latch easily from bucket with hookstick
- 12" Epoxirod link insulates each latch-release lanyard
- For crossarm construction: 10' arm attaches at mast top
- Fourth wireholder furnished for crossarm-mounted neutral, not shown
- For armless construction: 6' arm attaches at proper level on series of mounting holes on mast

Mechanical Ratings:

Max. Total Load:

- Balanced Vertical Load: 1200 lb.

Rated working load (per wire holder):

- Vertical: 300 lb.
- Side Load: 100 lb.

Electrical Ratings:

GLOSSY, CLEAN AND DRY Epoxiglas®
 15kV Phase to Phase (20 Inch Min. Wireholder Spacing)
 34kV Phase to Phase (20 Inch Min. Wireholder Spacing)
 and
 M4805-7 Insulators are used on each wireholder)

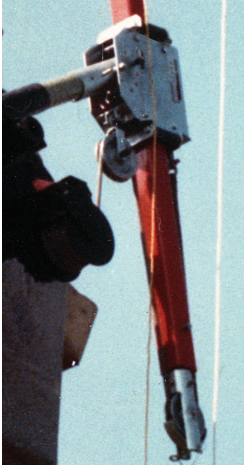


Wireholders latch easily from bucket with hookstick. 12" Epoxirod link insulates each latch-release lanyard.

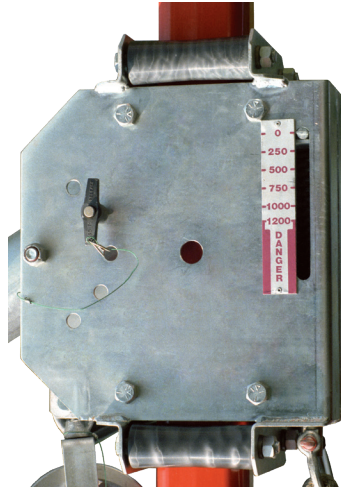


For armless construction, shorter crossarm mounts midway with single wireholder at top of mast. Notice, too, that center wireholder may be used alone for single-phase lifts.





Winch line connects to mast base to raise conductors and provide working clearances for operator.



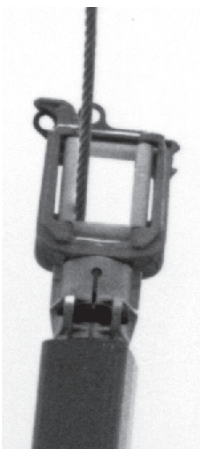
A scale on each side of monitor displays constant readout of load uplift for easy visibility from both buckets.



Boom adapter can pin at various angles. Built-in scale continuously monitors load uplift. Nylon rollers ensure smooth mast travel. Jib Sleeve, available separately and in custom sizes.



Sleeve for square jib fits other brands of material handler vehicles. Notice, too, that center wireholder may be used alone for single-phase lifts.



Center wireholder, used alone, permits single-phase lifts.



See the next page for Ordering Information.

Three-Phase Boom Lifts

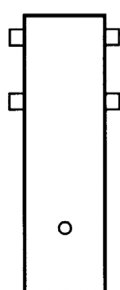
Complete Units

Features & Applications

- Each complete unit includes a jib sleeve in size listed in addition to:
 - 10' Vertical orange Epoxiglas® mast (4" x 4")
 - 10' Horizontal gray Epoxirod® support arm (2-1/2" dia.) with four Heavy-Duty Roller-type Wireholders for conventional crossarm construction
 - 6' Horizontal gray Epoxirod support arm (2-1/2" dia.) with one additional Wireholder for center mast for armless construction
 - Weight of each complete set: 225 lb. / 102 kg

Catalog No.	Truck Application	Sleeve Adapter
C4002719	No Jib Sleeves included. See below for correct size.	Jib sleeve separate
PST4004201	Altec: 4" x 4" square jib	PST4003111
C4001664	Altec: 4"- diameter round jib	E4001678
C4001709	Teco or Holan: 4" x 4" square jib	E4001689
PST4004433	Terex/Hi-Ranger: 4" x 4" square jib with 1" - diameter pin	PST4003111002

Jib Sleeves ONLY

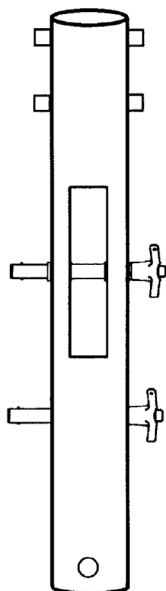


Altec®
PST4003111

Teco/Holan
E4001689

Terex/Hi-Ranger
PST4003111002

Posi-Plus
PST4004220



Altec®
E4001678

Jib Adapters – Material Handlers

Catalog No.	Jib Application	Weight
PST4003111	Altec: 4" x 4" square fits AM55	20 lb./9.09 kg
E4001678	Altec: 4"- diameter round	20 lb./9.09 kg.
E4001689	Teco or Holan: 4" x 4" square	20 lb./9.09 kg.
PST4003111002	Terex/Hi-Ranger: 4" x 4" square jib with 1" diameter pin	20 lb./9.09 kg.
PST4004220	Posi-Plus: 3-3/4" x 4-3/4"	20 lb./9.09 kg.

For other sizes, consult factory.



Altec® E4001678

C4001664: Altec®: 4"- diameter round jib with E4001678 Sleeve Adapter



Mechanical Ratings:

Max. Total Load:

- Balanced Vertical Load: 1200 lb.

Rated working load (per wire holder):

- Vertical: 300 lb.
- Side Load: 100 lb.

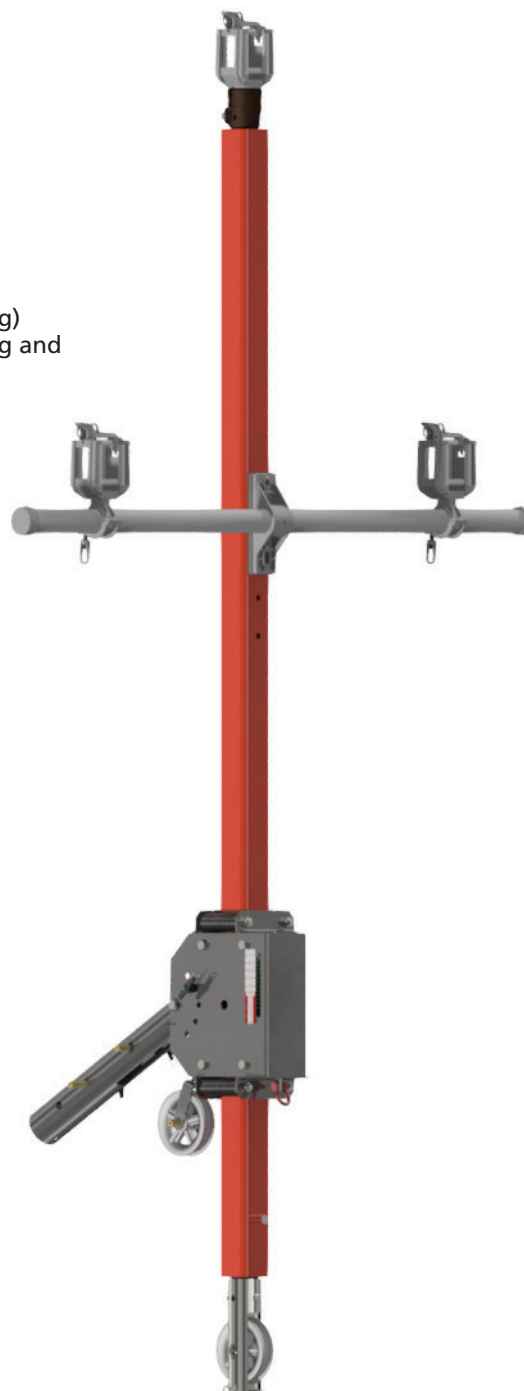
Electrical Ratings:

GLOSSY, CLEAN AND DRY Epoxiglas®

15kV Phase to Phase (20 Inch Min. Wireholder Spacing)

34kV Phase to Phase (20 Inch Min. Wireholder Spacing and

M4805-7 Insulators are used on each wireholder)



Boom Mounted Auxiliary Arm - Square Mast

Features & Applications

- 4" x 4" mast is fitted with quick mounting assembly
- Assembly attaches to booms from 5-7/8" x 7-3/8" to 12" x 12", both square and rectangular
- Working end of mast will accept several accessories such as:
 - Epoxiglas® Auxiliary Arm
 - Single lifting wire holder
 - Sheave for gin work
- Auxiliary Arm may be swiveled to and locked into any desired position
- Single lifting wire holder may also be swiveled to maintain conductor alignment
- Gin sheave will not swivel and is pinned stationary to keep the plane of the sheave in the vertical position at all times
- For use above 15kV, add M48057 insulator to each wireholder; see Page 4158

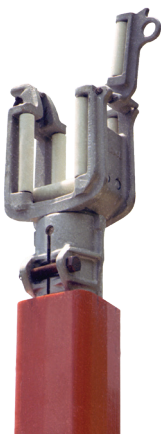
Mechanical Ratings:

Max. Total Load:

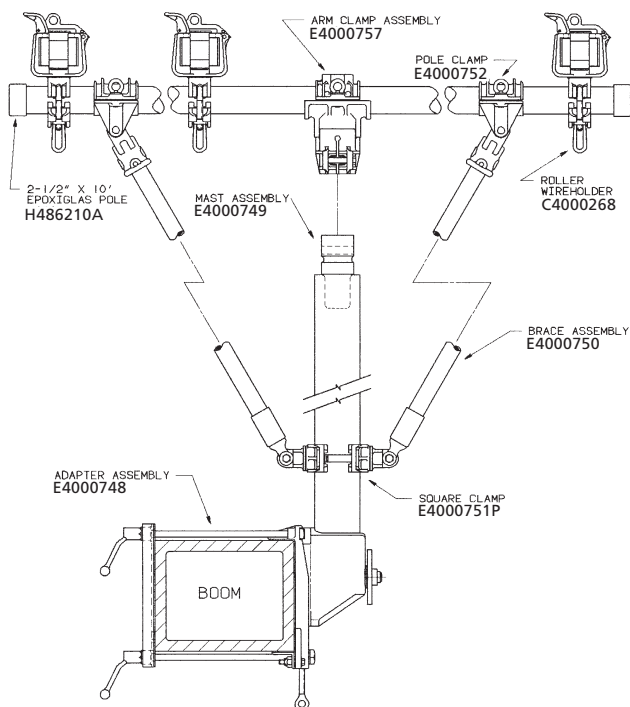
- Balanced Vertical Load: 1000 lb.
- Unbalanced Vertical Load: 800 lb.

Rated working load (per wire holder):

- Vertical with braces: 200 lb.
- Vertical without braces: 150 lb.
- Side Load: 100 lb.



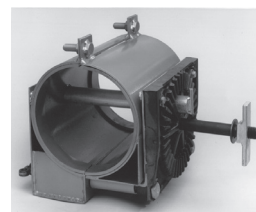
C4000747
Wireholder



Catalog No.	Description	Weight
C4000744	Mast Assy., 10' Arm & Braces for Booms 5 7/8" x 7 3/8" to 12" x 12"	130 lb./ 58.5 kg.
C4000745	Mast Assembly without Arm	90 lb./ 41 kg.
C4000746	Rope Sheave Assembly	8 lb./ 3.6 kg.
C4000747	Single Wire Holder	13 lb./ 5.9 kg.
C4001469	9"-dia. Boom Adapter (Altec)	40 lb./ 18 kg.
C4001877	8"-dia. Boom Adapter (Altec)	40 lb./ 18 kg.

Electrical Ratings:

- GLOSSY, CLEAN AND DRY Epoxiglas®
- 15kV Phase to Phase (20 Inch Min. Wireholder Spacing)
- 34kV Phase to Phase (20 Inch Min. Wireholder Spacing and M4805-7 Insulators are used on each wireholder)



OPTIONAL ADAPTER
for Round Booms, see pages 4164 & 4165



The single lifting wire holder may be rotated for alignment with the conductor.



C4000746 Sheave
The sheave will take a 3/4-inch diameter rope.



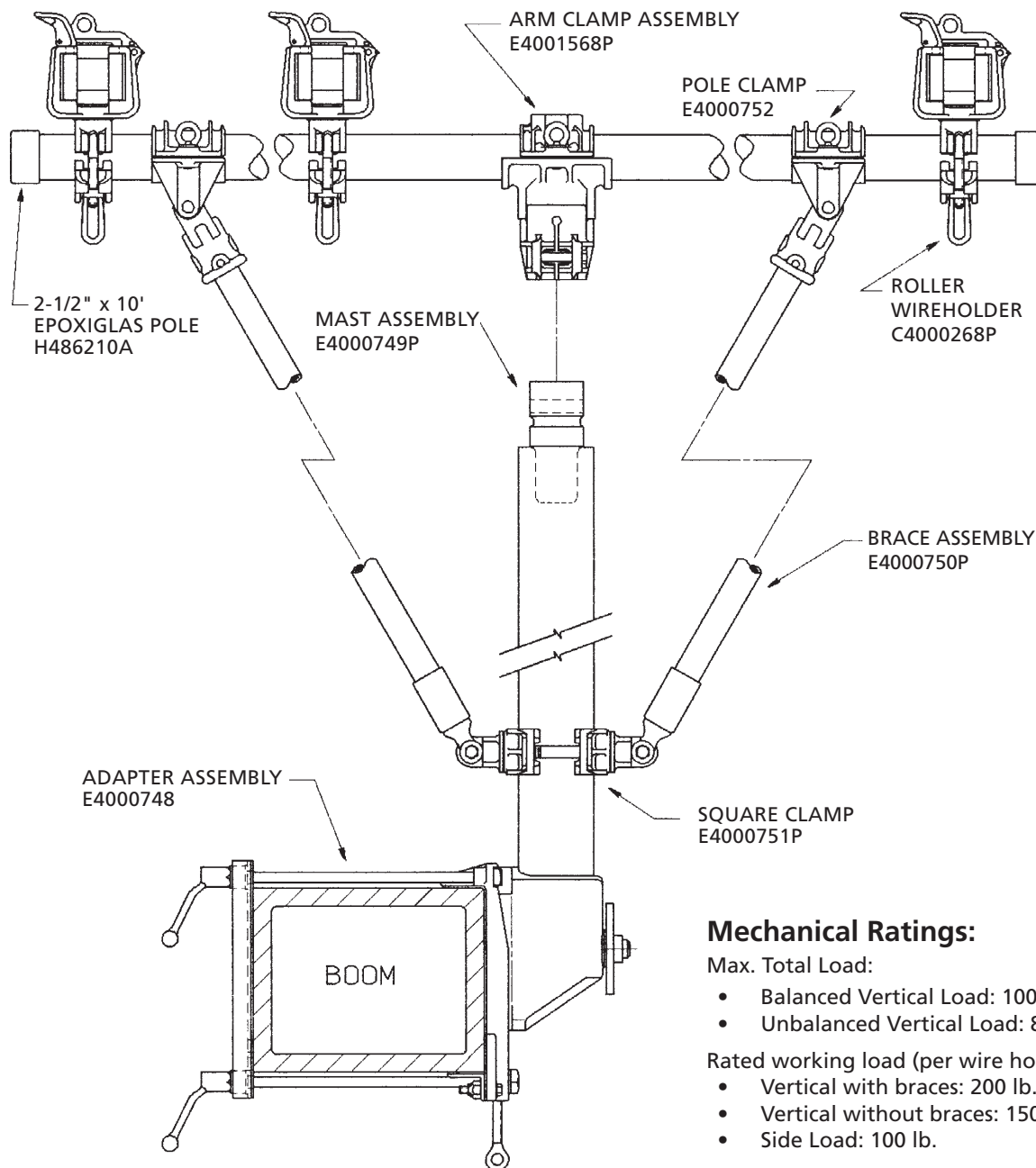
For three phase applications. The auxiliary arm may be rotated to align the wire holders with the conductors, then locked in position.



Easy mounting with our two intermeshing castings with single pivot stud.



C4000744: Three-Phase Boom Assembly (for Square Booms 5" x 7" to 12" x 12") with Orange Epoxiglas® Crossarm



Mechanical Ratings:

Max. Total Load:

- Balanced Vertical Load: 1000 lb.
- Unbalanced Vertical Load: 800 lb.

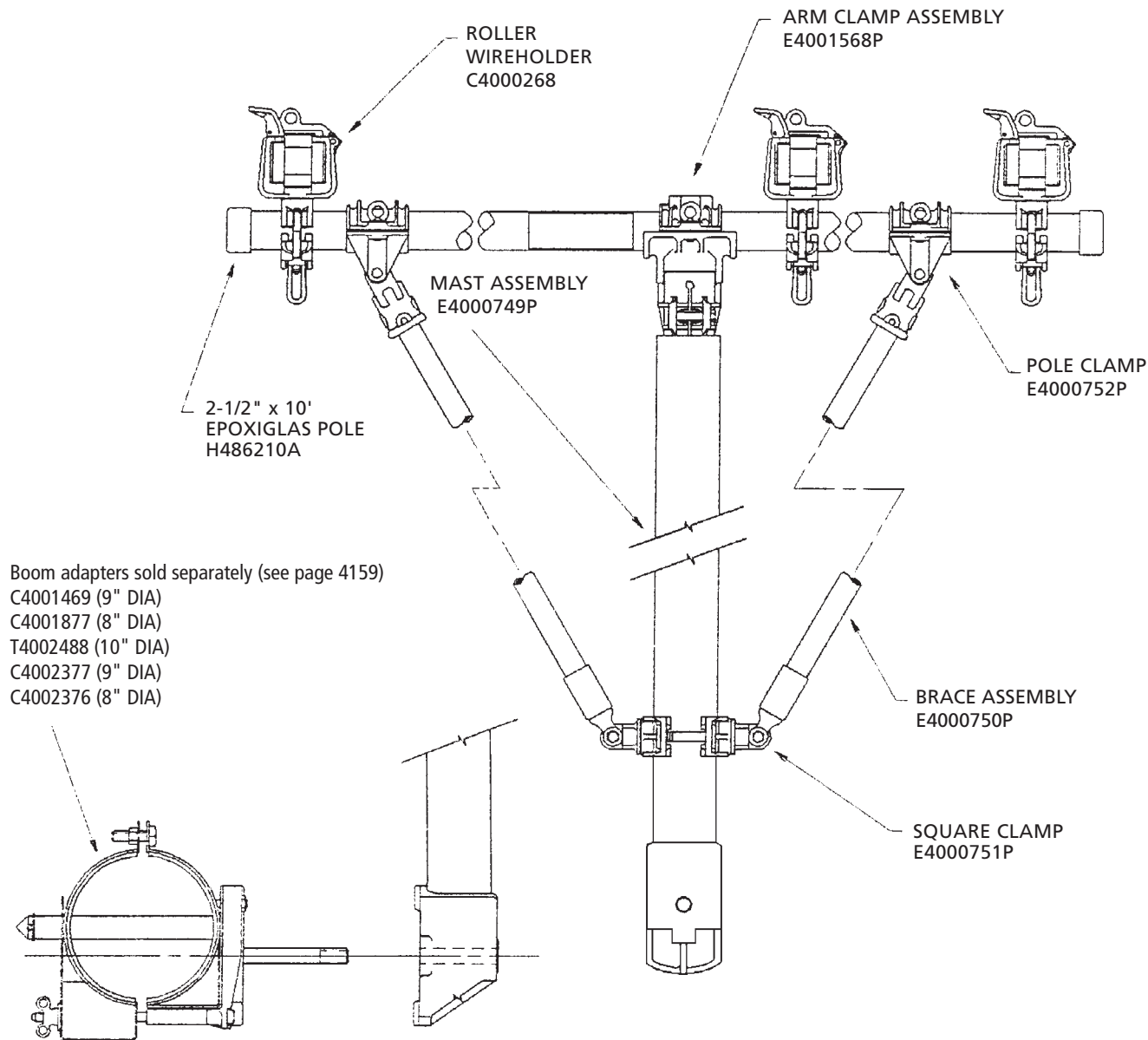
Rated working load (per wire holder):

- Vertical with braces: 200 lb.
- Vertical without braces: 150 lb.
- Side Load: 100 lb.

Electrical Ratings:

GLOSSY, CLEAN AND DRY Epoxiglas®
15kV Phase to Phase (20 Inch Min. Wireholder Spacing)
34kV Phase to Phase (20 Inch Min. Wireholder Spacing and M4805-7 Insulators are used on each wireholder)

T4001753: Three-Phase Boom Assemblies for Altec® trucks without Boom Adapter with Orange Epoxiglas® Crossarm



Electrical Ratings:

- GLOSSY, CLEAN AND DRY Epoxiglas®
- 15kV Phase to Phase (20 Inch Min. Wireholder Spacing)
- 34kV Phase to Phase (20 Inch Min. Wireholder Spacing and M4805-7 Insulators are used on each wireholder)

Mechanical Ratings:

Max. Total Load:

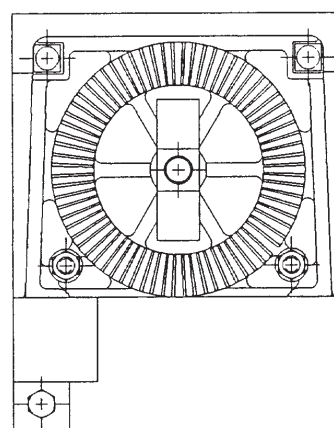
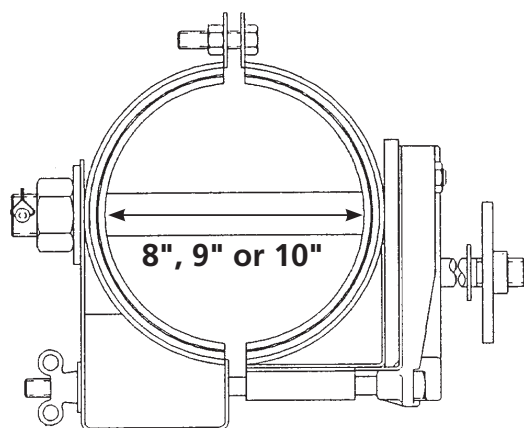
- Balanced Vertical Load: 1000 lb.
- Unbalanced Vertical Load: 800 lb.

Rated working load (per wire holder):

- Vertical with braces: 200 lb.
- Vertical without braces: 150 lb.
- Side Load: 100 lb.

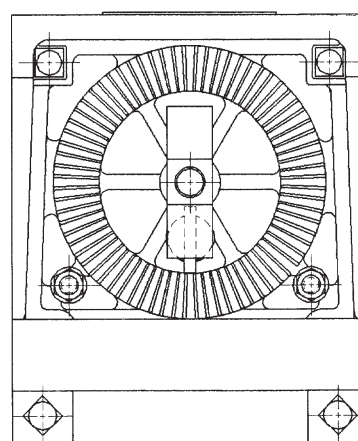
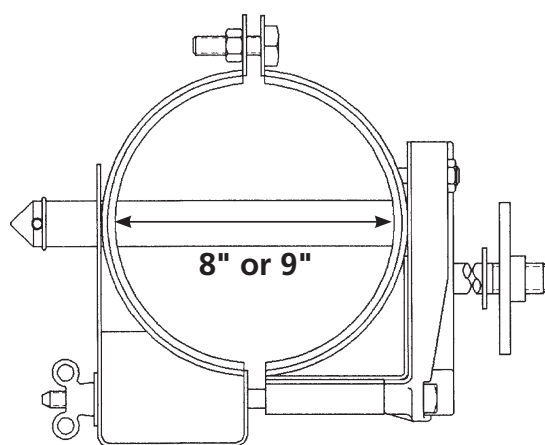
Boom Adapters for Altec[®] trucks **with 8" slide pad on reinforcement collar** **(for 4" x 4" mast in T4001753 Three-Phase Boom Assembly)**

T4002486 for 10"-diameter booms
C4002377 for 9"-diameter booms
C4002376 for 8"-diameter booms



Boom Adapters for Altec[®] trucks **(for 4" x 4" mast in T4001753 Three-Phase Boom Assembly)**

C4001469 for 9"-diameter booms
C4001877 for 8"-diameter booms

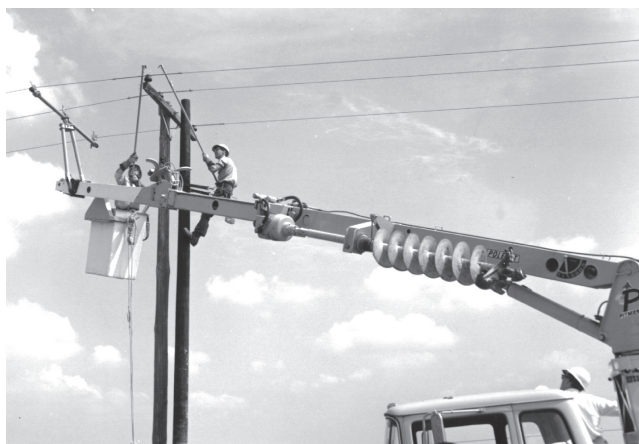


Boom Auxiliary Arm

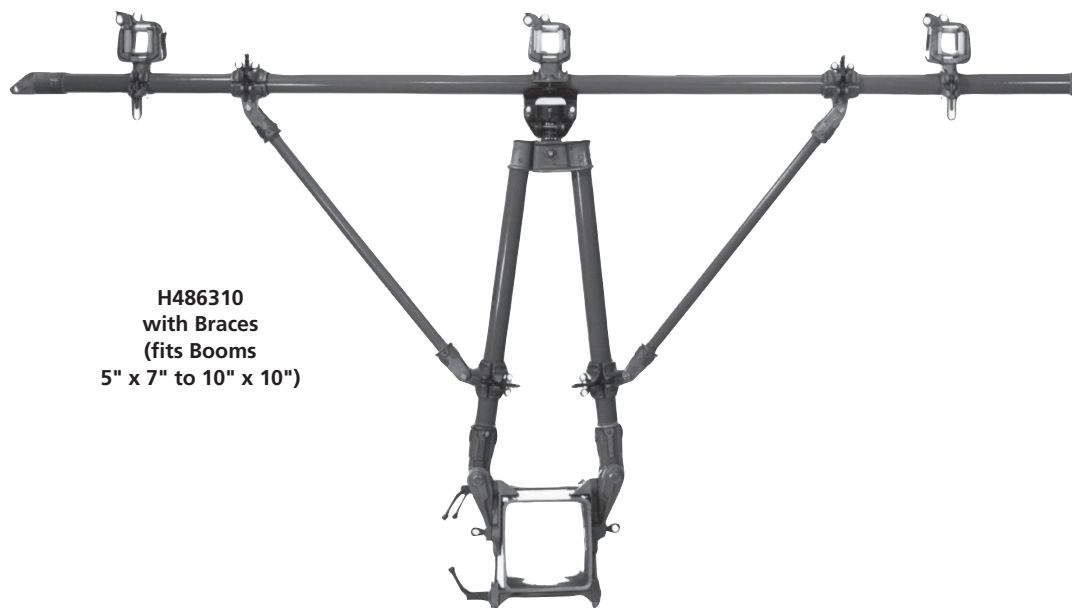
Features & Applications

- Consists of a boom mast and arm of Epoxiglas® construction
- For mounting on insulated boom
- For use on light construction when handling multiple conductors
- Two-legged mast can be mounted on square or rectangular shaped booms designed to handle 2,000 lbs. or more

Catalog Number	Description	Weight
H486310	Complete 10' Assembly with braces	120 lb. / 54.0 kg.
H48633	Bipod-Arm clamp only	12½ lb. / 5.6 kg.
H48634	Arm Brace Assembly only	8¾ lb. / 3.9 kg.
H4863	4' Bipod Mast only with boom clamps	64 lb. / 28.8 kg.
C4000351	2½" x 10' Horizontal Arm	13 lb. / 10.35 kg.



OPTIONAL ADAPTERS for Round Booms
(as on Altec® trucks), see
Catalog Page 4161



H486310
with Braces
(fits Booms
5" x 7" to 10" x 10")

Electrical Ratings:

- GLOSSY, CLEAN AND DRY Epoxiglas®
- 15kV Phase to Phase (20 Inch Min. Wireholder Spacing)
- 34kV Phase to Phase (20 Inch Min. Wireholder Spacing and M4805-7 Insulators are used on each wireholder)

Mechanical Ratings:

Max. Total Load:

- Balanced Vertical Load: 1000 lb.
- Unbalanced Vertical Load: 800 lb.

Rated working load (per wire holder):

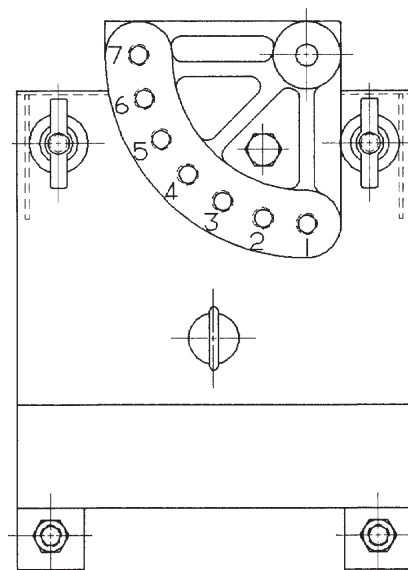
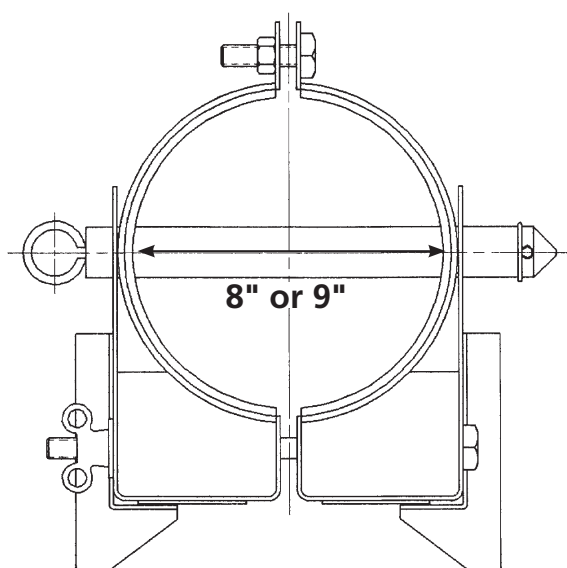
- Vertical with braces: 200 lb.
- Vertical without braces: 150 lb.
- Side Load: 100 lb.



Boom Adapters for Altec® trucks (for use with Bi-Pod assembly in H486310 Three-Phase Arm)

C4001467 for 9"-diameter booms

C4001878 for 8"-diameter booms

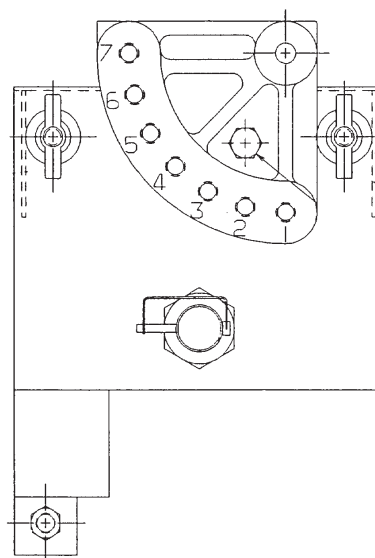
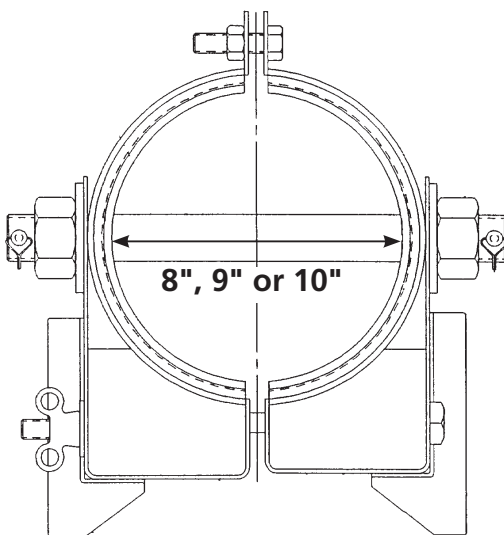


Boom Adapters for Altec® trucks with 8" slide pad on reinforcement collar (for use with Bi-Pod assembly in H486310 Three-Phase Arm)

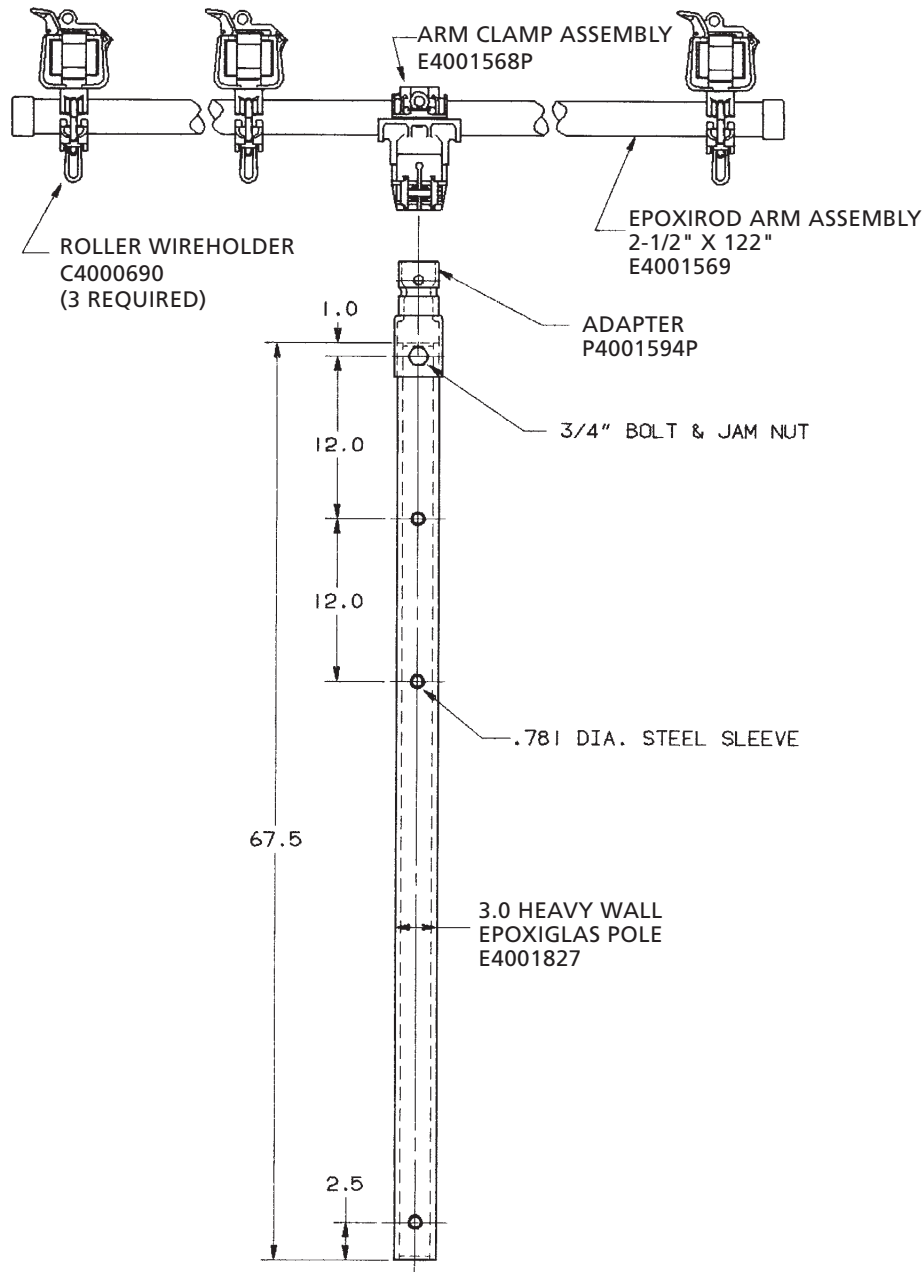
T4002486BI for 10"-diameter booms

C4002393 for 9"-diameter booms

C4002392 for 8"-diameter booms



T4001824: Auxiliary Arm for Altec® trucks with 3"-diameter mast and Gray Epoxirod® Crossarm



Mechanical Ratings:

Max. Total Load:

- Balanced Vertical Load: 450 lb.

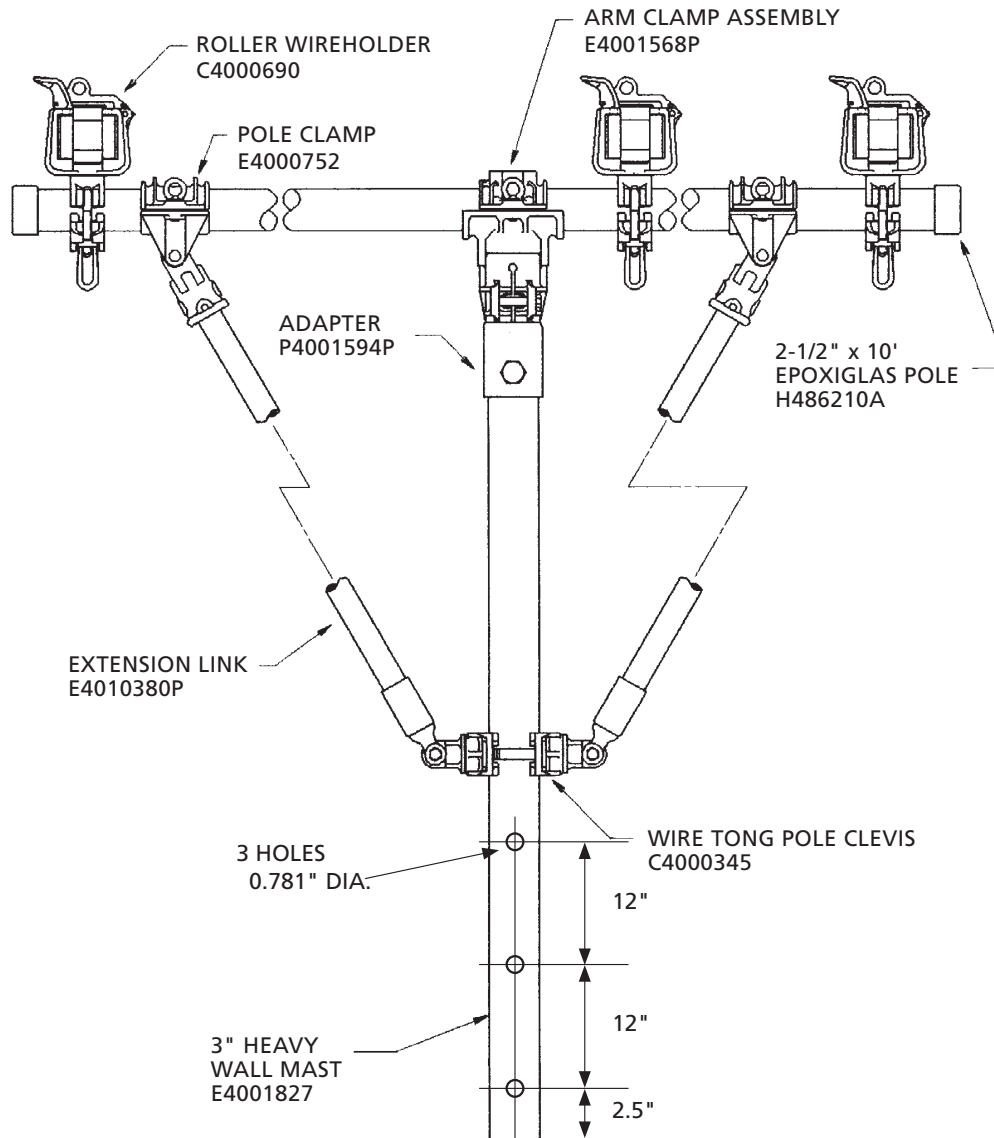
Rated working load (per wire holder):

- Vertical: 150 lb.
- Side Load: 100 lb.

Electrical Ratings:

- GLOSSY, CLEAN AND DRY Epoxiglas®
- 15kV Phase to Phase (20 Inch Min. Wireholder Spacing)
- 34kV Phase to Phase (20 Inch Min. Wireholder Spacing and M4805-7 Insulators are used on each wireholder)

T4001854: Auxiliary Arm for Altec® trucks with 3"-diameter mast & braces and Orange Epoxiglas® Crossarm



Mechanical Ratings:

Max. Total Load:

- Balanced Vertical Load: 1000 lb.
- Unbalanced Vertical Load: 800 lb.

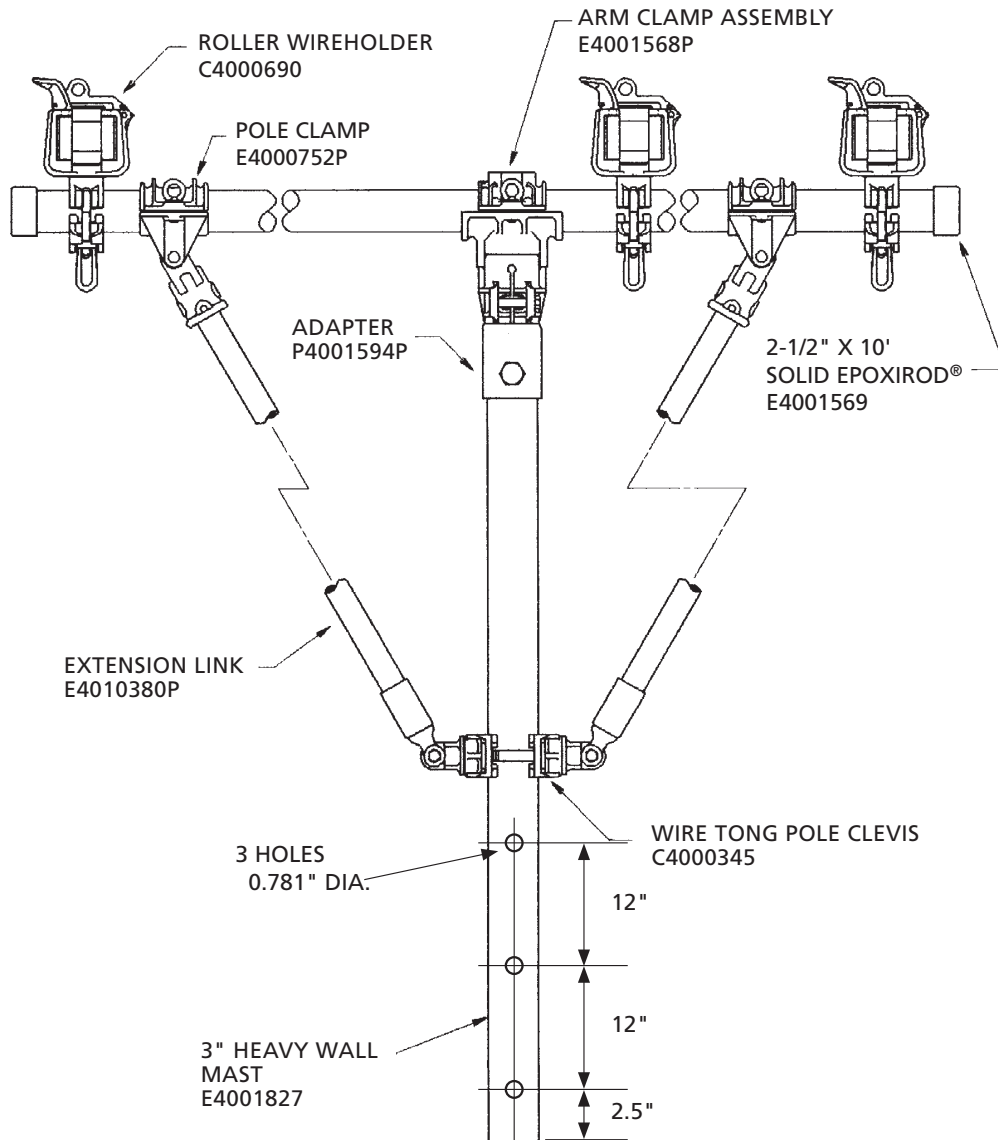
Rated working load (per wire holder):

- Vertical with braces: 200 lb.
- Vertical without braces: 150 lb.
- Side Load: 100 lb.

Electrical Ratings:

- GLOSSY, CLEAN AND DRY Epoxiglas®
- 15kV Phase to Phase (20 Inch Min. Wireholder Spacing)
- 34kV Phase to Phase (20 Inch Min. Wireholder Spacing and M4805-7 Insulators are used on each wireholder)

T4001855: Auxiliary Arm for Altec® trucks with 3"-diameter mast & braces and Gray Epoxirod® Crossarm



Mechanical Ratings:

Max. Total Load:

- Balanced Vertical Load: 1000 lb.
- Unbalanced Vertical Load: 800 lb.

Rated working load (per wire holder):

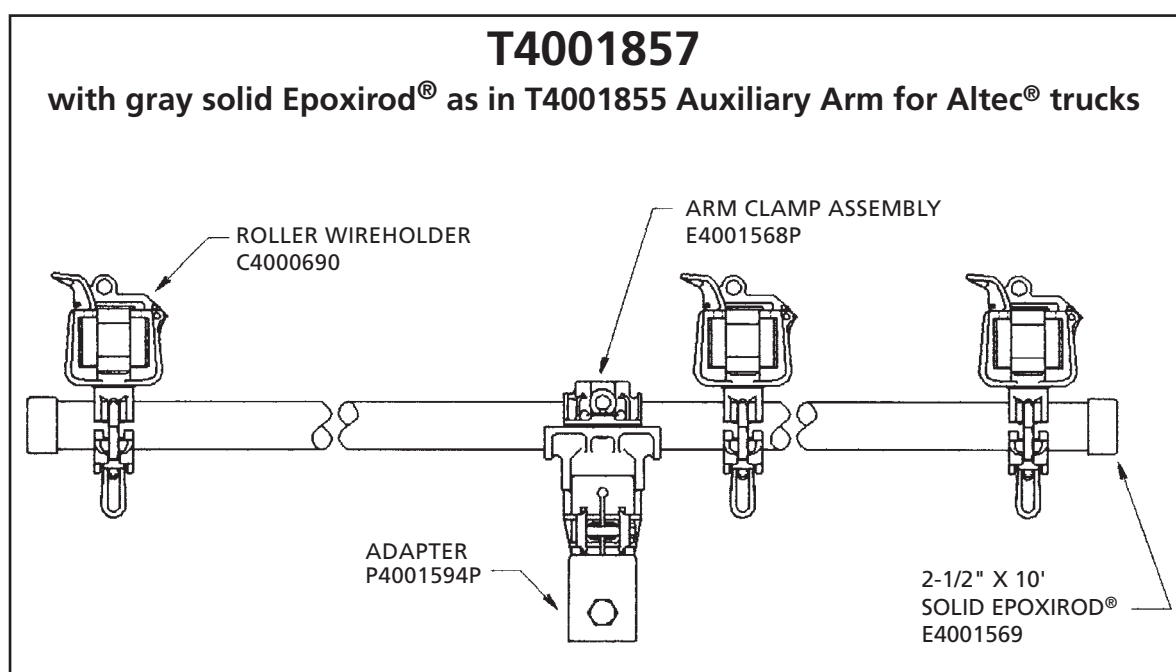
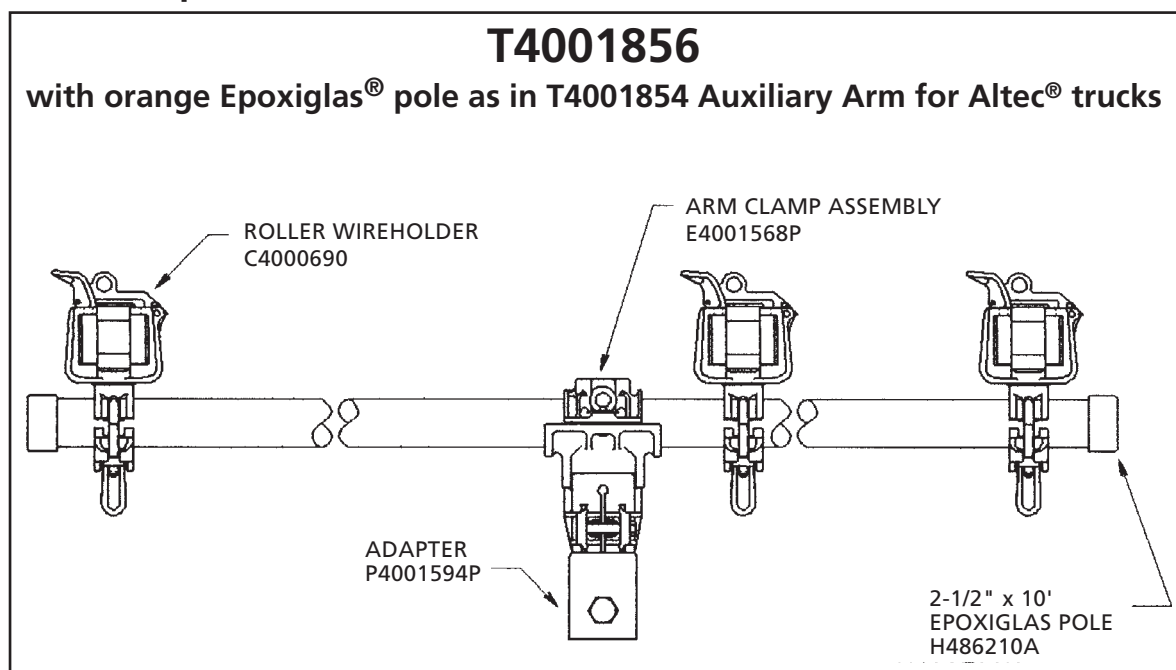
- Vertical with braces: 200 lb.
- Vertical without braces: 150 lb.
- Side Load: 100 lb.

Electrical Ratings:

- GLOSSY, CLEAN AND DRY Epoxiglas®
- 15kV Phase to Phase (20 Inch Min. Wireholder Spacing)
- 34kV Phase to Phase (20 Inch Min. Wireholder Spacing and M4805-7 Insulators are used on each wireholder)



Auxiliary Arm with Jib Adapter for 3"-diameter mast No Braces Required



Mechanical Ratings:

Max. Total Load:

- Balanced Vertical Load: 450 lb.

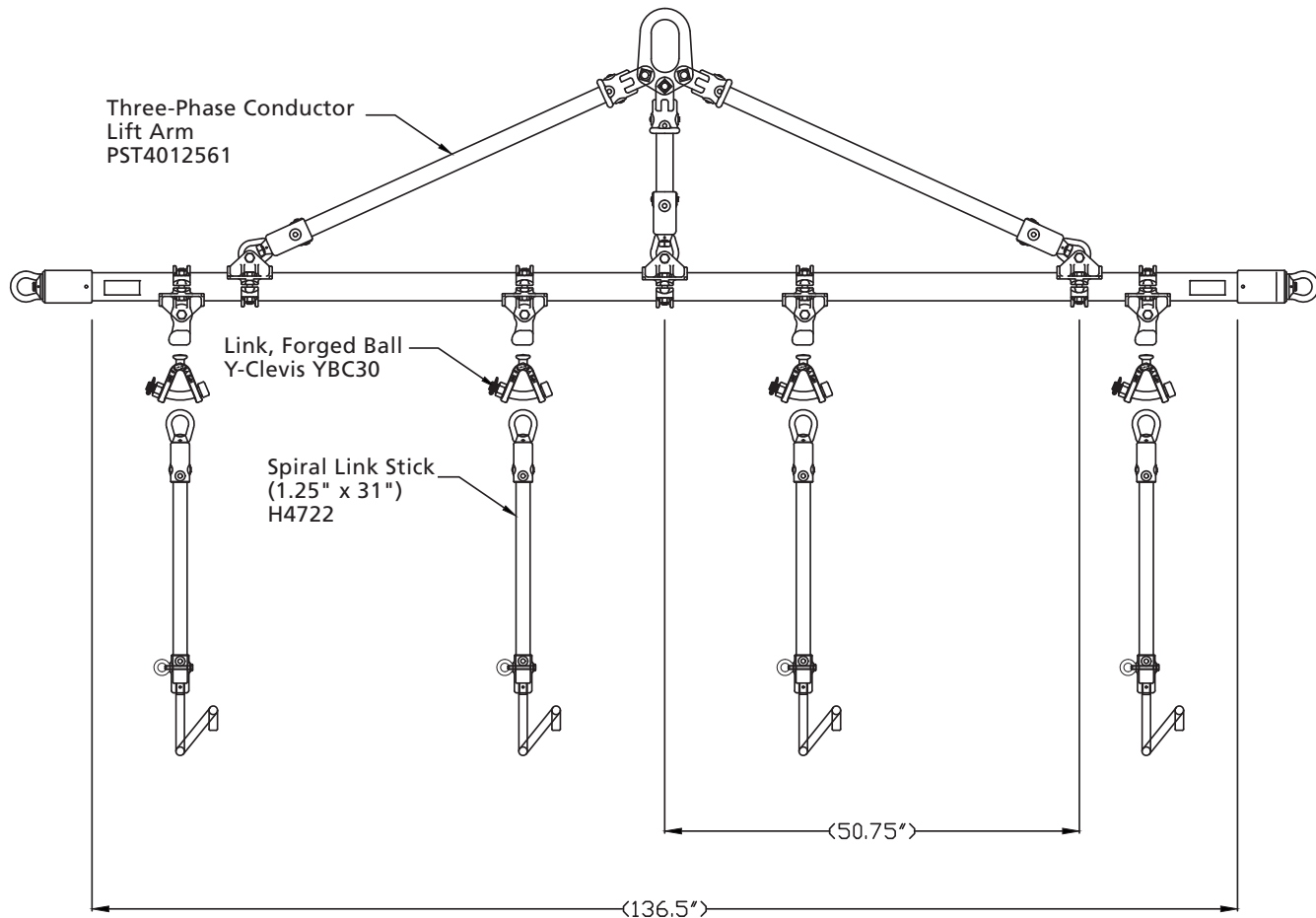
Rated working load (per wire holder):

- Vertical: 150 lb.
- Side Load: 100 lb.

Electrical Ratings:

- GLOSSY, CLEAN AND DRY Epoxiglas®
- 15kV Phase to Phase (20 Inch Min. Wireholder Spacing)
- 34kV Phase to Phase (20 Inch Min. Wireholder Spacing and M4805-7 Insulators are used on each wireholder)

PST4012561: Three-Phase Conductor Lift Arm



Typical complete set up shown above:
PST4012561 - Three-Phase Conductor Lift Arm
YBC30 - Link, Forged Ball Y-Clevis
H4722 - Spiral Link Stick (1.25" x 31")

Features & Applications:

- Used to lift aerial lines
- Up to 4 lifting positions to accommodate various line configurations
- Cross arm is 2.5" diameter and 12.5' long
- Can be used with various styles and lengths of link sticks
- See Page 1108 and 2252

Mechanical Ratings:

Max. Total Load:

- Balanced Vertical Load: 3600 lb.

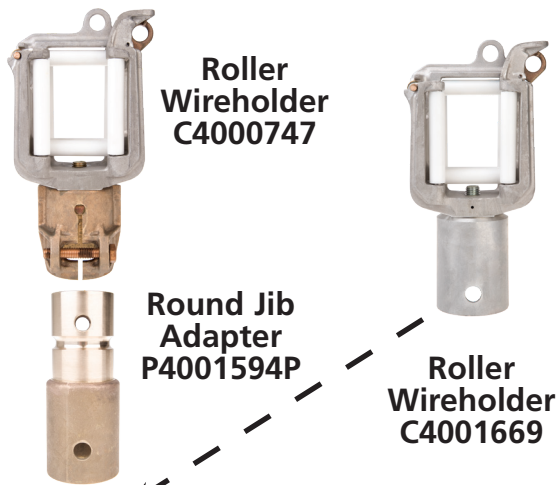
Rated working load:

- Rated working load per position with 3 supports 1,200 lb.
- Rated working load per position with 4 supports 900 lb.



Phone: 573-682-5521 Email: hpsliterature@hubbell.com Web: hubbellpowersystems.com

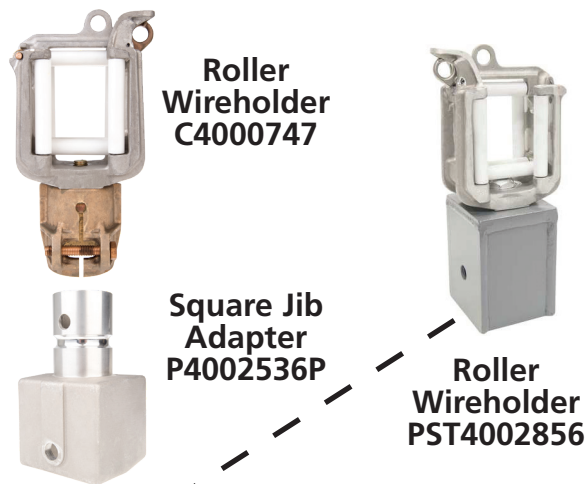
Jib Extension with Wireholder 3"-diameter round Epoxiglas® Insulation



3"-diameter
Epoxiglas®
Jib Extension
T4001525



Jib Extension with Wireholder 4" x 4" square Epoxiglas® Insulation

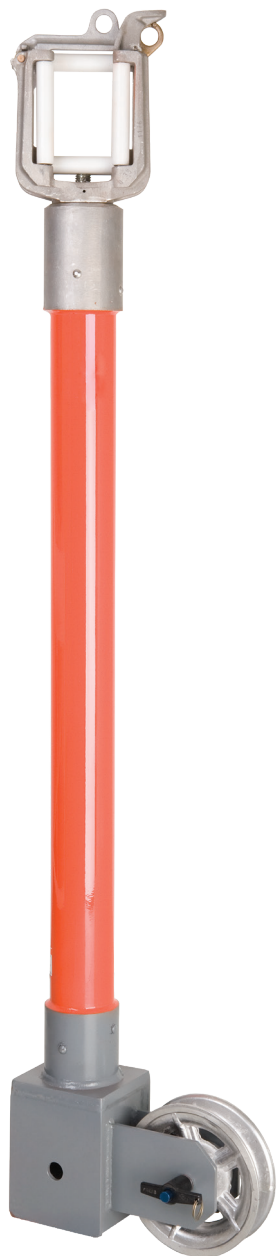


PST4002818: Jib Extension with Wireholder 3"-diameter round Epoxiglas® Insulation



**3"-diameter
Epoxiglas®
Jib Extension
with
Wireholder
PST4002818**

PST4003059: Jib Extension with Sheave and Wireholder 3"-diameter round Epoxiglas[®] Insulation



3"-diameter
Epoxiglas[®]
Jib Extension
with

Wireholder & Sheave
PST4003059



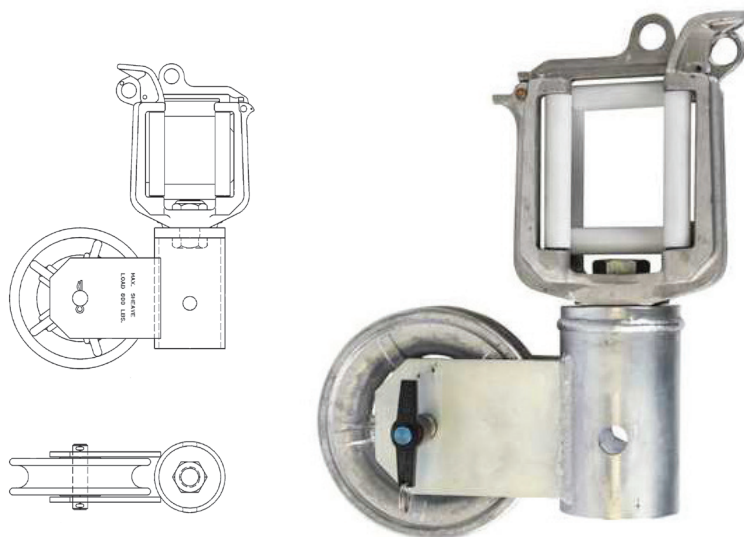
Phone: 573-682-5521 Email: hpsliterature@hubbell.com Web: hubbellpowersystems.com

Combination Swivel Wireholder/Sheave for Altec® trucks*

WARNING: ELECTRIC SHOCK HAZARD. Winch rope can conduct electricity from this device to metal parts on the bucket support. Can cause electrocution death or severe injury. Always remove winch rope from this device when the wireholder is used to support an energized conductor.

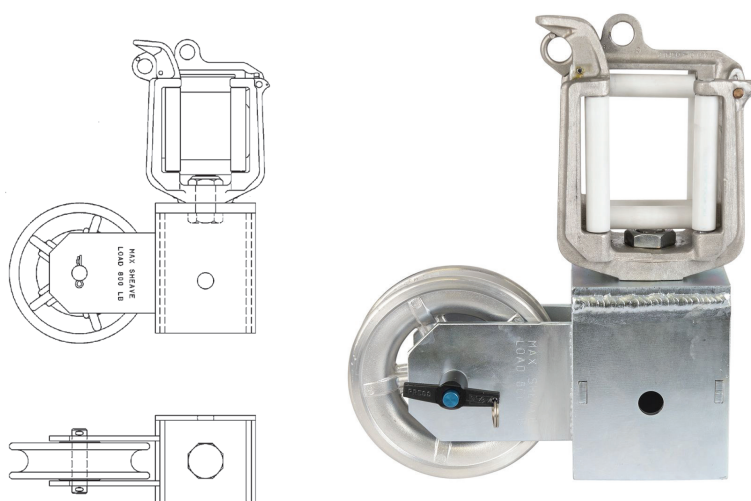
Features & Applications

- Eliminates changeovers from Wireholder (for picking up a phase conductor) to Rope Sheave (for lifting items)
- Each combination unit attaches directly to jib
- Rated Working Load:
Wireholder - 300 lbs.
Sheave - 800 lbs.
- Both units feature a Large Swivel-Type Roller Wireholder with 2-½" x 3-⅜" opening and a 7"-dia. Sheave to accept up to ¾"-dia. rope



for Altec® trucks* with 3" diameter jib
Cat. No. T4002529 (23 lb. / 10.43 kg.)

T-handle ball lock pin sold separately - PSP4004319P



for Altec® trucks* with 4" x 4" square jib
Cat. No. T4002530 (23 lb. / 10.43 kg.)

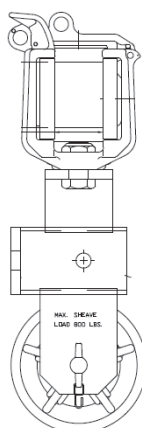
T-handle ball lock pin sold separately - P4002450P

*To fit other brands of trucks, contact Hubbell Power Systems with detailed specifications.

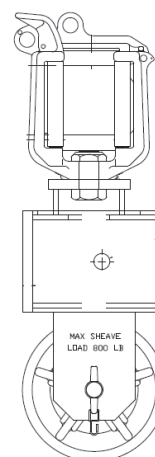
Combination Swivel Wireholder/Sheave for horizontal applications

Features & Applications

- For use with jib or material handler in a horizontal position.
- Eliminates changeovers from
- Wireholder (for picking up a phase conductor) to Rope Sheave (for lifting items)
- Each combination unit attaches directly to jib
- Rated Working Load:
Wireholder - 300 lbs.
Sheave - 800 lbs.
- Both units feature a Large Swivel-Type Roller Wireholder with 2-½" x 3-3/8" opening and a 7"-dia. Sheave to accept up to ¾"-dia. rope



for Altec® trucks*
with 3" diameter jib
Cat. No. PST4004386
(23 lb. / 10.43 kg.)
T-handle ball lock pin sold
separately - PSP4004319P

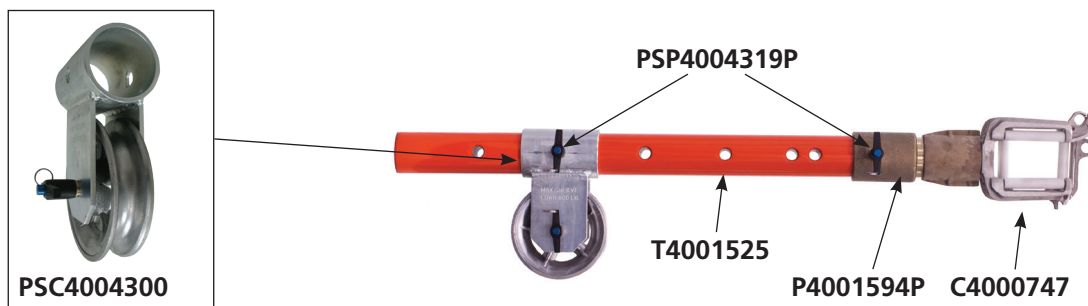


for Altec® trucks*
with 4" x 4" square jib
Cat. No. PST4004383
(23 lb. / 10.43 kg.)
T-handle ball lock pin sold
separately - P4002450P

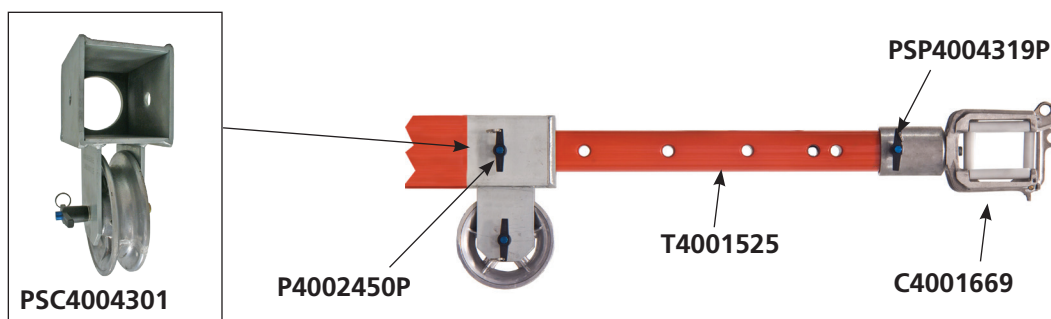
Sheave Adapters

Provides insulation between the sheave roller adapter and the single phase wire holder (with proper accessories shown).

Catalog No.	Description	Weight lbs / kg
PSC4004300	Sheave Adapter for 3" round jib	16 lb. / 7.3 kg



Catalog No.	Description	Weight lbs / kg
PSC4004301	Sheave Adapter for 4" x 4" jib	16 lb. / 7.3 kg



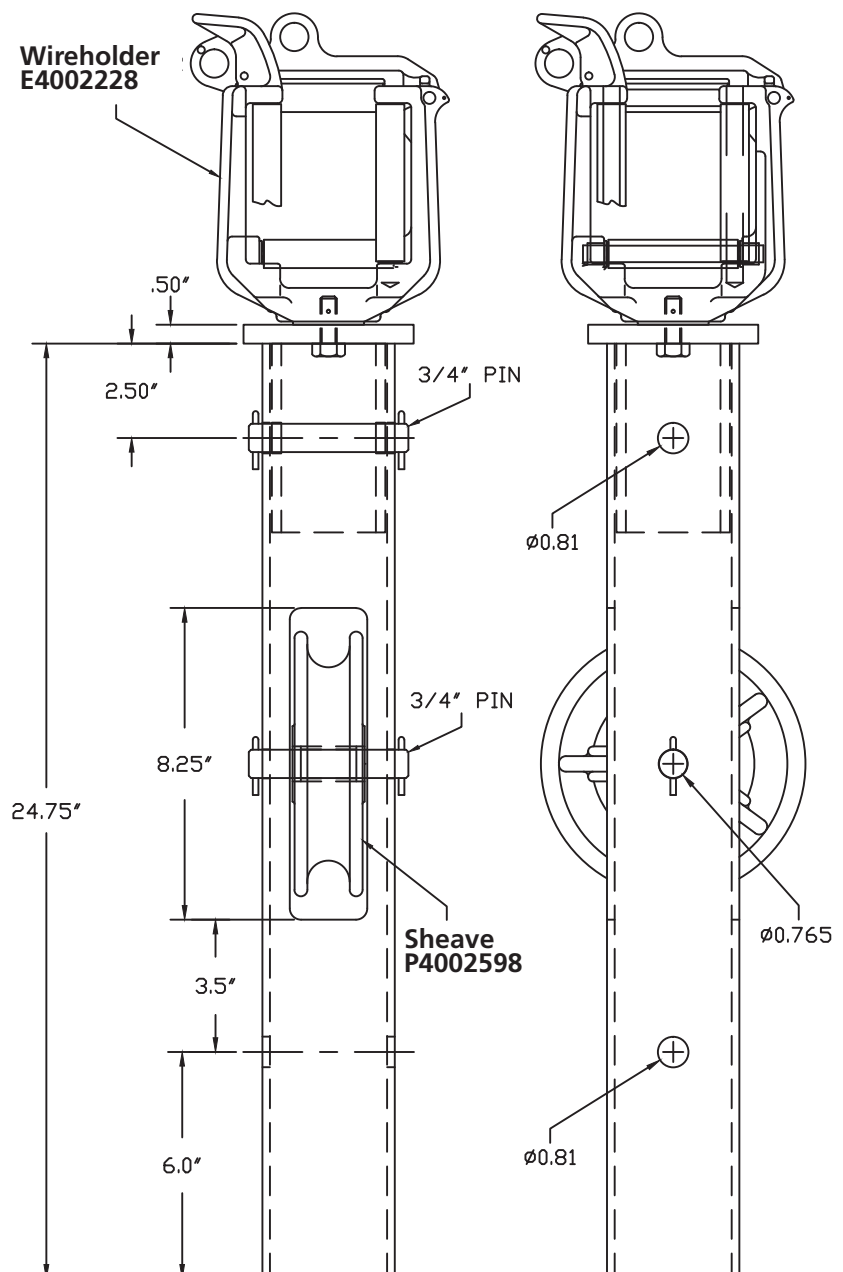
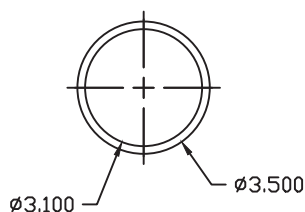
PSC4004373: Combination Swivel Wireholder/Sheave for upper mounted winch line

Features & Applications

- For use with jib or material handler in a horizontal position.
- Eliminates changeovers from Wireholder (for picking up a phase conductor) to Rope Sheave (for lifting items)
- Each combination unit attaches directly to jib
- Rated Working Load:
Wireholder - 300 lbs.
Sheave - 800 lbs.
- Both units feature a Large Swivel-Type Roller Wireholder with 2-1/2" x 3-3/8" opening and a 7"-dia. Sheave to accept up to 3/4"-dia. rope



T-handle ball lock pin sold separately - PSP4004319P



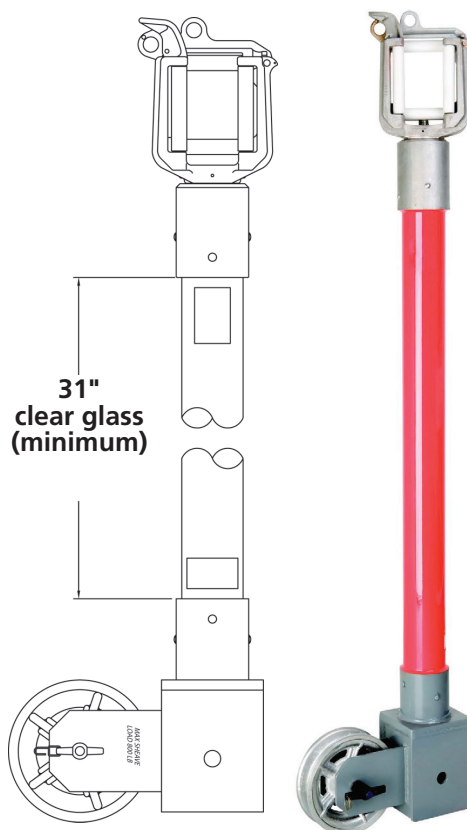
Combination Swivel Wireholder/Sheave Jib Extension for Altec® trucks*

Features & Applications

- Eliminates changeovers from Wireholder (for picking up a phase conductor) to Rope Sheave (for lifting items)
- Includes 3"-dia. heavy-wall jib
- Rated Working Load:
Wireholder - 300 lbs.
Sheave - 800 lbs.
- Features a Large Swivel-Type Roller Wireholder with 2-½" x 3-⅜" opening and a 7"-dia. Sheave to accept up to ¾"-dia. rope

for Altec® trucks* with 4" x 4" square jib
Cat. No. PST4003059
39 lb. / 17.7 kg.)

*To fit other brands of trucks, contact Hubbell Power Systems with detailed specifications. For custom lengths, consult factory.



Swivel Wireholder Jib Extensions for Telelect trucks*

Features & Applications

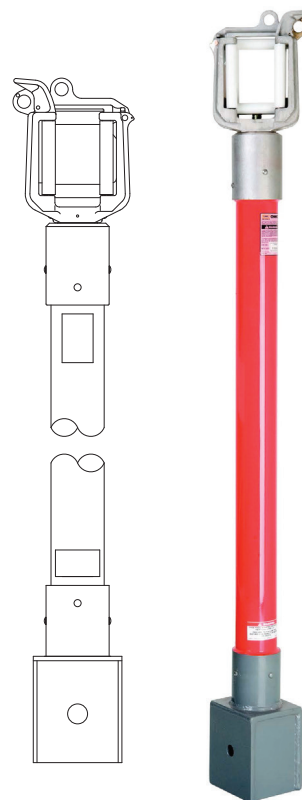
- Feature a Large Swivel-Type Roller Wireholder with 2-½" x 3-⅜" opening mounted on 3" dia. orange Epoxiglas® jib extension
- Tested per ASTM F711 and OSHA

ORDERING INFORMATION

Catalog No.	Fits Jib Size	Weight
PST4002818	4" x 4"	28 lb. / 12.72 kg.
PST4002819	3⅜" x 5"	29 lb. / 13.2 kg.
PST4002820	3" Round	27 lb. / 12.3 kg.
PST4002821	4½" Round	28 lb. / 12.72 kg.

3" Heavy Wall Epoxiglas® Pole with 31" of clear glass (minimum).

Jib Extension Rated Working Load: 300 lb.



*To fit other brands of trucks, contact Hubbell Power Systems with detailed specifications. For custom lengths, consult factory.



Auxiliary Arm Attachments

- Roller Wireholder — Seven Delrin plastic rollers offer protection to conductors while raising the conductor above the work area. Accommodates conductors up to and including 1-1/2 inches in dia. The gate is held closed by a spring-loaded latch which must be manually opened
- Insulators— Epoxy based, available as separate items or can be added to existing auxiliary arm wireholders to upgrade for 34.5 kV use



M48057



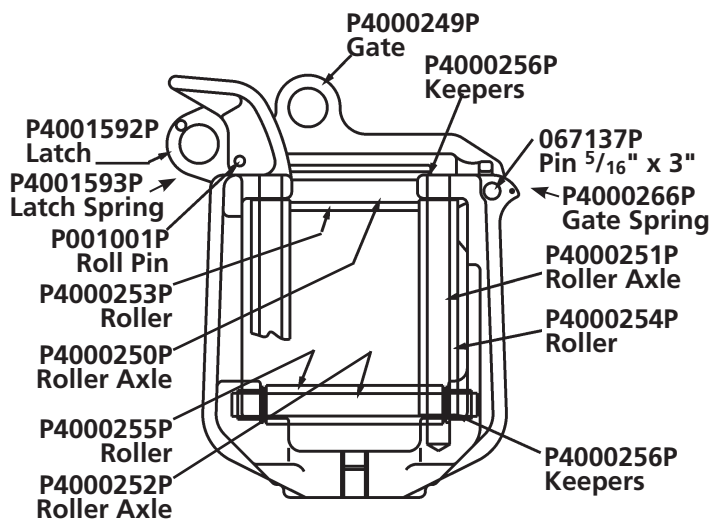
C4001669
for 3" dia. Jib



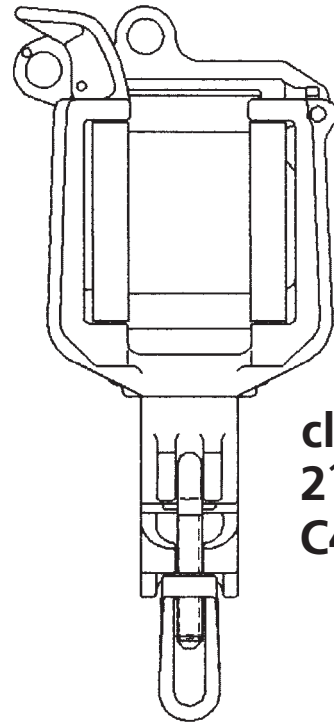
For 2 1/2" Arm
C4000690
with 2 1/2" opening
C4000268
with 2" opening

Catalog No.	Description	Wireholder Type	Adapter	Weight
C4000270	Small Wireholder Only	Small Roller 2" Opening	None	3 lb. / 1.4 kg.
C4000268	Small wireholder with Clamp for 2.5" Arm	Small Roller 2" Opening	Clamp for 2.5" Arm	4.4 lb. / 2 kg.
C4000269	Small Wireholder with Clamp and Insulator	Small Roller 2" Opening	Clamp for 2.5" Arm and M48057 Insulator	6 lb. / 2.7 kg.
C4000691	Large Wireholder Only	Large Roller 2.5" Opening	None	4.5 lb. / 2 kg.
C4000690	Large wireholder with Clamp for 2.5" Arm	Large Roller 2.5" Opening	Clamp for 2.5" Arm	4.5 lb. / 2 kg.
PSC4002937	Large wireholder with Clamp for 3" Arm	Large Roller 2.5" Opening	Clamp for 3" Arm	1 lb. / 0.5 kg.
C4000747	Large wireholder with Swivel Ferrule	Large Roller 2.5" Opening	Swivel Ferrule	8 lb. / 3.6 kg.
C4001669	Large Wireholder for 3" Diameter Jib	Large Roller 2.5" Opening	Ferrule for 3" Diameter Jib	6 lb. / 2.7 kg.
M48061	Heavy Duty Wireholder Only	Heavy Duty Roller Wireholder 2.43" Opening	None	24 lb. / 10.9 kg.
T4001931	Small Roller Wireholder with Hi-Ranger Adapter	Small Roller 2" Opening	Hi-Ranger 4 1/8" x 4 1/8"	14 lb. / 6.4 kg.
PST4001945	Small Roller Wireholder with Holan Adapter	Small Roller 2" Opening	Holan 3 1/8" x 3 1/8"	10.5 lb. / 4.8 kg.
T4001941	Small Roller Wireholder for Telelect Jib	Small Roller 2" Opening	Telelec Jib 3.19" Dia.	9.1 lb. / 4.1 kg.
PST4002856	Large wireholder with Ferrule for 4" x4"	Large Roller 2.5" Opening	4.06" x 4.06"	18 lb. / 8.2 kg.
T4001929	Large Roller Wireholder with Hi-Ranger Adapter	Large Roller 2.5" Opening	Hi-Ranger 4 1/8" x 4 1/8"	24 lb. / 10.9 kg.
PST4001926	Large Roller Wireholder with Holan Adapter	Large Roller 2.5" Opening	Holan 3 1/8" x 3 1/8"	12 lb. / 5.4 kg.
T4001942	Large Roller Wireholder for Telelect Jib	Large Roller 2.5" Opening	Telelec Jib 3.19" Dia.	9 lb. / 4.1 kg.
T4001930	Heavy-Duty Roller Wireholder with Hi-Ranger Adapter	Heavy Duty Roller Wireholder 2.43" Opening	Hi-Ranger 4 1/8" x 4 1/8"	41 lb. / 18.6 kg.
T4001912	Heavy-Duty Wireholder with Holan Adapter	Heavy Duty Roller Wireholder 2.43" Opening	Holan 3 1/8" x 3 1/8"	31.5 lb. / 14.3 kg.
T4001943	Heavy-Duty Wireholder for Telelect Jib	Heavy Duty Roller Wireholder 2.43" Opening	Telelec Jib 3.19" Dia.	25 lb. / 11.3 kg.

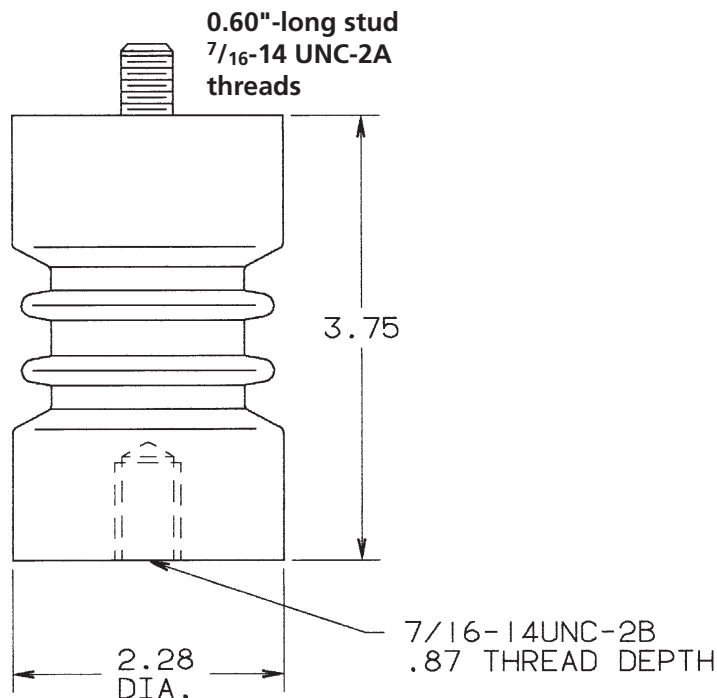
Small Roller Wireholder 2" opening



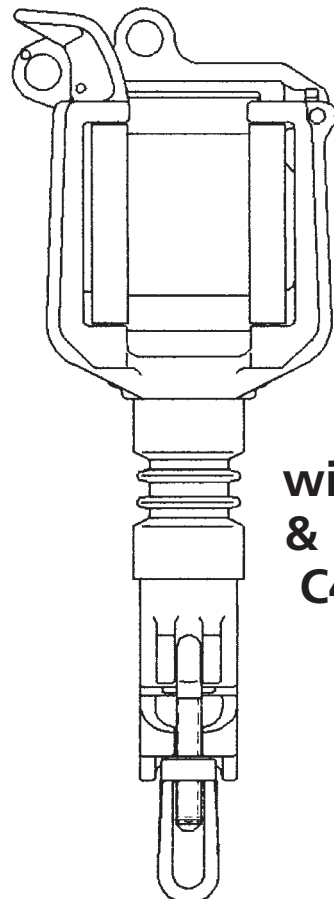
**Wireholder only
C4000270**



**with
clamp for
2 1/2" arm
C4000268**

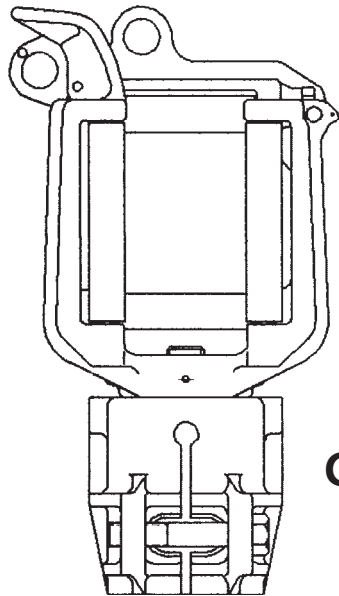


**Epoxy insulator
M48057**

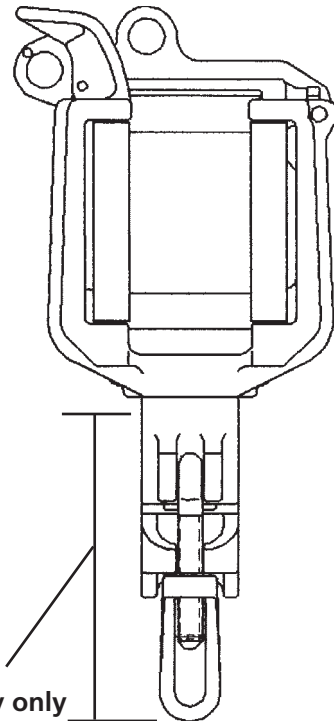


**with clamp
& insulator
C4000269**

Large Roller Wireholder 2 1/2" opening



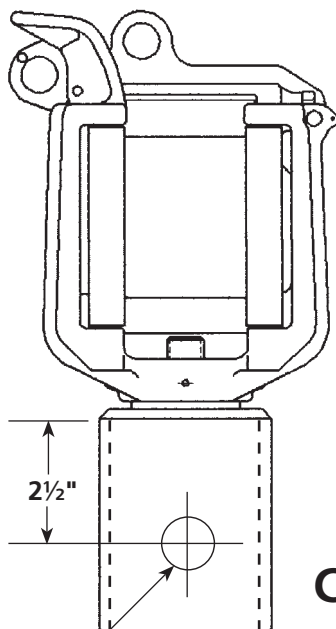
with
Swivel
Ferrule
C4000747



with
clamp for
2 1/2" arm
C4000690

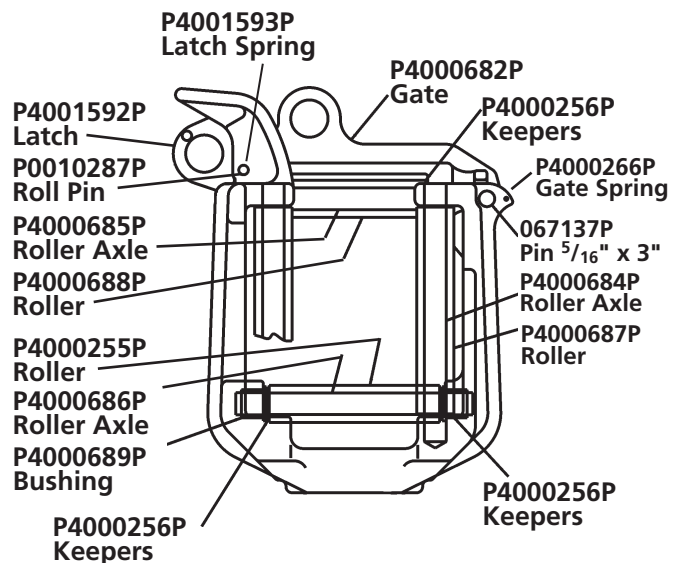
with
clamp for
3" arm
PSC4002937

PSC4000690002
Clamp Assembly only



for
3"-dia.
Jib
C4001669

0.781" dia.

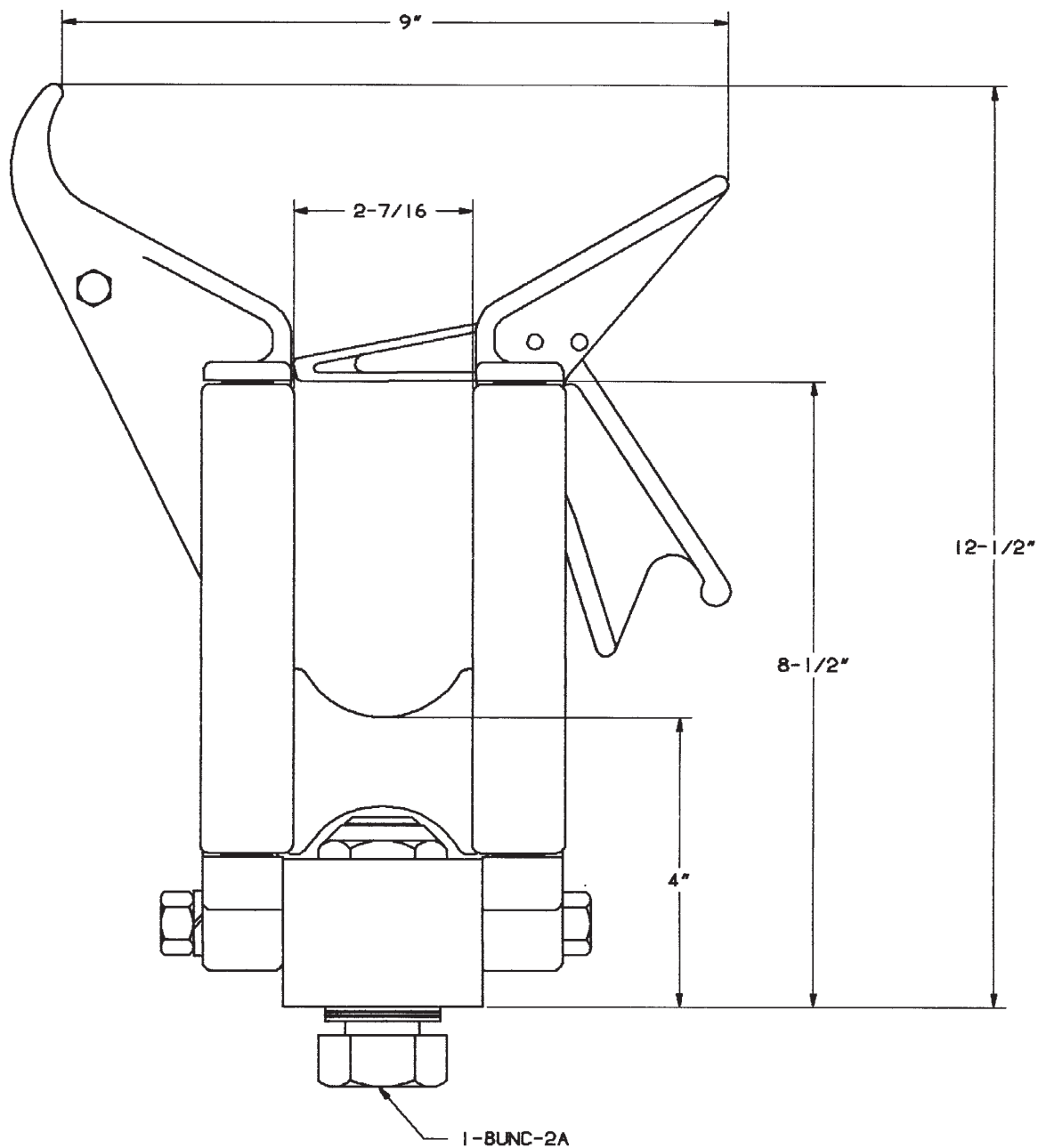


Wireholder only
C4000691

M48061: Heavy-Duty Roller Wireholder

Mechanical Ratings:

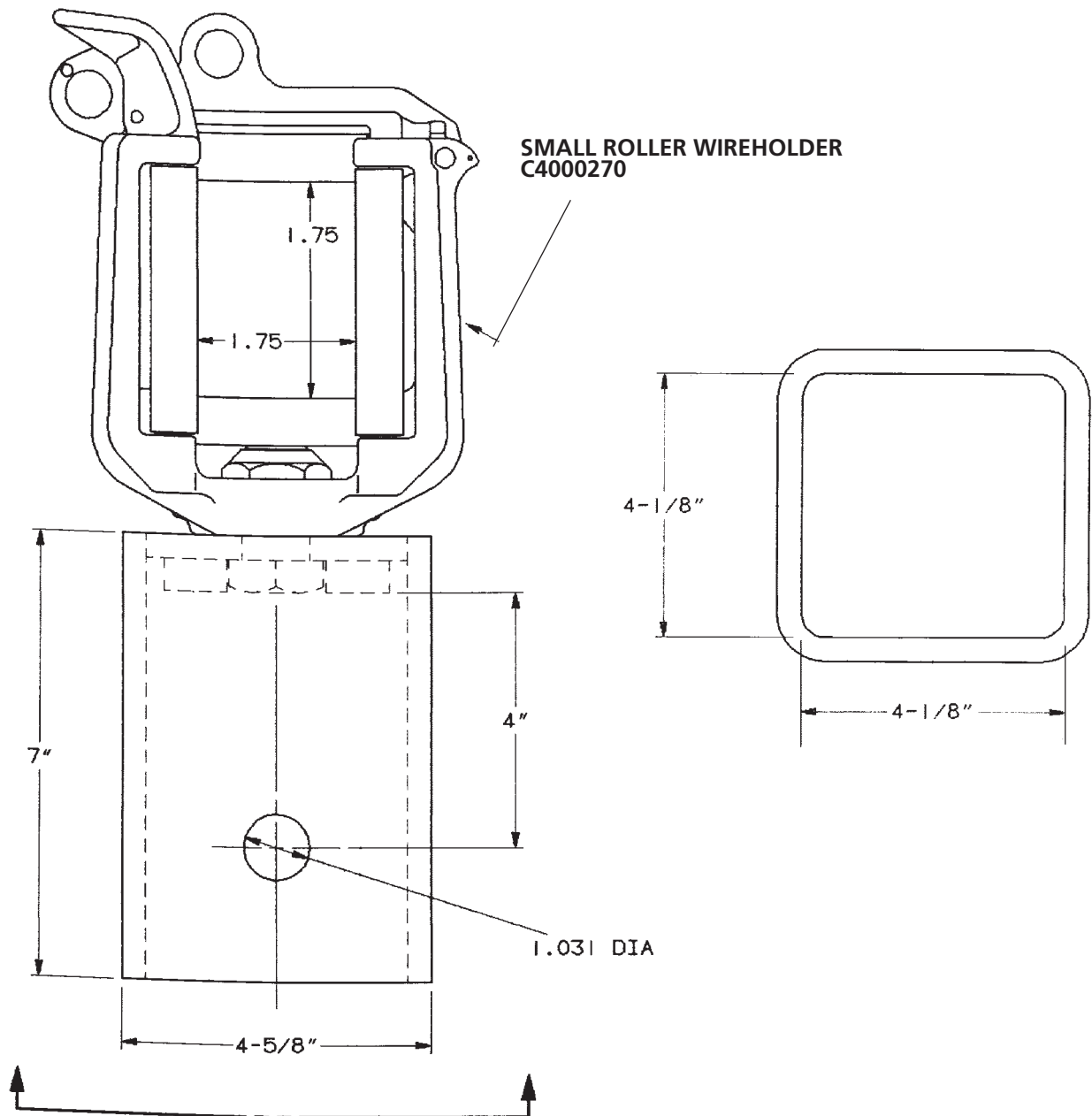
- Vertical Load: 2000 lb.
- Side Load: 500 lb.



T4001931: Small Roller Wireholder with Hi-Ranger Adapter

Mechanical Ratings:

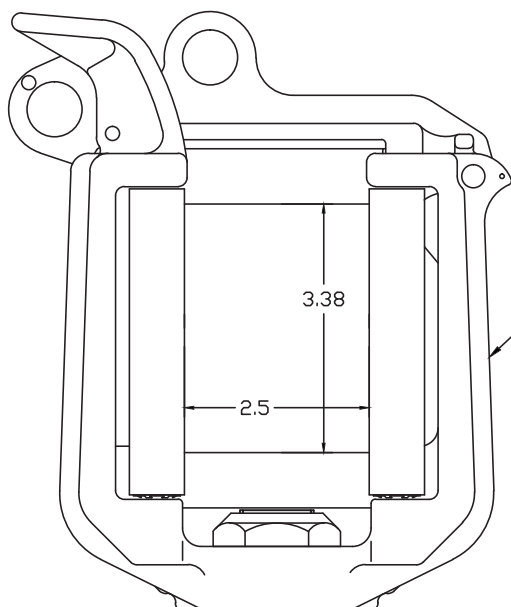
- Vertical Load: 300 lb.
- Side Load: 100 lb.



PST4002856: Large Roller Wireholder with Altec® Adapter

Mechanical Ratings:

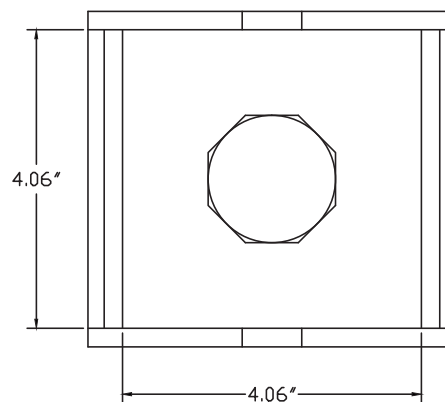
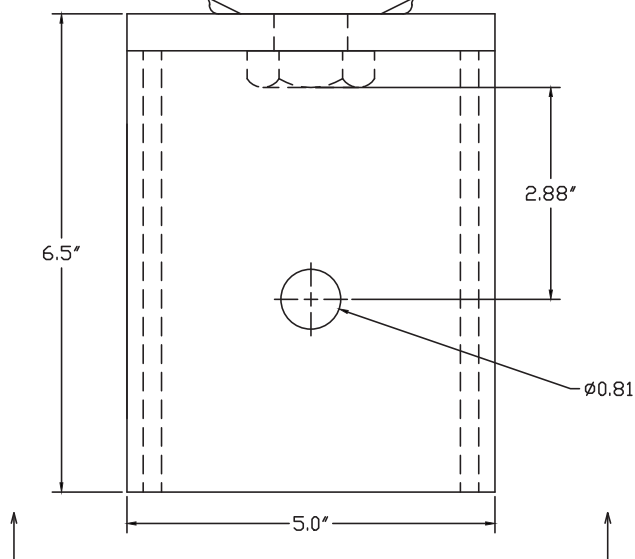
- Vertical Load: 500 lb.
- Side Load: 100 lb.



LARGE ROLLER
WIREHOLDER
E4002228P



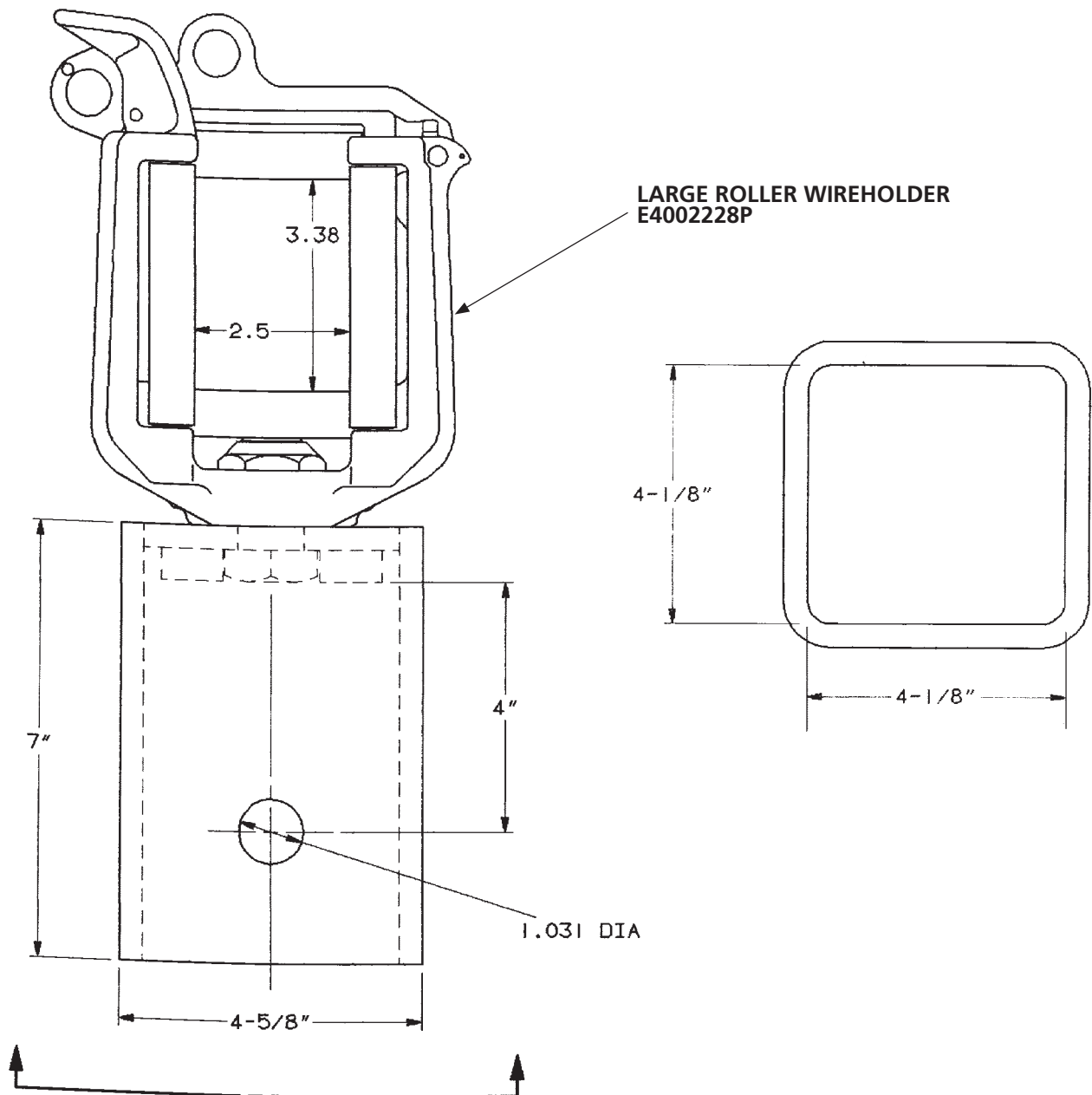
PST4002856



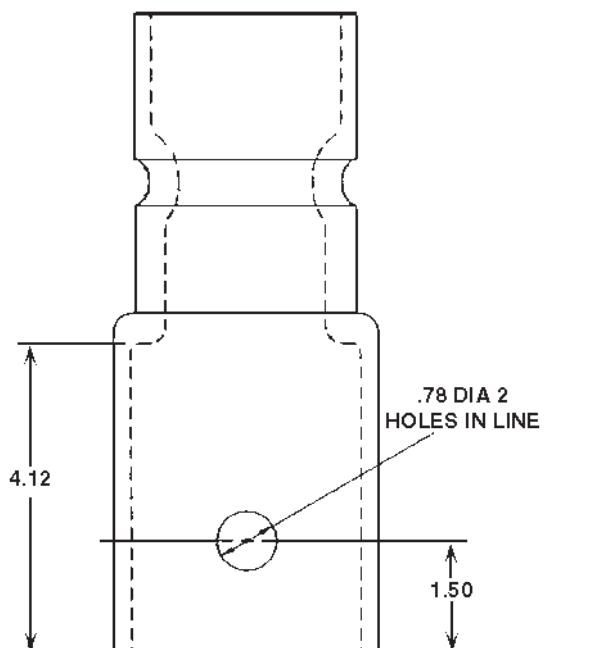
T4001929: Large Roller Wireholder with Hi-Ranger Adapter

Mechanical Ratings:

- Vertical Load: 500 lb.
- Side Load: 100 lb.

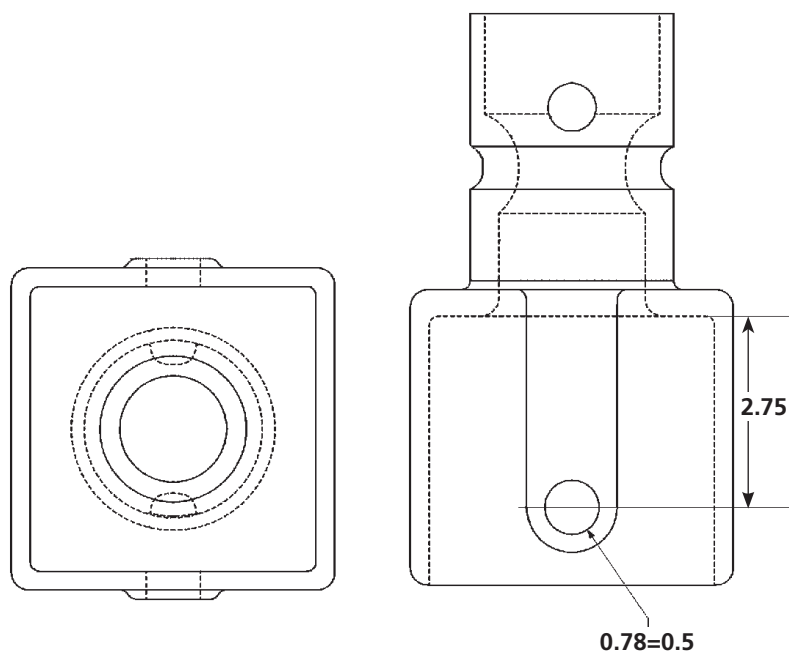


P4001594P: Altec® Jib Adapter: 3" Round



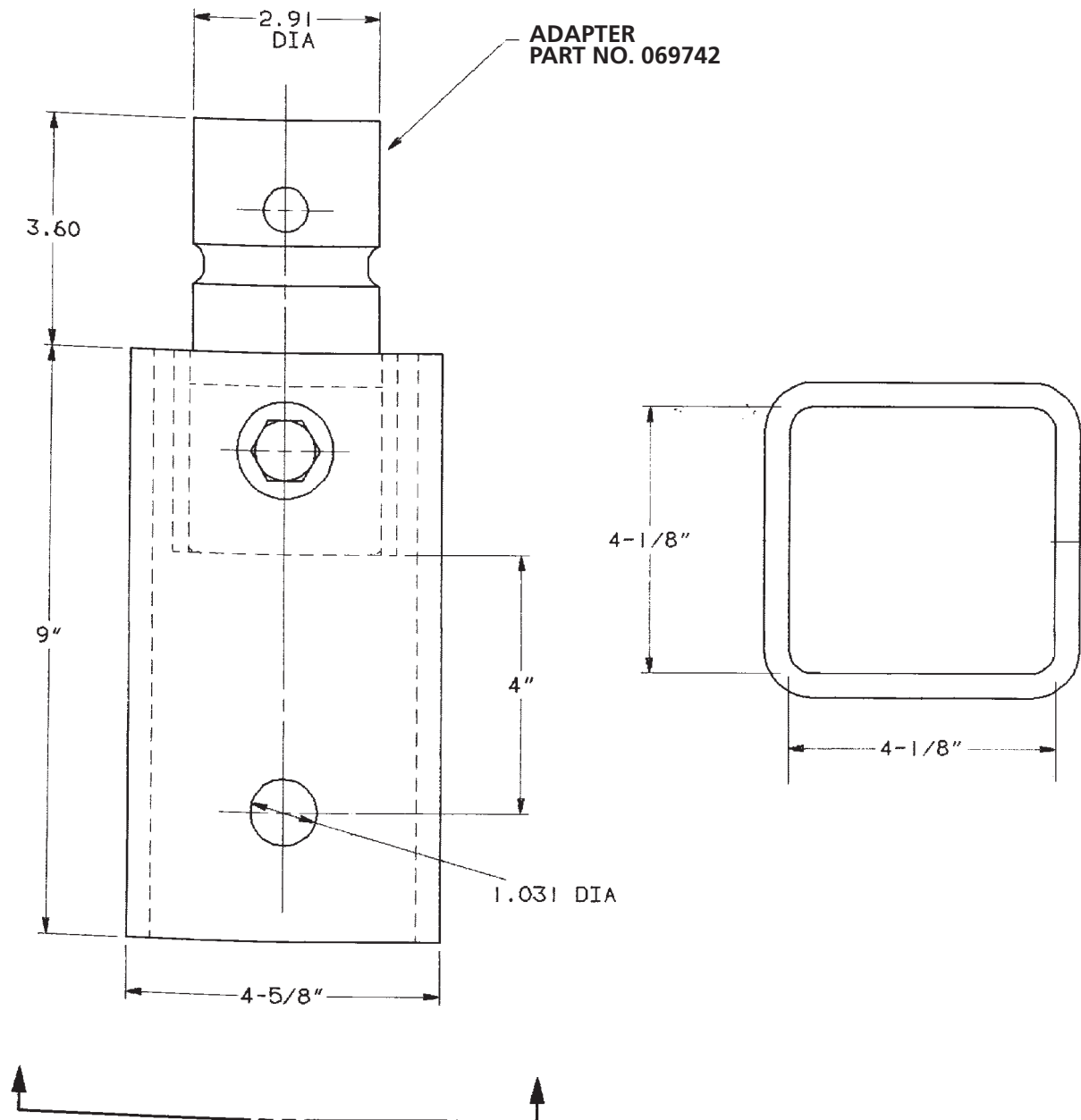
P4001594P

P4002536P: Altec® Jib Adapter: 4" x 4" Square



P4002536P

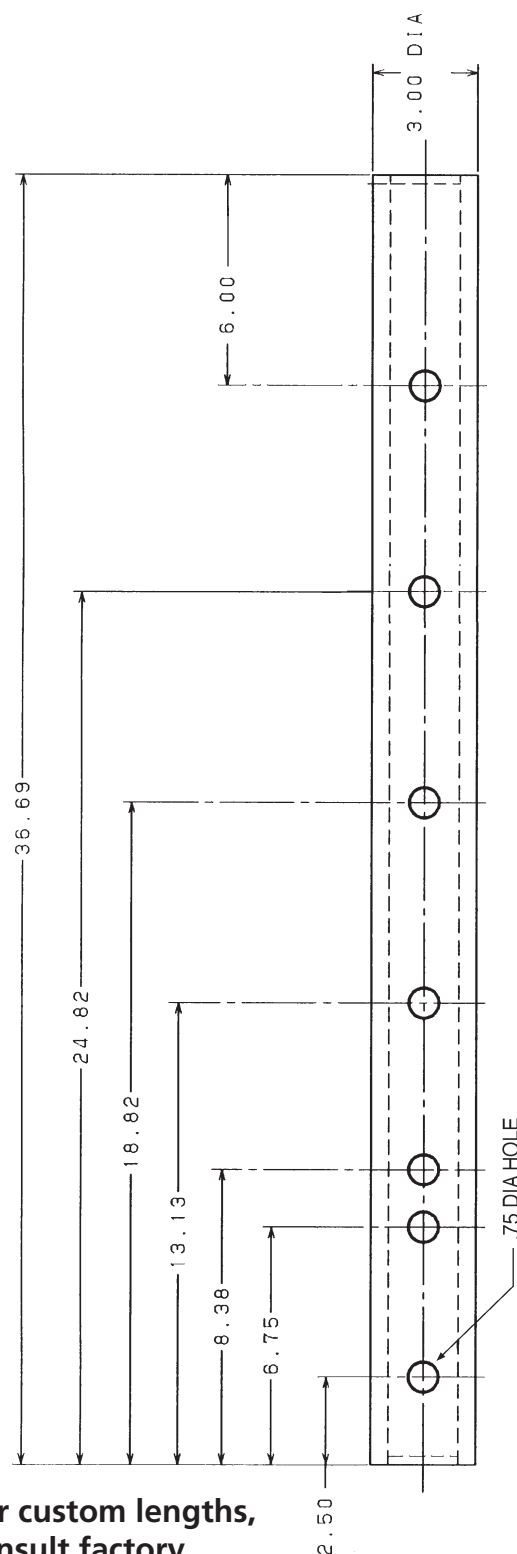
T4001932: Hi-Ranger Jib Adapter



FOR USE WITH CHANCE

T4001856	Support Arm
T4001857	Support Arm
C4000746	Rope Sheave Assembly
C4000747	Large Roller Wireholder

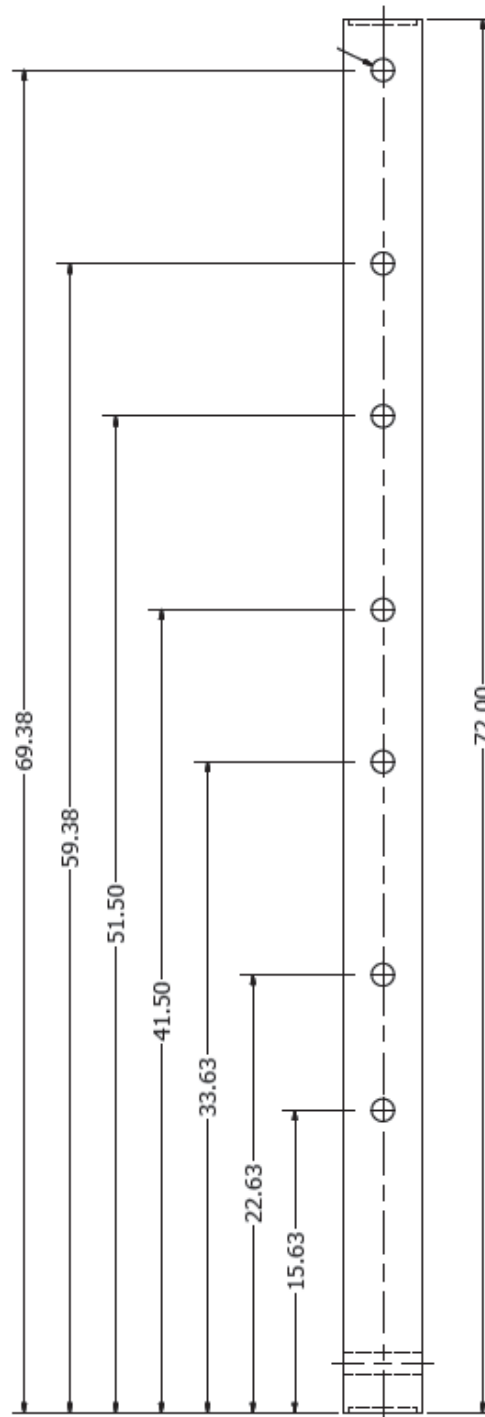
**Tool Bag PSC4032902
sold separately.
(7-1/2" x 42")**



**For custom lengths,
consult factory.**



PST4002748: 4" x 4" x 6' Insulated Jib for Altec[®] trucks Rated Working Load: 800 lb.



For custom lengths,
consult factory.

T6001971: Truck Grounding Set

Features & Applications

- Drains off capacitance or static charges from winch trucks and aerial devices
- This grounding method should not be considered adequate protection for personnel against conductor contact

Screw Ground Rod

(Catalog No. G3370)

When installed, 6' copper-clad rod develops less resistance than straight ground rods. Helix (spiral section), T-handle and wingnut are bronze for high conductivity

Flat Face Ground Clamp

(Catalog No. T6001798)

For secure attachment to the truck bed at an area cleaned for electrical contact, clamp features bronze T-handle, aluminum body and serrated jaws with range for 1/8" to 1-1/2" angles or flats. Ratings: 400 amps continuous current; 25,000 amps fault current for 15 cycles and 30 cycles

C-Type Ground Clamp

(Catalog No. C6001754)

For connection to vertical shaft of ground rod, clamp features smooth jaws and bronze eyescrew. Ratings: 350 amps continuous current; 28,000 amps fault current for 15 cycles and 20,000 amps fault current for 30 cycles

Grounding Cable and Ferrules

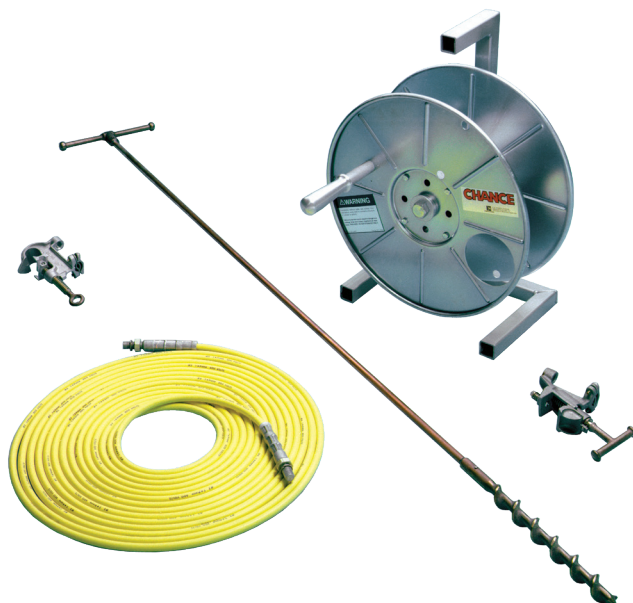
(Catalog No. S6116 & C6002618)

For easy handling, extra-flexible #2 copper cable features fine stranding and tough yellow T-prene rubber compound jacket for all-temperature uses down to -20°F. Cable length is 50 feet. Two shrouded aluminum ferrules come factory-installed on the cable to secure the threaded studs in the clamp terminals

Storage Reel

(Catalog No. C4176086)

To help keep ground set clean and ready for use, reel features tubular-steel frame which can be bolted to deck. Reel is for storage only. Cable and clamps must be removed completely from reel before use. Failure to do so could result in a dangerous voltage drop and violent mechanical reactions. A label on the unit gives this warning.



ORDERING INFORMATION

Catalog No.	Description	Weight
T6001971	Truck Grounding Set	35 lb./15.75 kg.

T3060006: Truck Visual Barrier



T3060006

Features & Applications

- Alerts workers and onlookers to stay away from truck when it is being used in proximity to energized conductors
- Six rods, made of bright-orange Epoxirod®, provide a 6' air space around the entire perimeter of truck
- Kit also includes:
 - o Six pieces of 3" long steel tubing (to be welded to truck by the customer) to hold the barricade rods
 - o 150 feet of yellow rope
 - o Canvas storage bag
- Entire kit requires less storage than traffic cones
- Can be quickly installed and removed at each job site

Catalog No.	Description	Weight
T3060006	Truck Visual Barrier	21 lb./9.5 kg.

Swivel-Base Truck Mount for 12V, 115V, 230V & Hydraulic 1,000-lb. Series 90 Capstan Hoists

NOTE: For Hitch-Receiver Mount, see Catalog Section 1150

Sets At Angles Needed For A Variety Of Jobs

- Turntable design permits proper alignment without repositioning service vehicle
- Heavy-gauge steel base bolts direct to truck body
- Bracket can be pinned at every 15° interval around circular base for:
 - Stringing
 - Tensioning
 - Sagging conductors
 - Pulling in cable
 - Hoisting equipment
 - Setting poles
 - Pulling vehicles
- To remove hoist and bracket from swivel base, simply remove four bolts
- C-bracket also can be bolted down for fixed-angle



WARNING

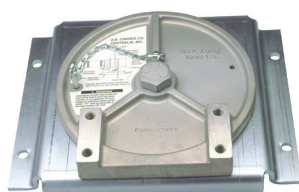
This is not a personnel lifting device. A label on the unit warns against lifting people or loads directly above people.



For transport, hoist can remain mounted.

Utilize truck as portable power source

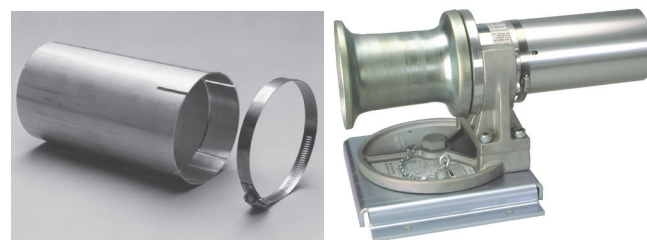
- Only 12V, 115V, 230V and Hydraulic 1,000-lb.-rated hoists are recommended for truck mounting
- See page 1153 to order



Swivel Bracket C3080903



C-Bracket C3080890



Swivel Bracket only

Catalog No.	Weight, each
C3080903	18 lb. (8.1 kg.)

C-Bracket only — complete with mounting bolts

C3080890	5 lb. (2.25 kg.)
----------	------------------

Weather Shield for 12-Volt DC hoist only — complete with band clamp

C3080909	1 lb. (0.45 kg.)
----------	------------------



HUBBELL®

Power Systems, Inc.

• 210 N. Allen St. • Centralia, MO 65240 • (573) 682-5521

NOTICE: For the latest revision of our Catalog and Literature, click here or visit our web site: www.hubbelpowersystems.com

NOTE: Hubbell has a policy of continuous product improvement. Please visit hubbelpowersystems.com to confirm current design specifications. ©Copyright 2020 Hubbell Incorporated

NEVER COMPROMISE™

www.hubbelpowersystems.com

March 2020



Catalog 4150